

# V&V Reference Report

## L2 ASCDS Version : 8.4.4

Observation 9545 - L2 Version 2  
Chandra X-Ray Center

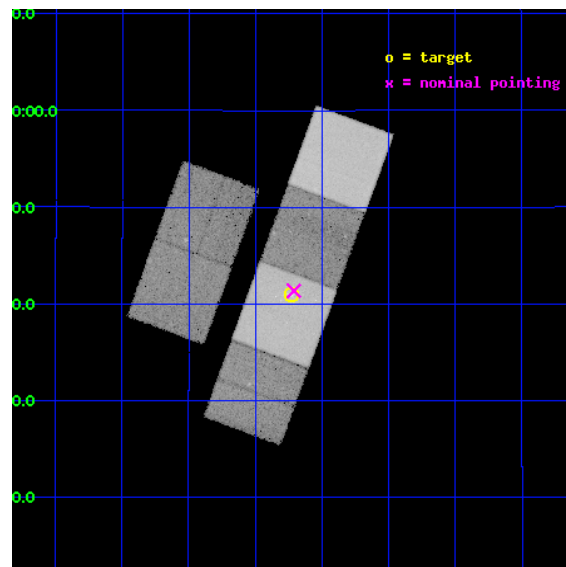
L2 Processing Date : May 31 2012

## Contents

<b>1</b>	<b>Front</b>	<b>2</b>
<b>2</b>	<b>OBI</b>	<b>3</b>
2.1	OBI . . . . .	3
2.1.1	Images . . . . .	3
2.1.2	Bias . . . . .	3
2.1.3	Parameters . . . . .	4
2.1.4	Events . . . . .	4
2.2	Compared Parameters . . . . .	5
2.3	Aspect . . . . .	6
2.4	Star Slots . . . . .	9
2.4.1	Slot 3 . . . . .	9
2.4.2	Slot 4 . . . . .	10
2.4.3	Slot 5 . . . . .	11
2.4.4	Slot 6 . . . . .	12
2.4.5	Slot 7 . . . . .	13
2.5	FID Slots . . . . .	14
2.5.1	Slot 0 . . . . .	14
2.5.2	Slot 1 . . . . .	15
2.5.3	Slot 2 . . . . .	16
<b>A</b>	<b>Summary</b>	<b>17</b>
A.1	Status . . . . .	17
A.2	Comments . . . . .	17

# 1 Front

seq_num	600686	Sequence number
obs_id	9545	Observation id
title	Galaxies across the Octaves: A Chandra Legacy Survey of SINGS Galaxies	Proposal title
observer	Dr Leigh Jenkins	Principal investigator
object	NGC 4826	Source name
dtcycle	0	&#160
cycle	P	events from which exps? Prim/Second/Both
ra_targ	194.182917	Observer's specified target RA [deg]
dec_targ	21.683361	Observer's specified target Dec [deg]
ra_nom	194.17758110135	Nominal RA [deg]
dec_nom	21.689502537277	Nominal Dec [deg]
roll_nom	110.15858806801	Nominal Roll [deg]
revision	2	Processing version of data
ontime	26290.870388746	Sum of GTIs [s]
livetime	25957.959557422	Livetime [s]
ontime2	26290.91142875	Sum of GTIs [s]
ontime3	26287.506268382	Sum of GTIs [s]
ontime5	26290.829348743	Sum of GTIs [s]
ontime6	26290.788338721	Sum of GTIs [s]
ontime7	26290.870388746	Sum of GTIs [s]
ontime8	26284.22414875	Sum of GTIs [s]
l2events	459281	Number of level 2 events

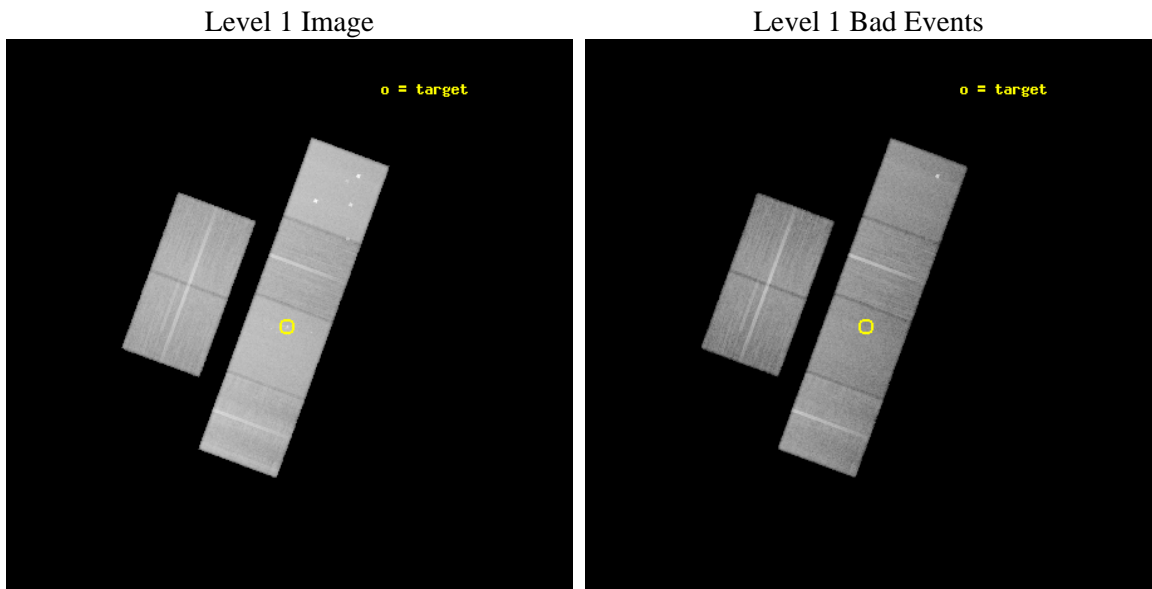




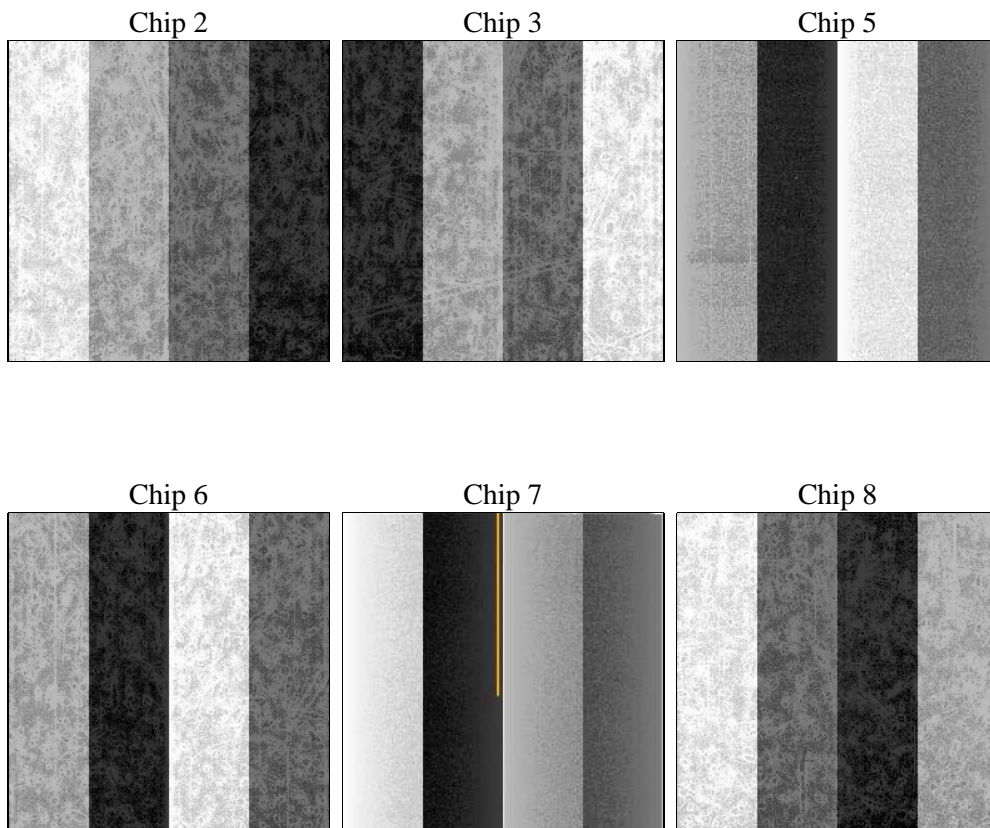
## 2 OBI

### 2.1 OBI

#### 2.1.1 Images



#### 2.1.2 Bias



### 2.1.3 Parameters

obi_num	0	Obi number	sched_exp_time	26533.876000	[s] Scheduled observation exposure time
ascdsver	8.4.4	Processing system revision	ontime	26290.870388746	Sum of GTIs [s]
caldsver	4.4.9	&#160	ontime2	26290.91142875	Sum of GTIs [s]
date	2012-05-31T14:57:09	Date and time of file creation	ontime3	26287.506268382	Sum of GTIs [s]
revision	2	Processing version of data	ontime5	26290.829348743	Sum of GTIs [s]
			ontime6	26290.788338721	Sum of GTIs [s]
			ontime7	26290.870388746	Sum of GTIs [s]
			ontime8	26284.22414875	Sum of GTIs [s]
			l1events	1969712	Number of level 1 events

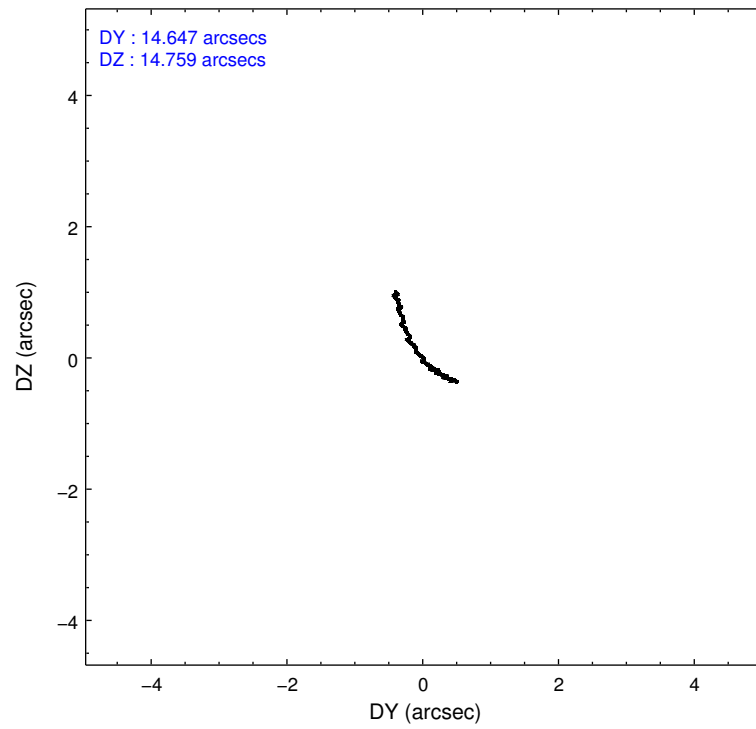
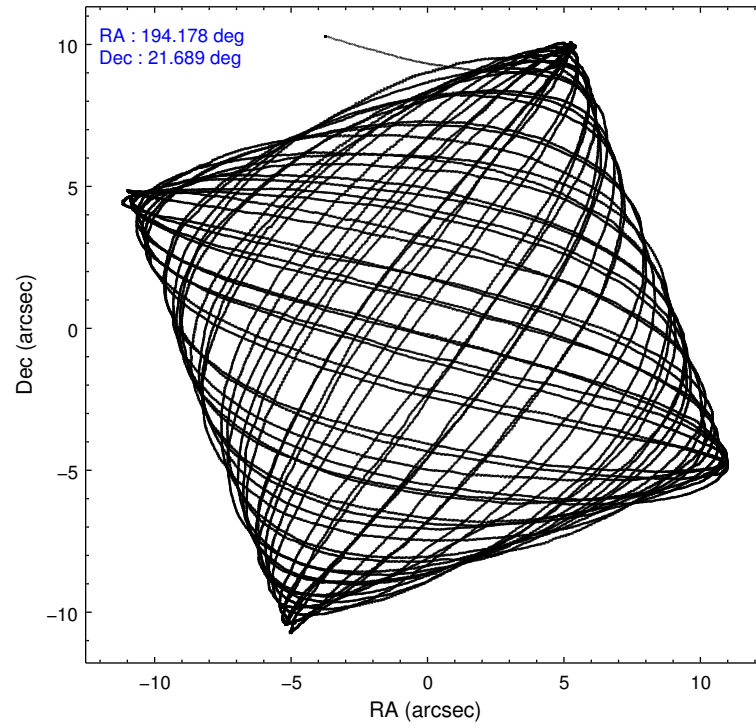
### 2.1.4 Events

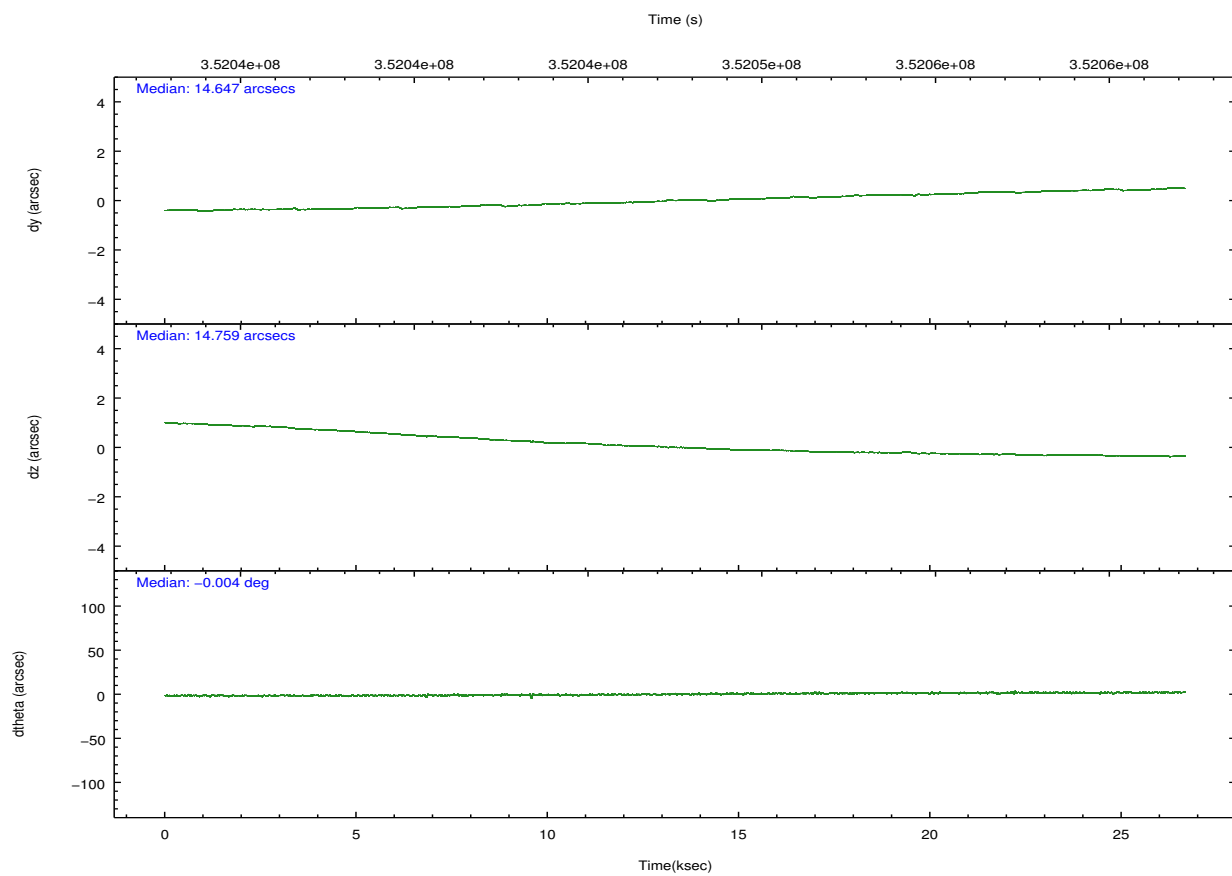
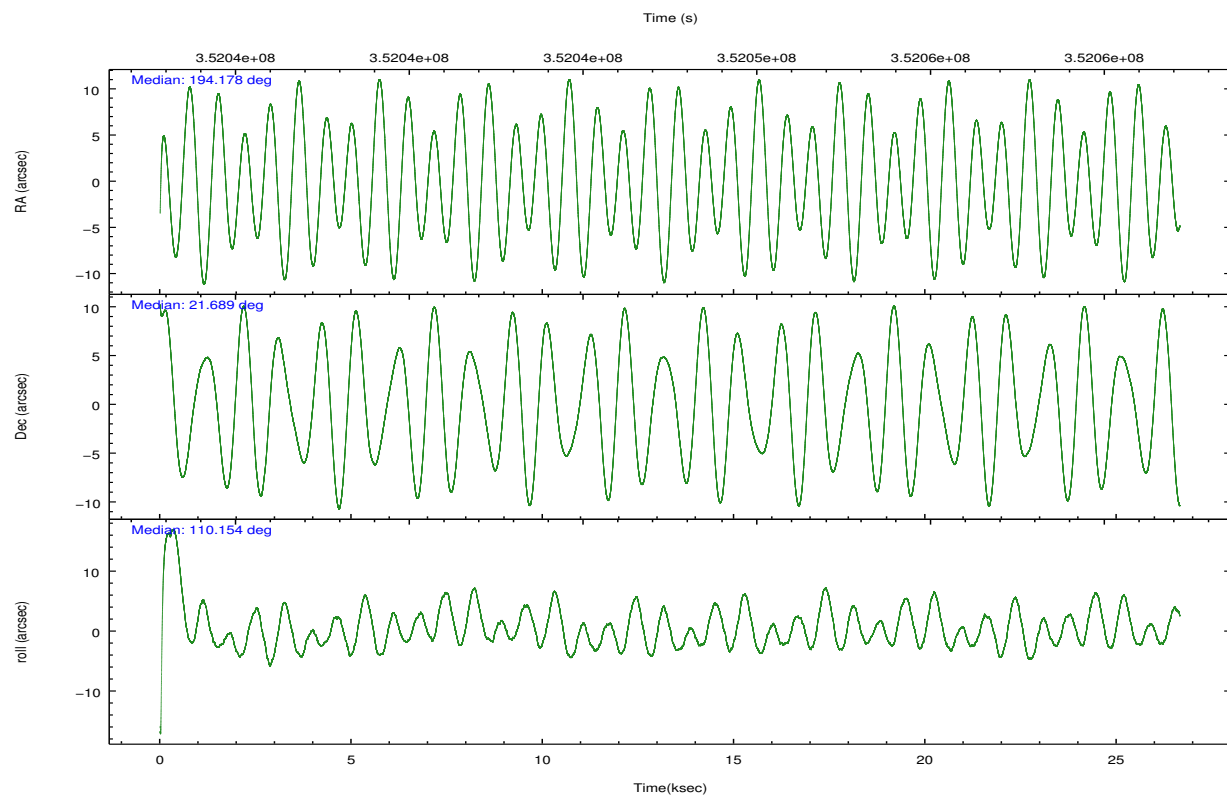
	ccd 2	ccd 3	ccd 5	ccd 6	ccd 7	ccd 8		ccd 2	ccd 3	ccd 5	ccd 6	ccd 7	ccd 8
level 1 events	275263	260085	429929	272478	382050	349907	grade 0 events	13360	14498	19154	13014	14722	24937
rejected events	243800	227471	231017	239330	220932	270342		4%	5%	4%	4%	3%	7%
rejected %	88%	87%	53%	87%	57%	77%	grade 1 events	177	171	690	164	414	293
								0%	0%	0%	0%	0%	0%
							grade 2 events	6943	6465	62034	7332	33265	17940
								2%	2%	14%	2%	8%	5%
							grade 3 events	2954	3051	6810	3097	13666	8248
								1%	1%	1%	1%	3%	2%
							grade 4 events	2839	2885	6563	3010	13568	7725
								1%	1%	1%	1%	3%	2%
							grade 5 events	11487	12468	30095	12813	35763	17462
								4%	4%	6%	4%	9%	4%
							grade 6 events	5372	5722	104377	6703	85923	20720
								1%	2%	24%	2%	22%	5%
							grade 7 events	232131	214825	200206	226345	184729	252582
								84%	82%	46%	83%	48%	72%

## 2.2 Compared Parameters

Parameter	Planned	Actual	Parameter	Planned	Actual
Instrument	ACIS	ACIS	Obspar format version number	7	7
Detector	ACIS-235678	ACIS-235678	Obspar file type	PREDICTED	ACTUAL
Grating	NONE	NONE	Obspar update status	NONE	UPDATED
Data mode	FAINT	FAINT	CCD I0 on	N	N
Observation mode	POINTING	POINTING	CCD I1 on	N	N
[deg] Pointing RA	194.200435	194.1775811013488	CCD I2 on	O1	Y
[deg] Pointing Dec	21.672253	21.68950253727702	CCD I3 on	O2	Y
[deg] Pointing Roll	109.993537	110.1585880680053	CCD S0 on	N	N
[mm] SIM focus pos	-0.684267	-0.6828225247311905	CCD S1 on	Y	Y
[mm] SIM defocus	0	0.001444936568705701	CCD S2 on	Y	Y
[mm] SIM translation stage pos	-190.132523	-190.1400660498719	CCD S3 on	Y	Y
[mm] SIM translation stage offset	0	0.00754346686406393	CCD S4 on	Y	Y
[s] Observation start time (MET)	352034311.184000	352033115.73933	CCD S5 on	N	N
Observation start date	2009-02-26T11:17:25	2009-02-26T10:58:35	Number of optional ACIS chips dropped	0	0
[s] Observation end time (MET)	352060845.184000	352061070.56571	On-chip summing requested	N	N
Observation end date	2009-02-26T18:39:39	2009-02-26T18:44:30	Subarray requested	NONE	NONE
Read mode	TIMED	TIMED	Alternating exposures requested	N	N
			[s] Primary exposure time	0.000000	3.2

## 2.3 Aspect



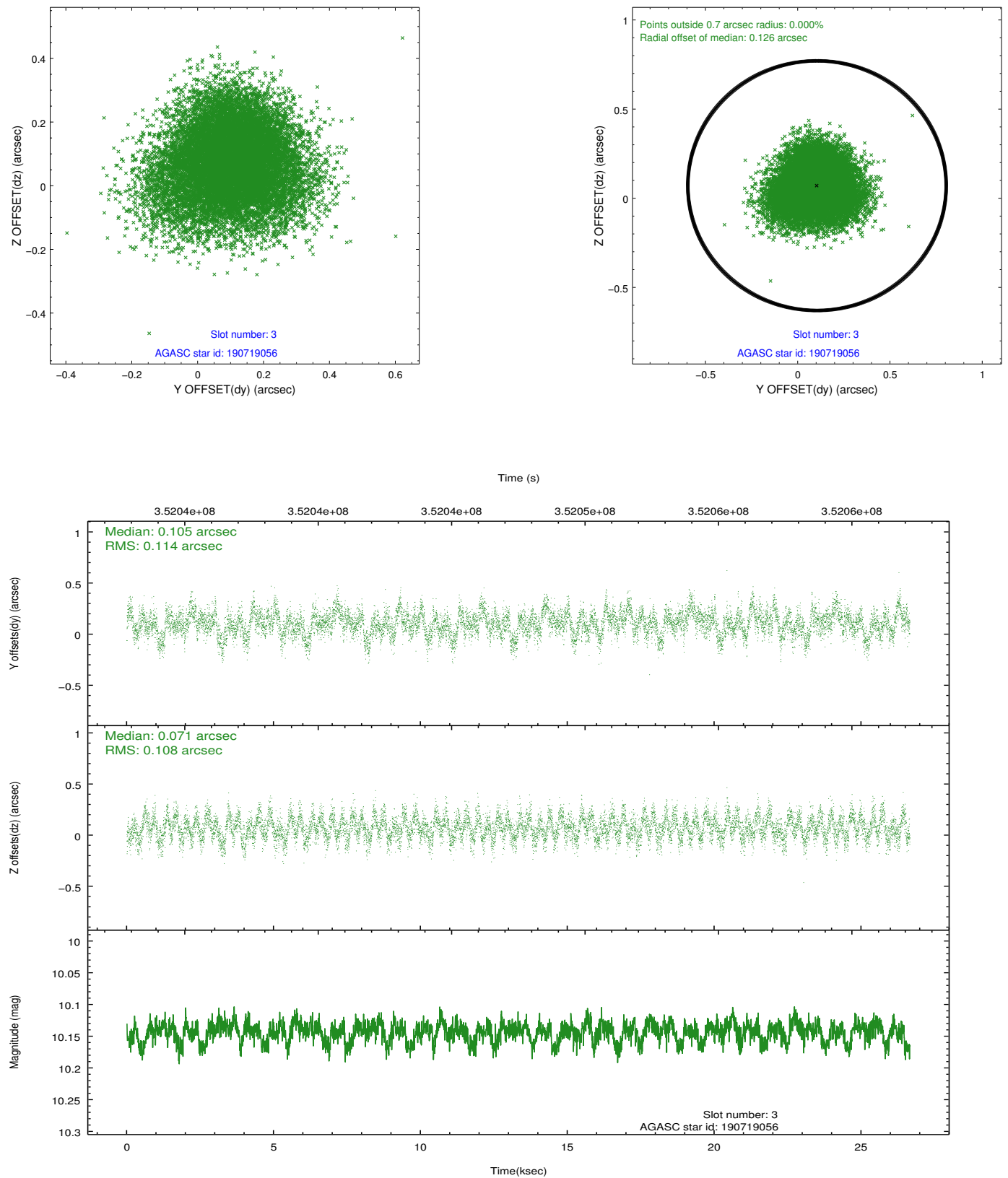


### Slot Statistics

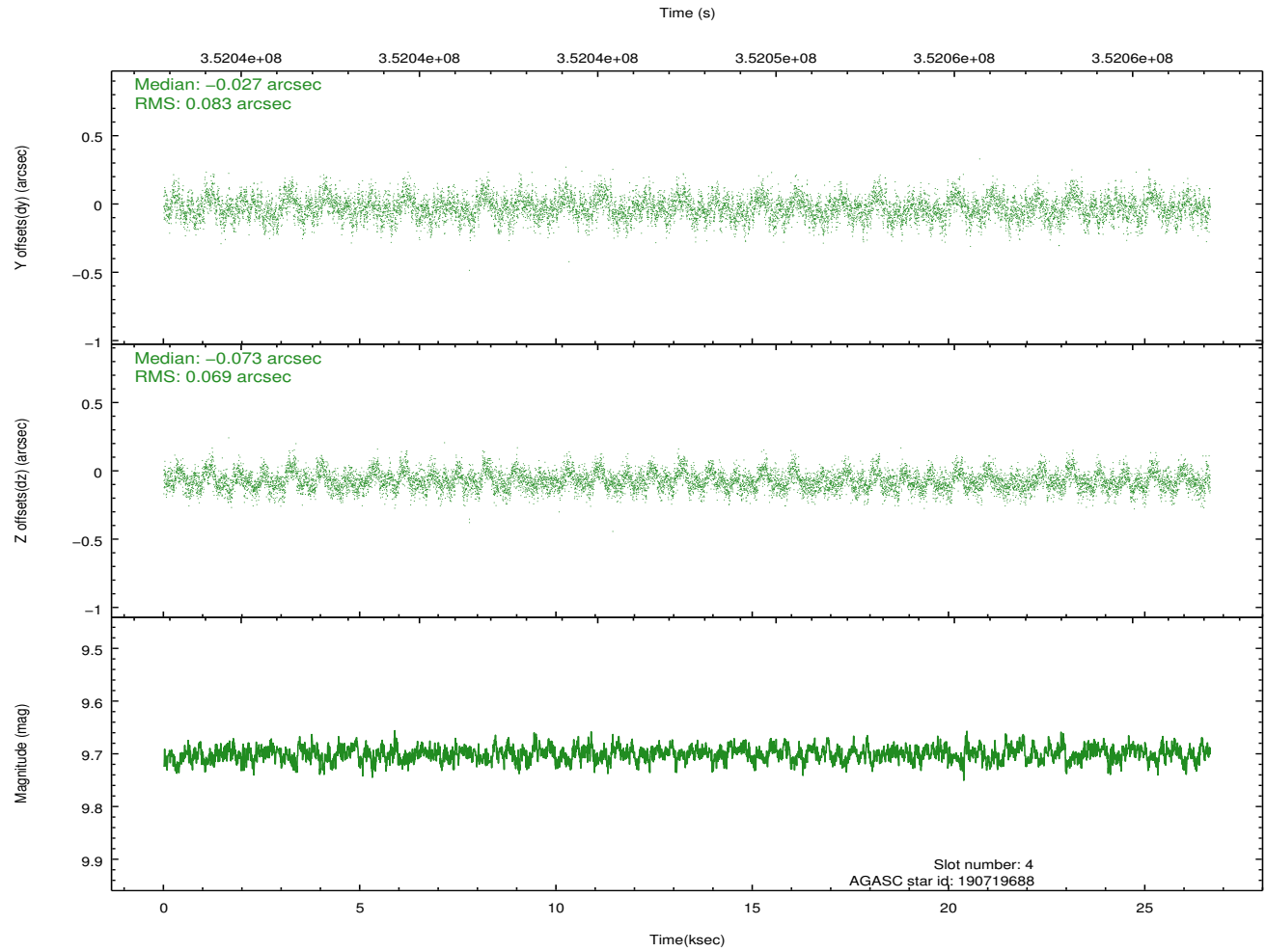
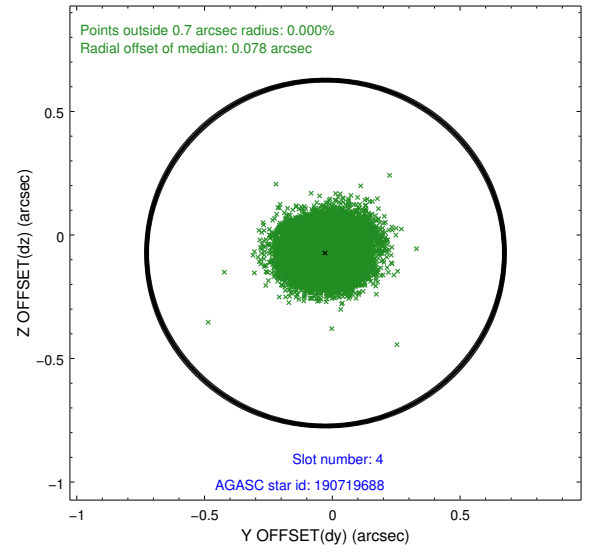
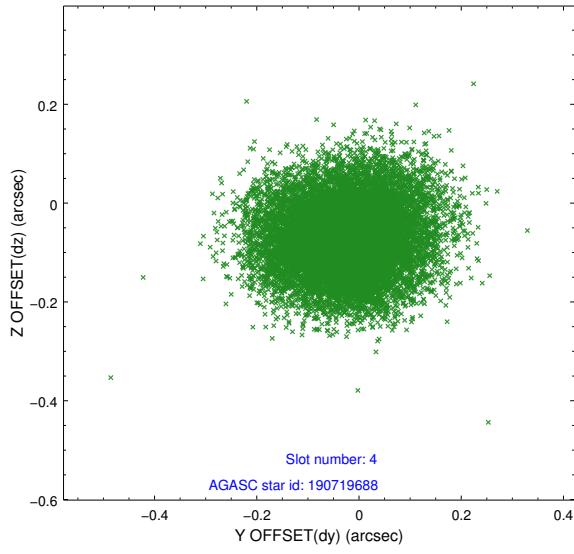
slot	status	id	mag	n_pts	med_dy	med_dz	dr1	dr2	ra	dec	mean_y	mean_z
0	FID	ACIS-S-2	6.88	6502	-0.015	-0.019	0.010	0.016	0.000000	0.000000	-767.62	-1736.29
1	FID	ACIS-S-5	6.99	6502	-0.098	-0.018	0.017	0.026	0.000000	0.000000	-1820.86	165.58
2	FID	ACIS-S-6	7.10	6502	0.088	0.045	0.018	0.028	0.000000	0.000000	393.98	809.66
3	GUIDE	190719056	10.14	12973	0.105	0.071	0.168	0.267	194.588717	21.325530	-1616.25	-797.30
4	GUIDE	190719688	9.70	12985	-0.027	-0.073	0.115	0.185	193.909737	22.180853	2052.88	284.58
5	GUIDE	190720152	7.11	13003	-0.170	-0.235	0.081	0.133	193.666732	22.107929	2085.14	1135.34
6	GUIDE	190843704	7.35	13000	-0.003	0.080	0.074	0.118	194.670543	22.042885	718.00	-1930.61
7	GUIDE	190845144	8.87	12996	0.095	0.155	0.082	0.130	194.692633	22.213679	1273.66	-2208.16

## 2.4 Star Slots

### 2.4.1 Slot 3

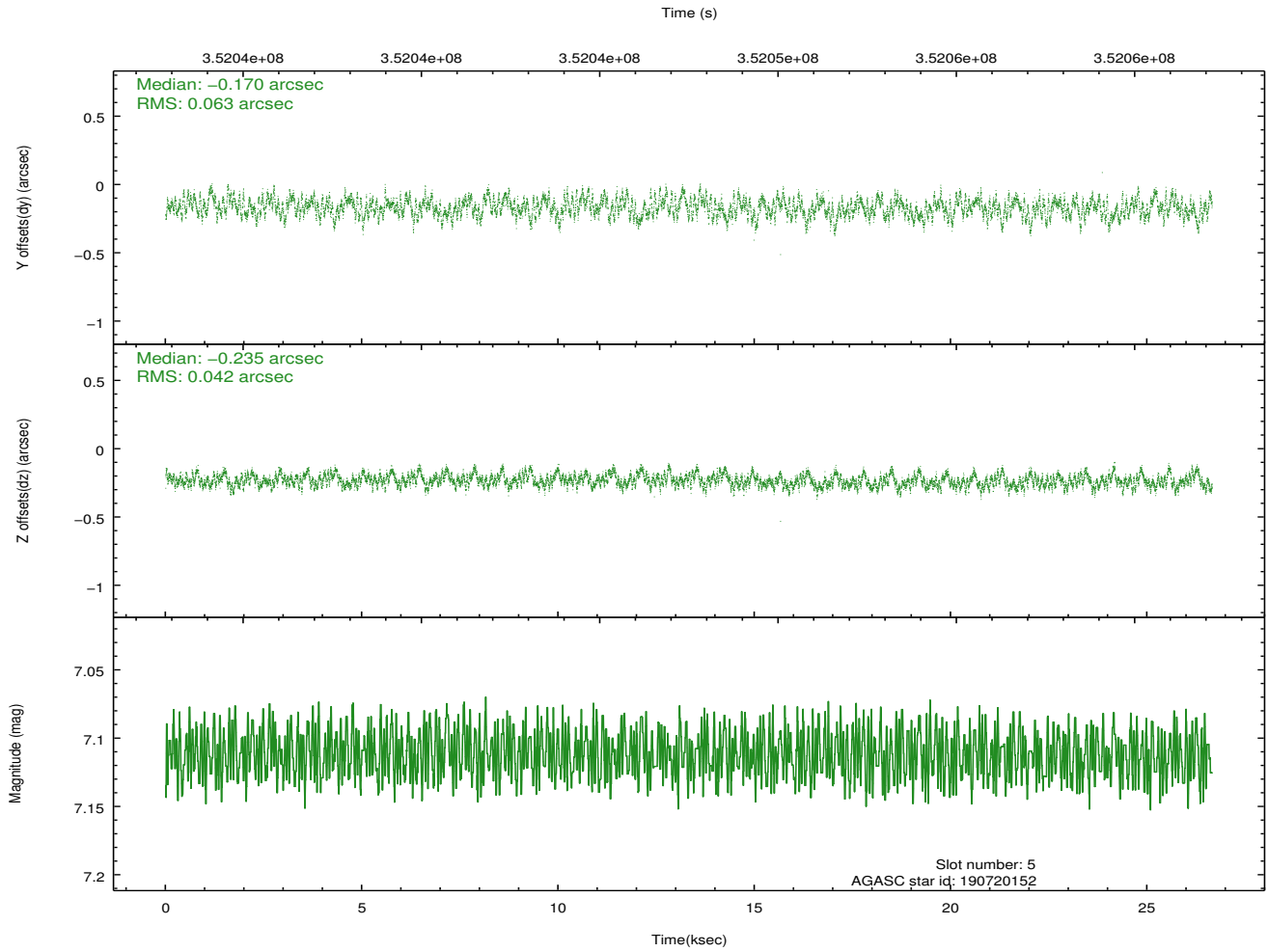
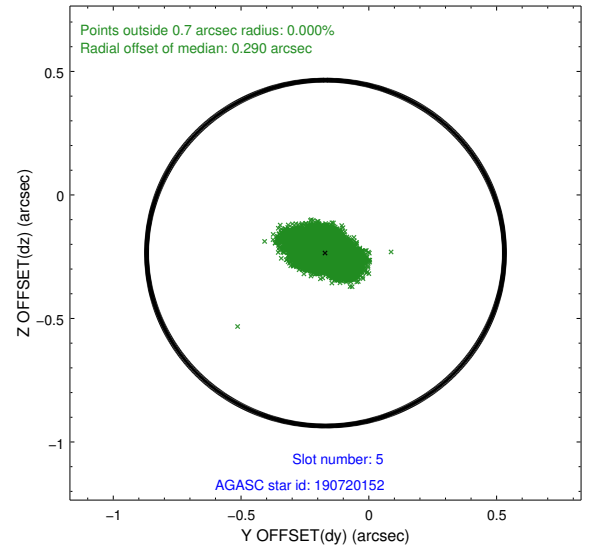
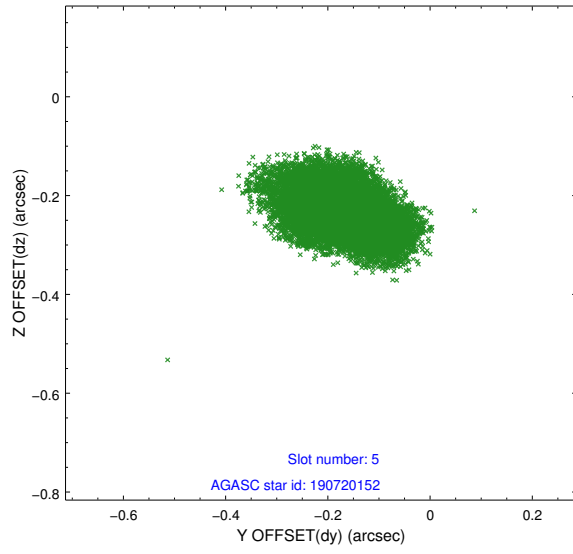


## 2.4.2 Slot 4

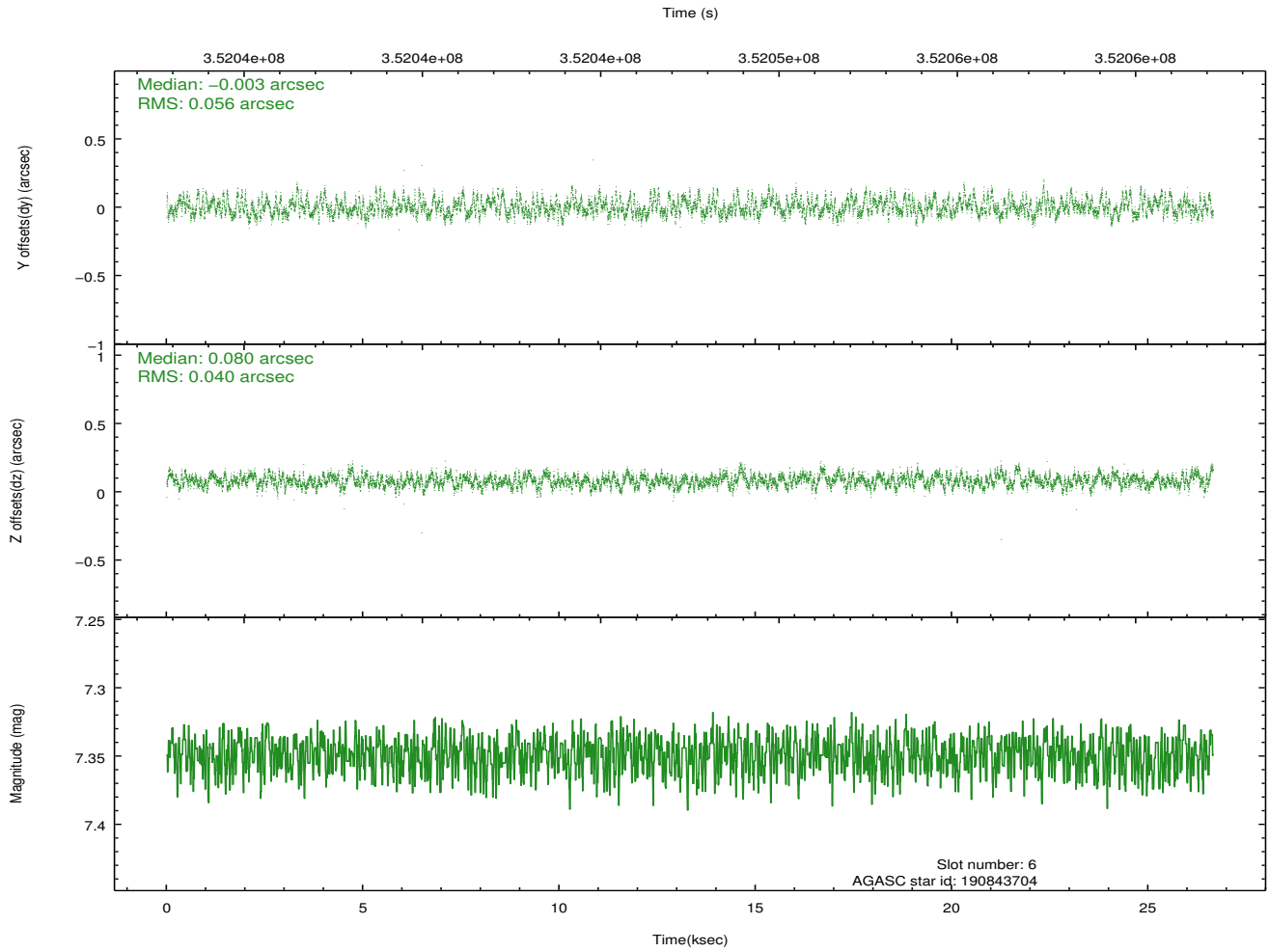
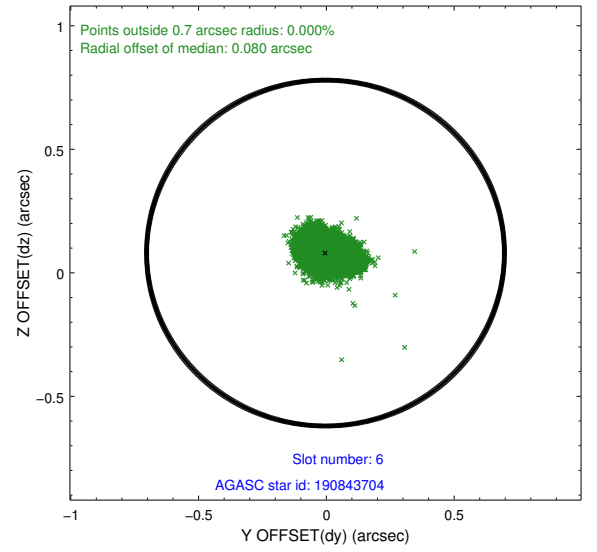
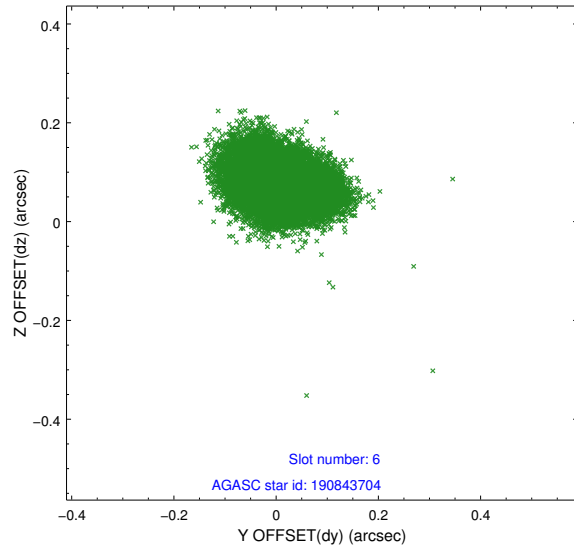




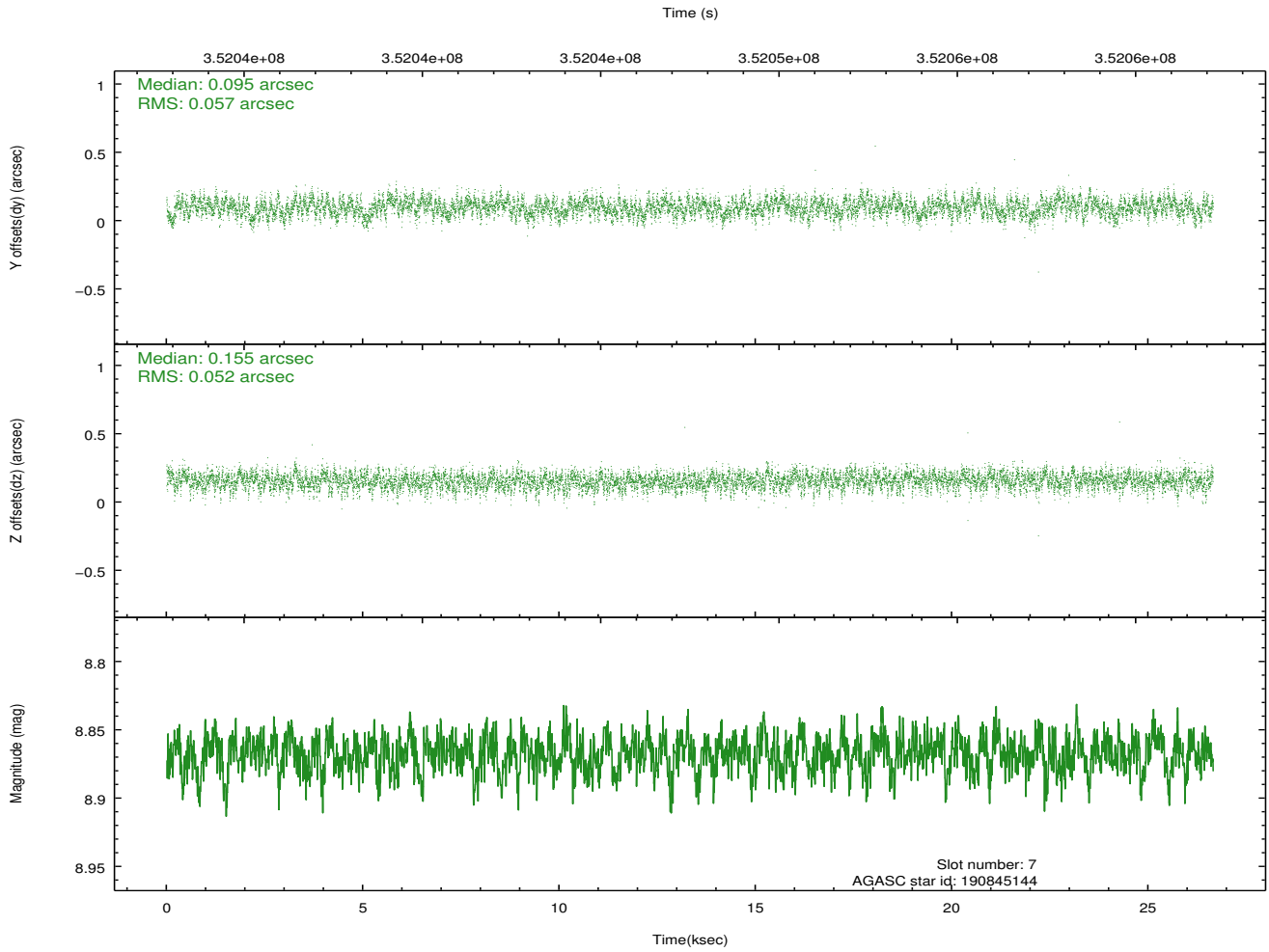
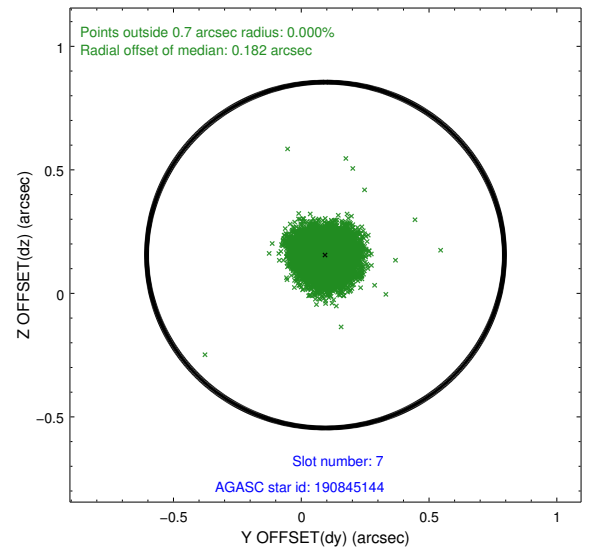
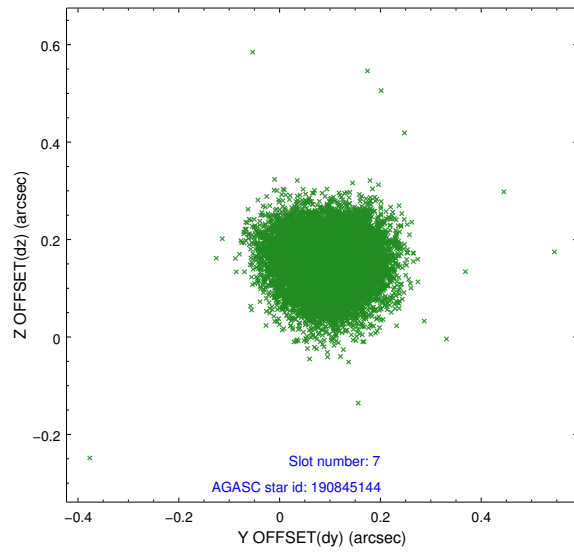
### 2.4.3 Slot 5



## 2.4.4 Slot 6

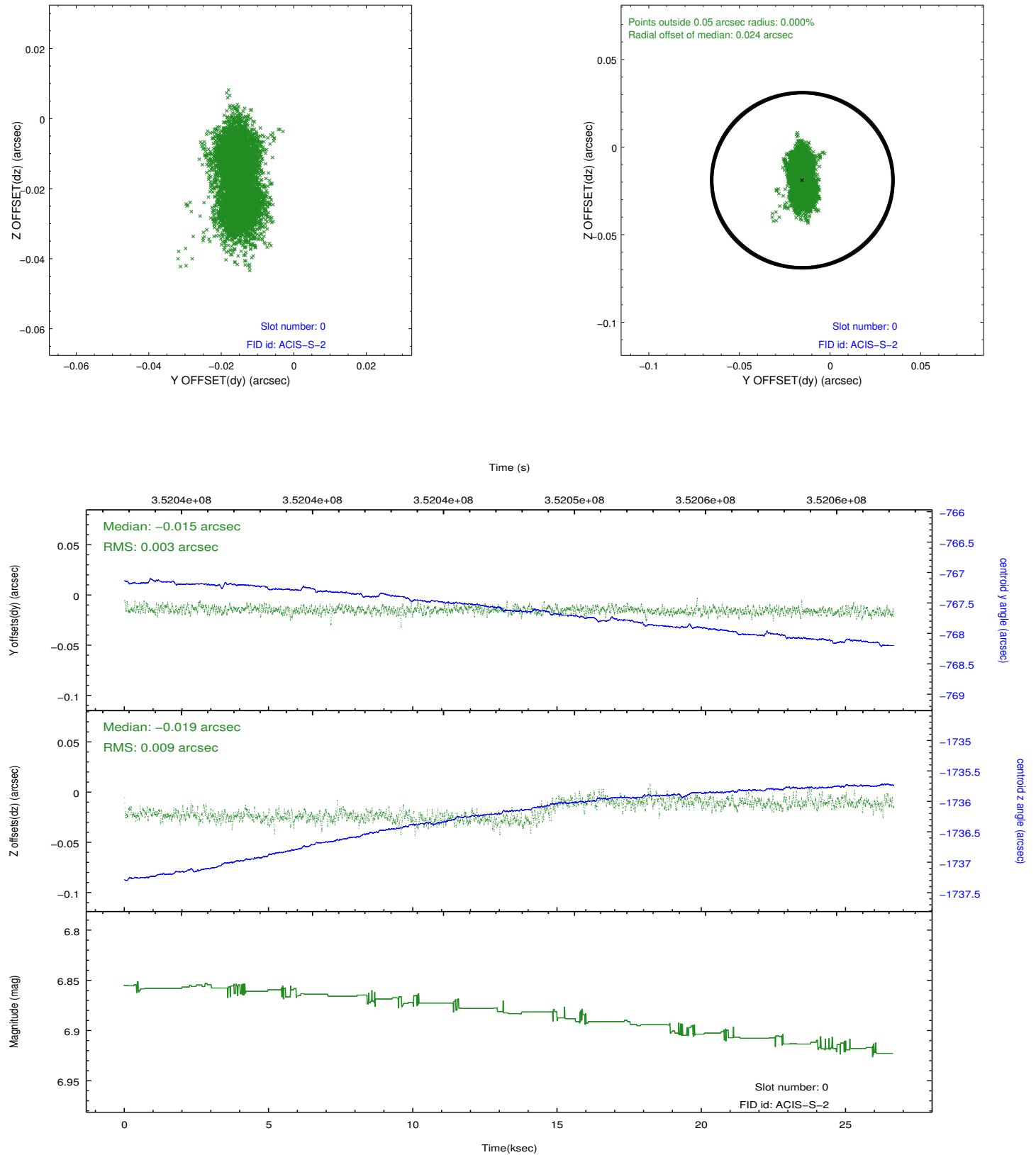


## 2.4.5 Slot 7

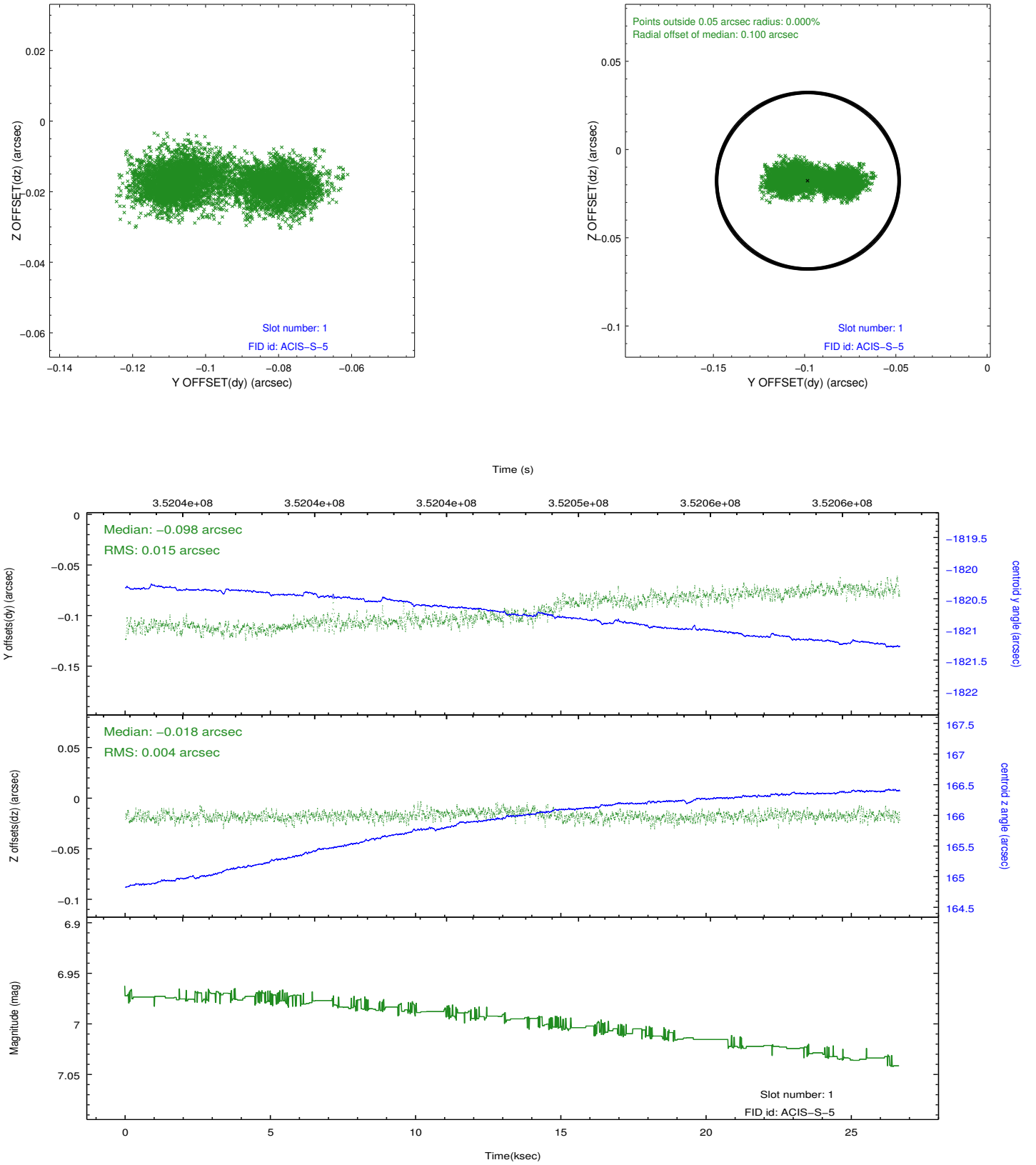


## 2.5 FID Slots

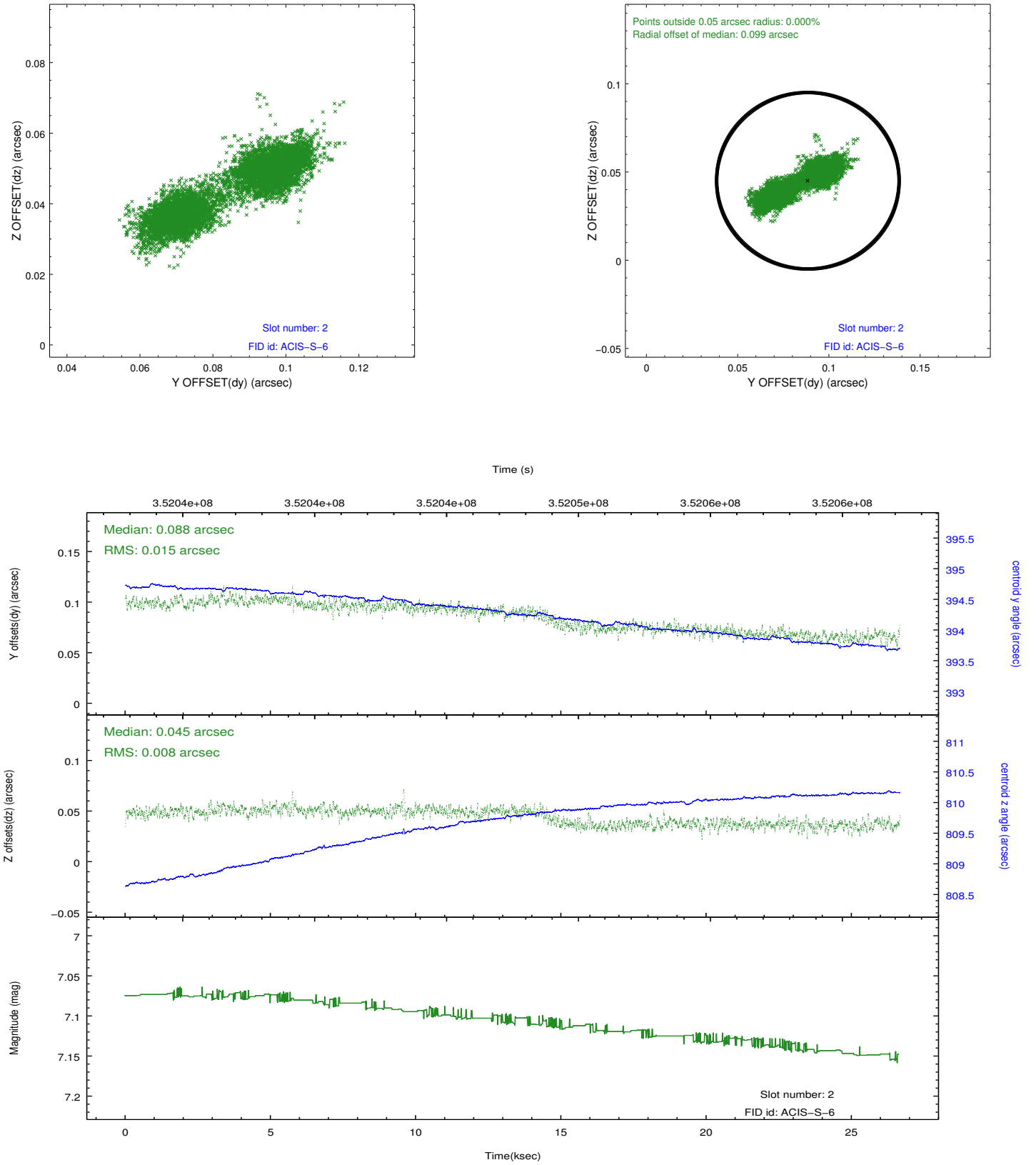
### 2.5.1 Slot 0



## 2.5.2 Slot 1



### 2.5.3 Slot 2



## A Summary

### A.1 Status

V&V Scientist	Jen Lauer
V&V Date (YYYY-MM-DD)	2012.06.06
V&V Edition	1
V&V Disposition and Status	OK
V&V Charge Time	26.2911999

### A.2 Comments

Roll preference could not be met.