

V&V Reference Report

L2 ASCDS Version : 8.4.4

Observation 8685 - L2 Version 2
Chandra X-Ray Center

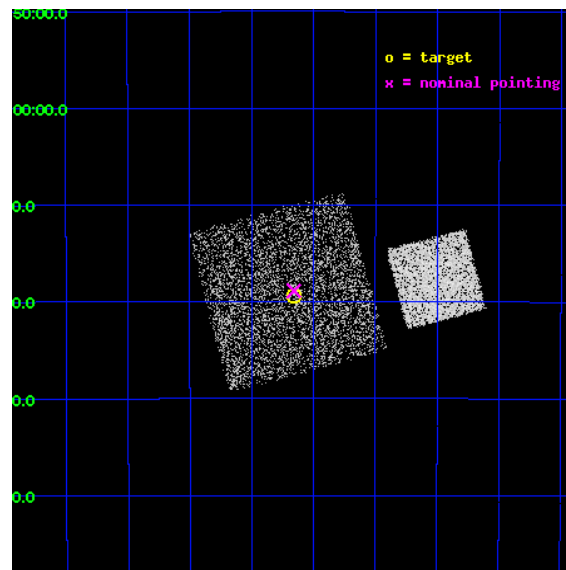
L2 Processing Date : May 15 2012

Contents

1	Front	2
2	OBI	3
2.1	OBI	3
2.1.1	Images	3
2.1.2	Bias	3
2.1.3	Parameters	4
2.1.4	Events	4
2.2	Compared Parameters	5
2.3	Aspect	6
2.4	Star Slots	9
2.4.1	Slot 3	9
2.4.2	Slot 4	10
2.4.3	Slot 5	11
2.4.4	Slot 6	12
2.4.5	Slot 7	13
2.5	FID Slots	14
2.5.1	Slot 0	14
2.5.2	Slot 1	15
2.5.3	Slot 2	16
A	Summary	17
A.1	Status	17
A.2	Comments	17

1 Front

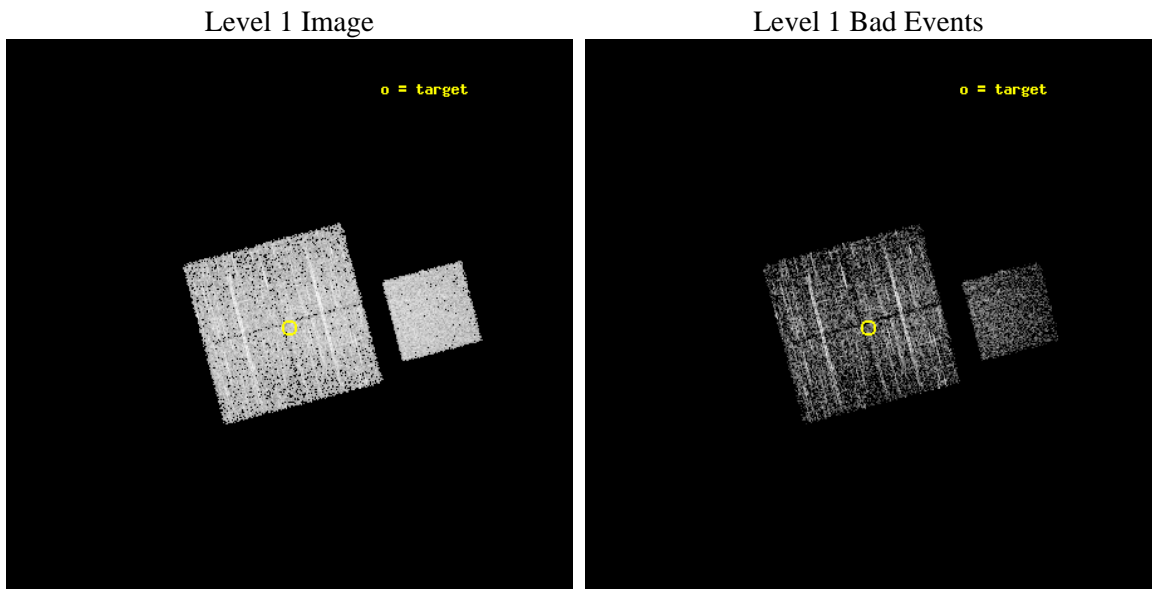
seq_num	400736	Sequence number
obs_id	8685	Observation id
title	The Galactic Bulge Survey: categorising the plethora of faint X-ray sources in the Galactic Bulge	Proposal title
observer	Prof Mariano Mendez	Principal investigator
object	GBSGTO4	Source name
dtcycle	0	
cycle	P	events from which exps? Prim/Second/Both
ra_targ	263.915058	Observer's specified target RA [deg]
dec_targ	-30.322479	Observer's specified target Dec [deg]
ra_nom	263.91461449044	Nominal RA [deg]
dec_nom	-30.314540515362	Nominal Dec [deg]
roll_nom	75.208468142143	Nominal Roll [deg]
revision	2	Processing version of data
ontime	2179.3000167608	Sum of GTIs [s]
livetime	2150.8258576645	Livetime [s]
ontime0	2179.3000167608	Sum of GTIs [s]
ontime1	2179.3000167608	Sum of GTIs [s]
ontime2	2179.3000167608	Sum of GTIs [s]
ontime3	2179.3000167608	Sum of GTIs [s]
ontime7	2179.3000167608	Sum of GTIs [s]
l2events	15229	Number of level 2 events



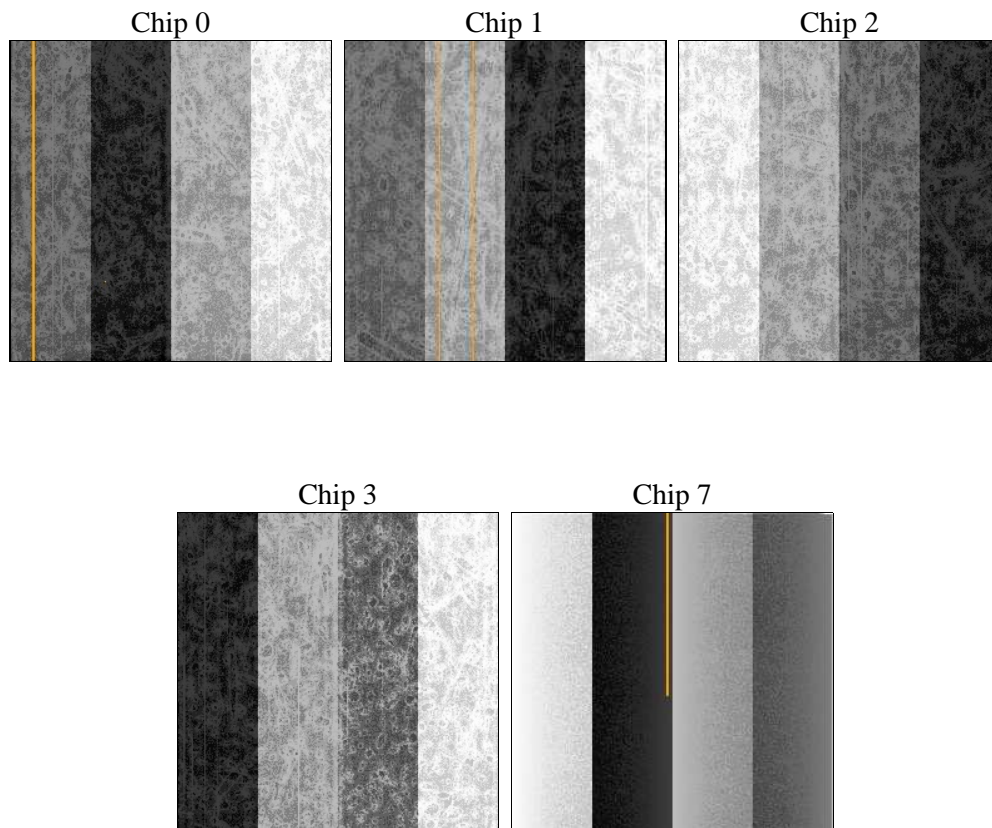
2 OBI

2.1 OBI

2.1.1 Images



2.1.2 Bias



2.1.3 Parameters

obi_num	1	Obi number	sched_exp_time	2000.000000	[s] Scheduled observation exposure time
ascdsver	8.4.4	Processing system revision	ontime	2179.3000167608	Sum of GTIs [s]
caldsver	4.4.9	 	ontime0	2179.3000167608	Sum of GTIs [s]
date	2012-05-15T14:51:46	Date and time of file creation	ontime1	2179.3000167608	Sum of GTIs [s]
revision	2	Processing version of data	ontime2	2179.3000167608	Sum of GTIs [s]
			ontime3	2179.3000167608	Sum of GTIs [s]
			ontime7	2179.3000167608	Sum of GTIs [s]
			l1events	98148	Number of level 1 events

2.1.4 Events

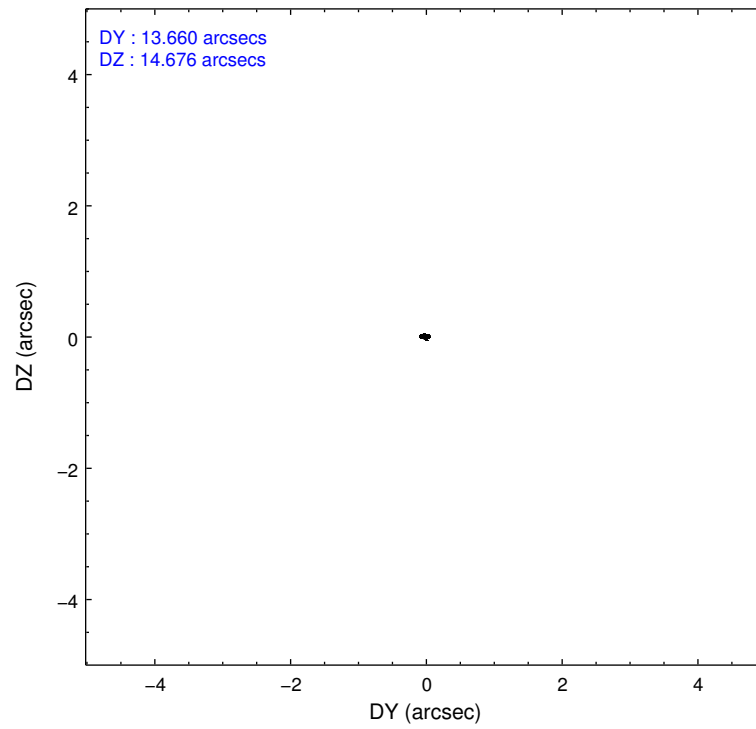
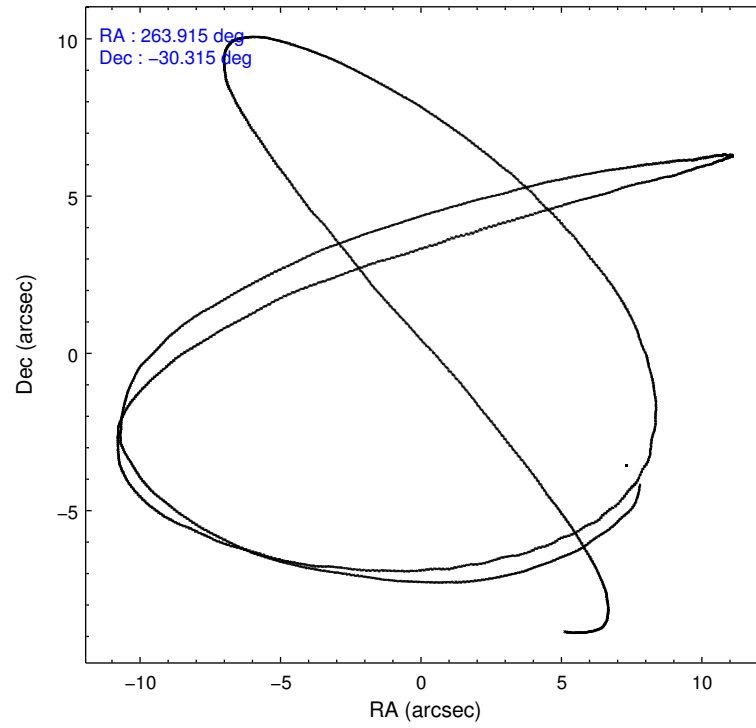
	ccd 0	ccd 1	ccd 2	ccd 3	ccd 7
level 1 events	19216	17952	19414	19402	22164
rejected events	17292	15871	17548	17544	13118
rejected %	89%	88%	90%	90%	59%

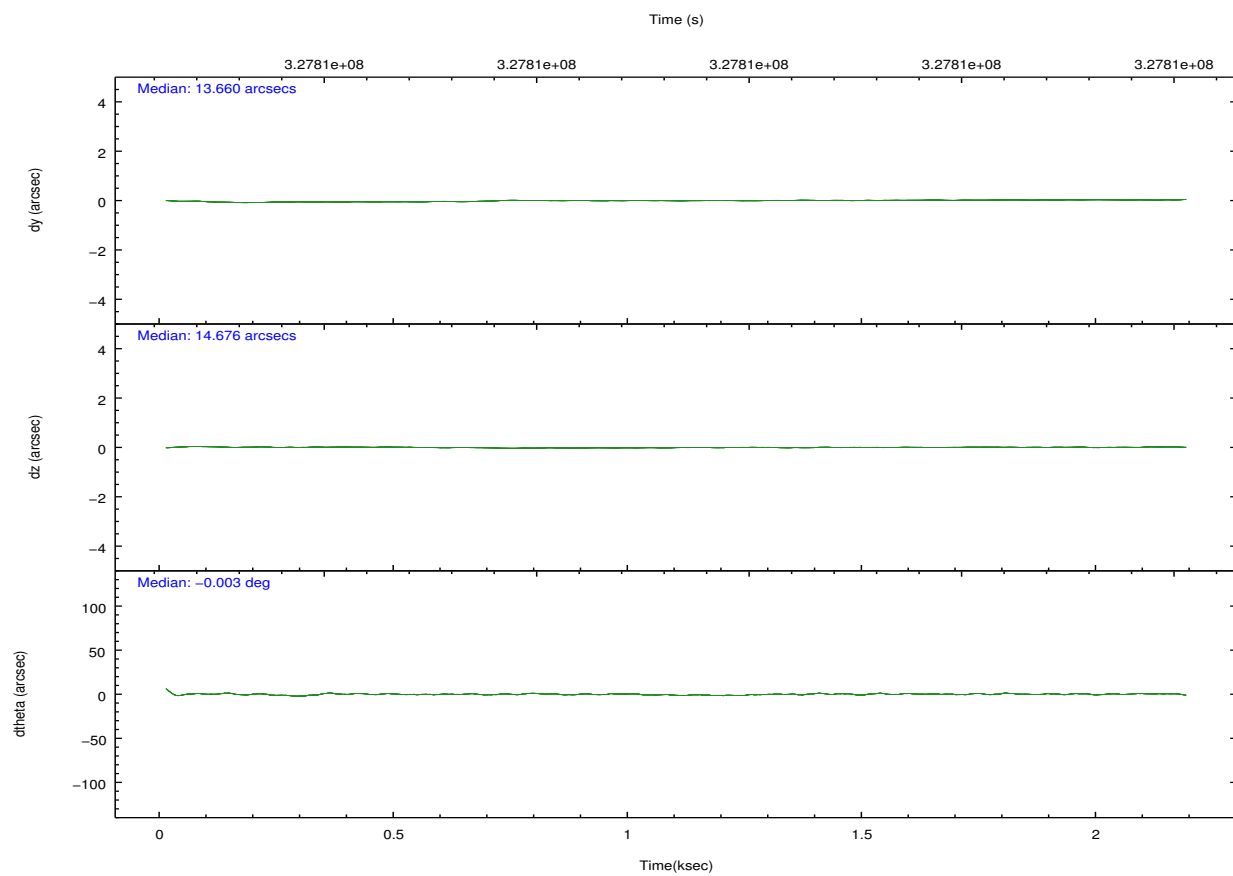
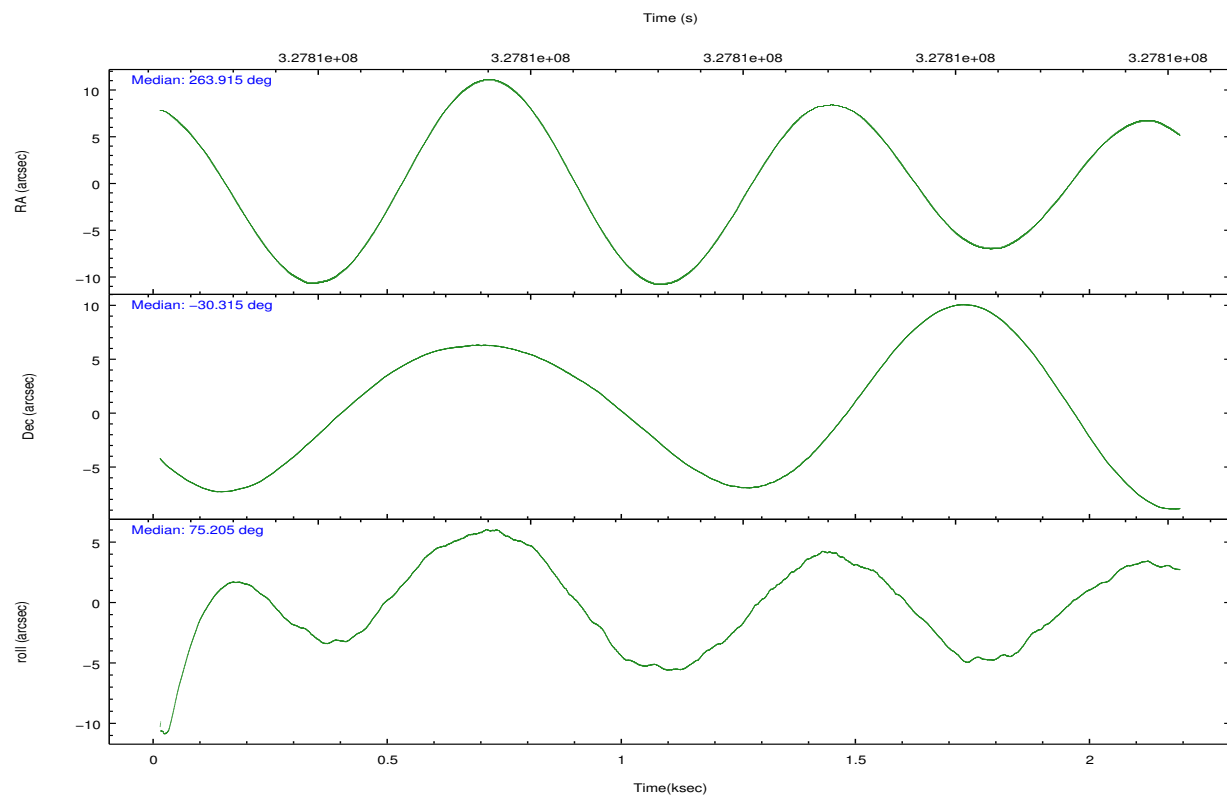
	ccd 0	ccd 1	ccd 2	ccd 3	ccd 7
grade 0 events	897	994	894	877	1010
	4%	5%	4%	4%	4%
grade 1 events	13	13	11	16	26
	0%	0%	0%	0%	0%
grade 2 events	526	474	489	444	2135
	2%	2%	2%	2%	9%
grade 3 events	221	259	214	221	995
	1%	1%	1%	1%	4%
grade 4 events	200	236	199	212	942
	1%	1%	1%	1%	4%
grade 5 events	662	774	649	783	2263
	3%	4%	3%	4%	10%
grade 6 events	386	438	363	365	5279
	2%	2%	1%	1%	23%
grade 7 events	16311	14764	16595	16484	9514
	84%	82%	85%	84%	42%

2.2 Compared Parameters

Parameter	Planned	Actual	Parameter	Planned	Actual
Instrument	ACIS	ACIS	Obspar format version number	7	7
Detector	ACIS-01237	ACIS-01237	Obspar file type	PREDICTED	ACTUAL
Grating	NONE	NONE	Obspar update status	NONE	UPDATED
Data mode	VFAINT	VFAINT	CCD I0 on	Y	Y
Observation mode	POINTING	POINTING	CCD I1 on	Y	Y
[deg] Pointing RA	263.923128	263.9146144904384	CCD I2 on	Y	Y
[deg] Pointing Dec	-30.340905	-30.31454051536188	CCD I3 on	Y	Y
[deg] Pointing Roll	75.004075	75.20846814214318	CCD S0 on	N	N
[mm] SIM focus pos	-0.782348	-0.7809083437167272	CCD S1 on	N	N
[mm] SIM defocus	0	0.001439871863259334	CCD S2 on	N	N
[mm] SIM translation stage pos	-233.592463	-233.5874344608287	CCD S3 on	O1	Y
[mm] SIM translation stage offset	0	-0.005018542100998502	CCD S4 on	N	N
[s] Observation start time (MET)	327812418.184000	327812042.41222	CCD S5 on	N	N
Observation start date	2008-05-22T02:59:13	2008-05-22T02:54:02	Number of optional ACIS chips dropped	0	0
[s] Observation end time (MET)	327814418.184000	327814552.12484	On-chip summing requested	N	N
Observation end date	2008-05-22T03:32:33	2008-05-22T03:35:52	Subarray requested	NONE	NONE
Read mode	TIMED	TIMED	Alternating exposures requested	N	N
			[s] Primary exposure time	0.000000	3.1

2.3 Aspect



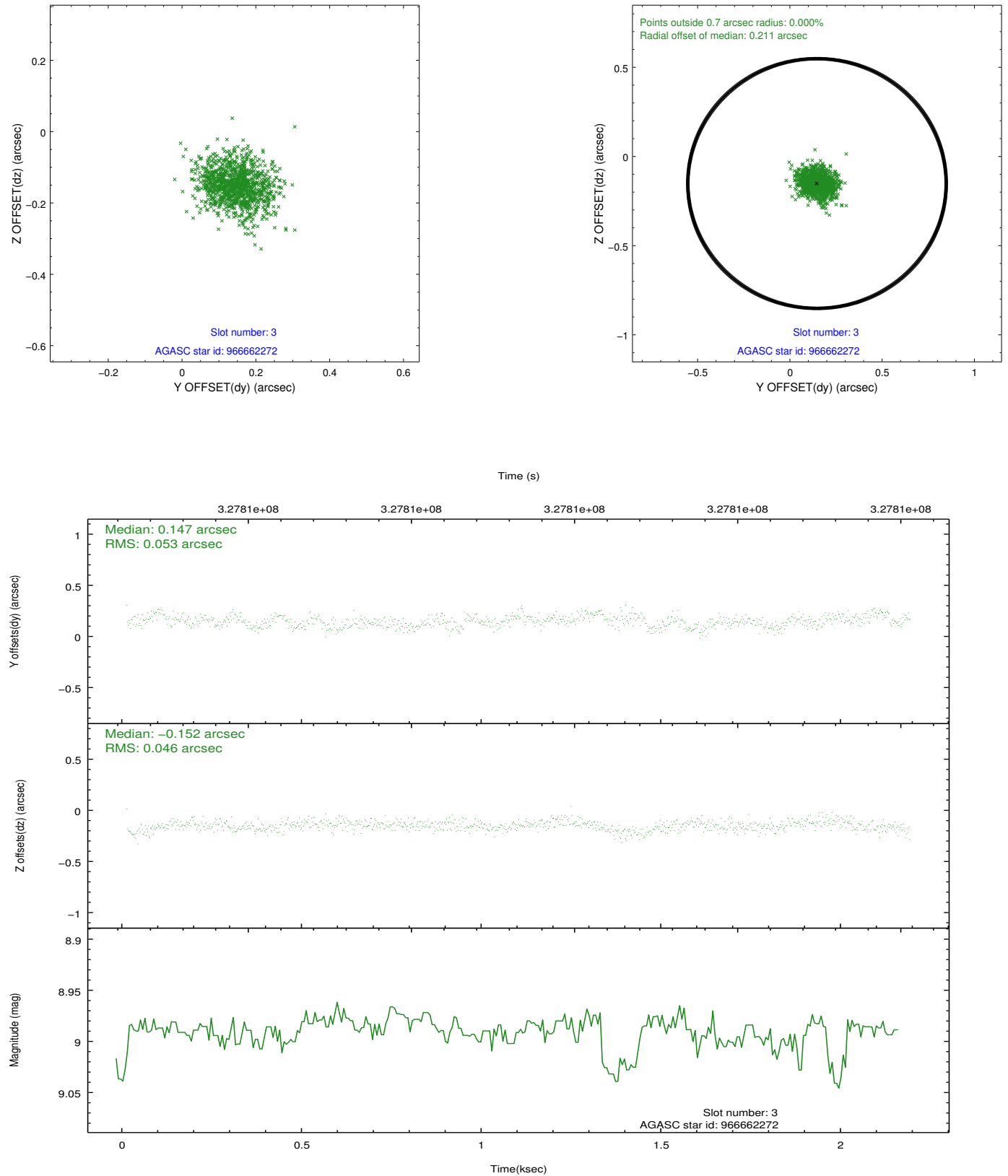


Slot Statistics

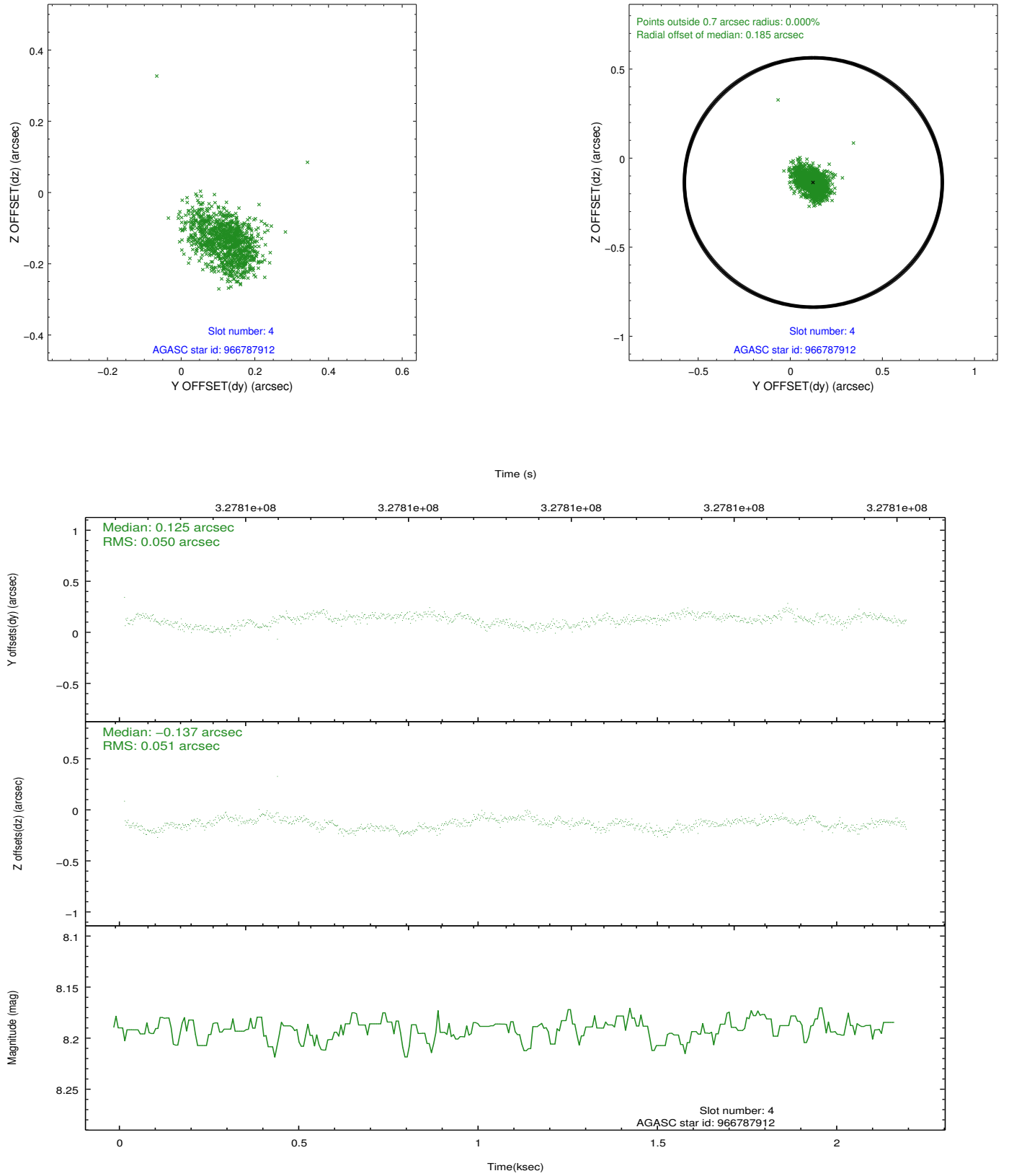
slot	status	id	mag	n_pts	med_dy	med_dz	dr1	dr2	ra	dec	mean_y	mean_z
0	FID	ACIS-I-2	6.95	532	-0.083	-0.065	0.009	0.016	0.000000	0.000000	-768.40	-844.70
1	FID	ACIS-I-4	6.96	532	0.183	0.069	0.006	0.011	0.000000	0.000000	2144.53	1060.12
2	FID	ACIS-I-5	7.03	532	-0.200	0.065	0.009	0.015	0.000000	0.000000	-1818.53	1061.34
3	GUIDE	966662272	8.99	1064	0.147	-0.152	0.075	0.121	263.174237	-30.699270	-1852.76	1903.42
4	GUIDE	966787912	8.19	1064	0.125	-0.137	0.075	0.120	263.385116	-30.640247	-1476.98	1331.60
5	GUIDE	966790696	8.40	1064	0.013	0.225	0.065	0.103	264.462516	-30.909486	-1550.52	-2138.43
6	GUIDE	966794640	9.33	1062	-0.057	-0.150	0.081	0.129	263.854004	-30.029028	1027.85	496.72
7	GUIDE	896406904	9.01	1062	-0.221	0.221	0.084	0.131	264.311862	-29.742267	2395.61	-615.59

2.4 Star Slots

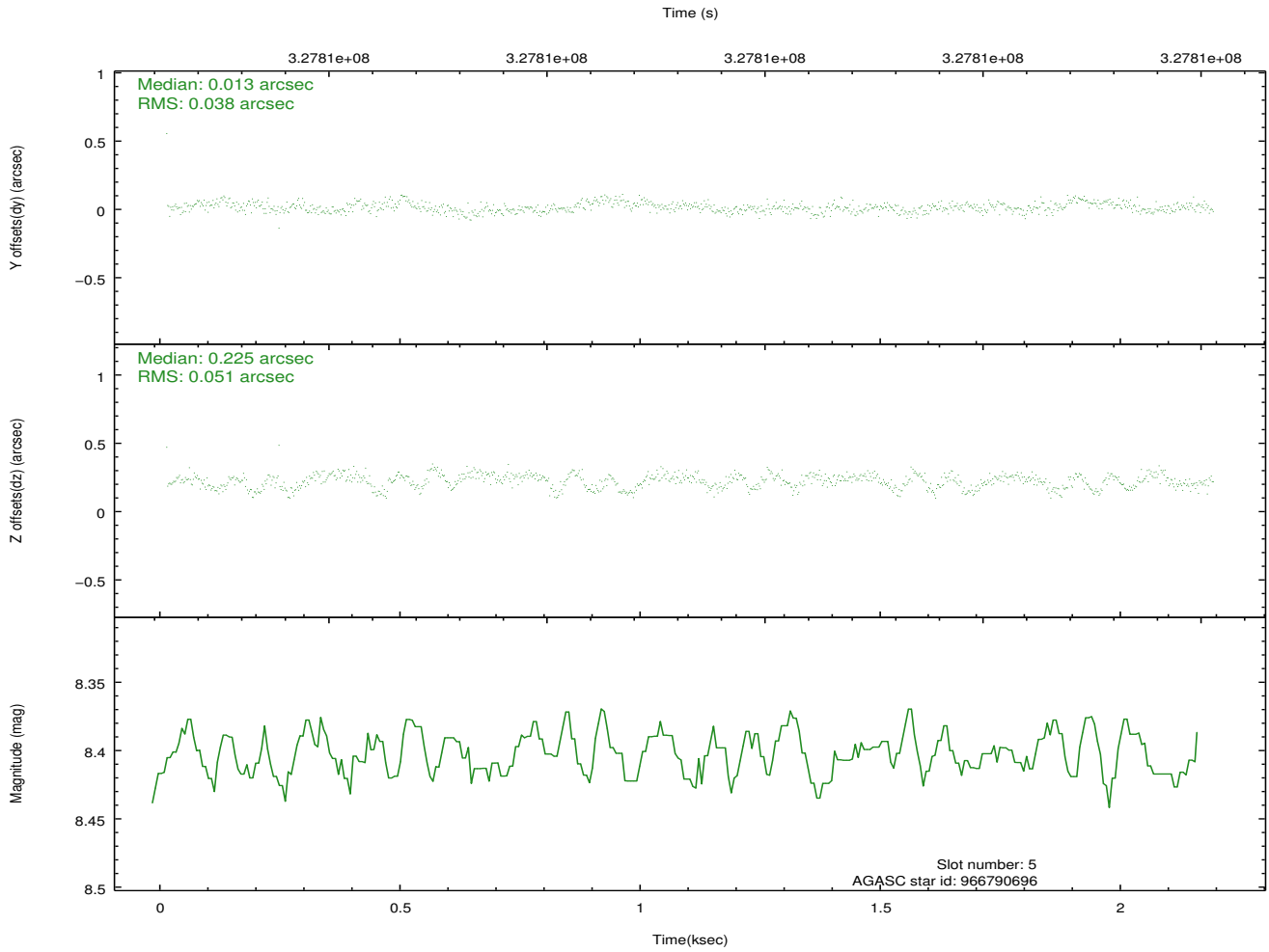
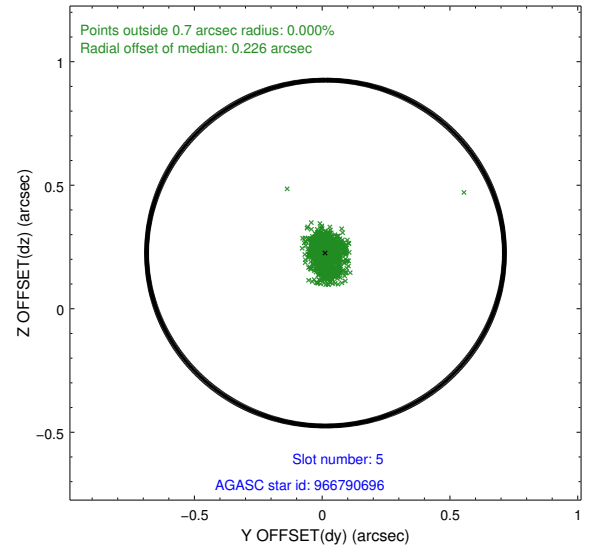
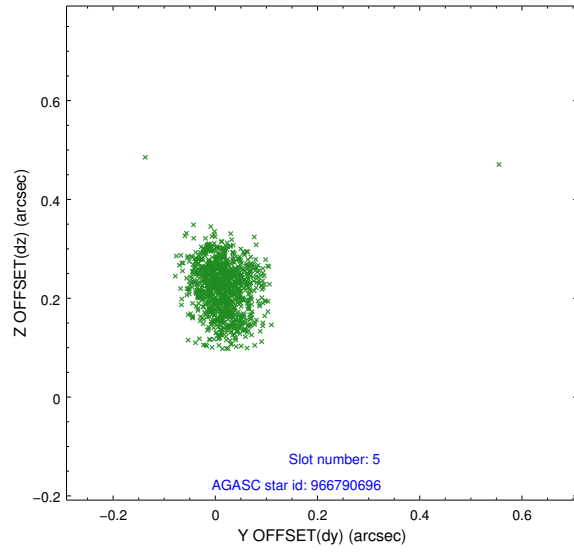
2.4.1 Slot 3



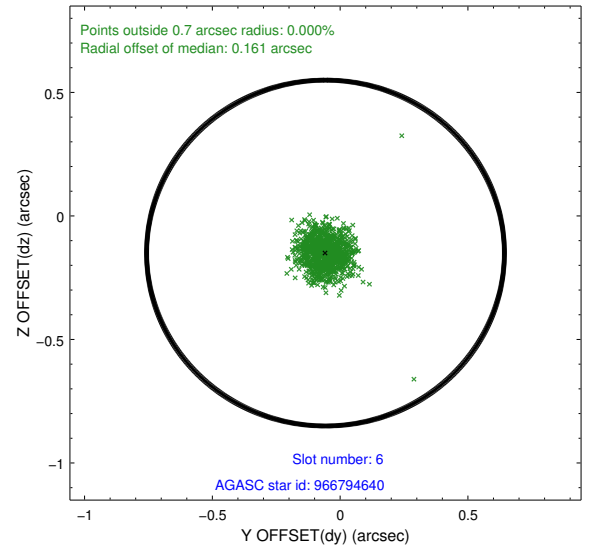
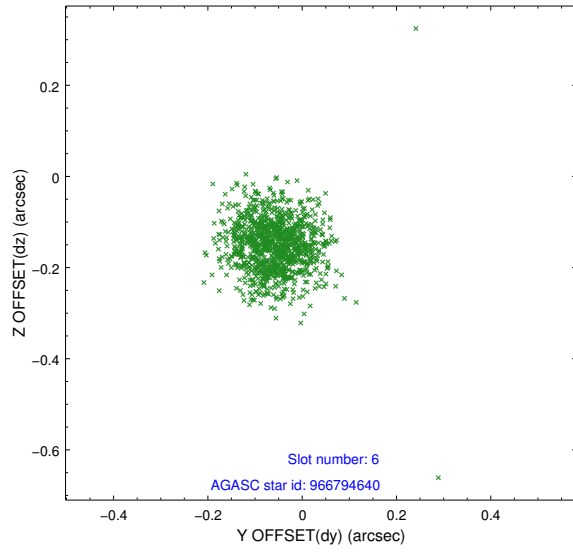
2.4.2 Slot 4



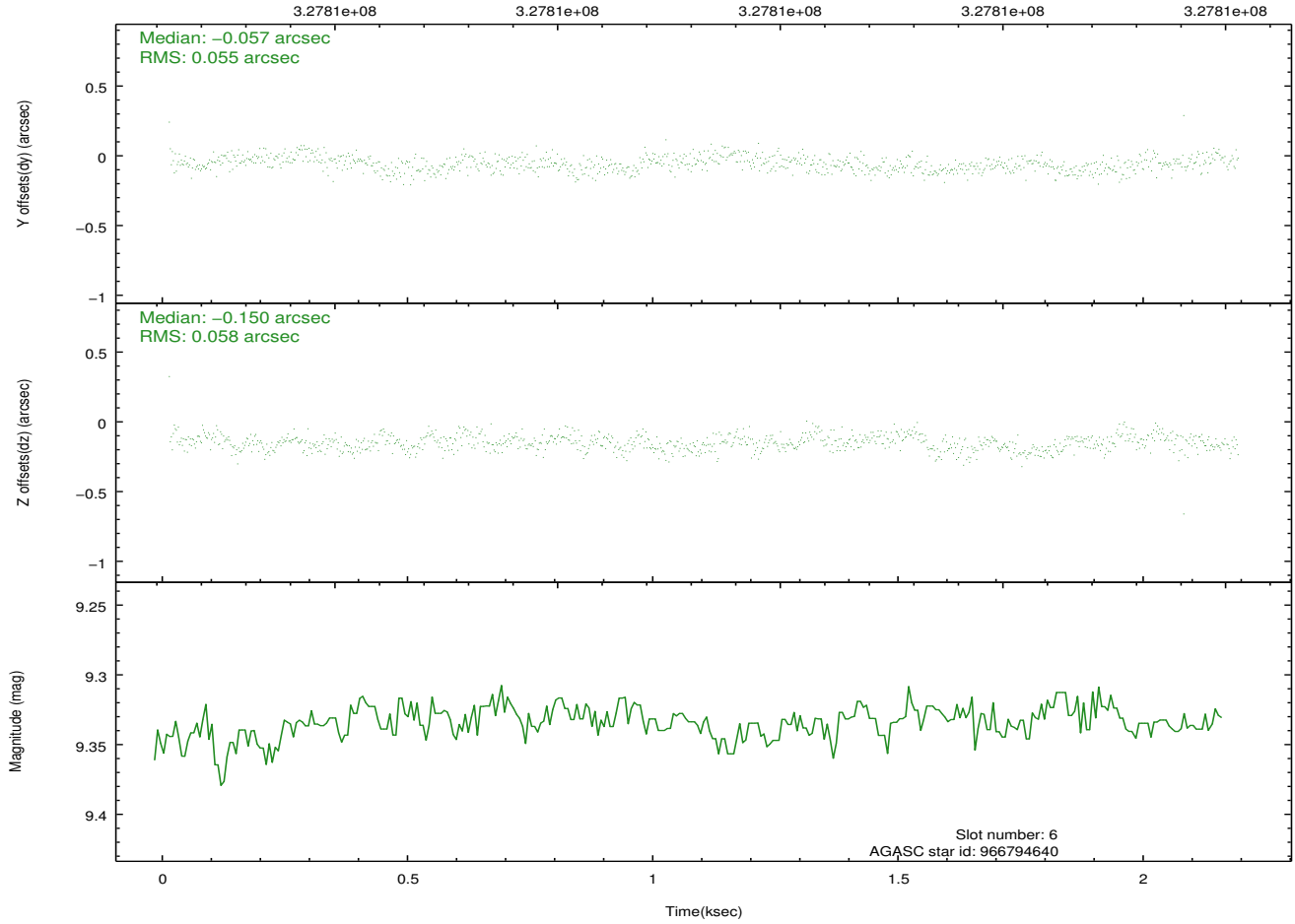
2.4.3 Slot 5



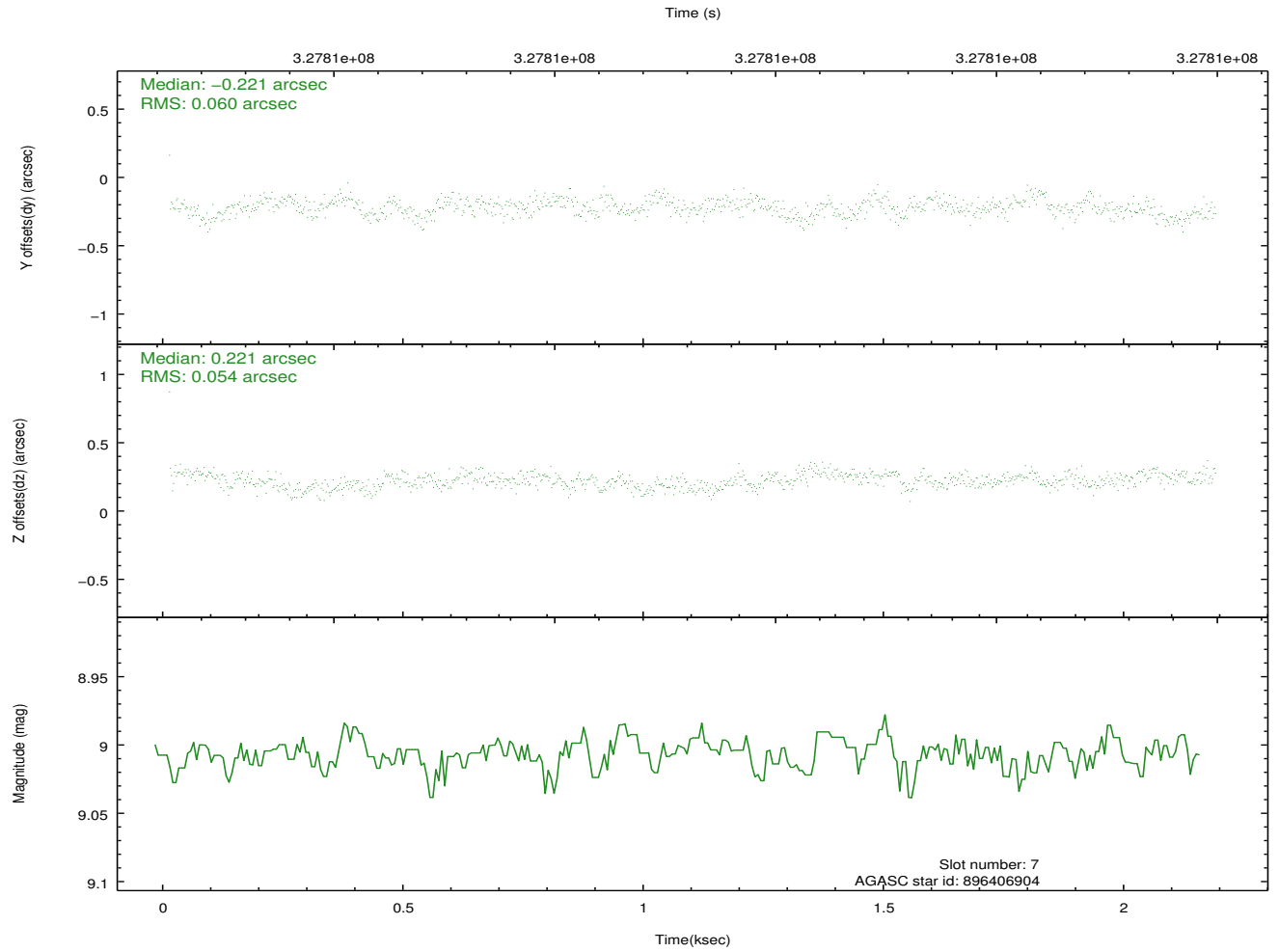
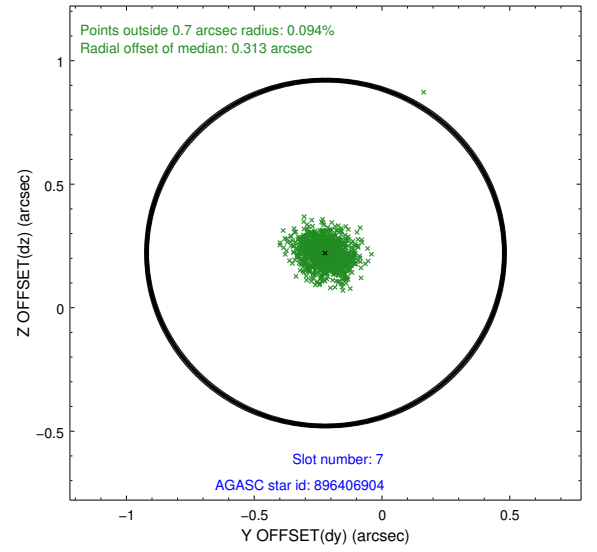
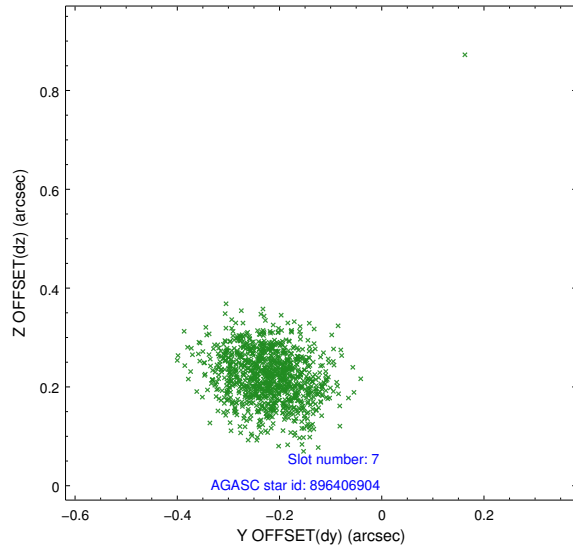
2.4.4 Slot 6



Time (s)

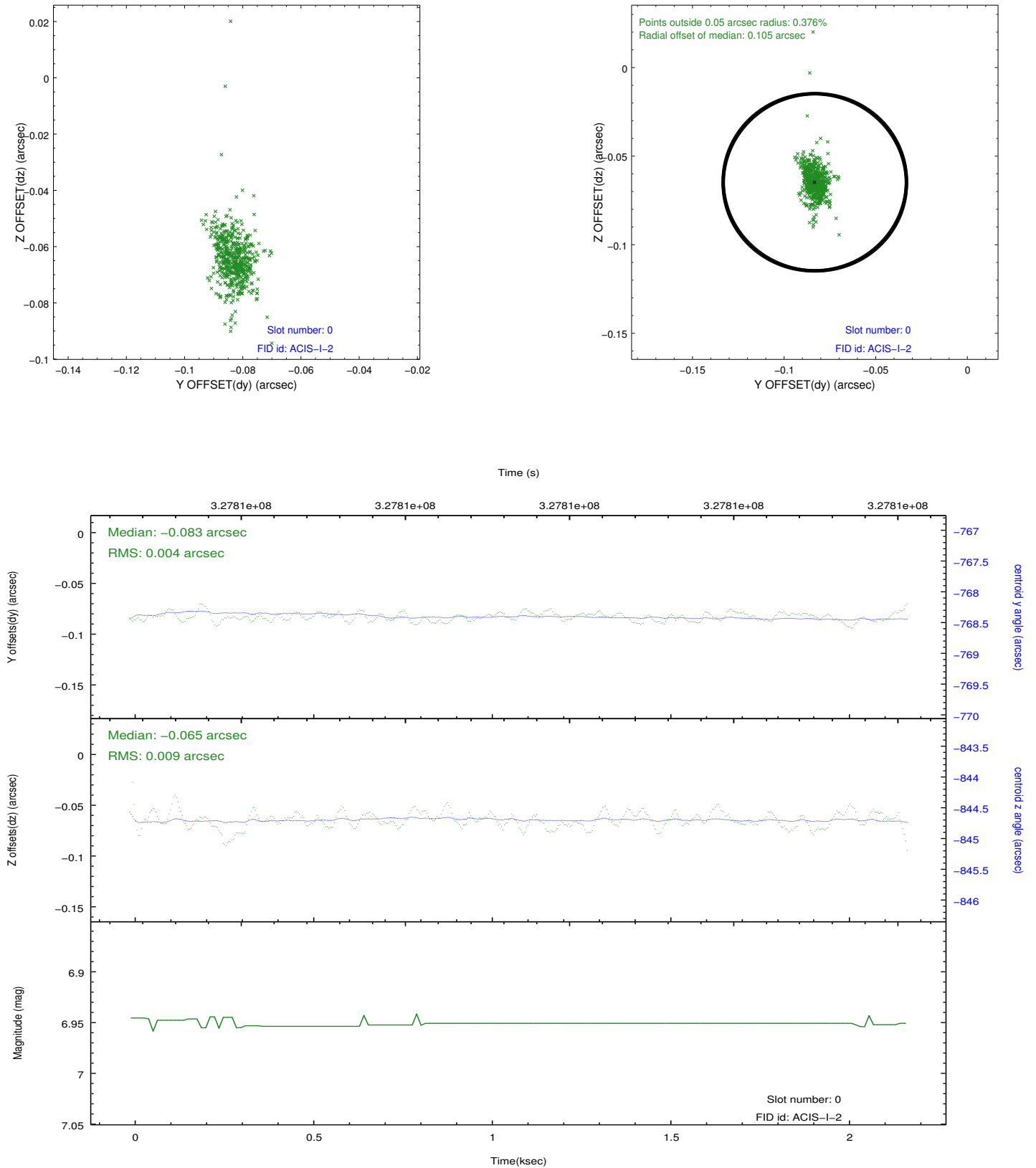


2.4.5 Slot 7

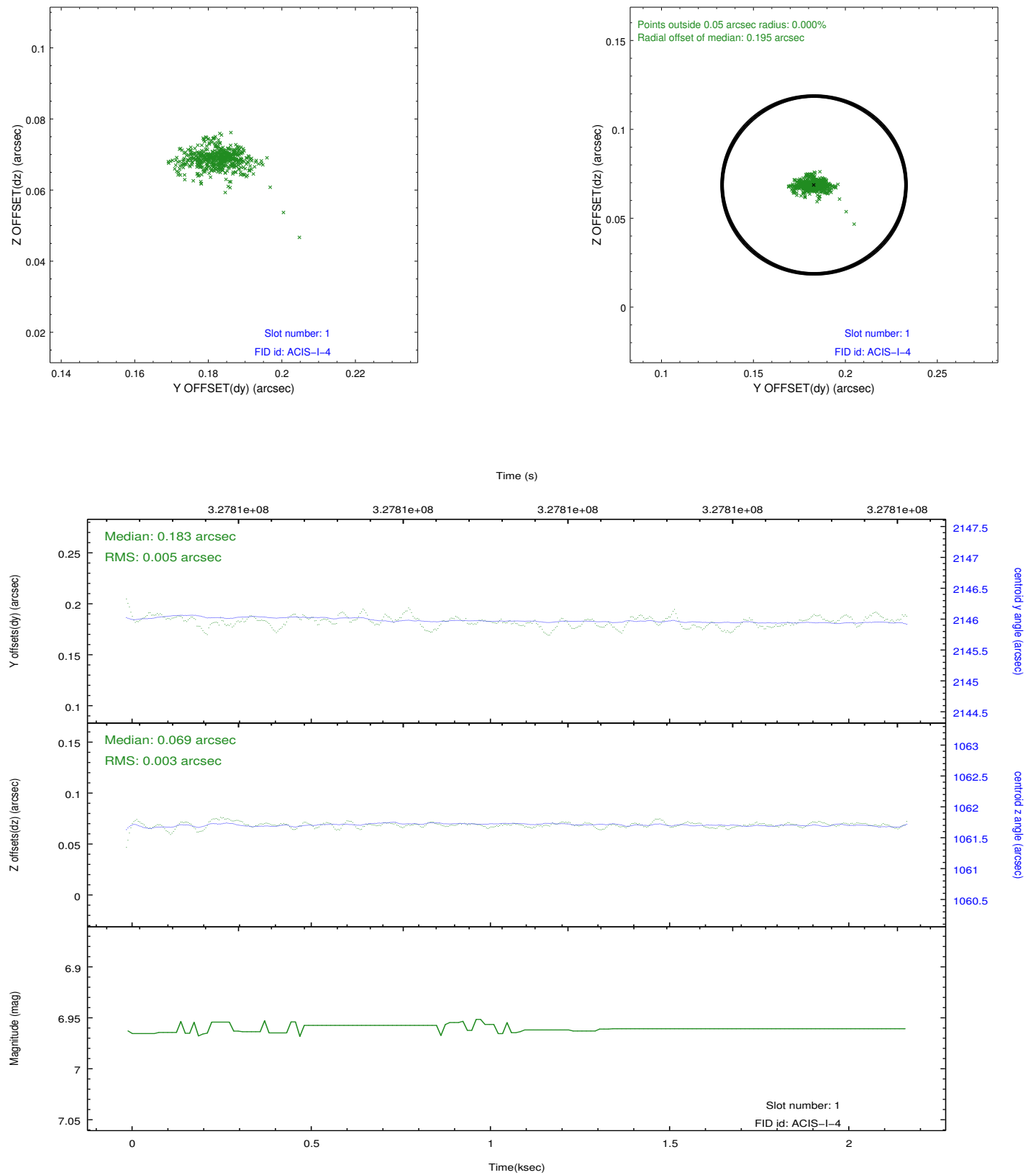


2.5 FID Slots

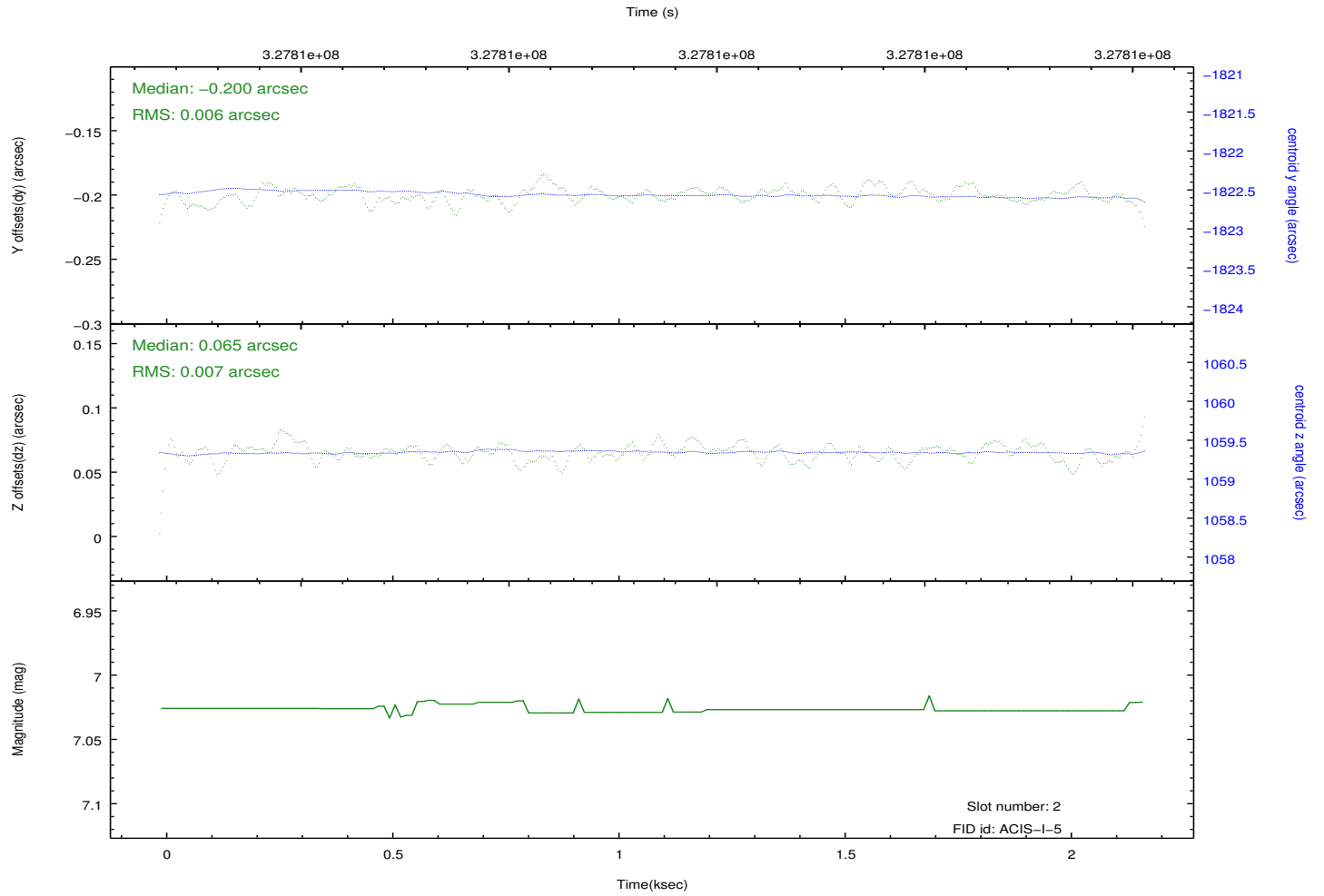
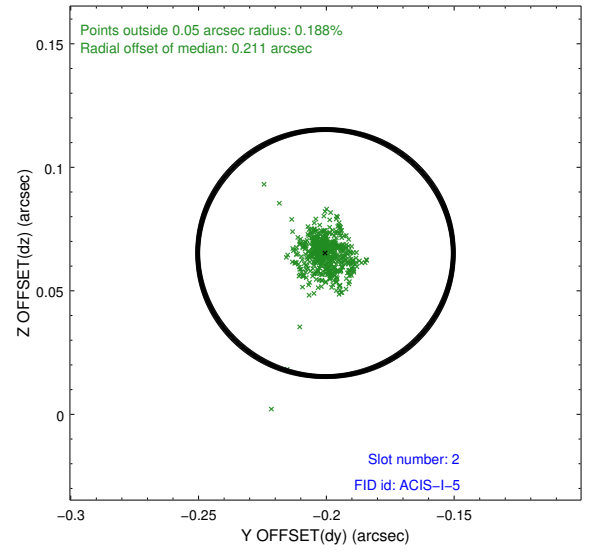
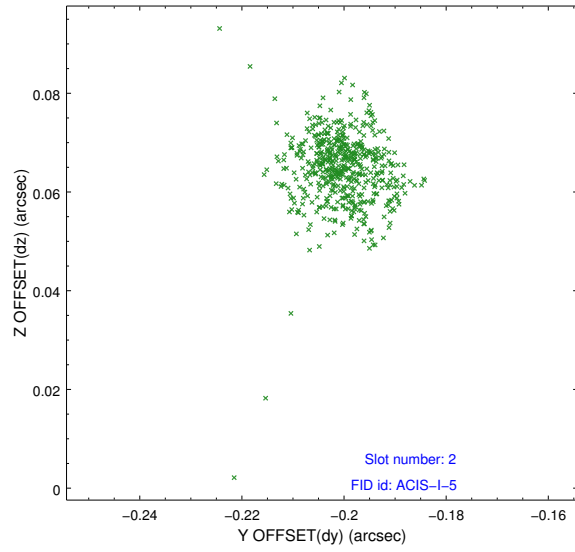
2.5.1 Slot 0



2.5.2 Slot 1



2.5.3 Slot 2



A Summary

A.1 Status

V&V Scientist	Jen Lauer
V&V Date (YYYY-MM-DD)	2012.05.21
V&V Edition	1
V&V Disposition and Status	OK
V&V Charge Time	2.17930001

A.2 Comments