

V&V Reference Report

L2 ASCDS Version : 8.4.4

Observation 8625 - L2 Version 2
Chandra X-Ray Center

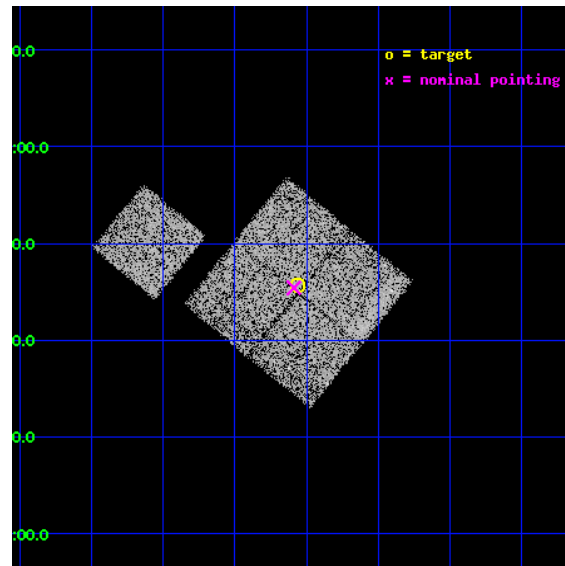
L2 Processing Date : May 5 2012

Contents

1	Front	2
2	OBI	3
2.1	OBI	3
2.1.1	Images	3
2.1.2	Bias	3
2.1.3	Parameters	4
2.1.4	Events	4
2.2	Compared Parameters	5
2.3	Aspect	6
2.4	Star Slots	9
2.4.1	Slot 3	9
2.4.2	Slot 4	10
2.4.3	Slot 5	11
2.4.4	Slot 6	12
2.4.5	Slot 7	13
2.5	FID Slots	14
2.5.1	Slot 0	14
2.5.2	Slot 1	15
2.5.3	Slot 2	16
A	Summary	17
A.1	Status	17
A.2	Comments	17

1 Front

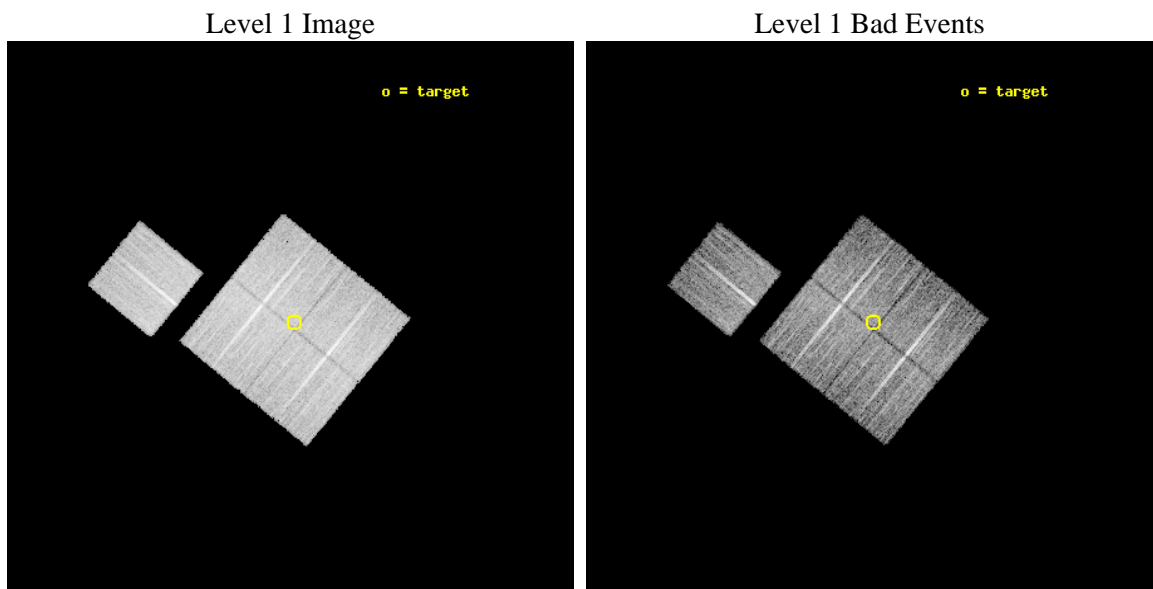
seq_num	900762	Sequence number
obs_id	8625	Observation id
title	Chandra Observations of the DEEP2 Fields	Proposal title
observer	Dr. Stephen Murray	Principal investigator
object	DEEP2 Field 4	Source name
dtcycle	0	
cycle	P	events from which exps? Prim/Second/Both
ra_targ	37.890379	Observer's specified target RA [deg]
dec_targ	0.761292	Observer's specified target Dec [deg]
ra_nom	37.897157089977	Nominal RA [deg]
dec_nom	0.7568159589709	Nominal Dec [deg]
roll_nom	309.23860571396	Nominal Roll [deg]
revision	2	Processing version of data
ontime	8778.6169010997	Sum of GTIs [s]
livetime	8663.9178085631	Livetime [s]
ontime0	8778.4937711954	Sum of GTIs [s]
ontime1	8778.5348210931	Sum of GTIs [s]
ontime2	8778.575851202	Sum of GTIs [s]
ontime3	8778.6169010997	Sum of GTIs [s]
ontime6	8778.4527410865	Sum of GTIs [s]
l2events	30099	Number of level 2 events



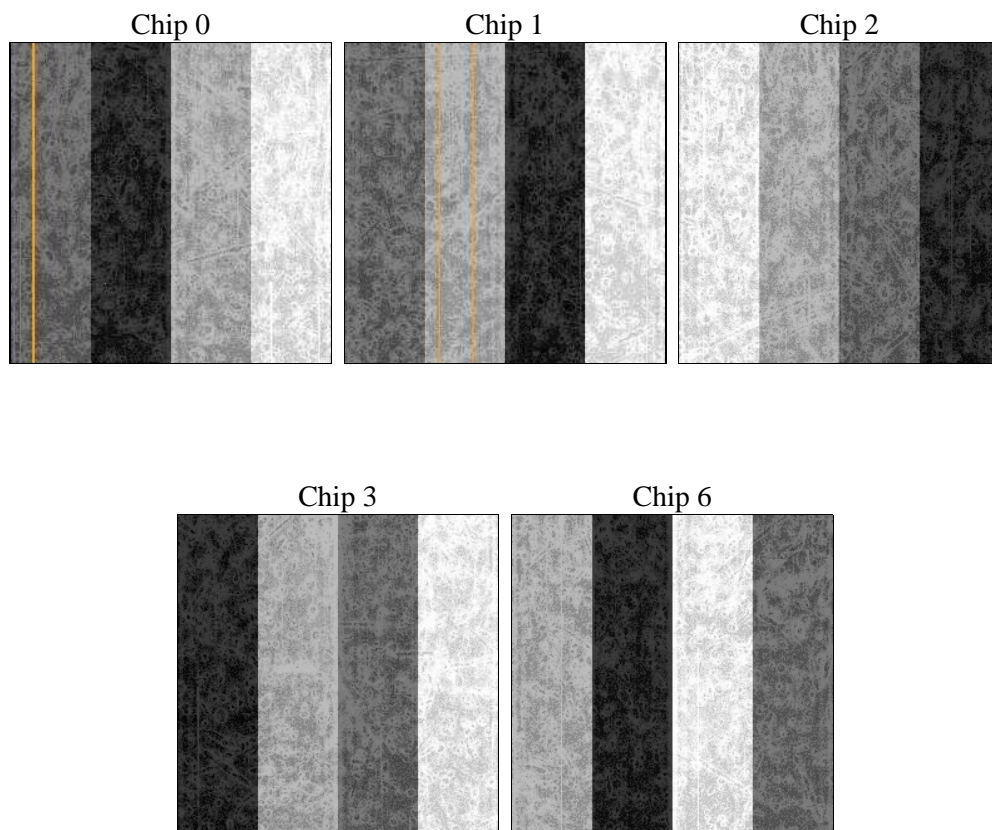
2 OBI

2.1 OBI

2.1.1 Images



2.1.2 Bias



2.1.3 Parameters

obi_num	0	Obi number	sched_exp_time	9000.000000	[s] Scheduled observation exposure time
ascdsver	8.4.4	Processing system revision	ontime	8778.6169010997	Sum of GTIs [s]
caldsver	4.4.9	 	ontime0	8778.4937711954	Sum of GTIs [s]
date	2012-05-05T06:53:42	Date and time of file creation	ontime1	8778.5348210931	Sum of GTIs [s]
revision	2	Processing version of data	ontime2	8778.575851202	Sum of GTIs [s]
			ontime3	8778.6169010997	Sum of GTIs [s]
			ontime6	8778.4527410865	Sum of GTIs [s]
			l1events	354052	Number of level 1 events

2.1.4 Events

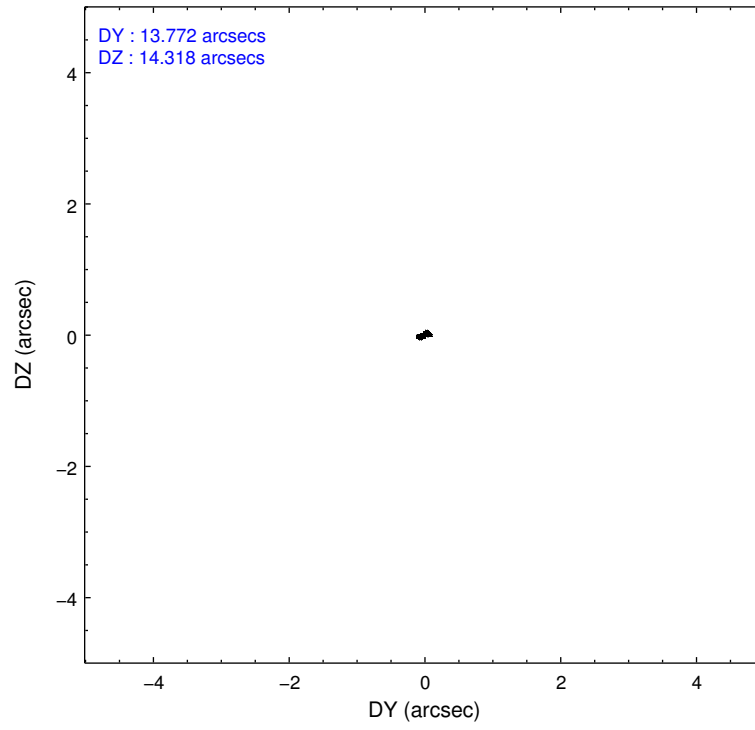
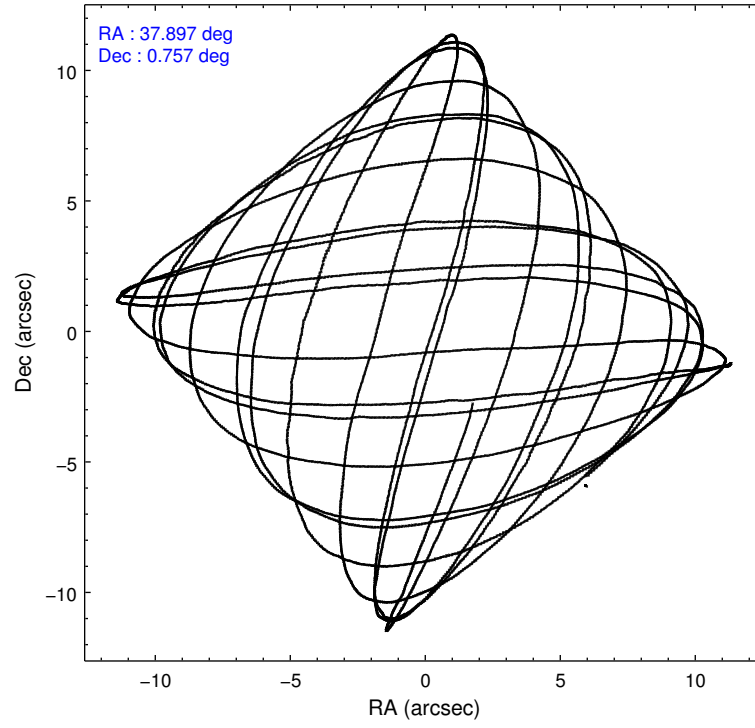
	ccd 0	ccd 1	ccd 2	ccd 3	ccd 6
level 1 events	67805	67818	78042	69341	71046
rejected events	60724	59856	71006	62582	63790
rejected %	89%	88%	90%	90%	89%

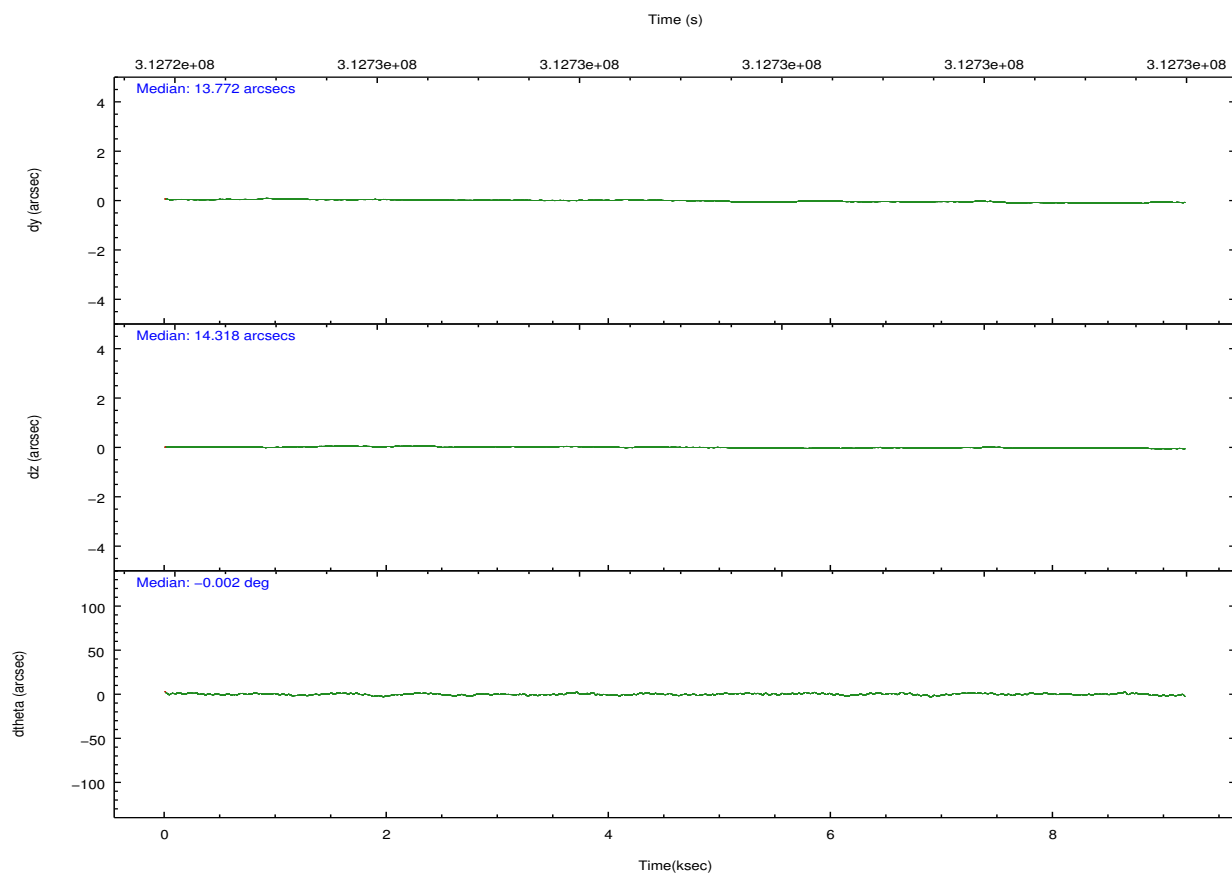
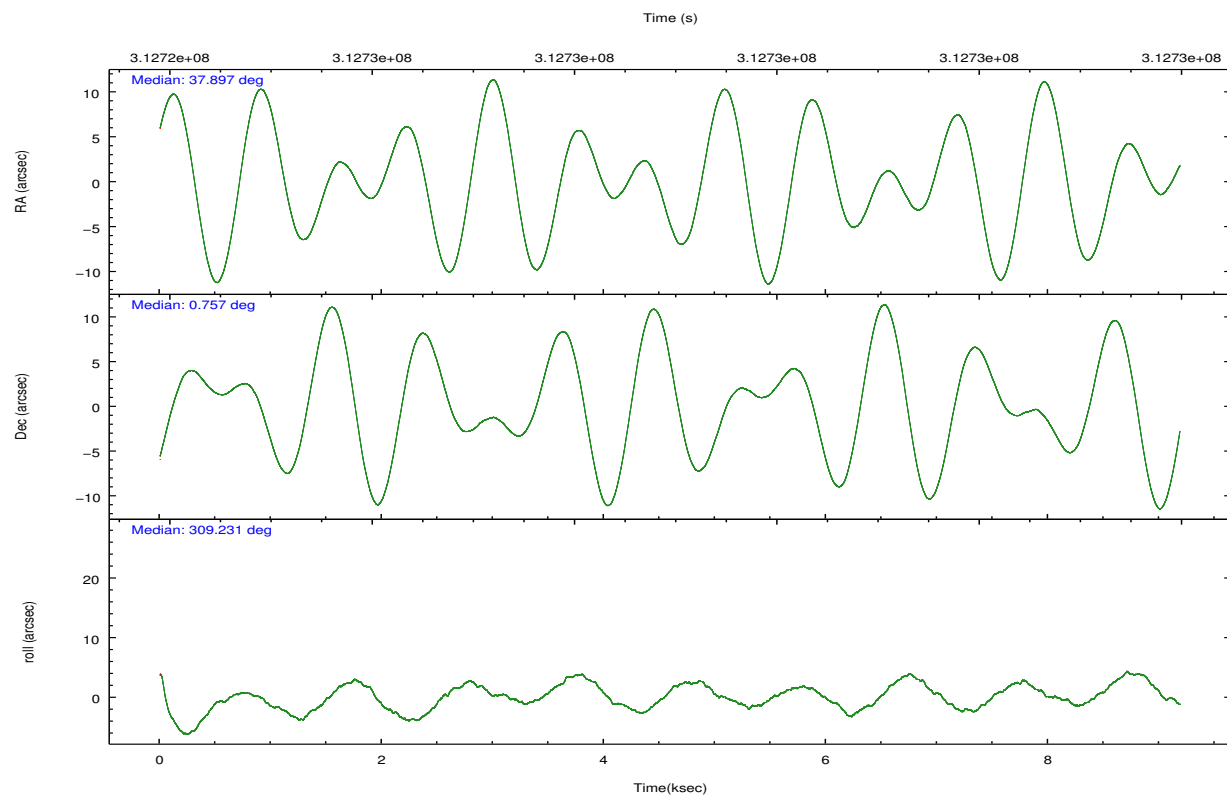
	ccd 0	ccd 1	ccd 2	ccd 3	ccd 6
grade 0 events	2468	2824	2483	2403	2548
	3%	4%	3%	3%	3%
grade 1 events	30	30	37	30	46
	0%	0%	0%	0%	0%
grade 2 events	1718	1803	1771	1509	1576
	2%	2%	2%	2%	2%
grade 3 events	781	890	773	796	801
	1%	1%	0%	1%	1%
grade 4 events	745	839	732	746	741
	1%	1%	0%	1%	1%
grade 5 events	2561	2763	2386	2862	2778
	3%	4%	3%	4%	3%
grade 6 events	1370	1608	1281	1307	1591
	2%	2%	1%	1%	2%
grade 7 events	58132	57061	68579	59688	60965
	85%	84%	87%	86%	85%

2.2 Compared Parameters

Parameter	Planned	Actual	Parameter	Planned	Actual
Instrument	ACIS	ACIS	Obspar format version number	7	7
Detector	ACIS-01236	ACIS-01236	Obspar file type	PREDICTED	ACTUAL
Grating	NONE	NONE	Obspar update status	NONE	UPDATED
Data mode	VFAINT	VFAINT	CCD I0 on	Y	Y
Observation mode	POINTING	POINTING	CCD I1 on	Y	Y
[deg] Pointing RA	37.871373	37.89715708997659	CCD I2 on	Y	Y
[deg] Pointing Dec	0.766479	0.7568159589709047	CCD I3 on	Y	Y
[deg] Pointing Roll	309.030261	309.2386057139638	CCD S0 on	N	N
[mm] SIM focus pos	-0.782348	-0.7809083437167272	CCD S1 on	N	N
[mm] SIM defocus	0	0.001439871863259334	CCD S2 on	O1	Y
[mm] SIM translation stage pos	-233.592463	-233.5874344608287	CCD S3 on	N	N
[mm] SIM translation stage offset	0	-0.005018542100998502	CCD S4 on	N	N
[s] Observation start time (MET)	312724545.184000	312724168.77956	CCD S5 on	N	N
Observation start date	2007-11-29T11:54:40	2007-11-29T11:49:28	Number of optional ACIS chips dropped	0	0
[s] Observation end time (MET)	312733545.184000	312734453.11756	On-chip summing requested	N	N
Observation end date	2007-11-29T14:24:40	2007-11-29T14:40:53	Subarray requested	NONE	NONE
Read mode	TIMED	TIMED	Alternating exposures requested	N	N
			[s] Primary exposure time	0.000000	3.1

2.3 Aspect



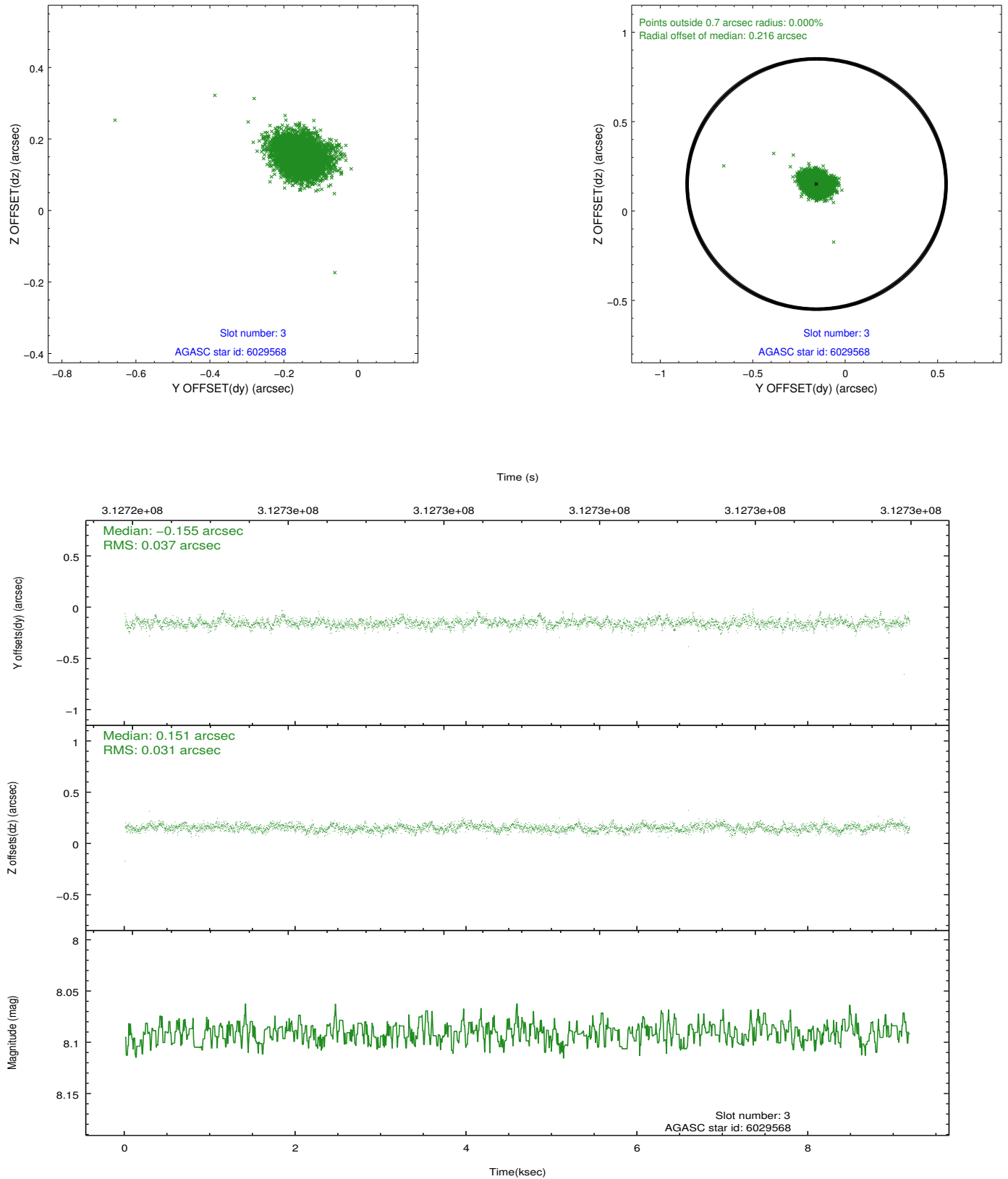


Slot Statistics

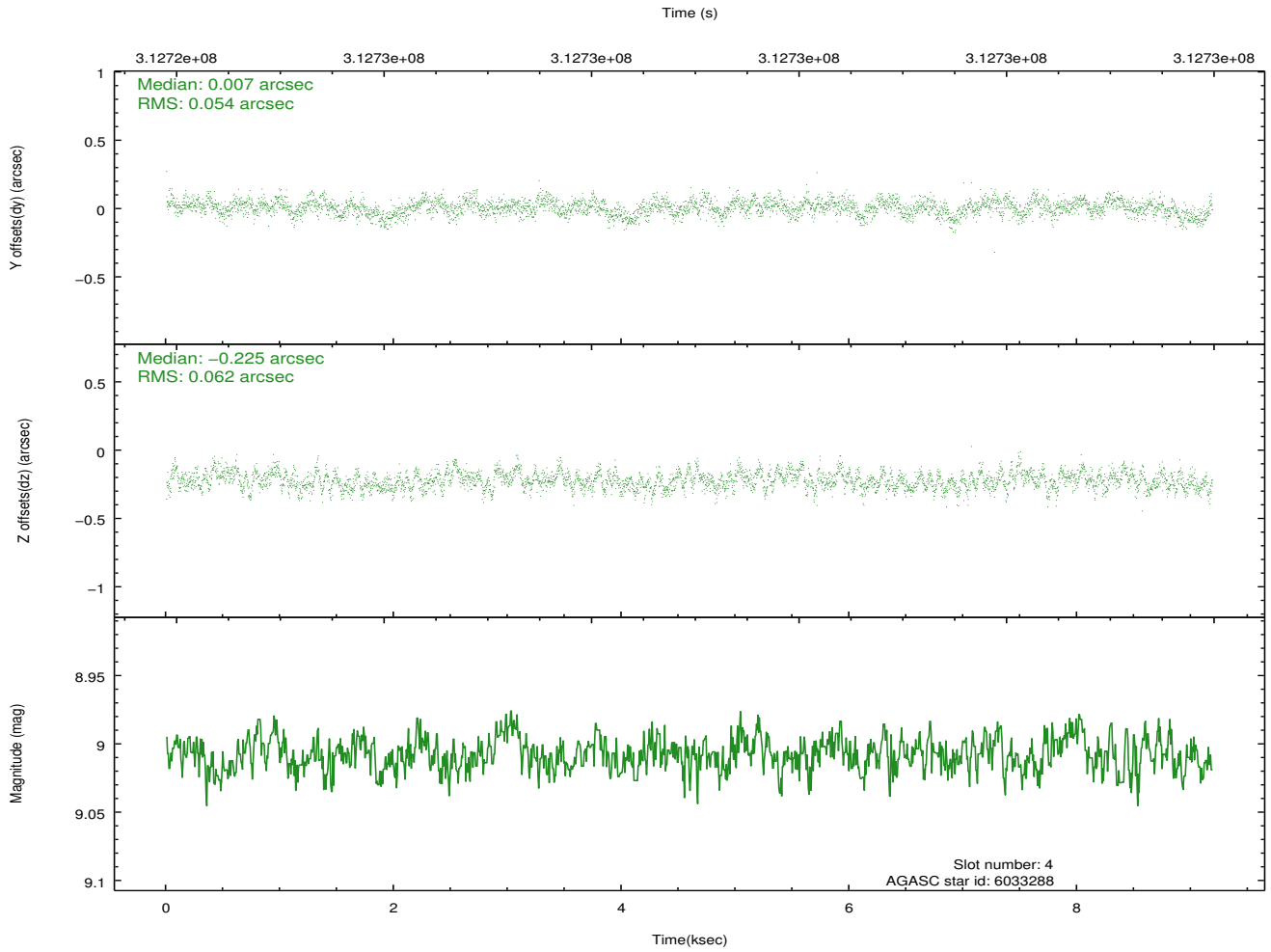
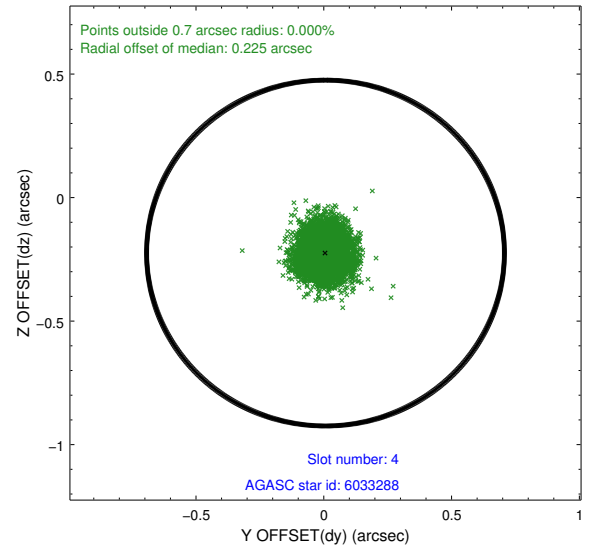
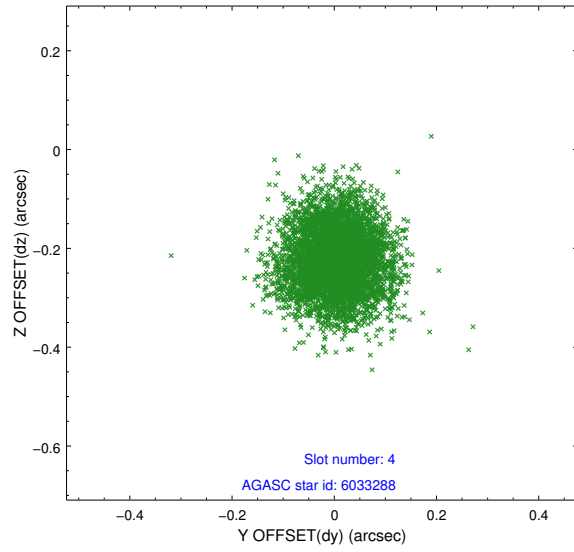
slot	status	id	mag	n_pts	med_dy	med_dz	dr1	dr2	ra	dec	mean_y	mean_z
0	FID	ACIS-I-1	7.23	2241	-0.014	0.021	0.013	0.022	0.000000	0.000000	925.72	-837.87
1	FID	ACIS-I-4	7.15	2240	0.195	0.016	0.014	0.021	0.000000	0.000000	2146.30	1061.63
2	FID	ACIS-I-5	7.22	2240	-0.278	0.034	0.009	0.017	0.000000	0.000000	-1821.78	1060.16
3	GUIDE	6029568	8.09	4480	-0.155	0.151	0.049	0.083	37.819248	1.515561	-2213.19	1552.64
4	GUIDE	6033288	9.01	4480	0.007	-0.225	0.088	0.138	37.919400	0.743225	173.43	81.93
5	GUIDE	6033648	9.53	4476	0.078	0.063	0.091	0.147	38.688096	0.722742	1973.56	2185.50
6	GUIDE	6042384	6.40	4481	0.008	-0.001	0.059	0.100	37.688348	0.255749	1014.28	-1669.38
7	GUIDE	6032088	9.11	4478	0.062	0.017	0.094	0.151	37.532714	0.102881	1088.96	-2451.47

2.4 Star Slots

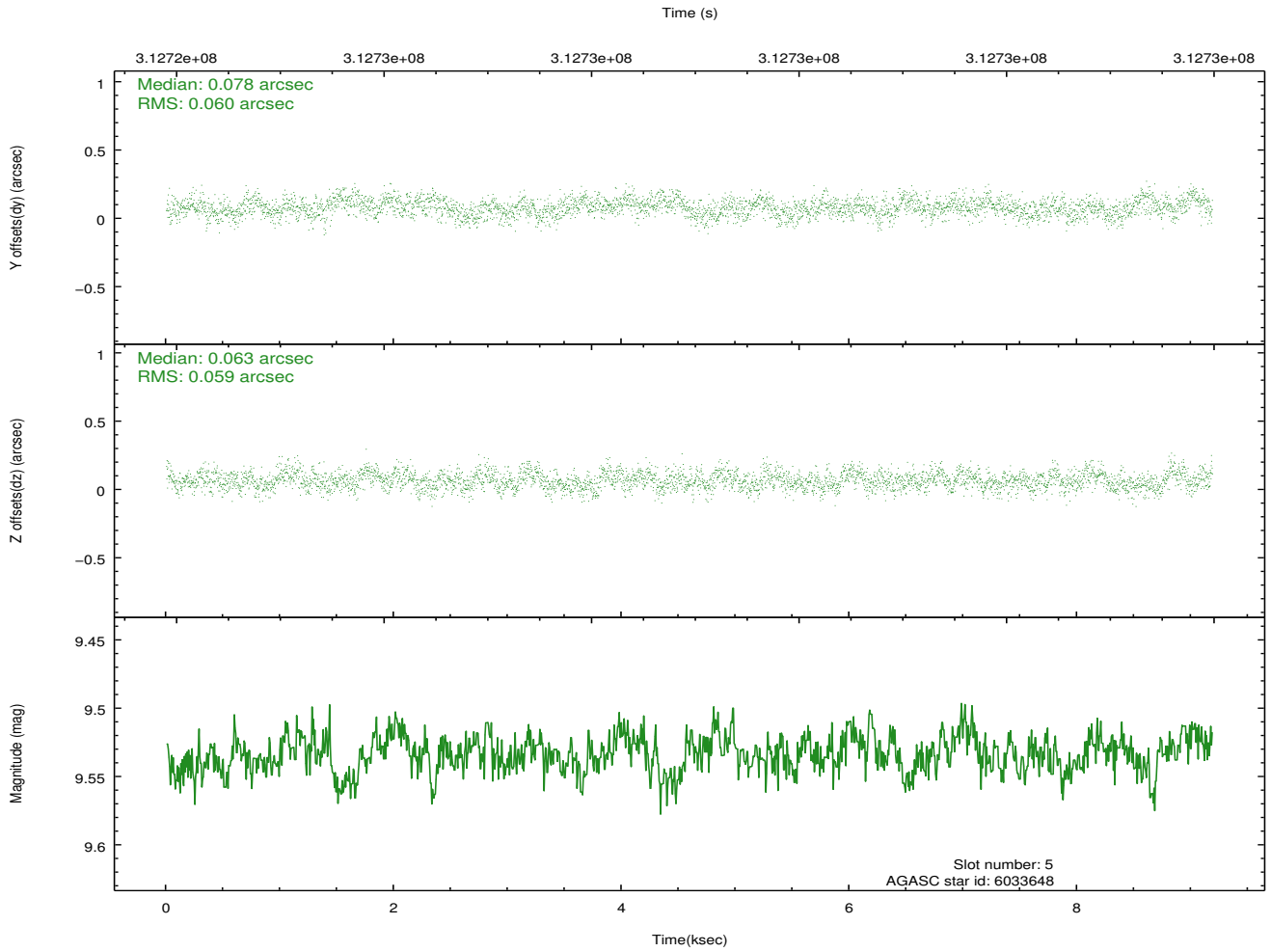
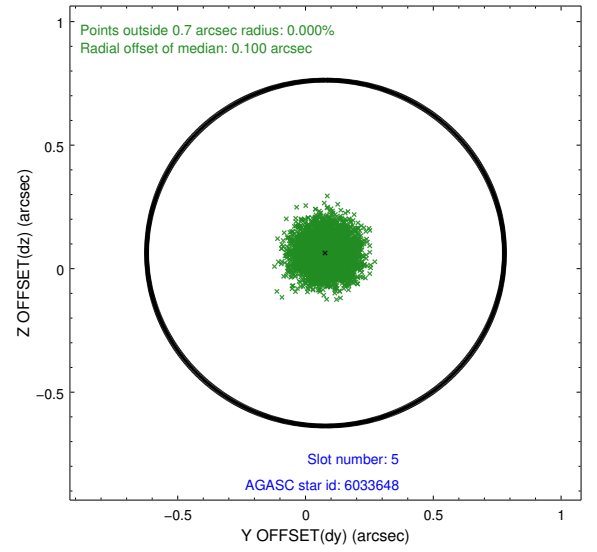
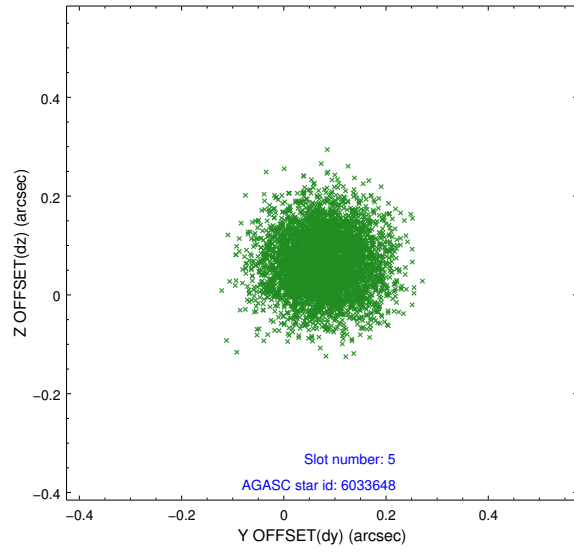
2.4.1 Slot 3



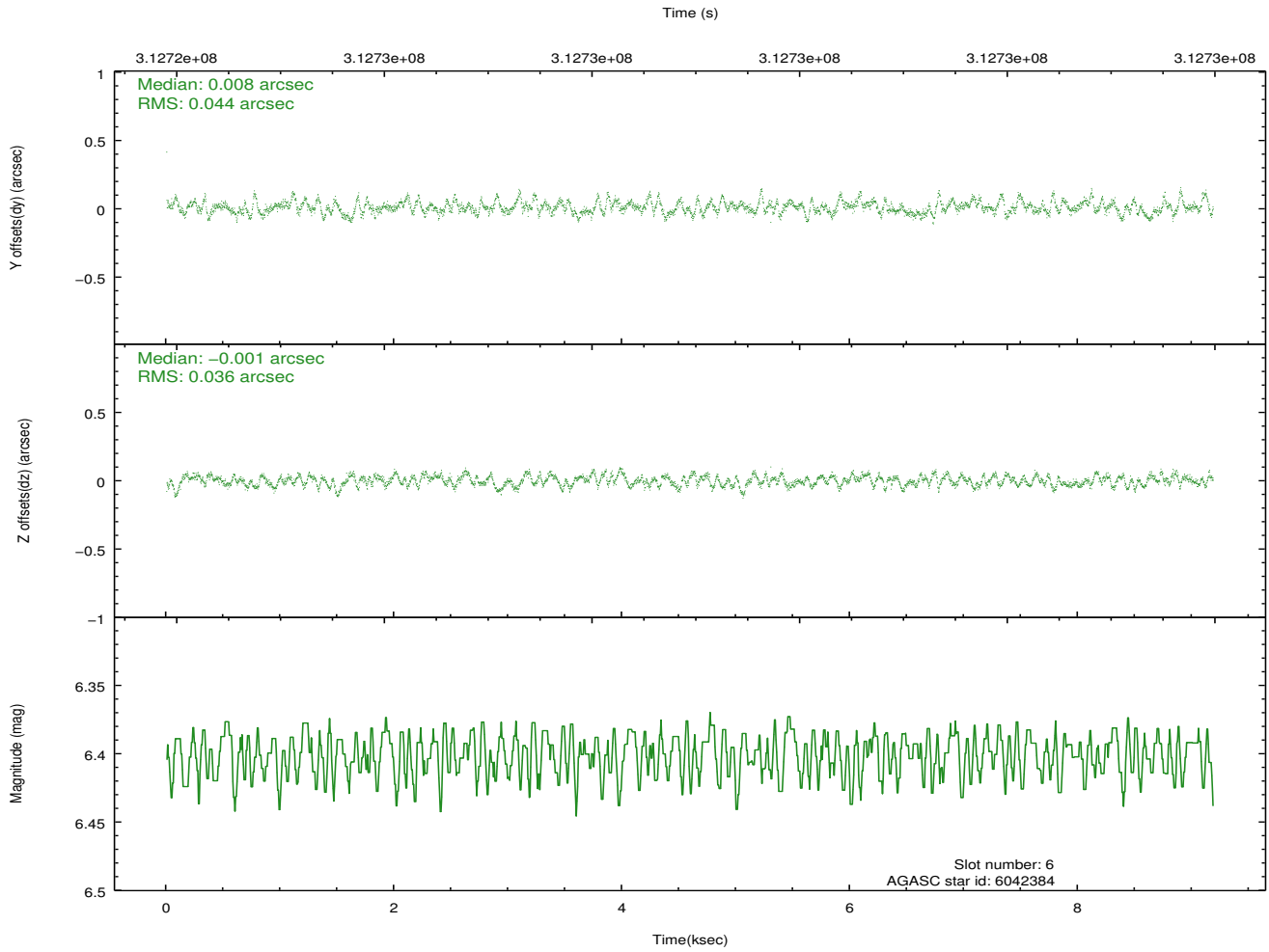
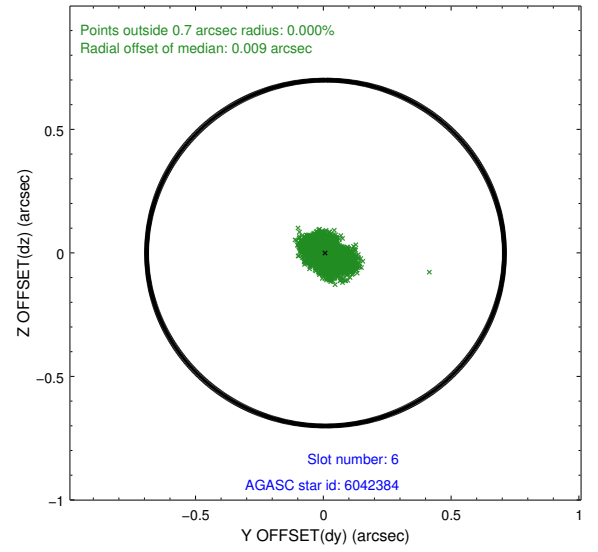
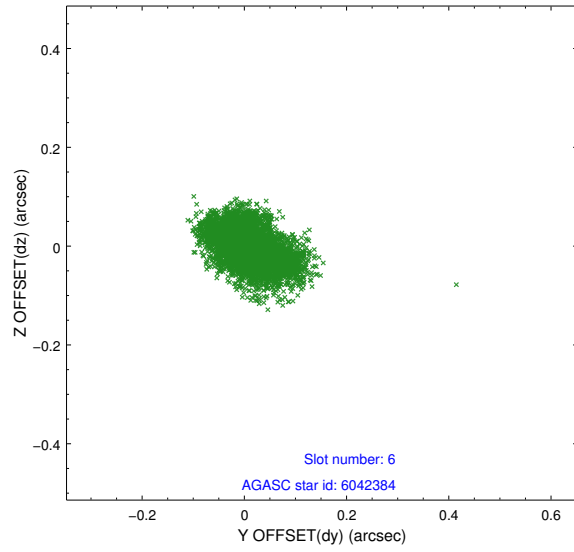
2.4.2 Slot 4



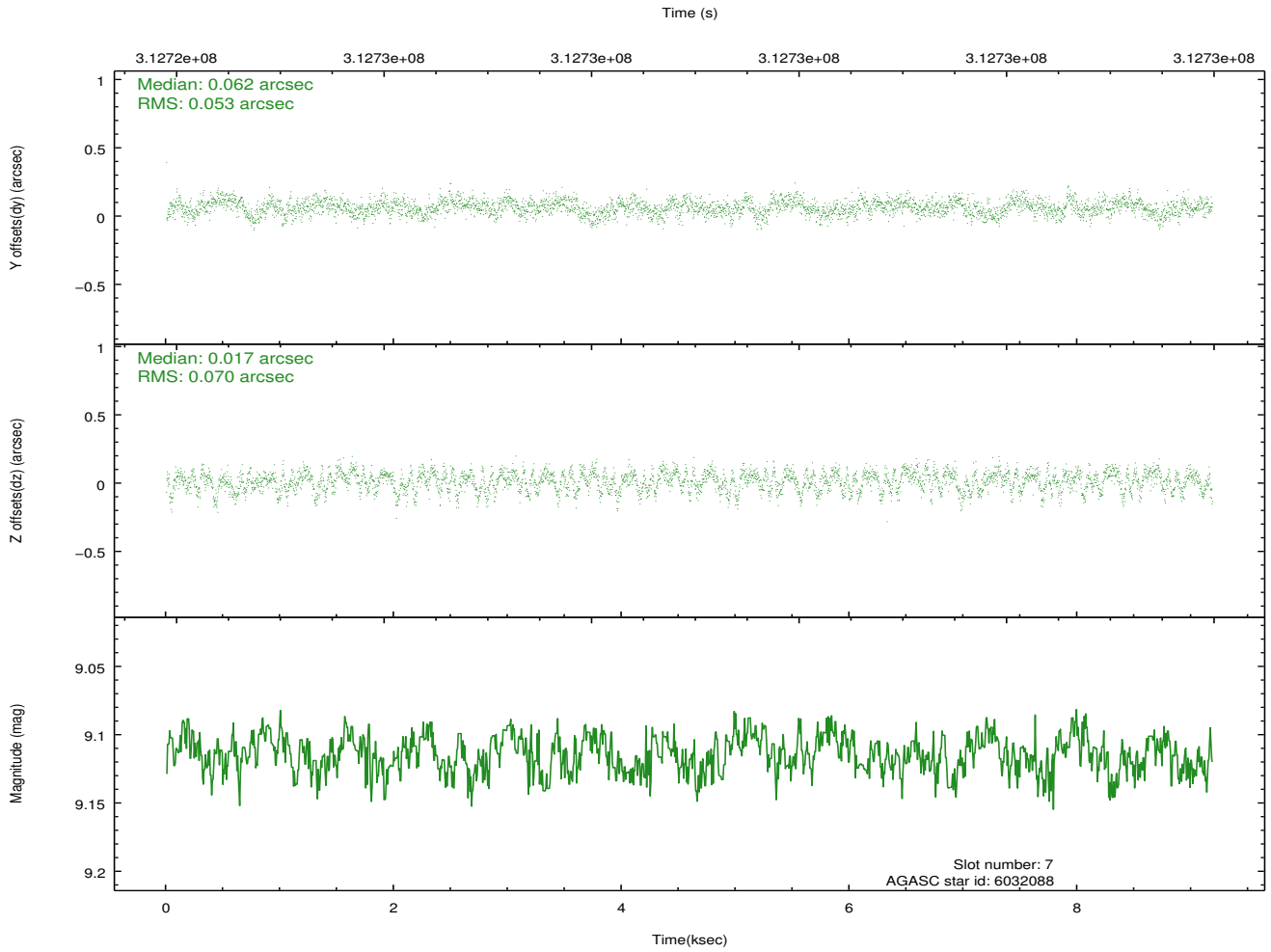
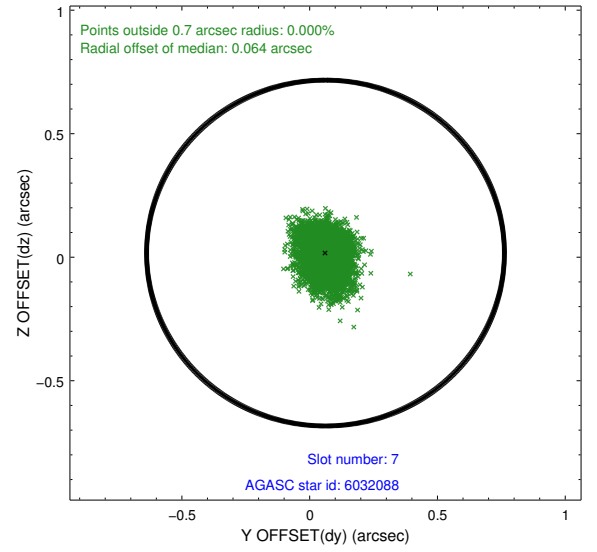
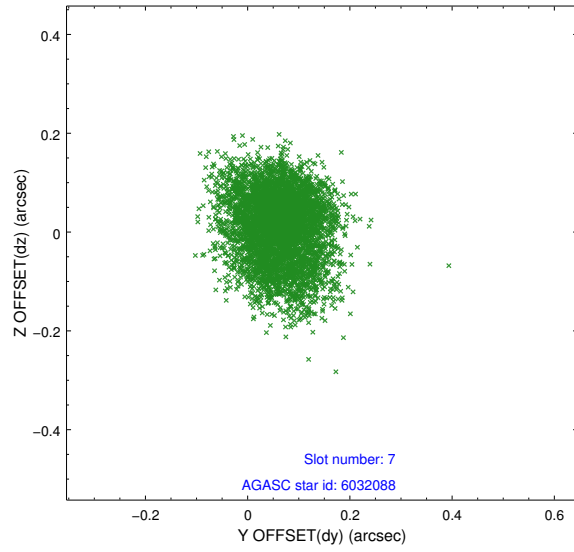
2.4.3 Slot 5



2.4.4 Slot 6

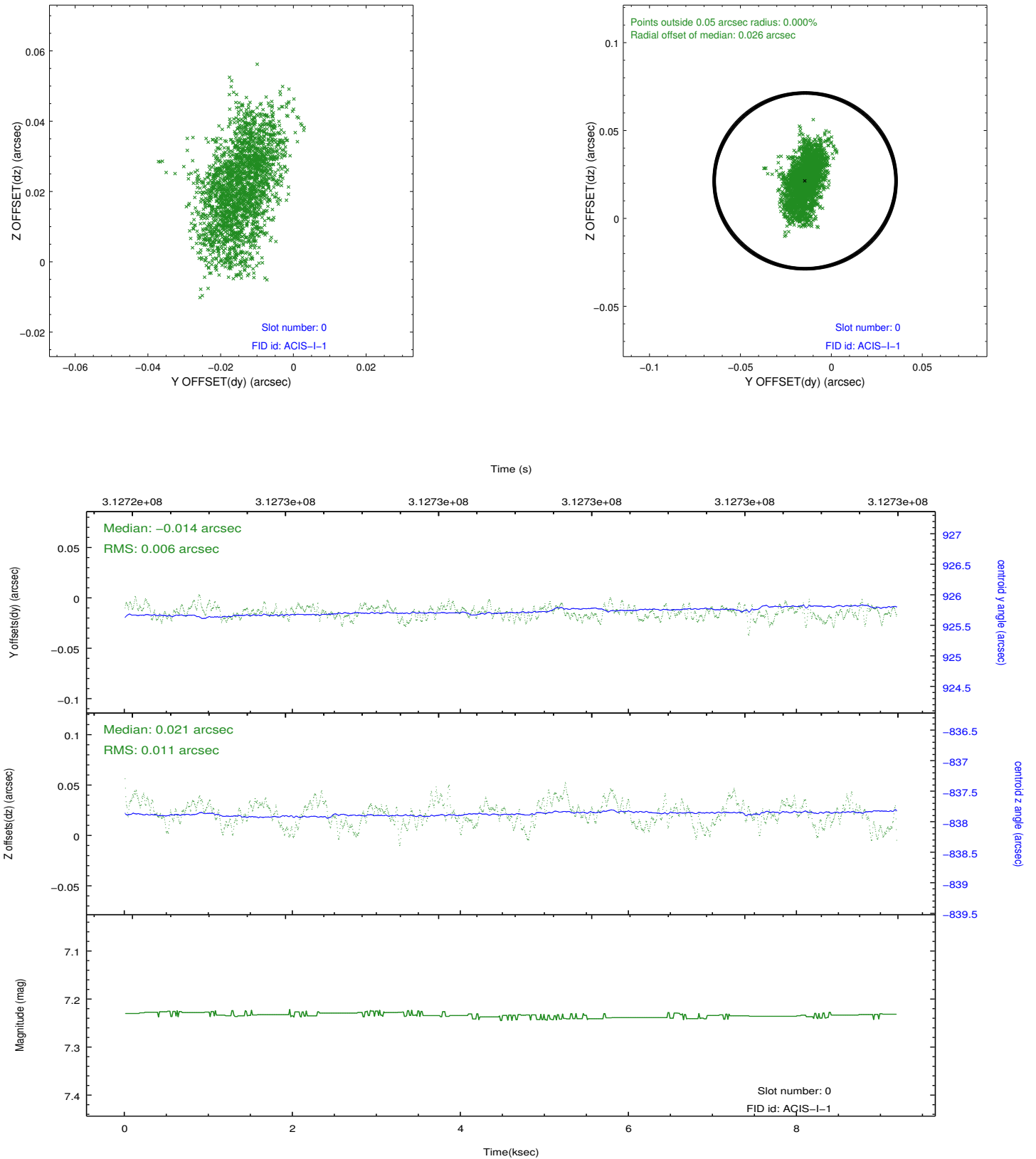


2.4.5 Slot 7

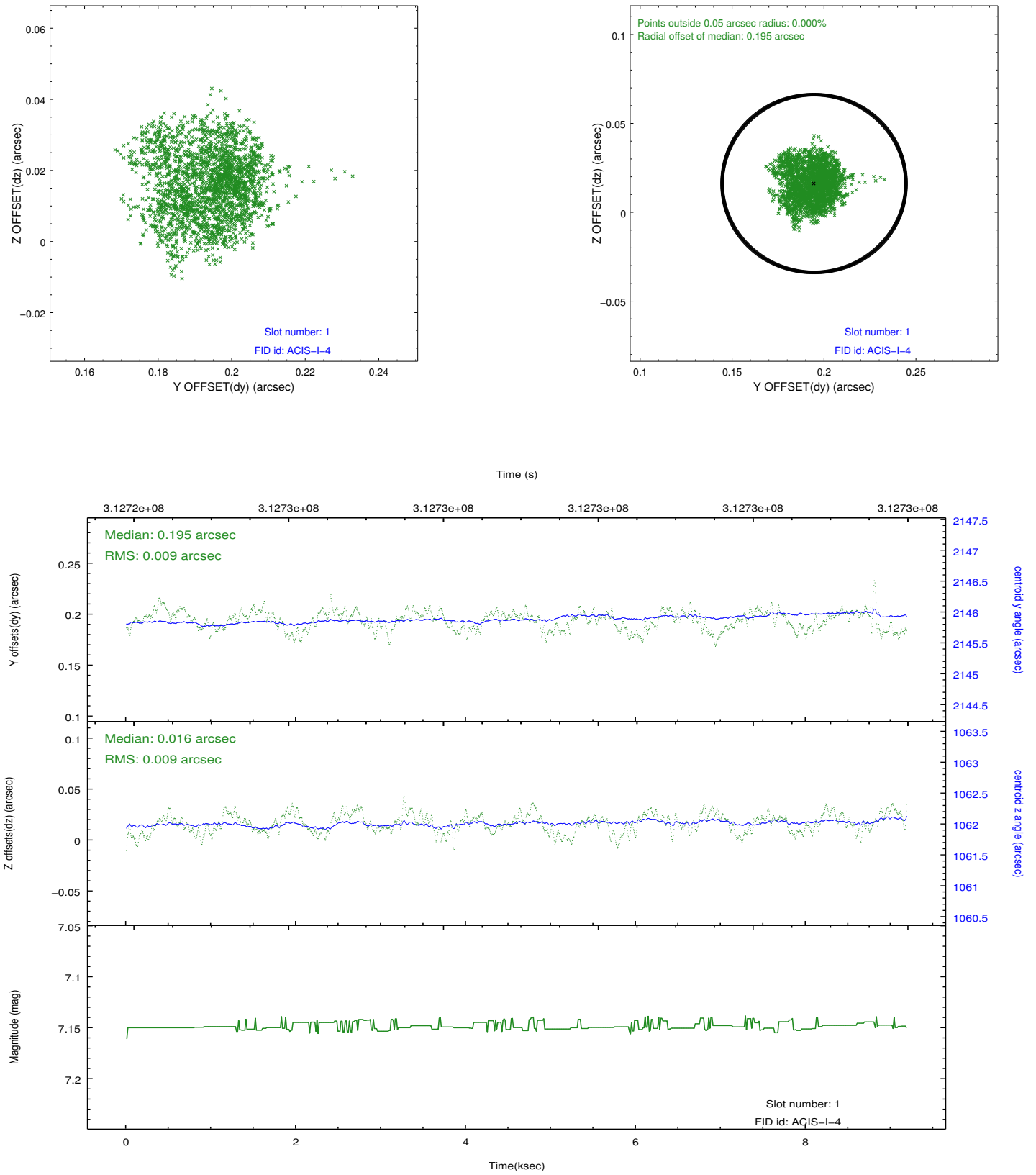


2.5 FID Slots

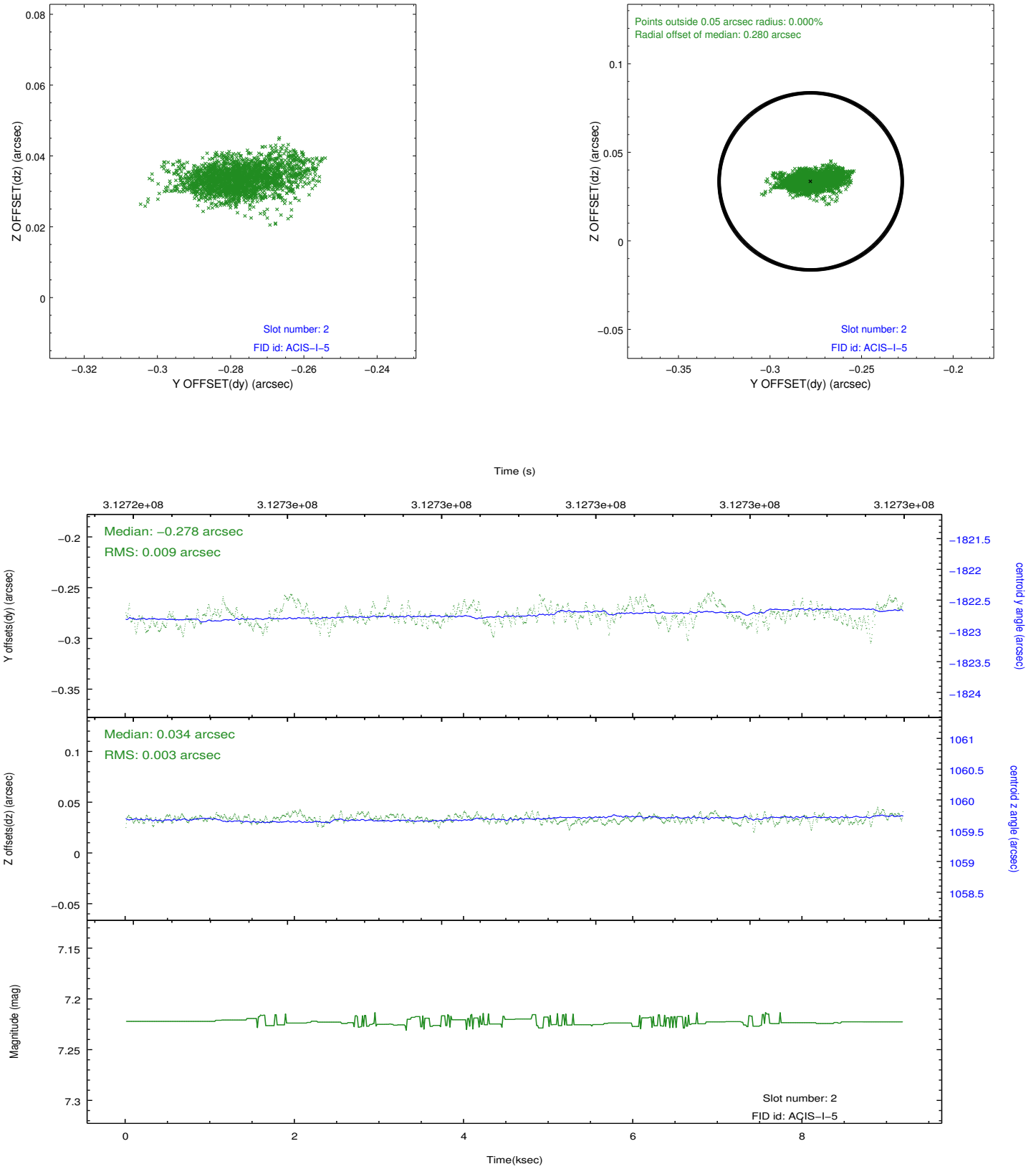
2.5.1 Slot 0



2.5.2 Slot 1



2.5.3 Slot 2



A Summary

A.1 Status

V&V Scientist	Jen Lauer
V&V Date (YYYY-MM-DD)	2012.05.07
V&V Edition	1
V&V Disposition and Status	OK
V&V Charge Time	8.77920006

A.2 Comments