

V&V Reference Report

L2 ASCDS Version : 8.4.3.1

Observation 8455 - L2 Version 2
Chandra X-Ray Center

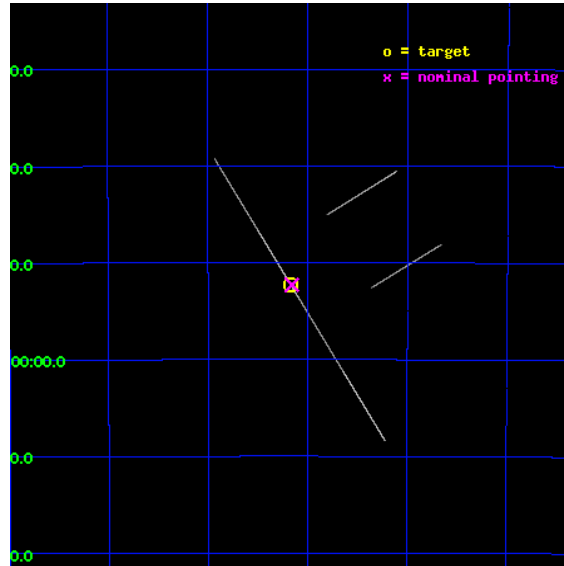
L2 Processing Date : Apr 12 2012

Contents

1	Front	2
2	OBI	3
2.1	OBI	3
2.1.1	Images	3
2.1.2	Bias	3
2.1.3	Parameters	4
2.1.4	Events	4
2.2	Compared Parameters	5
2.3	Aspect	6
2.4	Star Slots	9
2.4.1	Slot 3	9
2.4.2	Slot 4	10
2.4.3	Slot 5	11
2.4.4	Slot 6	12
2.4.5	Slot 7	13
2.5	FID Slots	14
2.5.1	Slot 0	14
2.5.2	Slot 1	15
2.5.3	Slot 2	16
A	Summary	17
A.1	Status	17
A.2	Comments	17

1 Front

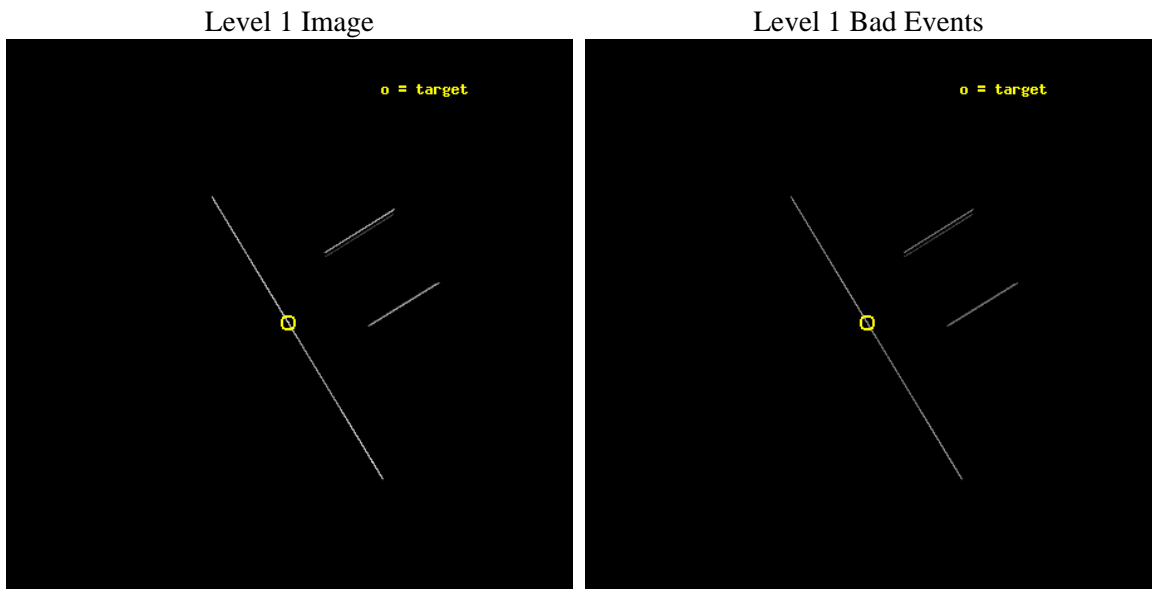
seq_num	500814	Sequence number
obs_id	8455	Observation id
title	Monitoring a Recovering AXP and Measuring Pdot	Proposal title
observer	Professor Victoria Kaspi	Principal investigator
object	CXO J164710.2-455216.9	Source name
ra_targ	251.7925	Observer's specified target RA [deg]
dec_targ	-45.871361	Observer's specified target Dec [deg]
ra_nom	251.78953561339	Nominal RA [deg]
dec_nom	-45.871595858439	Nominal Dec [deg]
roll_nom	238.48368693084	Nominal Roll [deg]
revision	2	Processing version of data
ontime	15186.75	Sum of GTIs [s]
livetime	15127.426757812	Livetime [s]
ontime2	15186.75	Sum of GTIs [s]
ontime3	15186.75	Sum of GTIs [s]
ontime5	15186.75	Sum of GTIs [s]
ontime6	15186.75	Sum of GTIs [s]
ontime7	15186.75	Sum of GTIs [s]
ontime8	15186.75	Sum of GTIs [s]
l2events	302272	Number of level 2 events



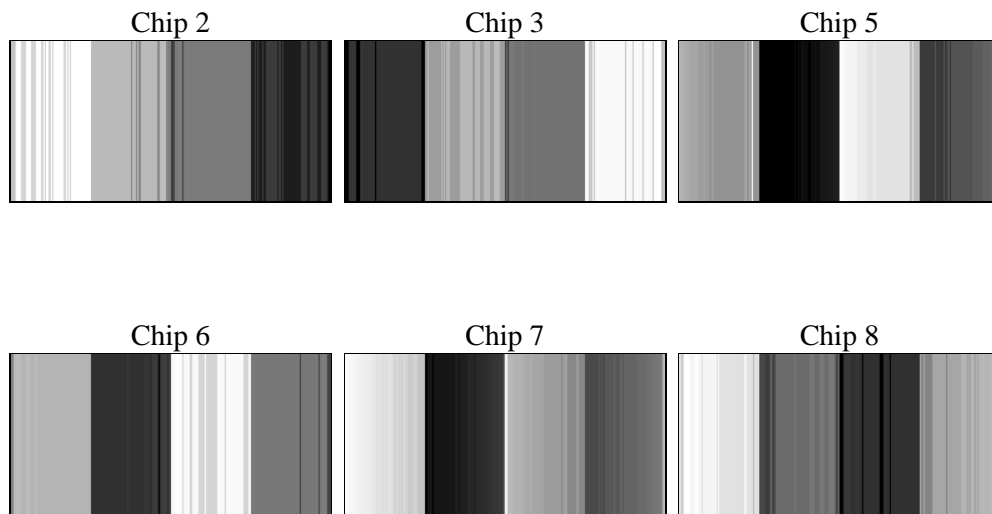
2 OBI

2.1 OBI

2.1.1 Images



2.1.2 Bias



2.1.3 Parameters

obi_num	1	Obi number	sched_exp_time	15000.000000	[s] Scheduled observation exposure time
ascdsver	8.4.3.1	Processing system revision	ontime	15186.75	Sum of GTIs [s]
caldsver	4.4.9	 	ontime2	15186.75	Sum of GTIs [s]
date	2012-04-12T08:58:43	Date and time of file creation	ontime3	15186.75	Sum of GTIs [s]
revision	2	Processing version of data	ontime5	15186.75	Sum of GTIs [s]
			ontime6	15186.75	Sum of GTIs [s]
			ontime7	15186.75	Sum of GTIs [s]
			ontime8	15186.75	Sum of GTIs [s]
			l1events	444298	Number of level 1 events

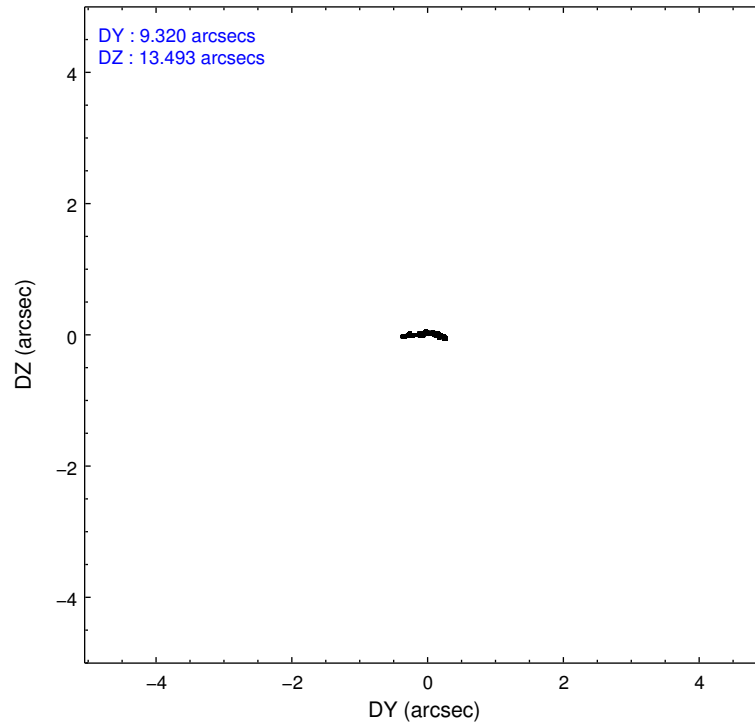
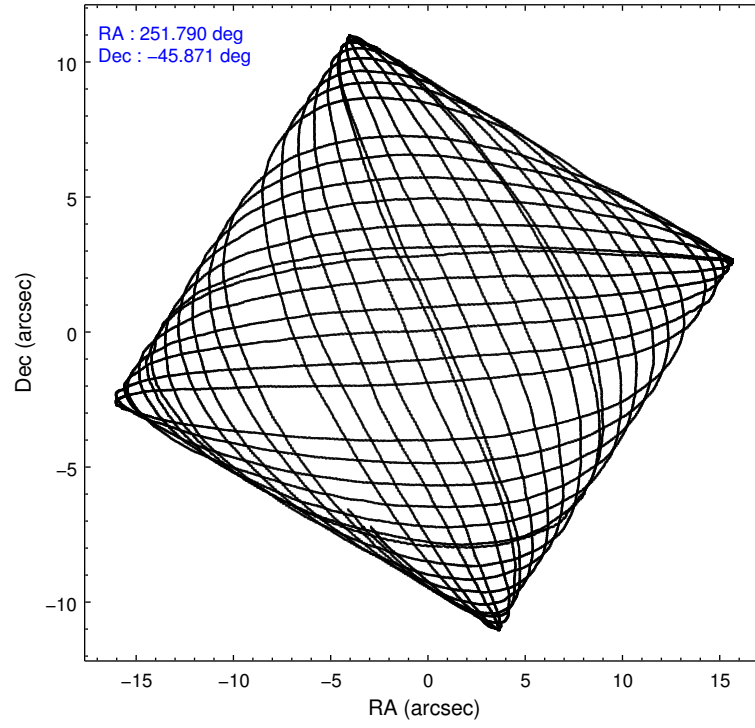
2.1.4 Events

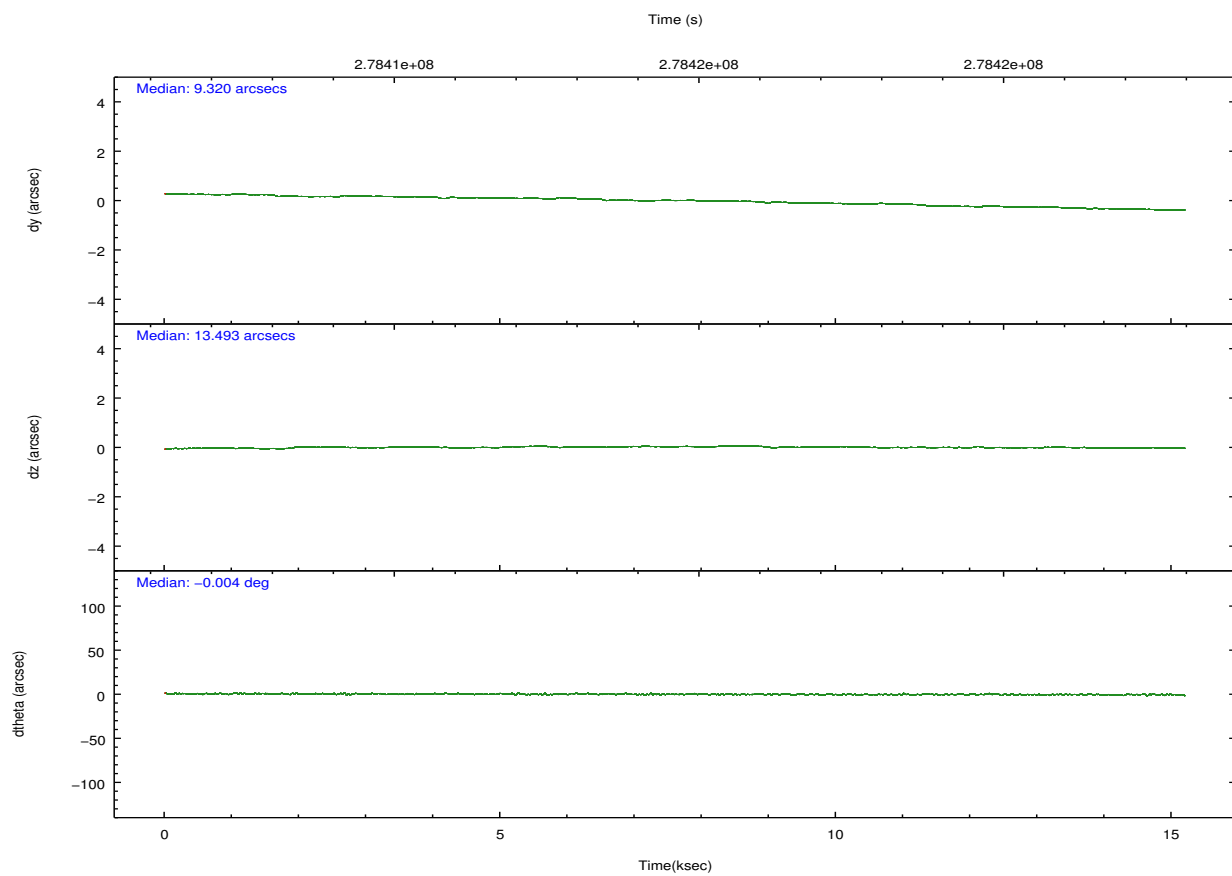
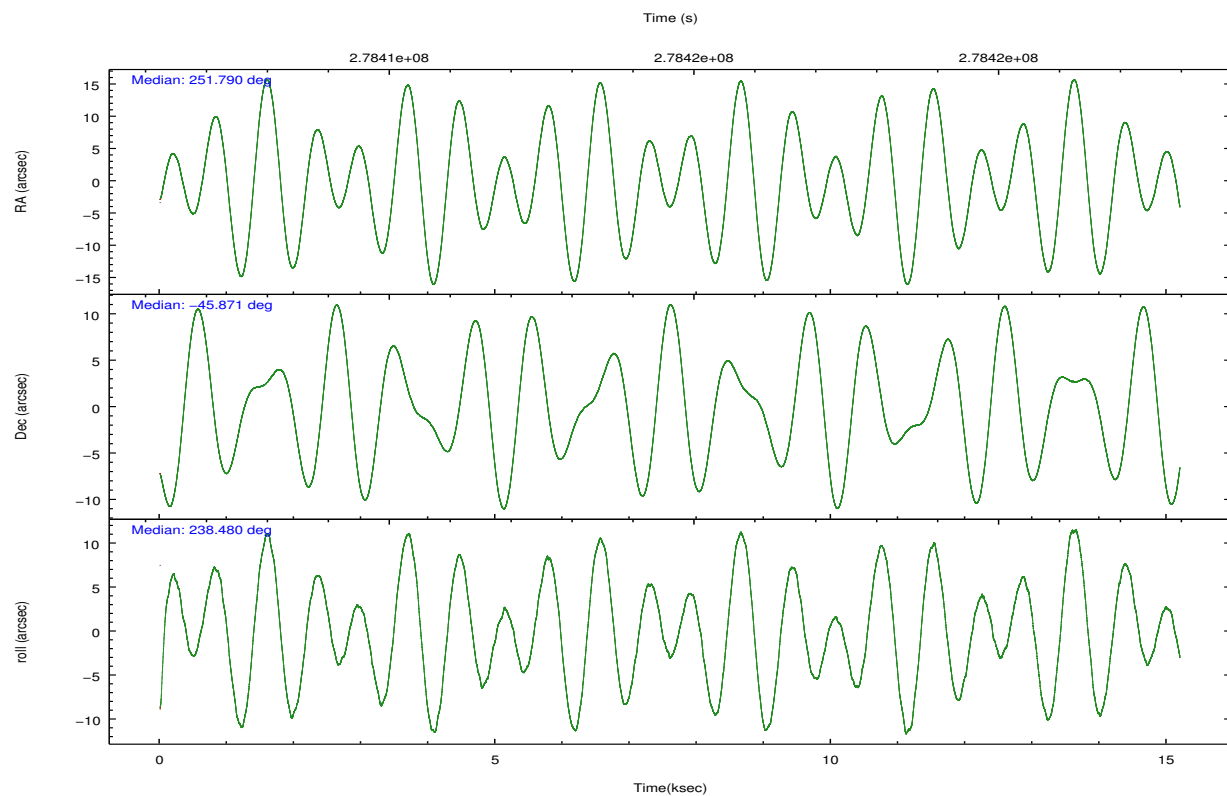
	ccd 2	ccd 3	ccd 5	ccd 6	ccd 7	ccd 8		ccd 2	ccd 3	ccd 5	ccd 6	ccd 7	ccd 8
level 1 events	34833	47641	143594	34468	117386	66376	grade 0 events	4220	6460	28630	3333	10758	11209
rejected events	6067	6831	16903	7157	17984	10463		12%	13%	19%	9%	9%	16%
rejected %	17%	14%	11%	20%	15%	15%	grade 1 events	134	147	221	123	261	239
								0%	0%	0%	0%	0%	0%
							grade 2 events	13811	21267	37805	11948	26929	18982
								39%	44%	26%	34%	22%	28%
							grade 3 events	2939	3675	2706	3317	7568	6399
								8%	7%	1%	9%	6%	9%
							grade 4 events	3172	3269	2598	3137	7207	6115
								9%	6%	1%	9%	6%	9%
							grade 5 events	5197	5823	13227	6215	15277	8703
								14%	12%	9%	18%	13%	13%
							grade 6 events	5360	7000	58407	6395	49386	14729
								15%	14%	40%	18%	42%	22%
							grade 7 events	0	0	0	0	0	0
								0%	0%	0%	0%	0%	0%

2.2 Compared Parameters

Parameter	Planned	Actual	Parameter	Planned	Actual
Instrument	ACIS	ACIS	Obspar format version number	7	7
Detector	ACIS-235678	ACIS-235678	Obspar file type	PREDICTED	ACTUAL
Grating	NONE	NONE	Obspar update status	NONE	UPDATED
Data mode	CC33_FAINT	CC33_FAINT	Number of optional ACIS chips dropped	0	0
Observation mode	POINTING	POINTING	On-chip summing requested	N	N
[deg] Pointing RA	251.790022	251.7895356133868	Subarray requested	NONE	NONE
[deg] Pointing Dec	-45.844314	-45.87159585843857	Alternating exposures requested	N	N
[deg] Pointing Roll	238.327410	238.4836869308403	[s] Primary exposure time	0.000000	0
[s] Window start time (MET)	278208065.184000	278208065.184000			
[s] Window stop time (MET)	278726465.184000	278726465.184000			
[mm] SIM focus pos	-0.684267	-0.6828225247311905			
[mm] SIM defocus	0	0.001444936568705701			
[mm] SIM translation stage pos	-190.132523	-190.1425803651734			
[mm] SIM translation stage offset	0	0.01005778216563158			
[s] Observation start time (MET)	278407216.184000	278406467.06585			
Observation start date	2006-10-28T07:19:11	2006-10-28T07:07:47			
[s] Observation end time (MET)	278422216.184000	278423111.52913			
Observation end date	2006-10-28T11:29:11	2006-10-28T11:45:11			
Read mode	CONTINUOUS	CONTINUOUS			

2.3 Aspect



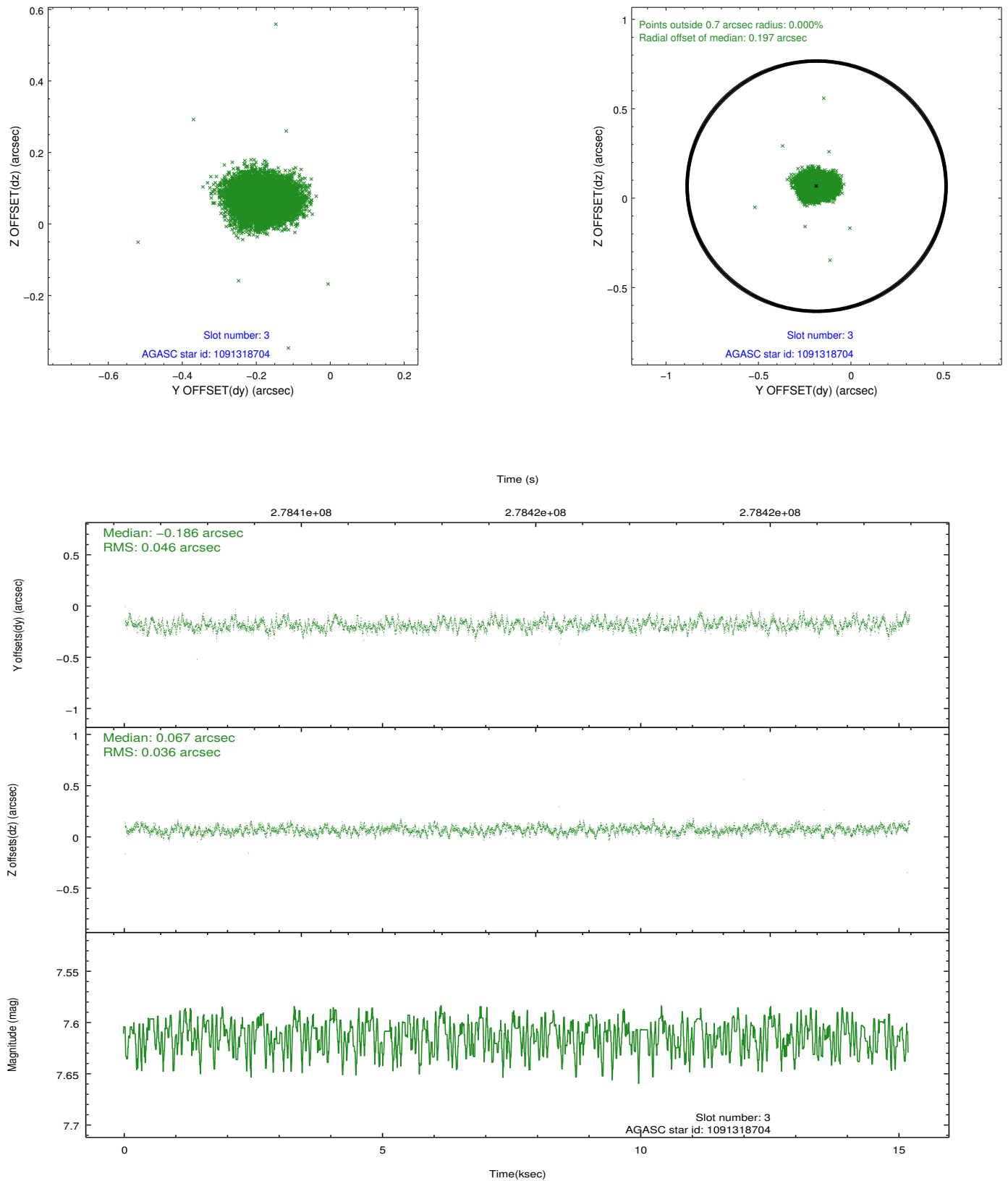


Slot Statistics

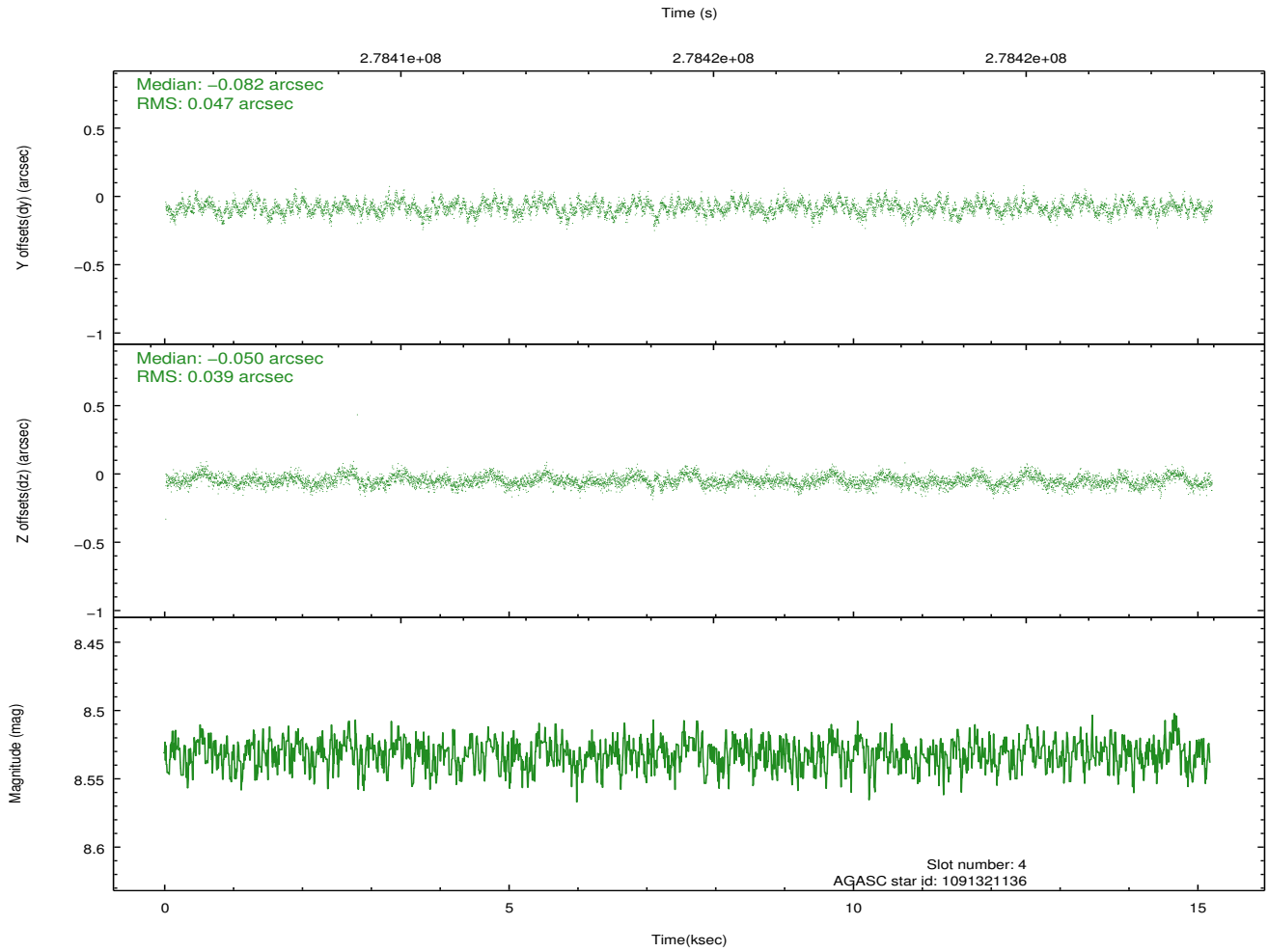
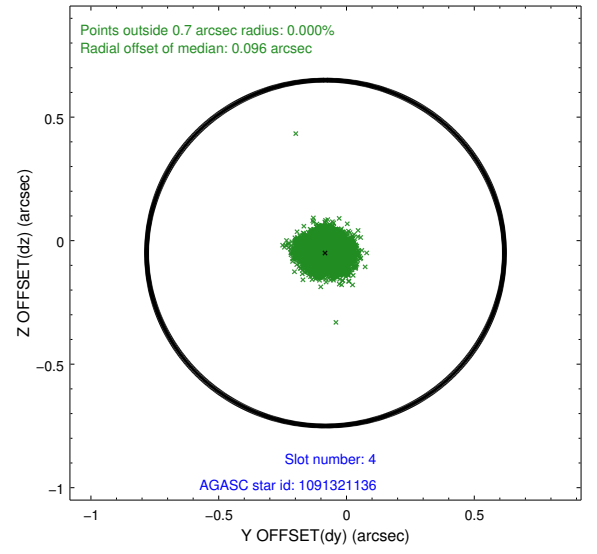
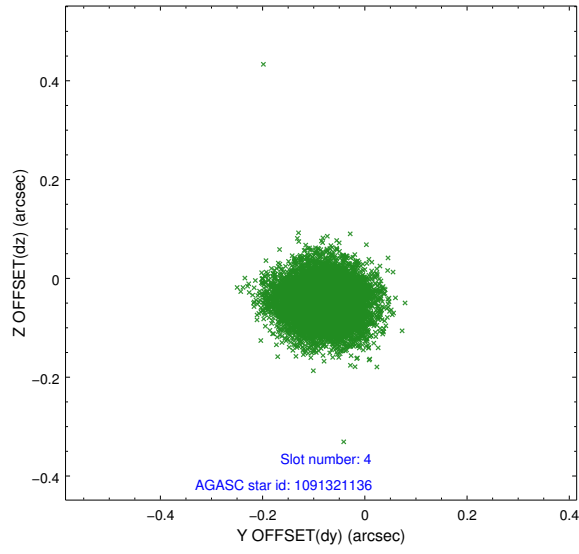
slot	status	id	mag	n_pts	med_dy	med_dz	dr1	dr2	ra	dec	mean_y	mean_z
0	FID	ACIS-S-1	7.19	3706	0.074	-0.021	0.007	0.012	0.000000	0.000000	933.96	-1730.45
1	FID	ACIS-S-5	7.24	3706	-0.145	0.050	0.009	0.015	0.000000	0.000000	-1815.04	166.93
2	FID	ACIS-S-6	7.34	3706	0.050	-0.017	0.010	0.016	0.000000	0.000000	399.23	811.11
3	GUIDE	1091318704	7.61	7410	-0.186	0.067	0.061	0.099	251.955714	-45.390313	-1610.53	-501.53
4	GUIDE	1091321136	8.53	7406	-0.082	-0.050	0.065	0.104	252.629031	-45.865288	-1030.91	1835.11
5	GUIDE	1091321752	6.98	7412	-0.110	-0.117	0.059	0.092	251.516776	-46.486101	2322.86	637.53
6	GUIDE	1091339224	9.30	7360	0.071	0.068	0.113	0.182	252.148017	-46.336106	1041.76	1688.10
7	GUIDE	1091341680	8.44	7407	0.305	0.029	0.066	0.110	251.240217	-46.114317	1552.38	-654.61

2.4 Star Slots

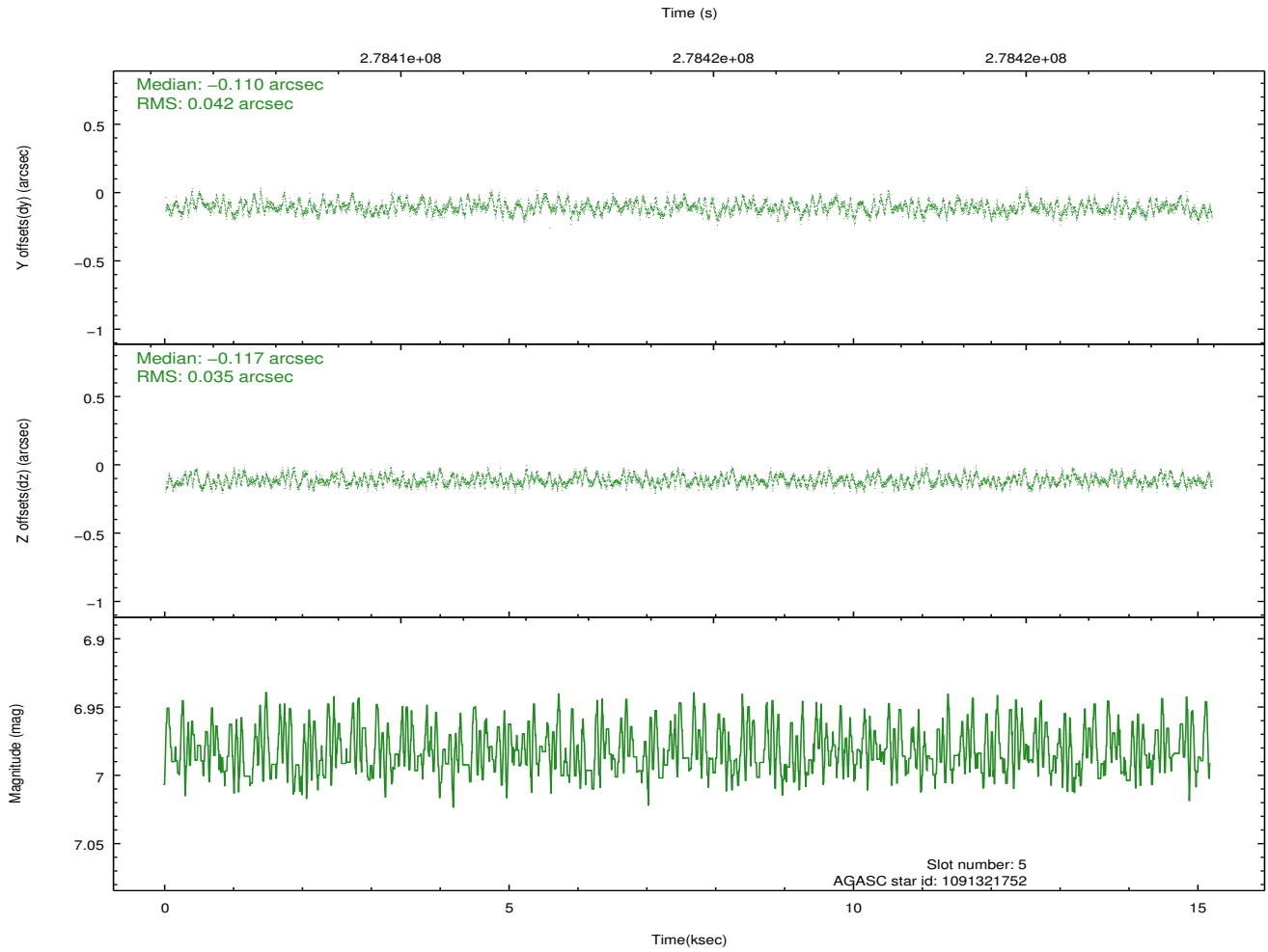
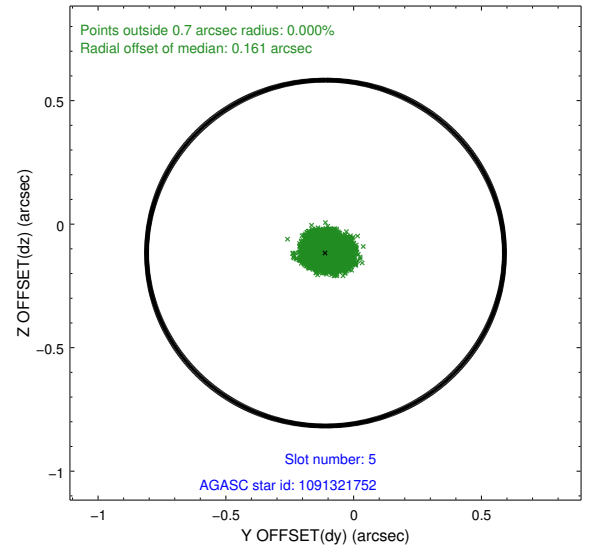
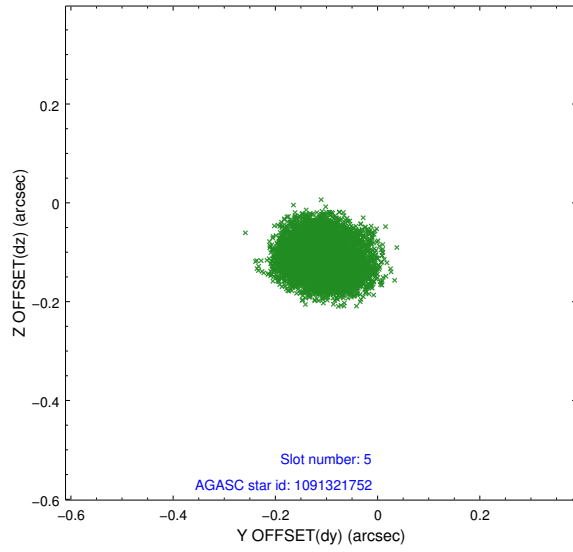
2.4.1 Slot 3



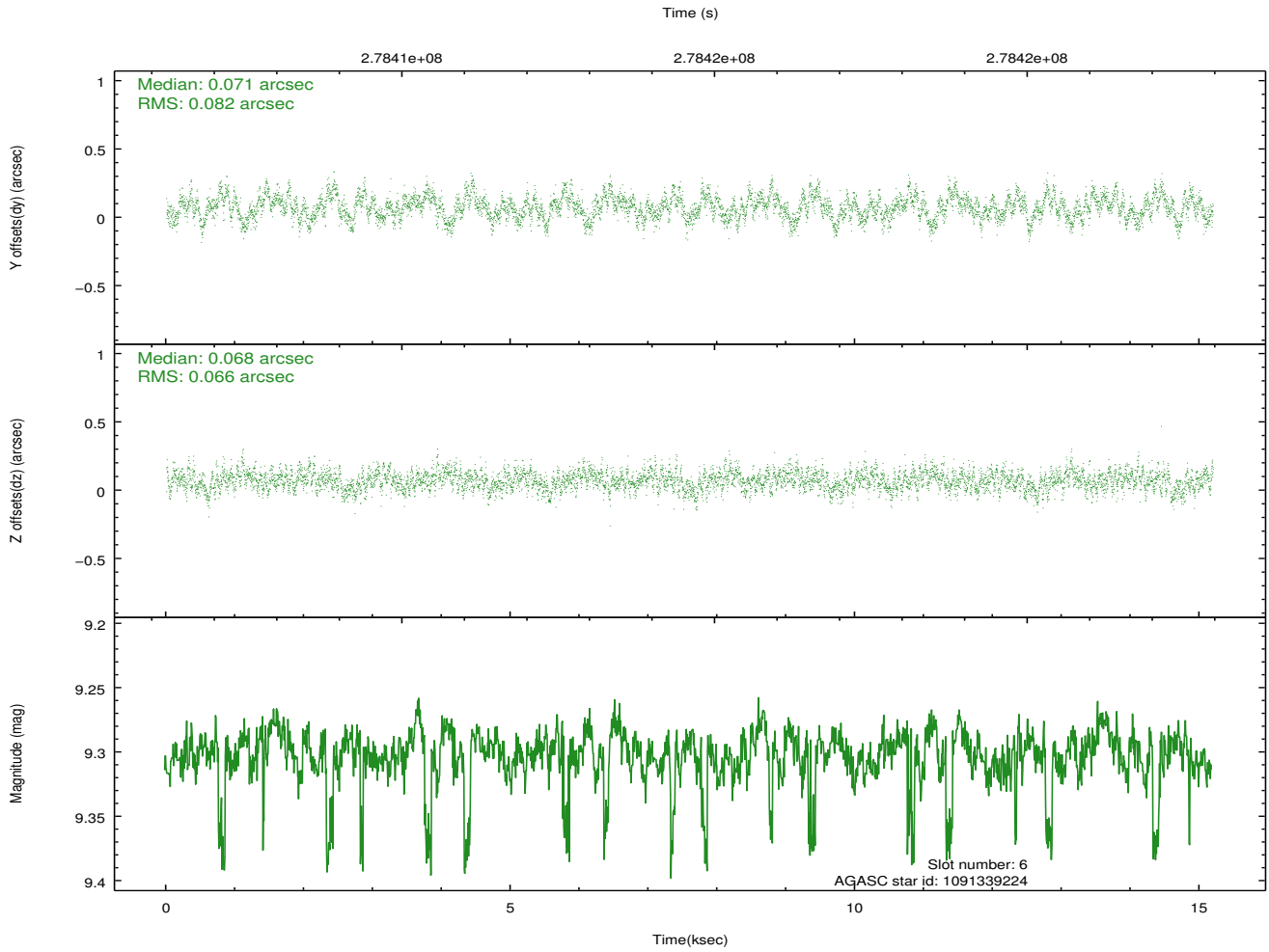
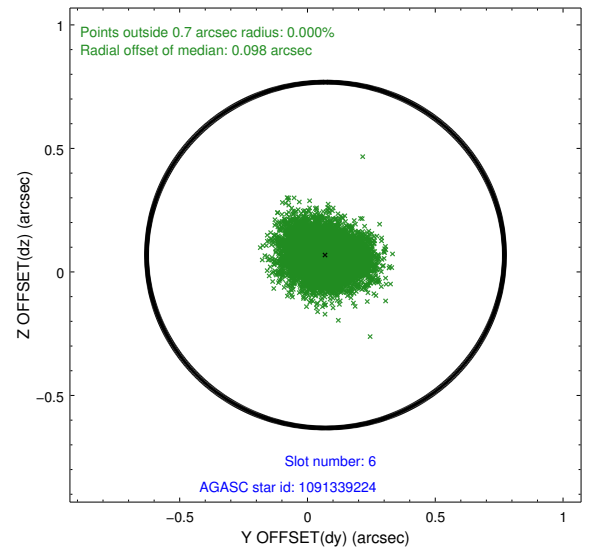
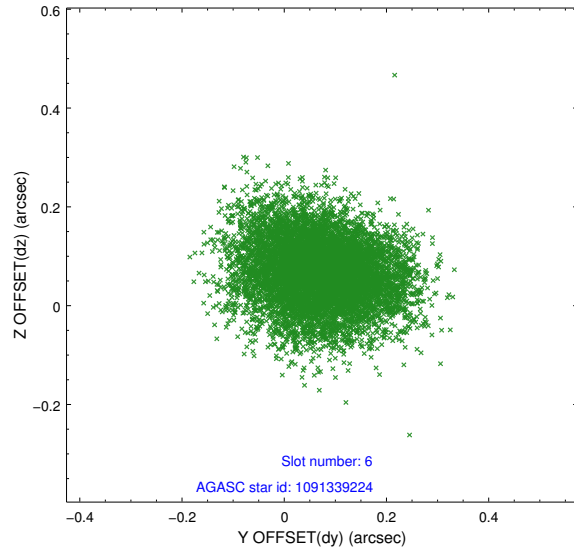
2.4.2 Slot 4



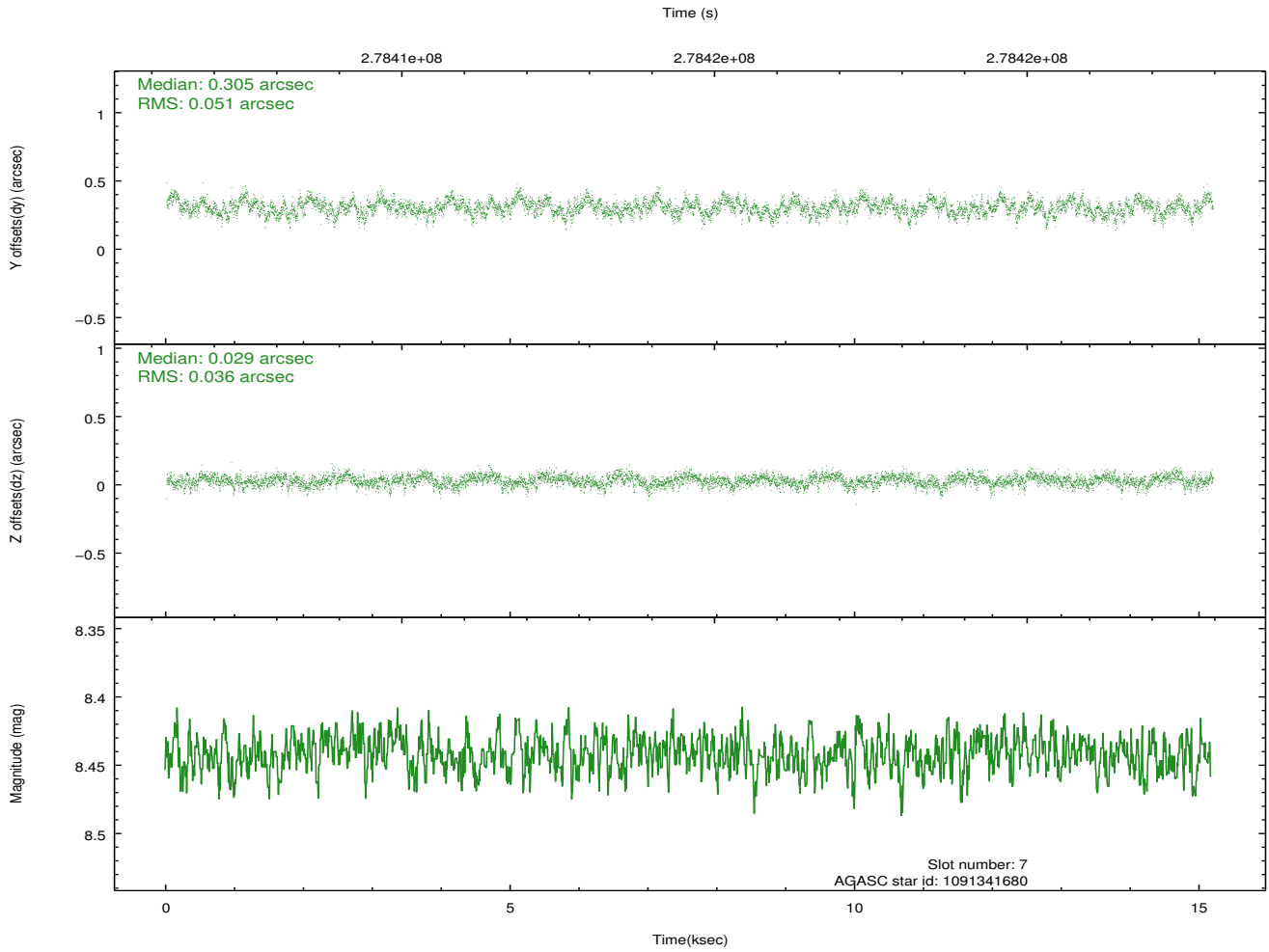
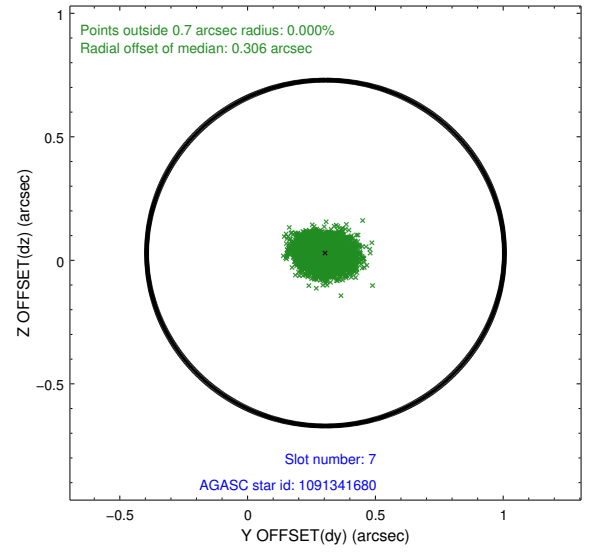
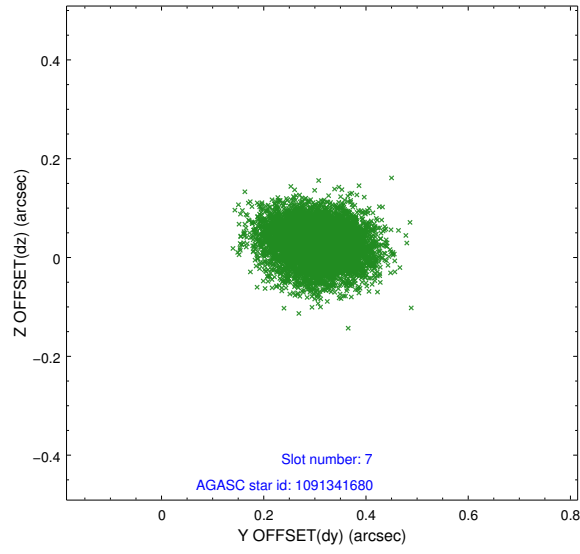
2.4.3 Slot 5



2.4.4 Slot 6

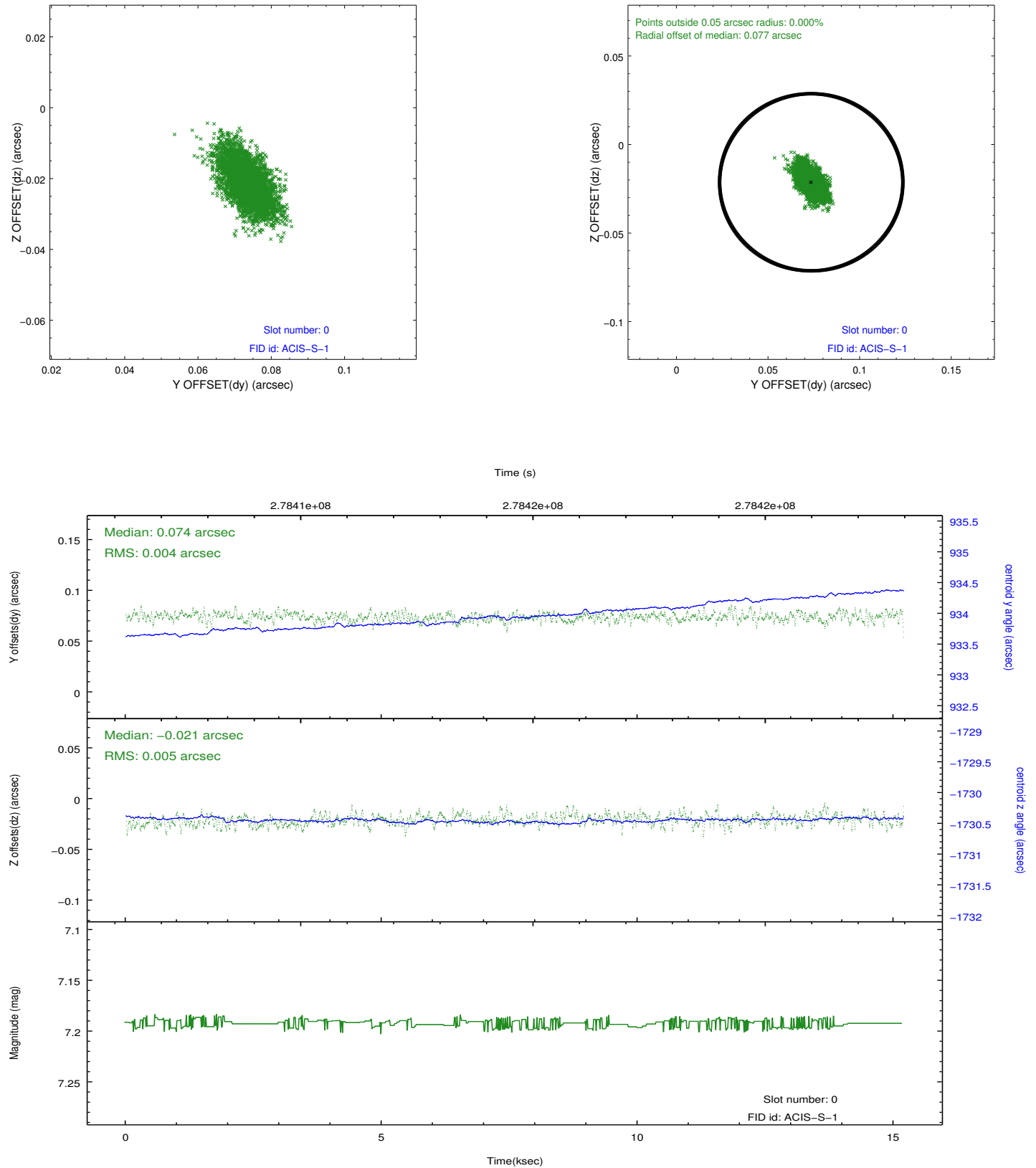


2.4.5 Slot 7

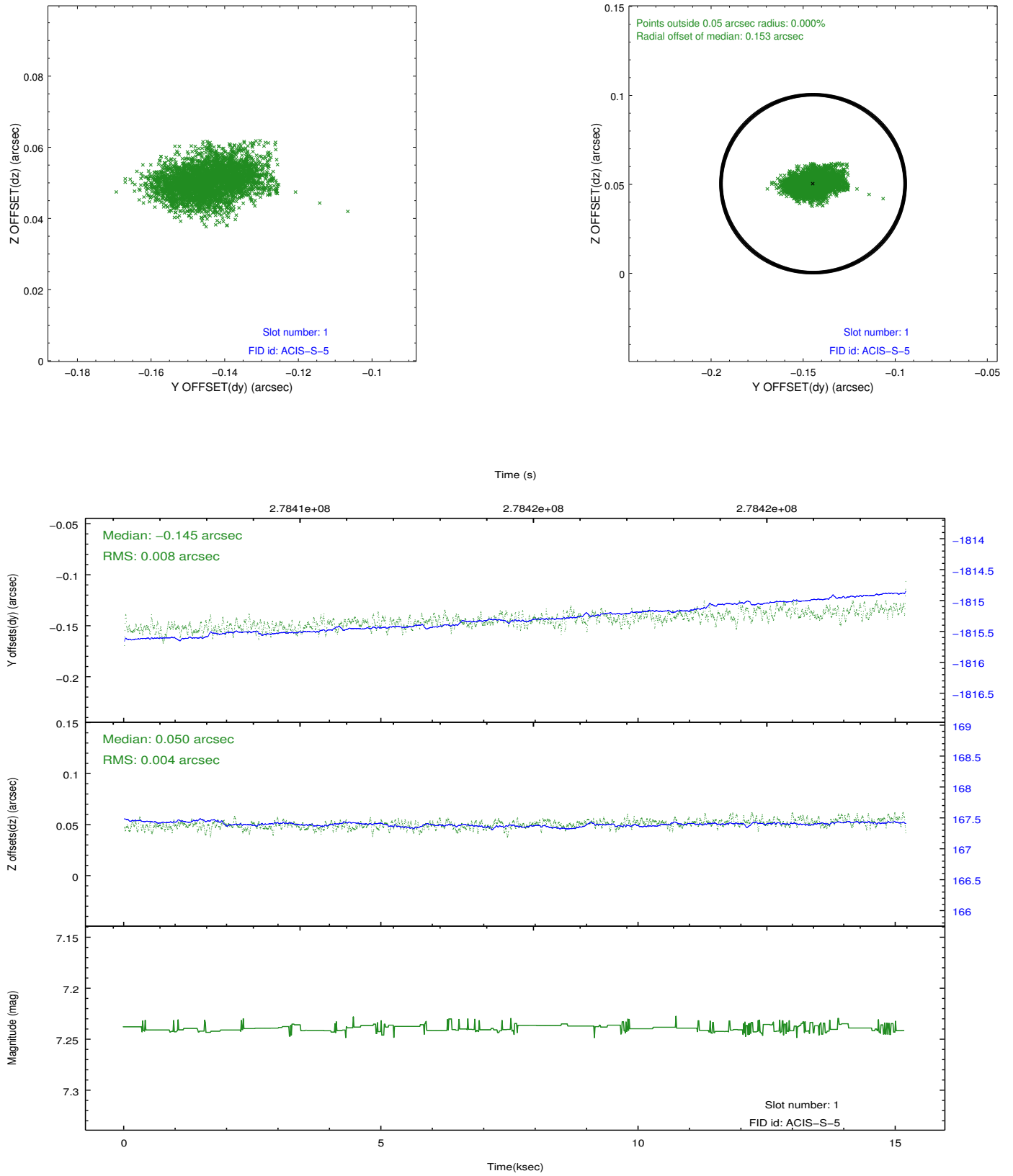


2.5 FID Slots

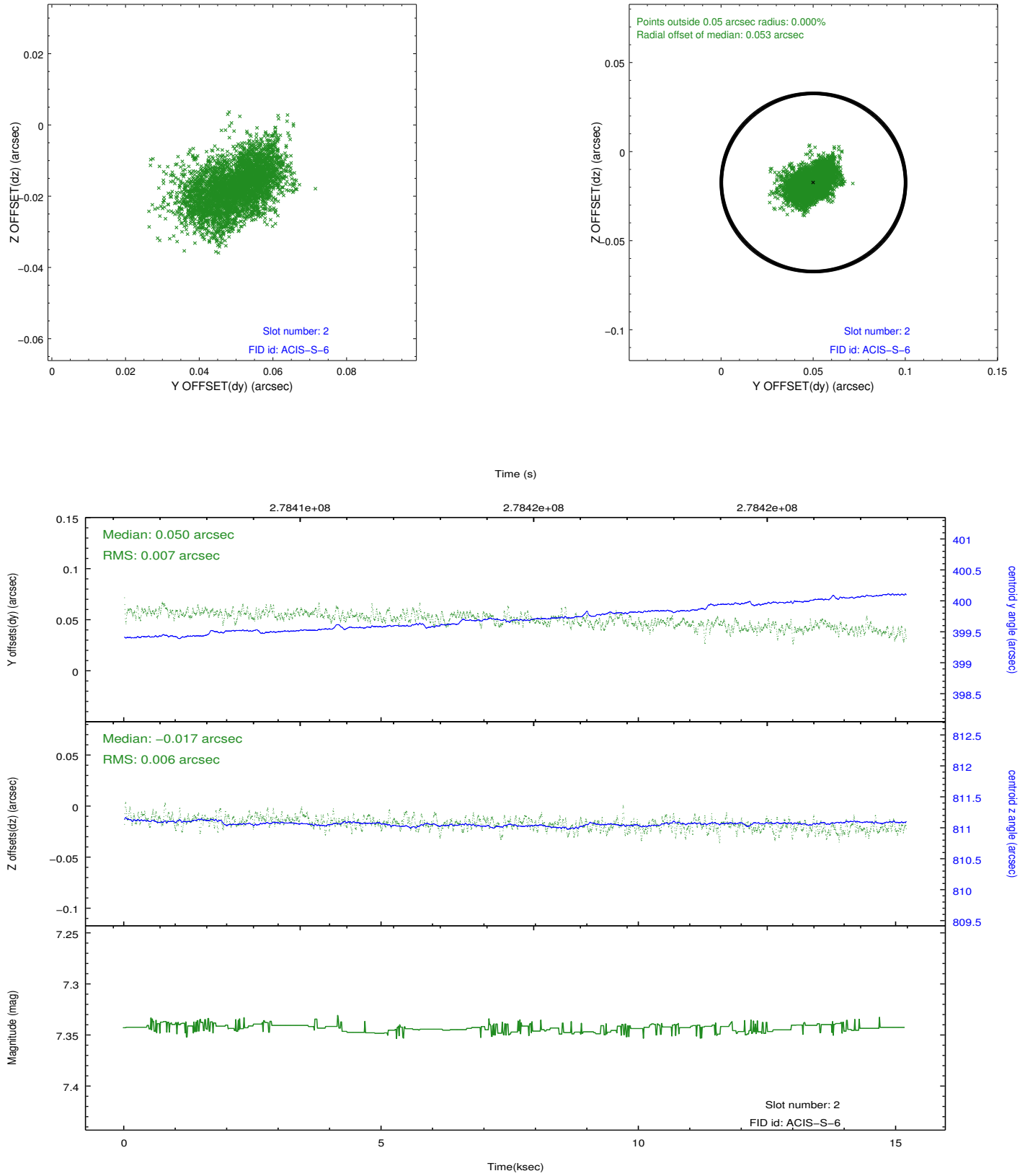
2.5.1 Slot 0



2.5.2 Slot 1



2.5.3 Slot 2



A Summary

A.1 Status

V&V Scientist	Joy Nichols
V&V Date (YYYY-MM-DD)	2012.04.12
V&V Edition	1
V&V Disposition and Status	OK
V&V Charge Time	15.18675

A.2 Comments