

V&V Reference Report

L2 ASCDS Version : 8.1.1

Observation 835 - L2 Version 4

Chandra X-Ray Center

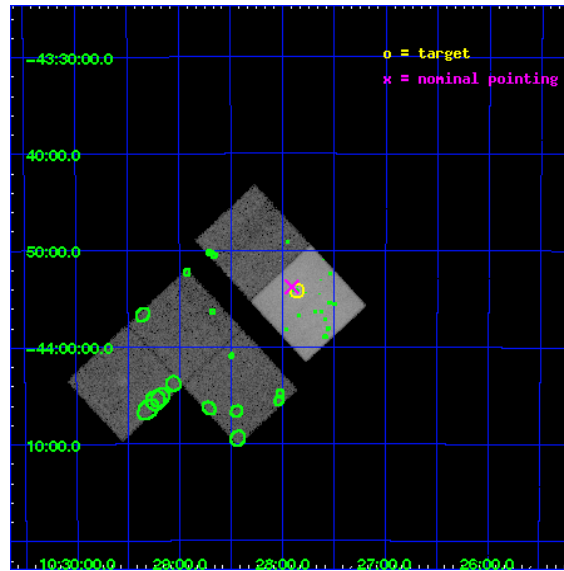
L2 Processing Date : Nov 29 2009

Contents

1	Front	2
2	OBI	3
2.1	OBI	3
2.1.1	Images	3
2.1.2	Bias	3
2.1.3	Parameters	4
2.1.4	Events	4
2.2	Compared Parameters	5
2.3	Aspect	6
2.4	Star Slots	9
2.4.1	Slot 3	9
2.4.2	Slot 4	10
2.4.3	Slot 5	11
2.4.4	Slot 6	12
2.4.5	Slot 7	13
2.5	FID Slots	14
2.5.1	Slot 0	14
2.5.2	Slot 1	15
2.5.3	Slot 2	16
3	Point Sources	17
A	Summary	18
A.1	Status	18
A.2	Comments	18

1 Front

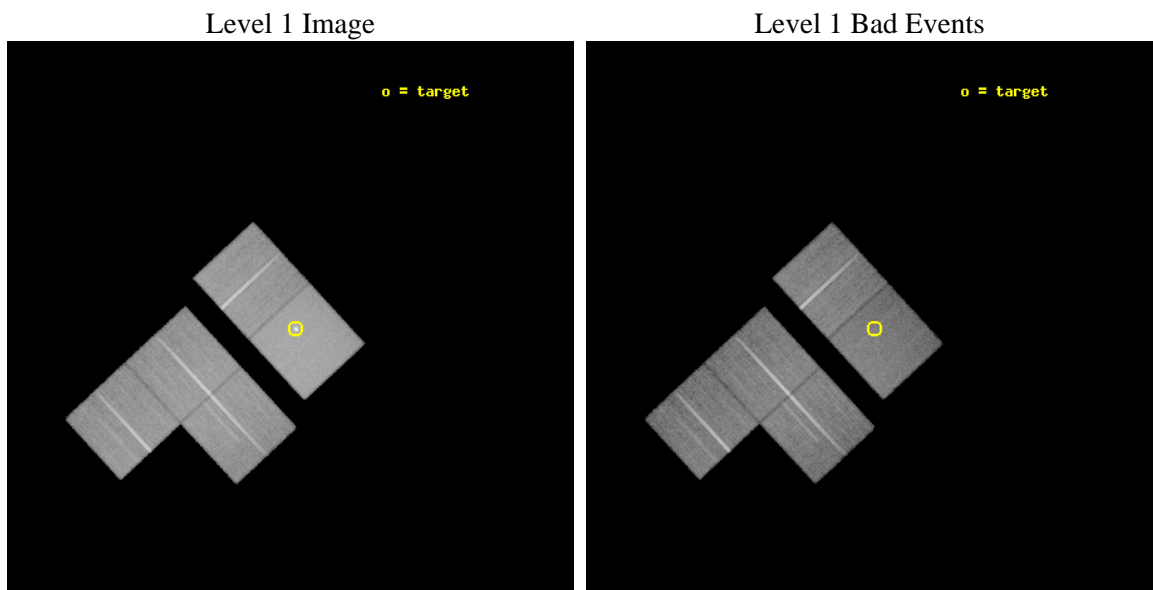
seq_num	700140	Sequence number
obs_id	835	Observation id
title	UNDERSTANDING THE AGN/STARBURST CONNECTION AT HIGH LUMINOSITIES	Pr
observer	Professor Martin Ward	Principal investigator
object	NGC 3256	Source name
dtcycle	0	
cycle	P	events from which exps? Prim/Second/Both
ra_targ	156.965833	Observer's specified target RA
dec_targ	-43.902417	Observer's specified target Dec
ra_nom	156.97719967046	Nominal RA
dec_nom	-43.896382402115	Nominal Dec
roll_nom	47.20641289754	Nominal Roll
revision	4	Processing version of data
ontime	28145.699974582	Sum of GTIs [s]
livetime	27799.969445478	Livetime [s]
ontime0	28145.699974582	Sum of GTIs [s]
ontime2	28142.359014362	Sum of GTIs [s]
ontime3	28142.359044291	Sum of GTIs [s]
ontime6	28142.359014362	Sum of GTIs [s]
ontime7	28145.699974582	Sum of GTIs [s]
l2events	244216	Number of level 2 events



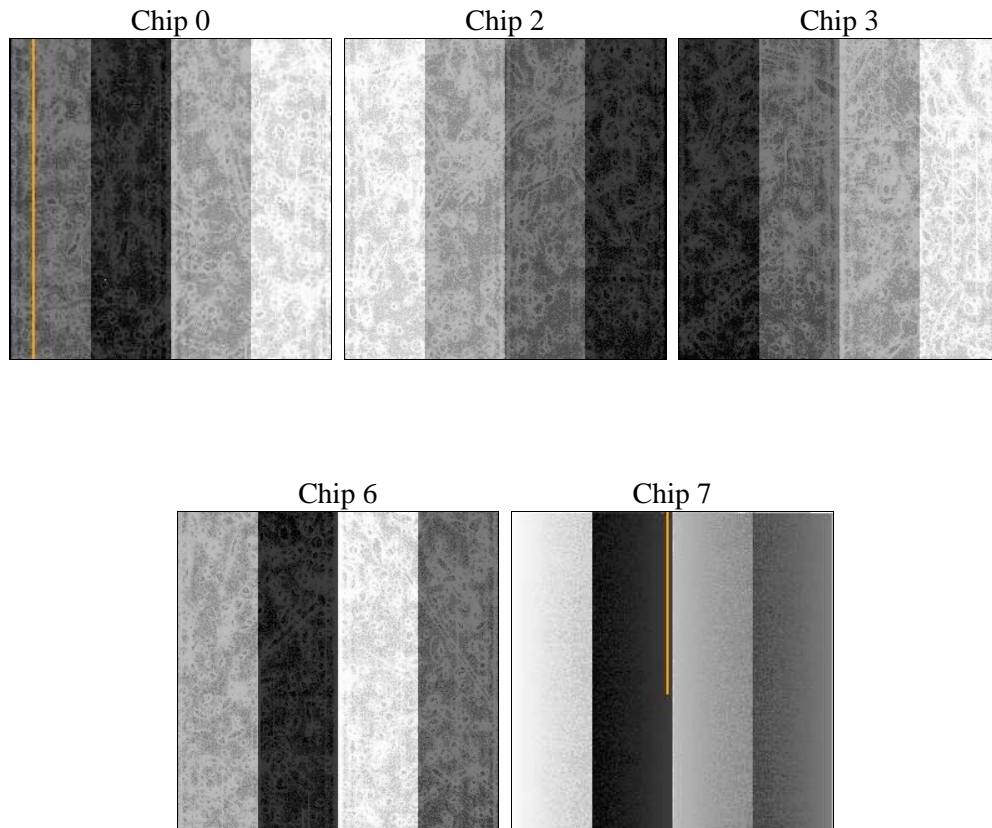
2 OBI

2.1 OBI

2.1.1 Images



2.1.2 Bias



2.1.3 Parameters

obi_num	0	Obi number	sched_exp_time	29000.000000	Scheduled observation exposure time
ascdsver	8.1.1	ASCDS version number	ontime	28145.699974582	Sum of GTIs [s]
caldsver	4.1.4	 	ontime0	28145.699974582	Sum of GTIs [s]
date	2009-11-29T23:10:39	Date and time of file creation	ontime2	28142.359014362	Sum of GTIs [s]
revision	3	Processing version of data	ontime3	28142.359044291	Sum of GTIs [s]
			ontime6	28142.359014362	Sum of GTIs [s]
			ontime7	28145.699974582	Sum of GTIs [s]
			l1events	1236669	Number of level 1 events

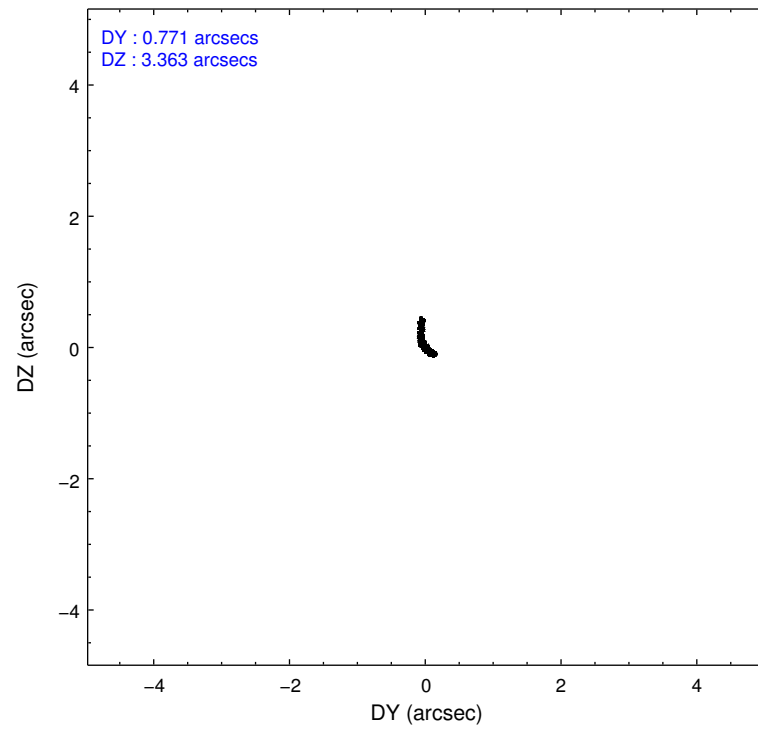
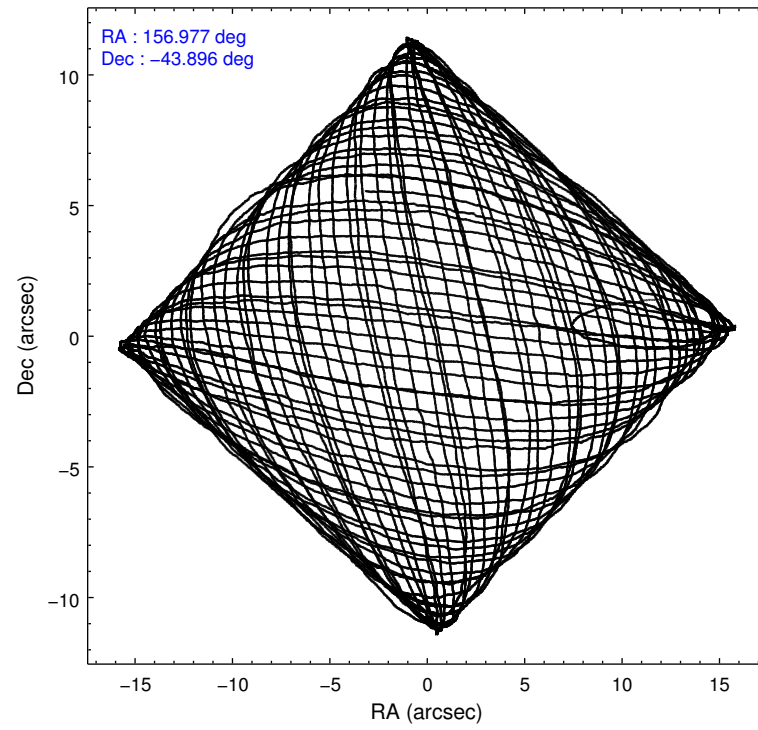
2.1.4 Events

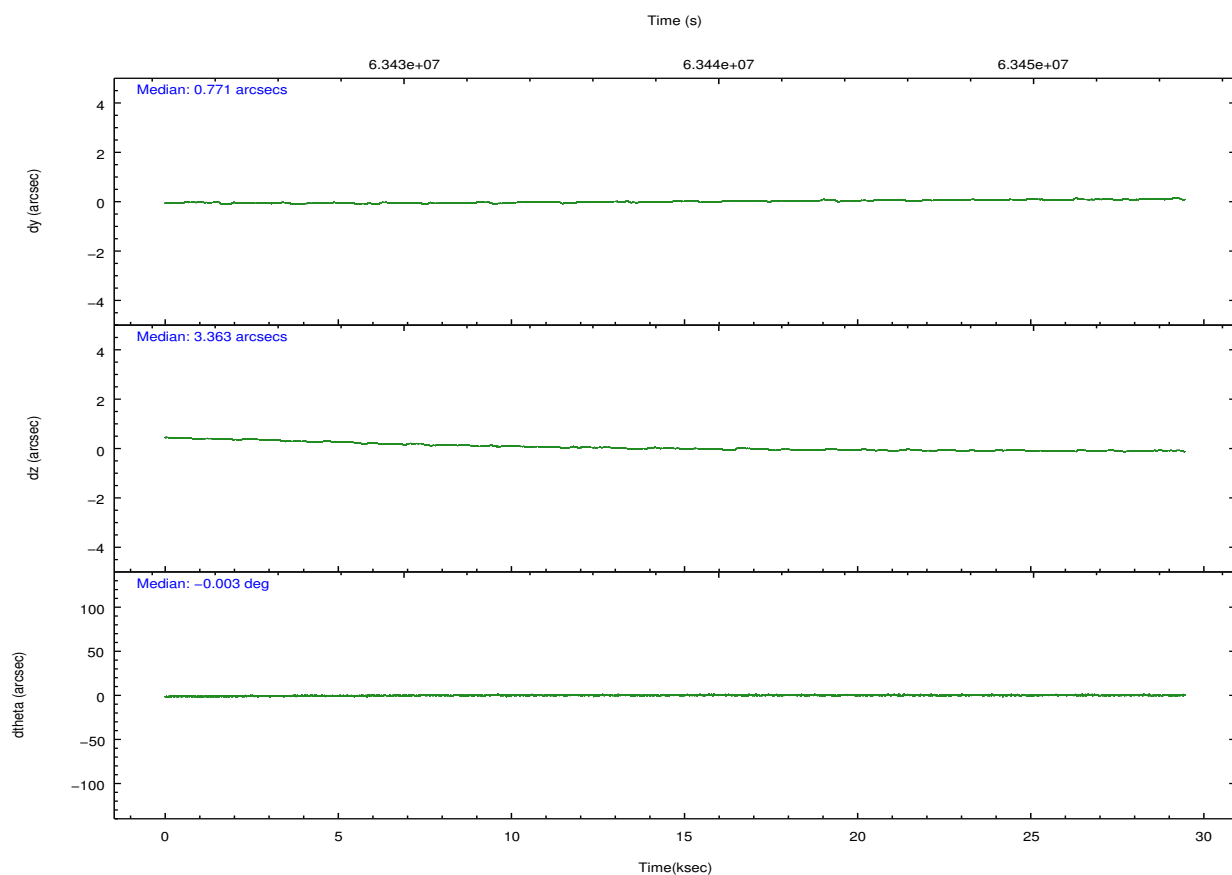
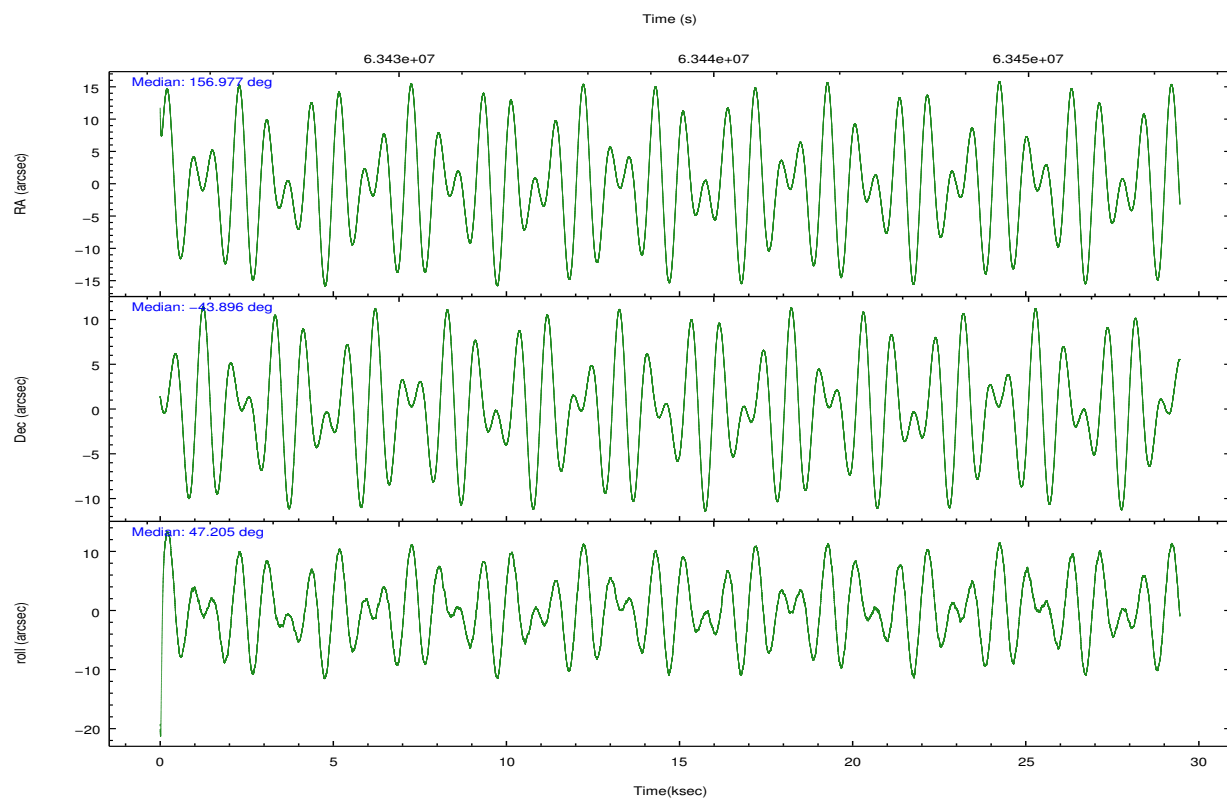
	ccd 0	ccd 2	ccd 3	ccd 6	ccd 7		ccd 0	ccd 2	ccd 3	ccd 6	ccd 7
level 1 events	213733	233765	228995	234968	325208	grade 0 events	5402	4796	4857	5191	18346
rejected events	190741	212723	207146	211503	159469		2%	2%	2%	2%	5%
rejected %	89%	90%	90%	90%	49%	grade 1 events	50	50	44	39	145
							0%	0%	0%	0%	0%
						grade 2 events	8968	8415	8737	9022	35285
							4%	3%	3%	3%	10%
						grade 3 events	1648	1291	1428	1504	11490
							0%	0%	0%	0%	3%
						grade 4 events	1537	1366	1316	1343	10614
							0%	0%	0%	0%	3%
						grade 5 events	4405	3972	4256	4901	16442
							2%	1%	1%	2%	5%
						grade 6 events	5441	5175	5514	6408	90016
							2%	2%	2%	2%	27%
						grade 7 events	186282	208700	202843	206560	142870
							87%	89%	88%	87%	43%

2.2 Compared Parameters

Parameter	Planned	Actual	Parameter	Planned	Actual
Instrument	ACIS	ACIS	Obspar format version number	6	6
Detector	ACIS-02367	ACIS-02367	Obspar file type	PREDICTED	ACTUAL
Grating	NONE	NONE	Obspar update status	NONE	UPDATED
Data mode	FAINT	FAINT	Number of optional ACIS chips dropped	0	0
Observation mode	POINTING	POINTING	On-chip summing requested	N	N
Pointing RA	156.968671	156.9771996704624	Subarray requested	NONE	NONE
Pointing Dec	-43.923215	-43.89638240211509	Alternating exposures requested	N	N
Pointing Roll	47.043881	47.20641289754025	Primary exposure time	0.000000	3.3
SIM focus pos (mm)	-0.684267	-0.6828225247311905			
SIM defocus (mm)	0	0.001444936568705701			
SIM translation stage pos (mm)	-190.132523	-190.1400660498719			
SIM translation stage offset (mm)	0	0.00754346686406393			
Observation start time	63424338.184000	63423150.110619			
Observation start date	2000-01-05T01:51:14	2000-01-05T01:32:30			
Observation end time	63453338.184000	63453664.874226			
Observation end date	2000-01-05T09:54:34	2000-01-05T10:01:04			
Read mode	TIMED	TIMED			

2.3 Aspect



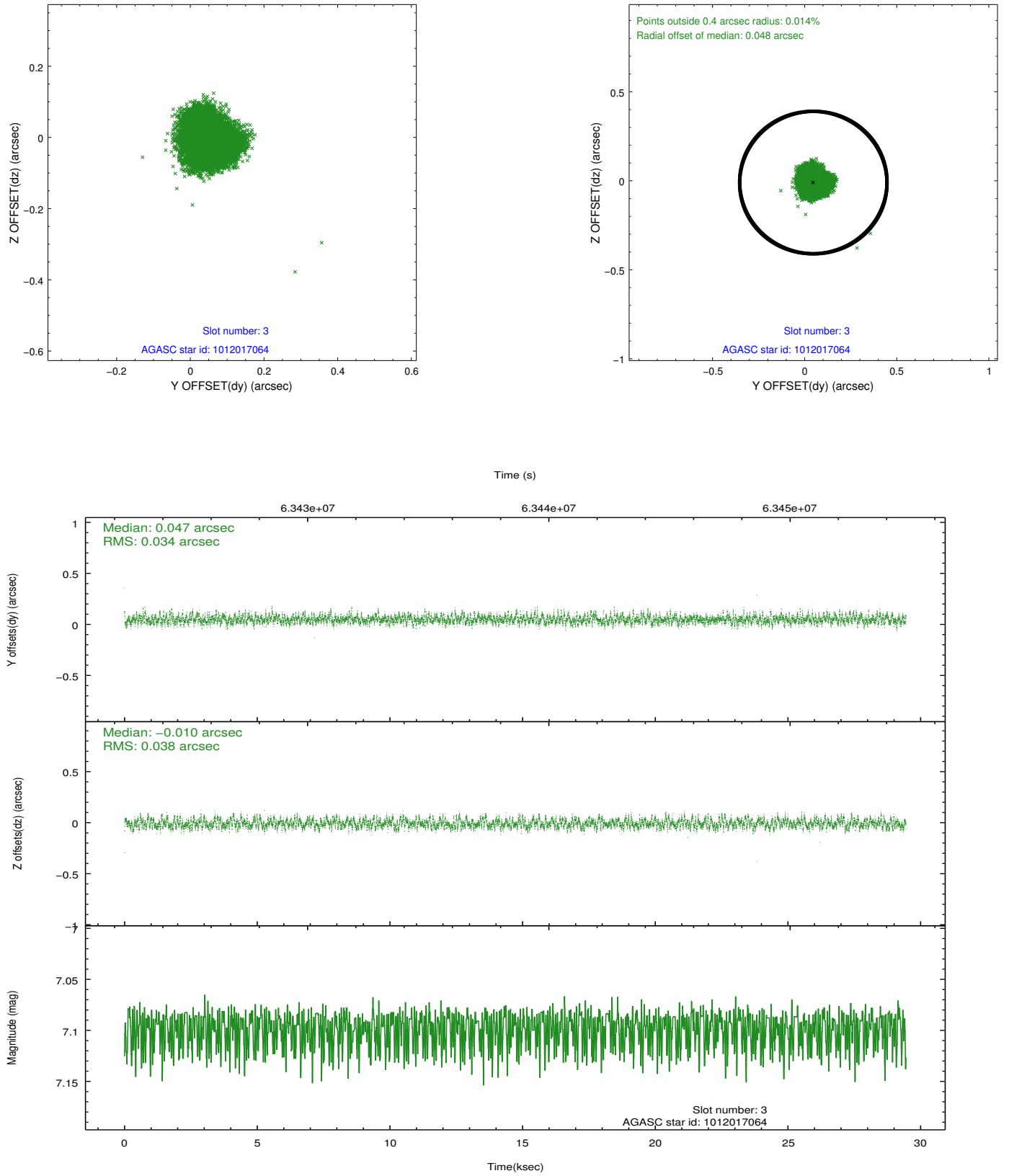


Slot Statistics

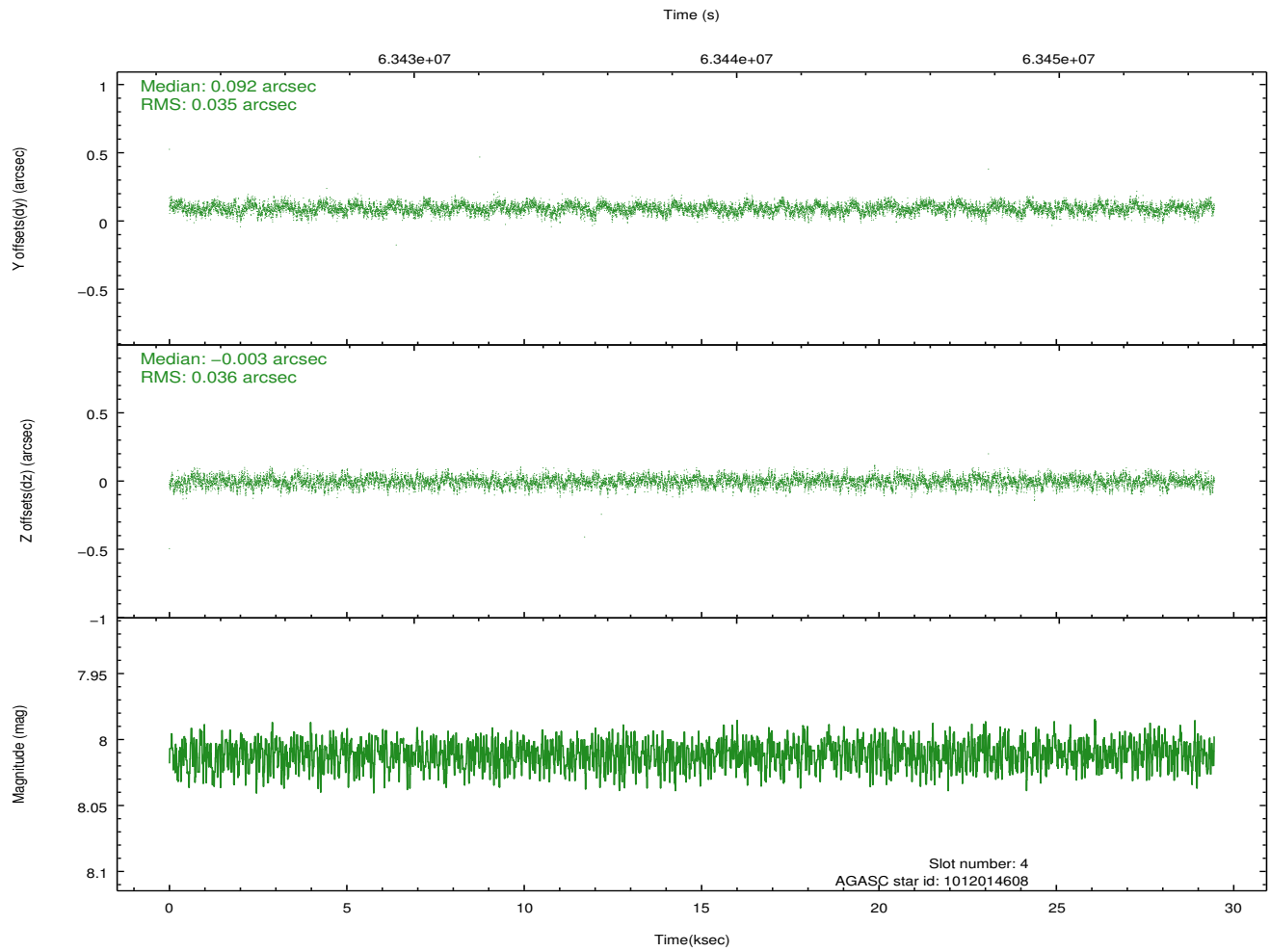
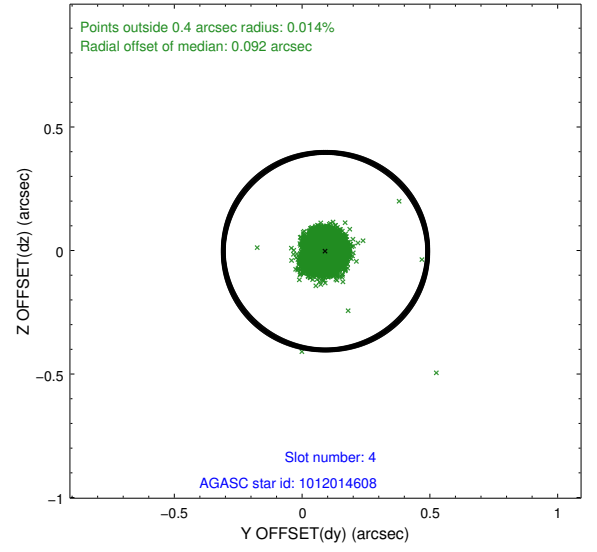
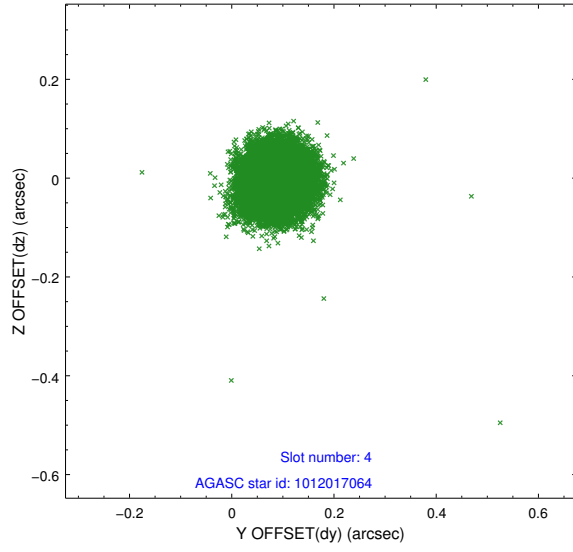
slot	status	id	mag	n_pts	med_dy	med_dz	dr1	dr2	ra	dec	mean_y	mean_z
0	FID	ACIS-S-1	7.19	14363	0.023	-0.014	0.010	0.021	0.000000	0.000000	942.62	-1720.17
1	FID	ACIS-S-5	7.24	14364	-0.035	0.026	0.007	0.011	0.000000	0.000000	-1806.37	177.58
2	FID	ACIS-S-6	7.36	14363	-0.009	-0.000	0.009	0.015	0.000000	0.000000	408.30	821.38
3	GUIDE	1012017064	7.10	14366	0.047	-0.010	0.055	0.085	157.176692	-43.838343	591.00	-187.26
4	GUIDE	1012014608	8.01	14365	0.092	-0.003	0.053	0.085	156.896649	-44.513568	-1681.60	-1312.75
5	GUIDE	1012009136	8.74	14361	-0.250	-0.130	0.072	0.116	157.282492	-43.311873	2169.13	897.22
6	GUIDE	1012025440	9.12	14356	0.256	0.095	0.079	0.126	156.542398	-44.472818	-2196.21	-548.36
7	GUIDE	1012144000	9.54	14359	-0.143	0.042	0.100	0.157	157.754474	-43.608813	2216.51	-734.06

2.4 Star Slots

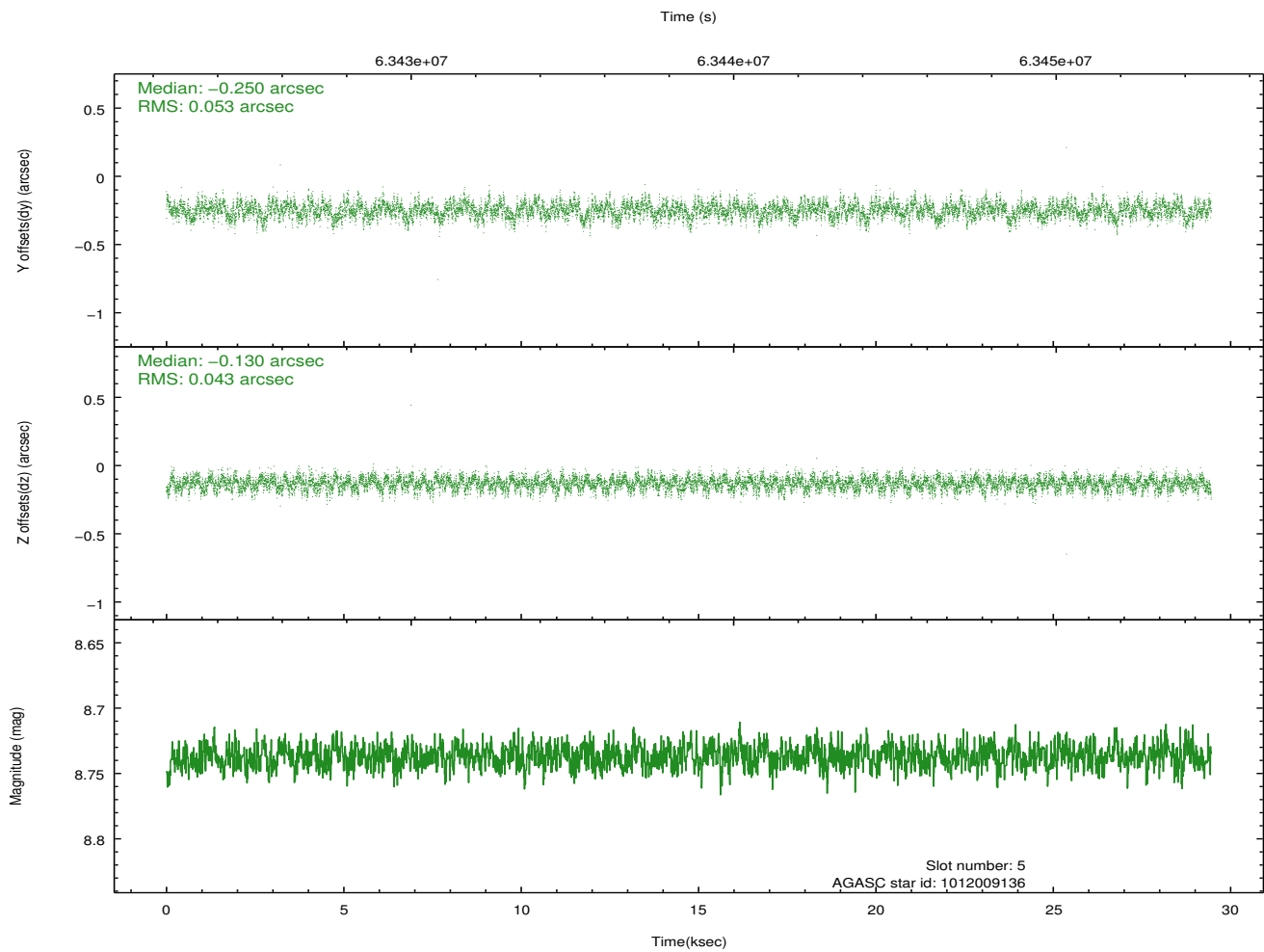
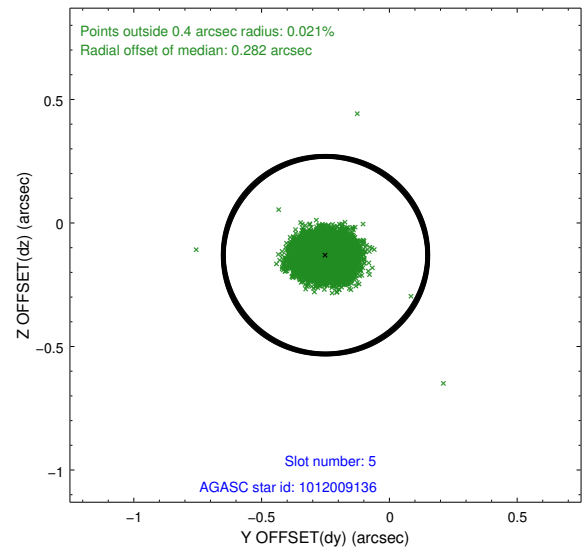
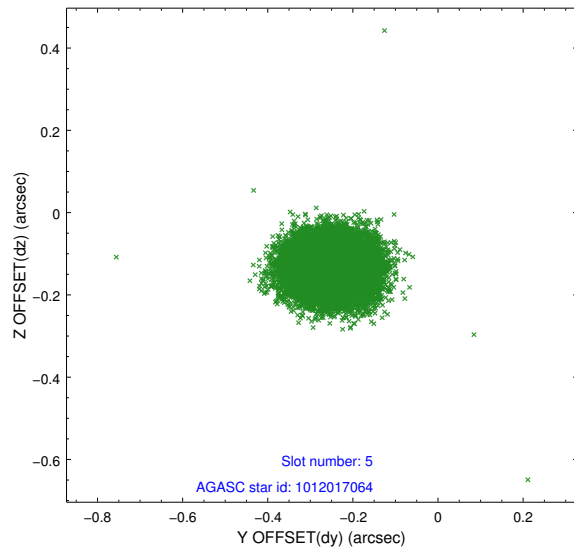
2.4.1 Slot 3



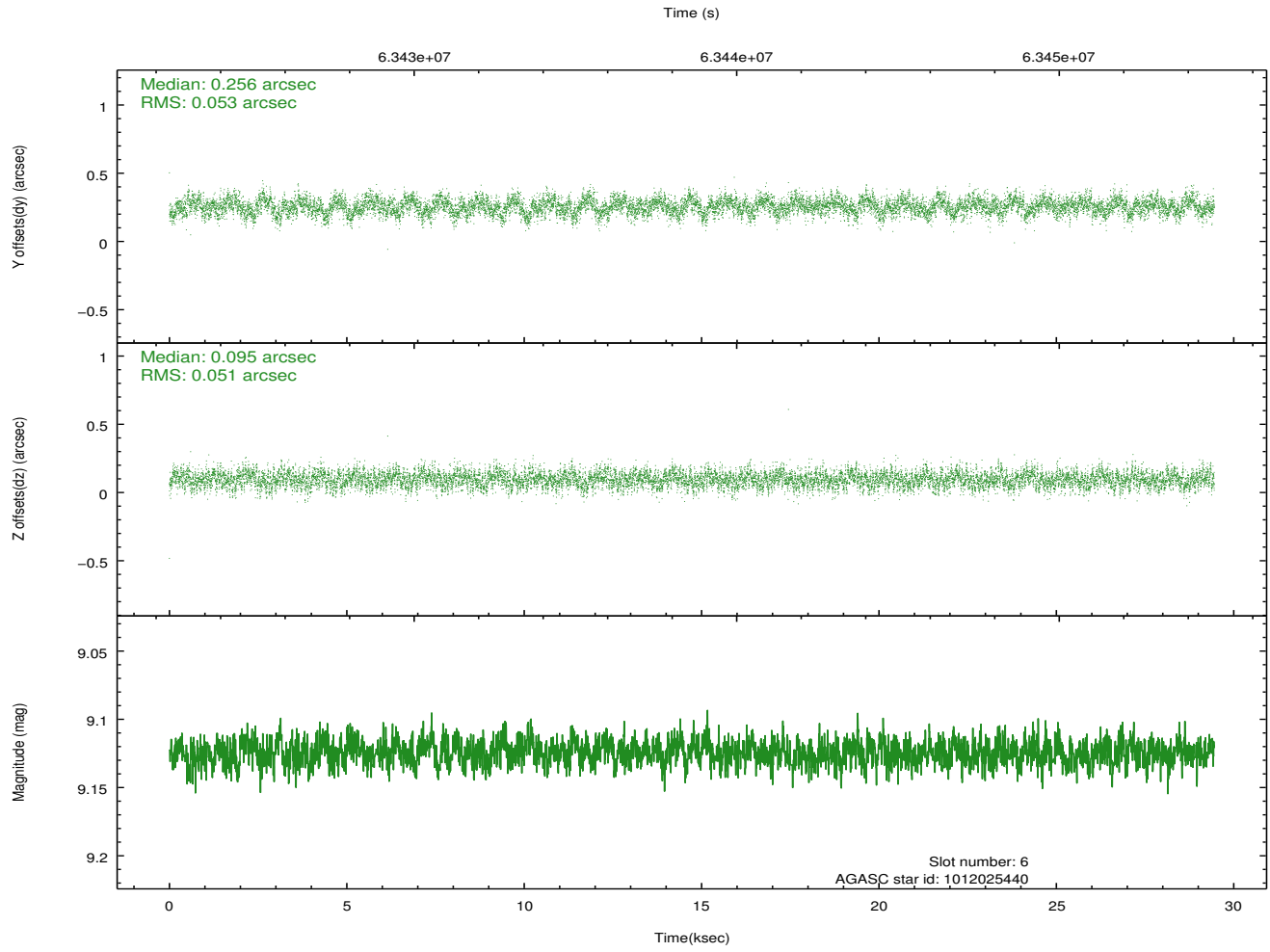
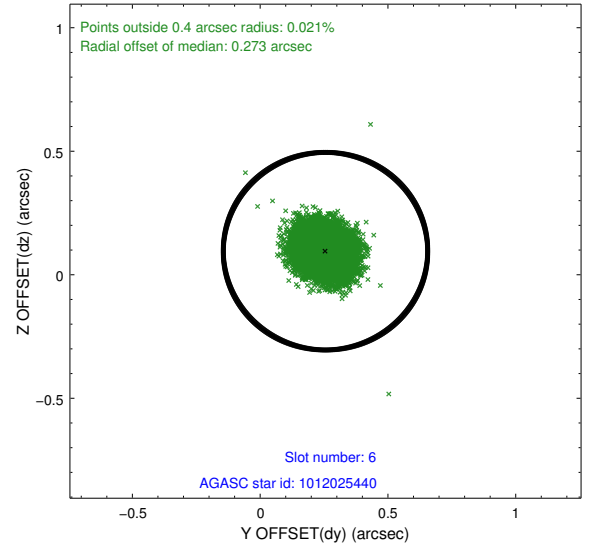
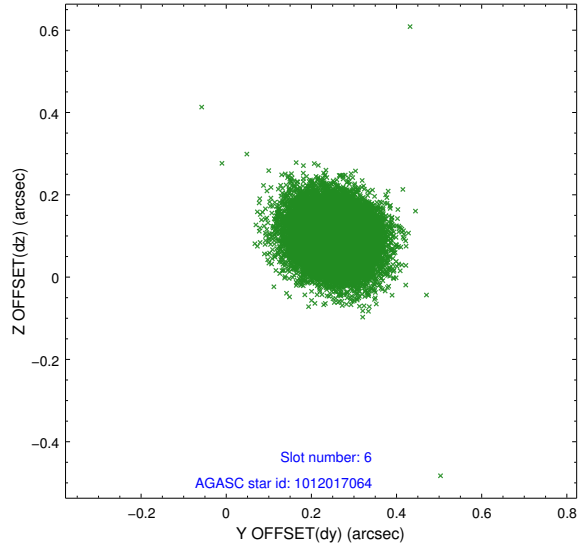
2.4.2 Slot 4



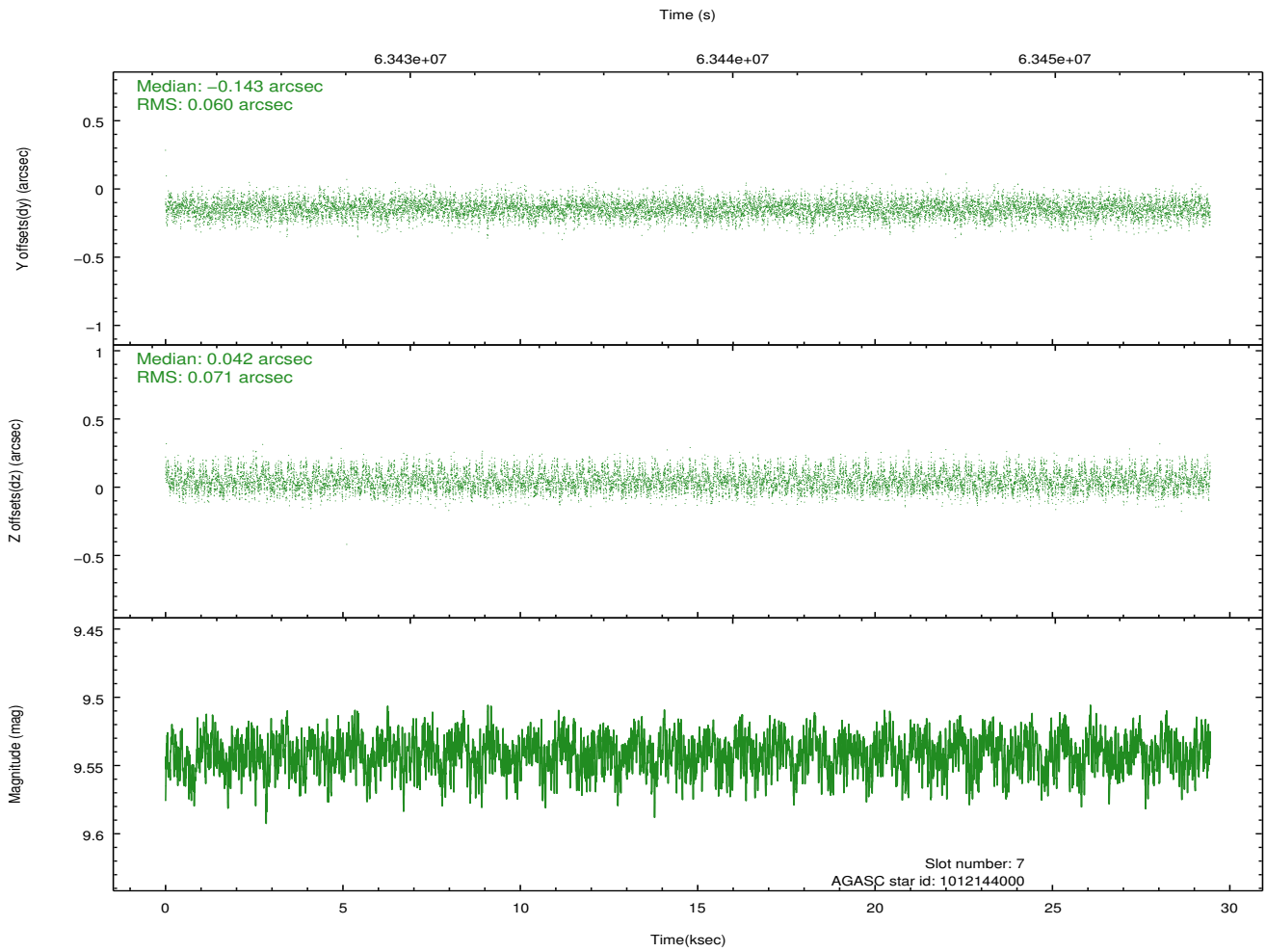
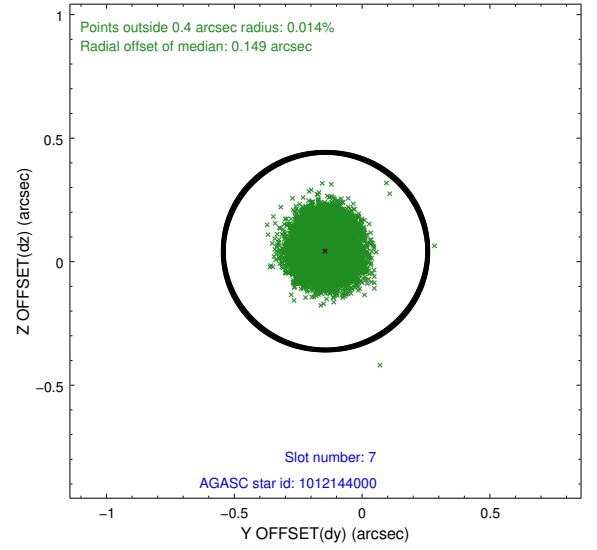
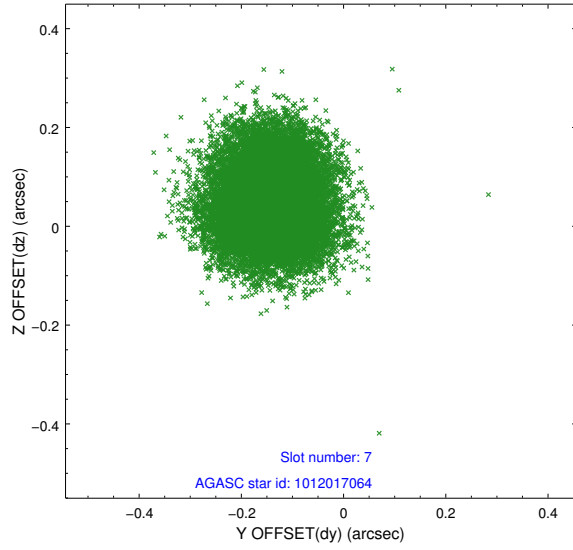
2.4.3 Slot 5



2.4.4 Slot 6

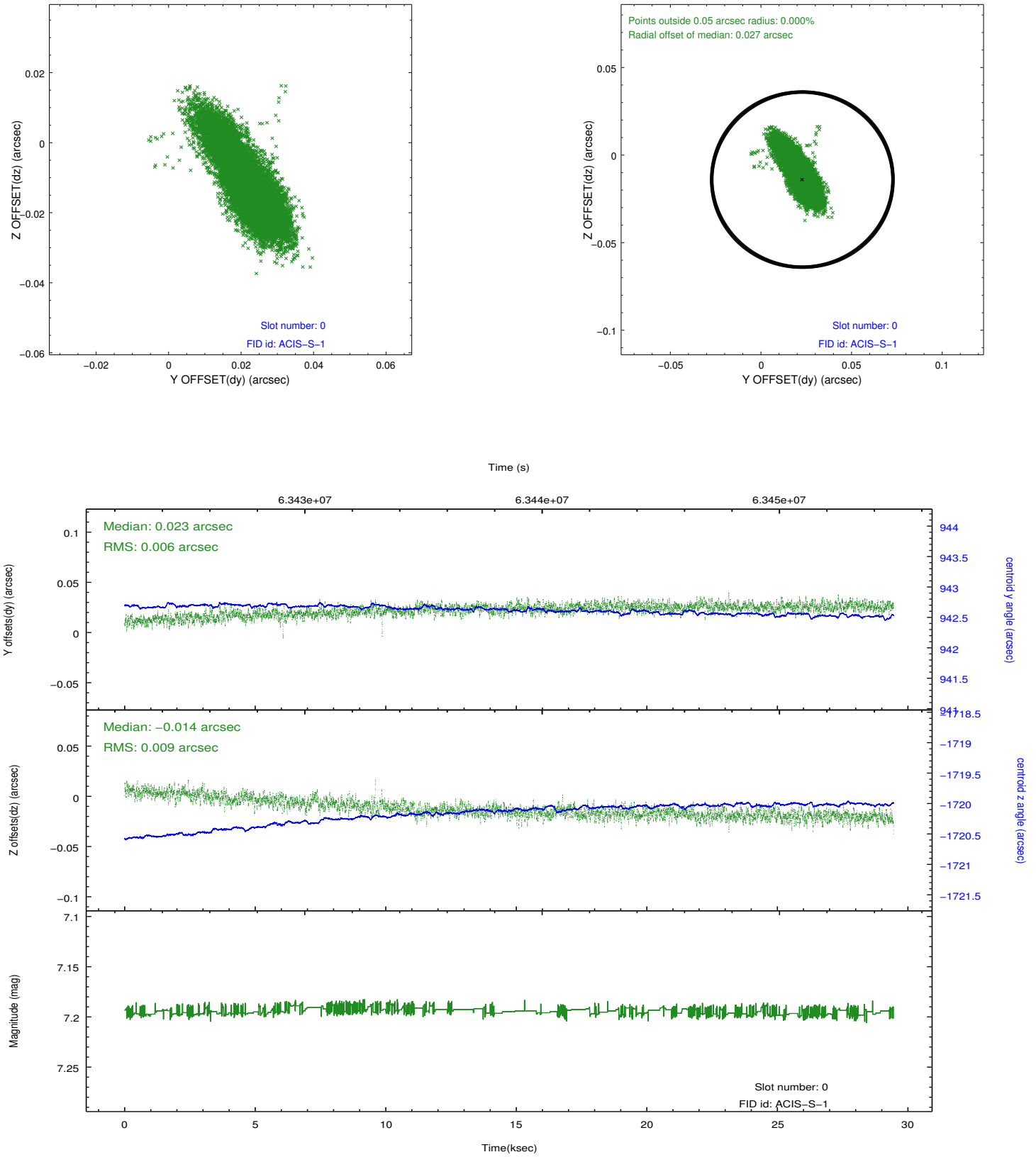


2.4.5 Slot 7

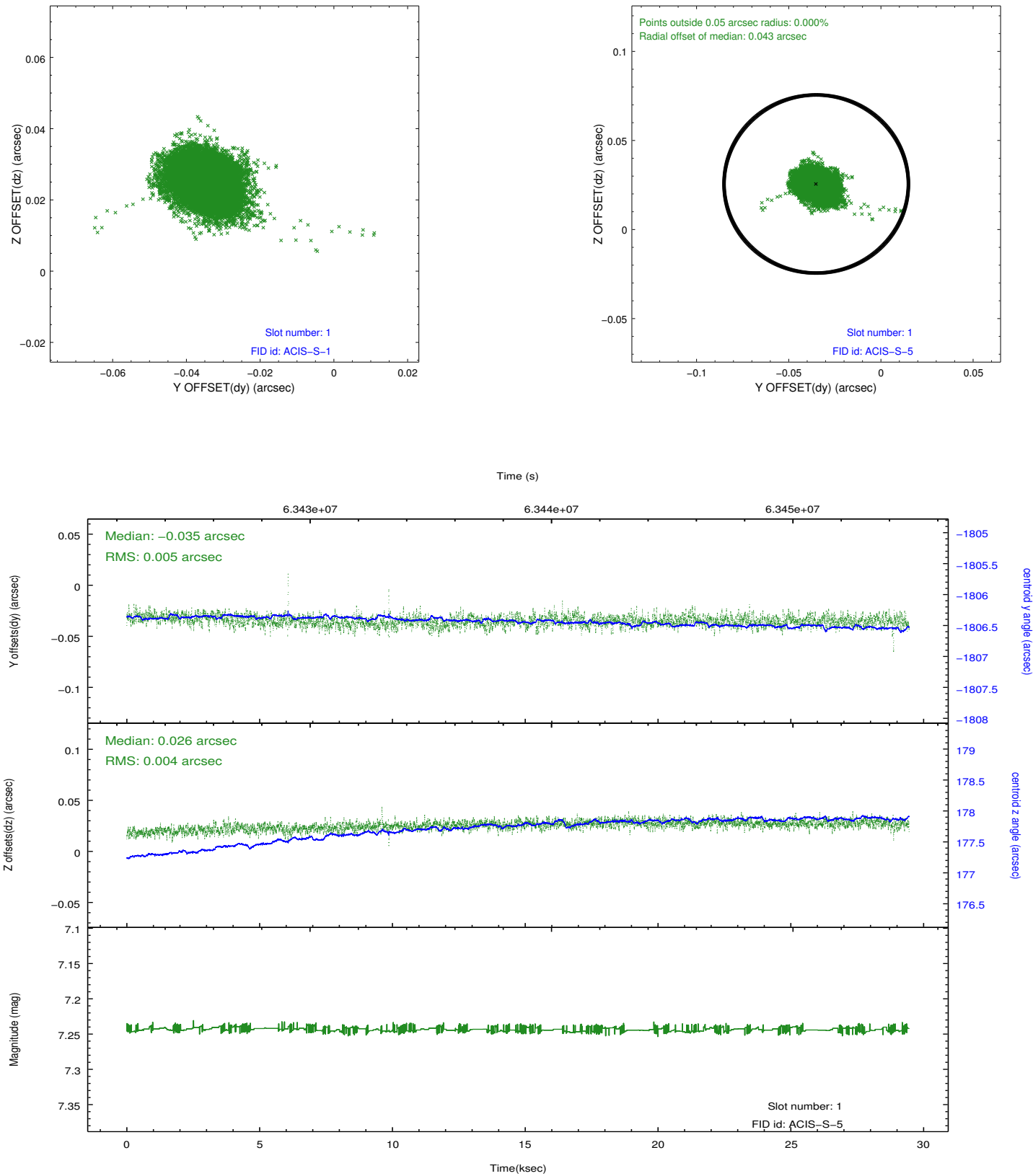


2.5 FID Slots

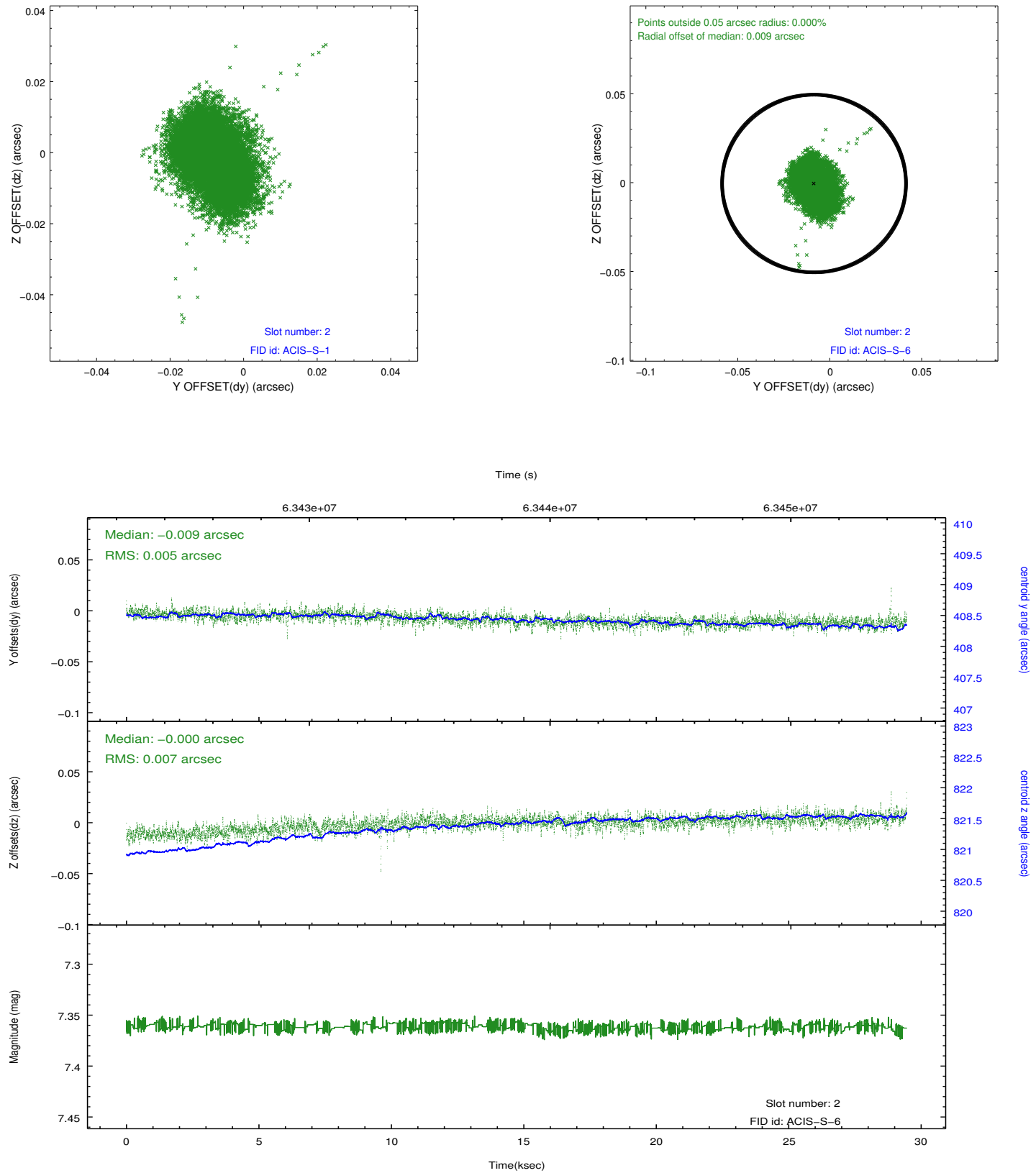
2.5.1 Slot 0



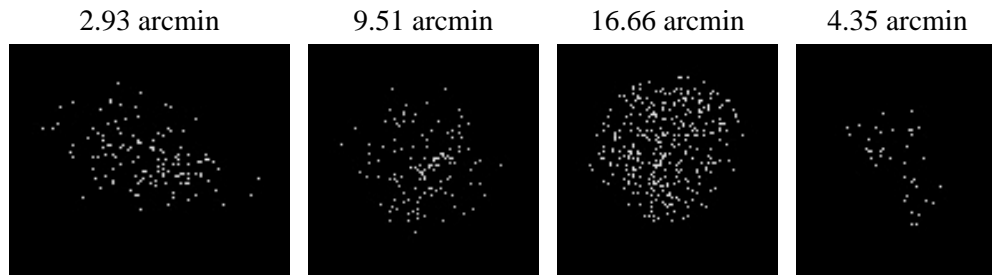
2.5.2 Slot 1



2.5.3 Slot 2



3 Point Sources



A Summary

A.1 Status

V&V Scientist	Beth Sundheim
V&V Date (YYYY-MM-DD)	2009.11.30
V&V Edition	1
V&V Disposition and Status	OK
V&V Charge Time	28.149

A.2 Comments

This observation was acquired with the focal plane temperature raised from -120C to -110C, for attempted recalibration of ACIS for the 1999-09-16 through 2000-01-28 period. This reprocessing of the data applies no CTI correction because none is available for that temperature.