

V&V Reference Report

L2 ASCDS Version : 8.4.3.1

Observation 8265 - L2 Version 3
Chandra X-Ray Center

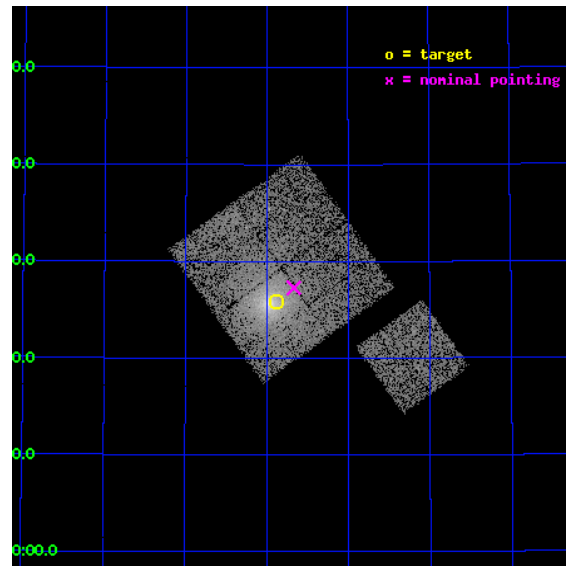
L2 Processing Date : Apr 16 2012

Contents

1	Front	2
2	OBI	3
2.1	OBI	3
2.1.1	Images	3
2.1.2	Bias	3
2.1.3	Parameters	4
2.1.4	Events	4
2.2	Compared Parameters	5
2.3	Aspect	6
2.4	Star Slots	9
2.4.1	Slot 3	9
2.4.2	Slot 4	10
2.4.3	Slot 5	11
2.4.4	Slot 6	12
2.4.5	Slot 7	13
2.5	FID Slots	14
2.5.1	Slot 0	14
2.5.2	Slot 1	15
2.5.3	Slot 2	16
A	Summary	17
A.1	Status	17
A.2	Comments	17

1 Front

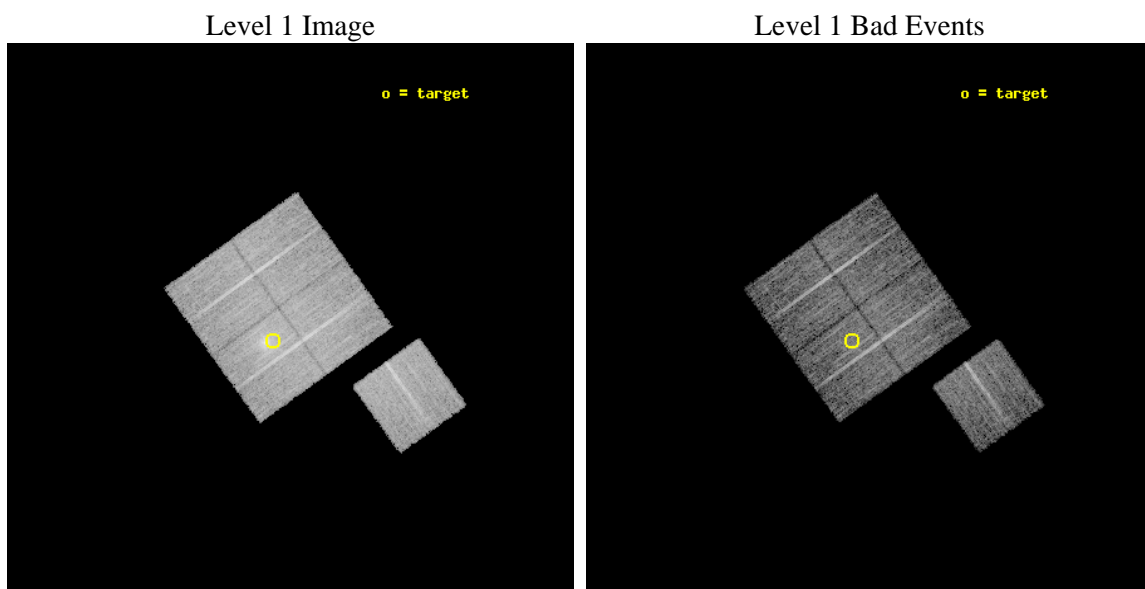
seq_num	800660	Sequence number
obs_id	8265	Observation id
title	Chandra observations of flux-limited sample of low-redshift galaxy clusters - A	Proposal title
observer	Dr. Stephen Murray	Principal investigator
object	UGC03957	Source name
dtcycle	0	
cycle	P	events from which exps? Prim/Second/Both
ra_targ	115.219167	Observer's specified target RA [deg]
dec_targ	55.431111	Observer's specified target Dec [deg]
ra_nom	115.16710306036	Nominal RA [deg]
dec_nom	55.454615951088	Nominal Dec [deg]
roll_nom	144.31988387219	Nominal Roll [deg]
revision	3	Processing version of data
ontime	8032.1000617743	Sum of GTIs [s]
livetime	7927.1547613211	Livetime [s]
ontime0	8032.1000617743	Sum of GTIs [s]
ontime1	8032.1000617743	Sum of GTIs [s]
ontime2	8028.9590814114	Sum of GTIs [s]
ontime3	8032.1000617743	Sum of GTIs [s]
ontime6	8032.1000617743	Sum of GTIs [s]
l2events	41137	Number of level 2 events



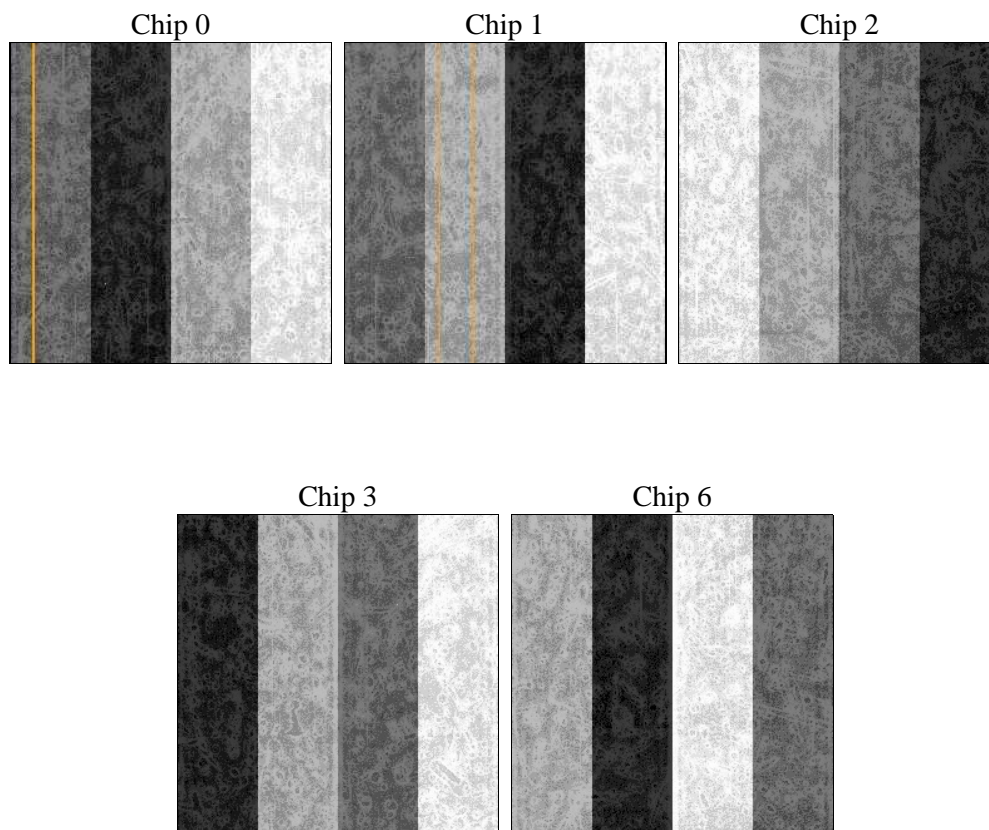
2 OBI

2.1 OBI

2.1.1 Images



2.1.2 Bias



2.1.3 Parameters

obi_num	0	Obi number	sched_exp_time	8000.000000	[s] Scheduled observation exposure time
ascdsver	8.4.3.1	Processing system revision	ontime	8032.1000617743	Sum of GTIs [s]
caldsver	4.4.9	 	ontime0	8032.1000617743	Sum of GTIs [s]
date	2012-04-16T04:08:08	Date and time of file creation	ontime1	8032.1000617743	Sum of GTIs [s]
revision	3	Processing version of data	ontime2	8028.9590814114	Sum of GTIs [s]
			ontime3	8032.1000617743	Sum of GTIs [s]
			ontime6	8032.1000617743	Sum of GTIs [s]
			l1events	307210	Number of level 1 events

2.1.4 Events

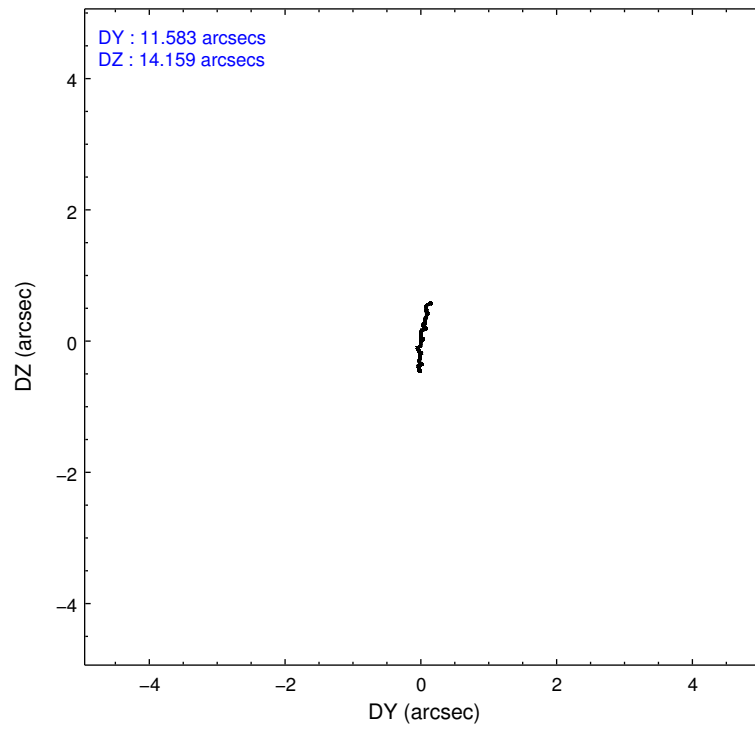
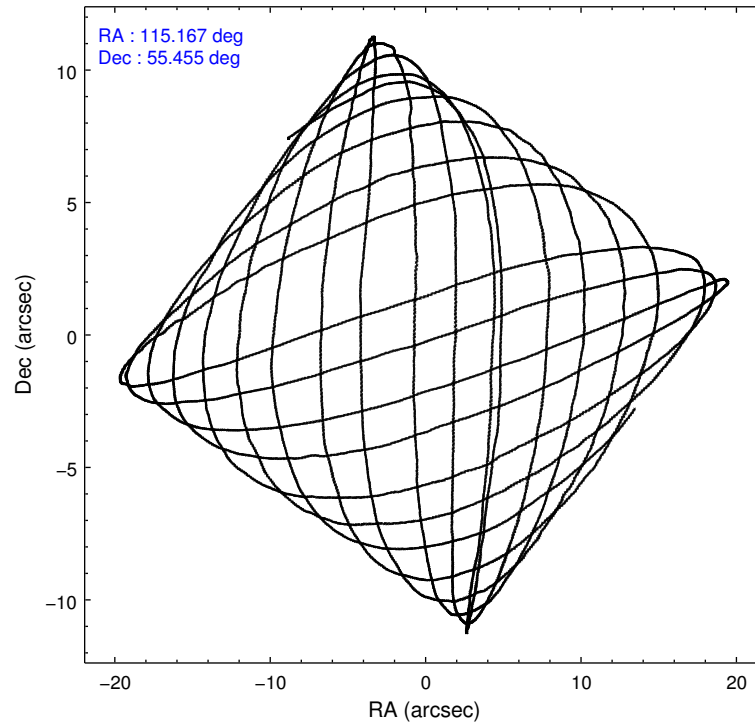
	ccd 0	ccd 1	ccd 2	ccd 3	ccd 6
level 1 events	56915	57505	62381	71811	58598
rejected events	50592	48989	55562	52772	52390
rejected %	88%	85%	89%	73%	89%

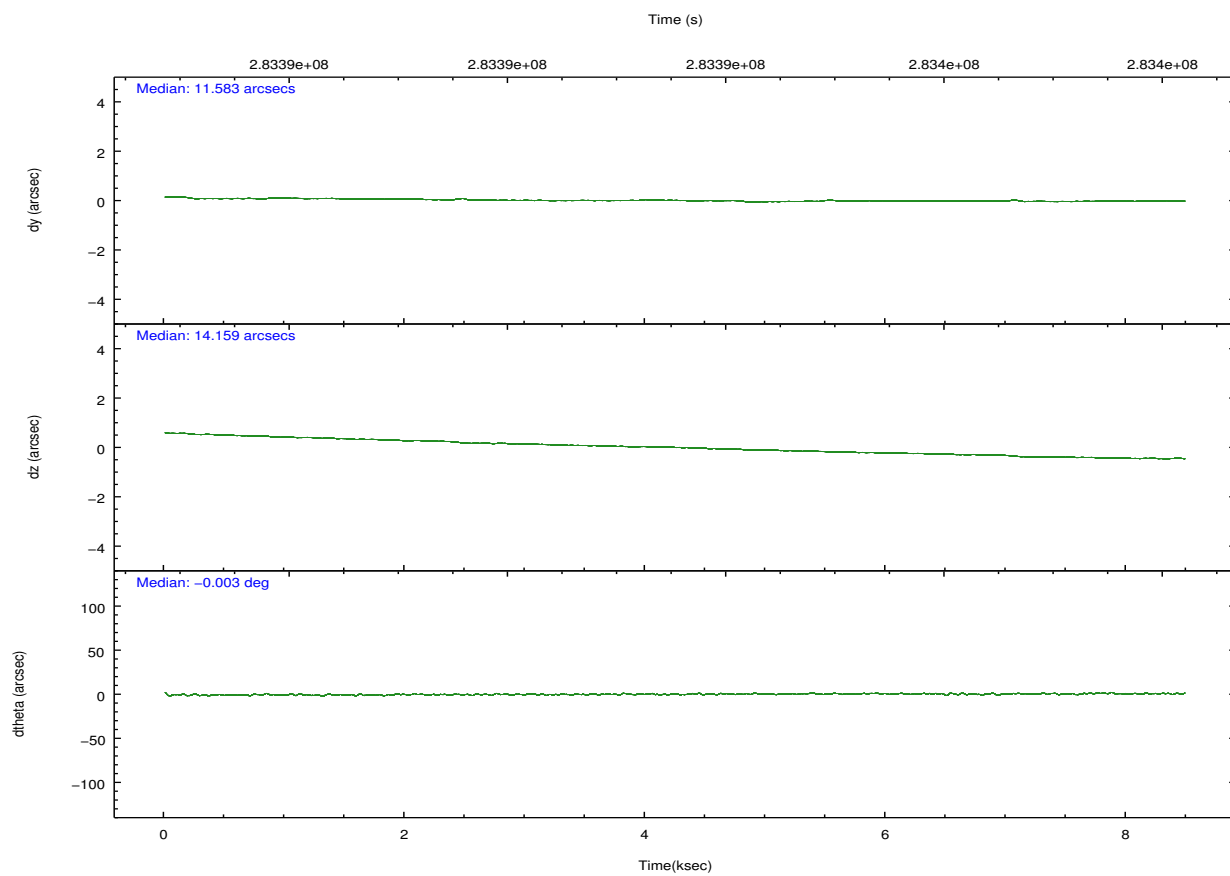
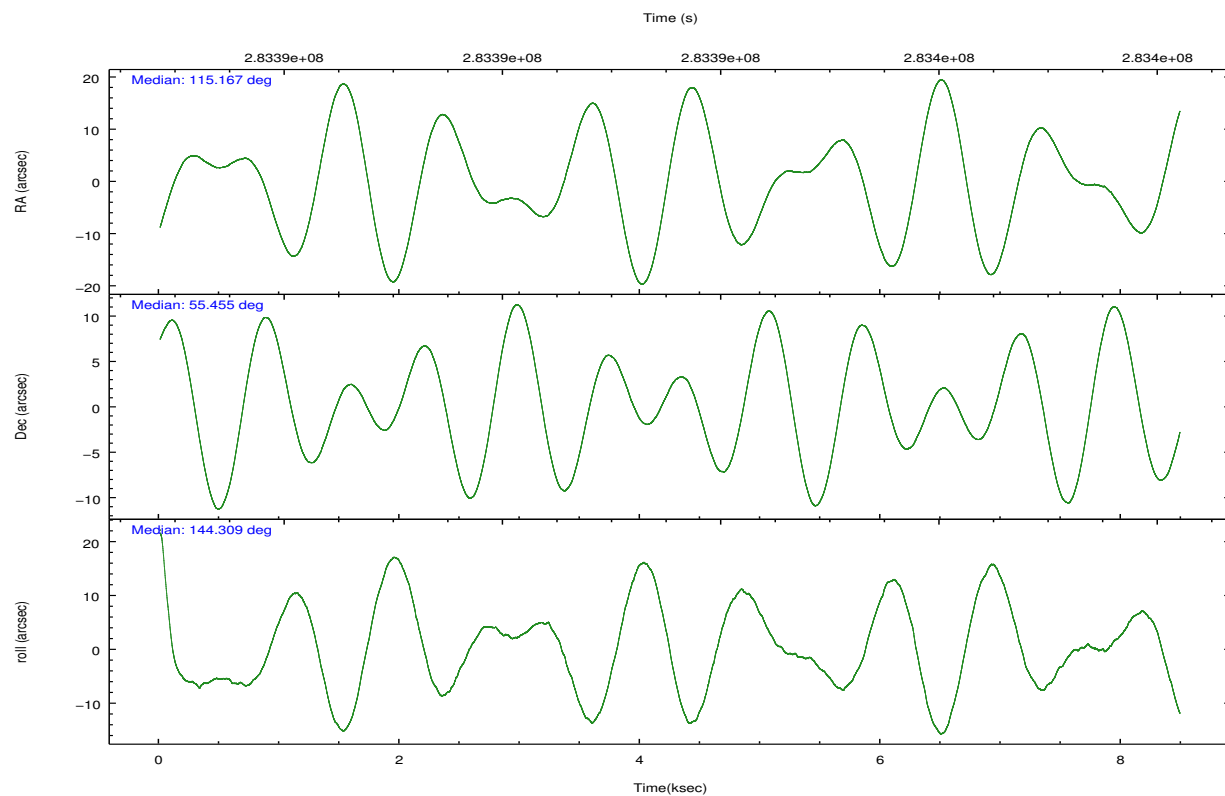
	ccd 0	ccd 1	ccd 2	ccd 3	ccd 6
grade 0 events	2510	3935	2953	13298	2236
	4%	6%	4%	18%	3%
grade 1 events	37	36	35	100	27
	0%	0%	0%	0%	0%
grade 2 events	1405	1647	1441	2440	1321
	2%	2%	2%	3%	2%
grade 3 events	656	774	623	993	657
	1%	1%	0%	1%	1%
grade 4 events	637	781	721	969	694
	1%	1%	1%	1%	1%
grade 5 events	2080	2293	1975	2392	2357
	3%	3%	3%	3%	4%
grade 6 events	1118	1389	1082	1354	1312
	1%	2%	1%	1%	2%
grade 7 events	48472	46650	53551	50265	49994
	85%	81%	85%	69%	85%

2.2 Compared Parameters

Parameter	Planned	Actual	Parameter	Planned	Actual
Instrument	ACIS	ACIS	Obspar format version number	7	7
Detector	ACIS-01236	ACIS-01236	Obspar file type	PREDICTED	ACTUAL
Grating	NONE	NONE	Obspar update status	NONE	UPDATED
Data mode	VFAINT	VFAINT	Number of optional ACIS chips dropped	0	0
Observation mode	POINTING	POINTING	On-chip summing requested	N	N
[deg] Pointing RA	115.215386	115.1671030603624	Subarray requested	NONE	NONE
[deg] Pointing Dec	55.452008	55.45461595108759	Alternating exposures requested	N	N
[deg] Pointing Roll	144.071425	144.3198838721927	[s] Primary exposure time	0.000000	3.1
[mm] SIM focus pos	-0.782348	-0.7809083437167272			
[mm] SIM defocus	0	0.001439871863259334			
[mm] SIM translation stage pos	-228.592463	-228.5990329025337			
[mm] SIM translation stage offset	-5	-4.993420100396037			
[s] Observation start time (MET)	283389778.184000	283388642.7763			
Observation start date	2006-12-24T23:21:53	2006-12-24T23:04:02			
[s] Observation end time (MET)	283397778.184000	283398678.03927			
Observation end date	2006-12-25T01:35:13	2006-12-25T01:51:18			
Read mode	TIMED	TIMED			

2.3 Aspect



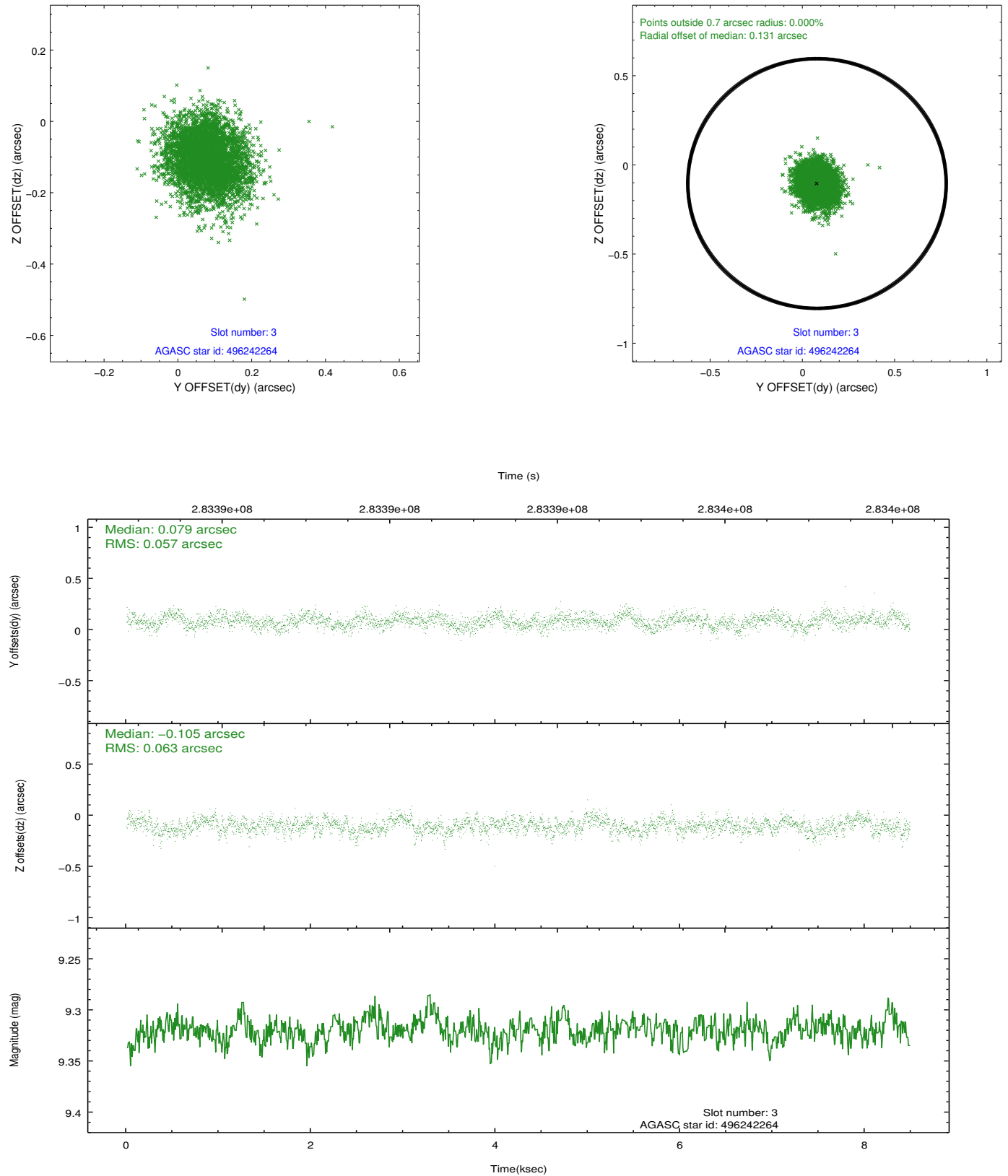


Slot Statistics

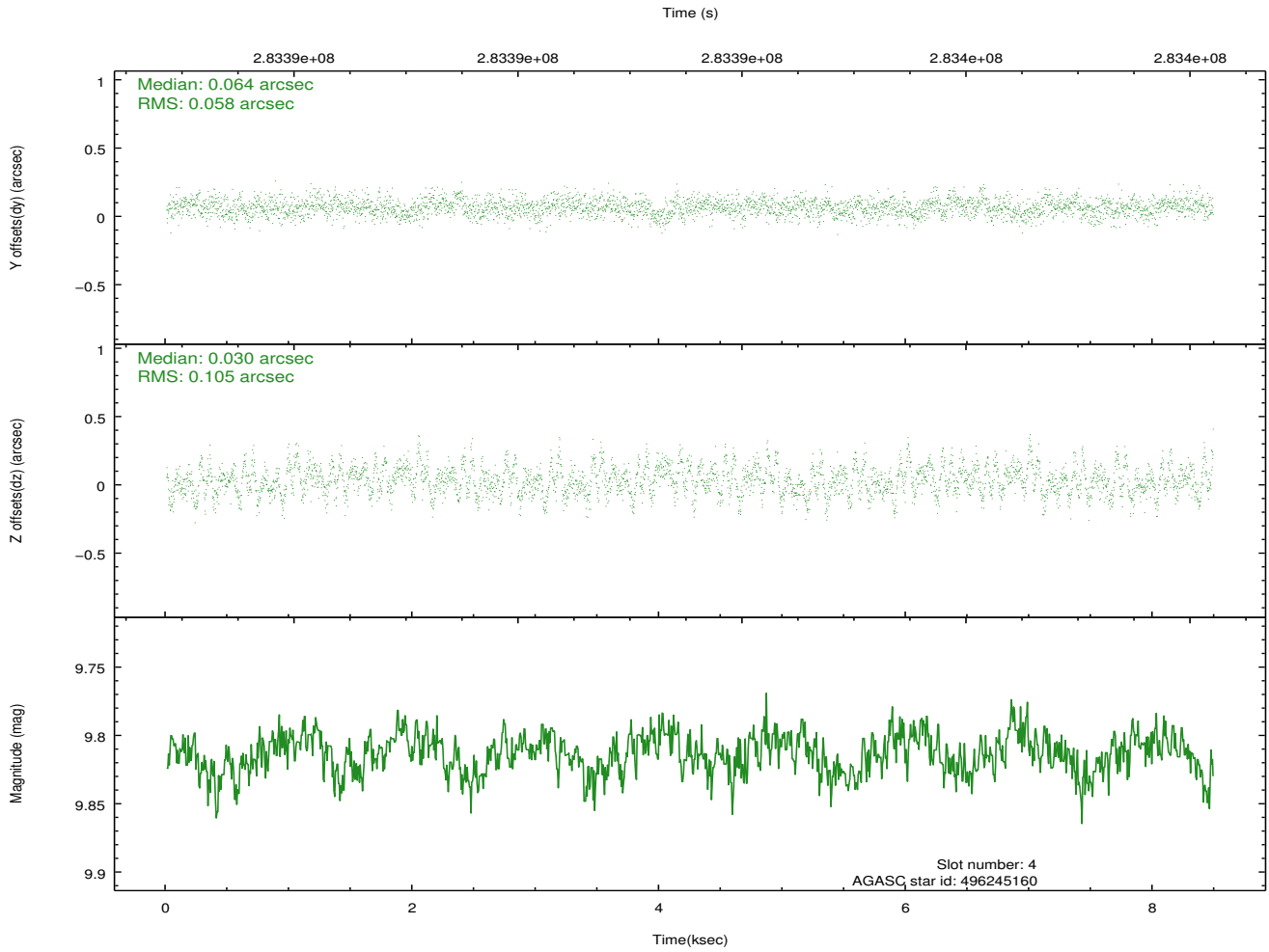
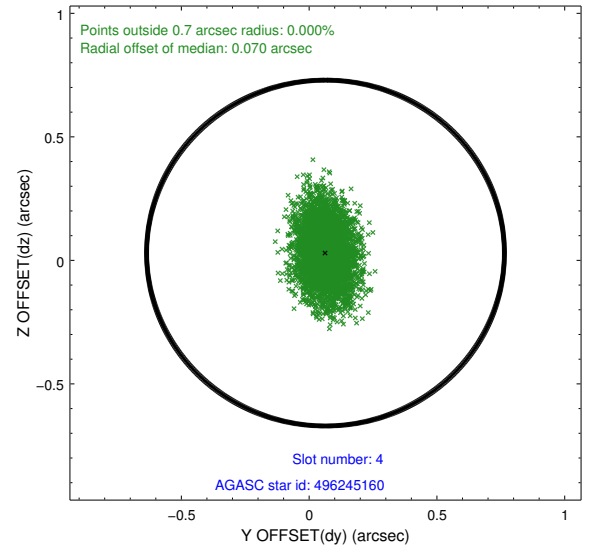
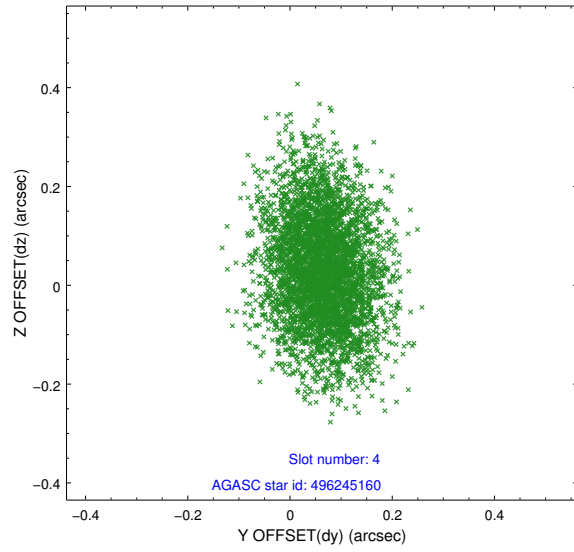
slot	status	id	mag	n_pts	med_dy	med_dz	dr1	dr2	ra	dec	mean_y	mean_z
0	FID	ACIS-I-1	7.23	2069	0.054	-0.167	0.018	0.031	0.000000	0.000000	927.93	-940.36
1	FID	ACIS-I-4	7.14	2067	0.093	0.113	0.012	0.021	0.000000	0.000000	2148.07	959.99
2	FID	ACIS-I-5	7.22	2069	-0.246	0.125	0.010	0.016	0.000000	0.000000	-1819.55	957.91
3	GUIDE	496242264	9.32	4135	0.079	-0.105	0.090	0.144	115.334729	55.945747	848.79	-1580.20
4	GUIDE	496245160	9.81	4136	0.064	0.030	0.125	0.215	115.939927	55.955073	-114.25	-2329.45
5	GUIDE	496245440	9.11	4132	0.188	-0.121	0.089	0.141	115.554690	54.650690	-2264.09	1919.53
6	GUIDE	496249752	8.13	4137	-0.196	0.129	0.070	0.112	114.583542	55.205517	532.90	1476.48
7	GUIDE	496377992	6.86	4138	-0.136	0.066	0.049	0.080	116.751676	55.541366	-2324.27	-2124.25

2.4 Star Slots

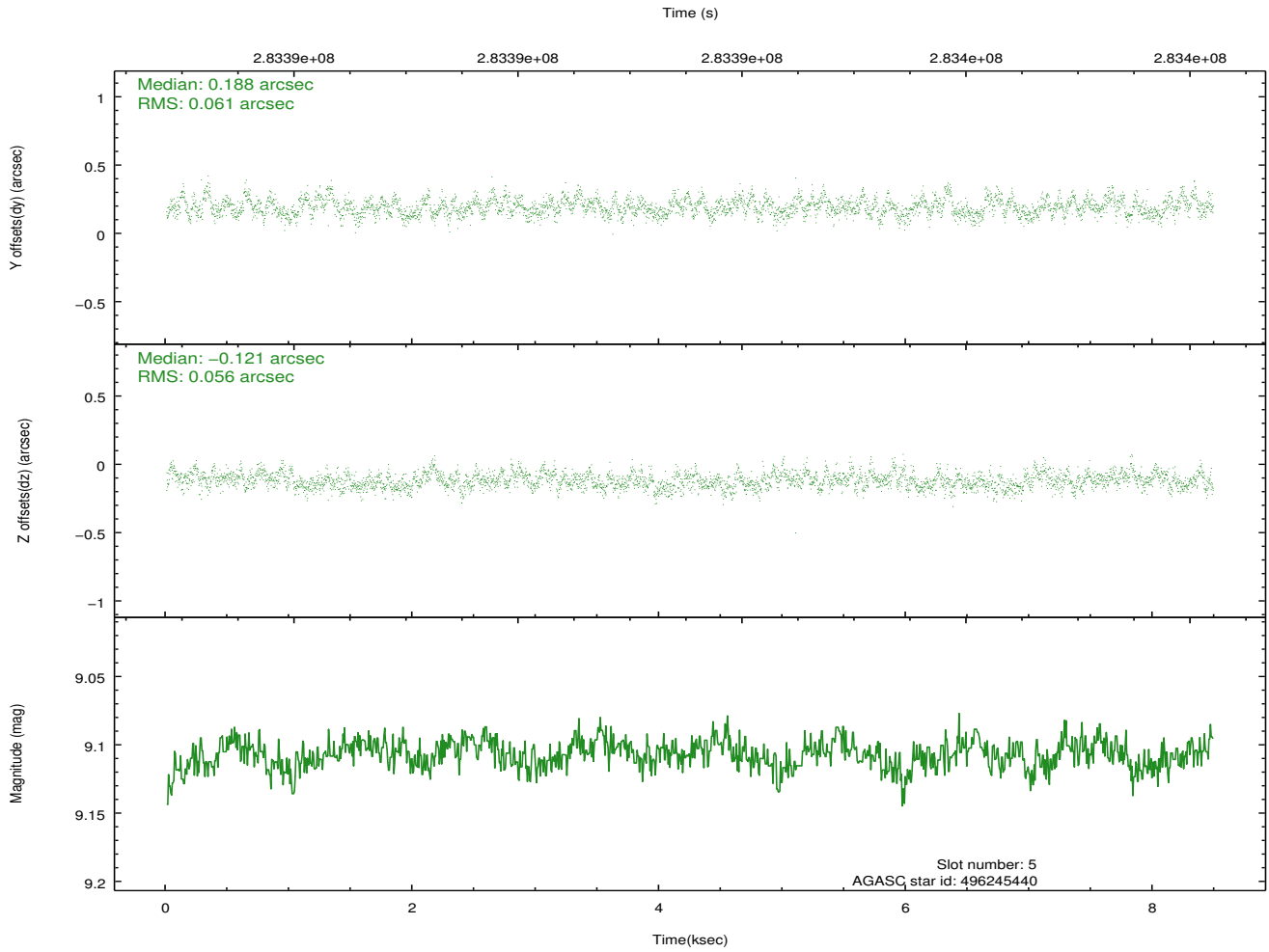
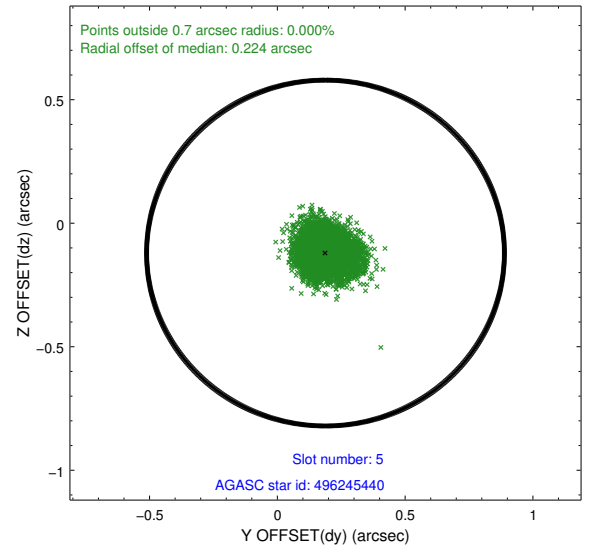
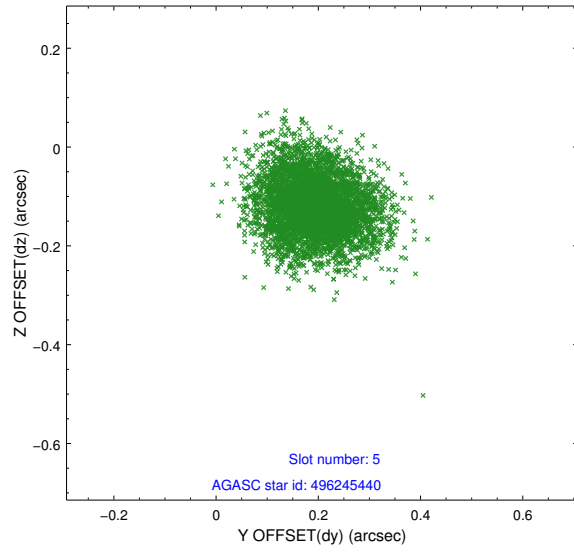
2.4.1 Slot 3



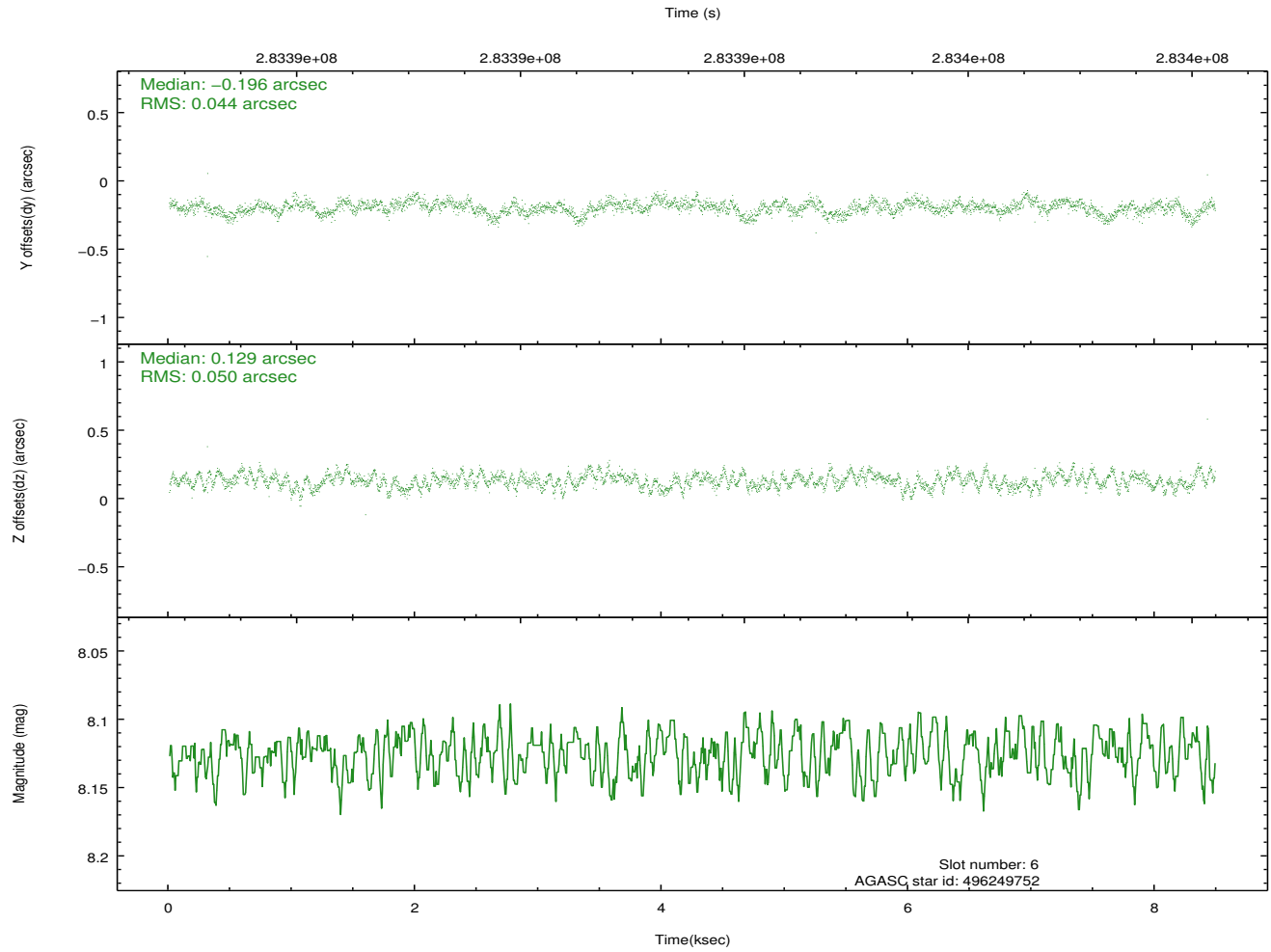
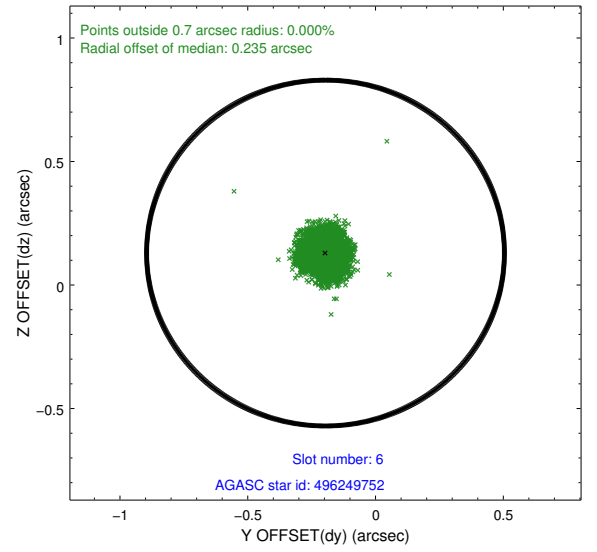
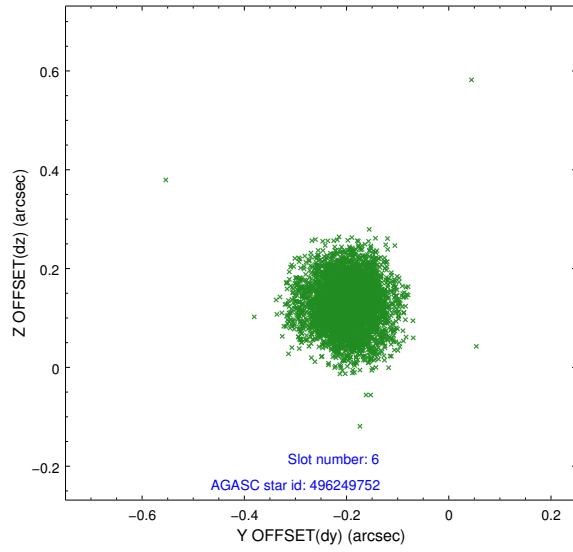
2.4.2 Slot 4



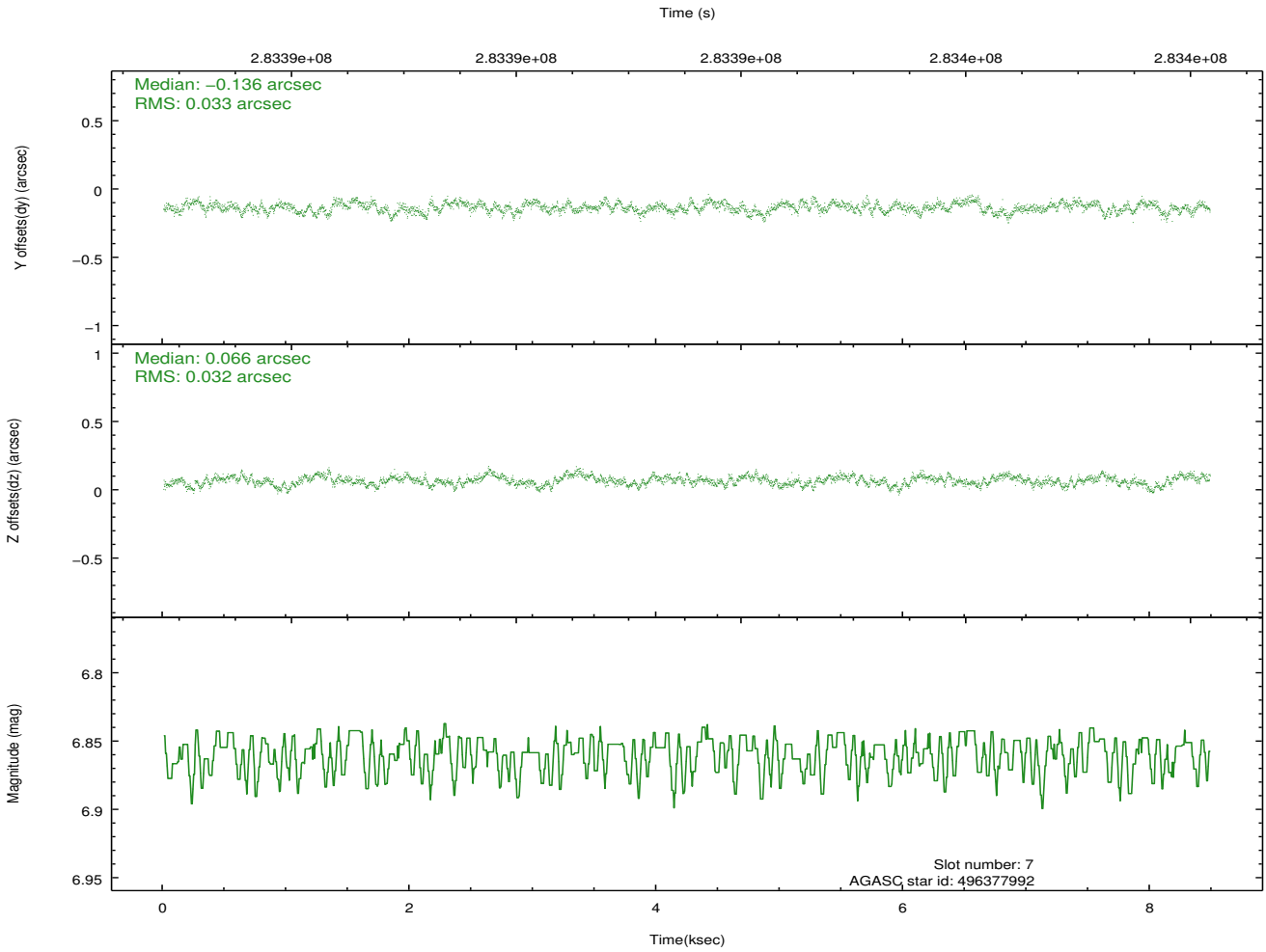
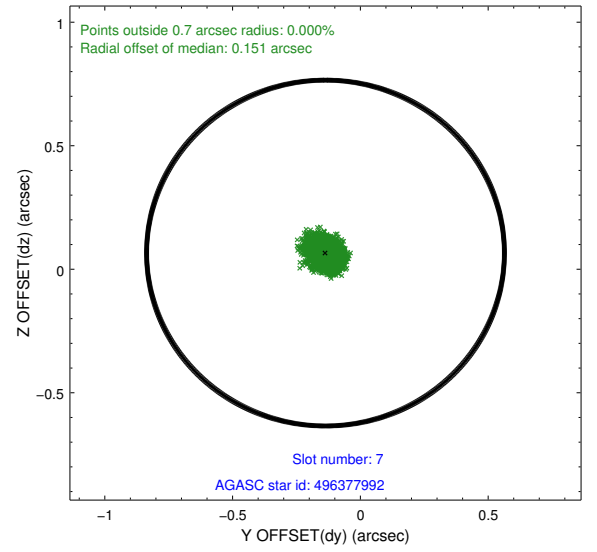
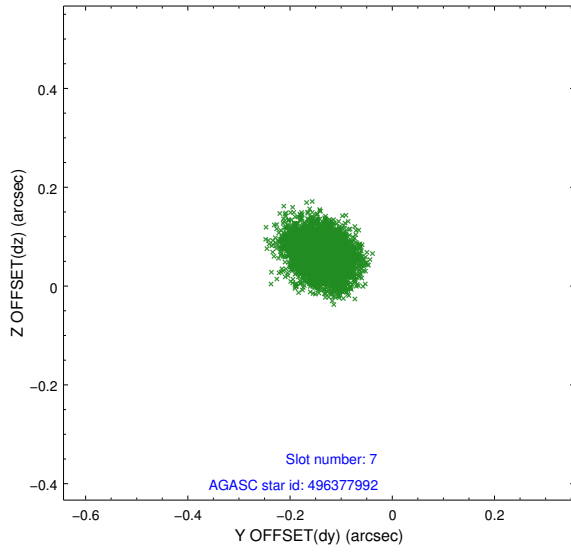
2.4.3 Slot 5



2.4.4 Slot 6

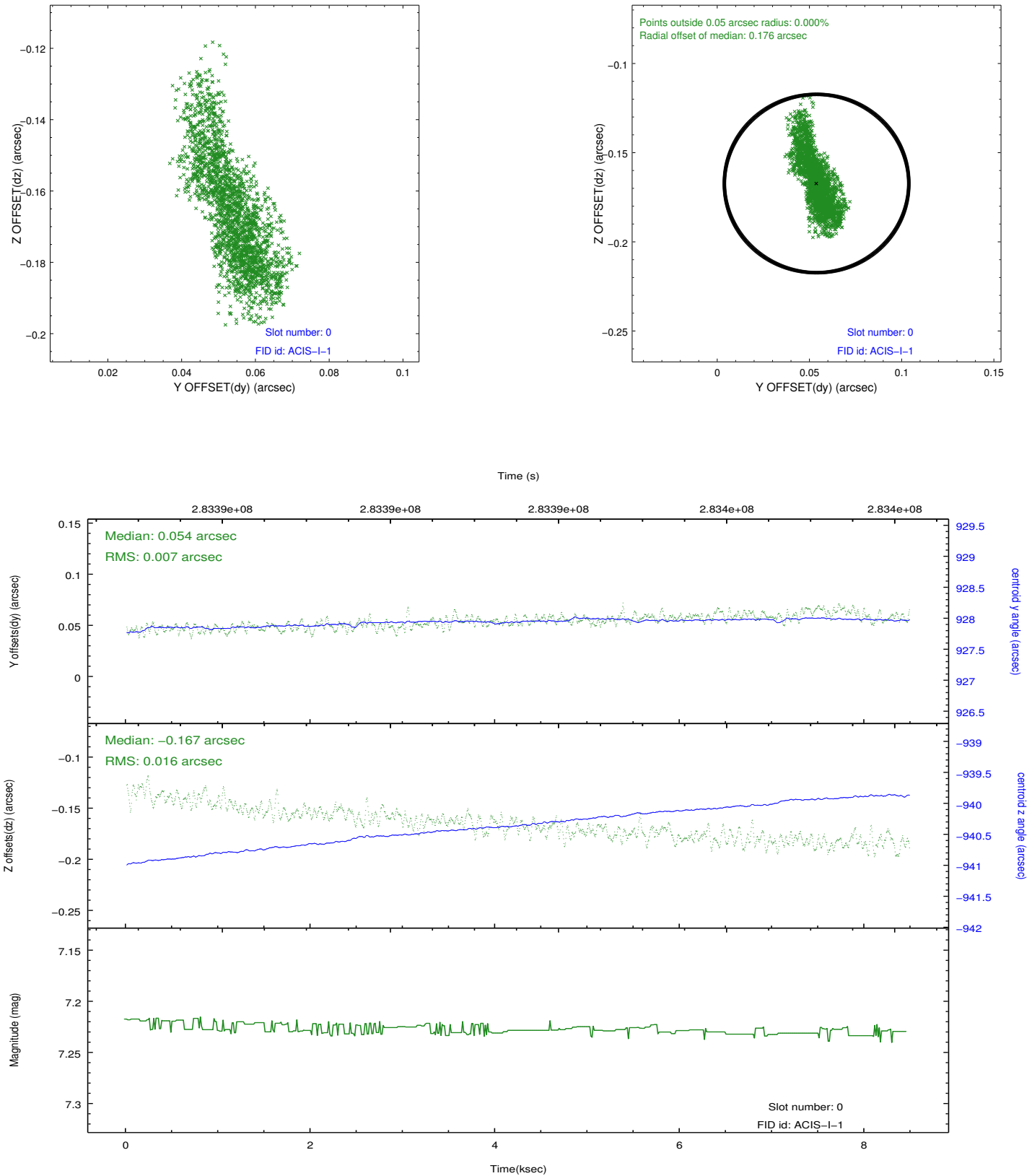


2.4.5 Slot 7

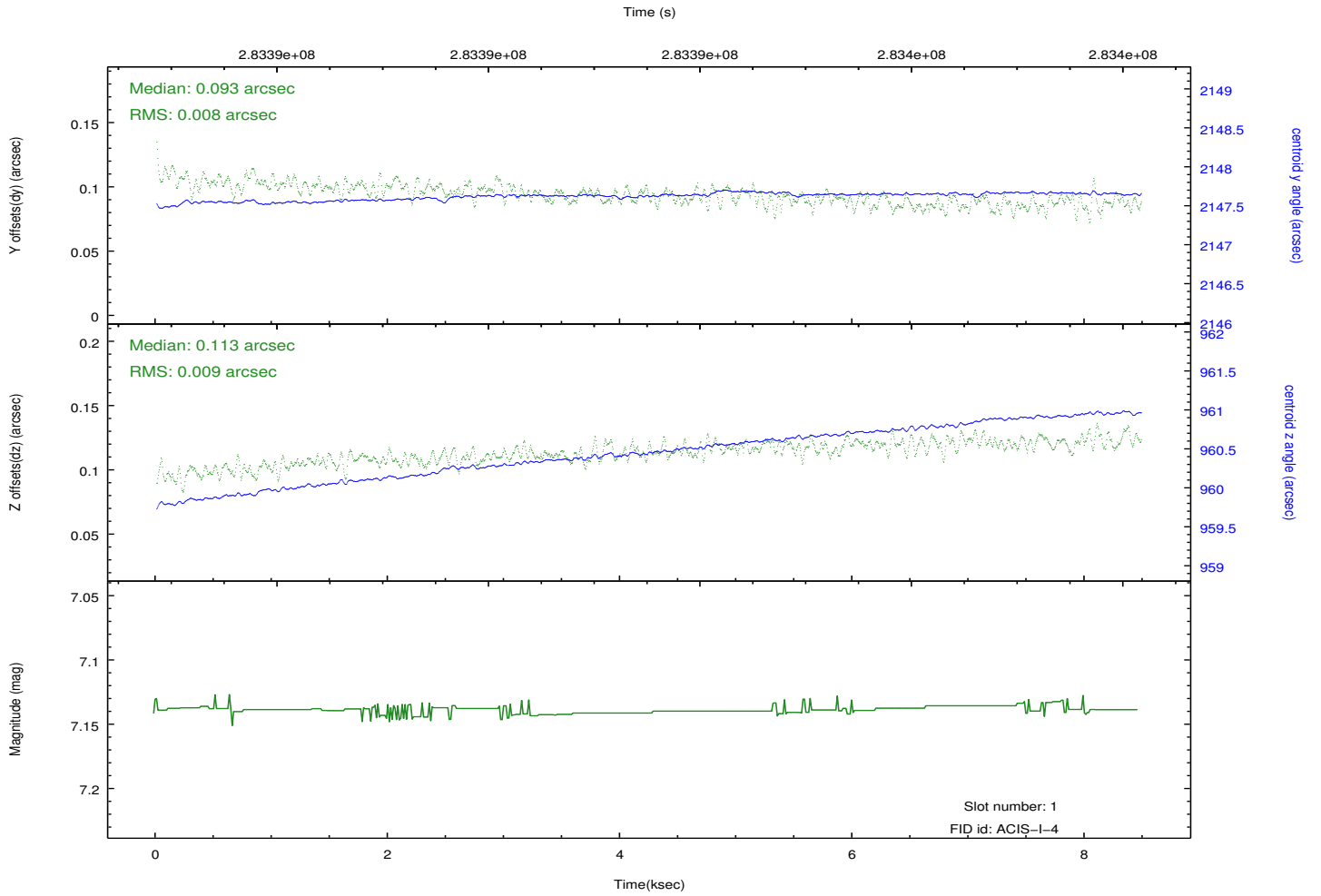
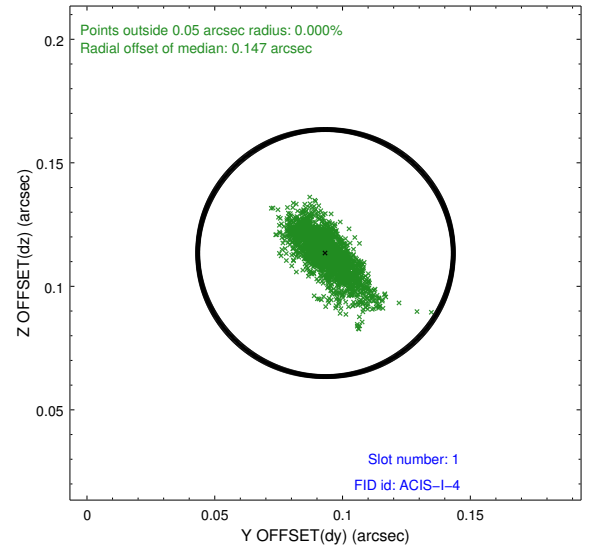
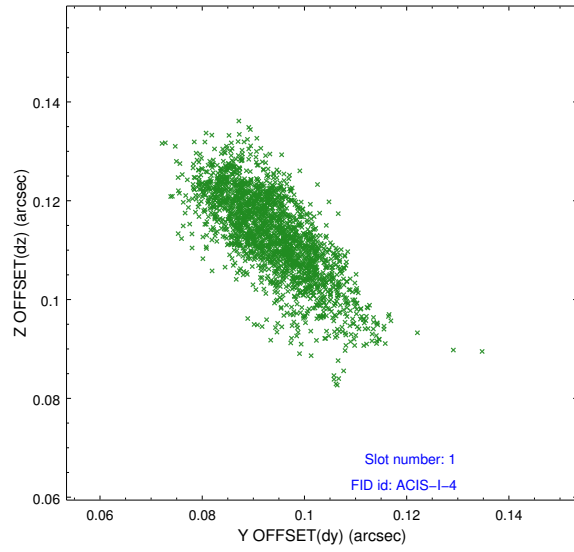


2.5 FID Slots

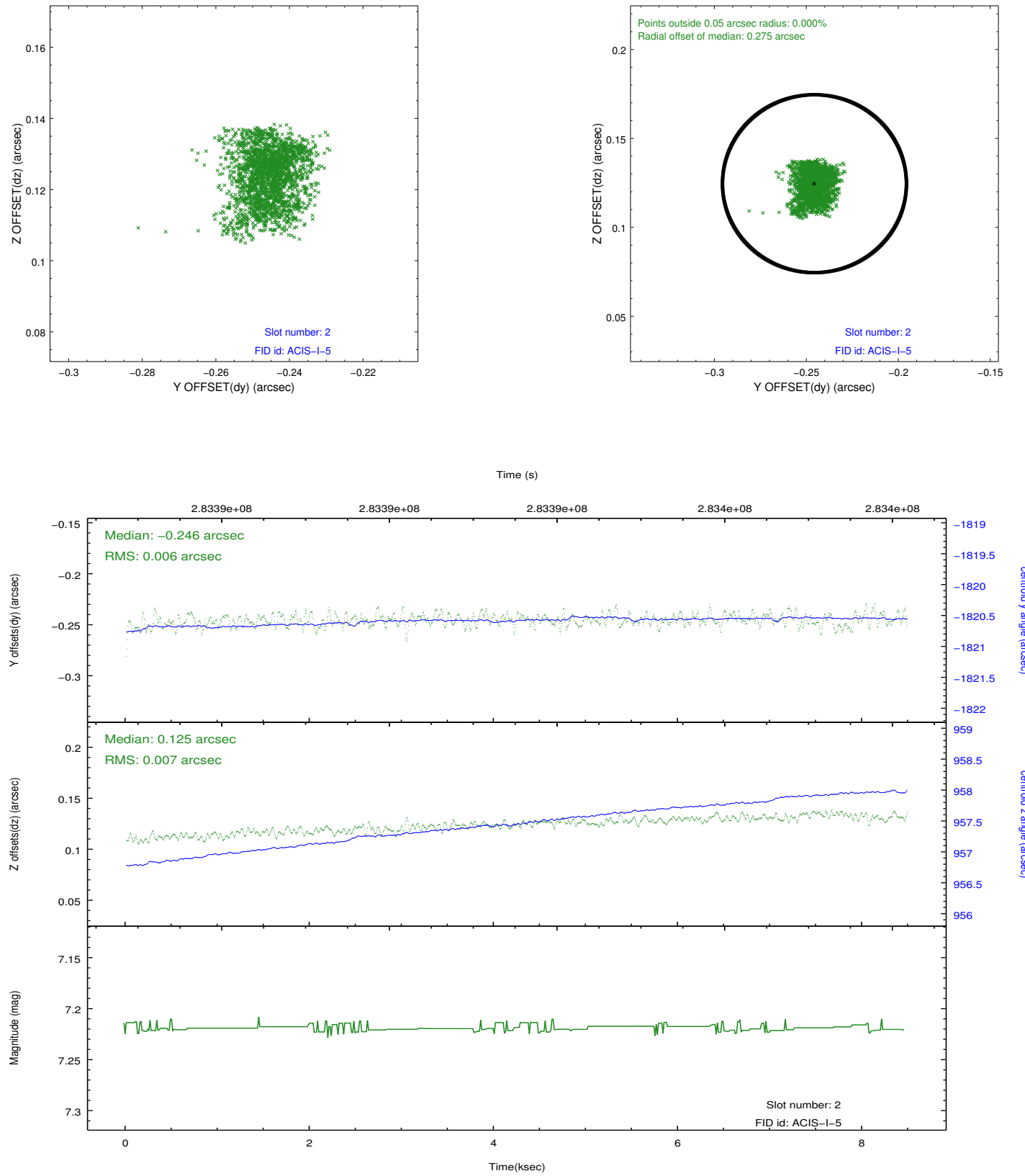
2.5.1 Slot 0



2.5.2 Slot 1



2.5.3 Slot 2



A Summary

A.1 Status

V&V Scientist	Jen Lauer
V&V Date (YYYY-MM-DD)	2012.04.18
V&V Edition	1
V&V Disposition and Status	OK
V&V Charge Time	8.03210006

A.2 Comments