

V&V Reference Report

L2 ASCDS Version : 8.4.4

Observation 8245 - L2 Version 2
Chandra X-Ray Center

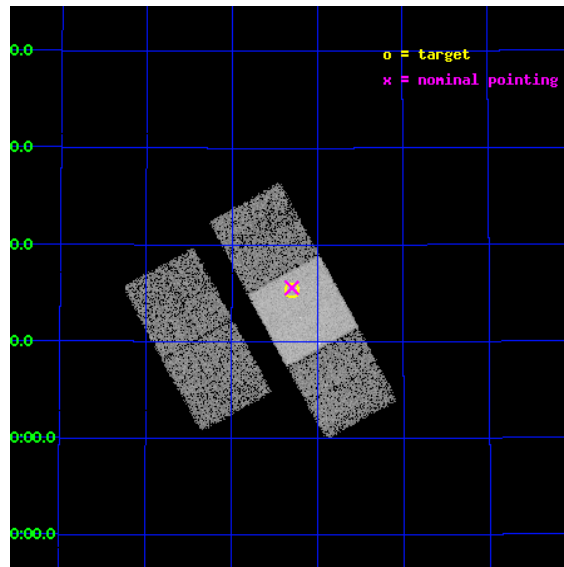
L2 Processing Date : May 1 2012

Contents

1	Front	2
2	OBI	3
2.1	OBI	3
2.1.1	Images	3
2.1.2	Bias	3
2.1.3	Parameters	4
2.1.4	Events	4
2.2	Compared Parameters	5
2.3	Aspect	6
2.4	Star Slots	9
2.4.1	Slot 3	9
2.4.2	Slot 4	10
2.4.3	Slot 5	11
2.4.4	Slot 6	12
2.4.5	Slot 7	13
2.5	FID Slots	14
2.5.1	Slot 0	14
2.5.2	Slot 1	15
2.5.3	Slot 2	16
A	Summary	17
A.1	Status	17
A.2	Comments	17

1 Front

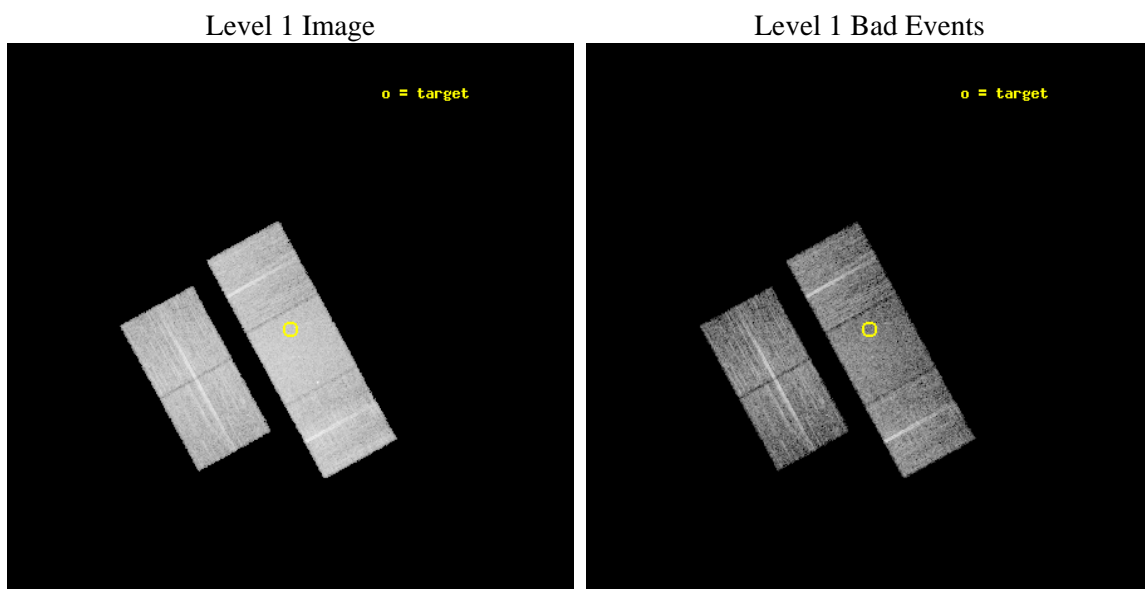
seq_num	701560	Sequence number
obs_id	8245	Observation id
title	A snapshot X-ray/radio survey of AGNs selected from the long menu of SDSS galaxies	Proposal title
observer	Dr. Sebastian Heinz	Principal investigator
object	2MASX J083717+531517	Source name
dtcycle	0	
cycle	P	events from which exps? Prim/Second/Both
ra_targ	129.325	Observer's specified target RA [deg]
dec_targ	53.2547	Observer's specified target Dec [deg]
ra_nom	129.32459213856	Nominal RA [deg]
dec_nom	53.259574931797	Nominal Dec [deg]
roll_nom	61.301435854101	Nominal Roll [deg]
revision	2	Processing version of data
ontime	7029.7455489039	Sum of GTIs [s]
livetime	6937.8967480841	Livetime [s]
ontime2	7026.4403986931	Sum of GTIs [s]
ontime3	7026.522608161	Sum of GTIs [s]
ontime6	7026.5635386109	Sum of GTIs [s]
ontime7	7029.7455489039	Sum of GTIs [s]
ontime8	7029.622428894	Sum of GTIs [s]
l2events	68438	Number of level 2 events



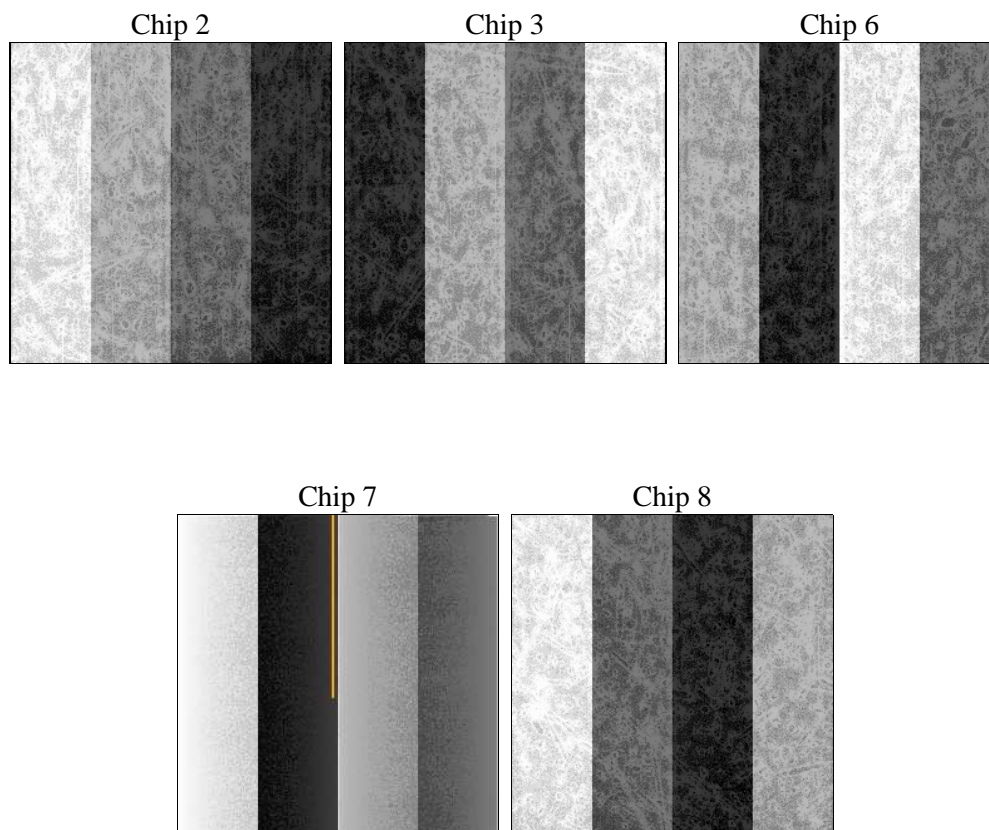
2 OBI

2.1 OBI

2.1.1 Images



2.1.2 Bias



2.1.3 Parameters

obi_num	1	Obi number	sched_exp_time	7000.000000	[s] Scheduled observation exposure time
ascdsver	8.4.4	Processing system revision	ontime	7029.7455489039	Sum of GTIs [s]
caldsver	4.4.9	 	ontime2	7026.4403986931	Sum of GTIs [s]
date	2012-05-01T22:35:50	Date and time of file creation	ontime3	7026.522608161	Sum of GTIs [s]
revision	2	Processing version of data	ontime6	7026.5635386109	Sum of GTIs [s]
			ontime7	7029.7455489039	Sum of GTIs [s]
			ontime8	7029.622428894	Sum of GTIs [s]
			l1events	384441	Number of level 1 events

2.1.4 Events

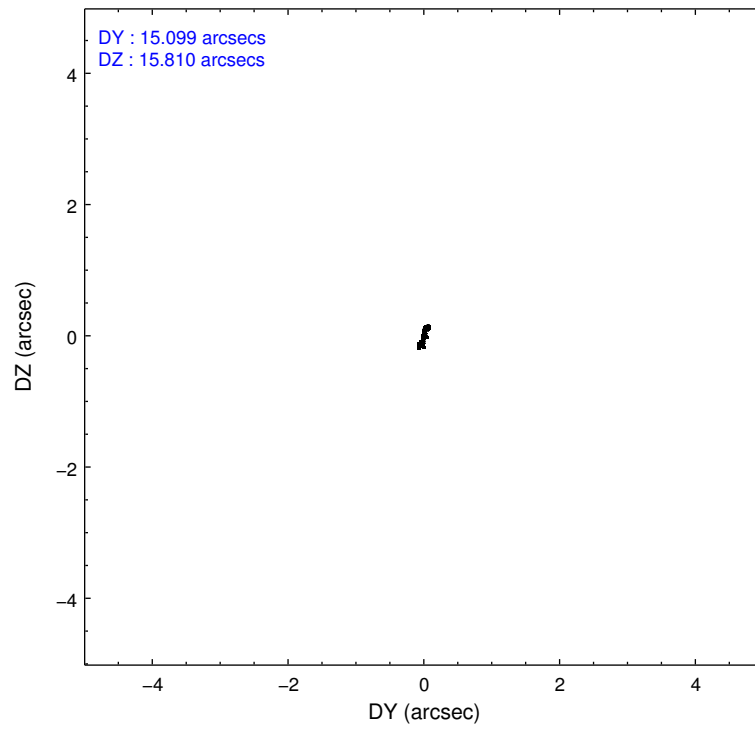
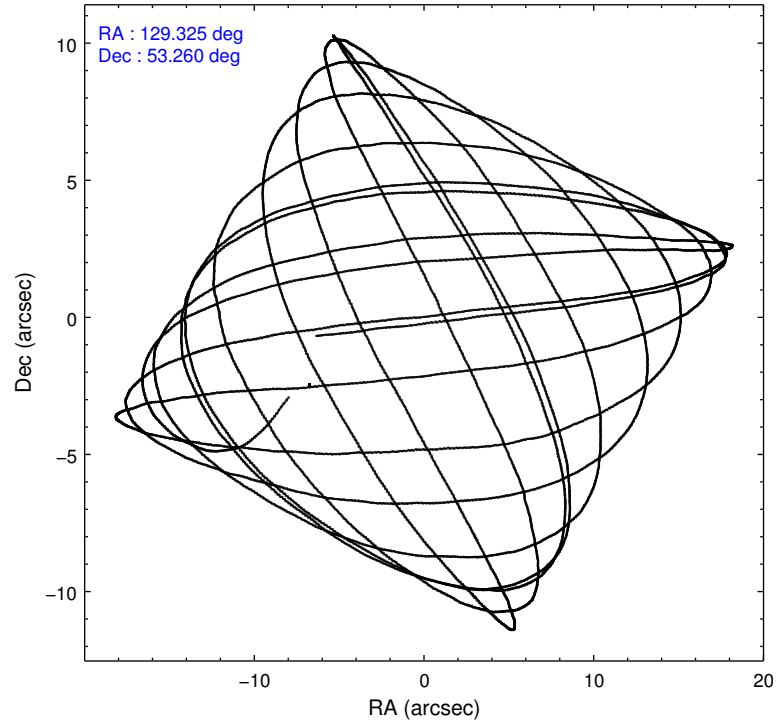
	ccd 2	ccd 3	ccd 6	ccd 7	ccd 8
level 1 events	69489	65725	69156	93345	86726
rejected events	60925	57693	60843	54321	66443
rejected %	87%	87%	87%	58%	76%

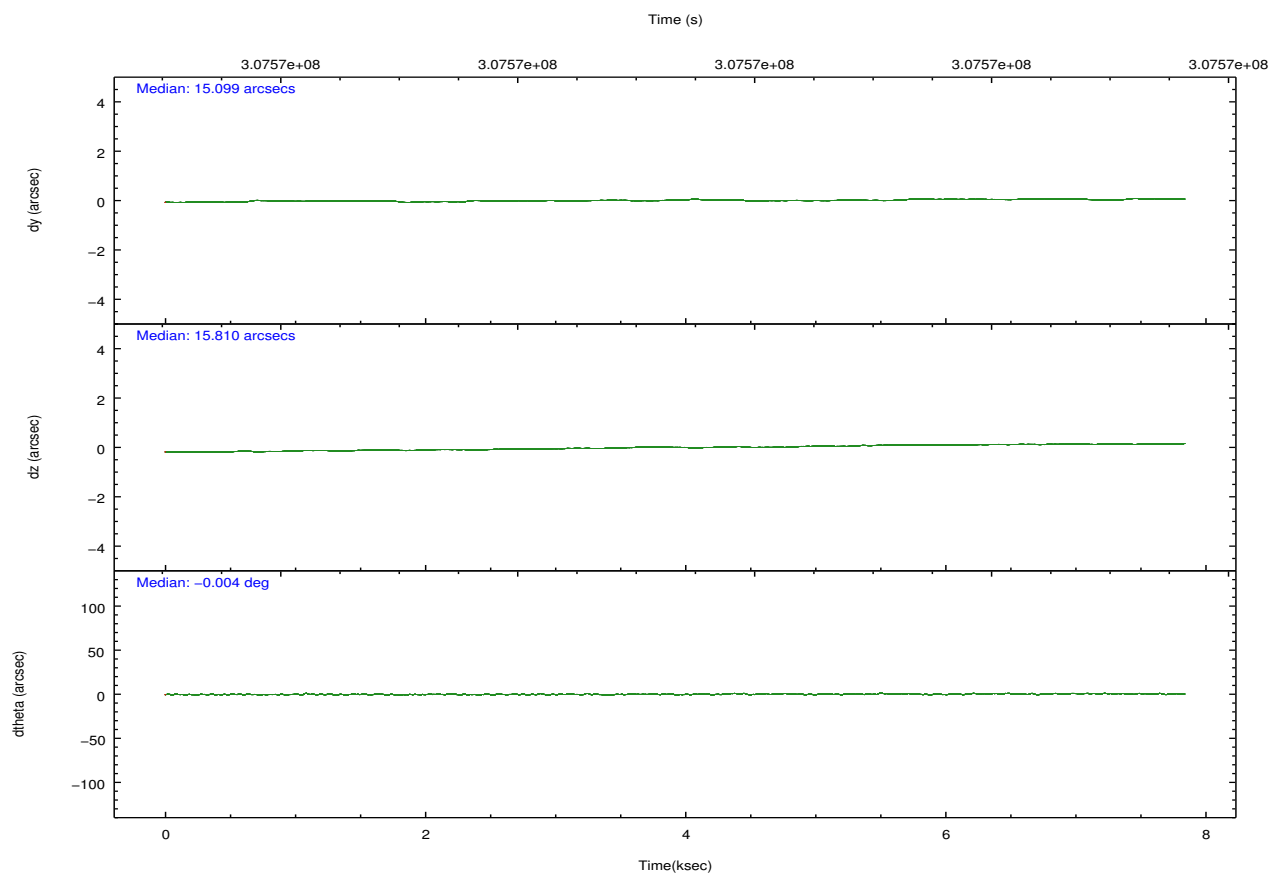
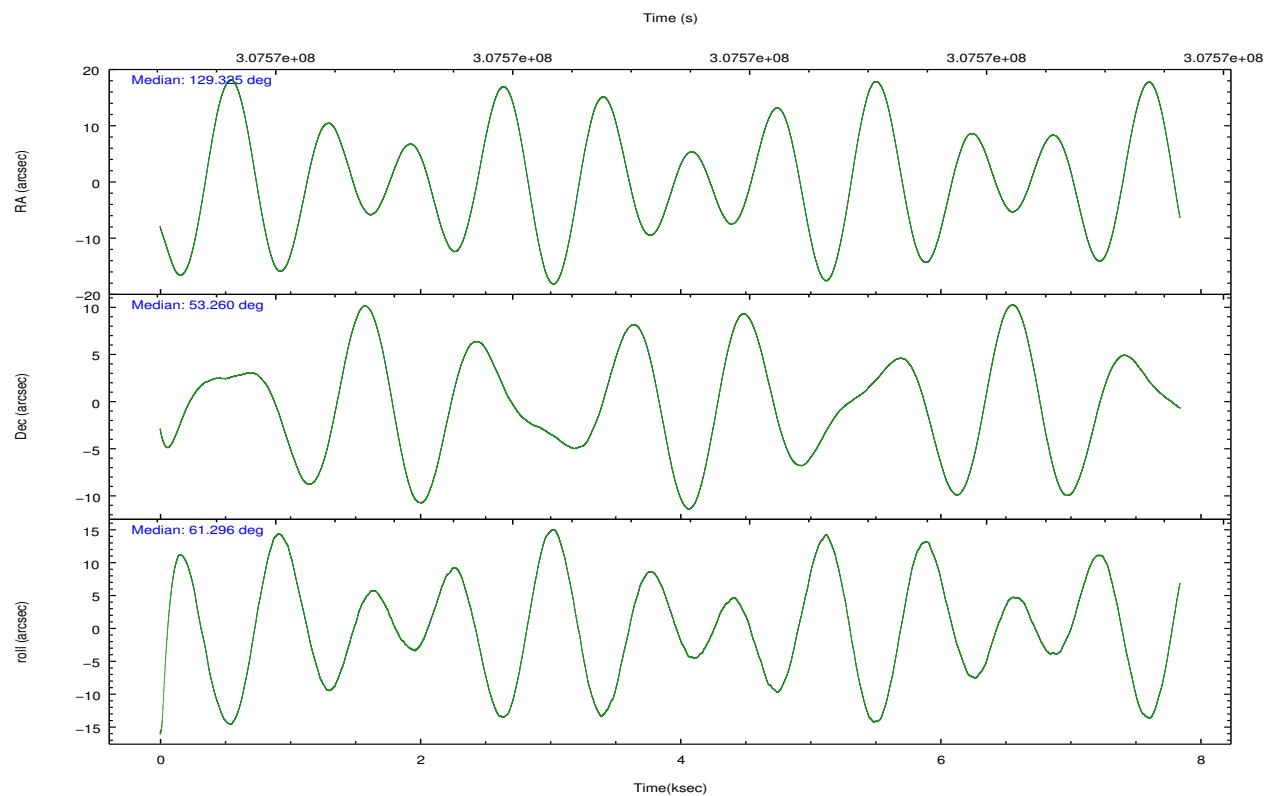
	ccd 2	ccd 3	ccd 6	ccd 7	ccd 8
grade 0 events	3977	3485	3314	3511	6284
	5%	5%	4%	3%	7%
grade 1 events	35	56	30	101	67
	0%	0%	0%	0%	0%
grade 2 events	1734	1581	1756	7947	4504
	2%	2%	2%	8%	5%
grade 3 events	783	860	762	3333	2203
	1%	1%	1%	3%	2%
grade 4 events	735	741	777	3307	2028
	1%	1%	1%	3%	2%
grade 5 events	2557	3244	3224	8843	4147
	3%	4%	4%	9%	4%
grade 6 events	1342	1370	1710	20975	5277
	1%	2%	2%	22%	6%
grade 7 events	58326	54388	57583	45328	62216
	83%	82%	83%	48%	71%

2.2 Compared Parameters

Parameter	Planned	Actual	Parameter	Planned	Actual
Instrument	ACIS	ACIS	Obspar format version number	7	7
Detector	ACIS-23678	ACIS-23678	Obspar file type	PREDICTED	ACTUAL
Grating	NONE	NONE	Obspar update status	NONE	UPDATED
Data mode	VFAINT	VFAINT	CCD I0 on	N	N
Observation mode	POINTING	POINTING	CCD I1 on	N	N
[deg] Pointing RA	129.326238	129.3245921385597	CCD I2 on	O1	Y
[deg] Pointing Dec	53.232206	53.25957493179705	CCD I3 on	O2	Y
[deg] Pointing Roll	61.143519	61.3014358541011	CCD S0 on	N	N
[mm] SIM focus pos	-0.684267	-0.6828225247311905	CCD S1 on	N	N
[mm] SIM defocus	0	0.001444936568705701	CCD S2 on	O4	Y
[mm] SIM translation stage pos	-190.132523	-190.1400660498719	CCD S3 on	Y	Y
[mm] SIM translation stage offset	0	0.00754346686406393	CCD S4 on	O3	Y
[s] Observation start time (MET)	307566246.184000	307564990.93065	CCD S5 on	N	N
Observation start date	2007-09-30T19:03:01	2007-09-30T18:43:10	Number of optional ACIS chips dropped	0	0
[s] Observation end time (MET)	307573246.184000	307574693.06861	On-chip summing requested	N	N
Observation end date	2007-09-30T20:59:41	2007-09-30T21:24:53	Subarray requested	NONE	NONE
Read mode	TIMED	TIMED	Alternating exposures requested	N	N
			[s] Primary exposure time	0.000000	3.1

2.3 Aspect



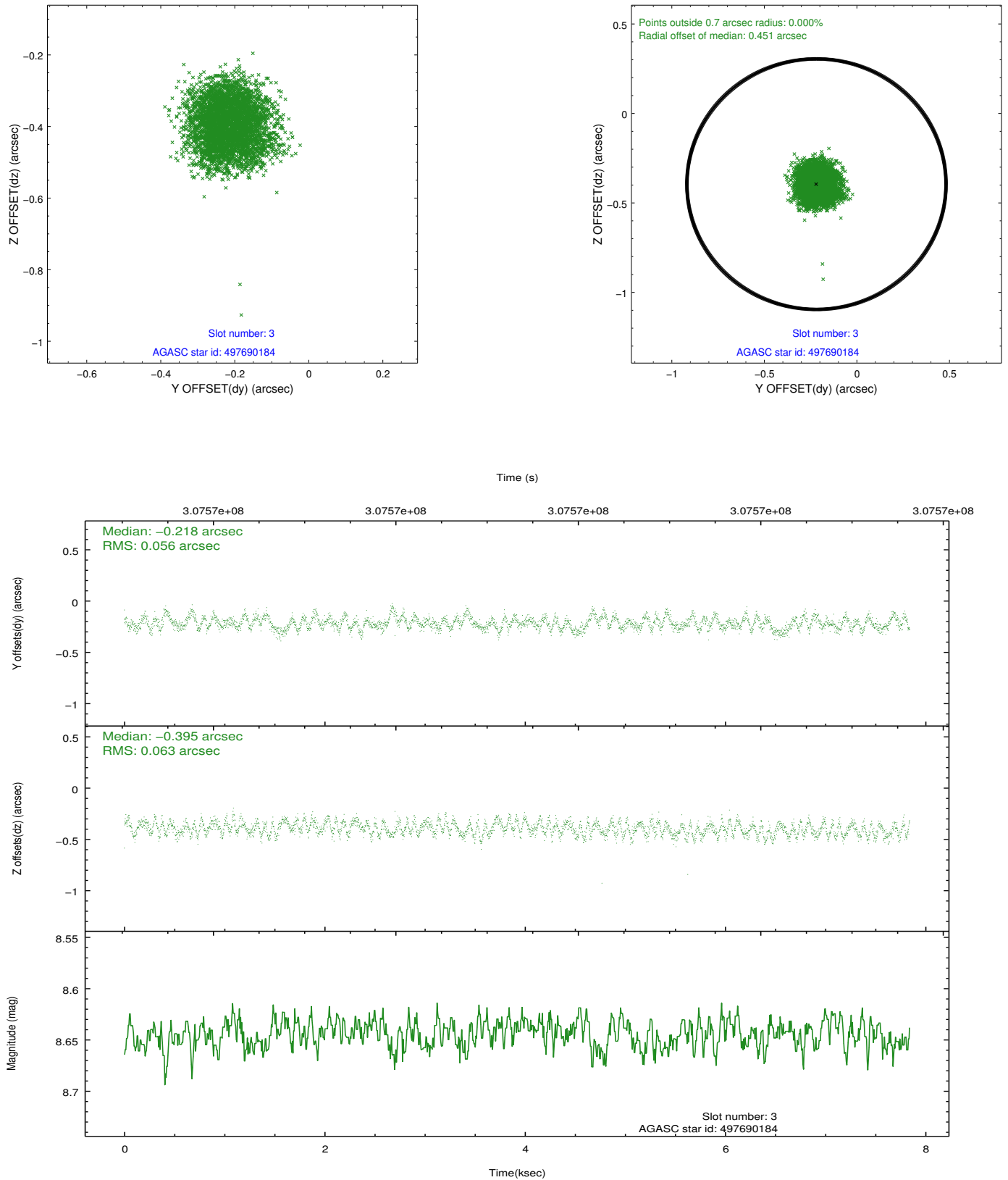


Slot Statistics

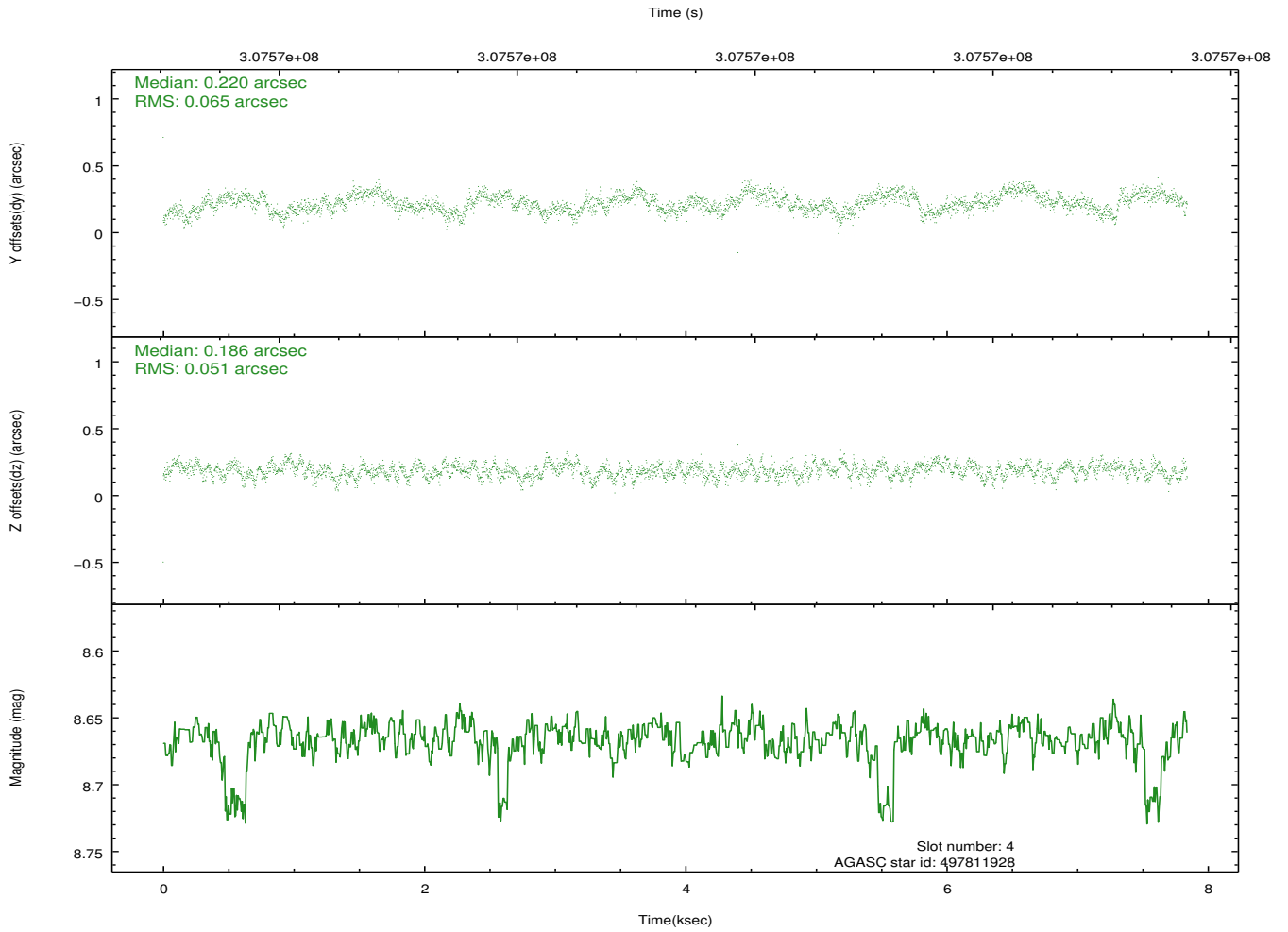
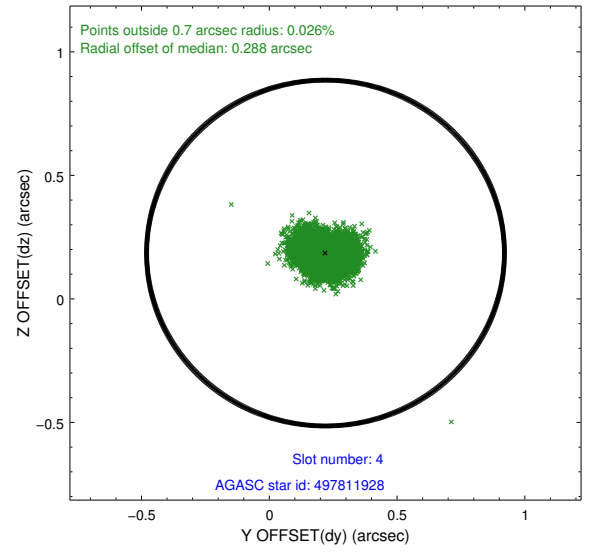
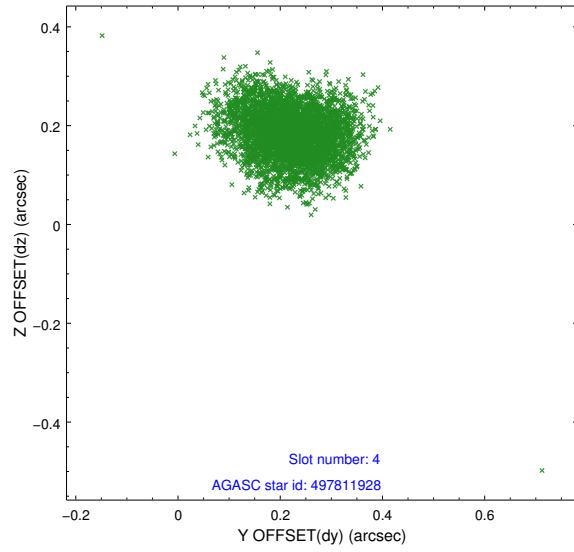
slot	status	id	mag	n_pts	med_dy	med_dz	dr1	dr2	ra	dec	mean_y	mean_z
0	FID	ACIS-S-2	7.08	1913	-0.093	-0.016	0.009	0.015	0.000000	0.000000	-768.17	-1737.21
1	FID	ACIS-S-4	7.18	1913	0.197	0.049	0.015	0.026	0.000000	0.000000	2145.06	170.58
2	FID	ACIS-S-5	7.21	1913	-0.133	-0.025	0.012	0.020	0.000000	0.000000	-1820.13	165.00
3	GUIDE	497690184	8.64	3824	-0.218	-0.395	0.091	0.139	128.443590	53.619311	320.82	2328.58
4	GUIDE	497811928	8.67	3824	0.220	0.186	0.088	0.137	129.272866	52.607871	-2024.52	-981.92
5	GUIDE	497813312	9.24	3823	0.234	0.141	0.091	0.145	129.393764	52.721882	-1538.04	-1015.78
6	GUIDE	497815152	8.71	3826	-0.147	0.270	0.079	0.129	130.515126	53.330771	1562.69	-2056.82
7	GUIDE	497816312	8.18	3825	-0.089	-0.198	0.065	0.103	129.667637	53.722879	1899.92	215.95

2.4 Star Slots

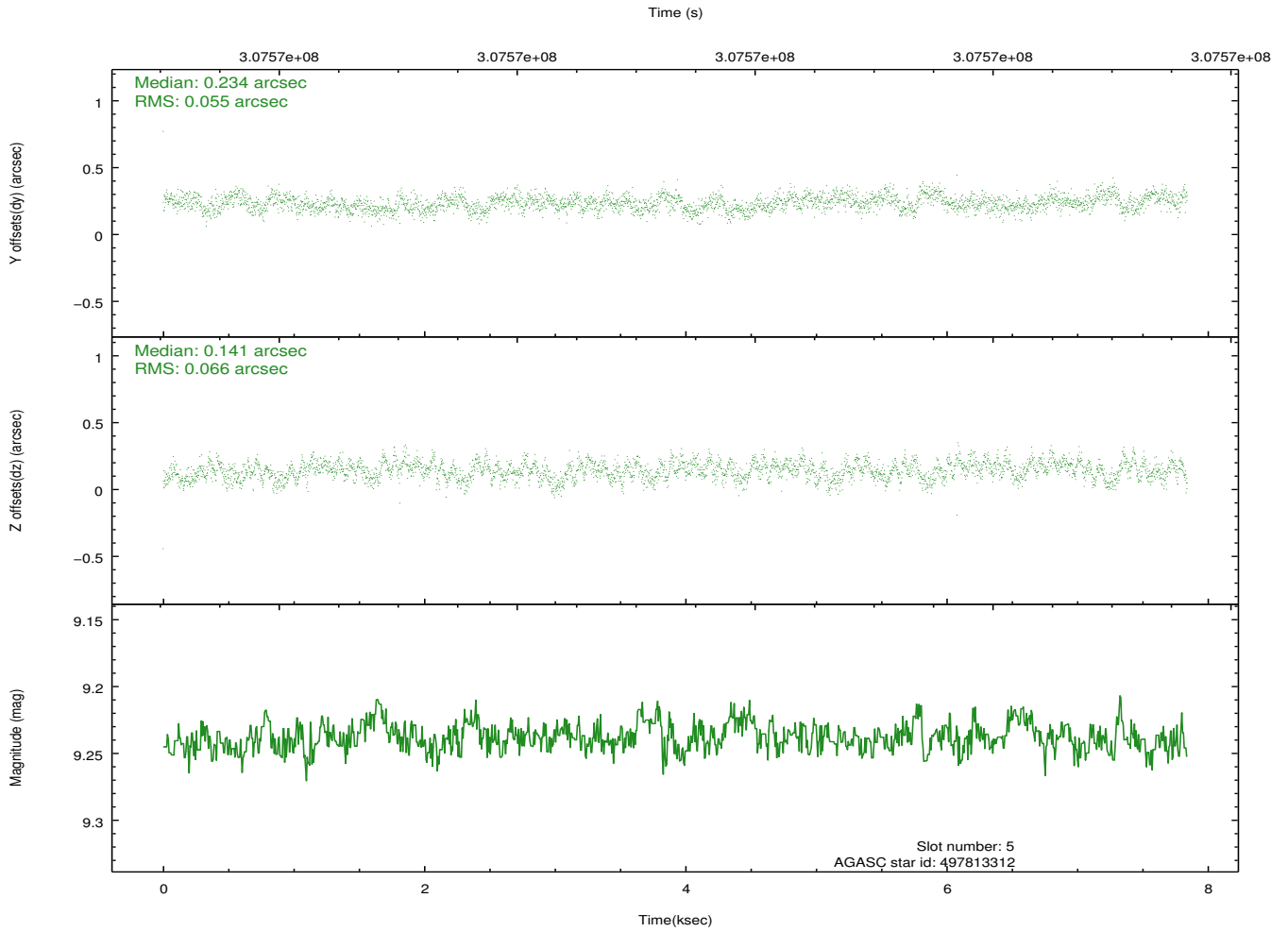
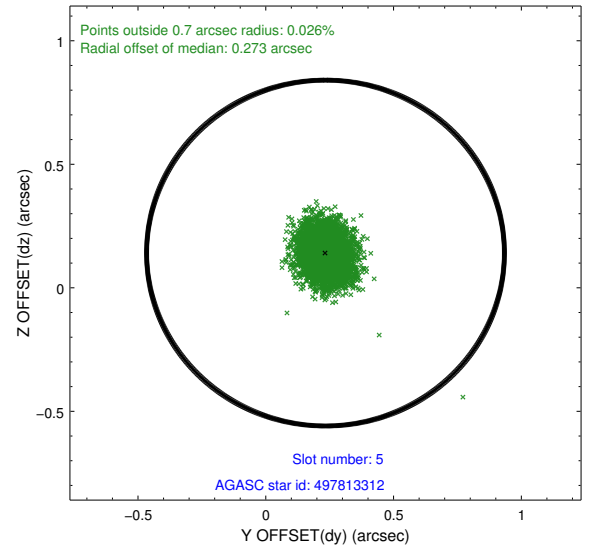
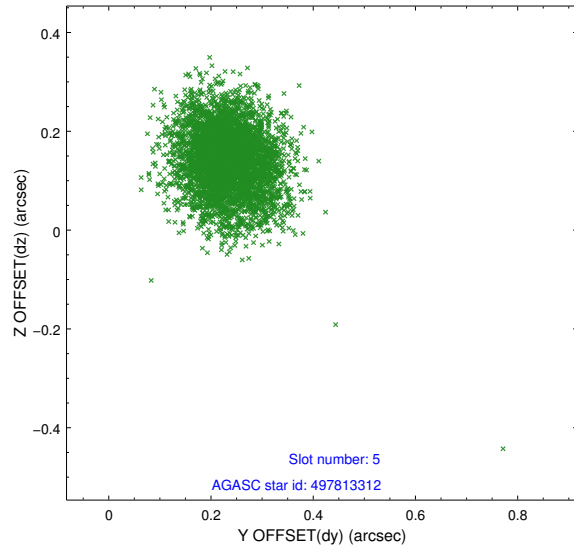
2.4.1 Slot 3



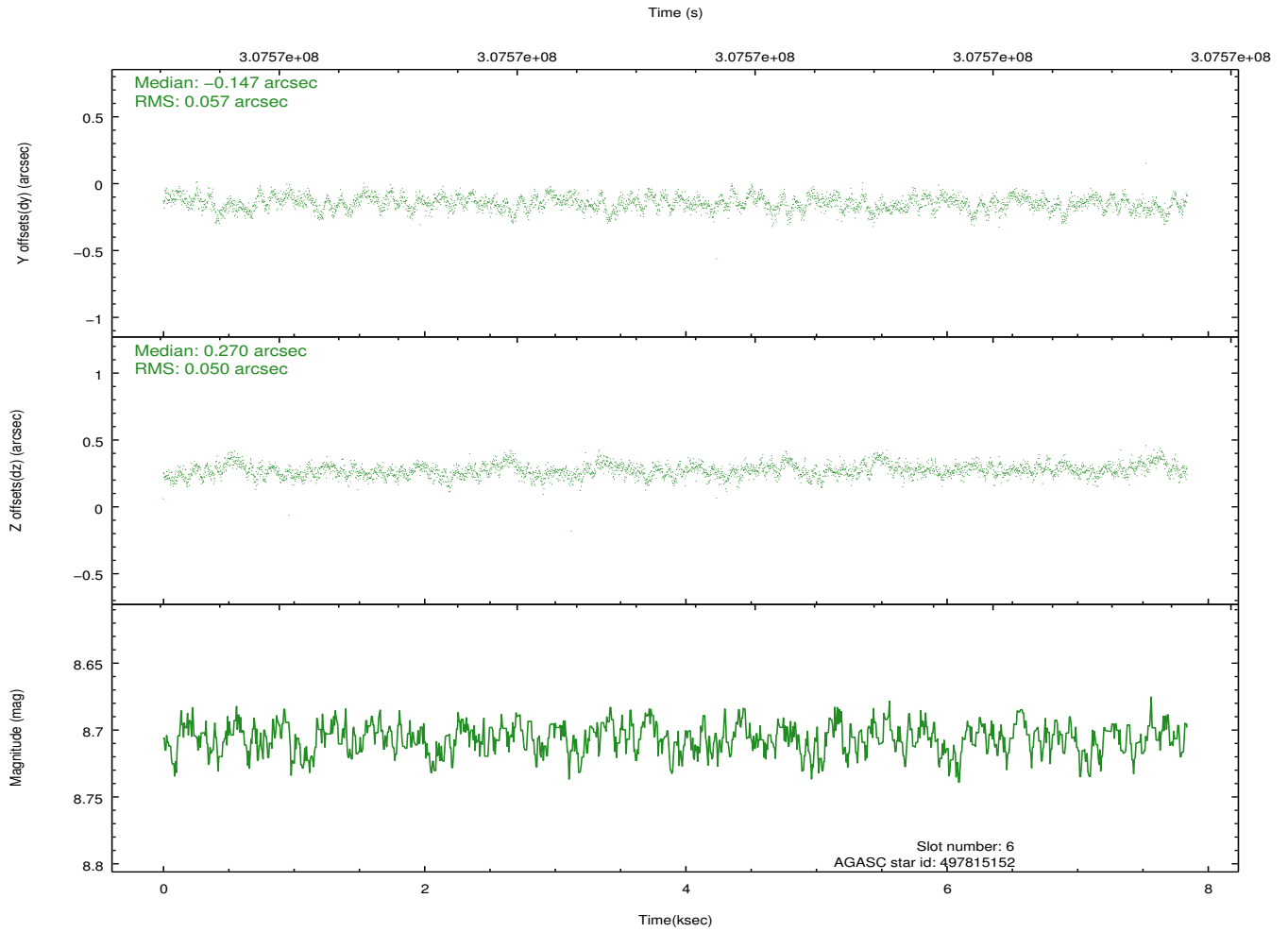
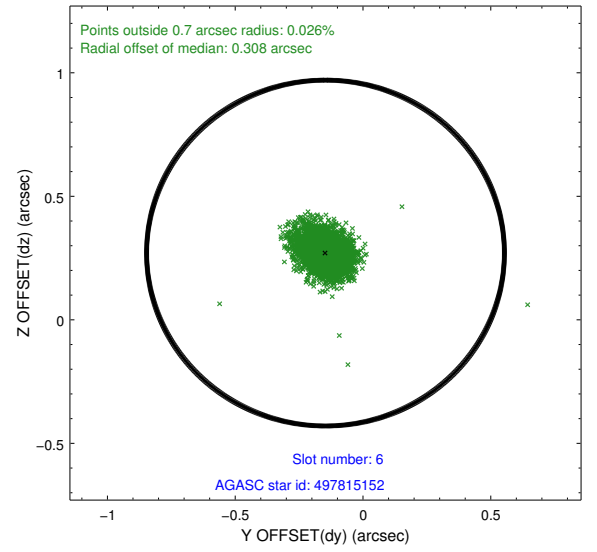
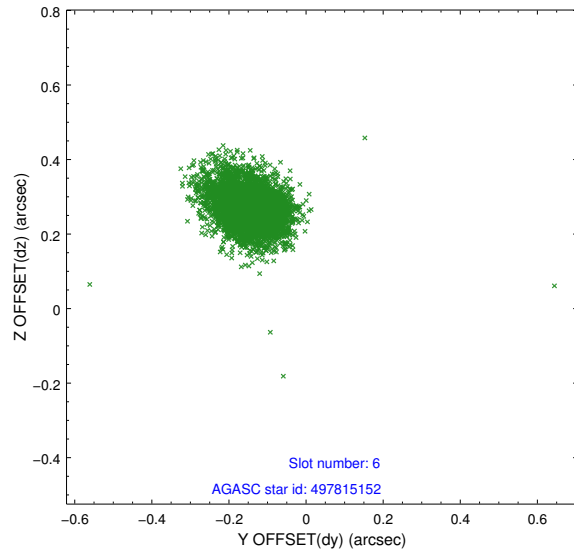
2.4.2 Slot 4



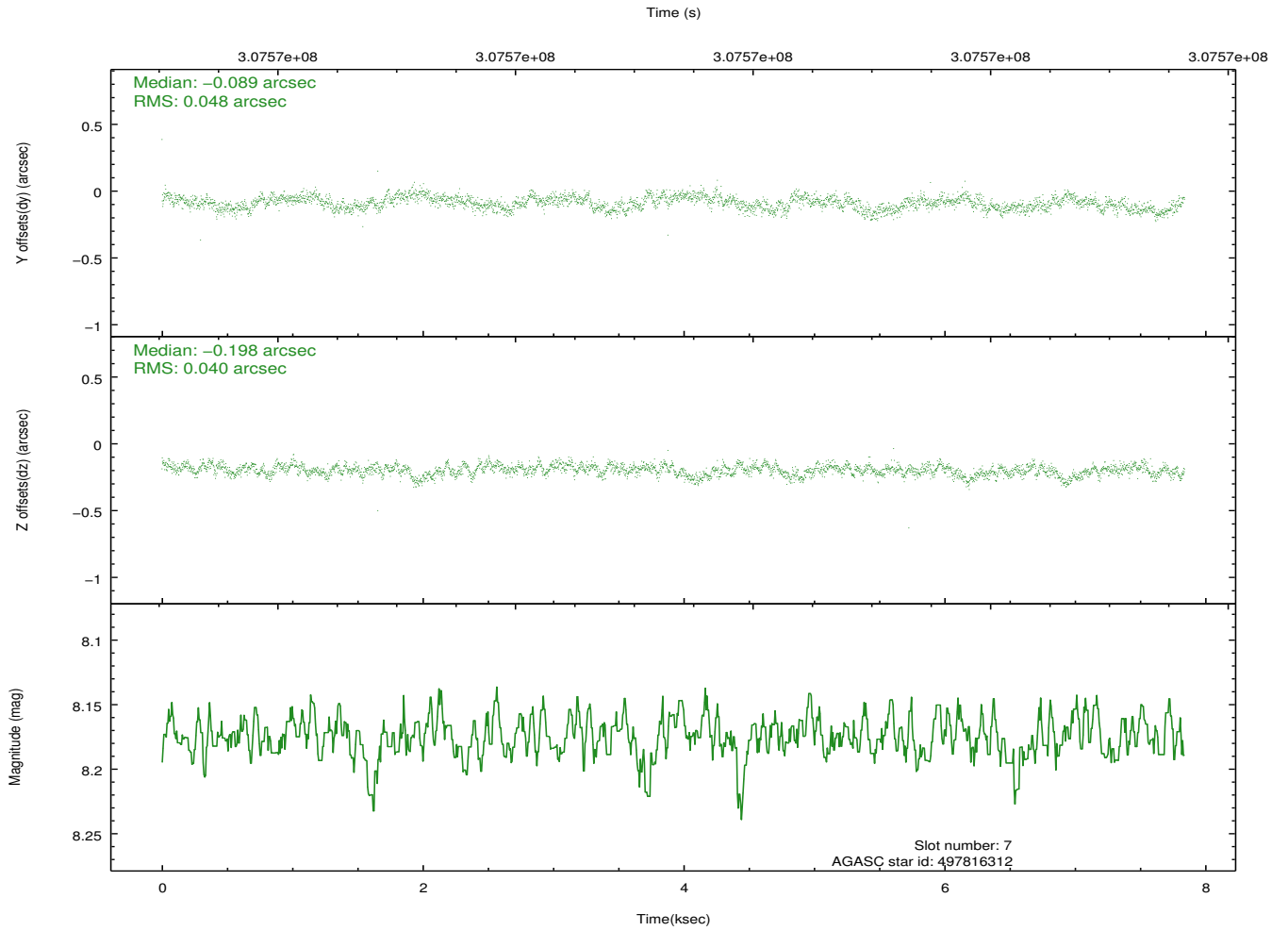
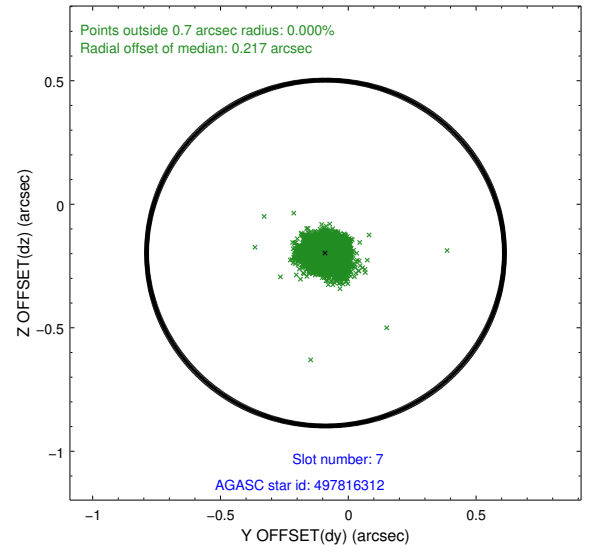
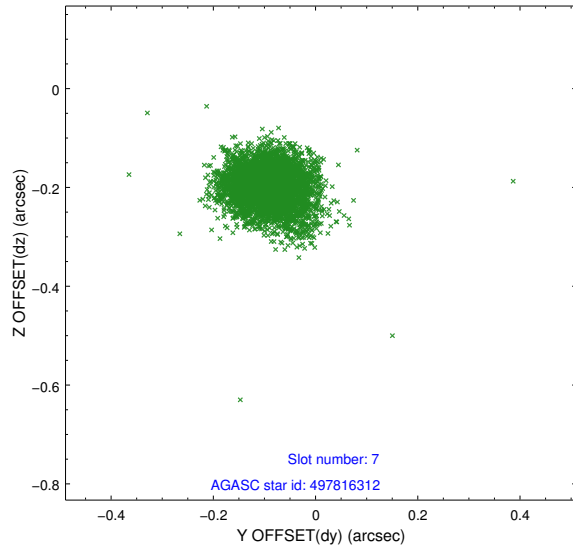
2.4.3 Slot 5



2.4.4 Slot 6

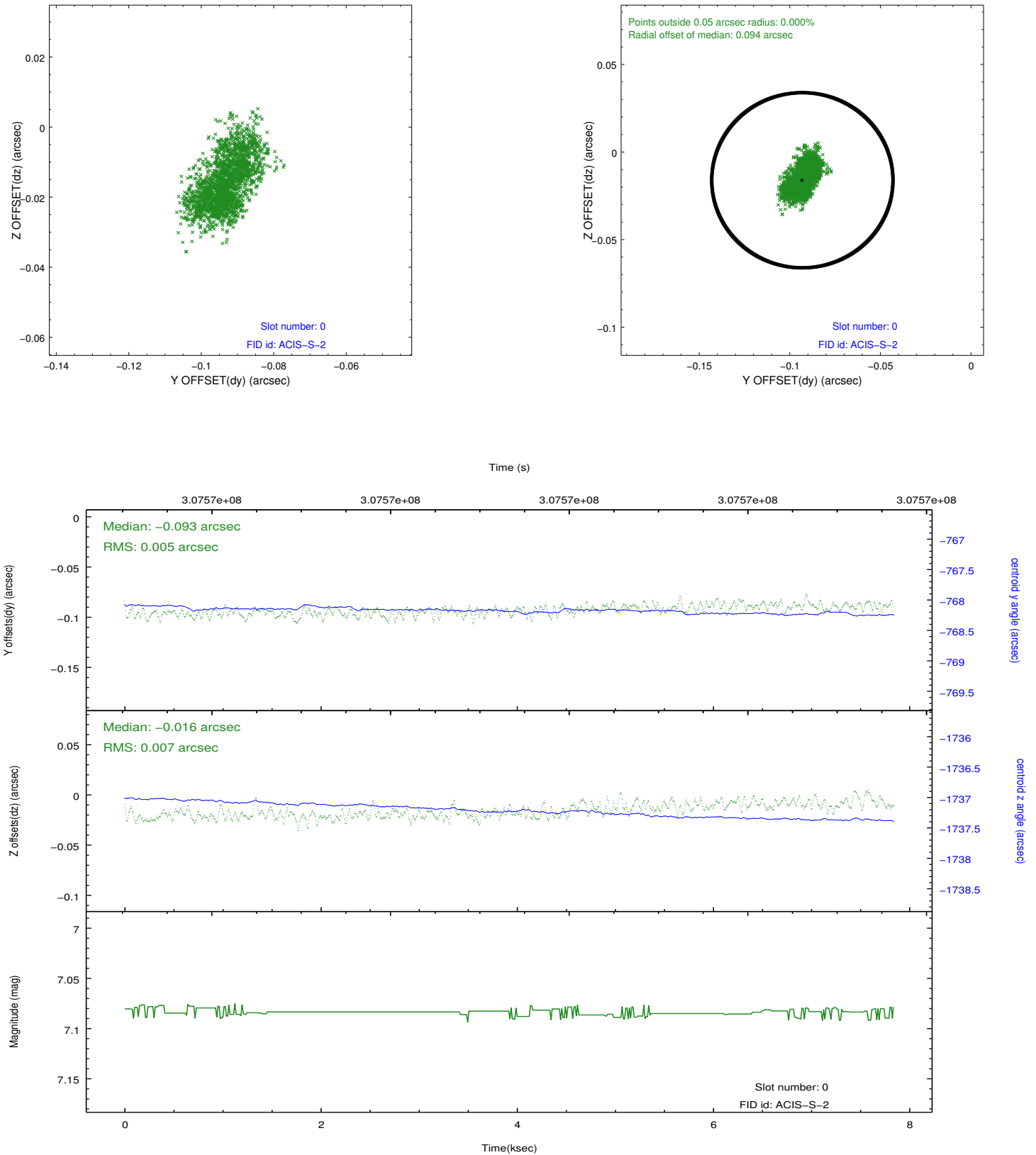


2.4.5 Slot 7

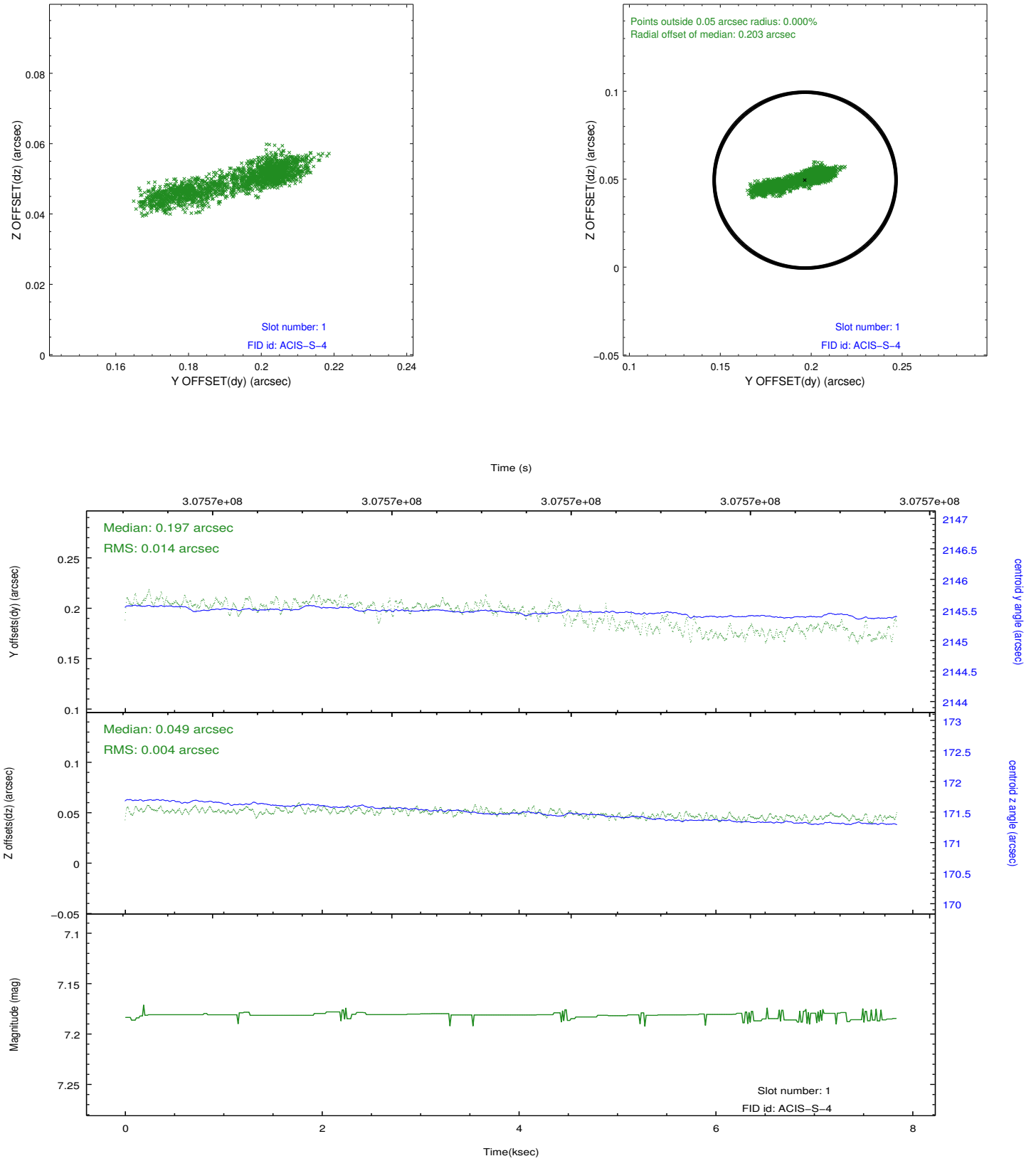


2.5 FID Slots

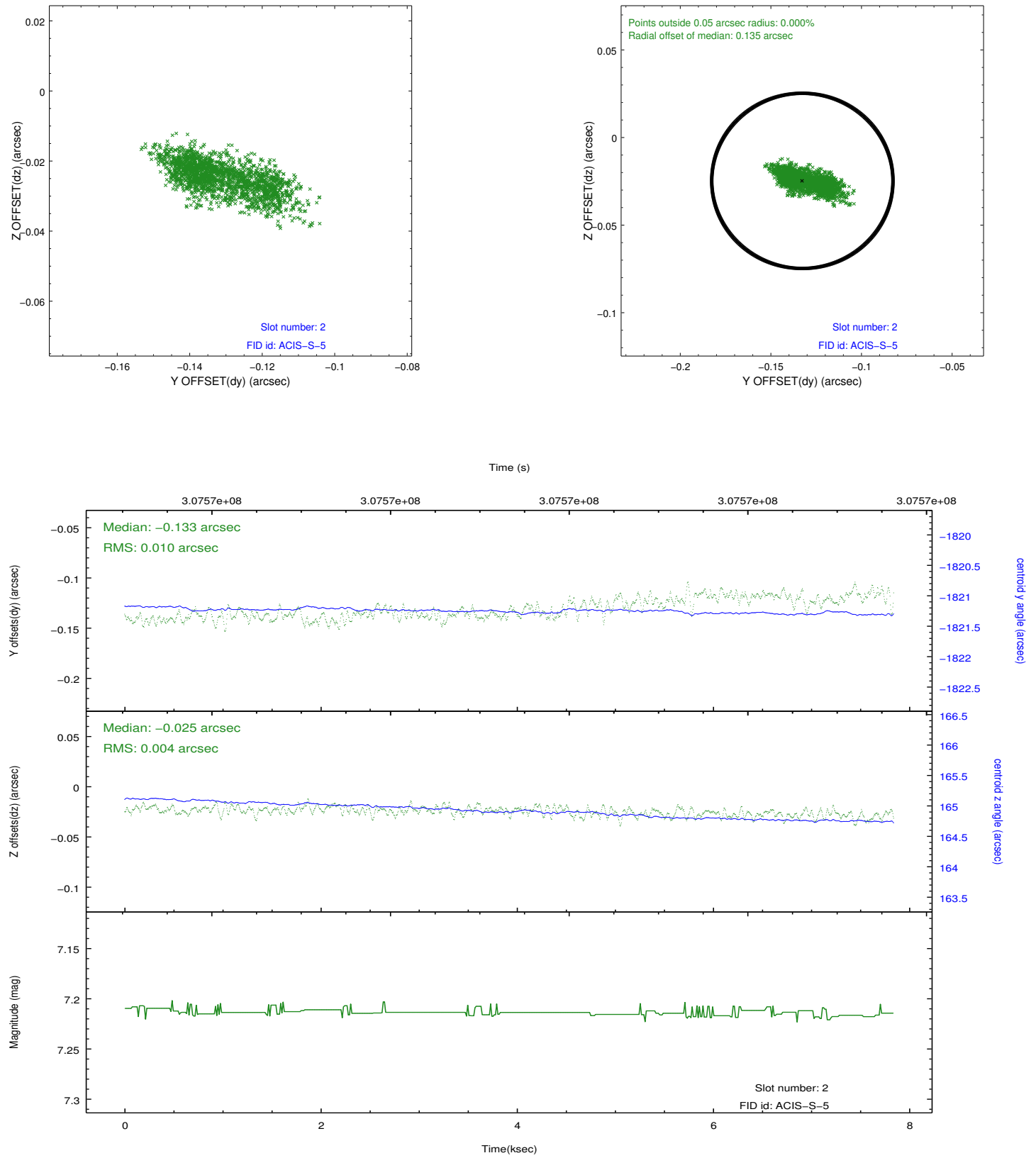
2.5.1 Slot 0



2.5.2 Slot 1



2.5.3 Slot 2



A Summary

A.1 Status

V&V Scientist	Jen Lauer
V&V Date (YYYY-MM-DD)	2012.05.03
V&V Edition	1
V&V Disposition and Status	OK
V&V Charge Time	7.03080005

A.2 Comments

Joint with VLA.