

V&V Reference Report

L2 ASCDS Version : 8.4.4

Observation 8225 - L2 Version 5
Chandra X-Ray Center

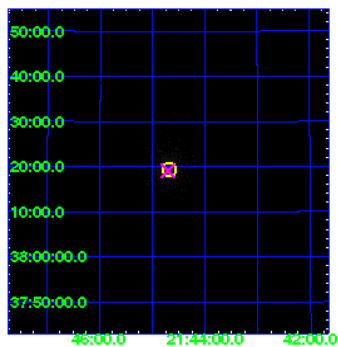
L2 Processing Date : Aug 11 2012

Contents

1	Front	2
2	OBI	3
2.1	OBI	3
2.1.1	Images	3
2.1.2	Parameters	4
2.1.3	Events	4
2.2	Compared Parameters	5
2.3	Aspect	6
2.4	Star Slots	9
2.4.1	Slot 3	9
2.4.2	Slot 4	10
2.4.3	Slot 5	11
2.4.4	Slot 6	12
2.4.5	Slot 7	13
2.5	FID Slots	14
2.5.1	Slot 0	14
2.5.2	Slot 1	15
2.5.3	Slot 2	16
A	Summary	17
A.1	Status	17
A.2	Comments	17

1 Front

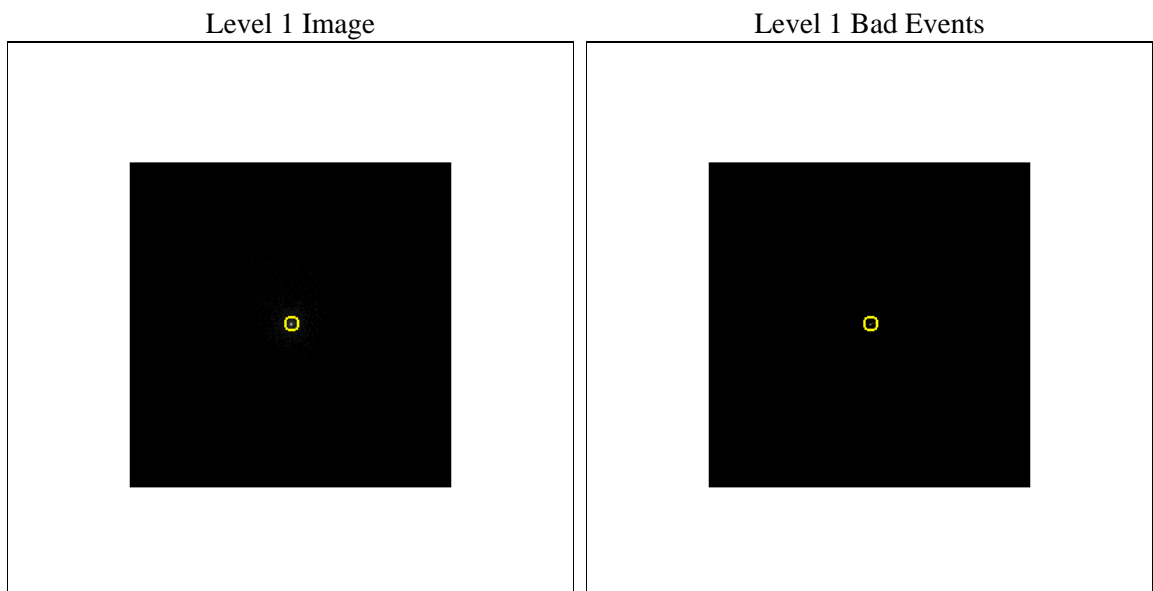
seq_num	900715	Sequence number
obs_id	8225	Observation id
title	Accurate Determination of the Dust-Scattering Halo Around Cyg X-2	
observer	Frederick Seward	Principal investigator
object	Cyg X-2	Source name
ra_targ	326.171667	Observer's specified target RA [deg]
dec_targ	38.321667	Observer's specified target Dec [deg]
ra_nom	326.17613341263	Nominal RA [deg]
dec_nom	38.318441909685	Nominal Dec [deg]
roll_nom	338.09457802735	Nominal Roll [deg]
revision	5	Processing version of data
ontime	2653.9813758135	[s]
livetime	870.29611696947	Ontime multiplied by DTCOR
l2events	439895	Number of level 2 events



2 OBI

2.1 OBI

2.1.1 Images



2.1.2 Parameters

obi_num	0	Obi number	sched_exp_time	2500.000000	[s] Scheduled observation exposure time
ascdsver	8.4.5	Processing system revision	ontime	2653.9813758135	[s]
caldbver	4.5.1.1	 	l1events	593248	Number of level 1 events
date	2012-08-11T17:57:38	Date and time of file creation			
revision	5	Processing version of data			

2.1.3 Events

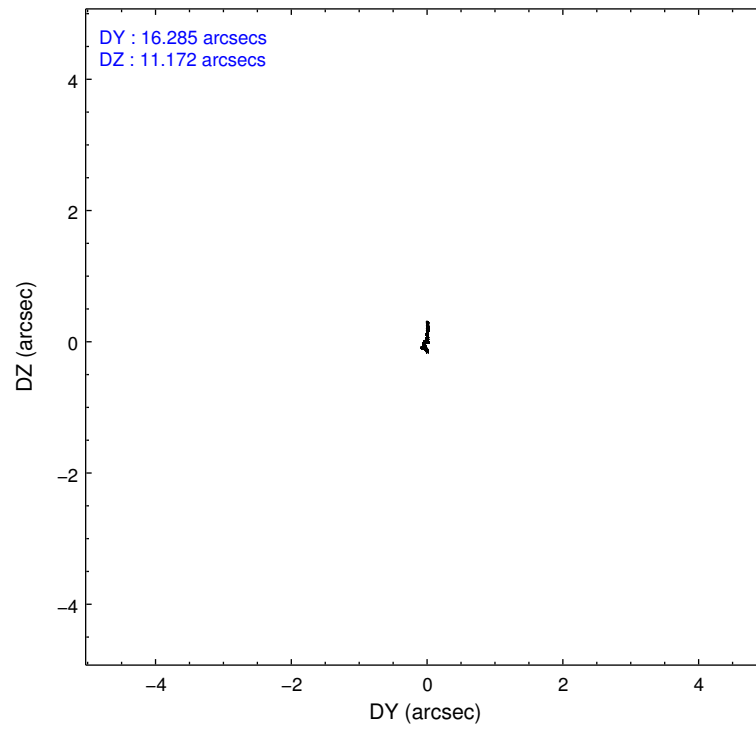
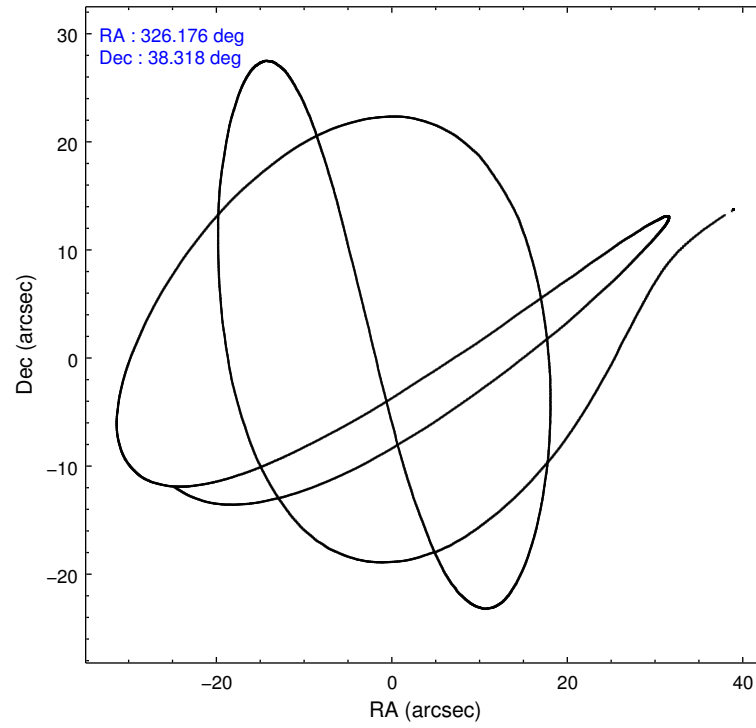
Level 1 Events

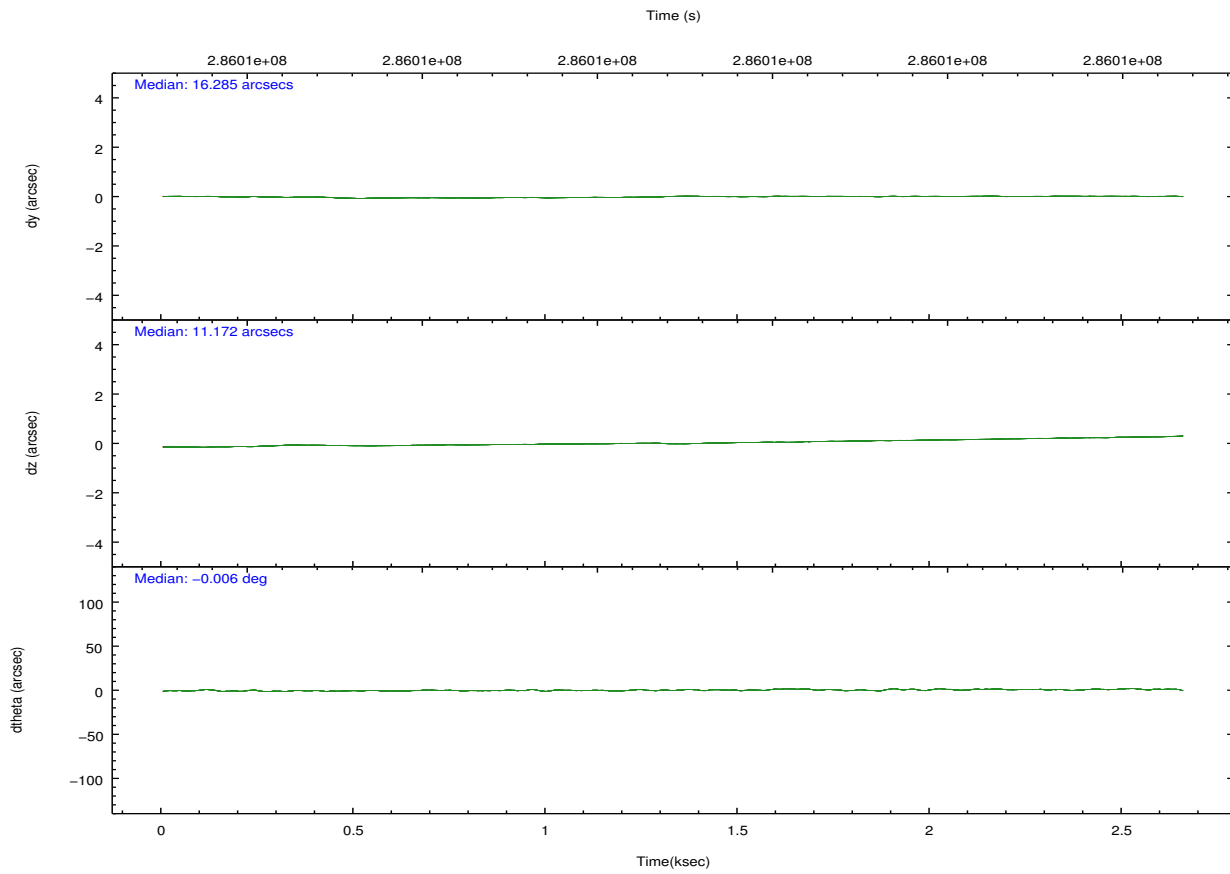
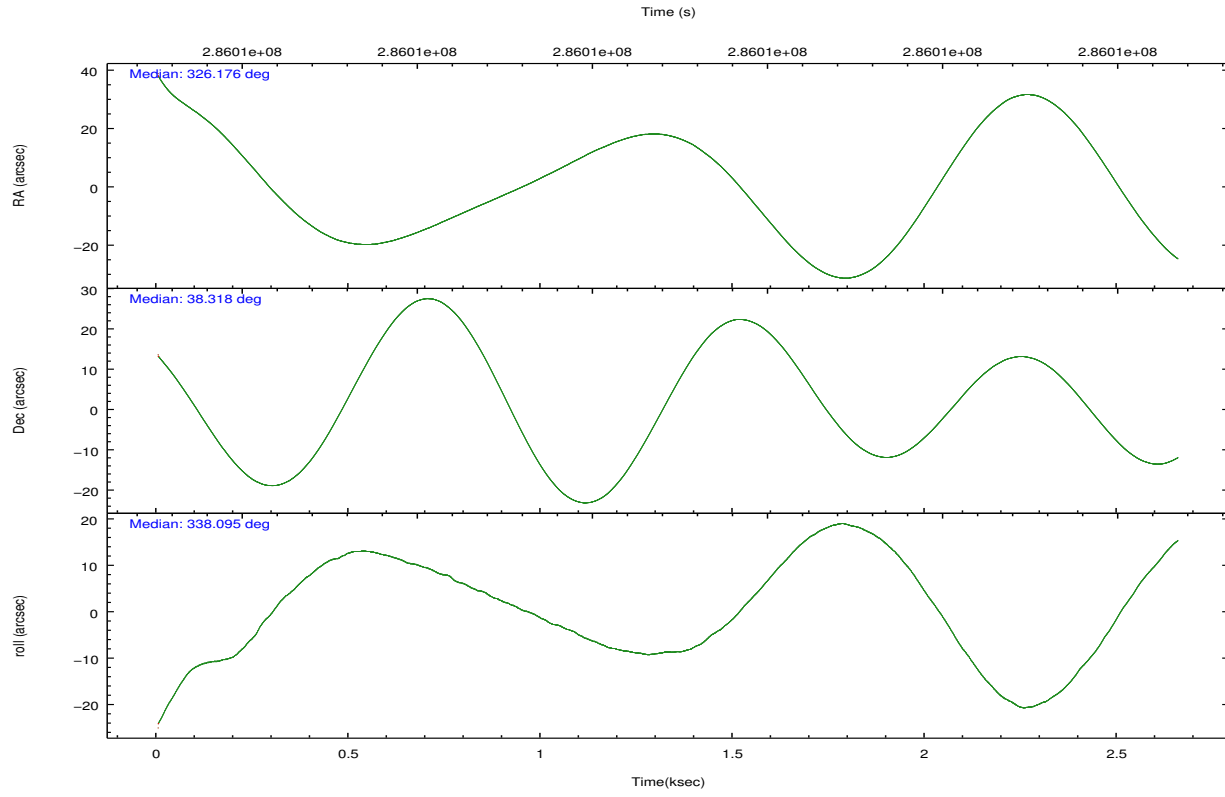
	segment 0
level 1 events	593248
rejected events	103775
rejected %	17%

2.2 Compared Parameters

Parameter	Planned	Actual	Parameter	Planned	Actual
Instrument	HRC	HRC	Obspar format version number	7	7
Detector	HRC-I	HRC-I	Obspar file type	PREDICTED	ACTUAL
Grating	NONE	NONE	Obspar update status	NONE	UPDATED
Data mode	OBSERVING	OBSERVING			
Observation mode	POINTING	POINTING			
[deg] Pointing RA	326.141368	326.1761334126308			
[deg] Pointing Dec	38.314304	38.31844190968491			
[deg] Pointing Roll	338.211666	338.0945780273519			
[mm] SIM focus pos	-1.040293	-1.038866356238299			
[mm] SIM defocus	0	0.001426264420575141			
[mm] SIM translation stage pos	86.985494	86.99279511867444			
[mm] SIM translation stage offset	40	39.99269377292713			
[s] Observation start time (MET)	286006049.184000	286004887.75025			
Observation start date	2007-01-24T06:06:24	2007-01-24T05:48:07			
[s] Observation end time (MET)	286008549.184000	286009210.68795			
Observation end date	2007-01-24T06:48:04	2007-01-24T07:00:10			

2.3 Aspect



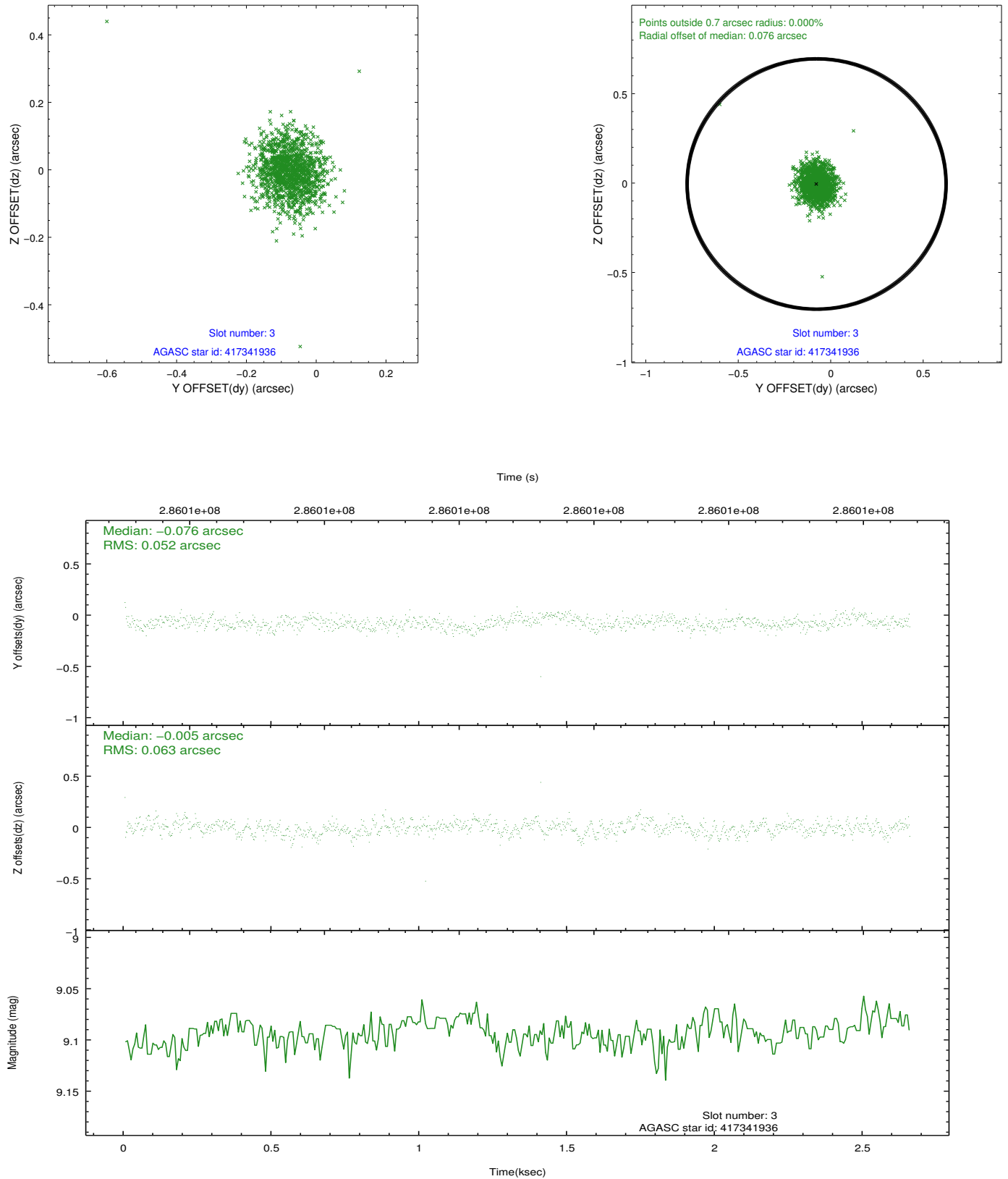


Slot Statistics

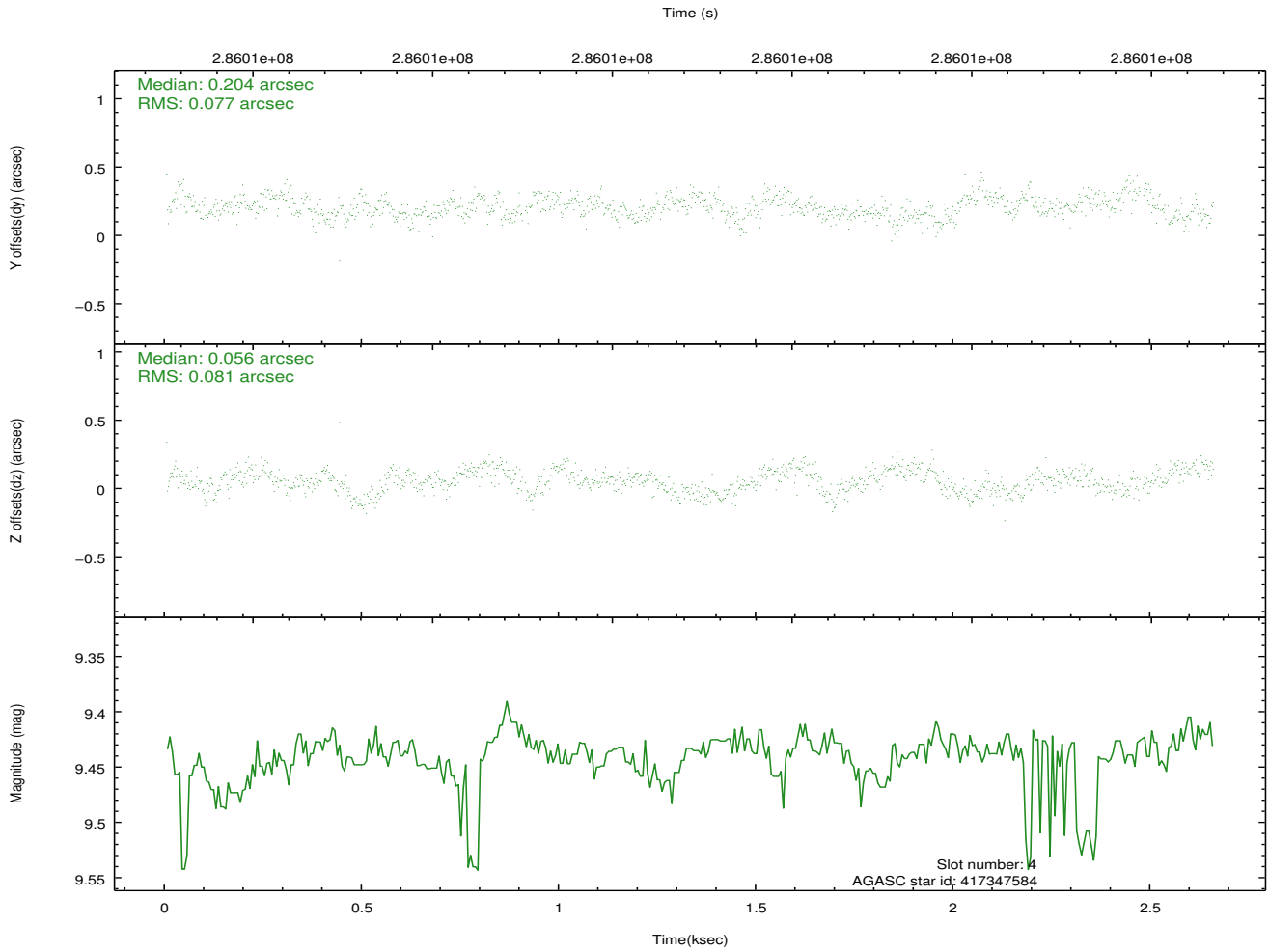
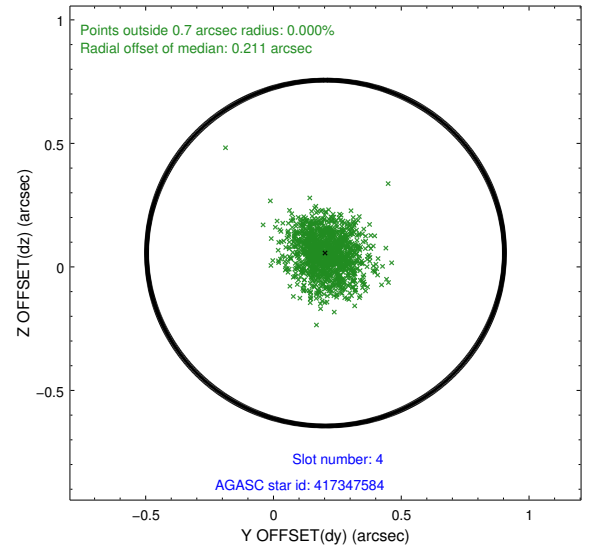
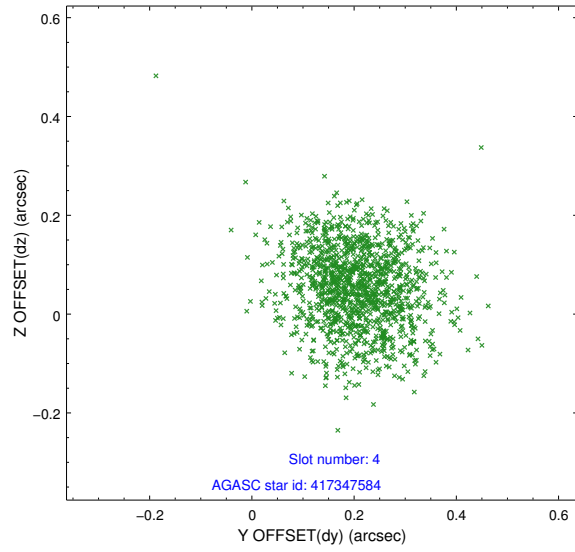
slot	status	id	mag	n_pts	med_dy	med_dz	dr1	dr2	ra	dec	mean_y	mean_z
0	FID	HRC-I-1	6.95	648	-0.301	-0.197	0.009	0.016	0.000000	0.000000	-770.71	-481.73
1	FID	HRC-I-3	7.02	648	0.202	-0.207	0.008	0.014	0.000000	0.000000	-1202.78	1826.31
2	FID	HRC-I-4	6.90	648	0.214	0.312	0.007	0.011	0.000000	0.000000	1267.85	1828.61
3	GUIDE	417341936	9.09	1296	-0.076	-0.005	0.084	0.133	326.275716	38.441212	180.42	565.66
4	GUIDE	417347584	9.44	1290	0.204	0.056	0.119	0.189	326.789051	38.342651	1656.62	780.57
5	GUIDE	417348152	8.98	1293	0.004	-0.097	0.098	0.158	326.316862	38.327313	442.34	228.94
6	GUIDE	417348376	8.23	1296	0.003	0.041	0.075	0.123	325.737694	38.184491	-889.69	-855.39
7	GUIDE	417351928	7.79	1295	-0.132	0.014	0.060	0.095	326.969486	38.210974	2306.85	533.64

2.4 Star Slots

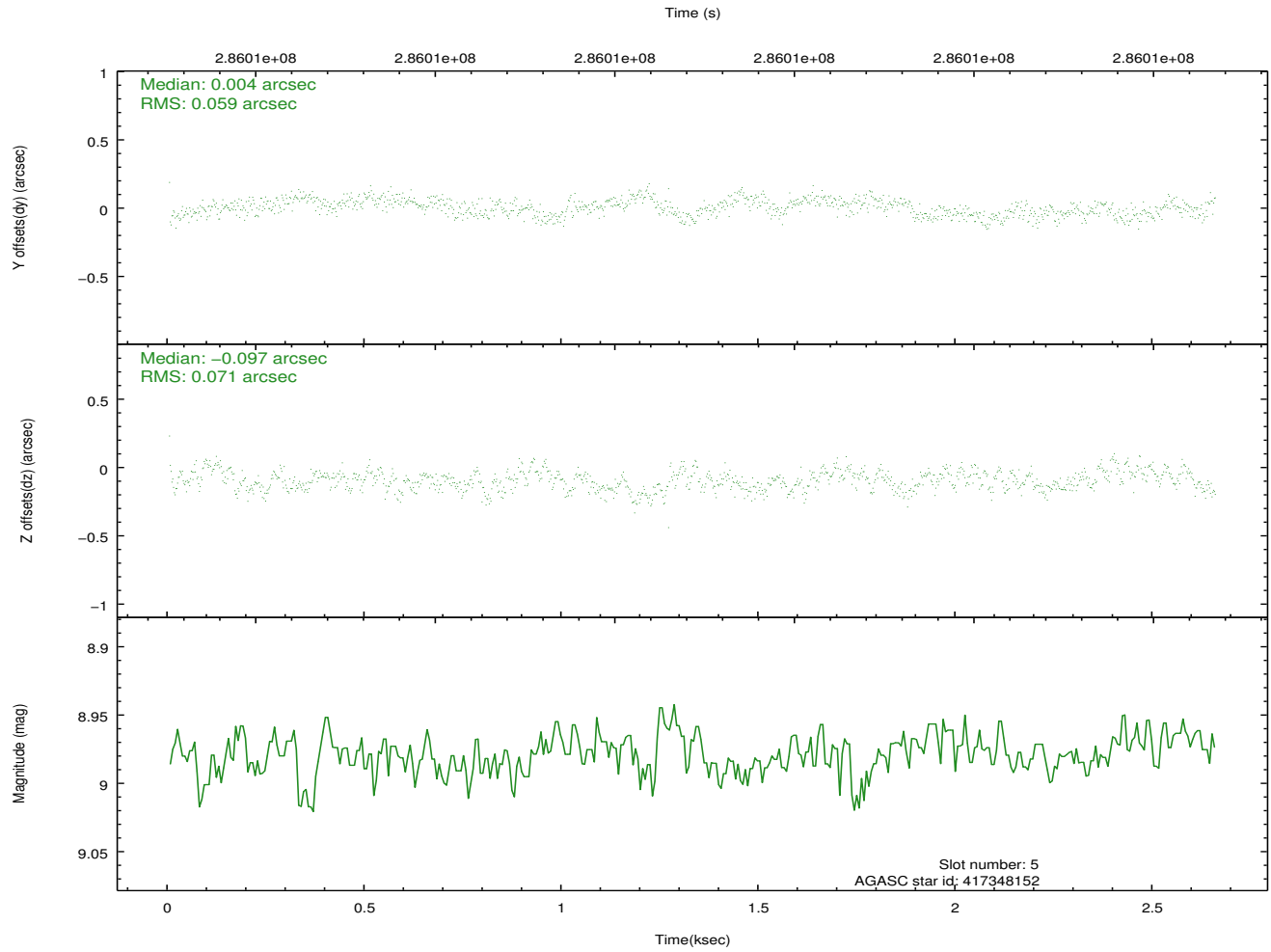
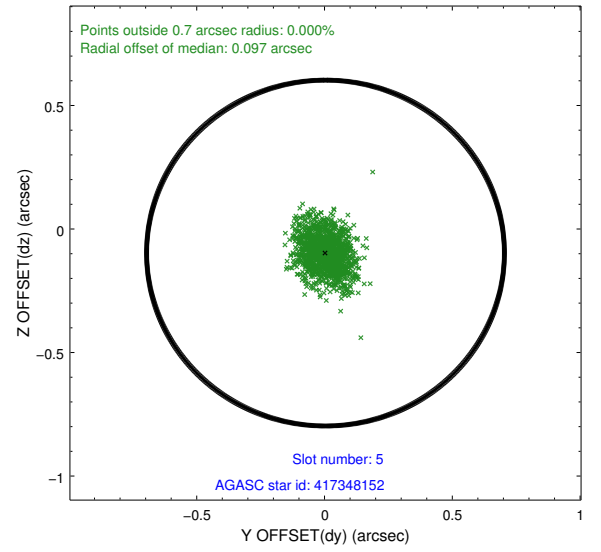
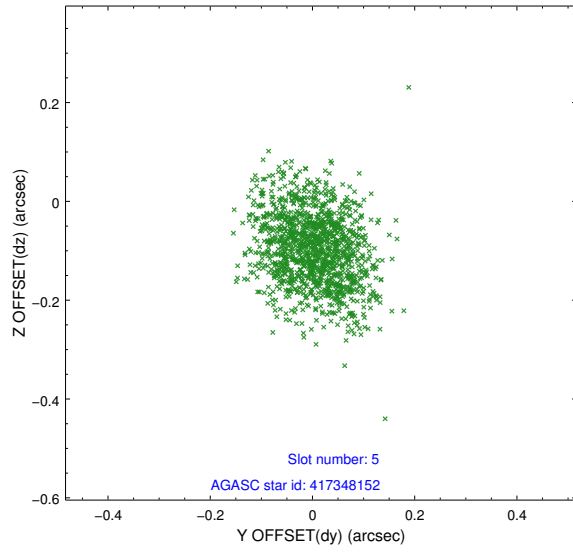
2.4.1 Slot 3



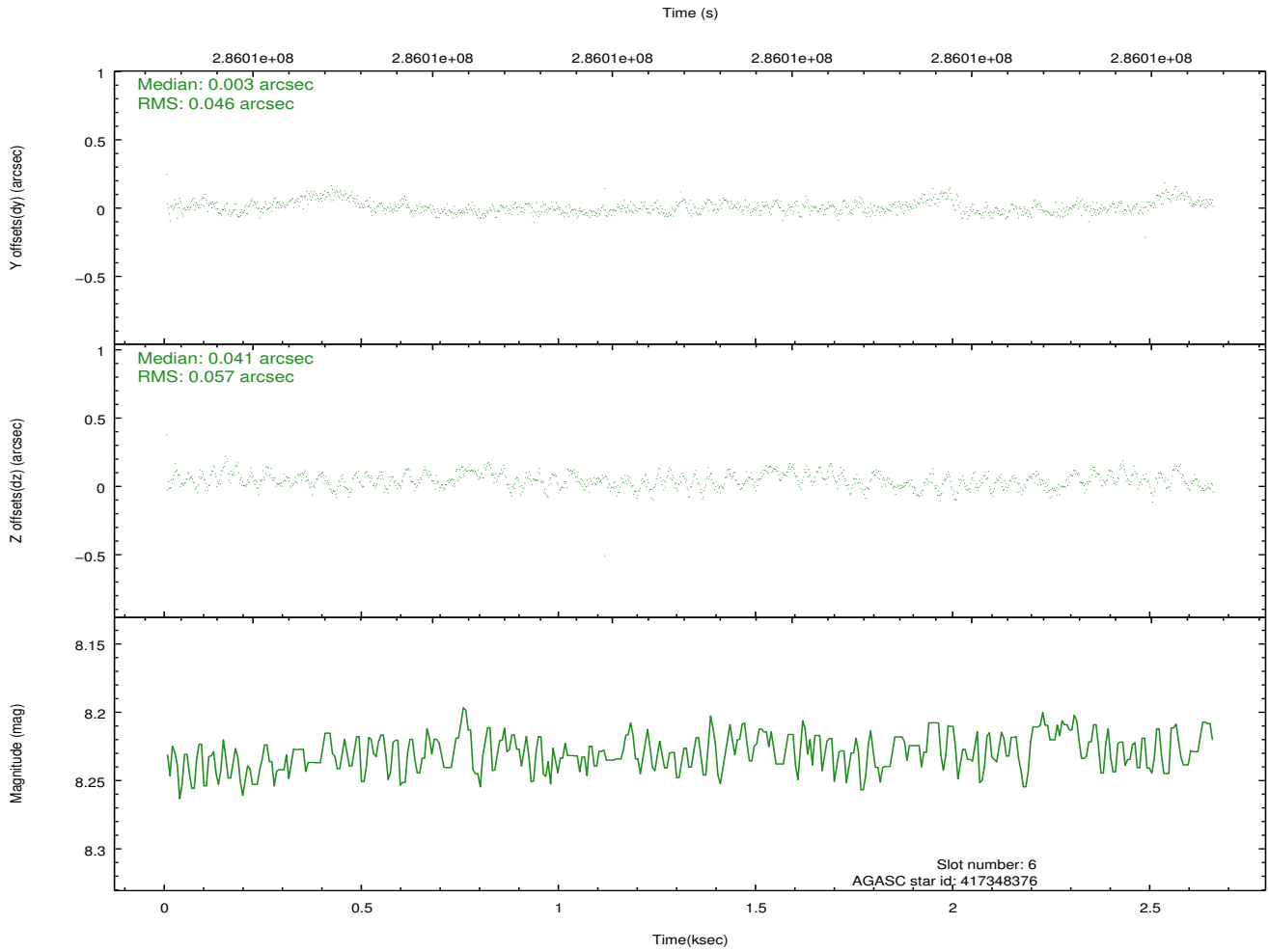
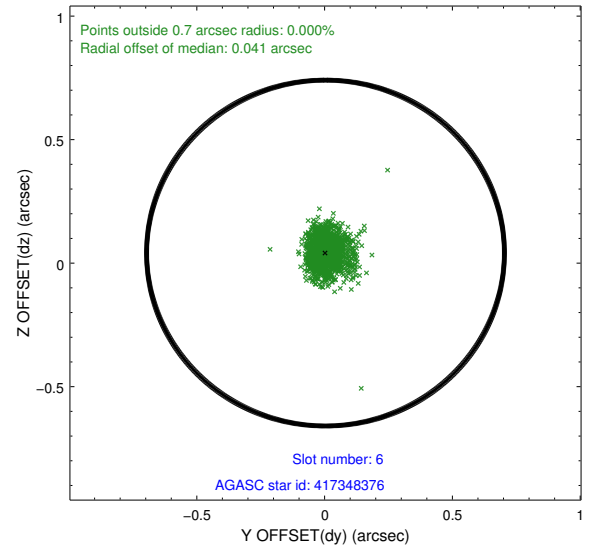
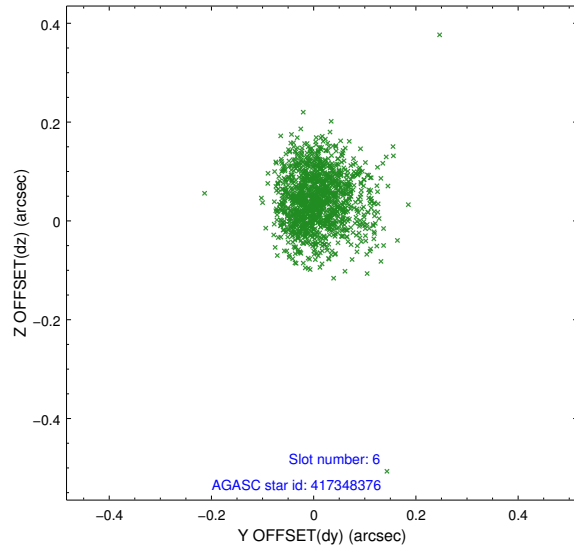
2.4.2 Slot 4



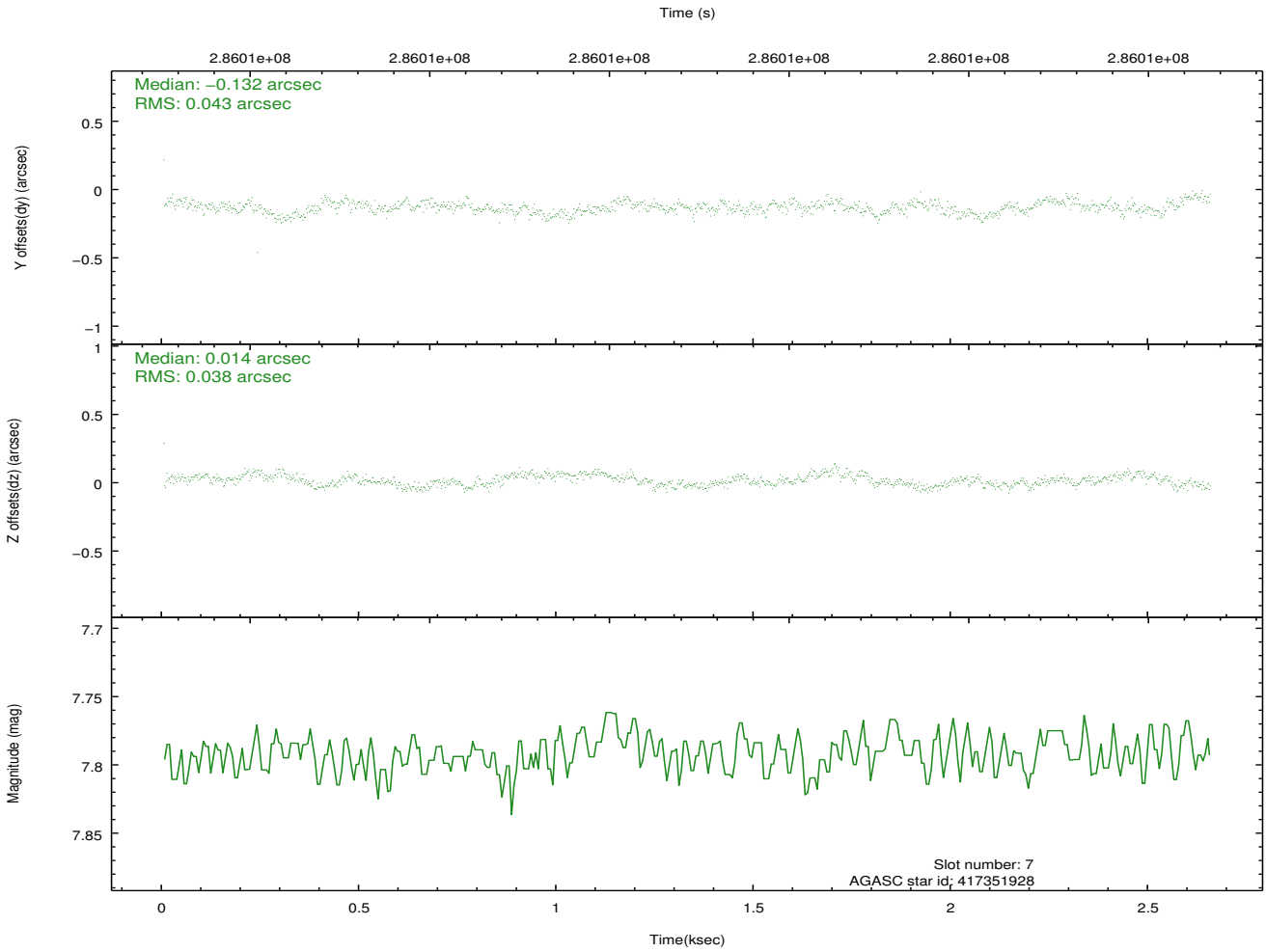
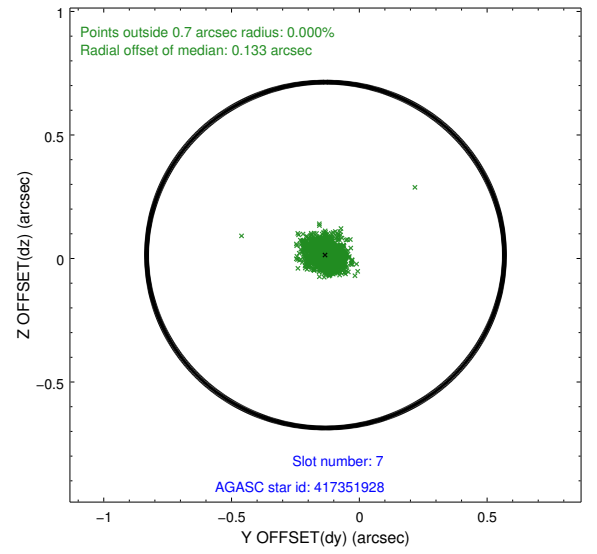
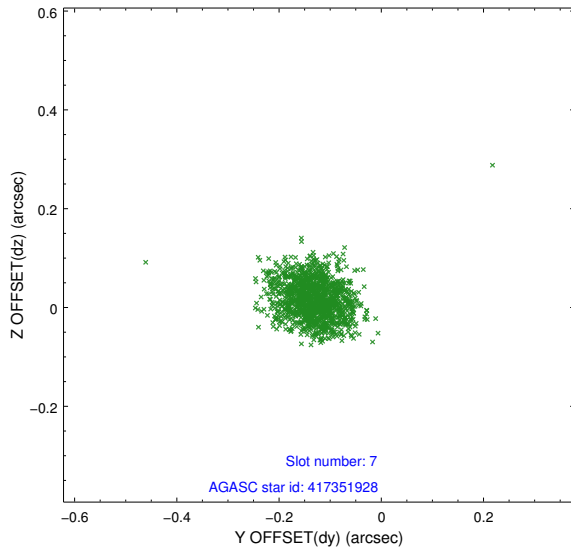
2.4.3 Slot 5



2.4.4 Slot 6

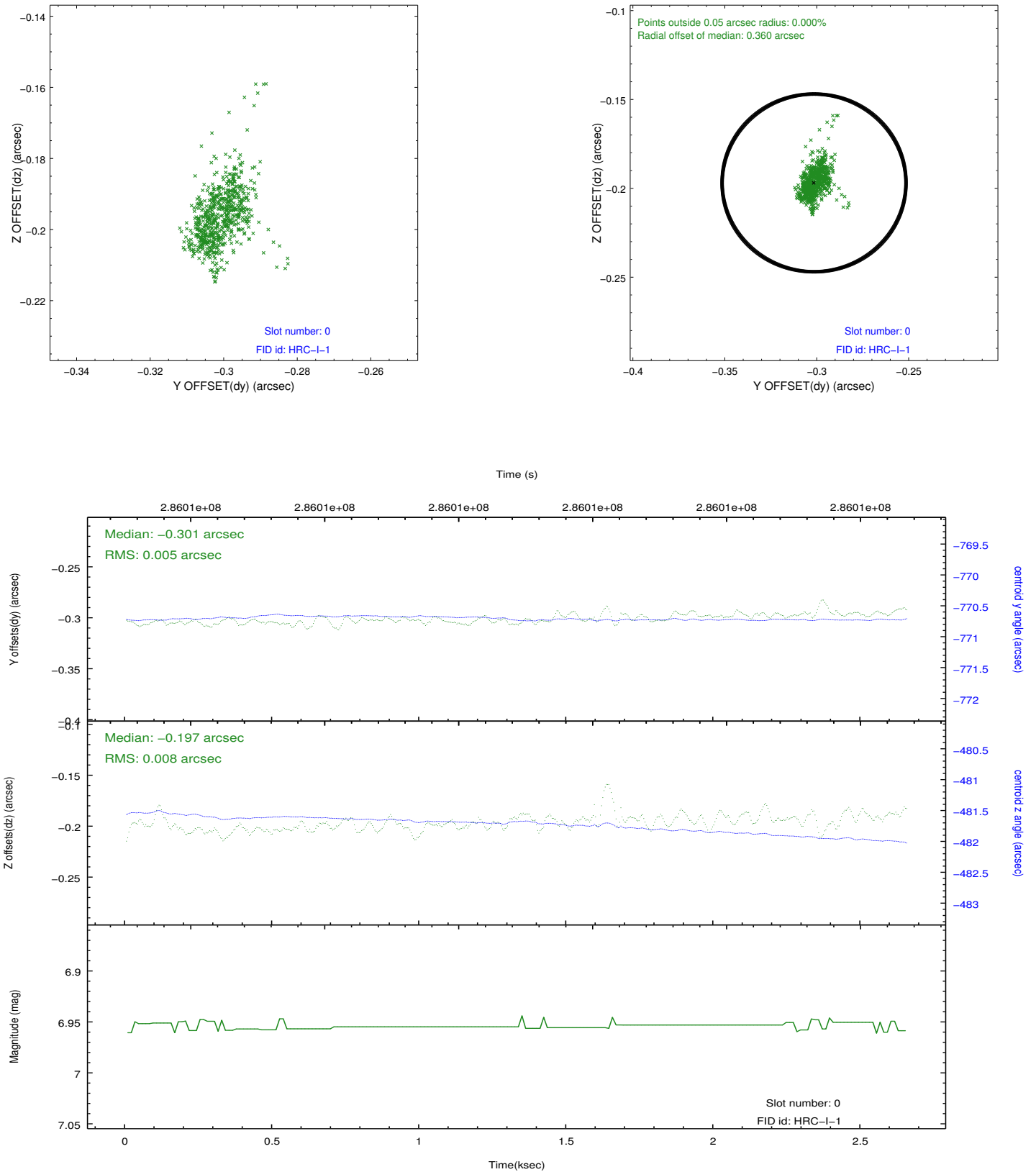


2.4.5 Slot 7

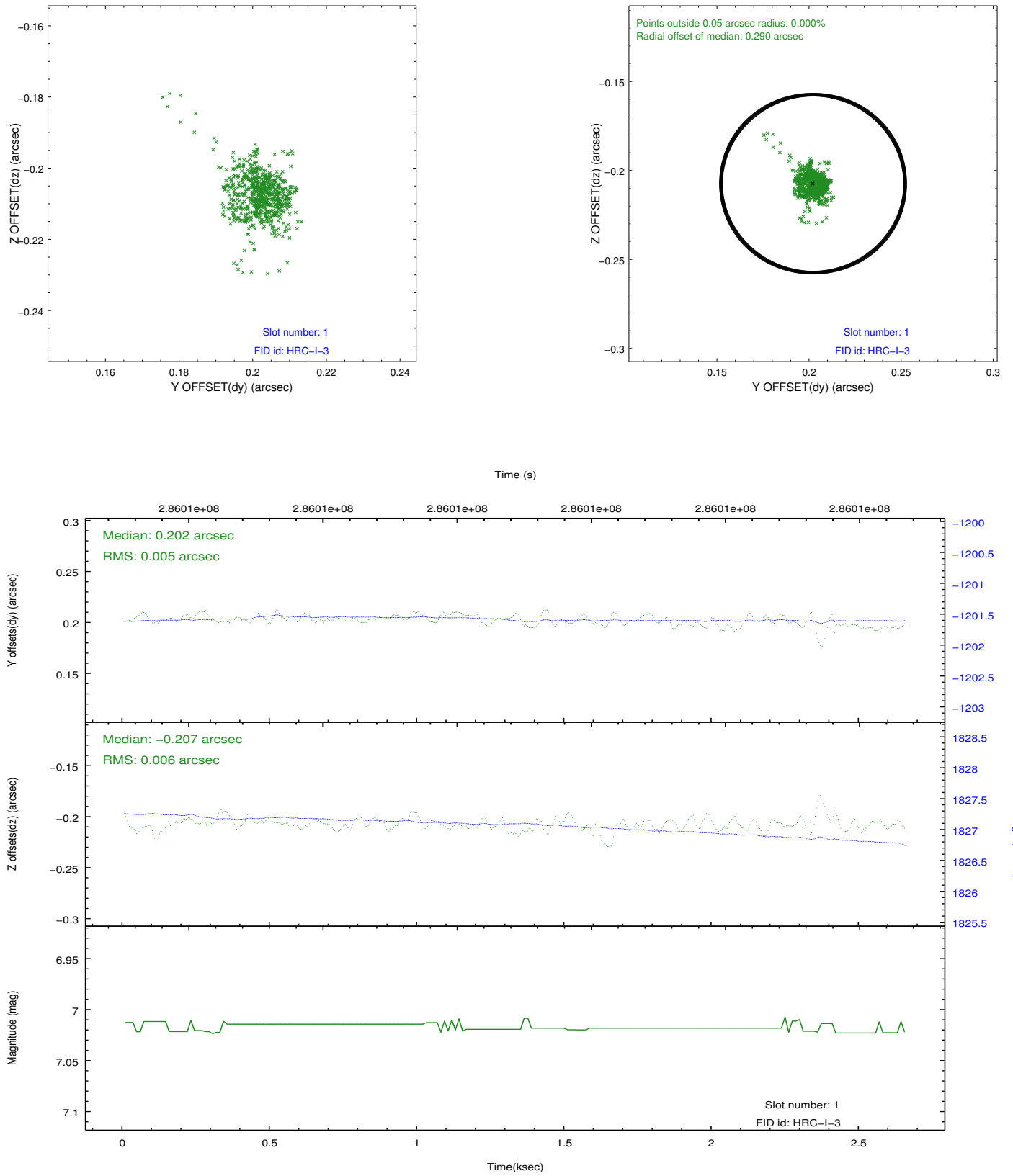


2.5 FID Slots

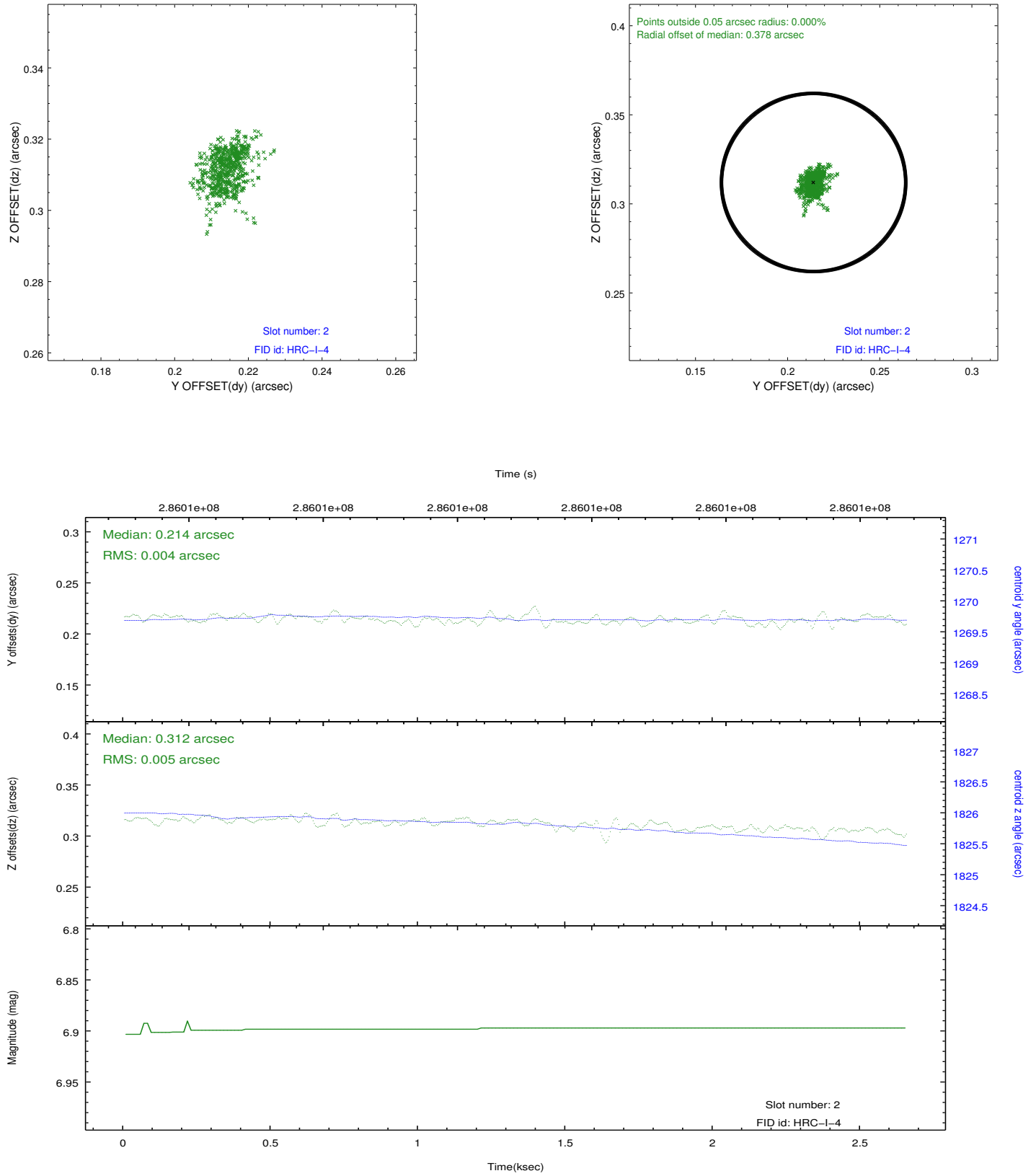
2.5.1 Slot 0



2.5.2 Slot 1



2.5.3 Slot 2



A Summary

A.1 Status

V&V Scientist	Joy Nichols
V&V Date (YYYY-MM-DD)	2012.08.23
V&V Edition	1
V&V Disposition and Status	OK
V&V Charge Time	2.65398137

A.2 Comments