

V&V Reference Report

L2 ASCDS Version : 8.4.4

Observation 8205 - L2 Version 2
Chandra X-Ray Center

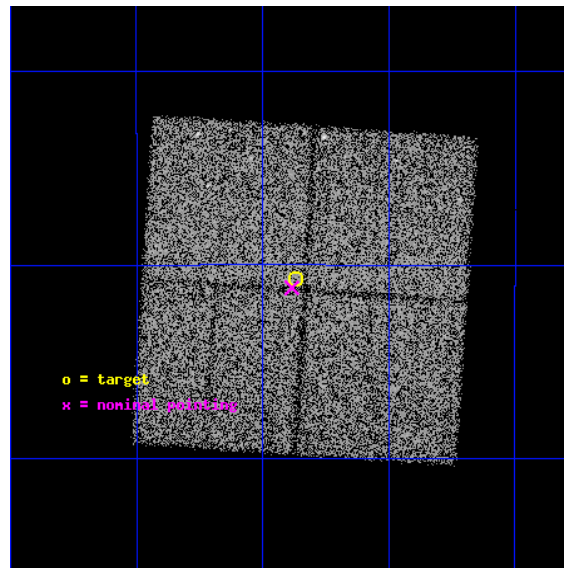
L2 Processing Date : Apr 29 2012

Contents

1	Front	2
2	OBI	3
2.1	OBI	3
2.1.1	Images	3
2.1.2	Bias	3
2.1.3	Parameters	4
2.1.4	Events	4
2.2	Compared Parameters	5
2.3	Aspect	6
2.4	Star Slots	9
2.4.1	Slot 3	9
2.4.2	Slot 4	10
2.4.3	Slot 5	11
2.4.4	Slot 6	12
2.4.5	Slot 7	13
2.5	FID Slots	14
2.5.1	Slot 0	14
2.5.2	Slot 1	15
2.5.3	Slot 2	16
A	Summary	17
A.1	Status	17
A.2	Comments	17

1 Front

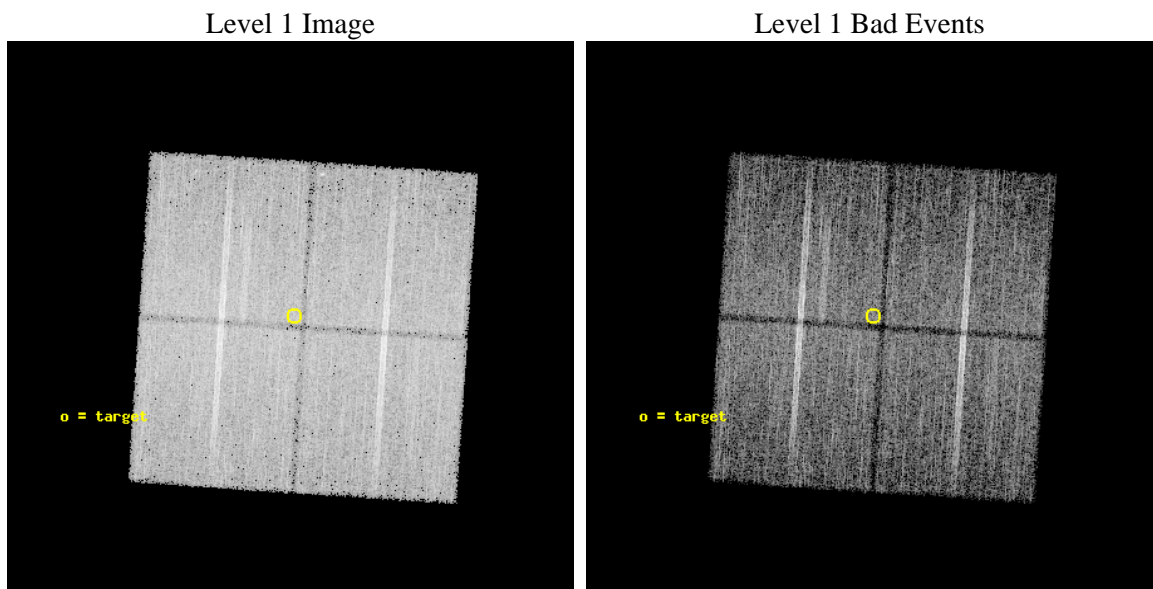
seq_num	600641	Sequence number
obs_id	8205	Observation id
title	Galactic Bulge Latitude Survey-2	Proposal title
observer	Professor Johnathan Grindlay	Principal investigator
object	GBW25	Source name
dtcycle	0	
cycle	P	events from which exps? Prim/Second/Both
ra_targ	265.717917	Observer's specified target RA [deg]
dec_targ	-28.345556	Observer's specified target Dec [deg]
ra_nom	265.72122727	Nominal RA [deg]
dec_nom	-28.353109968281	Nominal Dec [deg]
roll_nom	273.81025211632	Nominal Roll [deg]
revision	2	Processing version of data
ontime	14780.718163133	Sum of GTIs [s]
livetime	14587.597198925	Livetime [s]
ontime0	14787.000113726	Sum of GTIs [s]
ontime1	14787.000113726	Sum of GTIs [s]
ontime2	14787.000113726	Sum of GTIs [s]
ontime3	14780.718163133	Sum of GTIs [s]
l2events	69325	Number of level 2 events



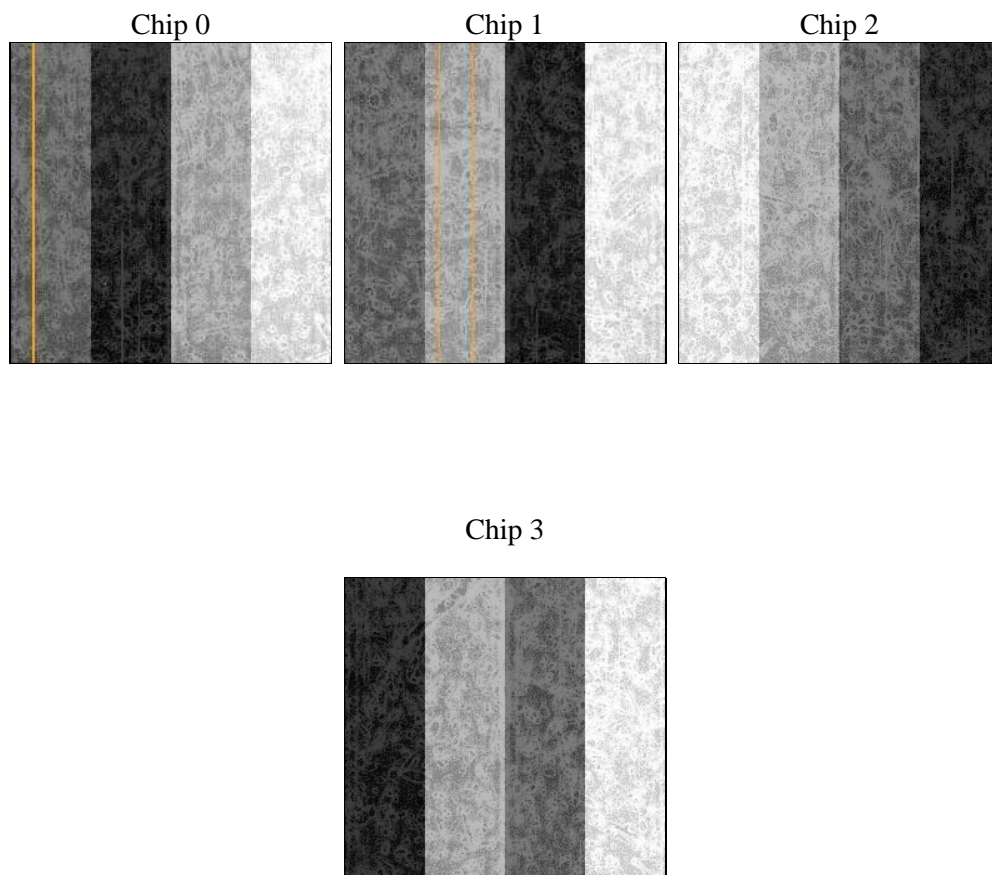
2 OBI

2.1 OBI

2.1.1 Images



2.1.2 Bias



2.1.3 Parameters

obi_num	0	Obi number	sched_exp_time	15000.000000	[s] Scheduled observation exposure time
ascdsver	8.4.4	Processing system revision	ontime	14780.718163133	Sum of GTIs [s]
caldsver	4.4.9	 	ontime0	14787.000113726	Sum of GTIs [s]
date	2012-04-29T02:22:48	Date and time of file creation	ontime1	14787.000113726	Sum of GTIs [s]
revision	2	Processing version of data	ontime2	14787.000113726	Sum of GTIs [s]
			ontime3	14780.718163133	Sum of GTIs [s]
			l1events	557945	Number of level 1 events

2.1.4 Events

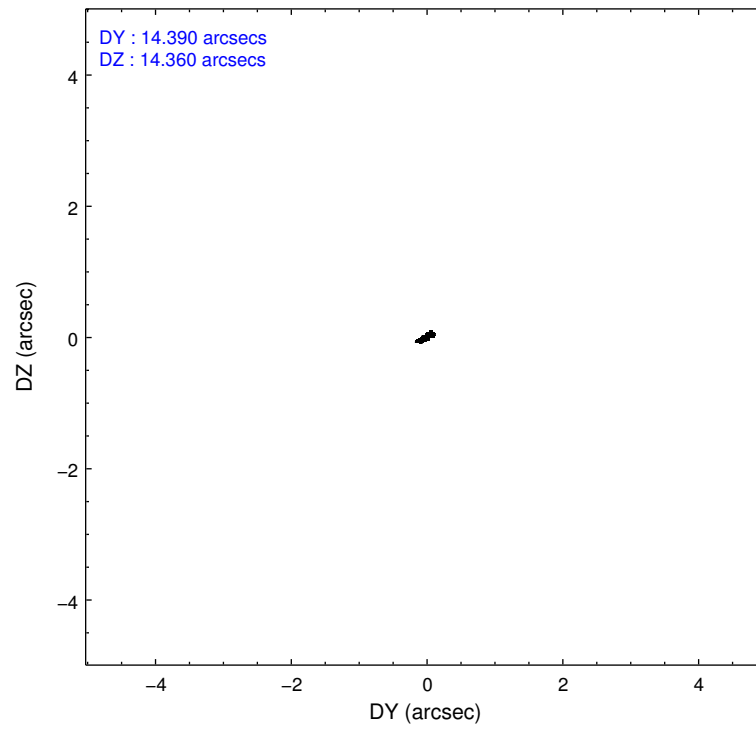
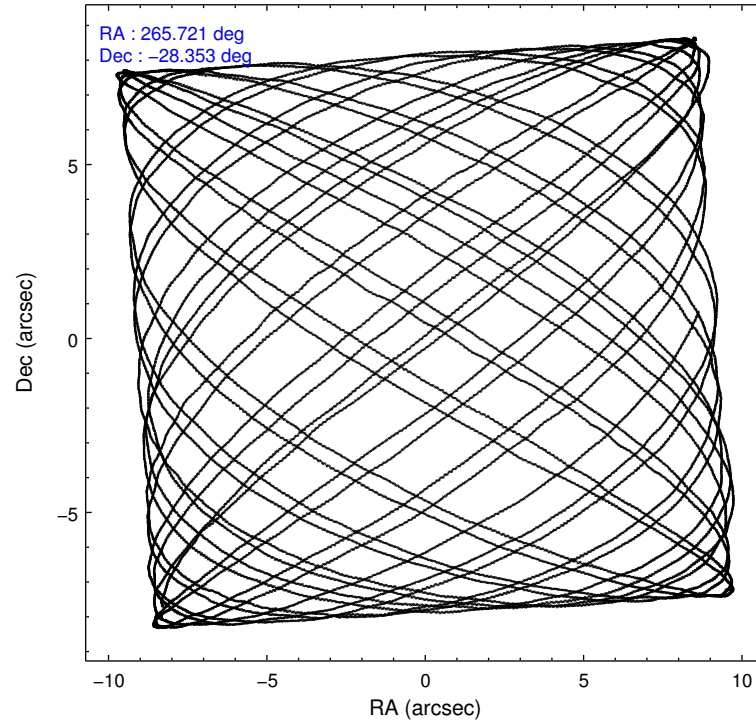
	ccd 0	ccd 1	ccd 2	ccd 3
level 1 events	135023	133629	144991	144302
rejected events	115448	112673	125415	124665
rejected %	85%	84%	86%	86%

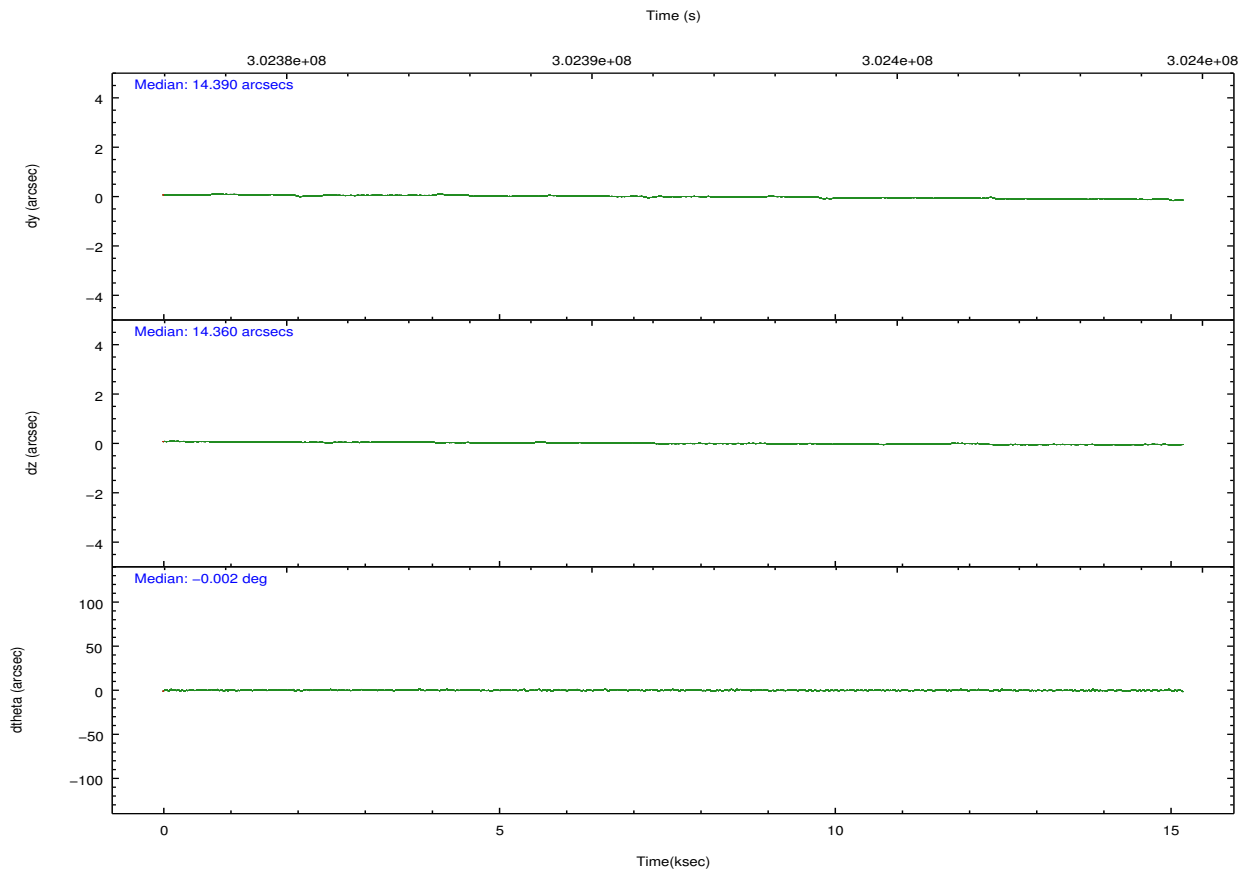
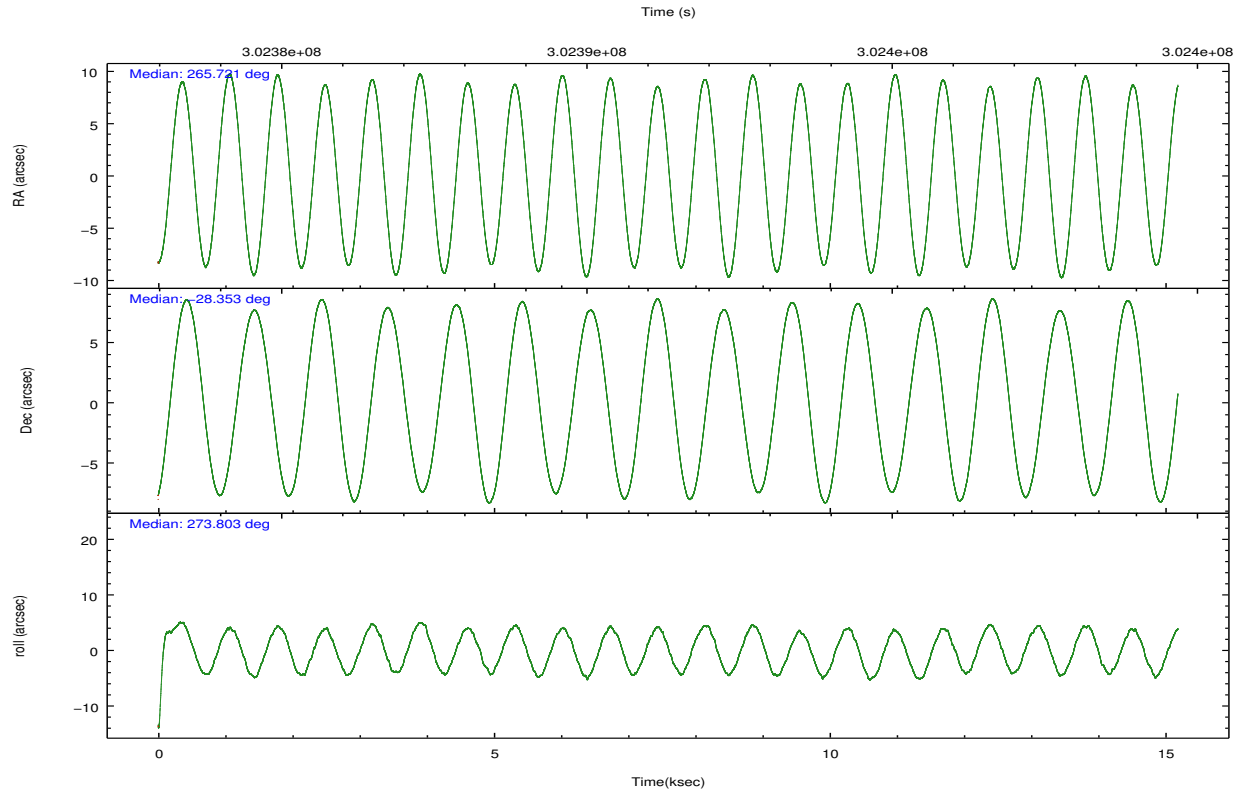
	ccd 0	ccd 1	ccd 2	ccd 3
grade 0 events	9220	9226	9705	9432
	6%	6%	6%	6%
grade 1 events	91	70	111	108
	0%	0%	0%	0%
grade 2 events	3965	4432	3827	3734
	2%	3%	2%	2%
grade 3 events	1689	1844	1680	1682
	1%	1%	1%	1%
grade 4 events	1641	1787	1622	1770
	1%	1%	1%	1%
grade 5 events	5656	6145	5573	6600
	4%	4%	3%	4%
grade 6 events	3071	3673	2753	3030
	2%	2%	1%	2%
grade 7 events	109690	106452	119720	117946
	81%	79%	82%	81%

2.2 Compared Parameters

Parameter	Planned	Actual	Parameter	Planned	Actual
Instrument	ACIS	ACIS	Obspar format version number	7	7
Detector	ACIS-0123	ACIS-0123	Obspar file type	PREDICTED	ACTUAL
Grating	NONE	NONE	Obspar update status	NONE	UPDATED
Data mode	VFAINT	VFAINT	Number of optional ACIS chips dropped	0	0
Observation mode	POINTING	POINTING	On-chip summing requested	N	N
[deg] Pointing RA	265.703728	265.7212272700019	Subarray requested	NONE	NONE
[deg] Pointing Dec	-28.330307	-28.35310996828131	Alternating exposures requested	N	N
[deg] Pointing Roll	273.593267	273.810252116321	[s] Primary exposure time	0.000000	3.1
[mm] SIM focus pos	-0.782348	-0.7809083437167272			
[mm] SIM defocus	0	0.001439871863259334			
[mm] SIM translation stage pos	-233.592463	-233.5874344608287			
[mm] SIM translation stage offset	0	-0.005018542100998502			
[s] Observation start time (MET)	302383920.184000	302383544.44402			
Observation start date	2007-08-01T19:30:55	2007-08-01T19:25:44			
[s] Observation end time (MET)	302398920.184000	302399054.74476			
Observation end date	2007-08-01T23:40:55	2007-08-01T23:44:14			
Read mode	TIMED	TIMED			

2.3 Aspect



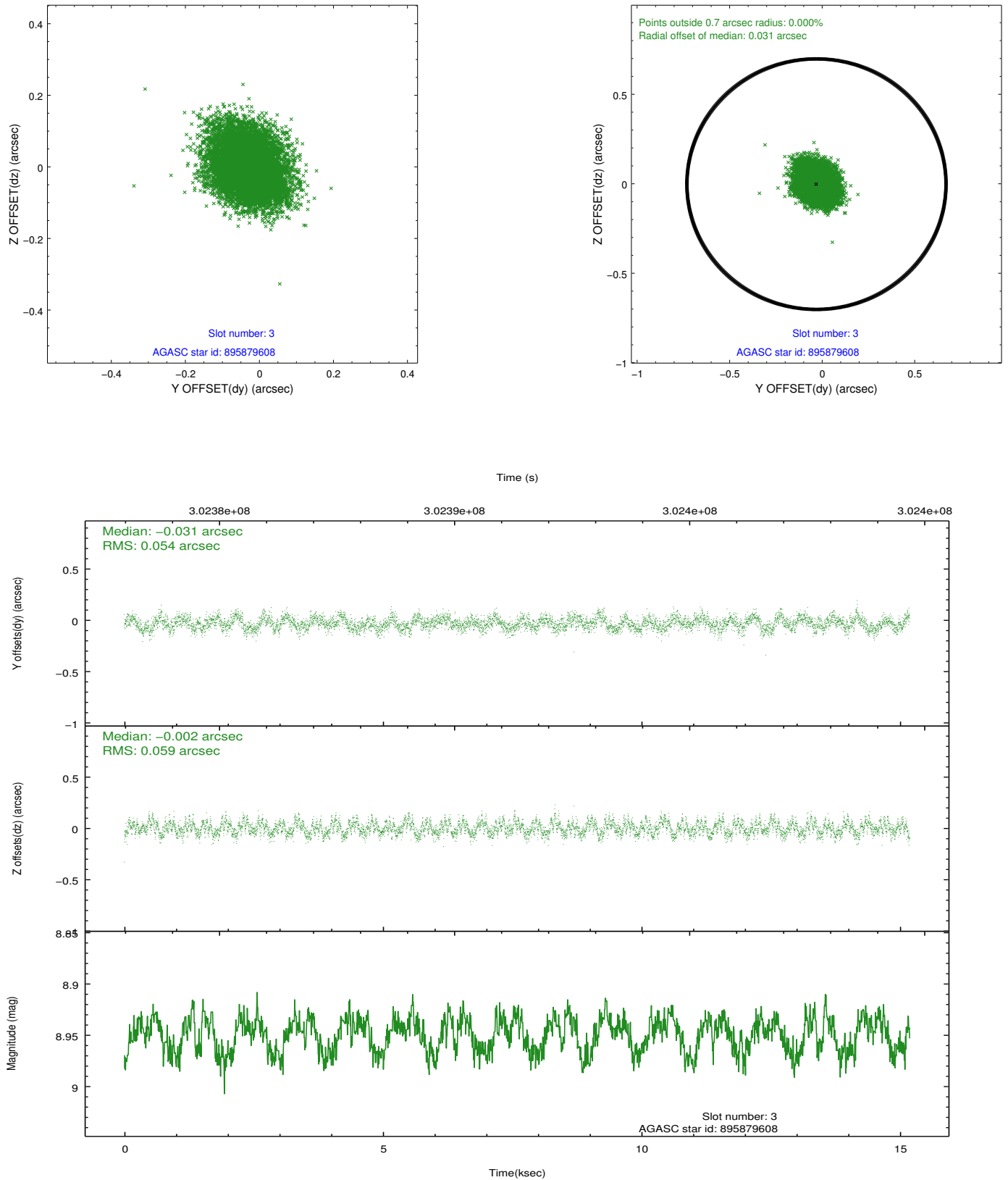


Slot Statistics

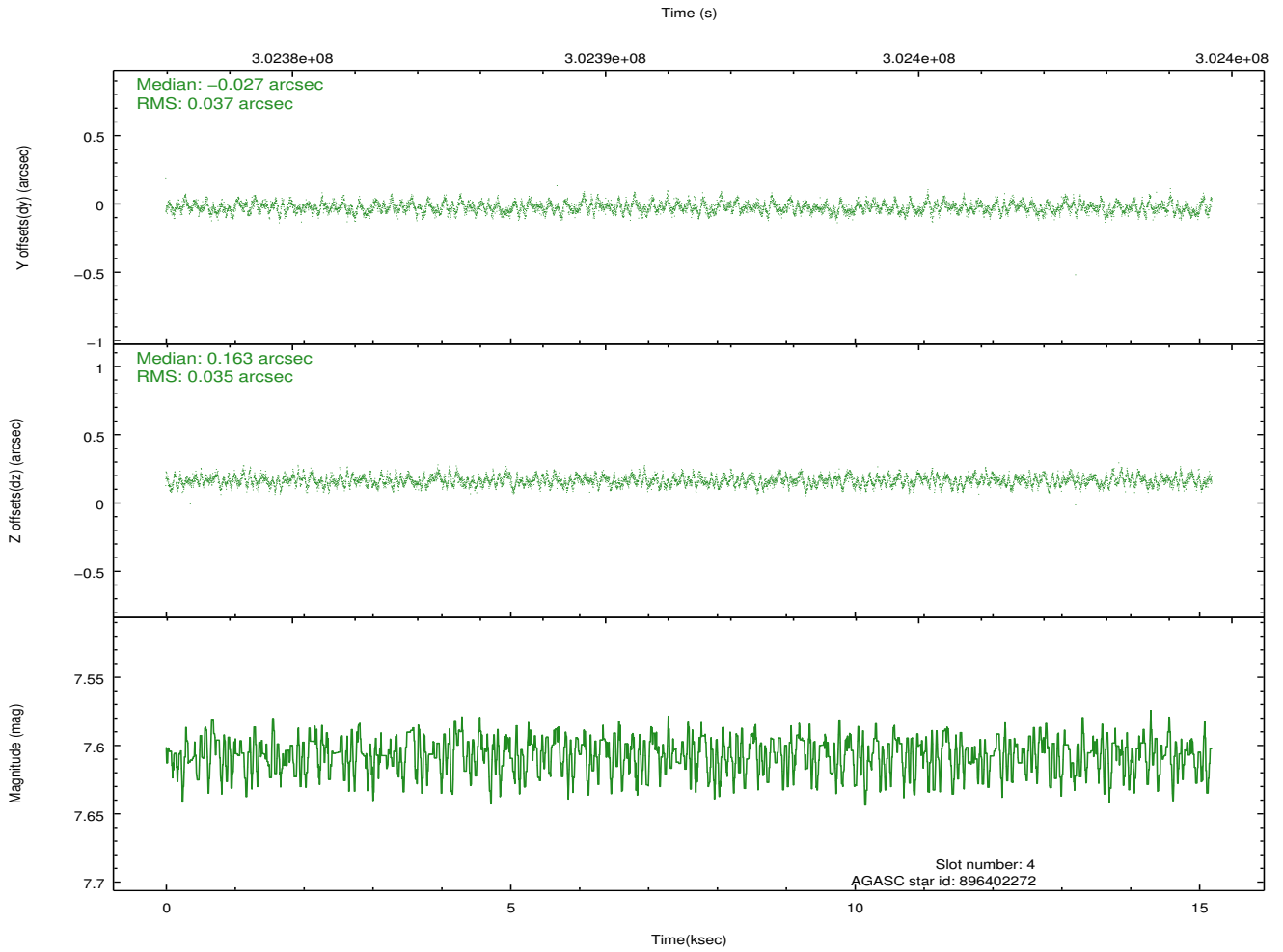
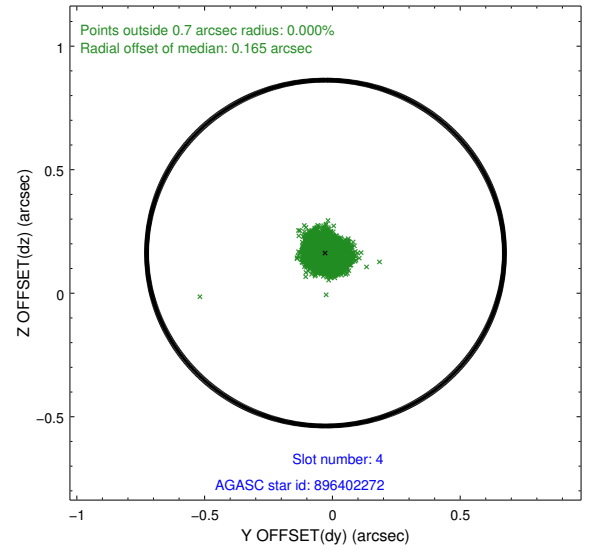
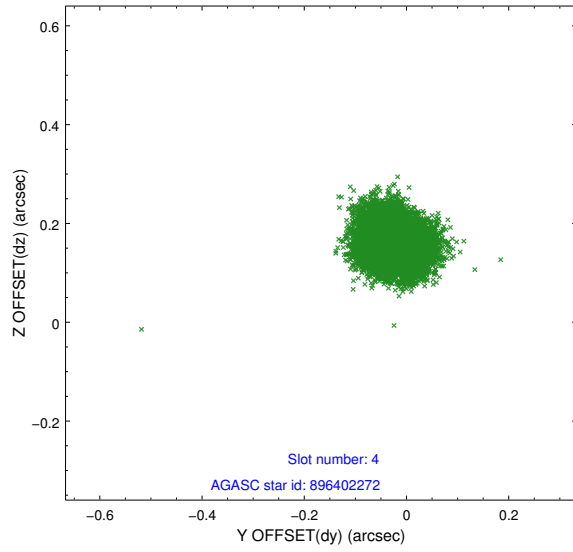
slot	status	id	mag	n_pts	med_dy	med_dz	dr1	dr2	ra	dec	mean_y	mean_z
0	FID	ACIS-I-1	7.23	3705	0.038	-0.007	0.006	0.010	0.000000	0.000000	925.14	-837.95
1	FID	ACIS-I-5	7.22	3705	-0.236	0.036	0.006	0.010	0.000000	0.000000	-1823.09	1059.42
2	FID	ACIS-I-6	7.24	3704	0.107	0.041	0.007	0.011	0.000000	0.000000	390.41	1704.28
3	GUIDE	895879608	8.95	7403	-0.031	-0.002	0.086	0.136	265.708239	-27.843915	-1746.50	123.85
4	GUIDE	896402272	7.61	7409	-0.027	0.163	0.055	0.085	265.637294	-28.313189	-74.66	-206.11
5	GUIDE	896532952	9.03	7405	0.146	0.058	0.076	0.122	266.383644	-28.787617	1783.81	2037.80
6	GUIDE	896538696	6.79	7409	-0.189	-0.050	0.055	0.085	266.298470	-28.325572	105.77	1882.01
7	GUIDE	896402976	7.50	7408	0.100	-0.172	0.071	0.117	265.099474	-28.923203	2016.34	-2034.06

2.4 Star Slots

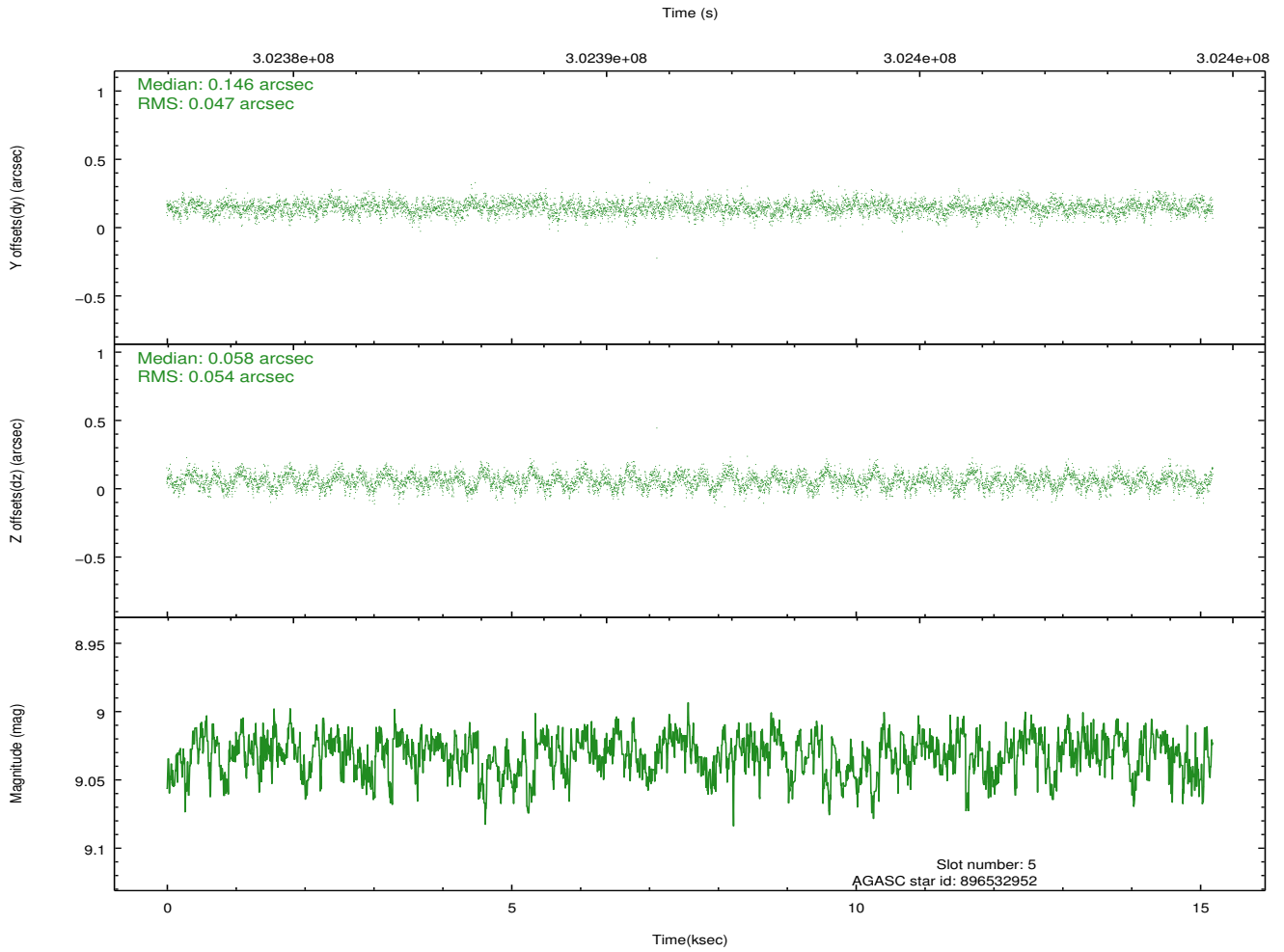
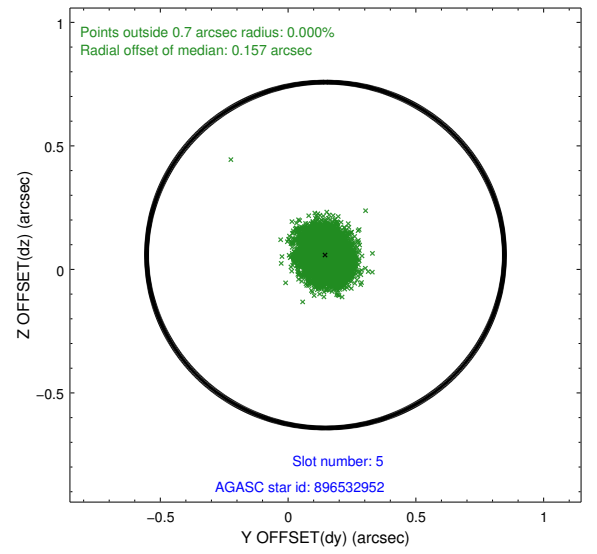
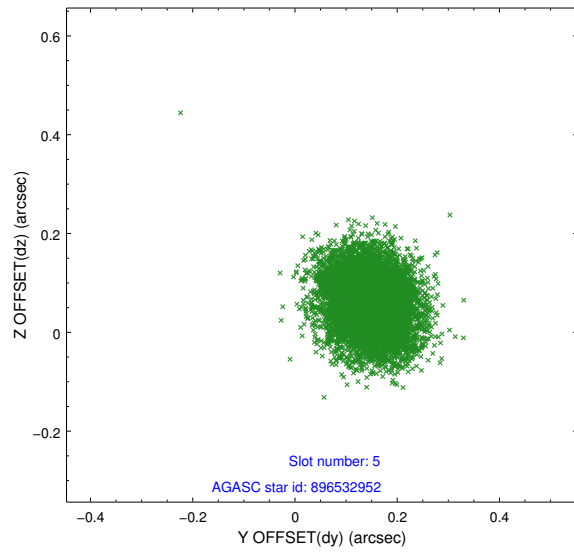
2.4.1 Slot 3



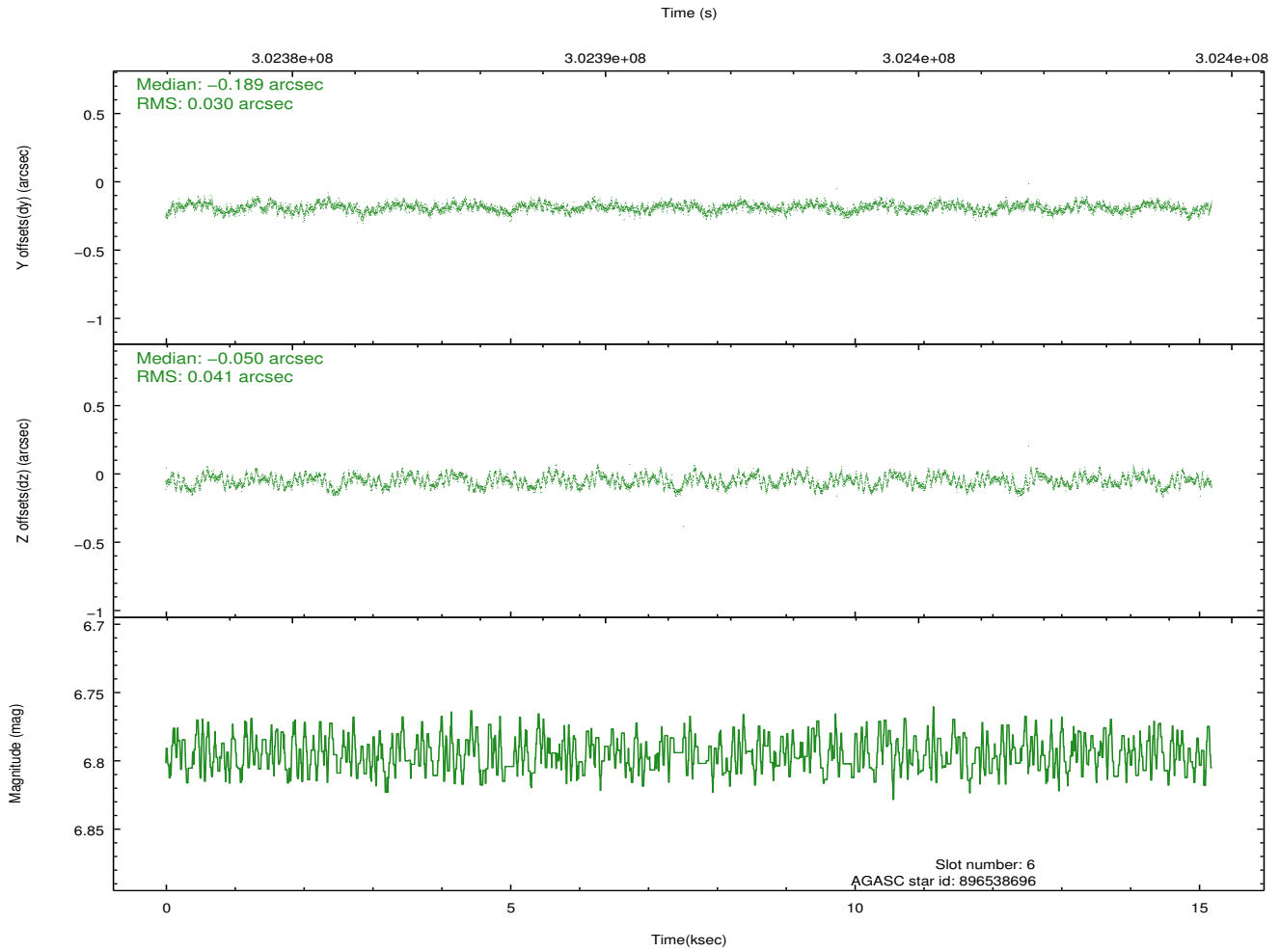
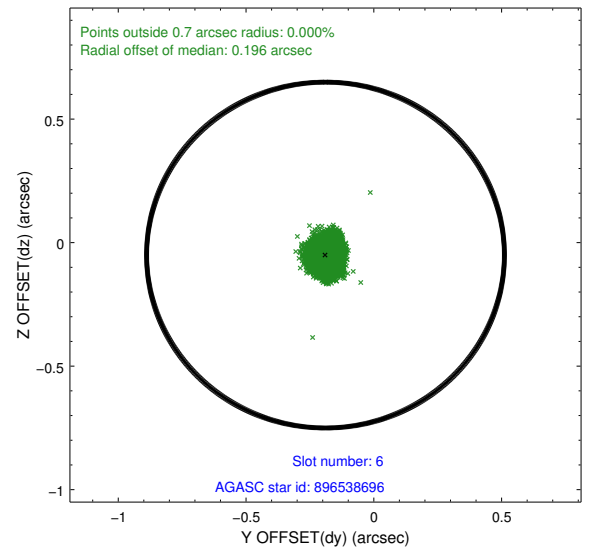
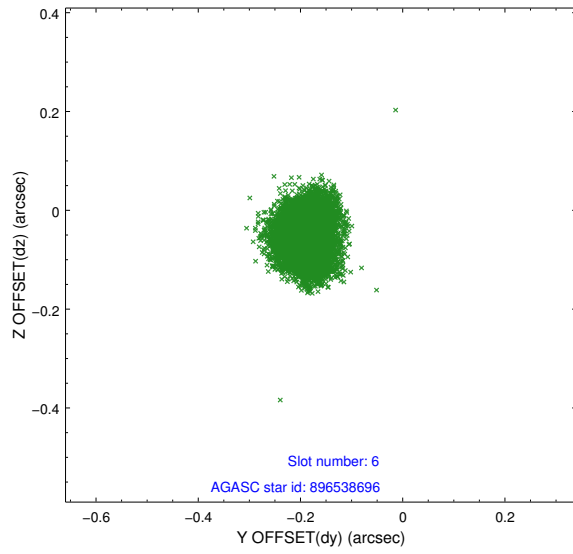
2.4.2 Slot 4



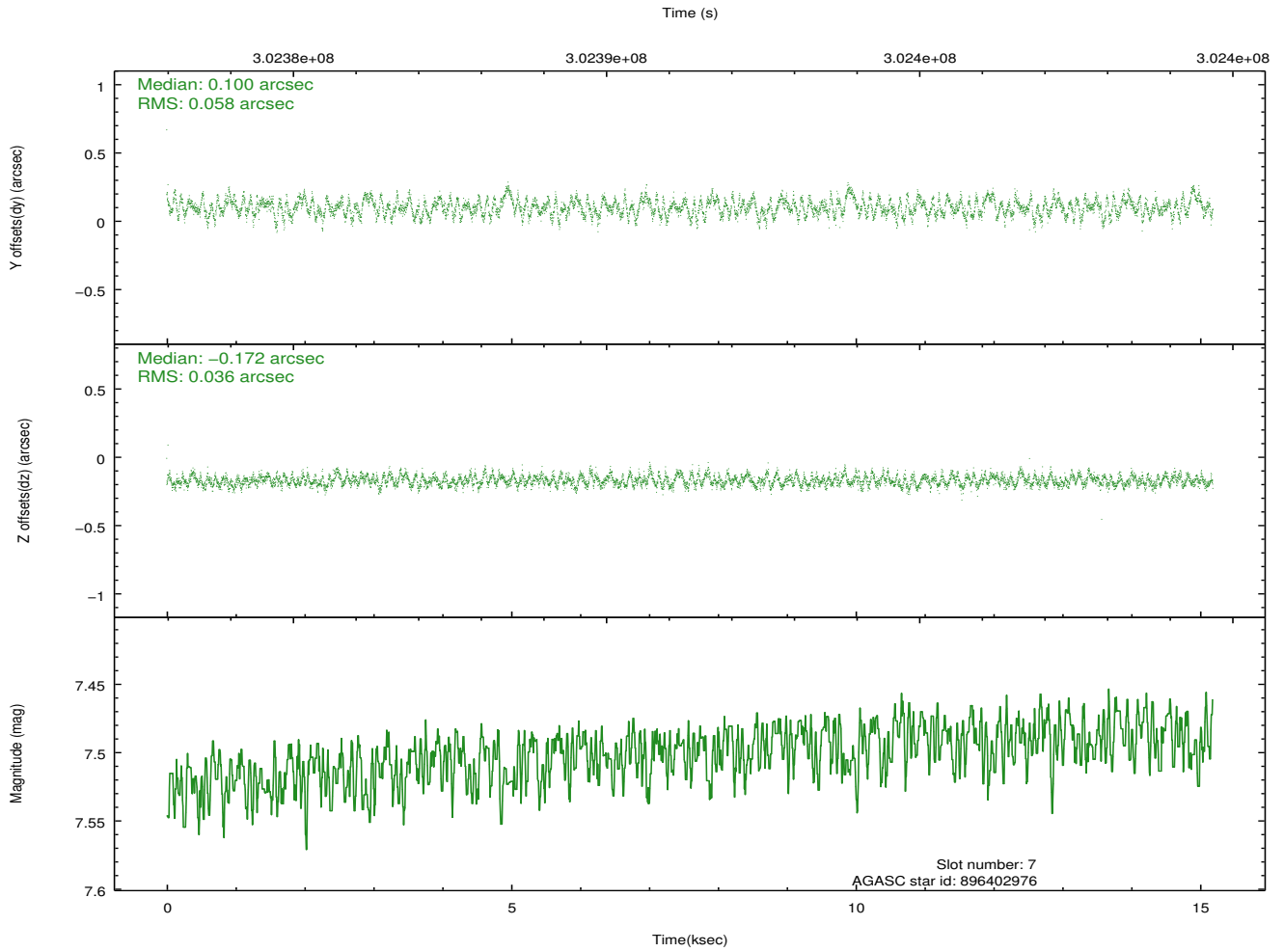
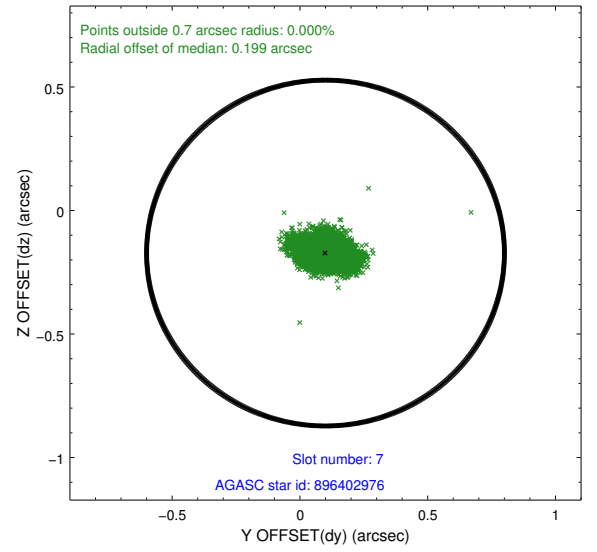
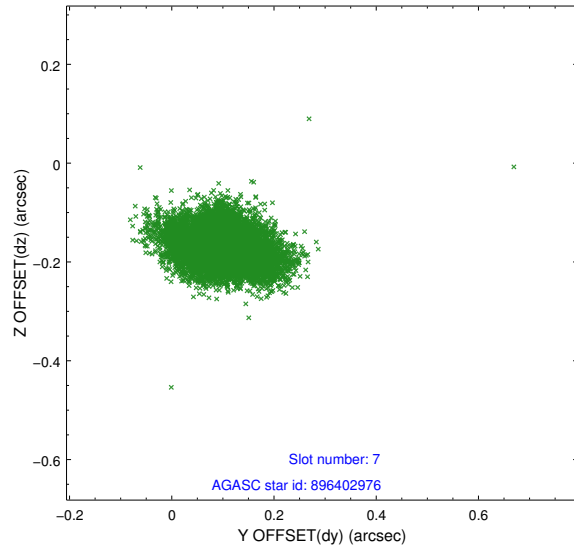
2.4.3 Slot 5



2.4.4 Slot 6

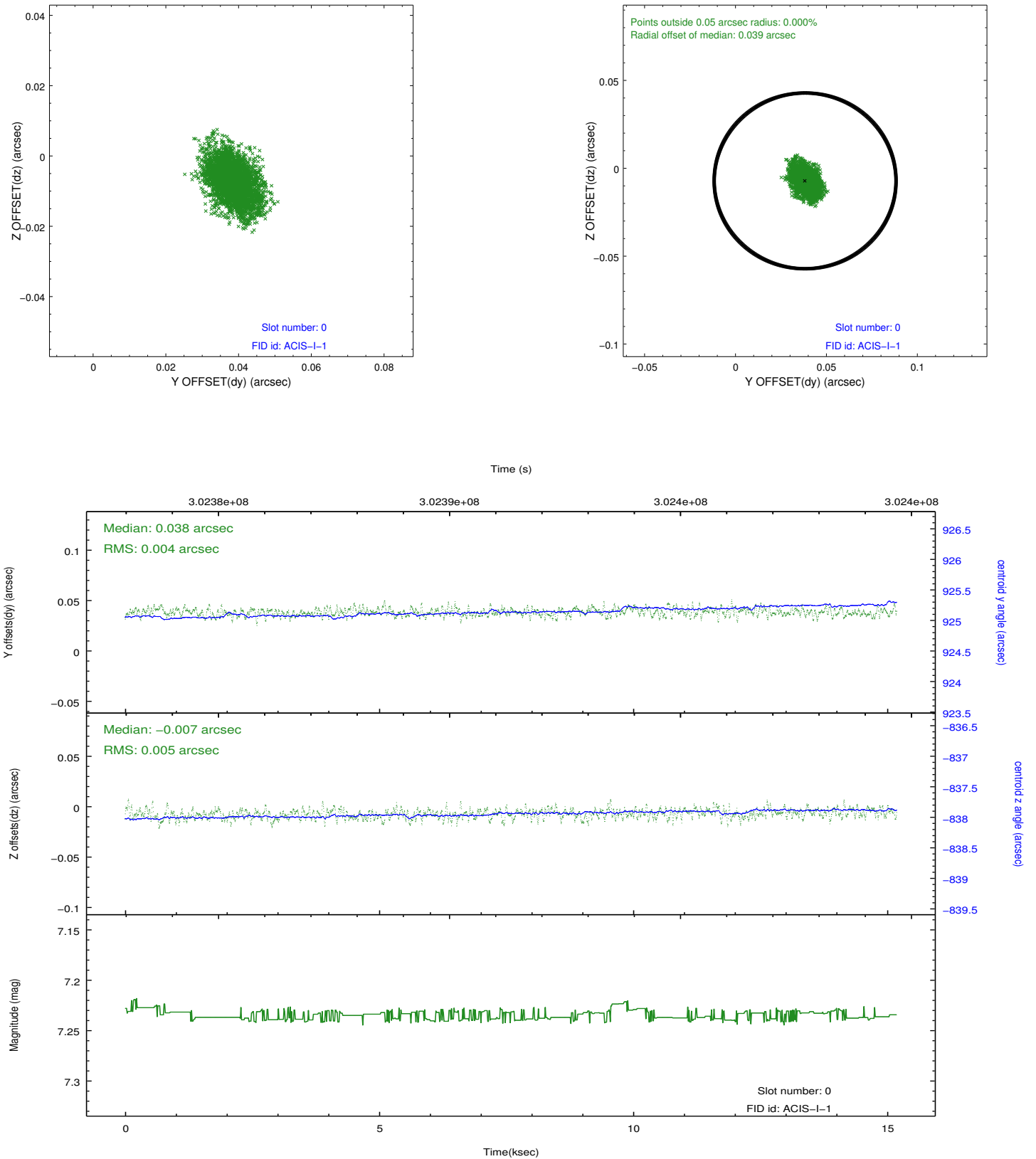


2.4.5 Slot 7

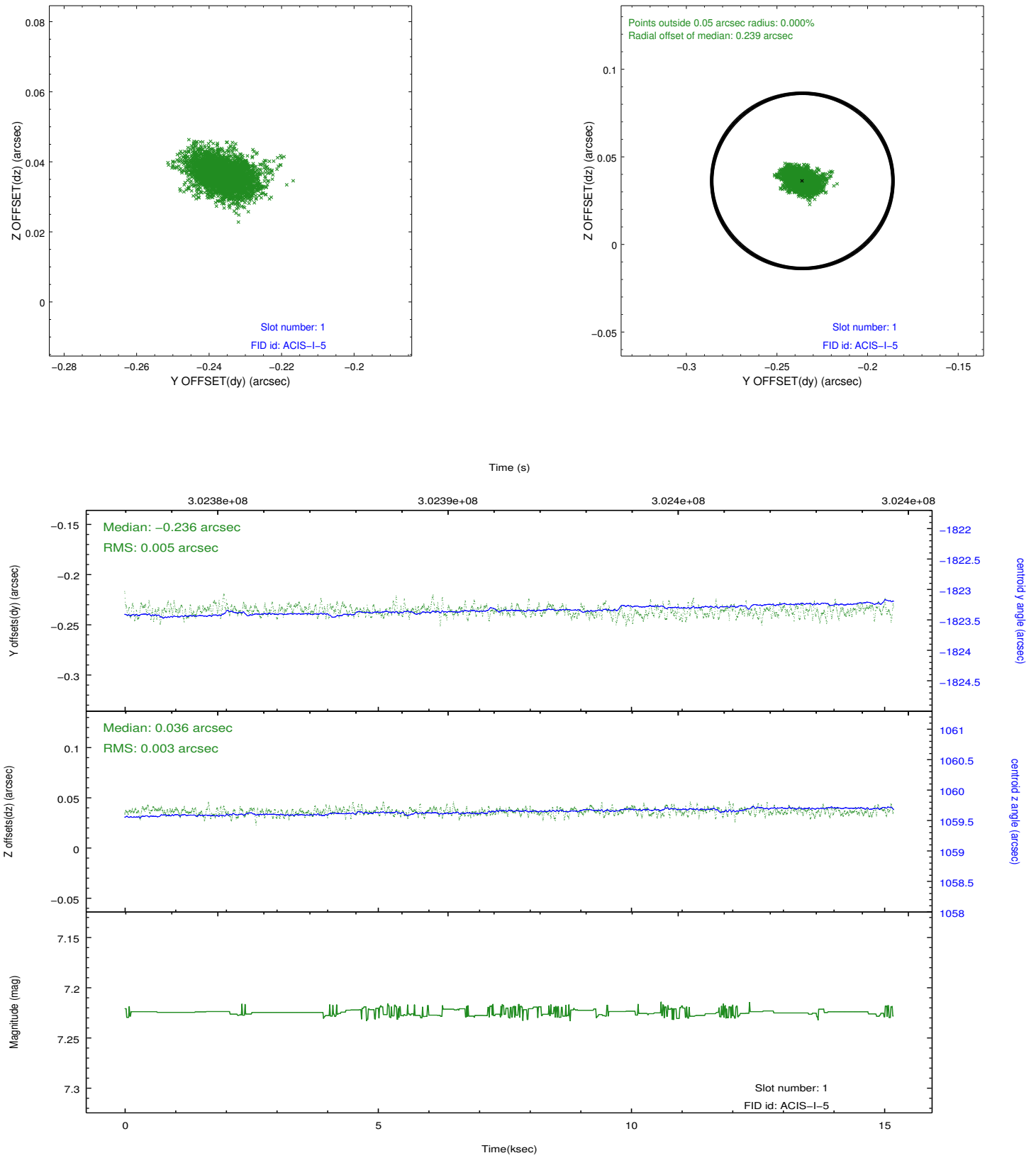


2.5 FID Slots

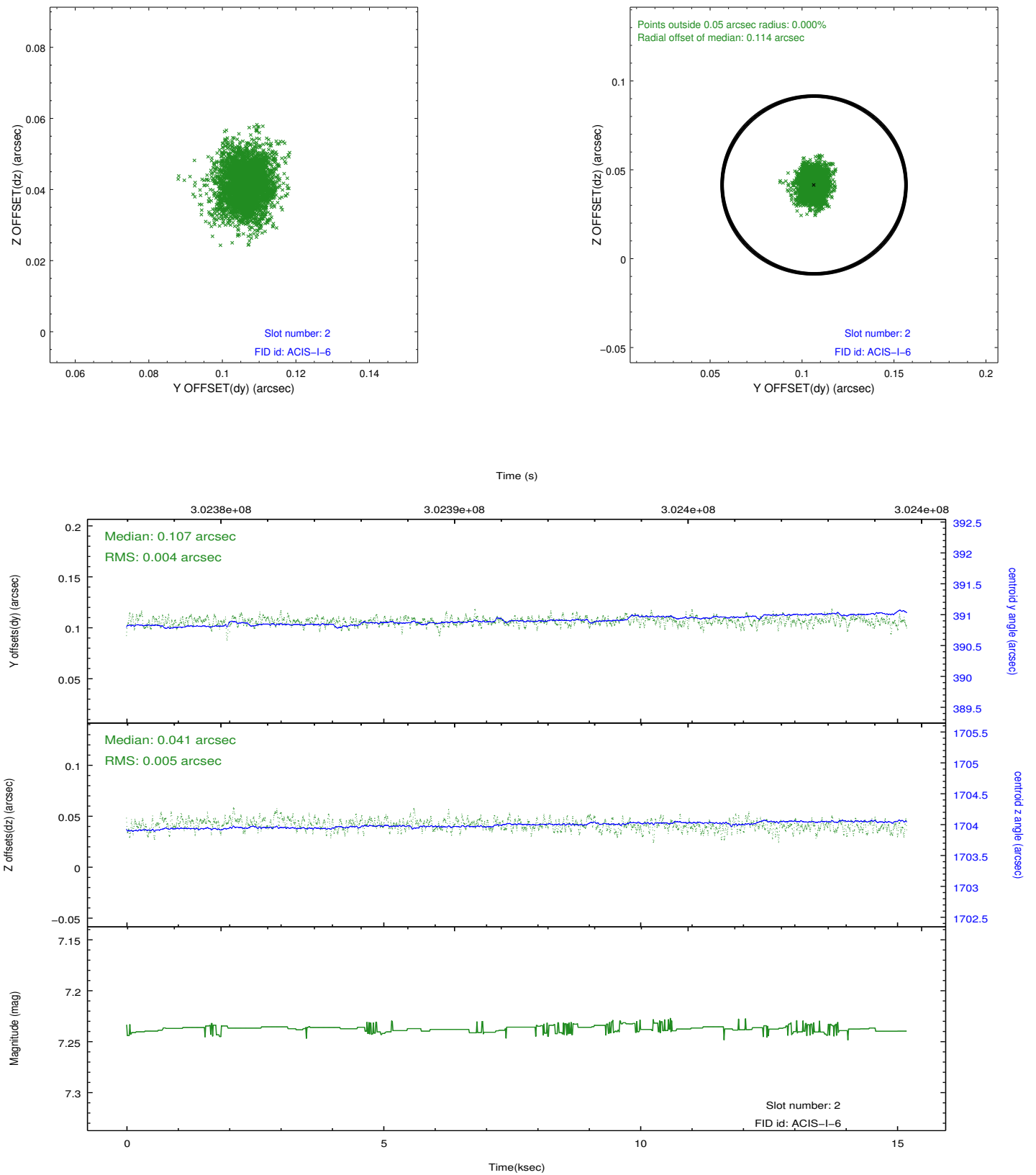
2.5.1 Slot 0



2.5.2 Slot 1



2.5.3 Slot 2



A Summary

A.1 Status

V&V Scientist	Jen Lauer
V&V Date (YYYY-MM-DD)	2012.05.01
V&V Edition	1
V&V Disposition and Status	OK
V&V Charge Time	14.7807181

A.2 Comments

Roll constraint of 95 +/- 10 degrees met.