

V&V Reference Report

L2 ASCDS Version : 8.4.3.1

Observation 7715 - L2 Version 2
Chandra X-Ray Center

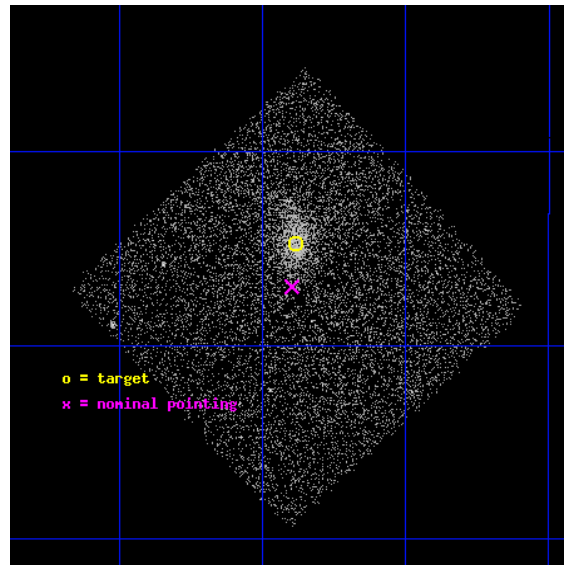
L2 Processing Date : Apr 14 2012

Contents

1	Front	2
2	OBI	3
2.1	OBI	3
2.1.1	Images	3
2.1.2	Bias	3
2.1.3	Parameters	4
2.1.4	Events	4
2.2	Compared Parameters	5
2.3	Aspect	6
2.4	Star Slots	9
2.4.1	Slot 3	9
2.4.2	Slot 4	10
2.4.3	Slot 5	11
2.4.4	Slot 6	12
2.4.5	Slot 7	13
2.5	FID Slots	14
2.5.1	Slot 0	14
2.5.2	Slot 1	15
2.5.3	Slot 2	16
A	Summary	17
A.1	Status	17
A.2	Comments	17

1 Front

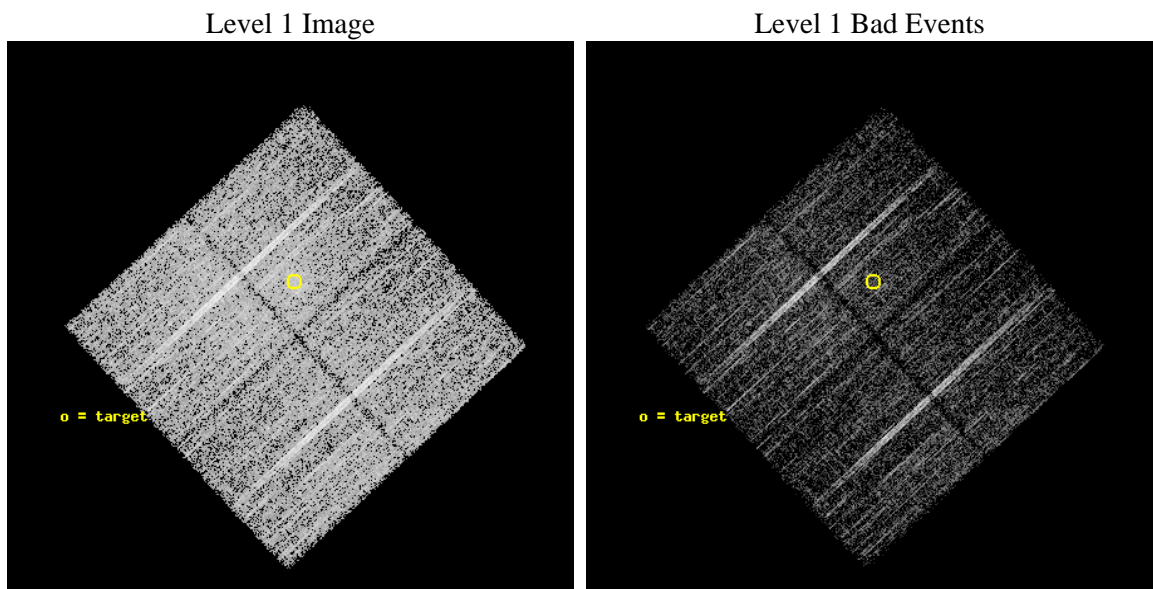
seq_num	701383	Sequence number
obs_id	7715	Observation id
title	Snapshot Survey for X-ray Outbursts in Rich Clusters of Galaxies	P
observer	Professor Gordon Garmire	Principal investigator
object	ABELL370	Source name
dtcycle	0	
cycle	P	events from which exps? Prim/Second/Both
ra_targ	39.97125	Observer's specified target RA [deg]
dec_targ	-1.579167	Observer's specified target Dec [deg]
ra_nom	39.974282489638	Nominal RA [deg]
dec_nom	-1.6163469464093	Nominal Dec [deg]
roll_nom	317.20951321088	Nominal Roll [deg]
revision	2	Processing version of data
ontime	7179.6000552177	Sum of GTIs [s]
livetime	7085.7932949517	Livetime [s]
ontime0	7176.4590648413	Sum of GTIs [s]
ontime1	7179.6000552177	Sum of GTIs [s]
ontime2	7179.6000552177	Sum of GTIs [s]
ontime3	7179.6000552177	Sum of GTIs [s]
l2events	14120	Number of level 2 events



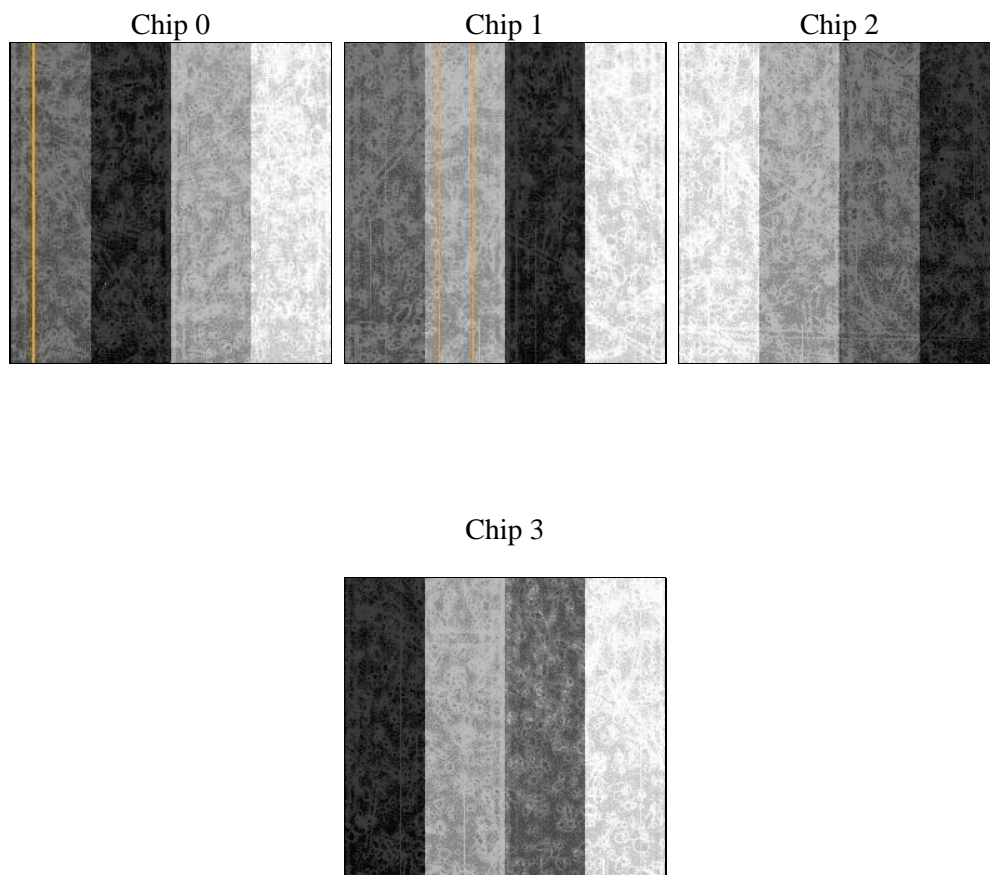
2 OBI

2.1 OBI

2.1.1 Images



2.1.2 Bias



2.1.3 Parameters

obi_num	0	Obi number	sched_exp_time	7000.000000	[s] Scheduled observation exposure time
ascdsver	8.4.3.1	Processing system revision	ontime	7179.6000552177	Sum of GTIs [s]
caldsver	4.4.9	 	ontime0	7176.4590648413	Sum of GTIs [s]
date	2012-04-14T04:29:43	Date and time of file creation	ontime1	7179.6000552177	Sum of GTIs [s]
revision	2	Processing version of data	ontime2	7179.6000552177	Sum of GTIs [s]
			ontime3	7179.6000552177	Sum of GTIs [s]
			l1events	189327	Number of level 1 events

2.1.4 Events

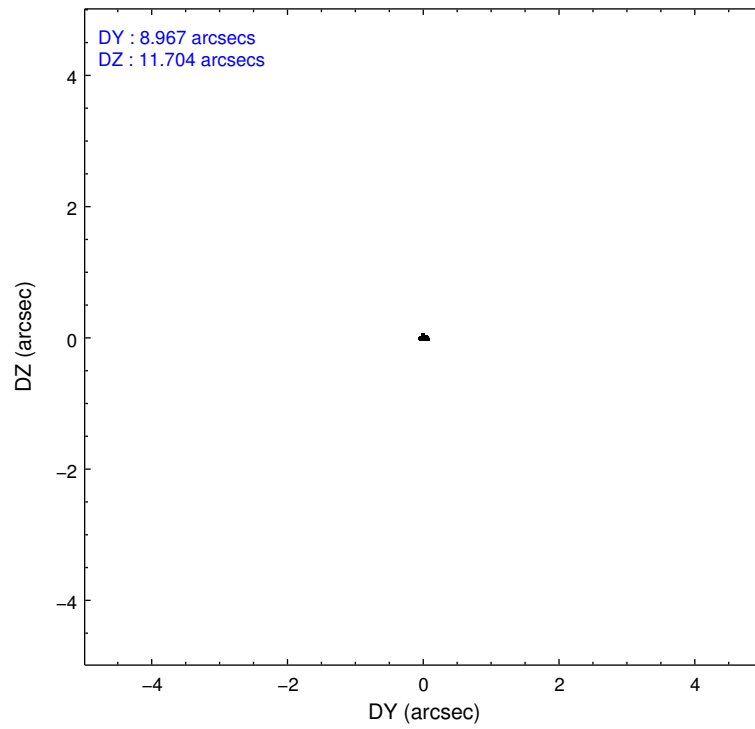
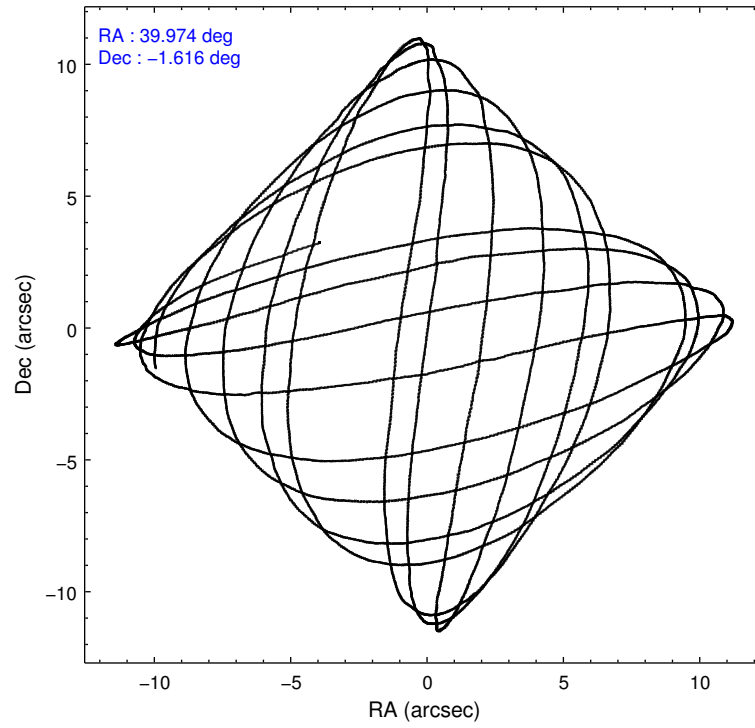
	ccd 0	ccd 1	ccd 2	ccd 3
level 1 events	45359	43107	53415	47446
rejected events	41397	38965	49499	41869
rejected %	91%	90%	92%	88%

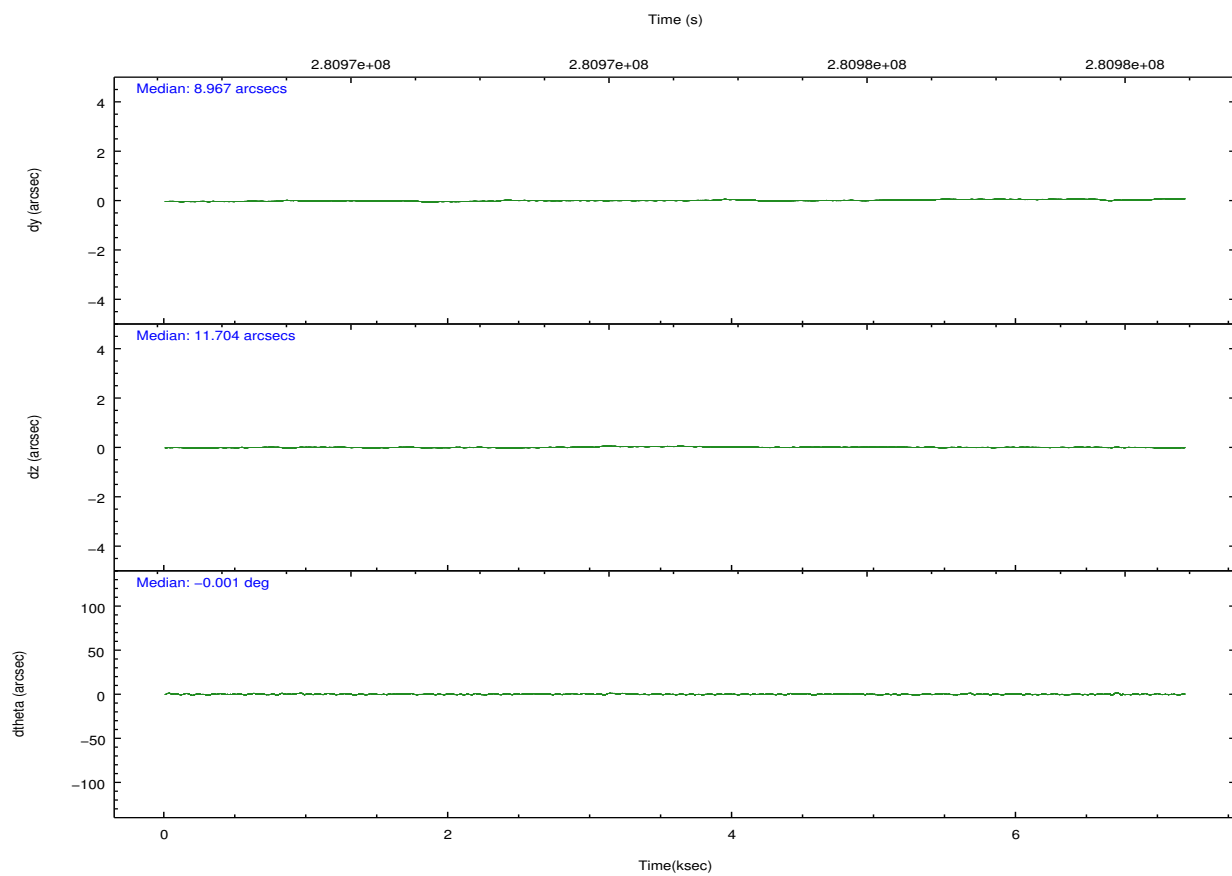
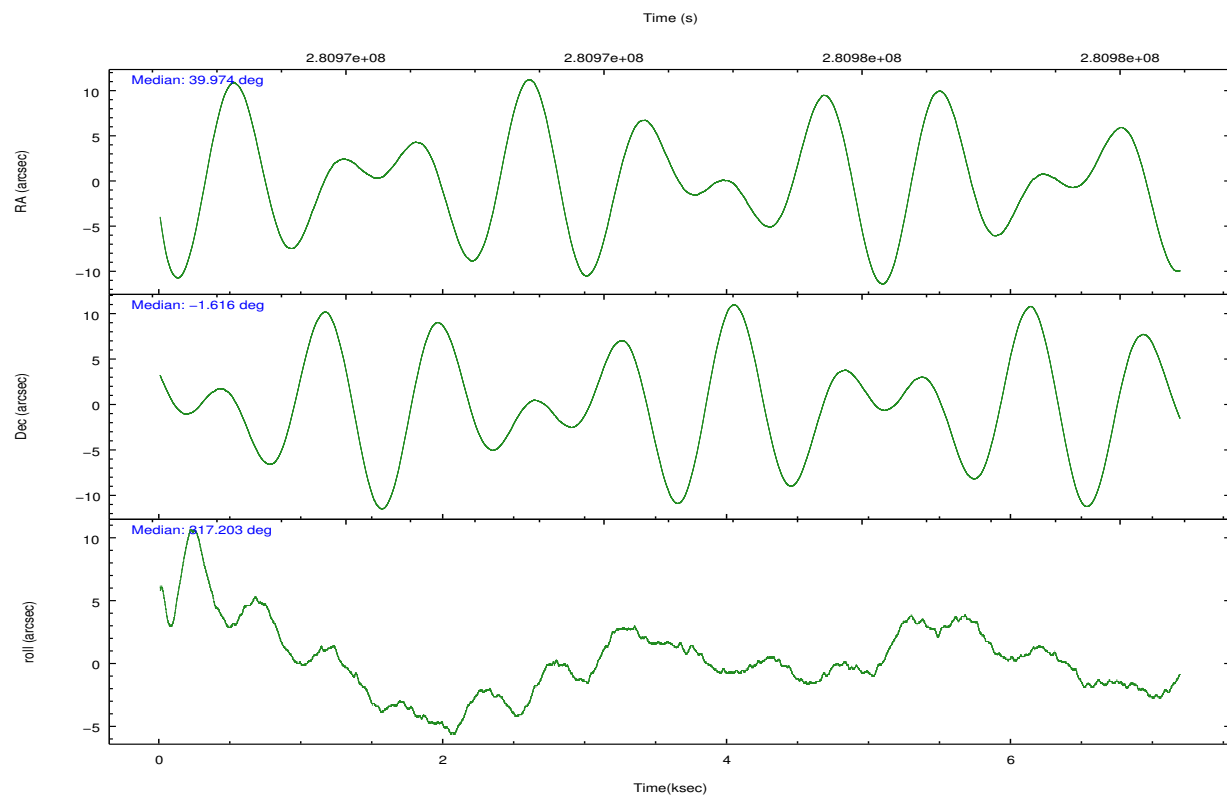
	ccd 0	ccd 1	ccd 2	ccd 3
grade 0 events	1596	1595	1624	3073
	3%	3%	3%	6%
grade 1 events	24	22	16	34
	0%	0%	0%	0%
grade 2 events	903	896	907	993
	1%	2%	1%	2%
grade 3 events	453	518	421	488
	0%	1%	0%	1%
grade 4 events	434	485	435	476
	0%	1%	0%	1%
grade 5 events	719	896	716	913
	1%	2%	1%	1%
grade 6 events	622	697	577	618
	1%	1%	1%	1%
grade 7 events	40608	37998	48719	40851
	89%	88%	91%	86%

2.2 Compared Parameters

Parameter	Planned	Actual	Parameter	Planned	Actual
Instrument	ACIS	ACIS	Obspar format version number	7	7
Detector	ACIS-0123	ACIS-0123	Obspar file type	PREDICTED	ACTUAL
Grating	NONE	NONE	Obspar update status	NONE	UPDATED
Data mode	VFAINT	VFAINT	Number of optional ACIS chips dropped	0	0
Observation mode	POINTING	POINTING	On-chip summing requested	N	N
[deg] Pointing RA	39.947566	39.9742824896381	Subarray requested	NONE	NONE
[deg] Pointing Dec	-1.610420	-1.616346946409262	Alternating exposures requested	N	N
[deg] Pointing Roll	317.000062	317.2095132108788	[s] Primary exposure time	0.000000	3.1
[mm] SIM focus pos	-0.782348	-0.7809083437167272			
[mm] SIM defocus	0	0.001439871863259334			
[mm] SIM translation stage pos	-233.592463	-233.5874344608287			
[mm] SIM translation stage offset	0	-0.005018542100998502			
[s] Observation start time (MET)	280971106.184000	280970136.7119			
Observation start date	2006-11-26T23:30:41	2006-11-26T23:15:36			
[s] Observation end time (MET)	280978106.184000	280979367.86234			
Observation end date	2006-11-27T01:27:21	2006-11-27T01:49:27			
Read mode	TIMED	TIMED			

2.3 Aspect



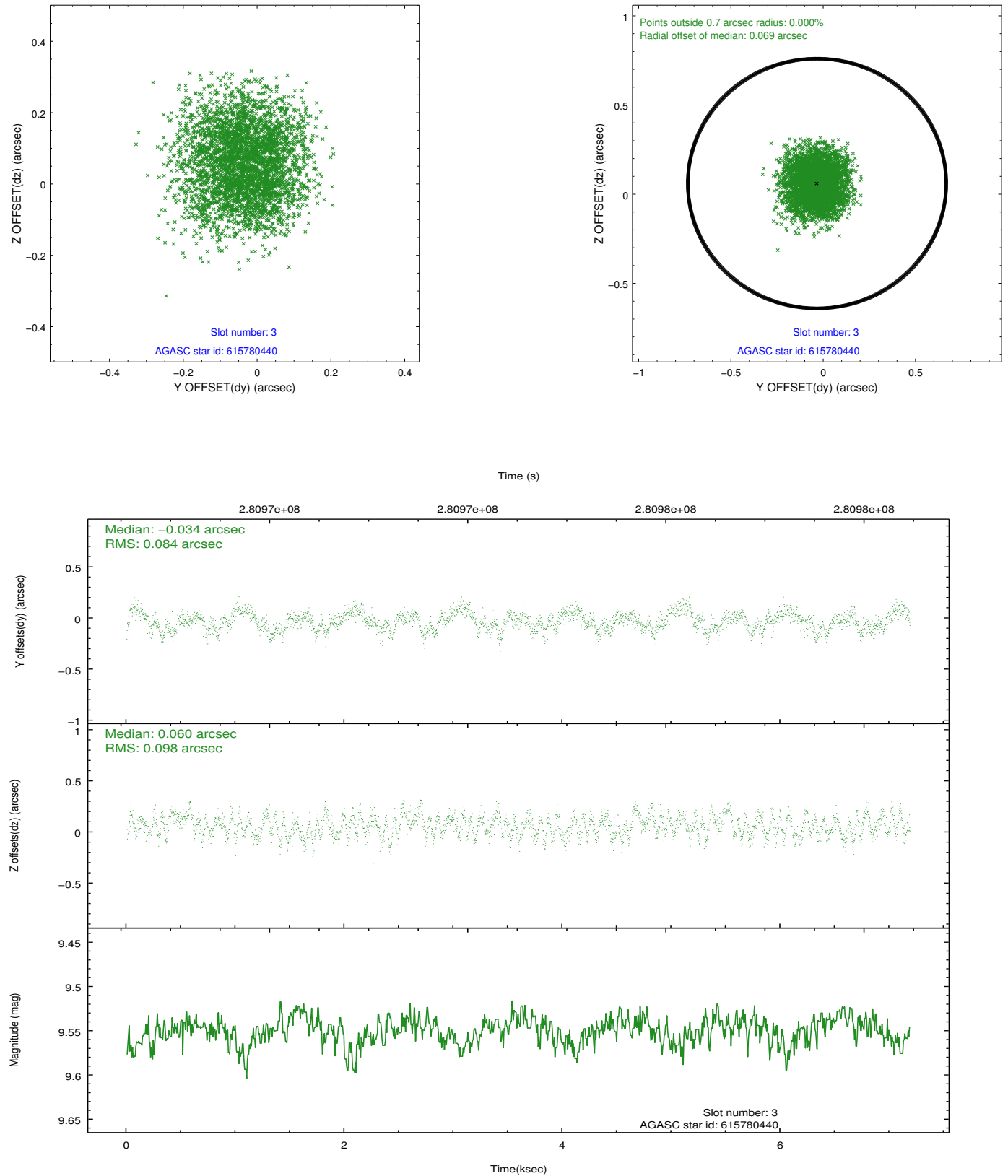


Slot Statistics

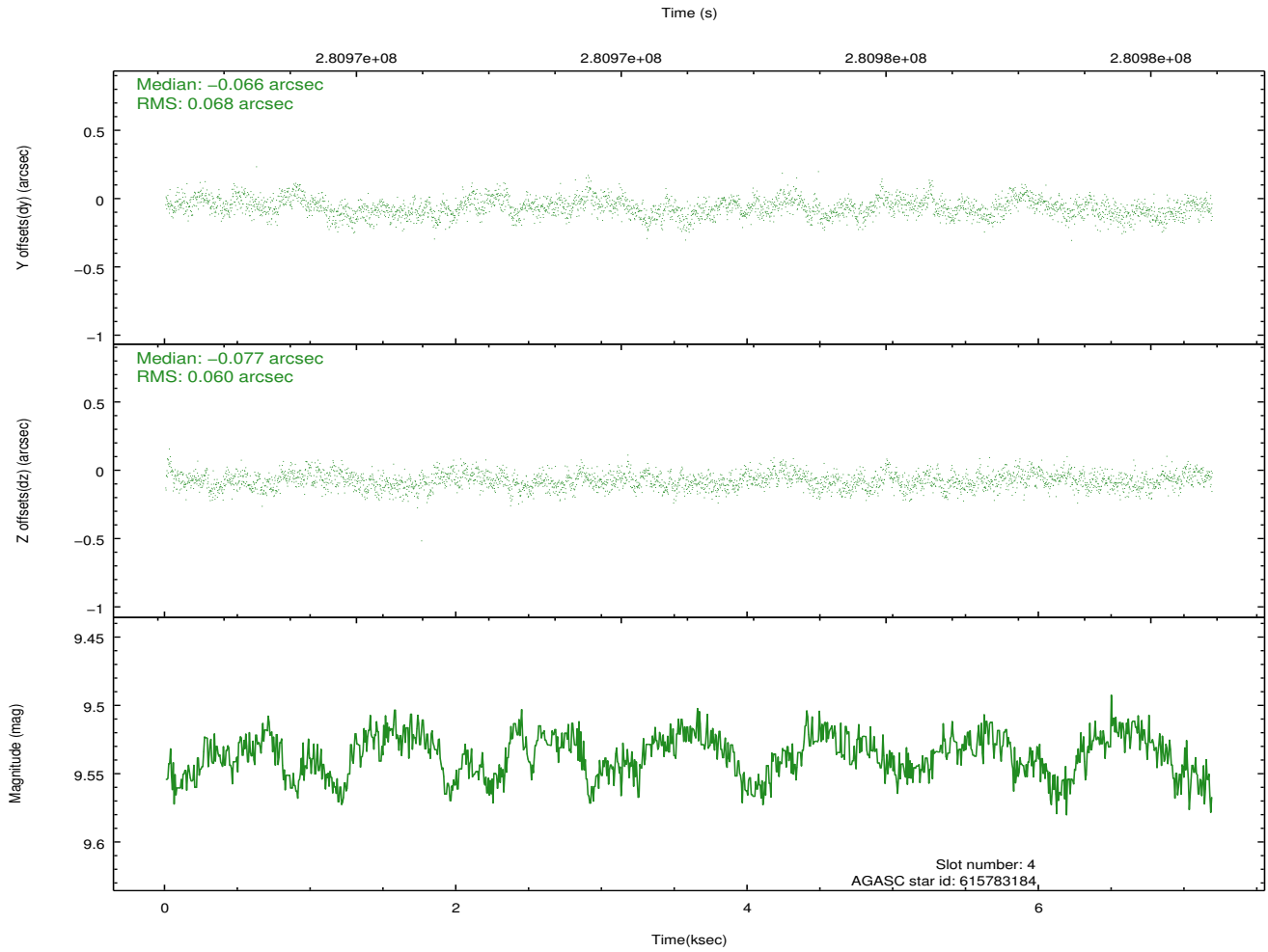
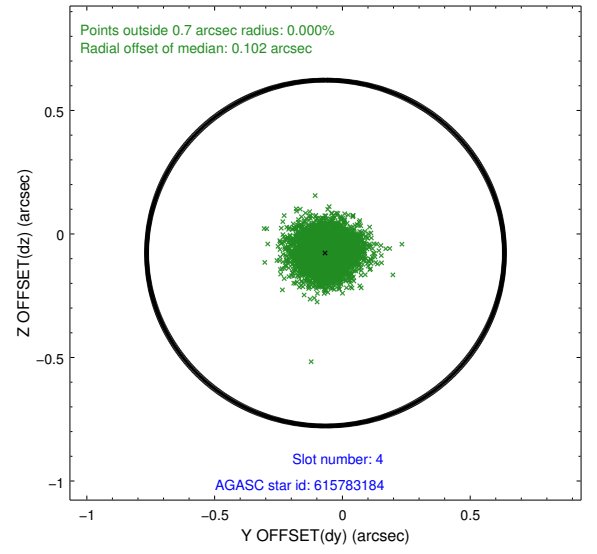
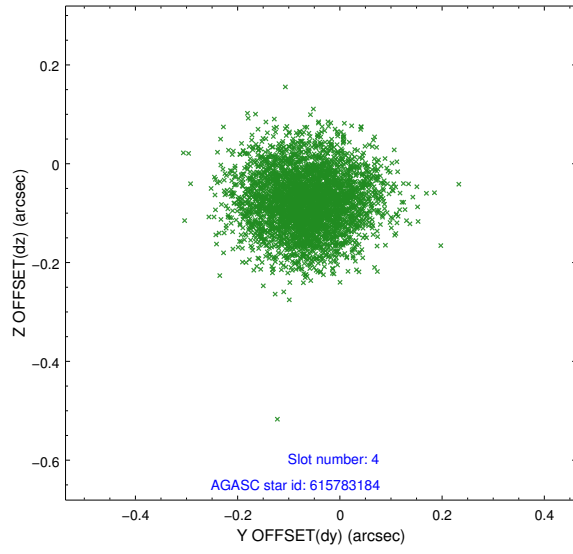
slot	status	id	mag	n_pts	med_dy	med_dz	dr1	dr2	ra	dec	mean_y	mean_z
0	FID	ACIS-I-1	7.25	1753	0.066	-0.045	0.006	0.011	0.000000	0.000000	930.70	-835.28
1	FID	ACIS-I-5	7.23	1753	-0.213	0.066	0.006	0.010	0.000000	0.000000	-1817.20	1061.98
2	FID	ACIS-I-6	7.25	1753	0.055	0.049	0.007	0.011	0.000000	0.000000	395.42	1707.32
3	GUIDE	615780440	9.55	3502	-0.034	0.060	0.140	0.216	39.242130	-1.837899	-1296.71	-2330.15
4	GUIDE	615783184	9.54	3502	-0.066	-0.077	0.098	0.154	39.671705	-1.242821	-1628.66	290.05
5	GUIDE	615909224	9.66	3502	0.043	-0.154	0.141	0.216	40.353386	-1.135580	-97.59	2246.37
6	GUIDE	615914024	8.11	3506	0.056	0.055	0.102	0.169	40.171214	-1.925110	1361.84	-278.75
7	GUIDE	615915488	9.24	3500	0.003	0.120	0.110	0.181	40.321812	-1.243760	85.59	1884.15

2.4 Star Slots

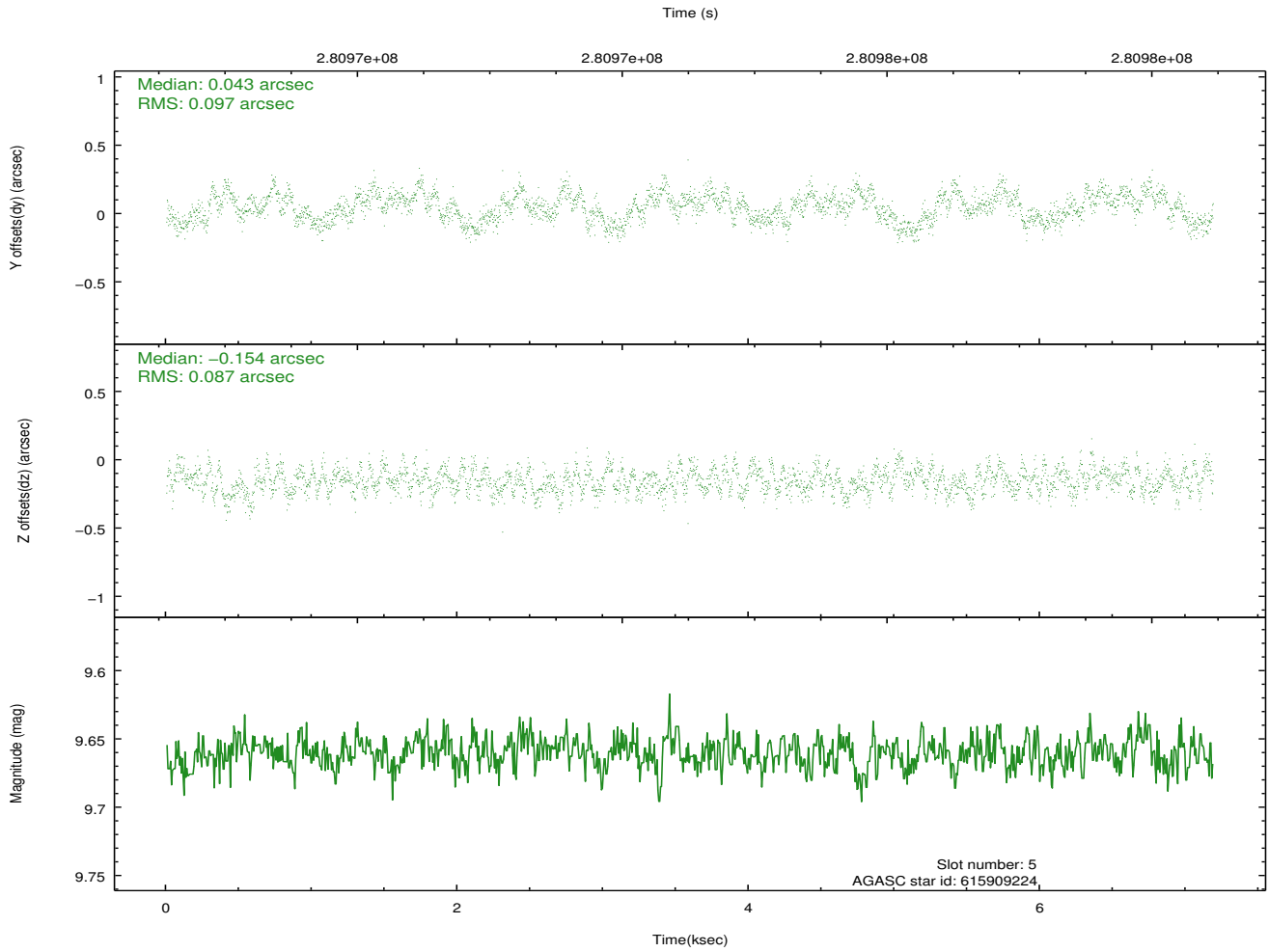
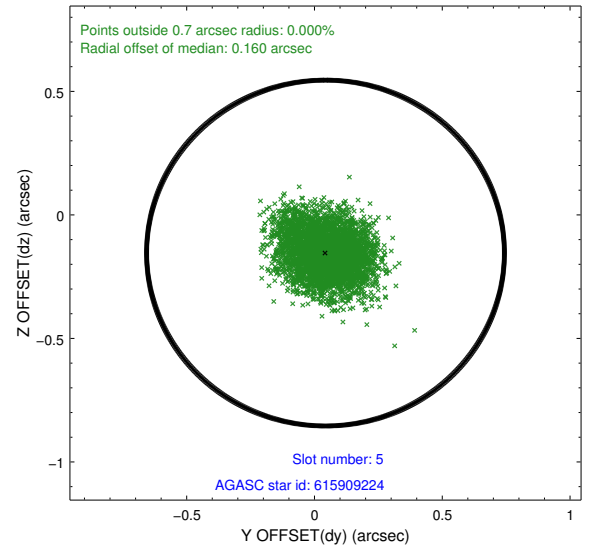
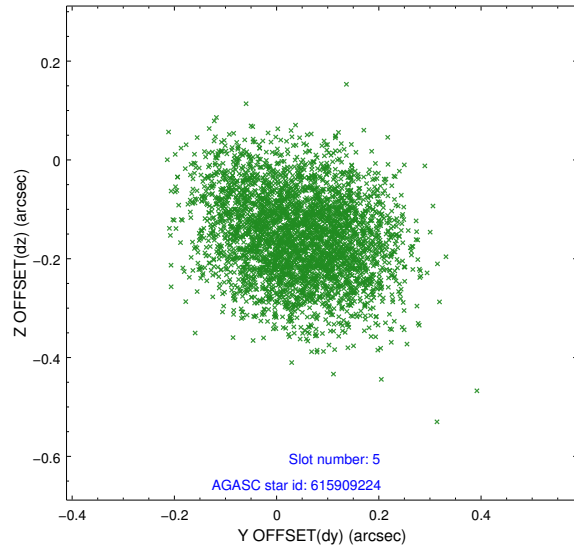
2.4.1 Slot 3



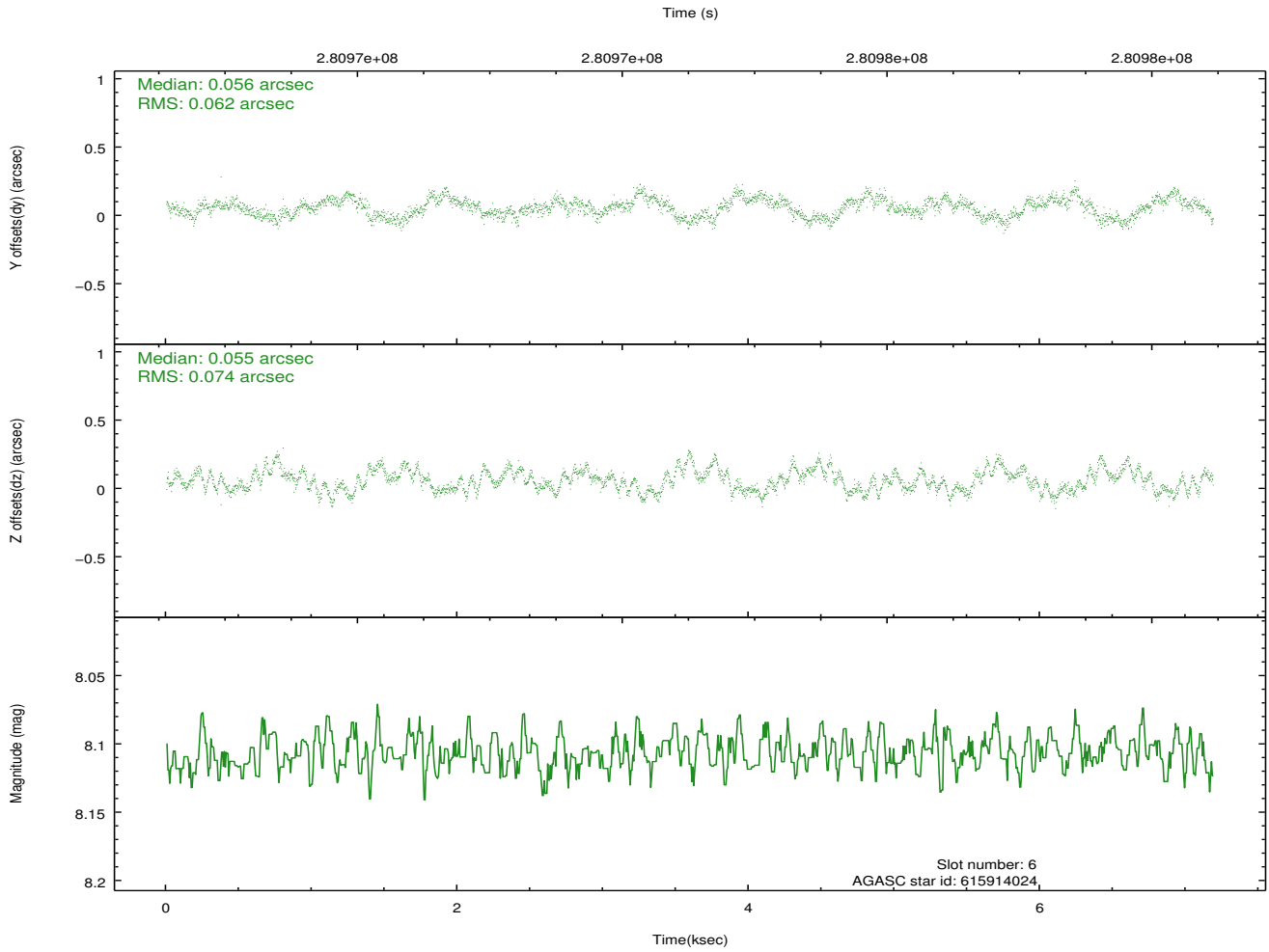
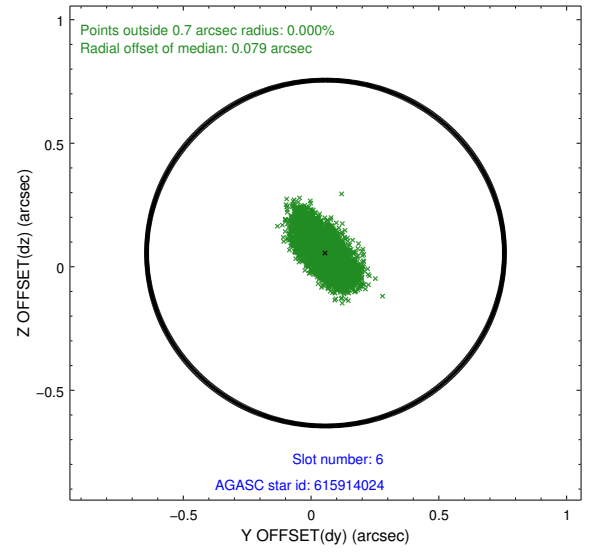
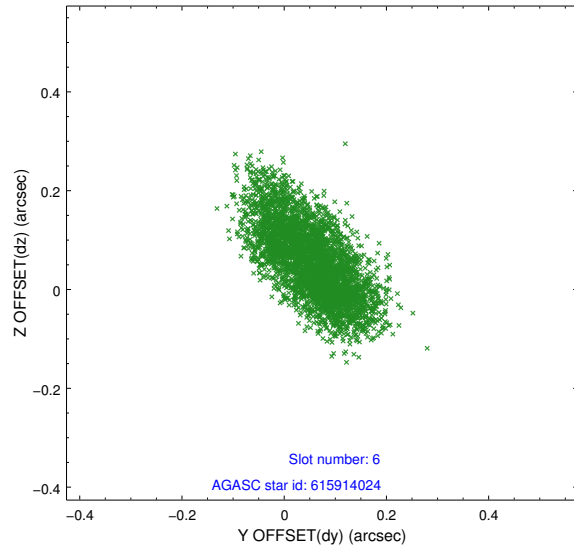
2.4.2 Slot 4



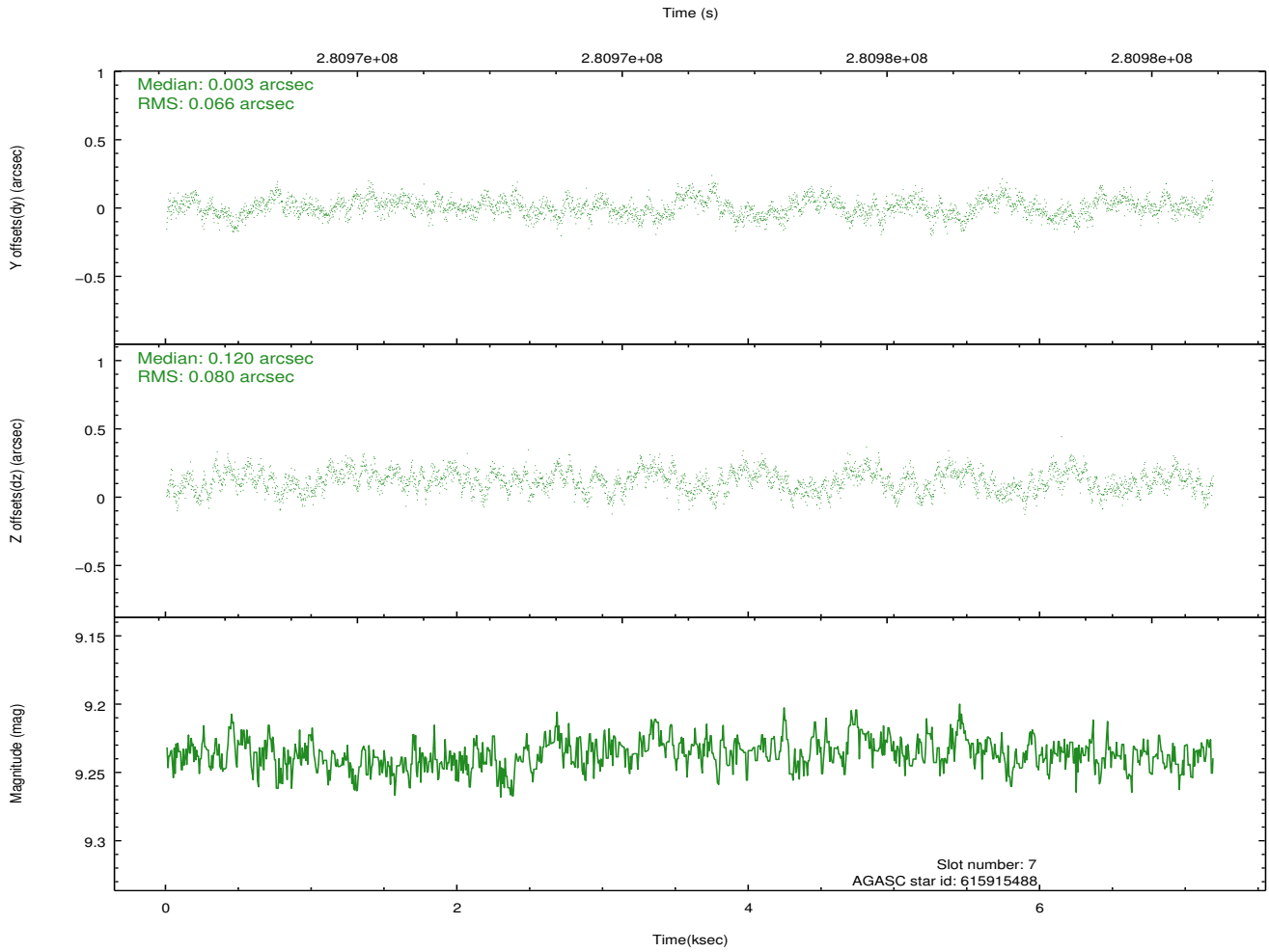
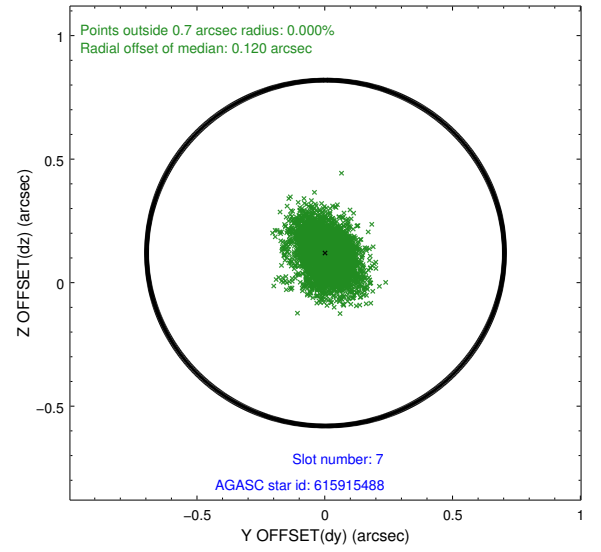
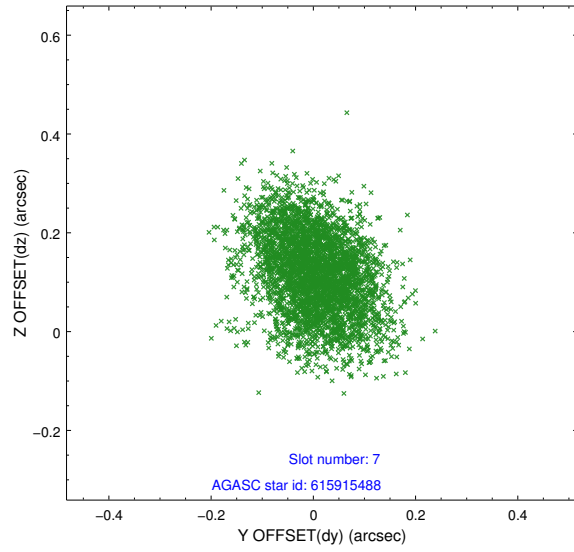
2.4.3 Slot 5



2.4.4 Slot 6

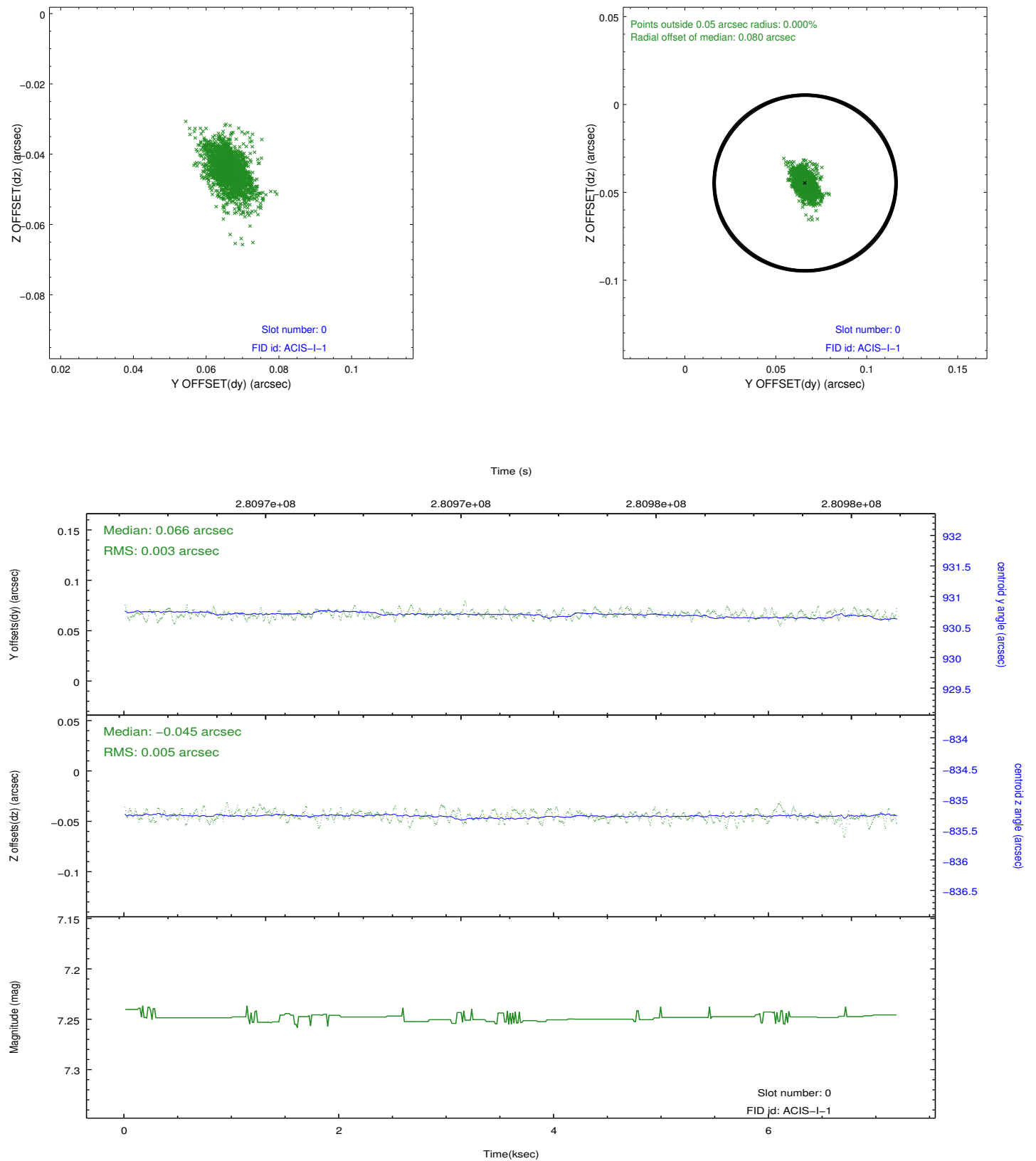


2.4.5 Slot 7

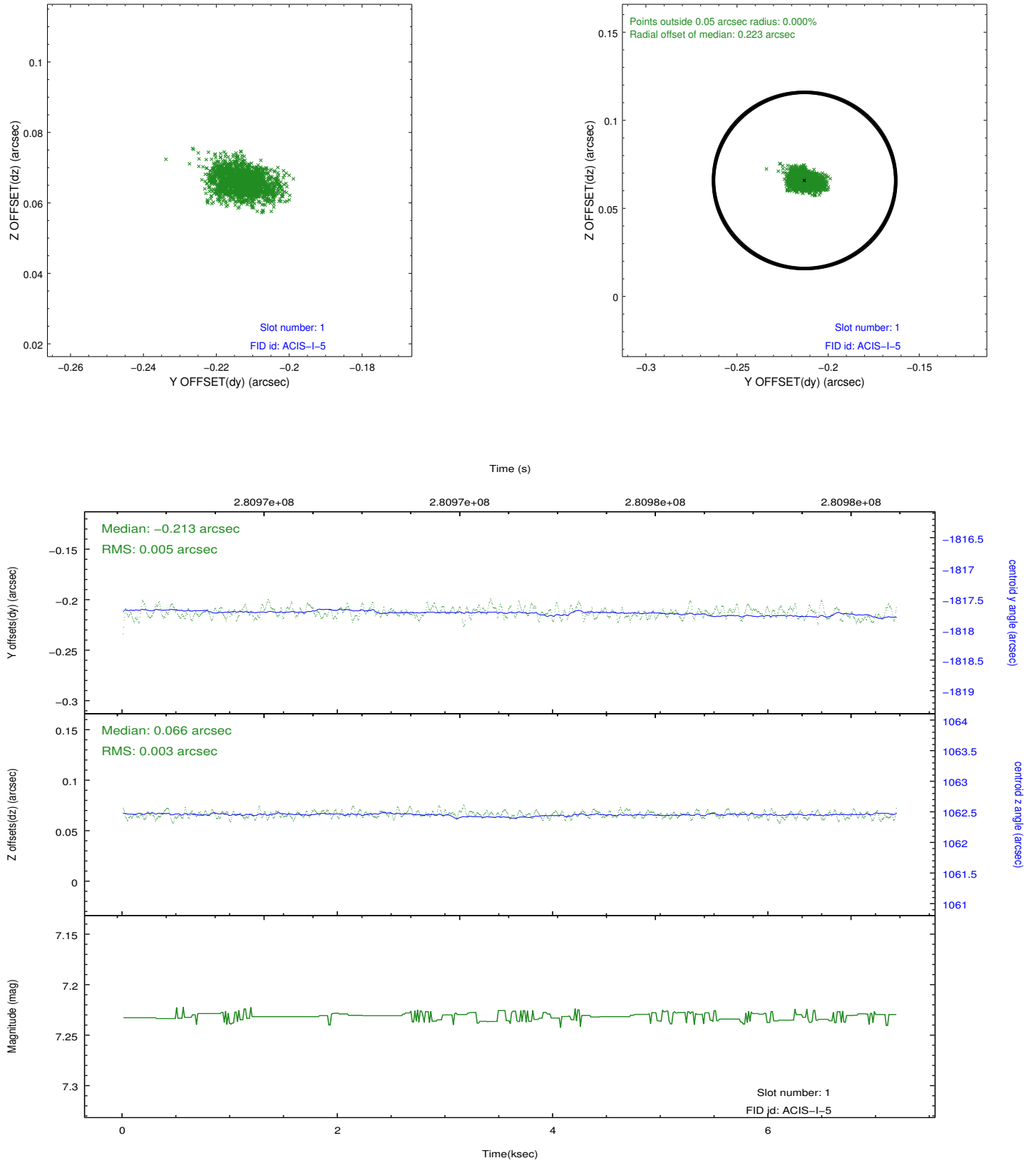


2.5 FID Slots

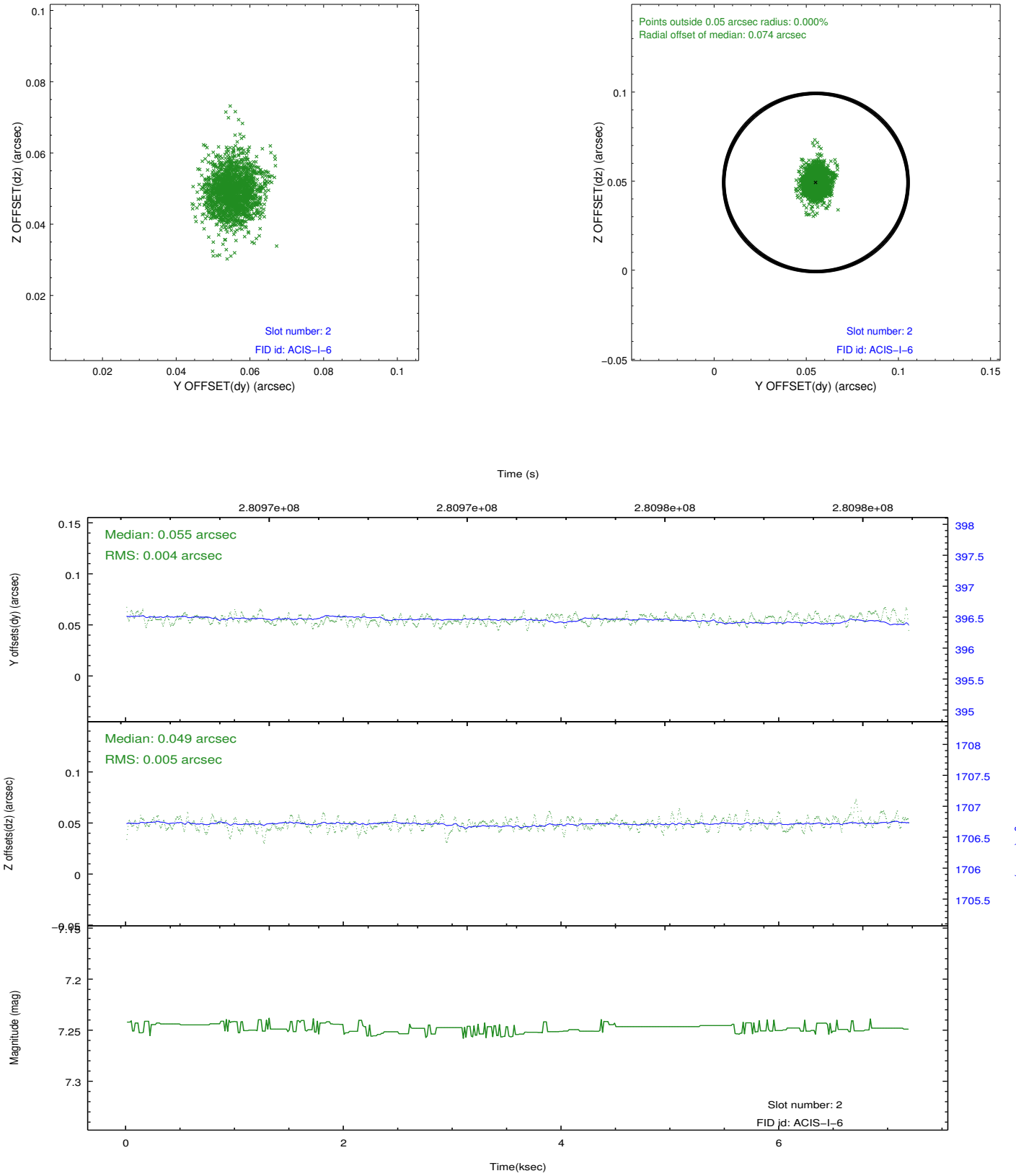
2.5.1 Slot 0



2.5.2 Slot 1



2.5.3 Slot 2



A Summary

A.1 Status

V&V Scientist	Jen Lauer
V&V Date (YYYY-MM-DD)	2012.04.17
V&V Edition	1
V&V Disposition and Status	OK
V&V Charge Time	7.17960005

A.2 Comments