

V&V Reference Report

L2 ASCDS Version : 8.4.3.1

Observation 7475 - L2 Version 2
Chandra X-Ray Center

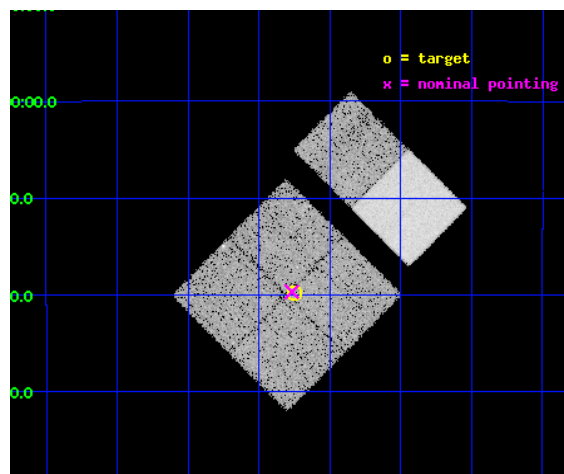
L2 Processing Date : Apr 14 2012

Contents

1	Front	2
2	OBI	3
2.1	OBI	3
2.1.1	Images	3
2.1.2	Bias	3
2.1.3	Parameters	4
2.1.4	Events	4
2.2	Compared Parameters	5
2.3	Aspect	6
2.4	Star Slots	9
2.4.1	Slot 3	9
2.4.2	Slot 4	10
2.4.3	Slot 5	11
2.4.4	Slot 6	12
2.4.5	Slot 7	13
2.5	FID Slots	14
2.5.1	Slot 0	14
2.5.2	Slot 1	15
2.5.3	Slot 2	16
A	Summary	17
A.1	Status	17
A.2	Comments	17

1 Front

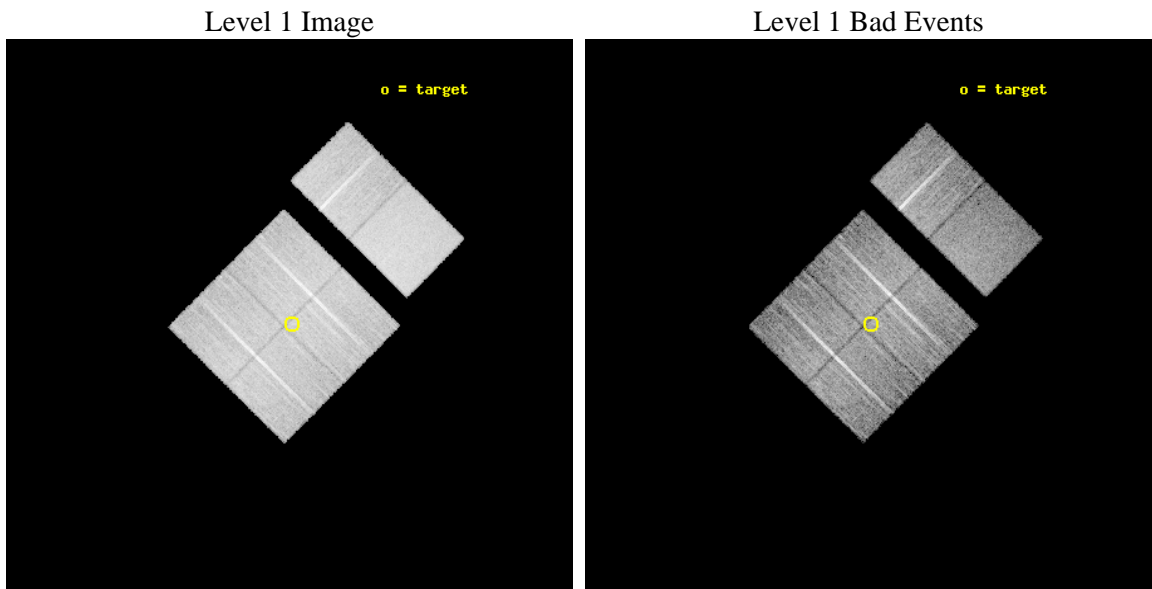
seq_num	400585	Sequence number
obs_id	7475	Observation id
title	A Pilot Study of X-ray Emission from Candidate Massive Star Clusters	
observer	Professor Gordon Garmire	Principal investigator
object	BDSB2003+93	Source name
dtcycle	0	
cycle	P	events from which exps? Prim/Second/Both
ra_targ	104.3125	Observer's specified target RA [deg]
dec_targ	-8.33	Observer's specified target Dec [deg]
ra_nom	104.31686701361	Nominal RA [deg]
dec_nom	-8.3282450571028	Nominal Dec [deg]
roll_nom	44.737179449079	Nominal Roll [deg]
revision	2	Processing version of data
ontime	10179.199962139	Sum of GTIs [s]
livetime	10050.30480304	Livetime [s]
ontime0	10179.199962139	Sum of GTIs [s]
ontime1	10179.199962139	Sum of GTIs [s]
ontime2	10179.199962139	Sum of GTIs [s]
ontime3	10179.199962139	Sum of GTIs [s]
ontime6	10179.199962139	Sum of GTIs [s]
ontime7	10179.199962139	Sum of GTIs [s]
l2events	114620	Number of level 2 events



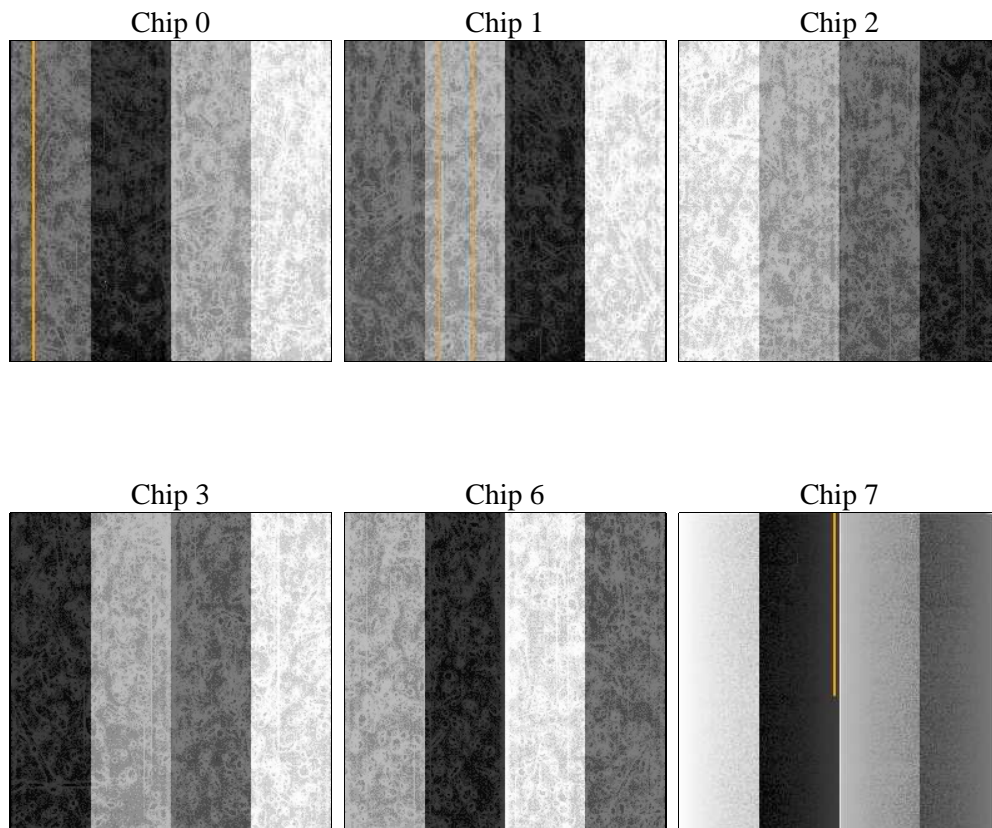
2 OBI

2.1 OBI

2.1.1 Images



2.1.2 Bias



2.1.3 Parameters

obi_num	0	Obi number	sched_exp_time	10000.000000	[s] Scheduled observation exposure time
ascdsver	8.4.3.1	Processing system revision	ontime	10179.199962139	Sum of GTIs [s]
caldsver	4.4.9	 	ontime0	10179.199962139	Sum of GTIs [s]
date	2012-04-14T17:35:09	Date and time of file creation	ontime1	10179.199962139	Sum of GTIs [s]
revision	2	Processing version of data	ontime2	10179.199962139	Sum of GTIs [s]
			ontime3	10179.199962139	Sum of GTIs [s]
			ontime6	10179.199962139	Sum of GTIs [s]
			ontime7	10179.199962139	Sum of GTIs [s]
			l1events	703194	Number of level 1 events

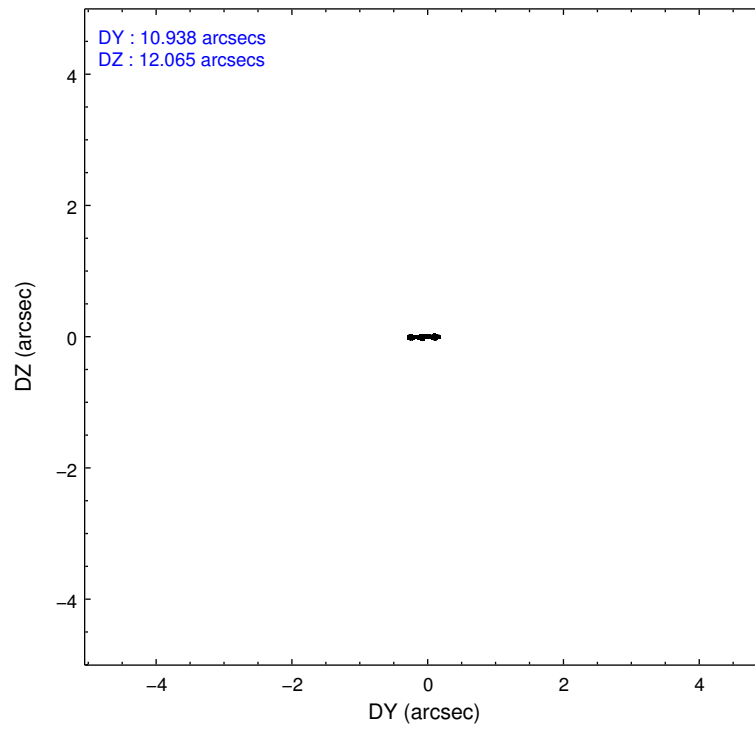
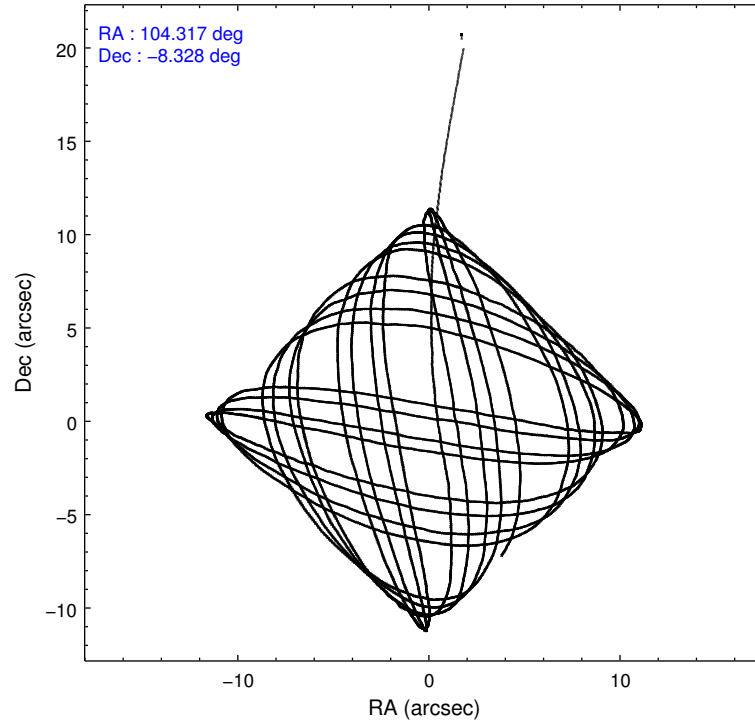
2.1.4 Events

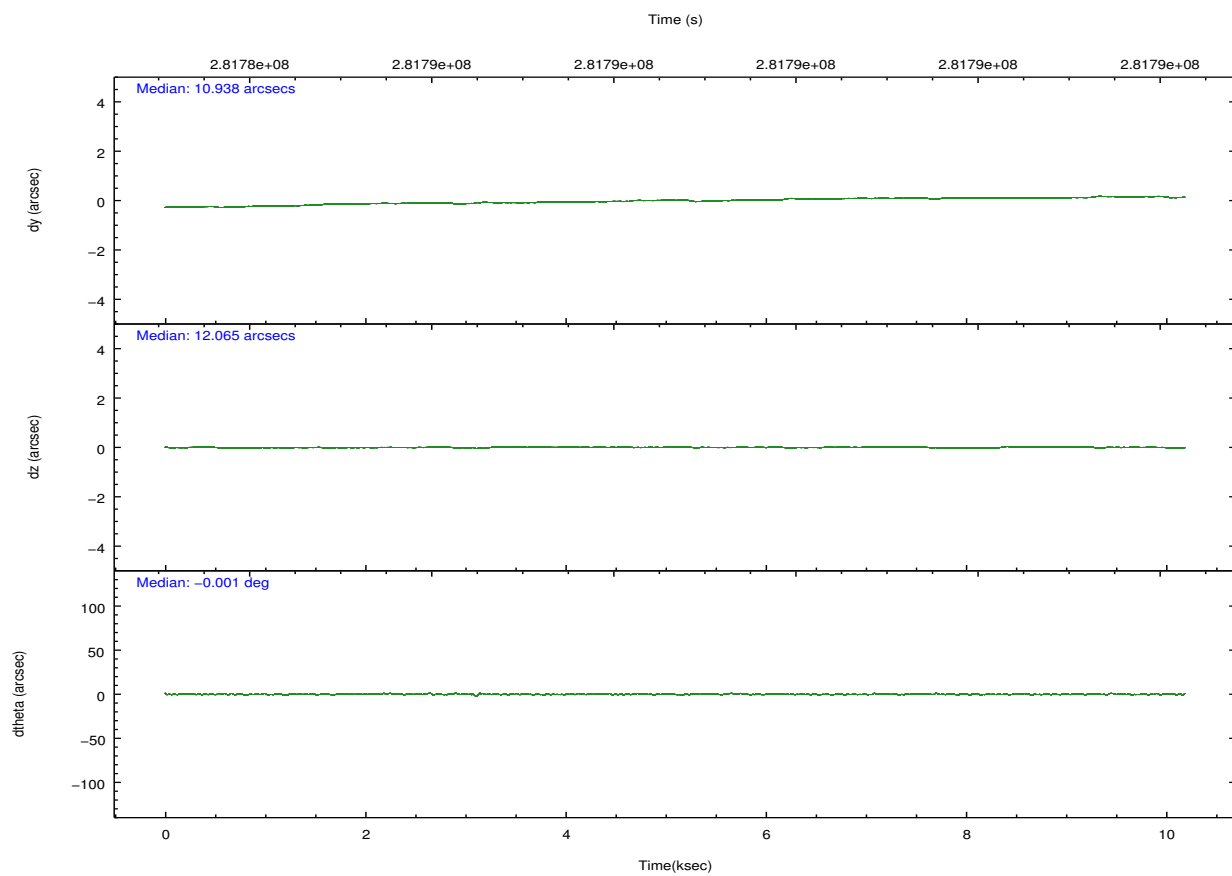
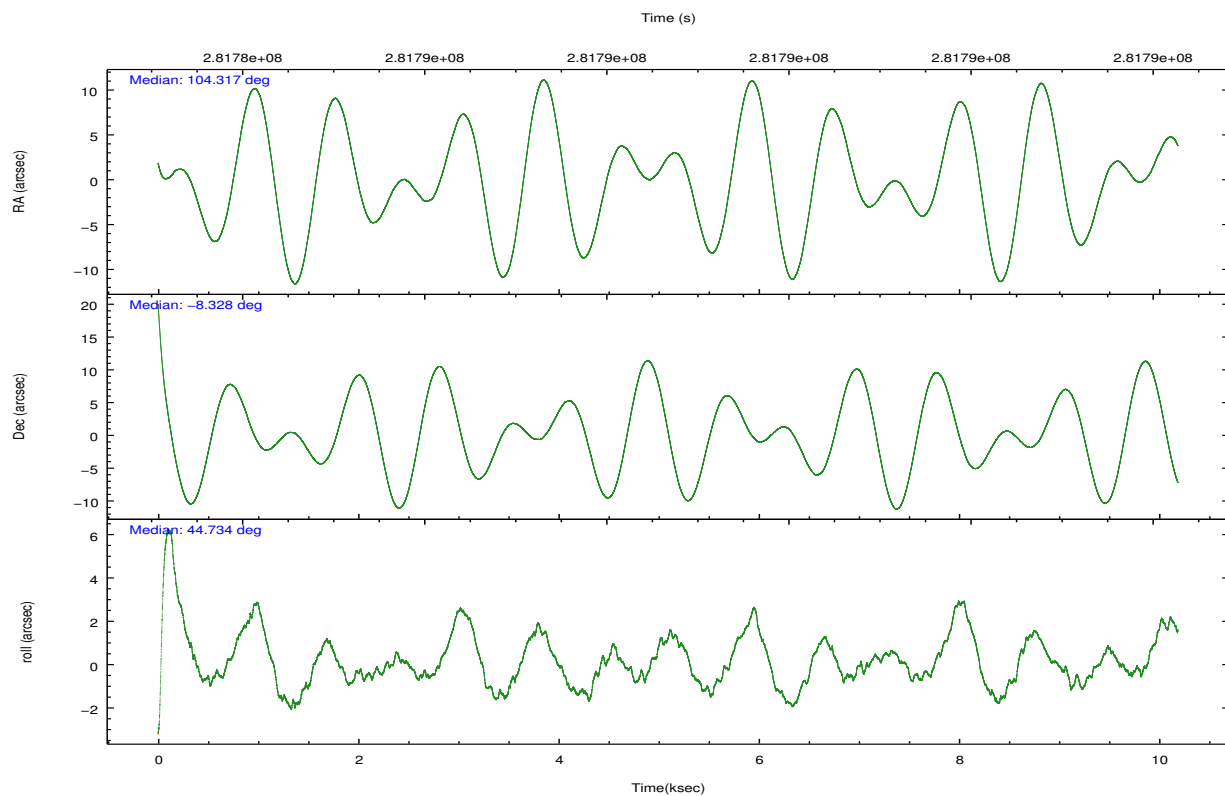
	ccd 0	ccd 1	ccd 2	ccd 3	ccd 6	ccd 7		ccd 0	ccd 1	ccd 2	ccd 3	ccd 6	ccd 7
level 1 events	104763	107043	113860	114012	116782	146734	grade 0 events	6777	6386	7112	6696	5948	5450
rejected events	91204	92924	100228	100783	103641	89224		6%	5%	6%	5%	5%	3%
rejected %	87%	86%	88%	88%	88%	60%	grade 1 events	67	75	91	78	61	159
								0%	0%	0%	0%	0%	0%
							grade 2 events	3149	3402	2903	2841	3131	12948
								3%	3%	2%	2%	2%	8%
							grade 3 events	1369	1398	1300	1363	1329	5429
								1%	1%	1%	1%	1%	3%
							grade 4 events	1270	1416	1301	1281	1239	5306
								1%	1%	1%	1%	1%	3%
							grade 5 events	4162	4489	3988	4454	4991	13436
								3%	4%	3%	3%	4%	9%
							grade 6 events	2396	2958	2435	2511	2899	33918
								2%	2%	2%	2%	2%	23%
							grade 7 events	85573	86919	94730	94788	97184	70088
								81%	81%	83%	83%	83%	47%

2.2 Compared Parameters

Parameter	Planned	Actual	Parameter	Planned	Actual
Instrument	ACIS	ACIS	Obspar format version number	7	7
Detector	ACIS-012367	ACIS-012367	Obspar file type	PREDICTED	ACTUAL
Grating	NONE	NONE	Obspar update status	NONE	UPDATED
Data mode	FAINT	FAINT	CCD I0 on	Y	Y
Observation mode	POINTING	POINTING	CCD I1 on	Y	Y
[deg] Pointing RA	104.309672	104.3168670136131	CCD I2 on	Y	Y
[deg] Pointing Dec	-8.354722	-8.328245057102778	CCD I3 on	Y	Y
[deg] Pointing Roll	44.527460	44.73717944907853	CCD S0 on	N	N
[mm] SIM focus pos	-0.782348	-0.7809083437167272	CCD S1 on	N	N
[mm] SIM defocus	0	0.001439871863259334	CCD S2 on	O2	Y
[mm] SIM translation stage pos	-233.592463	-233.5874344608287	CCD S3 on	O1	Y
[mm] SIM translation stage offset	0	-0.005018542100998502	CCD S4 on	N	N
[s] Observation start time (MET)	281783766.184000	281782210.42528	CCD S5 on	N	N
Observation start date	2006-12-06T09:15:01	2006-12-06T08:50:10	Number of optional ACIS chips dropped	0	0
[s] Observation end time (MET)	281793766.184000	281794297.22585	On-chip summing requested	N	N
Observation end date	2006-12-06T12:01:41	2006-12-06T12:11:37	Subarray requested	NONE	NONE
Read mode	TIMED	TIMED	Alternating exposures requested	N	N
			[s] Primary exposure time	0.000000	3.2

2.3 Aspect



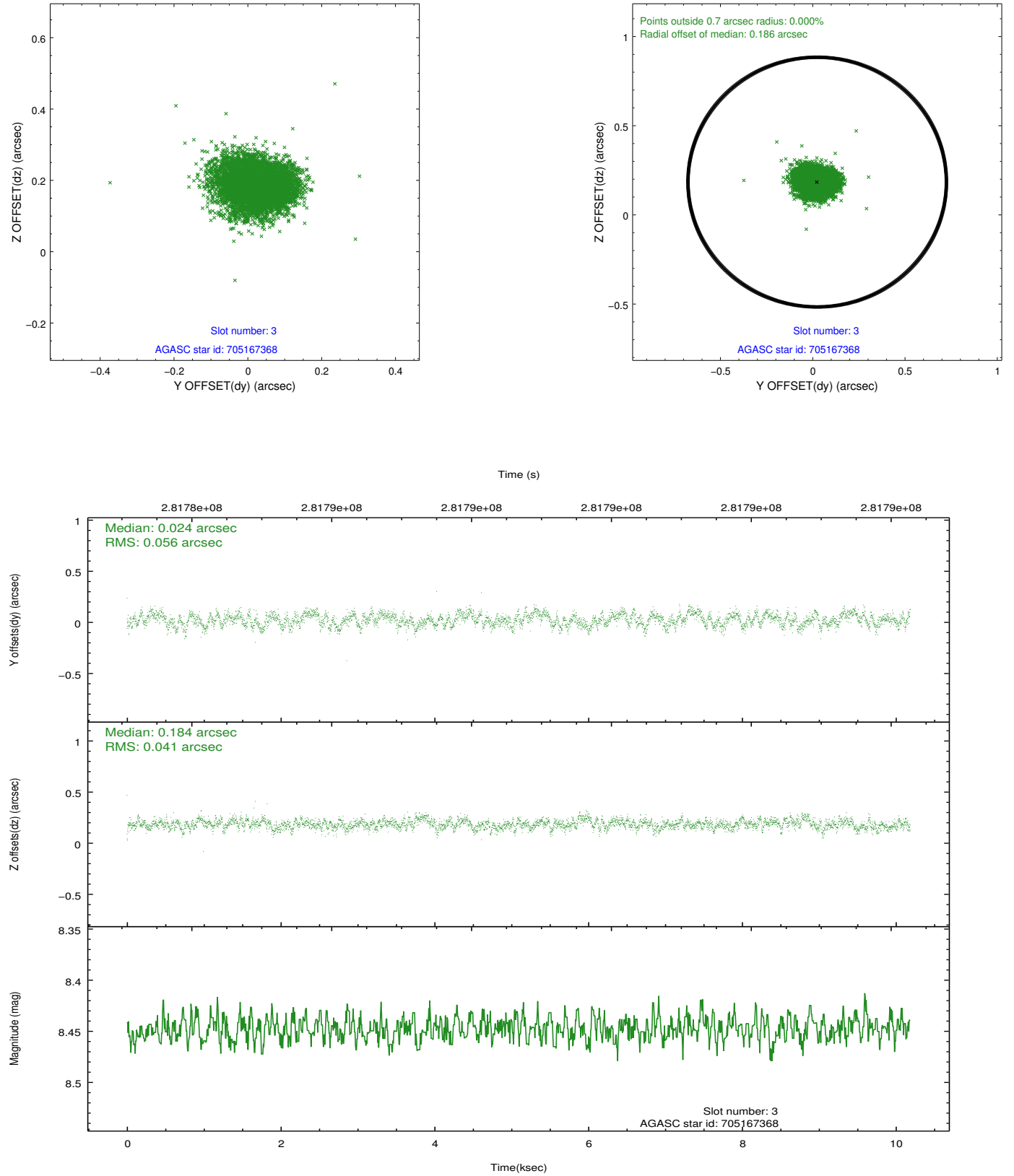


Slot Statistics

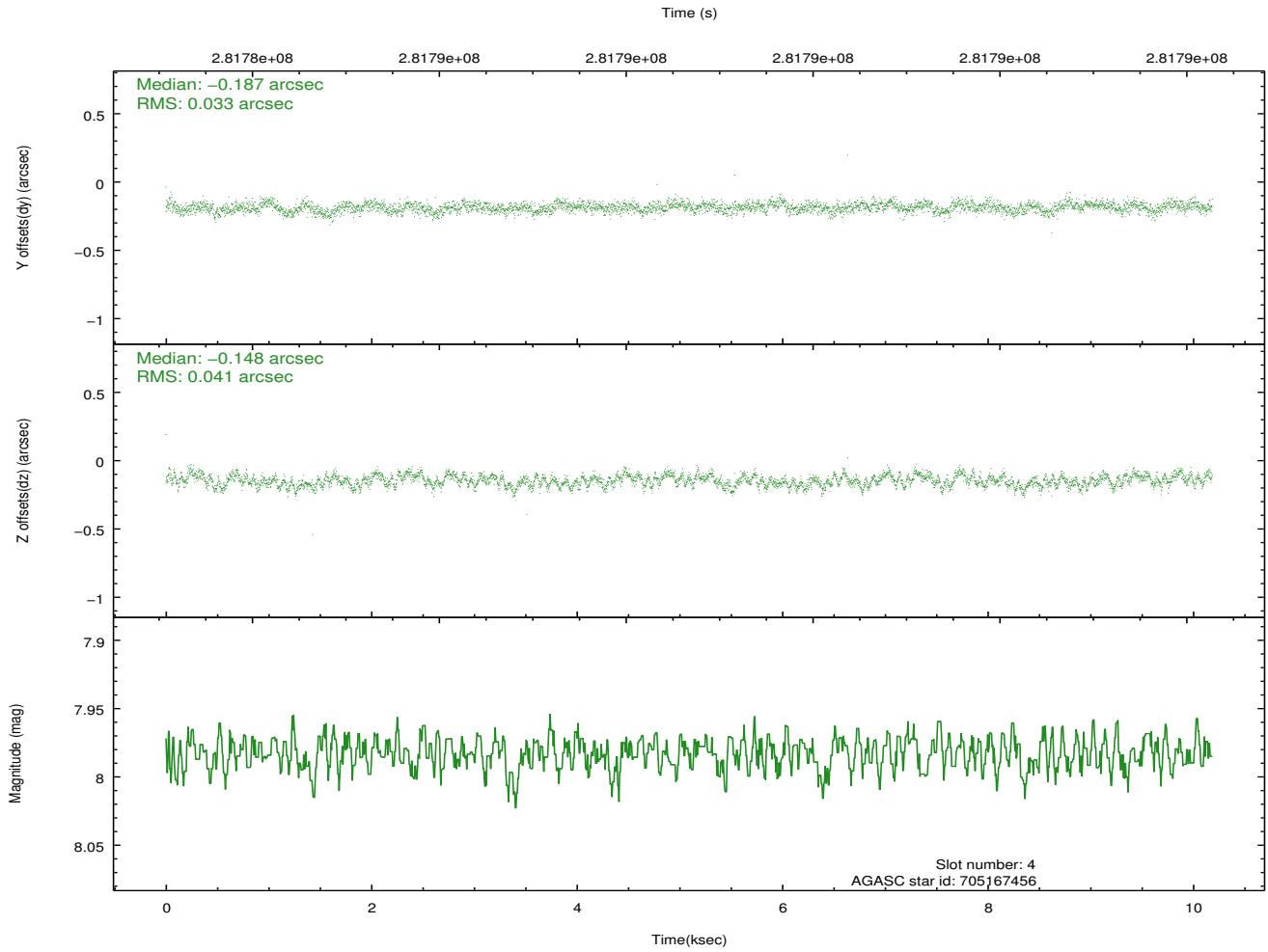
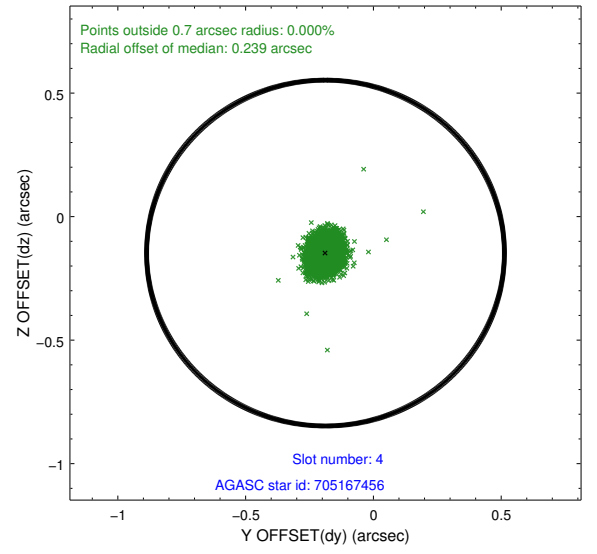
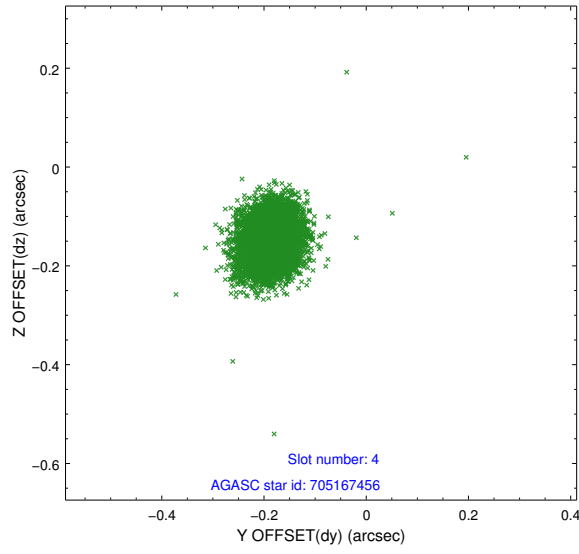
slot	status	id	mag	n_pts	med_dy	med_dz	dr1	dr2	ra	dec	mean_y	mean_z
0	FID	ACIS-I-1	7.24	2485	0.066	-0.036	0.006	0.010	0.000000	0.000000	928.70	-835.64
1	FID	ACIS-I-5	7.23	2485	-0.217	0.066	0.006	0.010	0.000000	0.000000	-1819.36	1061.75
2	FID	ACIS-I-6	7.25	2484	0.060	0.041	0.007	0.011	0.000000	0.000000	393.73	1706.77
3	GUIDE	705167368	8.45	4967	0.024	0.184	0.075	0.118	104.894371	-8.217505	1831.20	-1109.62
4	GUIDE	705167456	7.98	4968	-0.187	-0.148	0.054	0.087	104.530891	-7.843945	1852.10	757.31
5	GUIDE	705177728	8.52	4967	0.085	-0.060	0.066	0.106	103.790371	-8.347946	-1301.85	1313.69
6	GUIDE	705179440	6.93	4969	-0.033	0.135	0.046	0.075	104.299226	-9.064493	-1818.33	-1795.29
7	GUIDE	705185120	8.27	4965	0.111	-0.111	0.060	0.095	104.028999	-8.546383	-1196.53	208.04

2.4 Star Slots

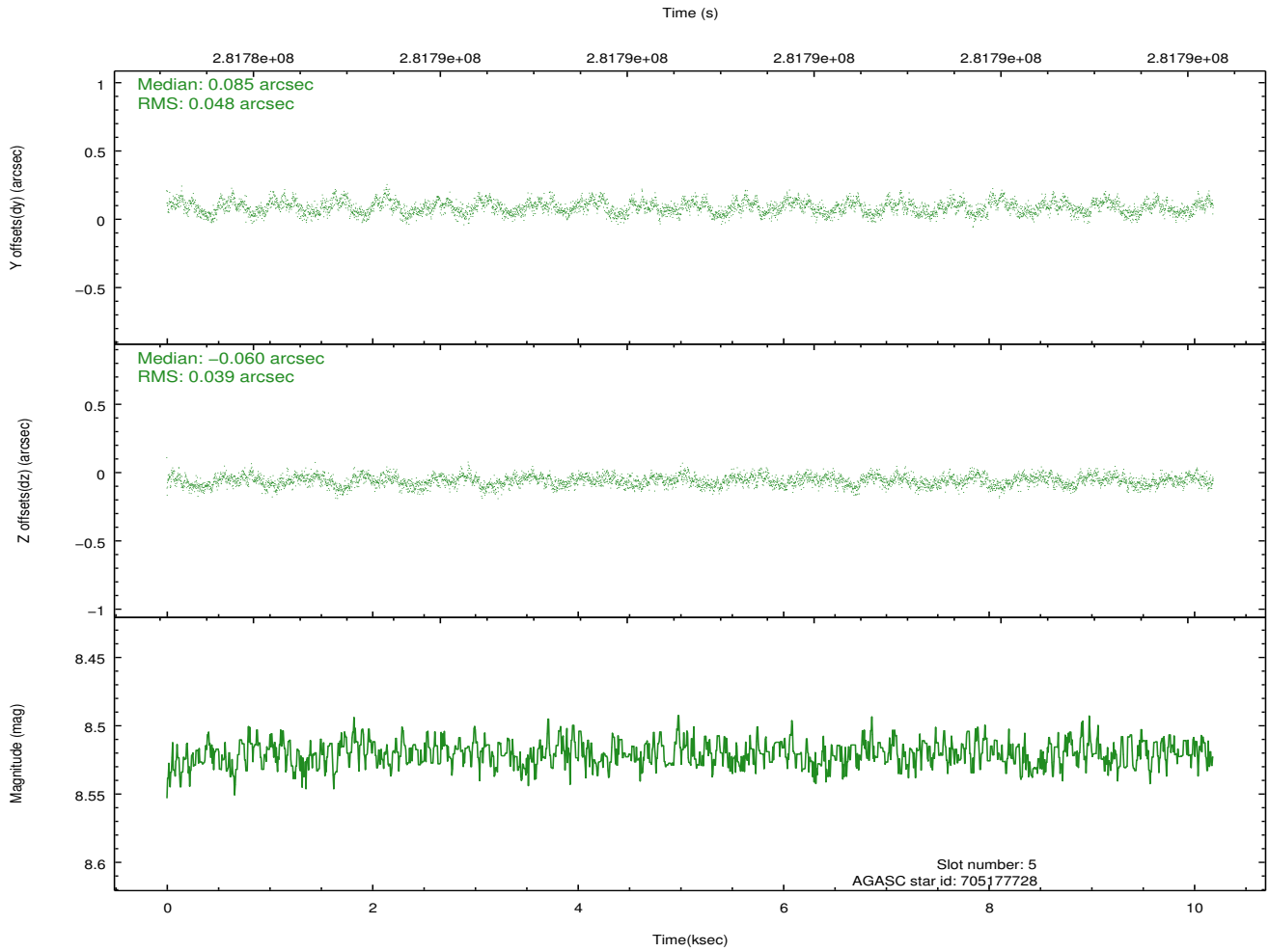
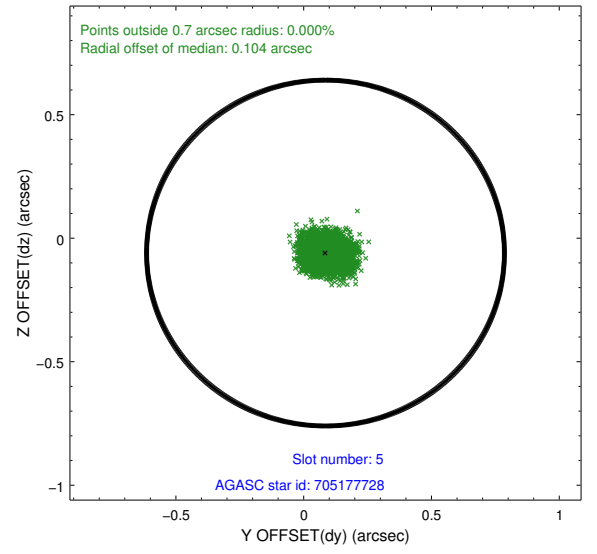
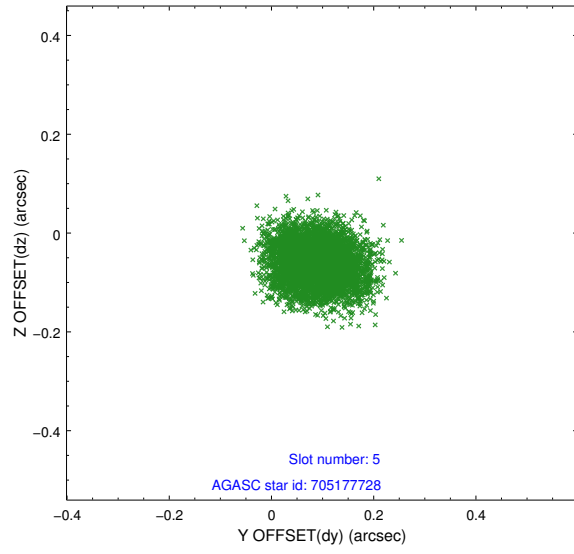
2.4.1 Slot 3



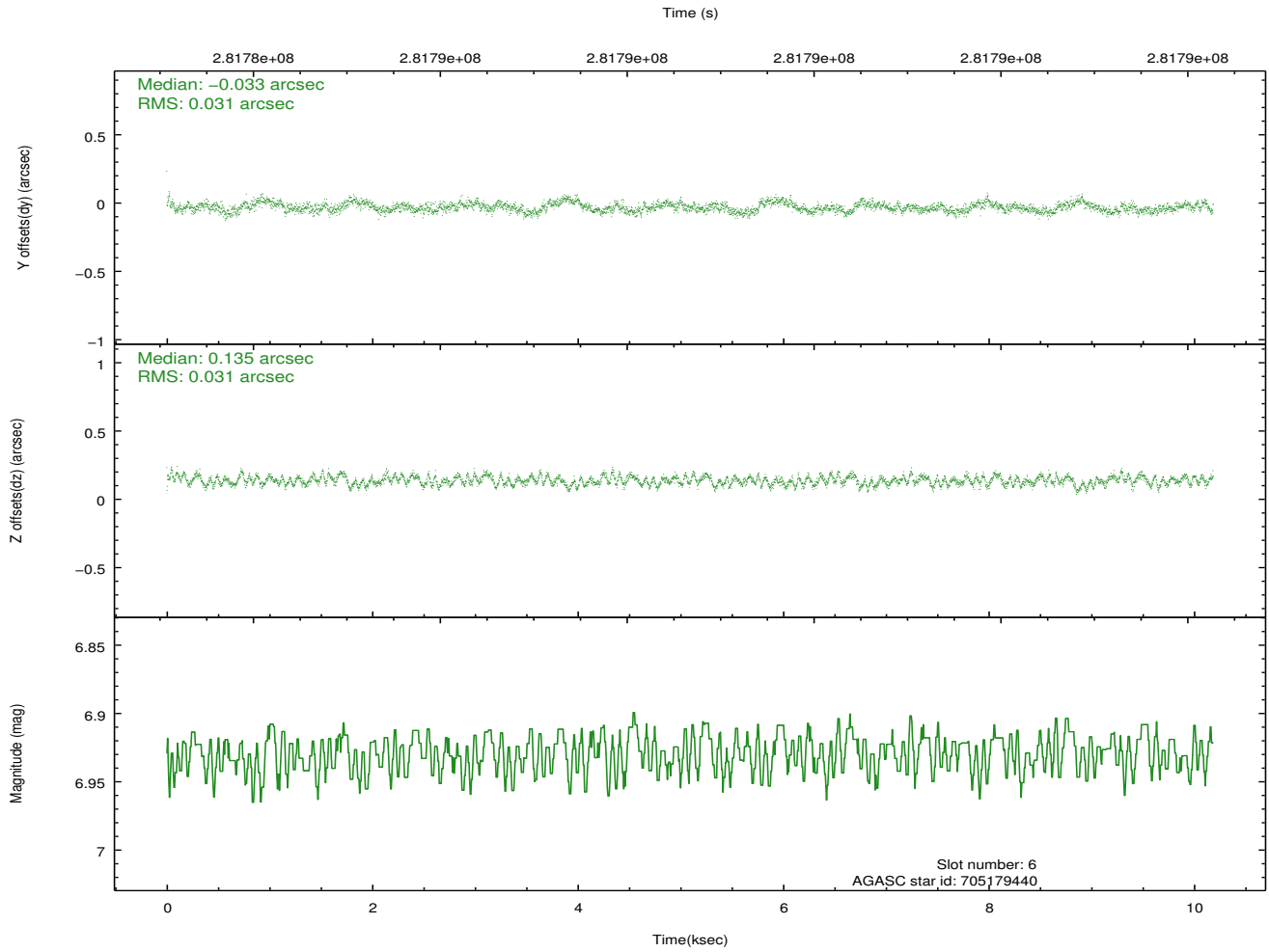
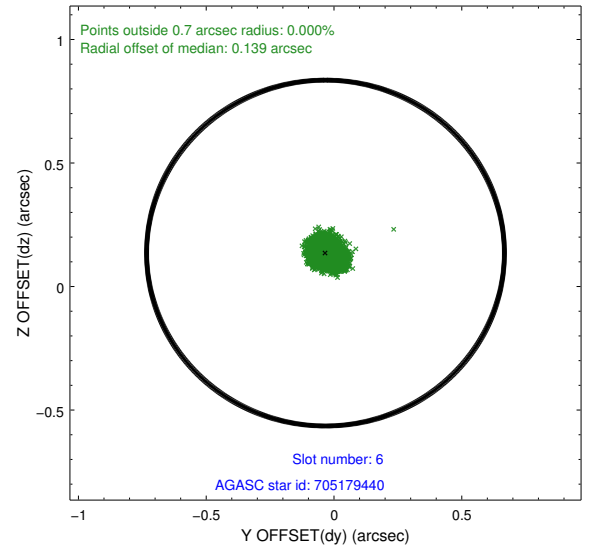
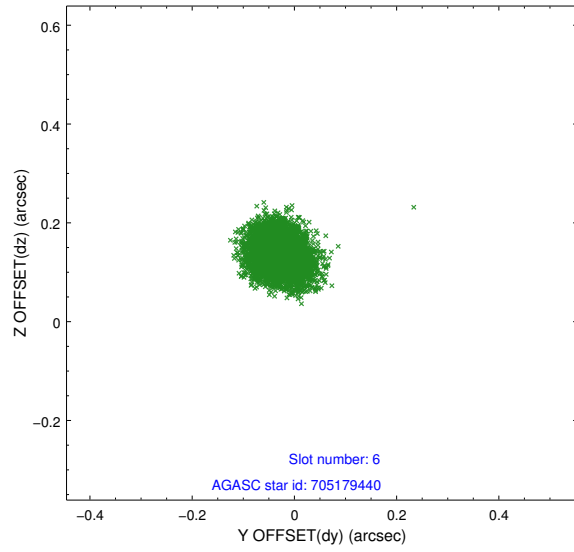
2.4.2 Slot 4



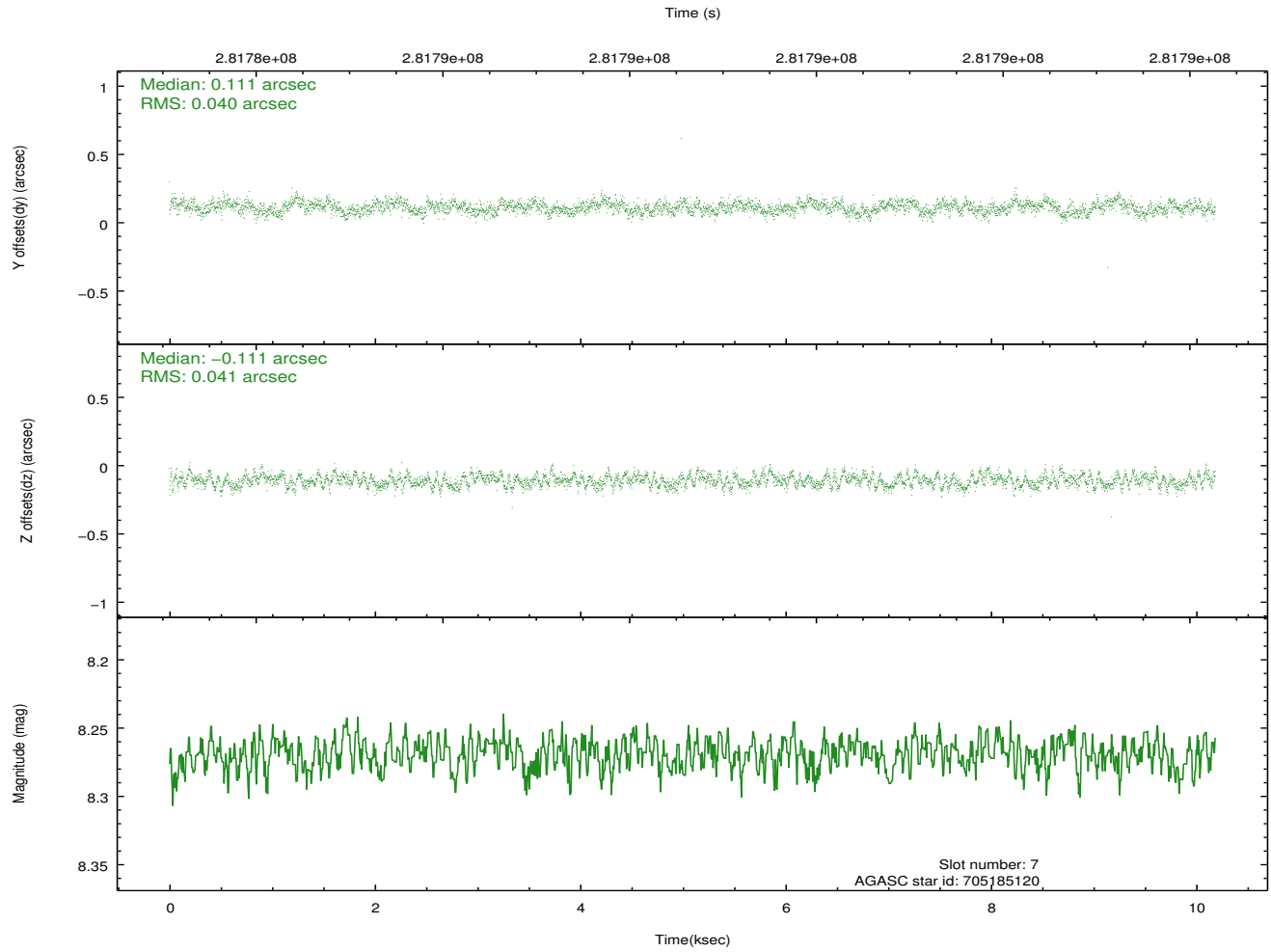
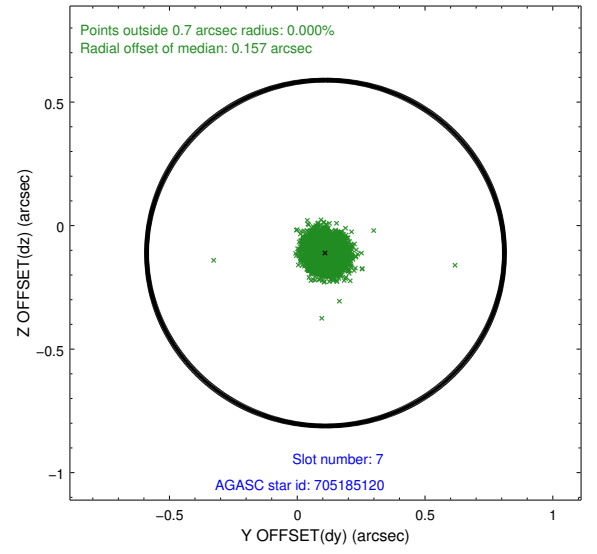
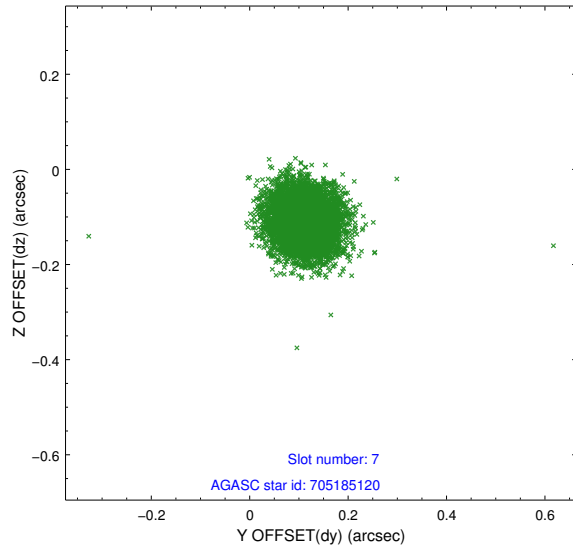
2.4.3 Slot 5



2.4.4 Slot 6

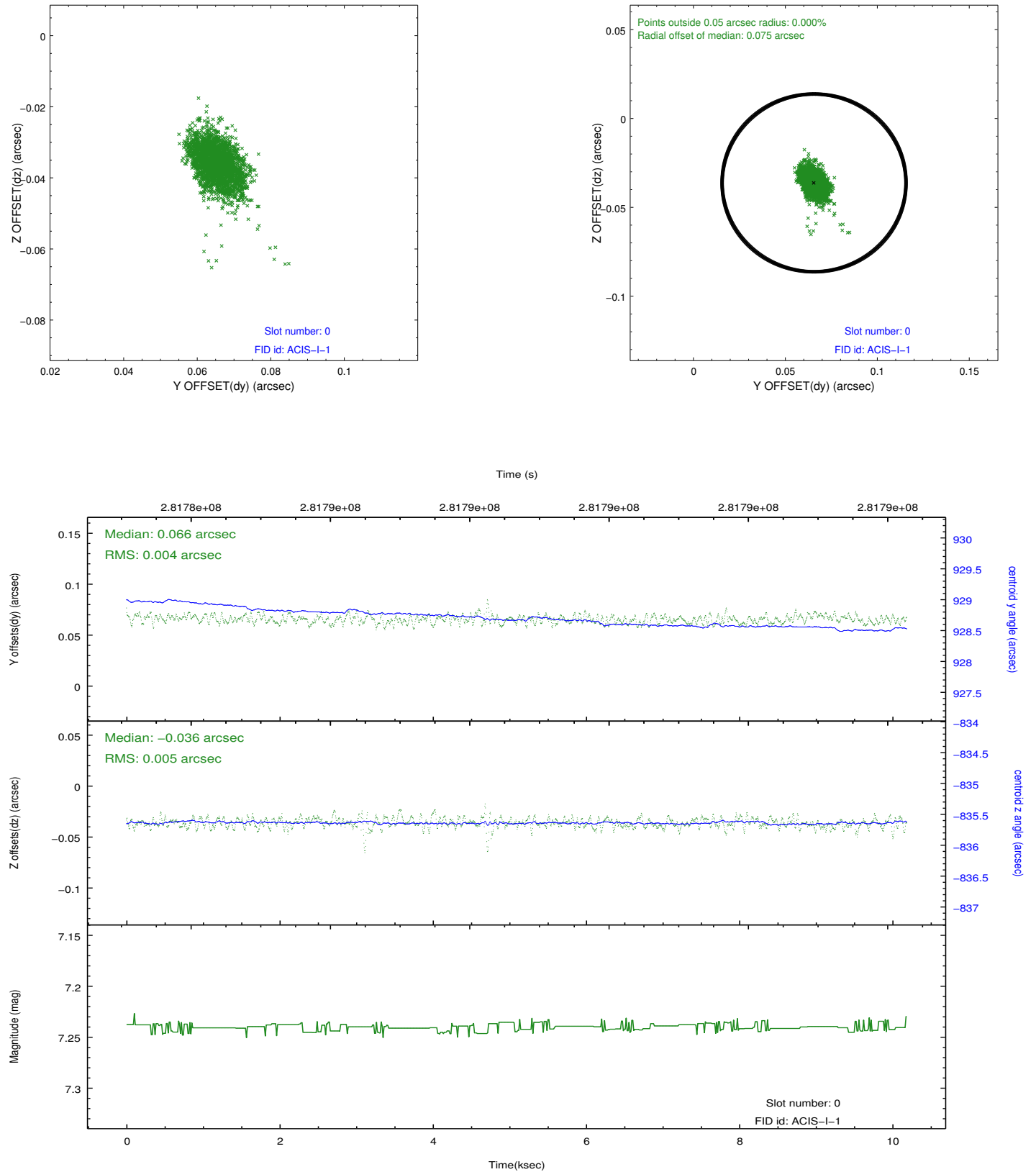


2.4.5 Slot 7

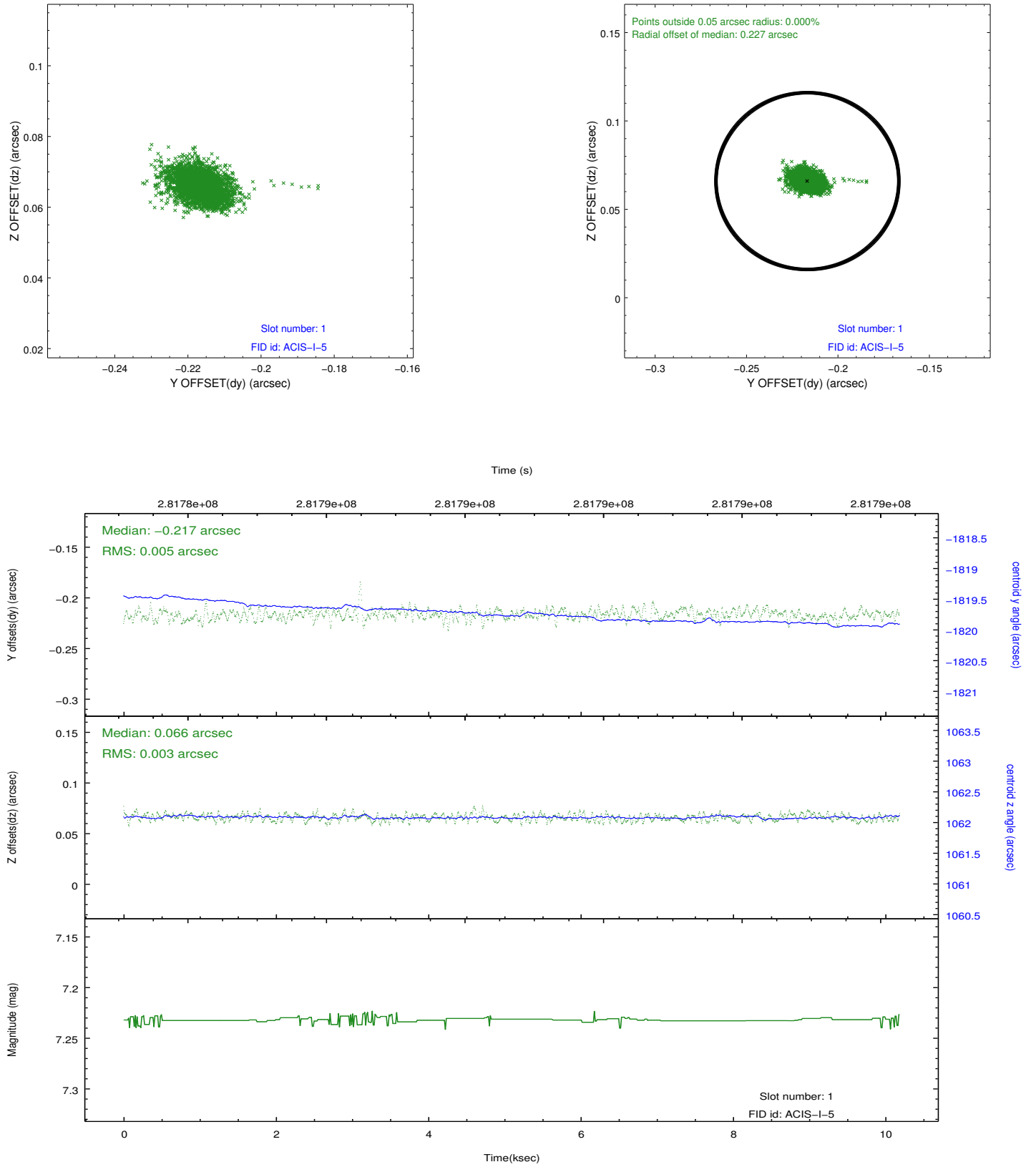


2.5 FID Slots

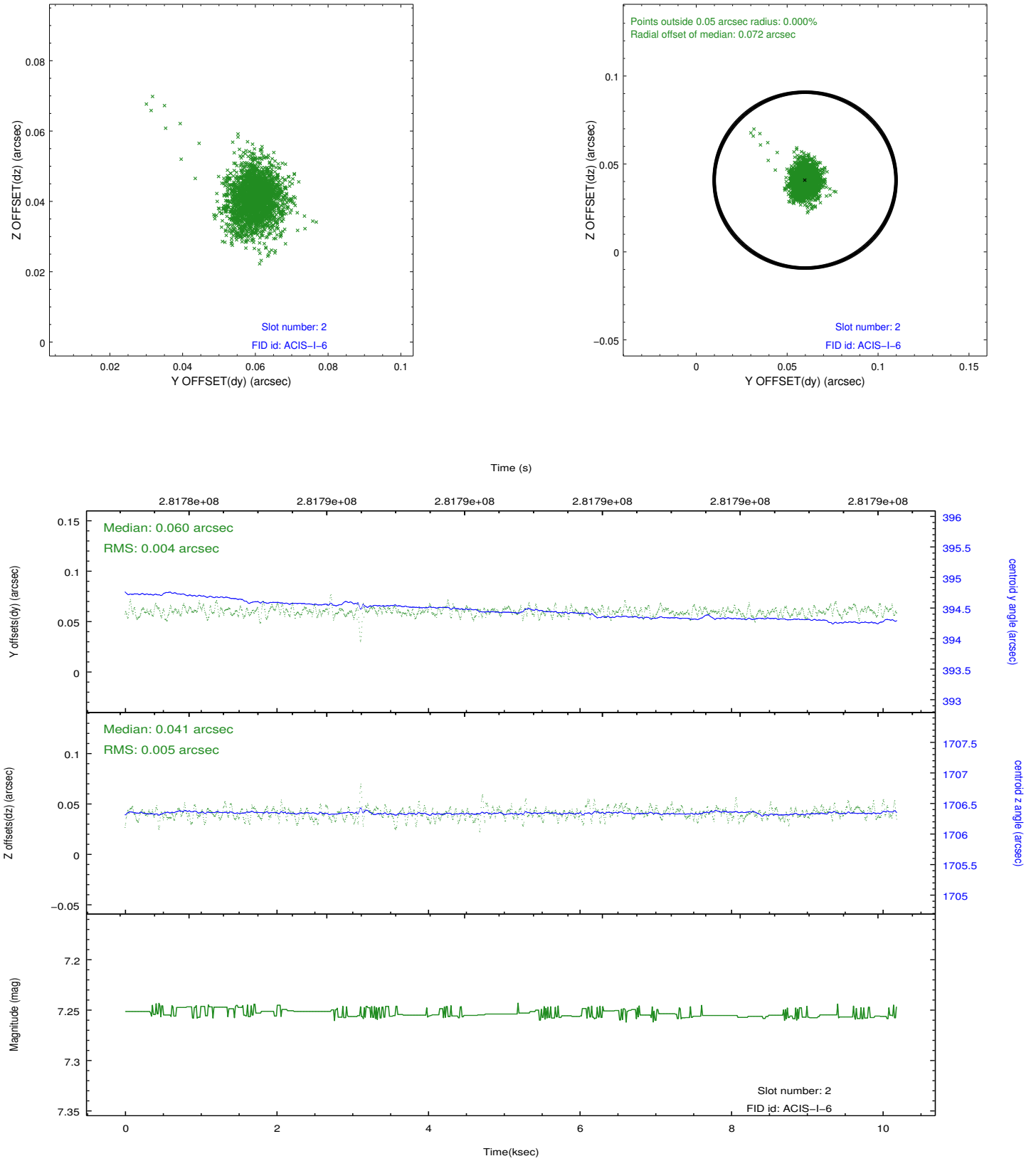
2.5.1 Slot 0



2.5.2 Slot 1



2.5.3 Slot 2



A Summary

A.1 Status

V&V Scientist	Jen Lauer
V&V Date (YYYY-MM-DD)	2012.04.18
V&V Edition	1
V&V Disposition and Status	OK
V&V Charge Time	10.1791999

A.2 Comments