

# V&V Reference Report

## L2 ASCDS Version : 8.4.3.1

Observation 6775 - L2 Version 2  
Chandra X-Ray Center

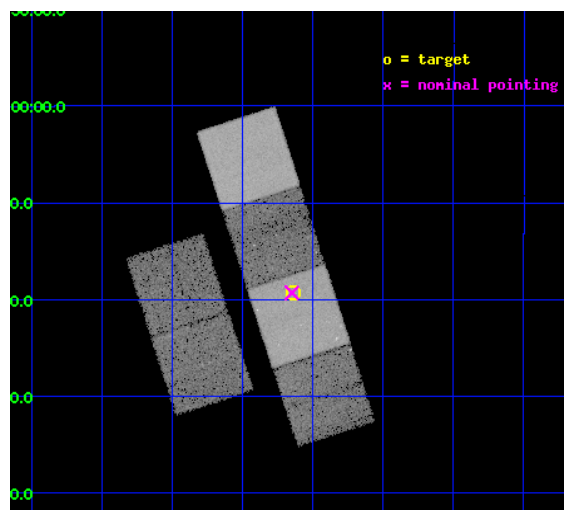
L2 Processing Date : Mar 17 2012

## Contents

<b>1</b>	<b>Front</b>	<b>2</b>
<b>2</b>	<b>OBI</b>	<b>3</b>
2.1	OBI . . . . .	3
2.1.1	Images . . . . .	3
2.1.2	Bias . . . . .	3
2.1.3	Parameters . . . . .	4
2.1.4	Events . . . . .	4
2.2	Compared Parameters . . . . .	5
2.3	Aspect . . . . .	6
2.4	Star Slots . . . . .	9
2.4.1	Slot 3 . . . . .	9
2.4.2	Slot 4 . . . . .	10
2.4.3	Slot 5 . . . . .	11
2.4.4	Slot 6 . . . . .	12
2.4.5	Slot 7 . . . . .	13
2.5	FID Slots . . . . .	14
2.5.1	Slot 0 . . . . .	14
2.5.2	Slot 1 . . . . .	15
2.5.3	Slot 2 . . . . .	16
<b>A</b>	<b>Summary</b>	<b>17</b>
A.1	Status . . . . .	17
A.2	Comments . . . . .	17

# 1 Front

seq_num	701193	Sequence number
obs_id	6775	Observation id
title	Chandra follow-up of the tidal disruption in RXJ1242-1119	Proposal
observer	Dr. Peter Predehl	Principal investigator
object	RXJ1242-1119	Source name
dtcycle	0	&#160
cycle	P	events from which exps? Prim/Second/Both
ra_targ	190.660417	Observer's specified target RA [deg]
dec_targ	-11.3225	Observer's specified target Dec [deg]
ra_nom	190.66239996842	Nominal RA [deg]
dec_nom	-11.321844391393	Nominal Dec [deg]
roll_nom	72.040031288006	Nominal Roll [deg]
revision	2	Processing version of data
ontime	17398.399935186	Sum of GTIs [s]
livetime	17178.090919148	Livetime [s]
ontime2	17398.399935186	Sum of GTIs [s]
ontime3	17398.399935186	Sum of GTIs [s]
ontime5	17398.399935186	Sum of GTIs [s]
ontime6	17398.399935186	Sum of GTIs [s]
ontime7	17398.399935186	Sum of GTIs [s]
ontime8	17395.158964902	Sum of GTIs [s]
l2events	228263	Number of level 2 events

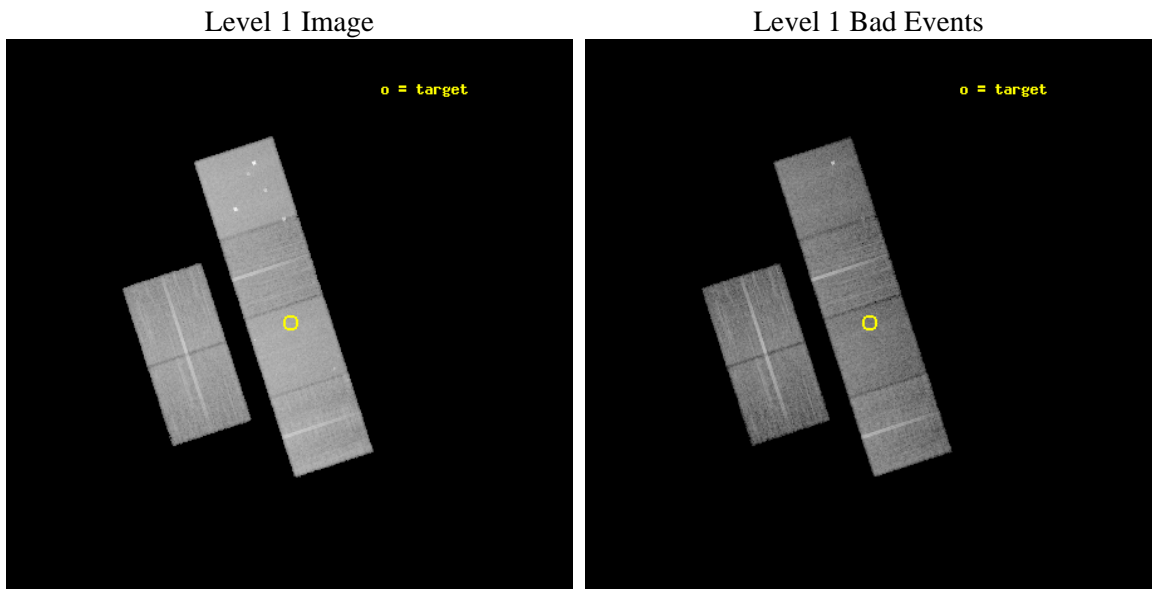




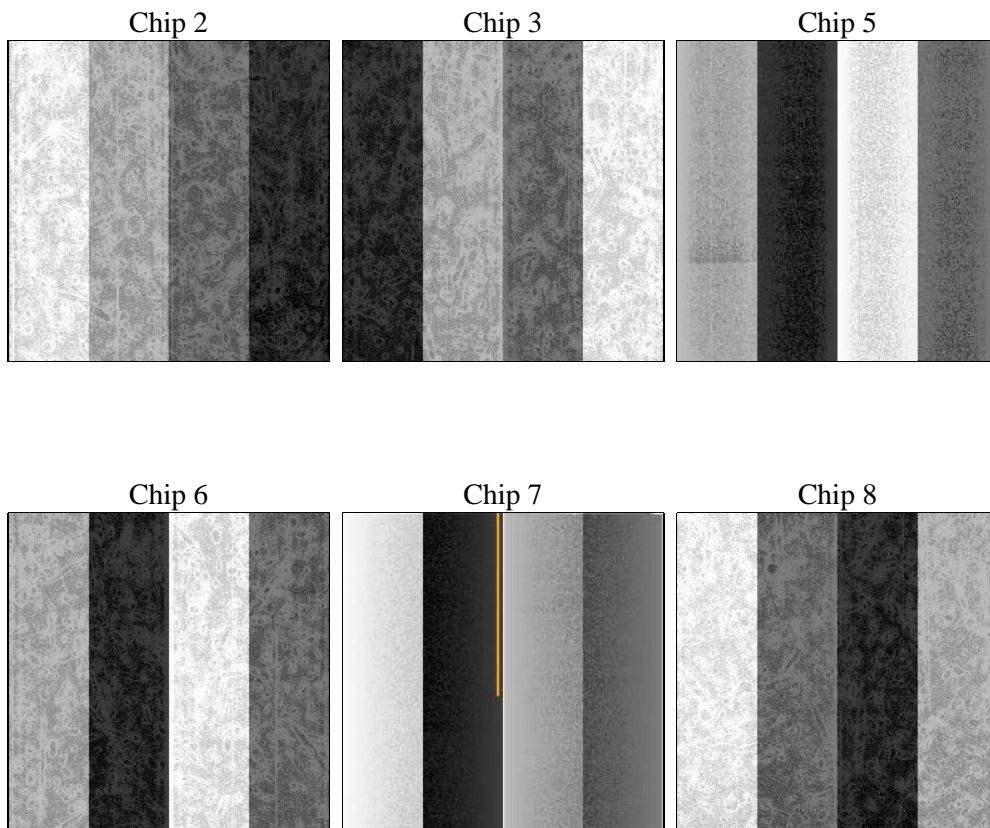
## 2 OBI

### 2.1 OBI

#### 2.1.1 Images



#### 2.1.2 Bias



### 2.1.3 Parameters

obi_num	0	Obi number	sched_exp_time	17260.030000	[s] Scheduled observation exposure time
ascdsver	8.4.3	Processing system revision	ontime	17398.399935186	Sum of GTIs [s]
caldsver	4.4.8	&#160	ontime2	17398.399935186	Sum of GTIs [s]
date	2012-03-17T16:10:21	Date and time of file creation	ontime3	17398.399935186	Sum of GTIs [s]
revision	2	Processing version of data	ontime5	17398.399935186	Sum of GTIs [s]
			ontime6	17398.399935186	Sum of GTIs [s]
			ontime7	17398.399935186	Sum of GTIs [s]
			ontime8	17395.158964902	Sum of GTIs [s]
			l1events	1030118	Number of level 1 events

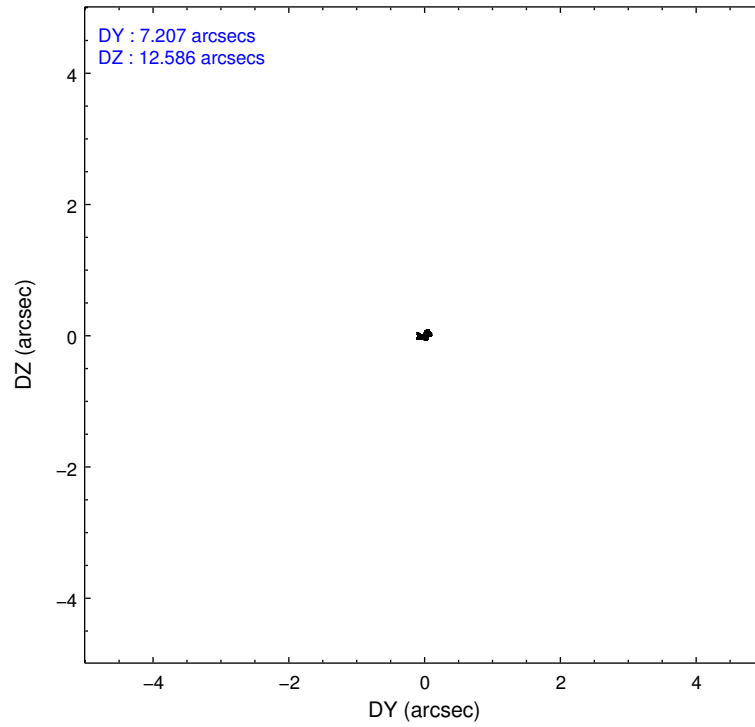
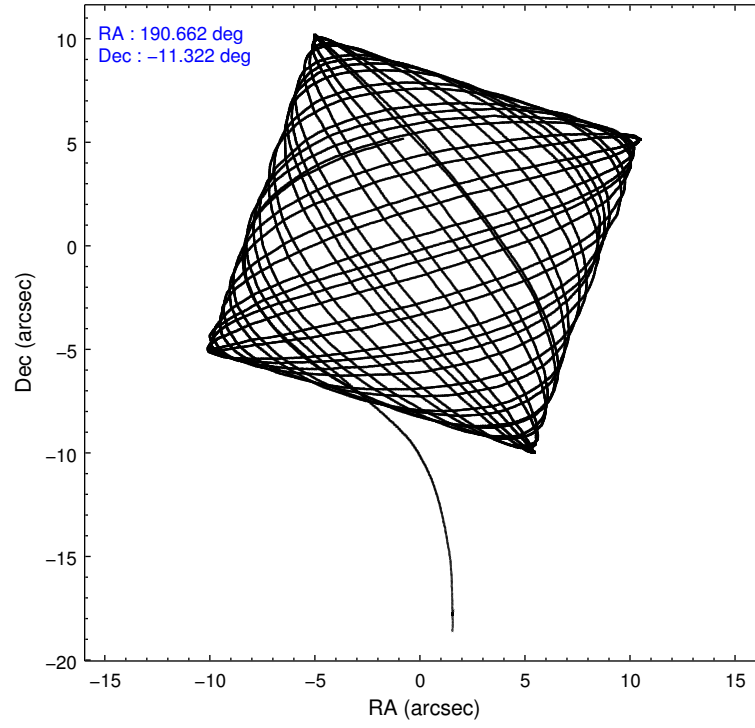
### 2.1.4 Events

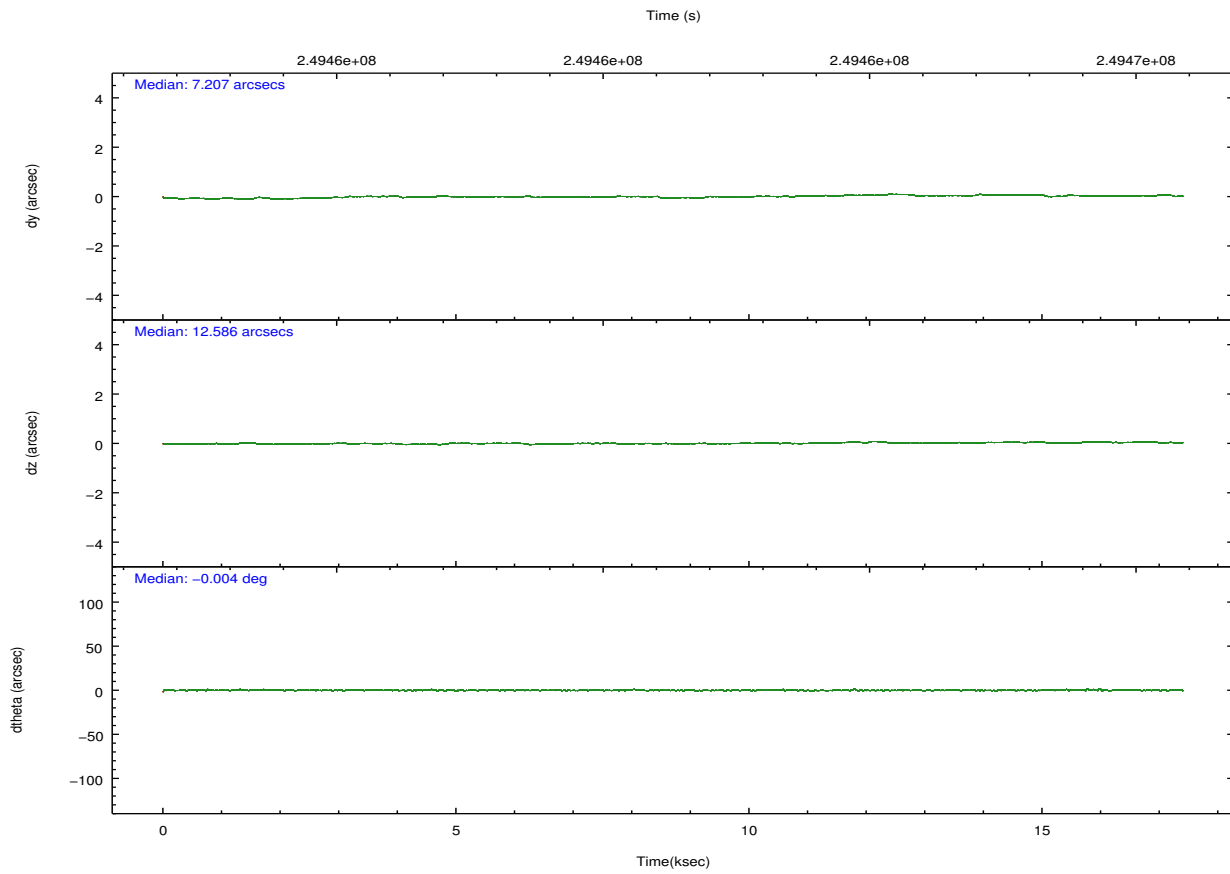
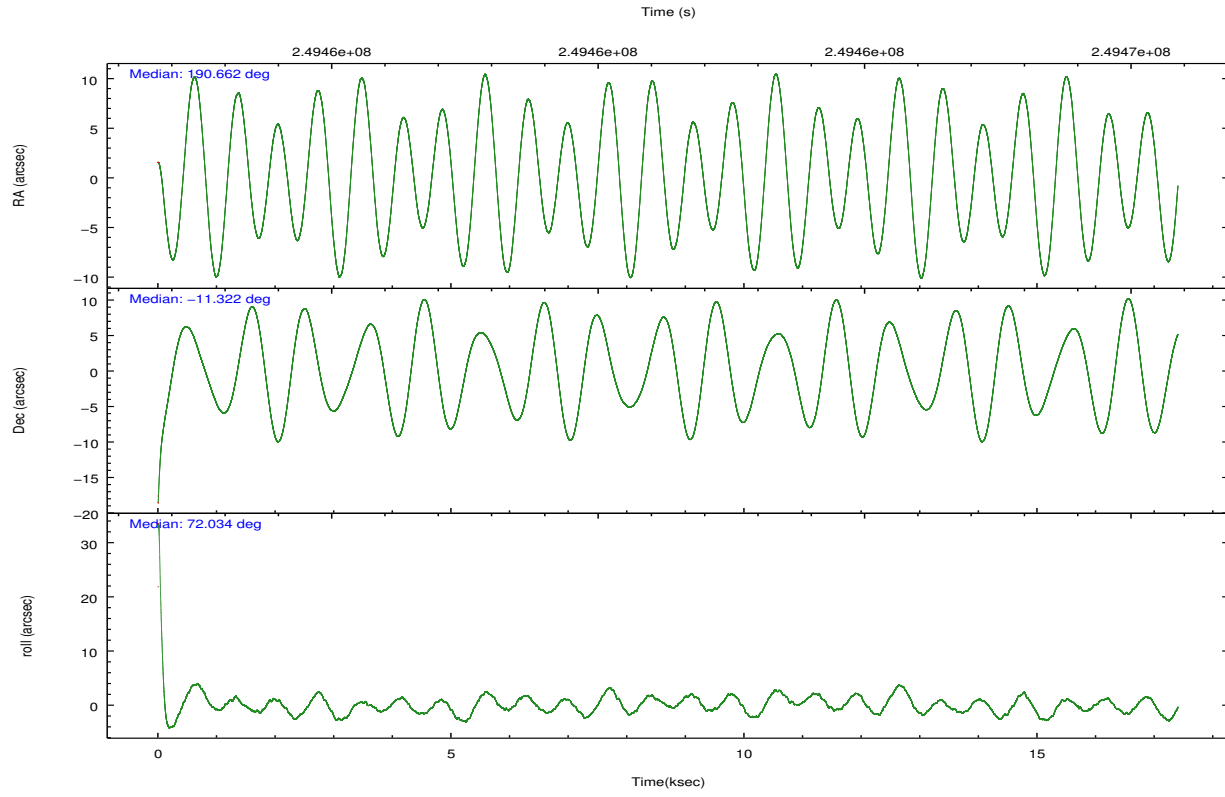
	ccd 2	ccd 3	ccd 5	ccd 6	ccd 7	ccd 8		ccd 2	ccd 3	ccd 5	ccd 6	ccd 7	ccd 8
level 1 events	148563	134188	223490	143003	197662	183212	grade 0 events	7622	7339	12536	6820	7635	13077
rejected events	131749	117922	121566	126305	117595	143100		5%	5%	5%	4%	3%	7%
rejected %	88%	87%	54%	88%	59%	78%	grade 1 events	98	81	422	73	179	145
								0%	0%	0%	0%	0%	0%
							grade 2 events	3514	3258	32024	3673	16531	9012
								2%	2%	14%	2%	8%	4%
							grade 3 events	1598	1660	3784	1608	7151	4484
								1%	1%	1%	1%	3%	2%
							grade 4 events	1572	1599	3612	1643	7150	3986
								1%	1%	1%	1%	3%	2%
							grade 5 events	5500	6362	16095	6686	18510	8888
								3%	4%	7%	4%	9%	4%
							grade 6 events	2944	2871	52710	3403	43823	10672
								1%	2%	23%	2%	22%	5%
							grade 7 events	125715	111018	102307	119097	96683	132948
								84%	82%	45%	83%	48%	72%

## 2.2 Compared Parameters

Parameter	Planned	Actual	Parameter	Planned	Actual
Instrument	ACIS	ACIS	Obspar format version number	7	7
Detector	ACIS-235678	ACIS-235678	Obspar file type	PREDICTED	ACTUAL
Grating	NONE	NONE	Obspar update status	NONE	UPDATED
Data mode	VFAINT	VFAINT	Number of optional ACIS chips dropped	0	0
Observation mode	POINTING	POINTING	On-chip summing requested	N	N
[deg] Pointing RA	190.668588	190.6623999684219	Subarray requested	NONE	NONE
[deg] Pointing Dec	-11.348385	-11.32184439139303	Alternating exposures requested	N	N
[deg] Pointing Roll	71.884602	72.04003128800564	[s] Primary exposure time	0.000000	3.2
[mm] SIM focus pos	-0.684267	-0.6828225247311905			
[mm] SIM defocus	0	0.001444936568705701			
[mm] SIM translation stage pos	-190.132523	-190.1425803651734			
[mm] SIM translation stage offset	0	0.01005778216563158			
[s] Observation start time (MET)	249452755.184000	249451466.21423			
Observation start date	2005-11-27T04:24:51	2005-11-27T04:04:26			
[s] Observation end time (MET)	249470015.184000	249470242.16509			
Observation end date	2005-11-27T09:12:31	2005-11-27T09:17:22			
Read mode	TIMED	TIMED			

## 2.3 Aspect



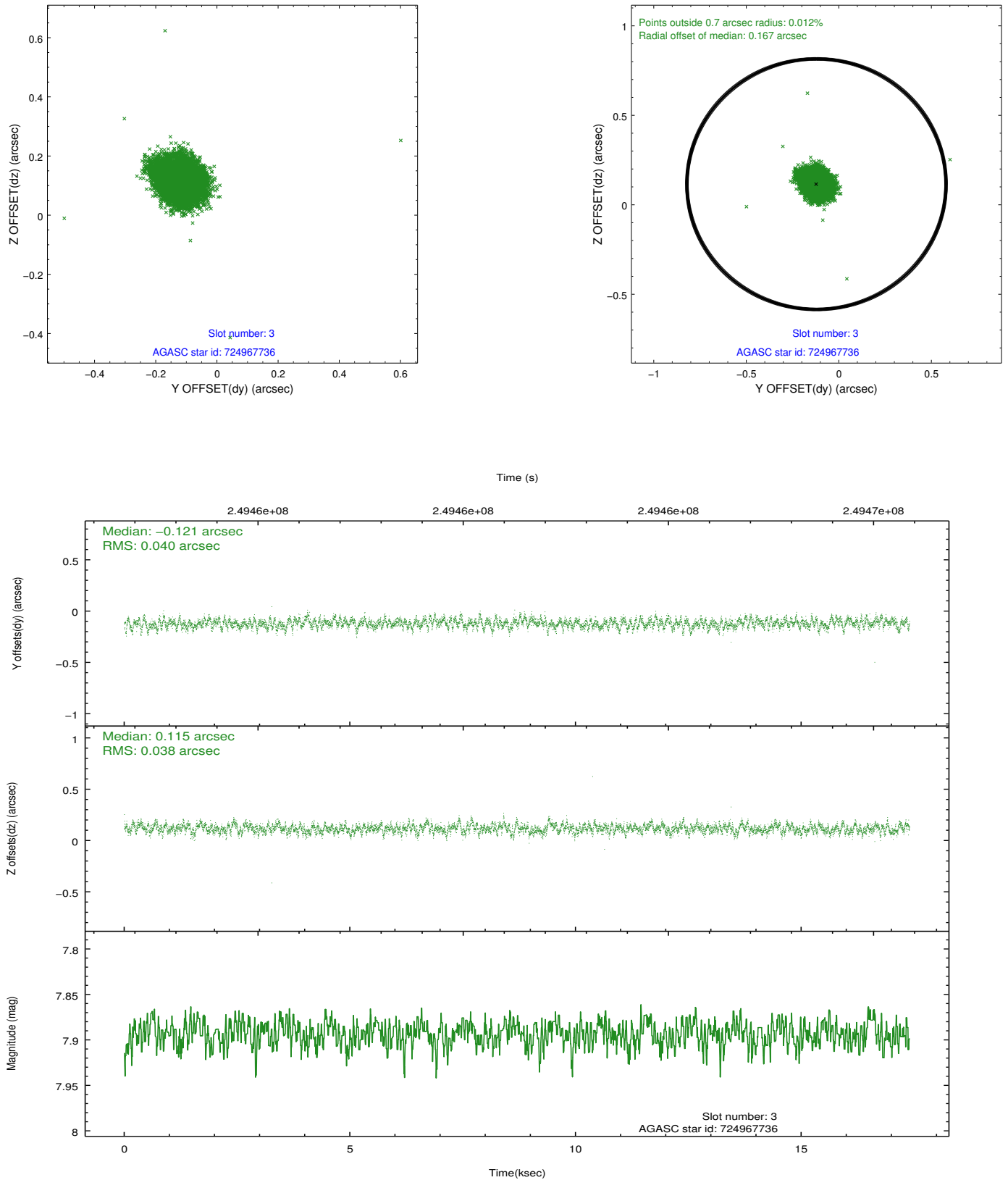


### Slot Statistics

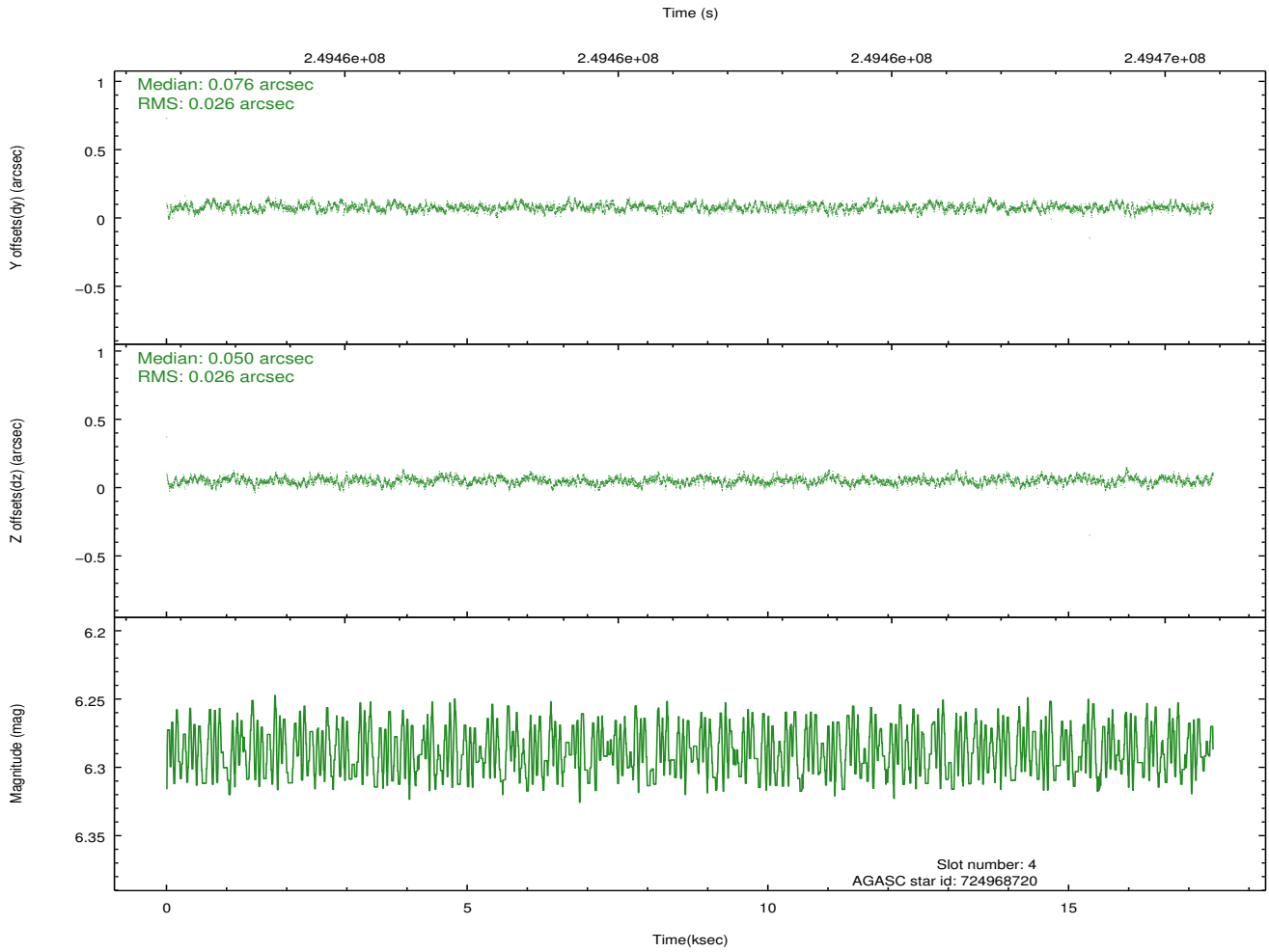
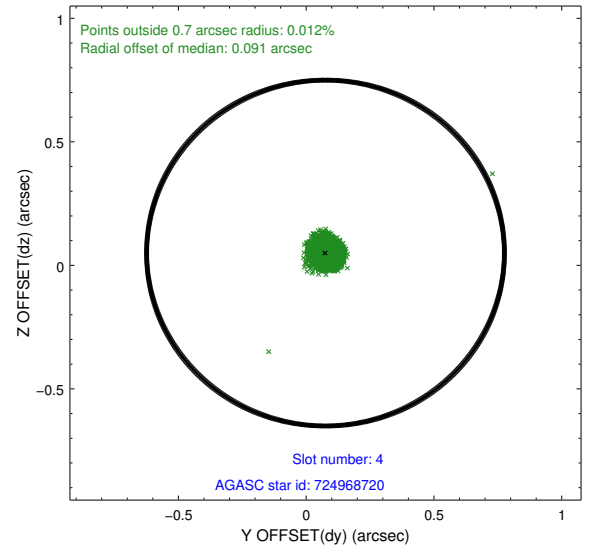
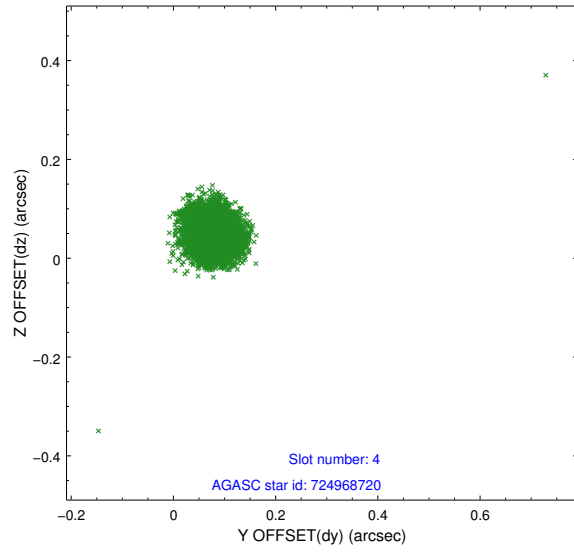
slot	status	id	mag	n_pts	med_dy	med_dz	dr1	dr2	ra	dec	mean_y	mean_z
0	FID	ACIS-S-2	7.10	4245	-0.016	-0.040	0.007	0.011	0.000000	0.000000	-759.99	-1733.89
1	FID	ACIS-S-4	7.20	4245	0.071	0.019	0.005	0.010	0.000000	0.000000	2153.28	174.38
2	FID	ACIS-S-5	7.23	4245	-0.086	0.031	0.007	0.012	0.000000	0.000000	-1812.58	168.37
3	GUIDE	724967736	7.89	8487	-0.121	0.115	0.058	0.093	191.267974	-10.999423	1850.98	-1622.79
4	GUIDE	724968720	6.29	8488	0.076	0.050	0.038	0.062	190.948727	-12.014224	-1971.22	-1683.49
5	GUIDE	724969752	8.54	8484	0.040	0.047	0.058	0.096	191.101692	-11.318790	575.86	-1420.22
6	GUIDE	724970568	9.28	8484	0.084	0.001	0.083	0.134	190.273943	-11.584336	-1240.58	1058.29
7	GUIDE	724971048	8.80	8484	-0.079	-0.212	0.067	0.108	190.547082	-11.185183	424.74	590.64

## 2.4 Star Slots

### 2.4.1 Slot 3

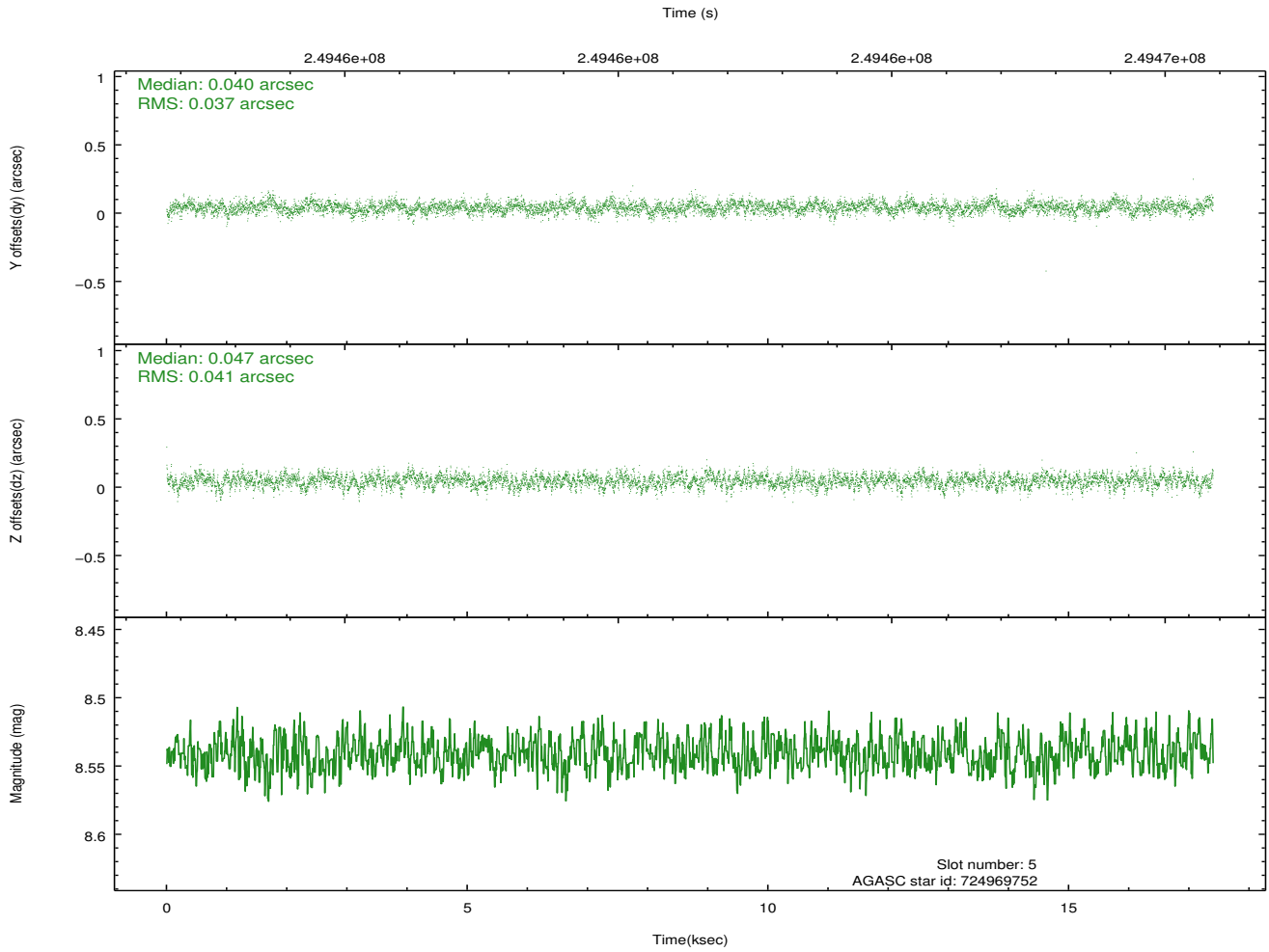
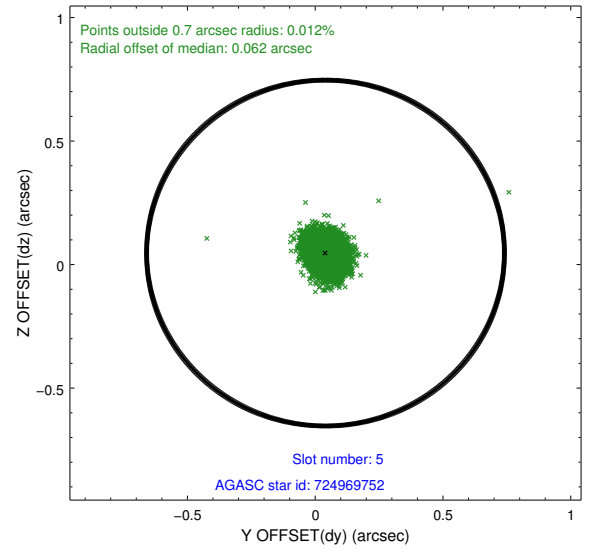
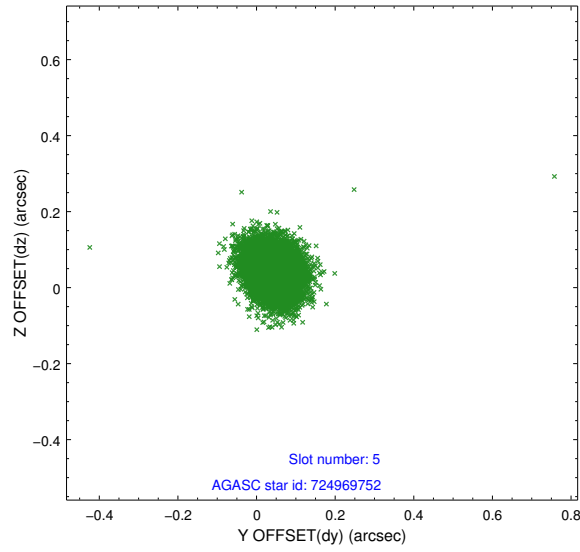


## 2.4.2 Slot 4

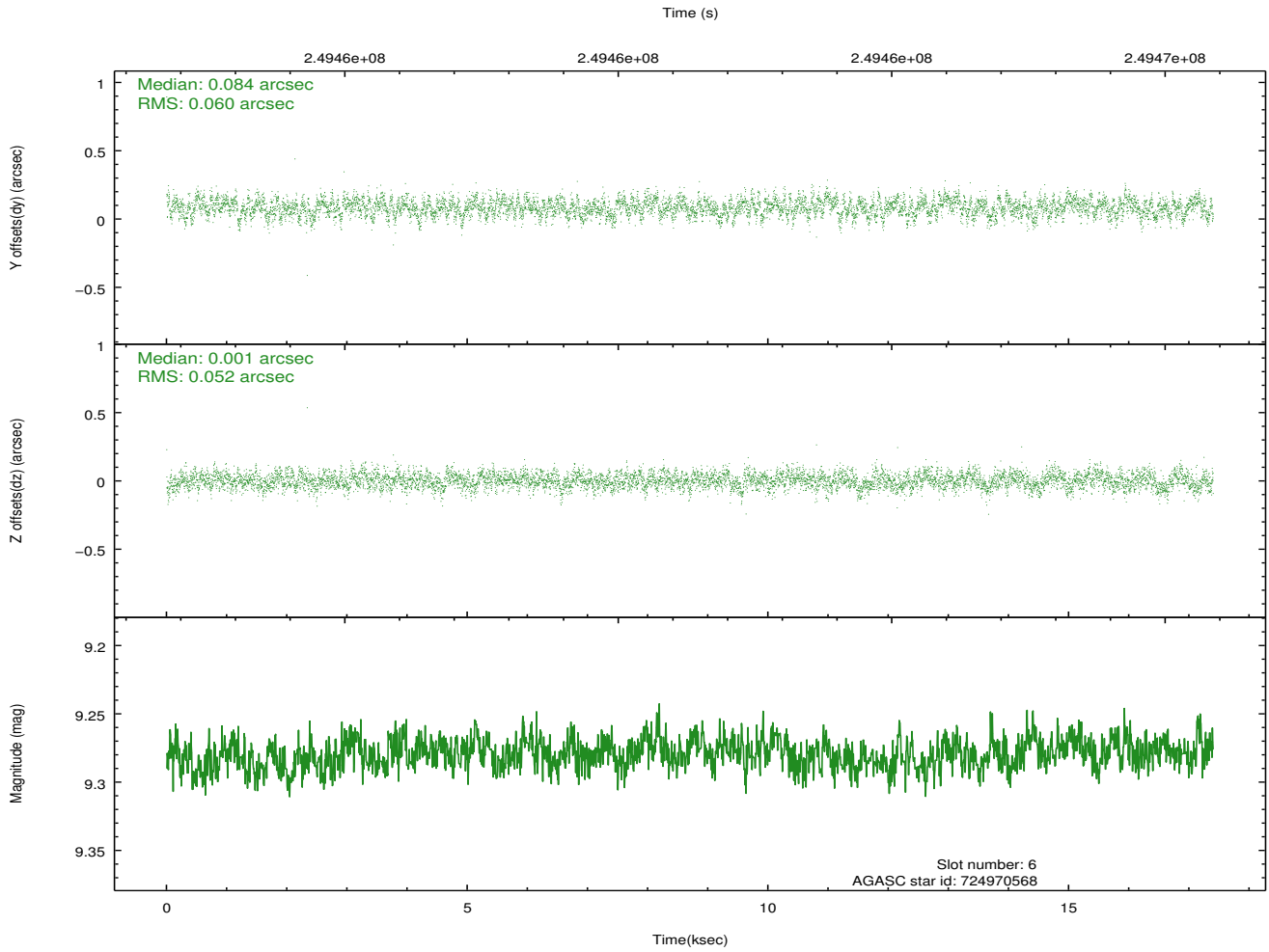
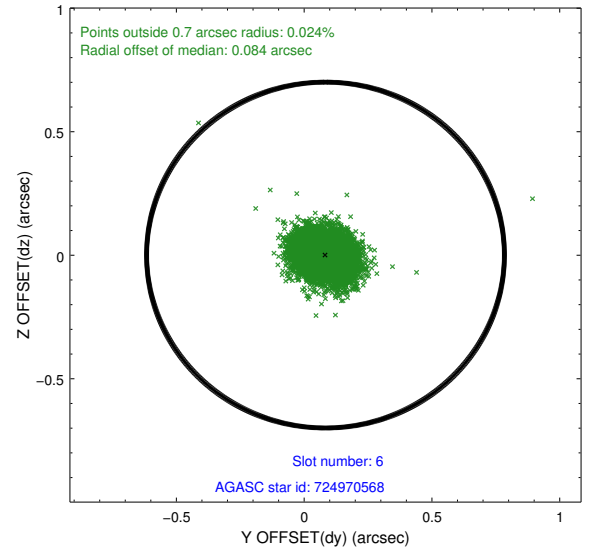
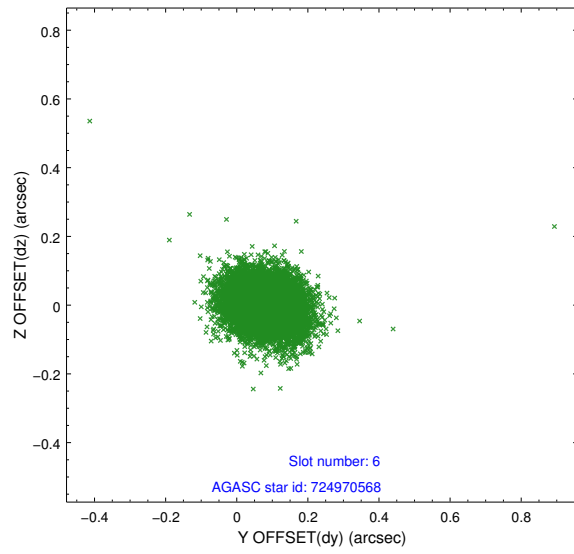




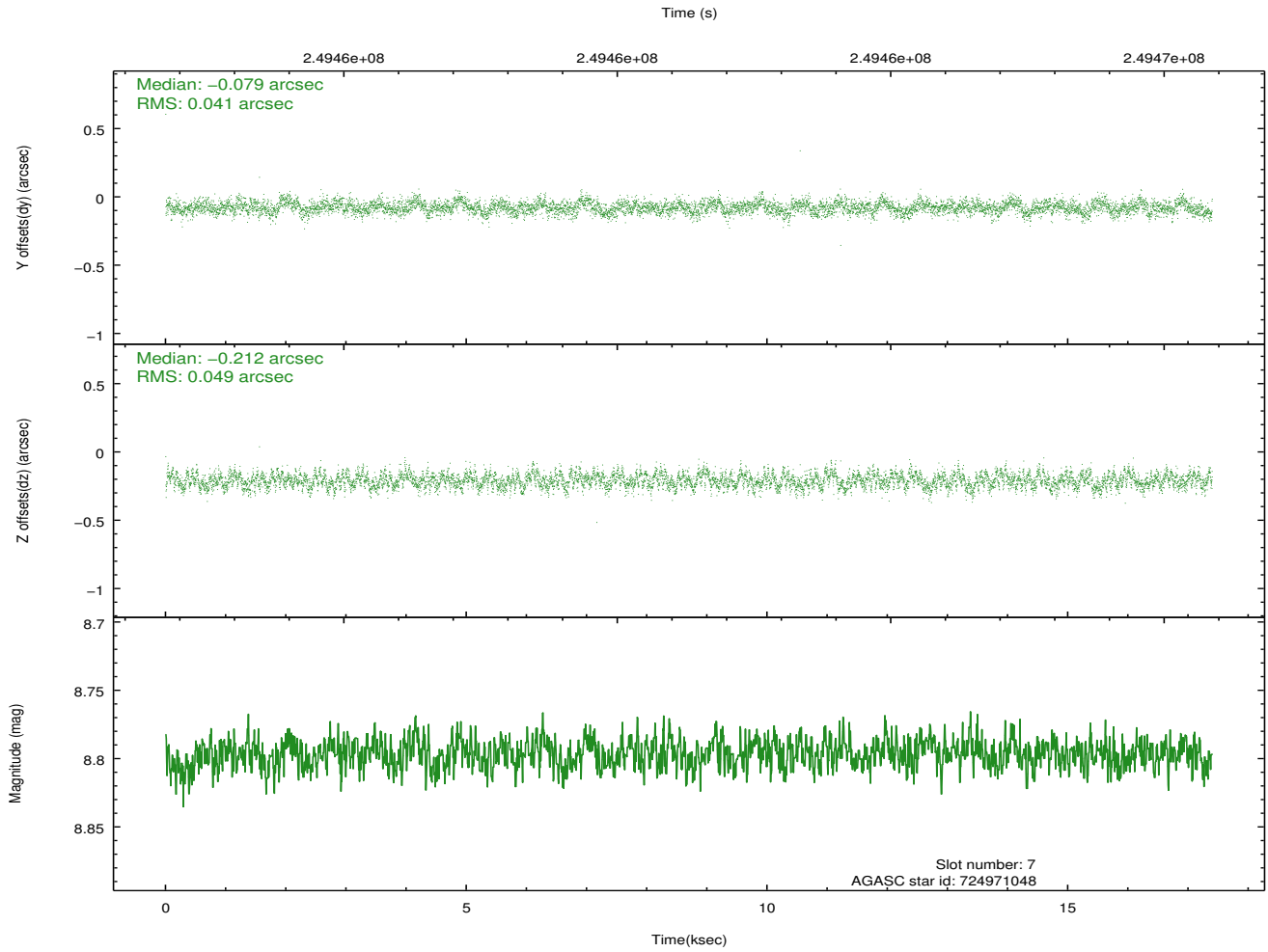
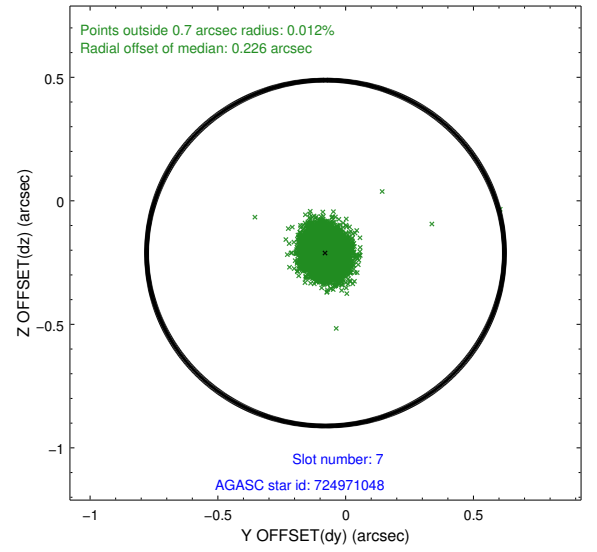
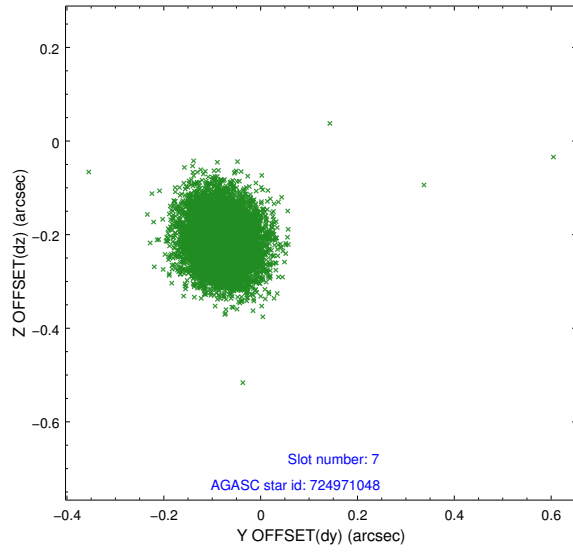
### 2.4.3 Slot 5



## 2.4.4 Slot 6

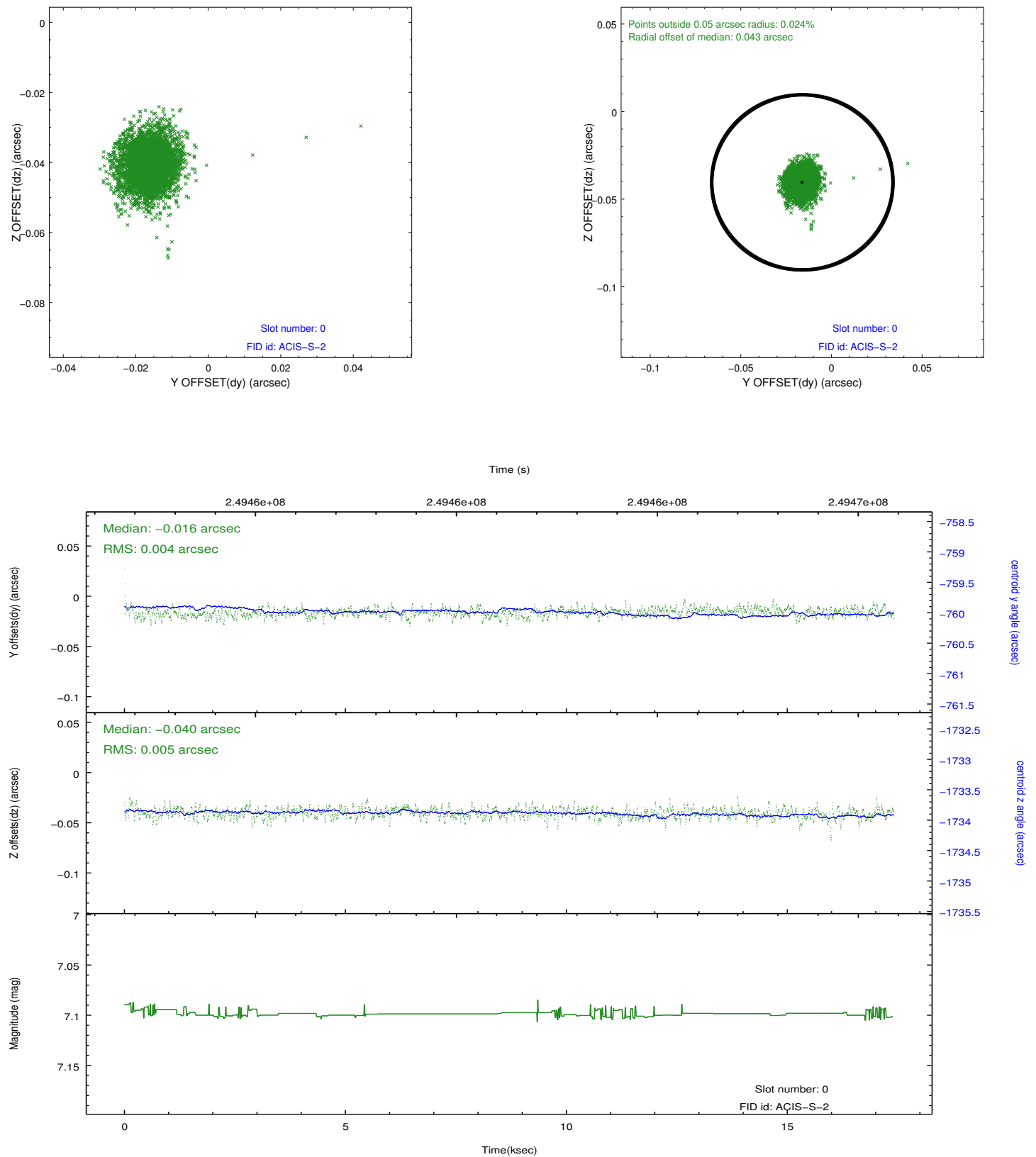


### 2.4.5 Slot 7

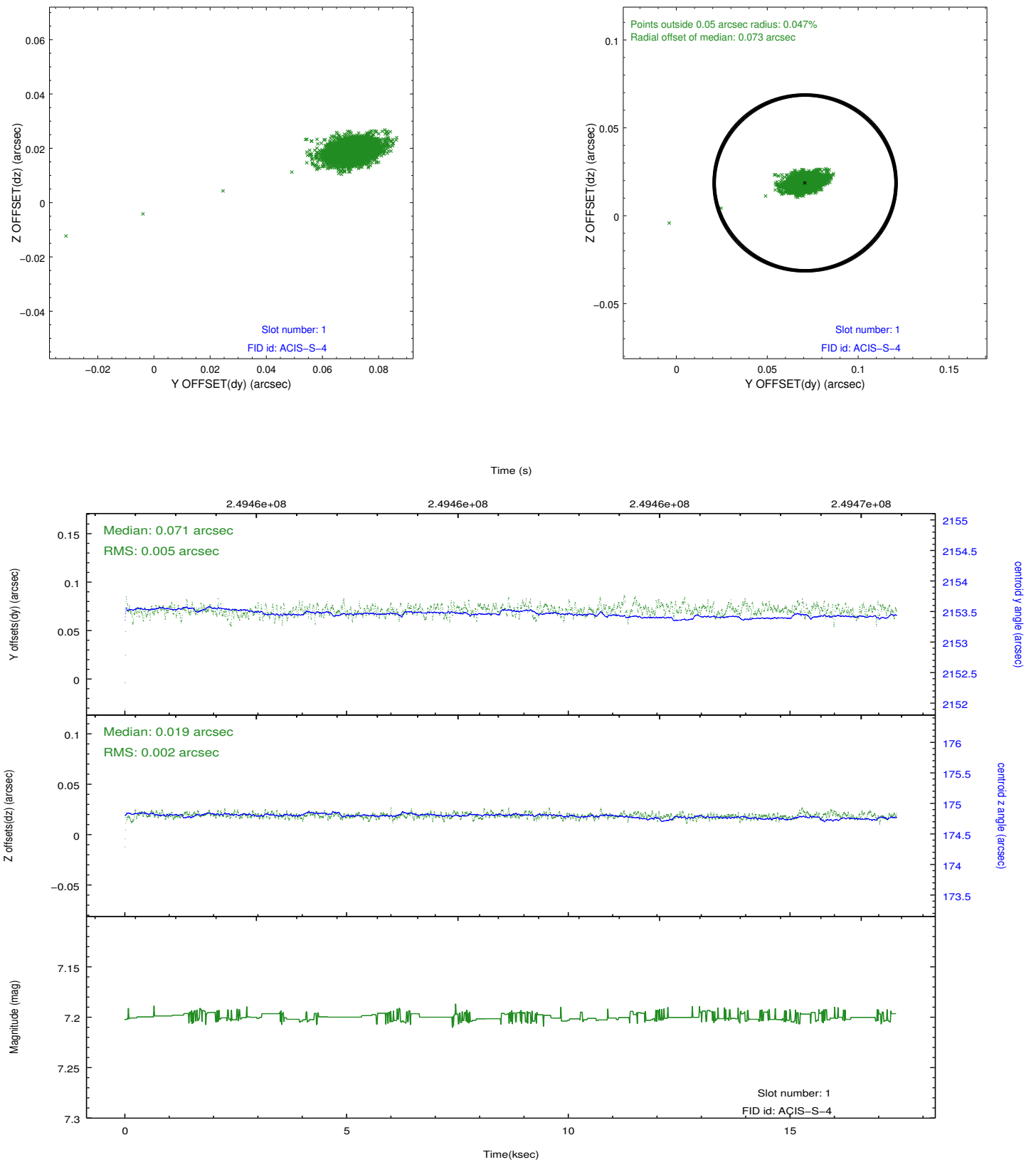


## 2.5 FID Slots

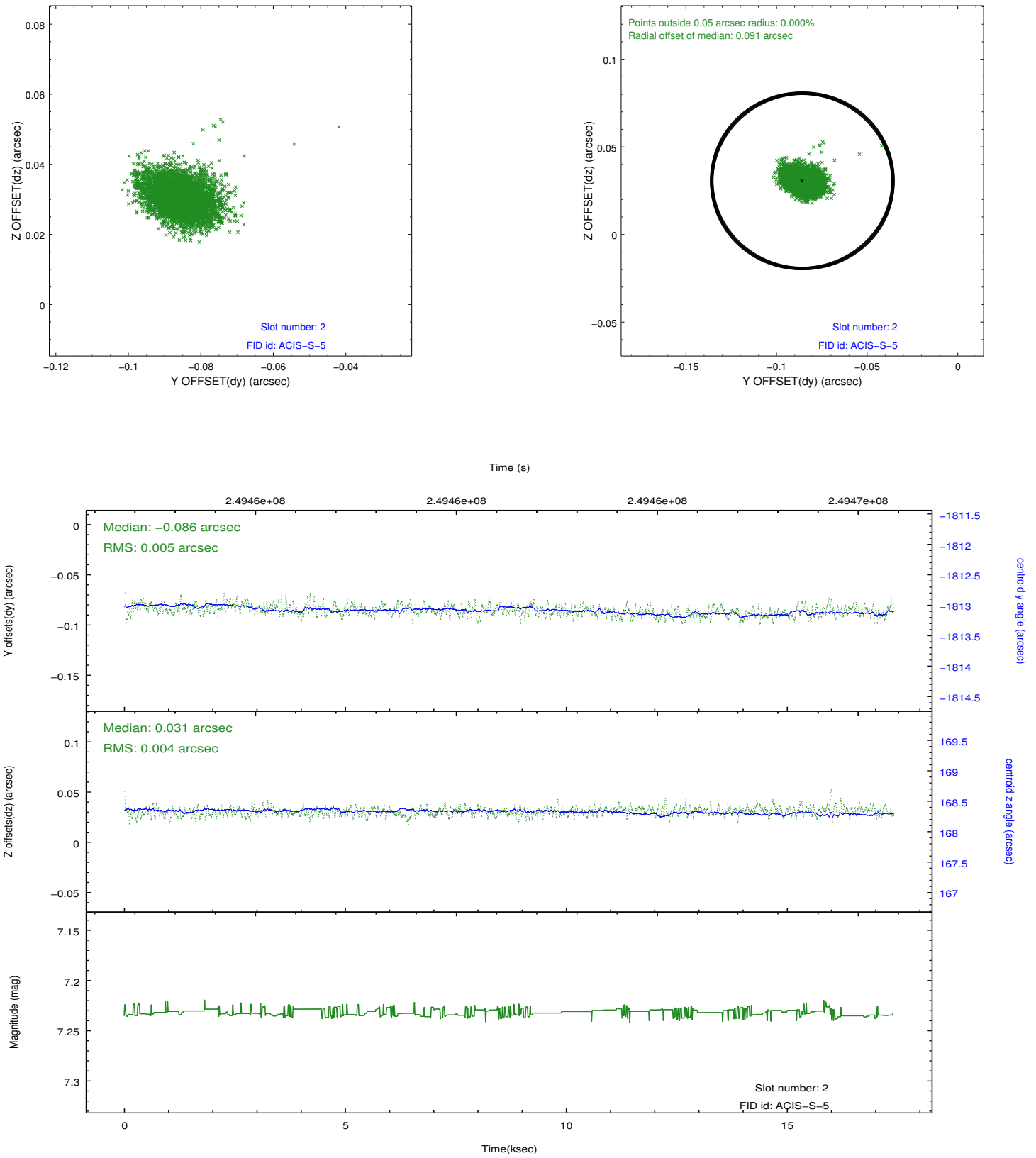
### 2.5.1 Slot 0



## 2.5.2 Slot 1



### 2.5.3 Slot 2



## A Summary

### A.1 Status

V&V Scientist	Jen Lauer
V&V Date (YYYY-MM-DD)	2012.03.19
V&V Edition	1
V&V Disposition and Status	OK
V&V Charge Time	17.39839

### A.2 Comments