

V&V Reference Report

L2 ASCDS Version : 7.6.7.1

Observation 6365 - L2 Version 002
Chandra X-Ray Center

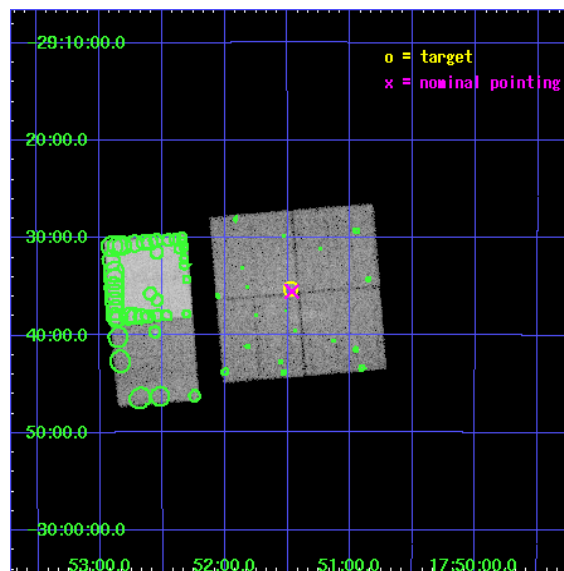
L2 Processing Date : Apr 2 2006

Contents

1	Front	2
2	OBI	3
2.1	OBI	3
2.1.1	Images	3
2.1.2	Bias	3
2.1.3	Parameters	4
2.1.4	Events	4
2.2	Compared Parameters	5
2.3	Aspect	6
2.4	Star Slots	9
2.4.1	Slot 3	9
2.4.2	Slot 4	10
2.4.3	Slot 5	11
2.4.4	Slot 6	12
2.4.5	Slot 7	13
2.5	FID Slots	14
2.5.1	Slot 0	14
2.5.2	Slot 1	15
2.5.3	Slot 2	16
3	Point Sources	17
A	Summary	18
A.1	Status	18
A.2	Comments	18

1 Front

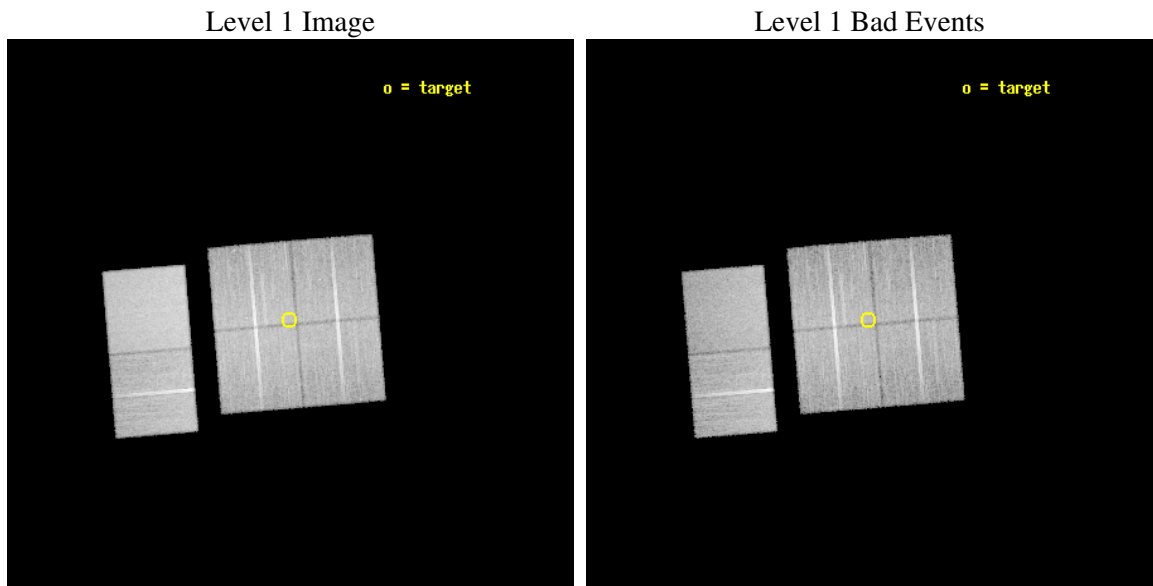
seq_num	600453
obs_id	6365
title	Galactic Bulge Chandra-HST Survey
observer	Prof. Jonathan Grindlay
object	Limiting Window
dtcycle	0
cycle	P
ra_targ	267.86875
dec_targ	-29.588
ra_nom	267.8662952529
dec_nom	-29.592120735443
roll_nom	265.26689775289
revision	2
ontime	20953.558951616
livetime	20688.232371452
ontime0	20950.318061084
ontime1	20956.79992193
ontime2	20953.559051245
ontime3	20953.558951616
ontime6	20956.79992193
ontime7	20956.79992193
l2events	213201



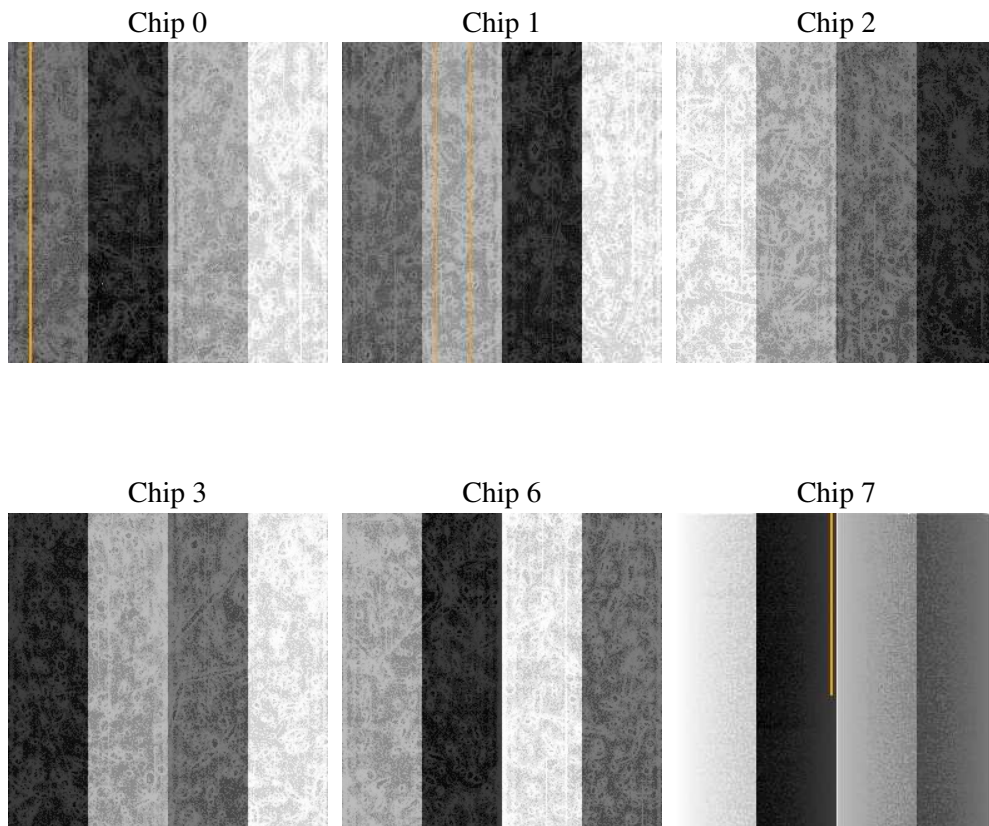
2 OBI

2.1 OBI

2.1.1 Images



2.1.2 Bias



2.1.3 Parameters

obi_num	1
ascdsver	7.6.7.1
caldsver	3.2.1
date	2006-04-02T18:15:49
revision	2

sched_exp_time	21000.000000
ontime	20959.552925944
ontime0	20956.312035412
ontime1	20962.793896258
ontime2	20959.553025573
ontime3	20959.552925944
ontime6	20962.793896258
ontime7	20962.793896258
l1events	1060071

2.1.4 Events

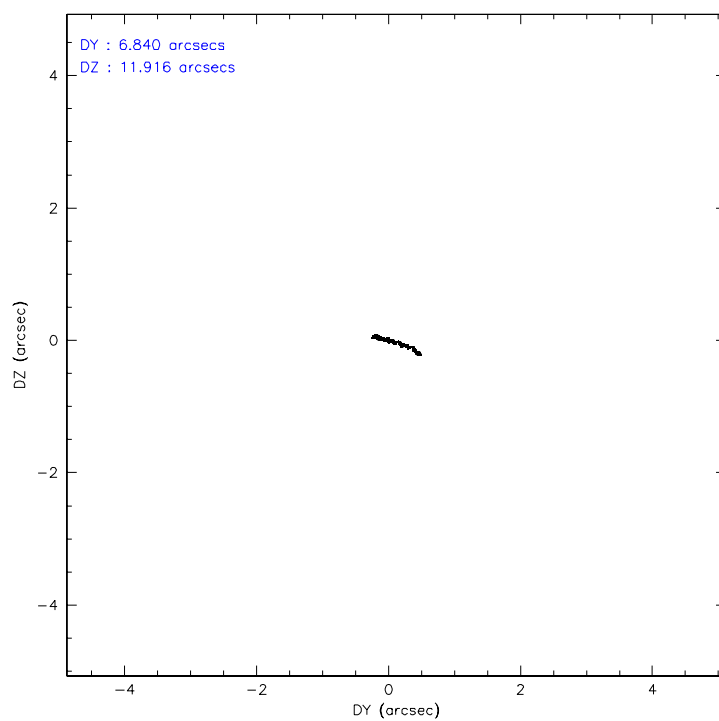
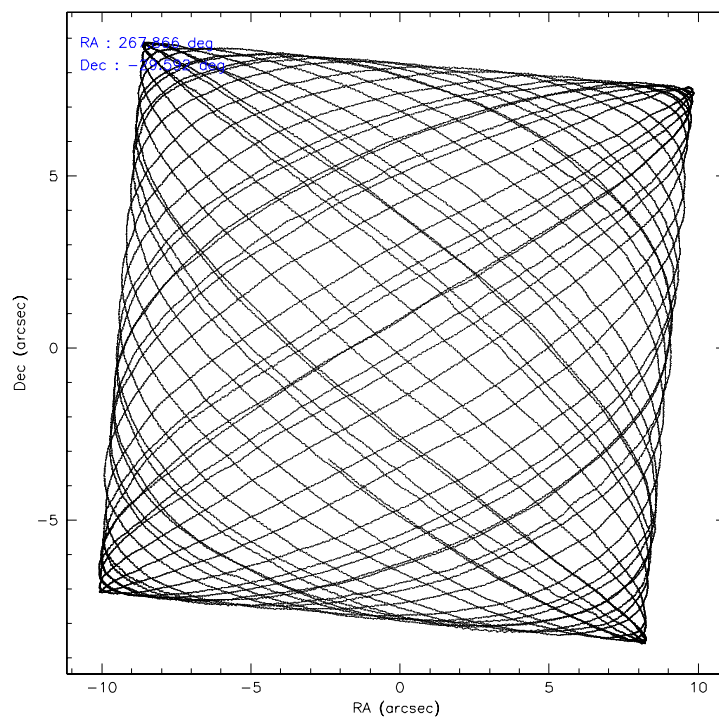
	ccd 0	ccd 1	ccd 2	ccd 3	ccd 6	ccd 7
level 1 events	155153	153258	172967	169226	177668	231799
rejected events	127255	125552	144504	141710	151322	138906
rejected %	82%	81%	83%	83%	85%	59%

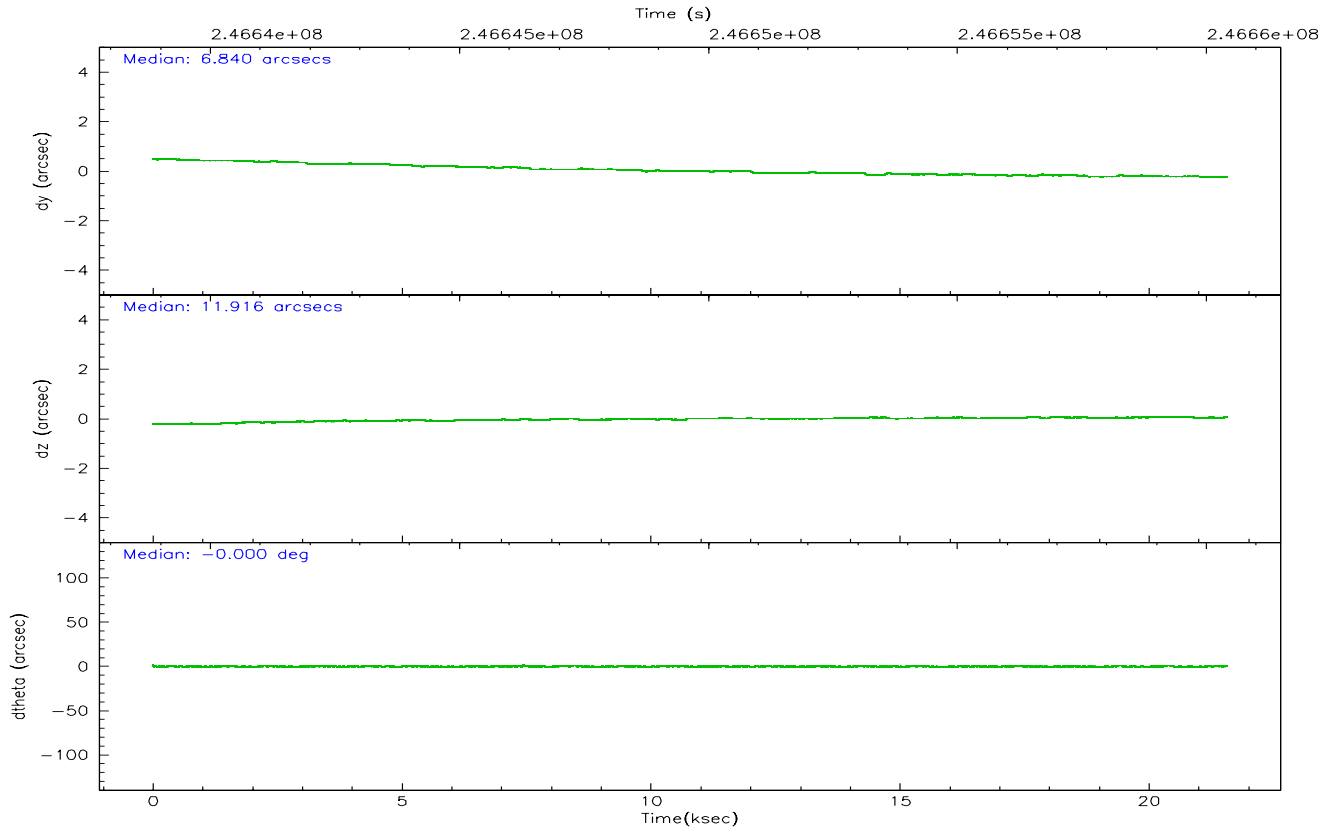
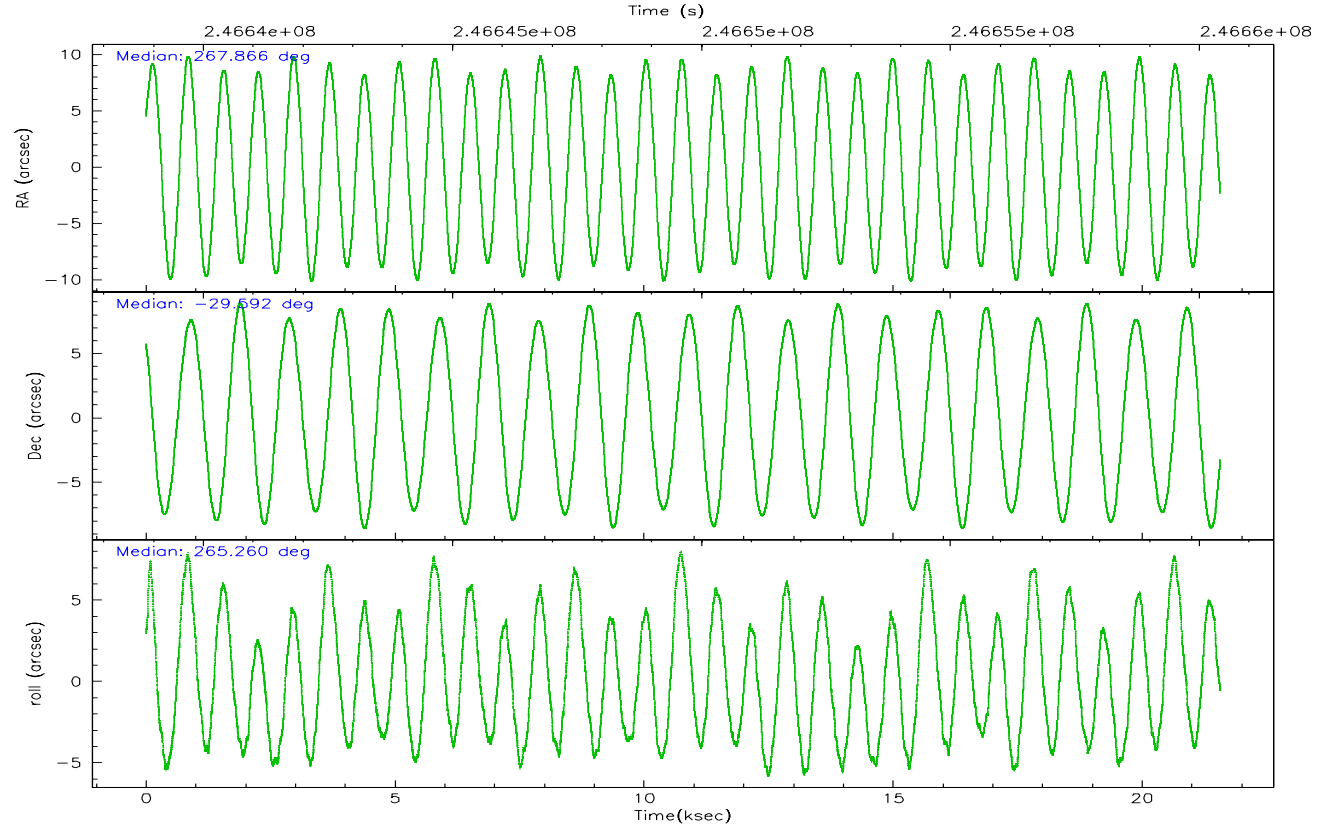
	ccd 0	ccd 1	ccd 2	ccd 3	ccd 6	ccd 7
grade 0 events	15337	14057	16416	15474	13364	6548
	9%	9%	9%	9%	7%	2%
grade 1 events	113	106	153	138	106	143
	0%	0%	0%	0%	0%	0%
grade 2 events	4988	5219	4801	4376	4854	24089
	3%	3%	2%	2%	2%	10%
grade 3 events	2154	2224	2047	2090	2100	5111
	1%	1%	1%	1%	1%	2%
grade 4 events	1929	2114	1988	2063	2026	4897
	1%	1%	1%	1%	1%	2%
grade 5 events	6327	7020	6166	7505	7826	14821
	4%	4%	3%	4%	4%	6%
grade 6 events	3501	4106	3215	3514	4008	52261
	2%	2%	1%	2%	2%	22%
grade 7 events	120804	118412	138181	134066	143384	123929
	77%	77%	79%	79%	80%	53%

2.2 Compared Parameters

Parameter	Planned	Actual	Parameter	Planned	Actual
Instrument	ACIS	ACIS	Obspar format version number	6	6
Detector	ACIS-012367	ACIS-012367	Obspar file type	PREDICTED	ACTUAL
Grating	NONE	NONE	Obspar update status	NONE	UPDATED
Data mode	FAINT	FAINT	On-chip summing requested	N	N
Observation mode	POINTING	POINTING	Subarray requested	NONE	NONE
Pointing RA	267.852718	267.8662952528988	Alternating exposures requested	N	N
Pointing Dec	-29.567385	-29.59212073544294	Primary exposure time	0.000000	3.2
Pointing Roll	265.051512	265.266897752886			
SIM focus pos (mm)	-0.782348	-0.7809083437167272			
SIM defocus (mm)	0	0.001439871863259334			
SIM translation stage pos (mm)	-233.592463	-233.5874344608287			
SIM translation stage offset (mm)	0	-0.005018542100998502			
Observation start time	246639416.184000	246638260.8219			
Observation start date	2005-10-25T14:55:52	2005-10-25T14:37:40			
Observation end time	246660416.184000	246662060.298			
Observation end date	2005-10-25T20:45:52	2005-10-25T21:14:20			
Read mode	TIMED	TIMED			

2.3 Aspect



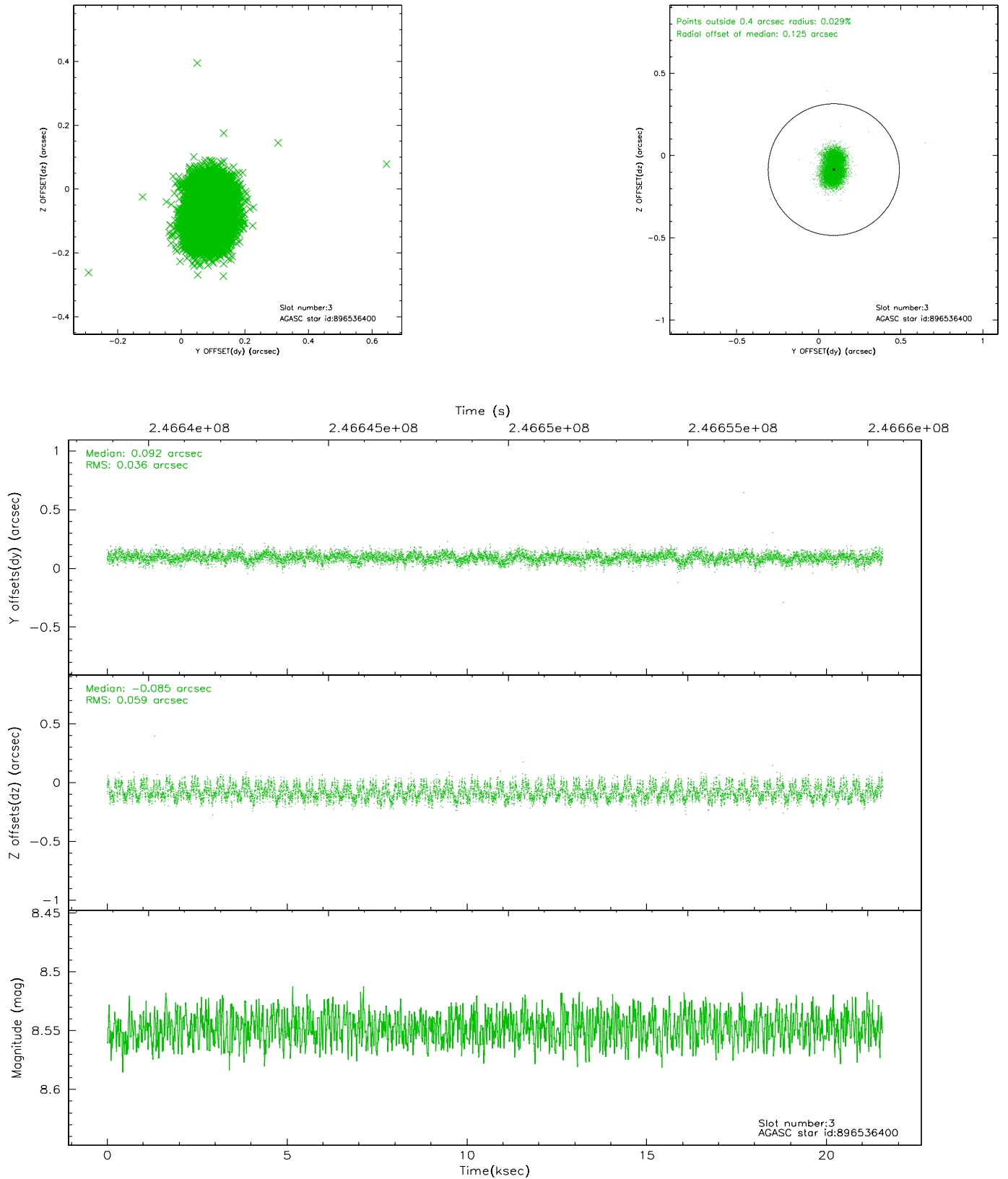


Slot Statistics

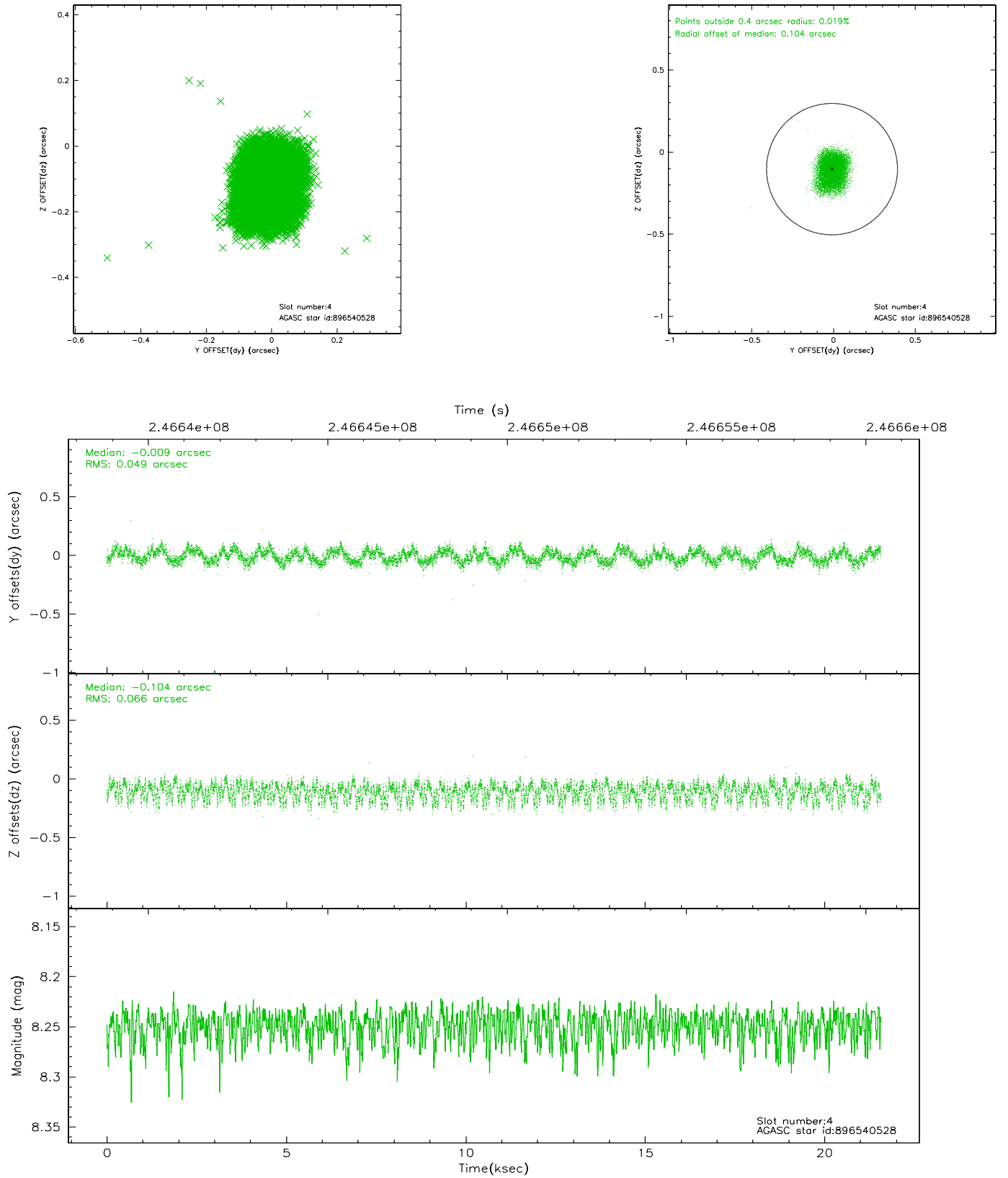
slot	status	id	mag	n_pts	med_dy	med_dz	dr1	dr2	ra	dec	mean_y	mean_z
0	FID	ACIS-I-1	7.24	5262	0.032	0.005	0.007	0.014	0.000000	0.000000	932.80	-835.43
1	FID	ACIS-I-5	7.23	5261	-0.136	0.060	0.008	0.014	0.000000	0.000000	-1815.33	1062.11
2	FID	ACIS-I-6	7.25	5262	0.013	0.005	0.008	0.013	0.000000	0.000000	398.22	1706.68
3	GUIDE	896536400	8.55	10520	0.092	-0.085	0.074	0.118	267.359146	-29.438655	-324.41	-1581.30
4	GUIDE	896540528	8.25	10523	-0.009	-0.104	0.088	0.138	267.368305	-29.314773	-771.23	-1593.00
5	GUIDE	896543792	9.84	10490	0.046	0.036	0.123	0.200	267.148052	-29.957989	1597.74	-2067.59
6	GUIDE	898247688	8.66	10520	-0.145	0.240	0.081	0.131	268.426687	-29.012154	-2142.80	1628.27
7	GUIDE	898248800	8.24	10520	0.020	-0.086	0.062	0.098	267.977609	-29.931731	1273.38	501.76

2.4 Star Slots

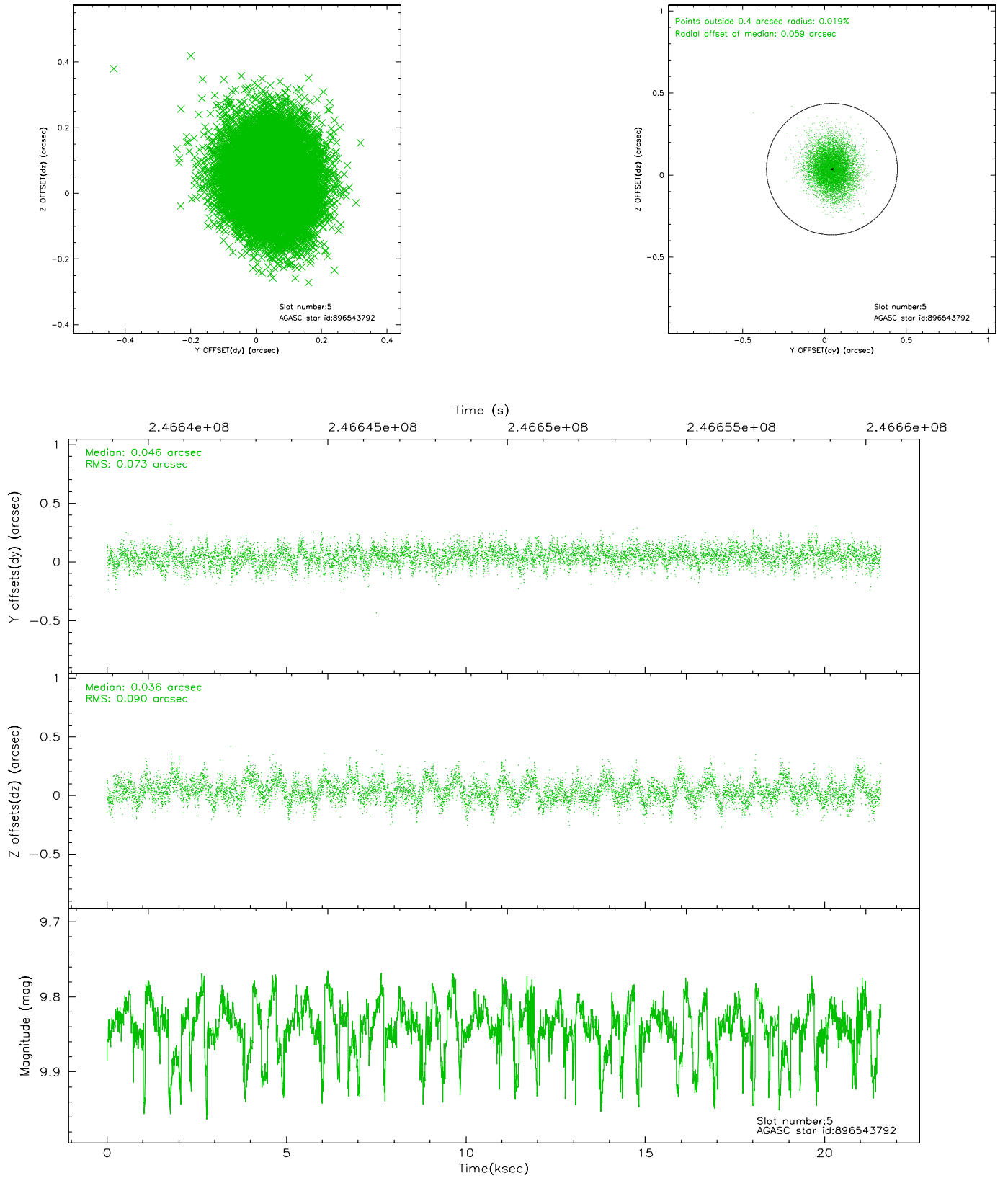
2.4.1 Slot 3



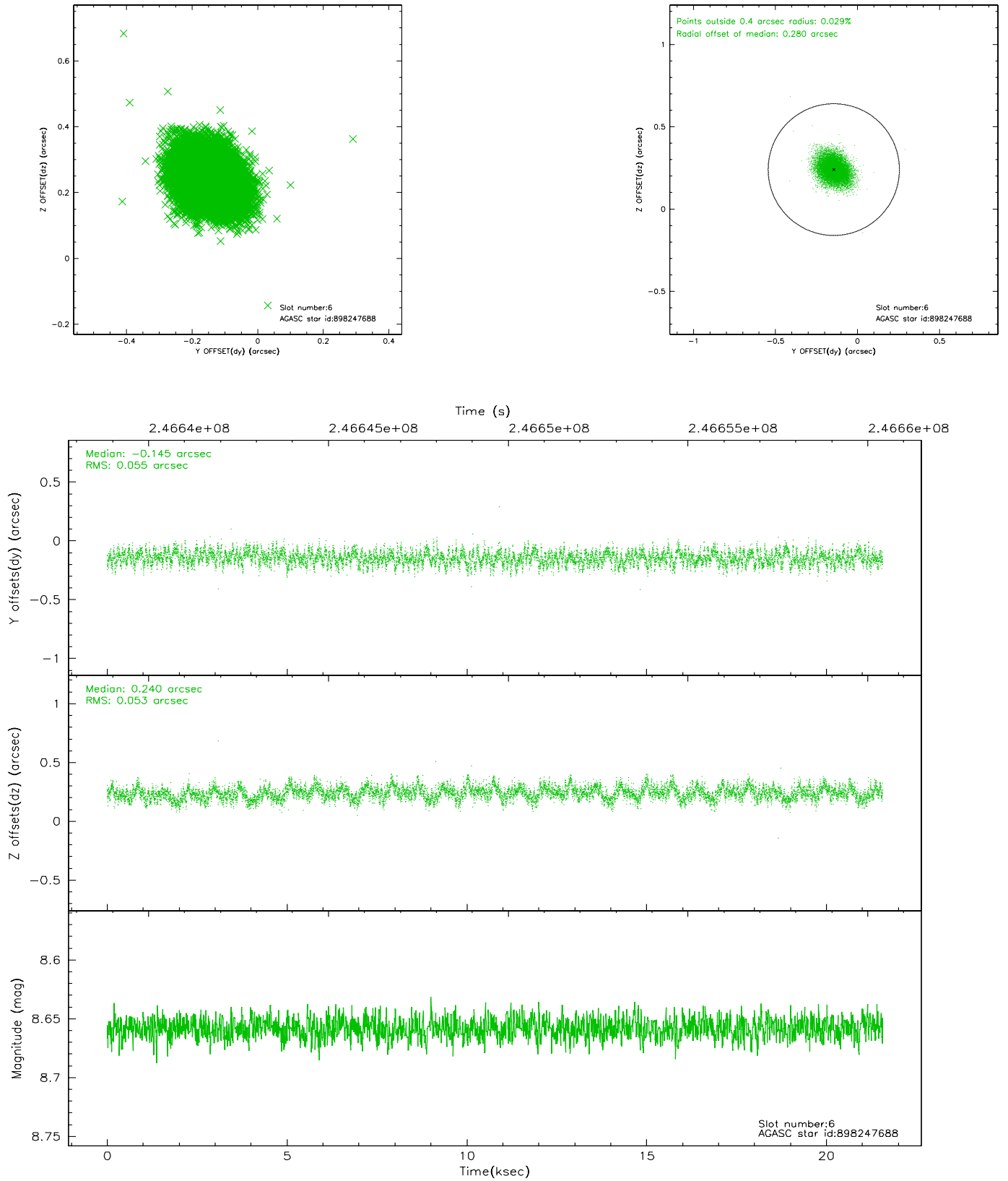
2.4.2 Slot 4



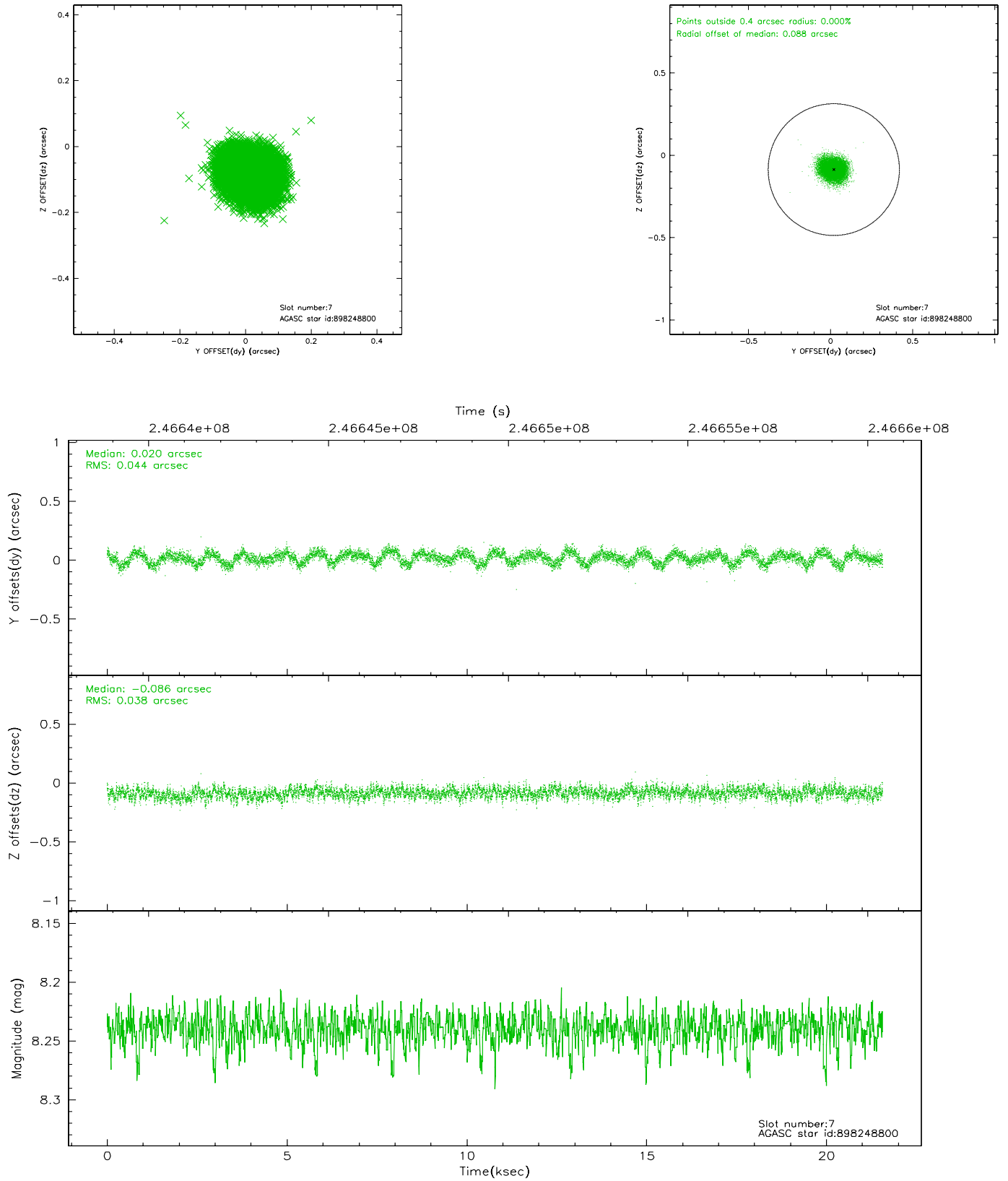
2.4.3 Slot 5



2.4.4 Slot 6

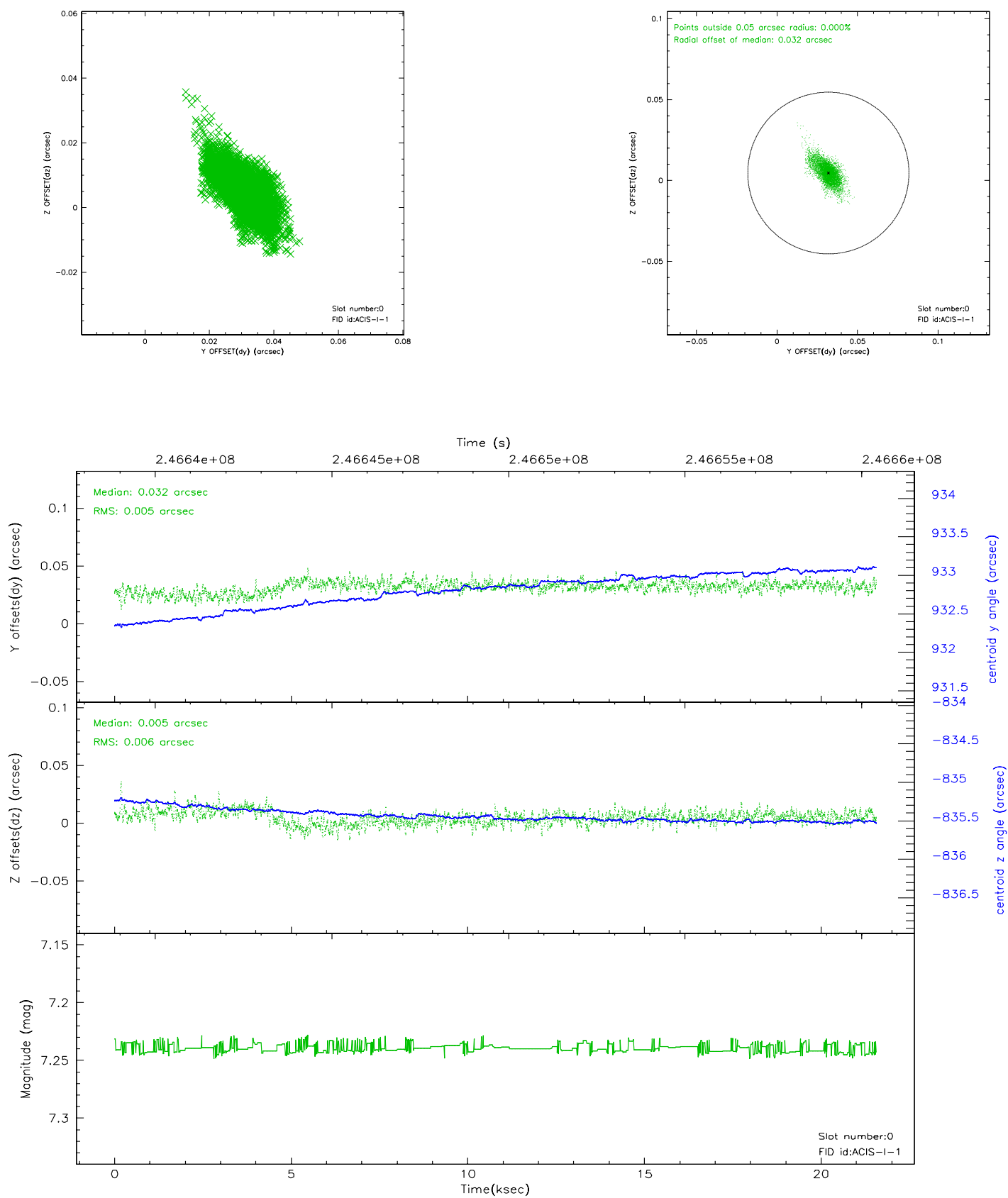


2.4.5 Slot 7

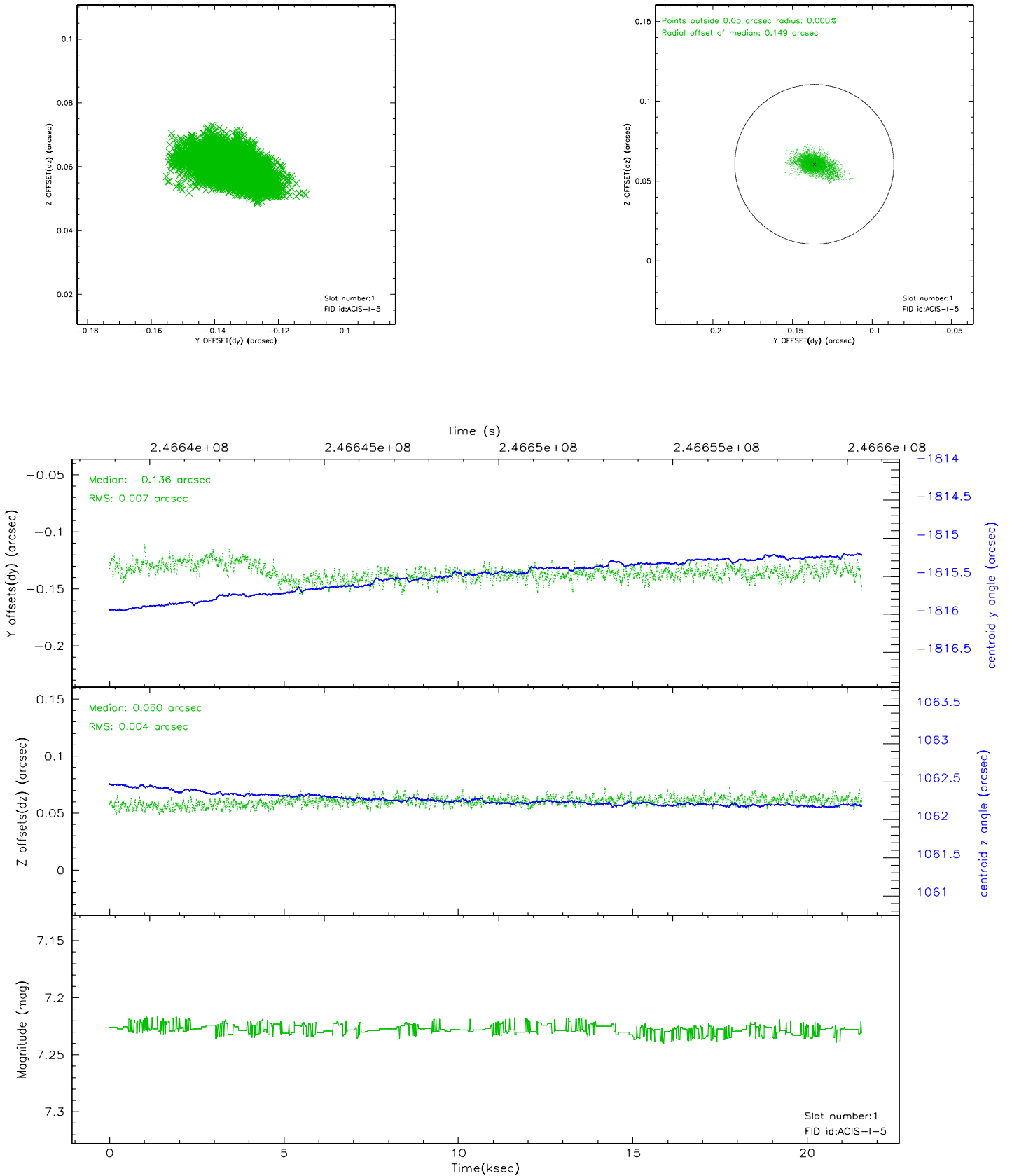


2.5 FID Slots

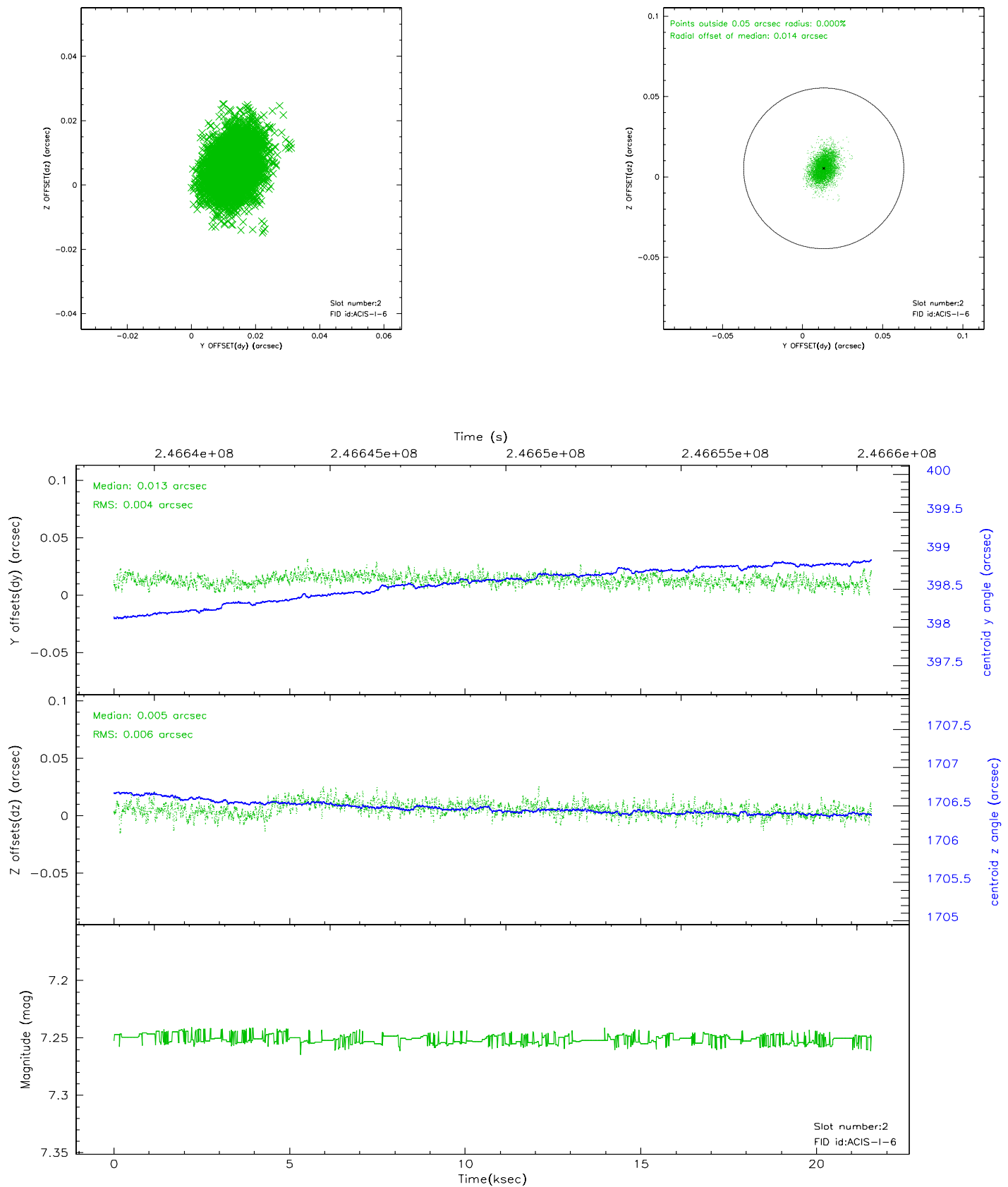
2.5.1 Slot 0



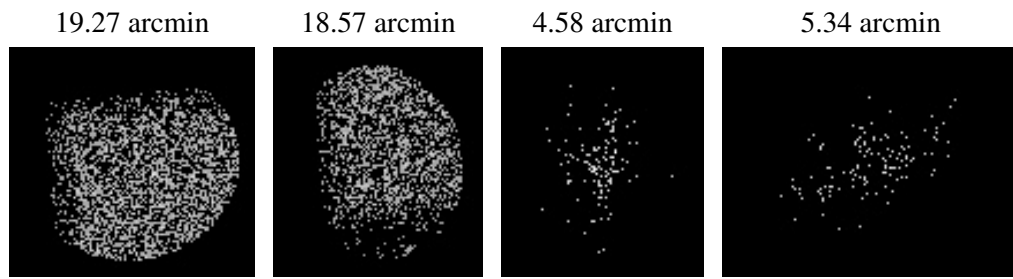
2.5.2 Slot 1



2.5.3 Slot 2



3 Point Sources



A Summary

A.1 Status

V&V Scientist	Beth Sundheim
V&V Date (YYYY-MM-DD)	2006.04.03
V&V Edition	1
V&V Disposition and Status	OK
V&V Charge Time	20.95355

A.2 Comments