

# V&V Reference Report

## L2 ASCDS Version : 7.6.7.1

Observation 6315 - L2 Version 002  
Chandra X-Ray Center

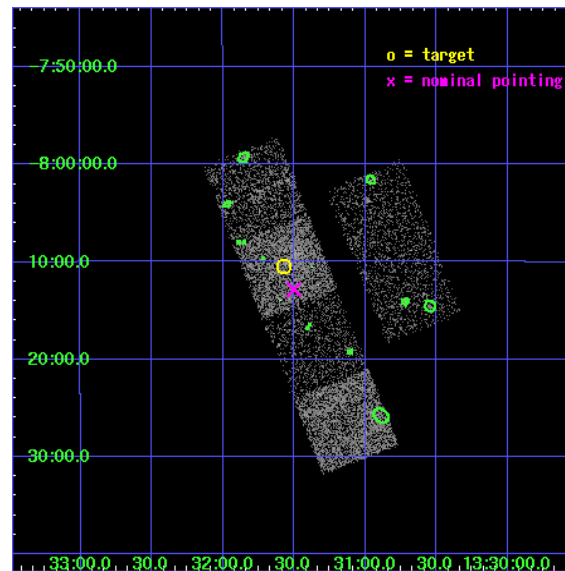
L2 Processing Date : Mar 11 2006

## Contents

<b>1</b>	<b>Front</b>	<b>2</b>
<b>2</b>	<b>OBI</b>	<b>3</b>
2.1	OBI . . . . .	3
2.1.1	Images . . . . .	3
2.1.2	Bias . . . . .	3
2.1.3	Parameters . . . . .	4
2.1.4	Events . . . . .	4
2.2	Compared Parameters . . . . .	5
2.3	Aspect . . . . .	6
2.4	Star Slots . . . . .	9
2.4.1	Slot 3 . . . . .	9
2.4.2	Slot 4 . . . . .	10
2.4.3	Slot 5 . . . . .	11
2.4.4	Slot 6 . . . . .	12
2.4.5	Slot 7 . . . . .	13
2.5	FID Slots . . . . .	14
2.5.1	Slot 0 . . . . .	14
2.5.2	Slot 1 . . . . .	15
2.5.3	Slot 2 . . . . .	16
<b>3</b>	<b>Point Sources</b>	<b>17</b>
<b>A</b>	<b>Summary</b>	<b>18</b>
A.1	Status . . . . .	18
A.2	Comments . . . . .	18

# 1 Front

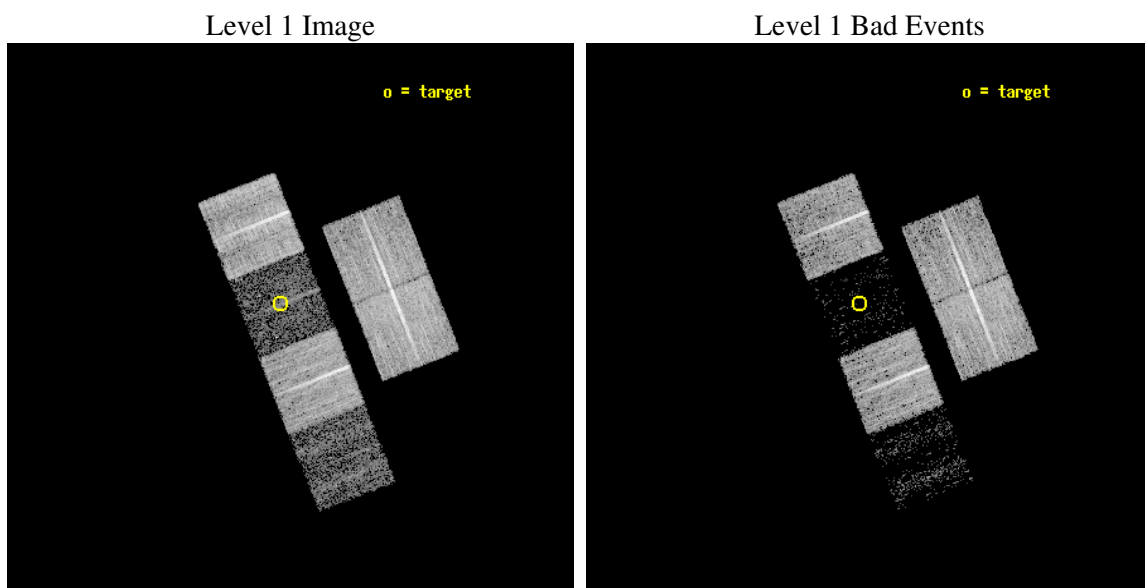
seq_num	100054
obs_id	6315
title	Comet 9P/Tempel 1 During the Deep Impact Encounter
observer	Dr. Carey Lisse
object	9P/Tempel 1
dtcycle	0
cycle	P
ra_targ	202.892948
dec_targ	-8.174801
ra_nom	202.87536015569
dec_nom	-8.2139711992471
roll_nom	248.32620115554
revision	2
ontime	10182.399962068
livetime	10053.464282643
ontime2	10182.399962068
ontime3	10182.399962068
ontime5	10182.399962068
ontime6	10182.399962068
ontime7	10182.399962068
ontime8	10182.399962068
l2events	15241



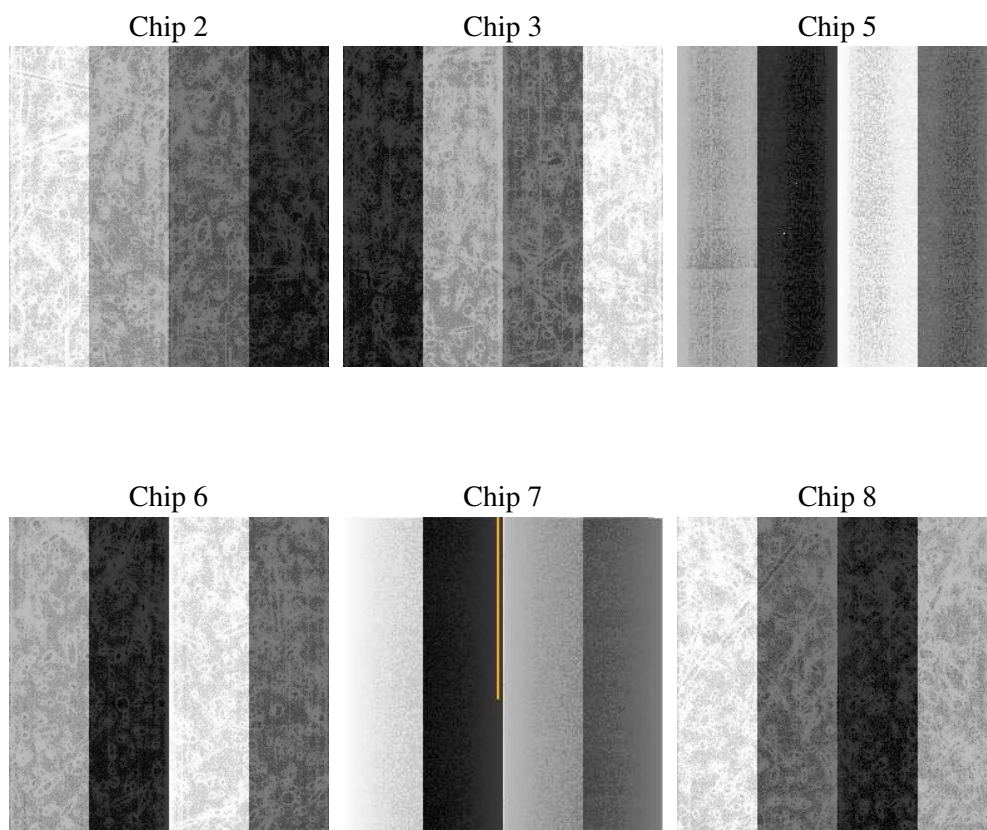
## 2 OBI

### 2.1 OBI

#### 2.1.1 Images



#### 2.1.2 Bias



### 2.1.3 Parameters

obi_num	0
ascdsver	7.6.7.1
caldsver	3.2.1
date	2006-03-12T00:24:08
revision	2

sched_exp_time	10000.000000
ontime	10507.336420178
ontime2	10507.336440116
ontime3	10507.336440116
ontime5	10507.336420178
ontime6	10507.336420178
ontime7	10507.336420178
ontime8	10507.336420178
l1events	211280

### 2.1.4 Events

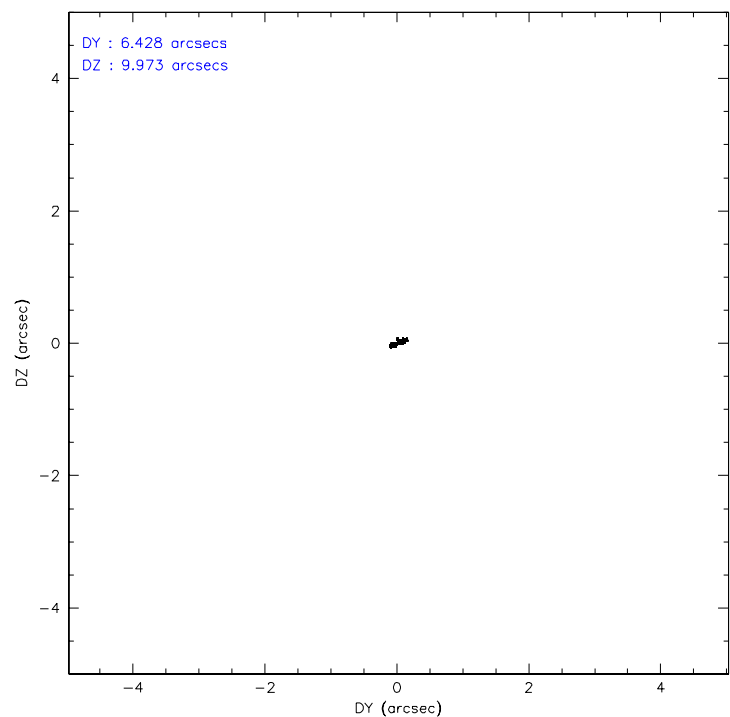
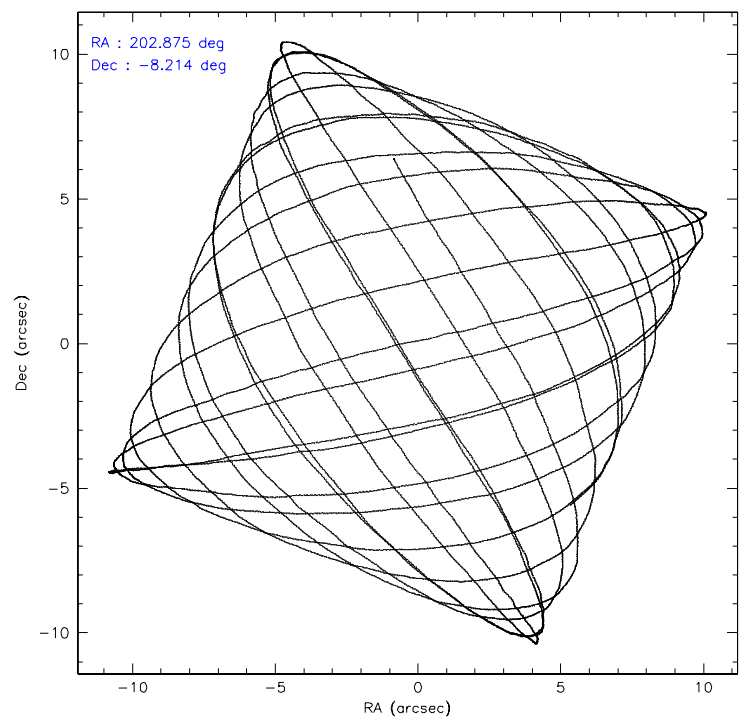
	ccd 2	ccd 3	ccd 5	ccd 6	ccd 7	ccd 8
level 1 events	53507	44828	8033	44475	7141	53296
rejected events	51491	43277	3013	42579	1543	40139
rejected %	96%	96%	37%	95%	21%	75%

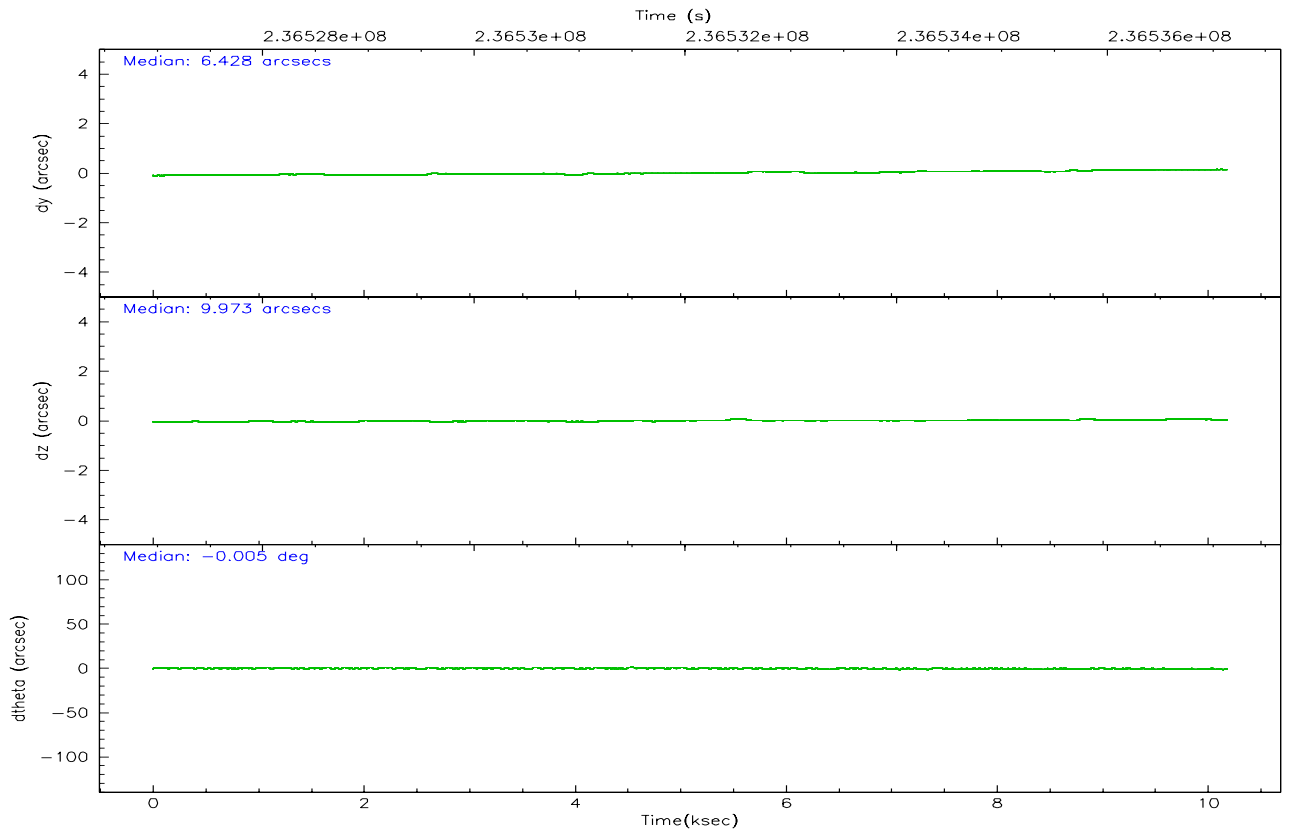
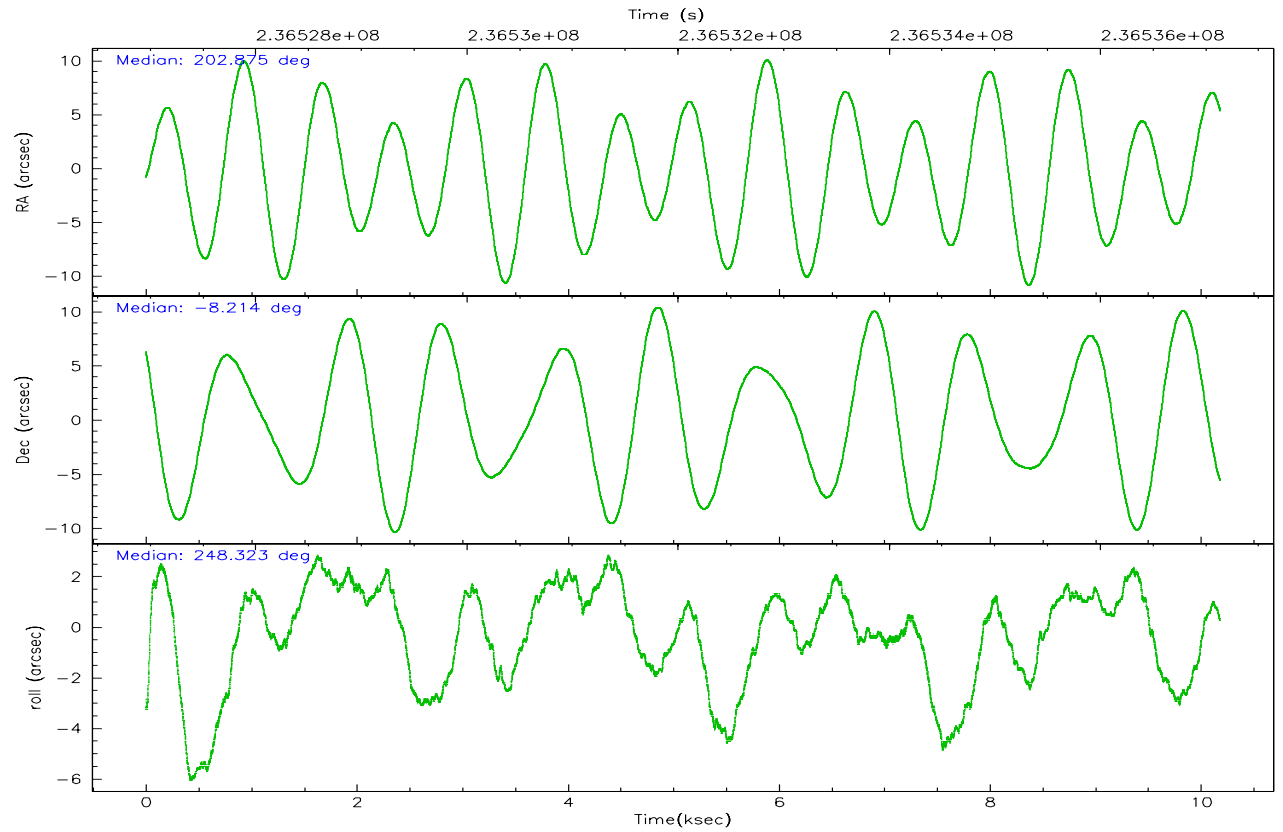
	ccd 2	ccd 3	ccd 5	ccd 6	ccd 7	ccd 8
grade 0 events	798	749	1111	981	1694	3720
	1%	1%	13%	2%	23%	6%
grade 1 events	21	12	25	16	25	27
	0%	0%	0%	0%	0%	0%
grade 2 events	421	196	2086	341	1910	2958
	0%	0%	25%	0%	26%	5%
grade 3 events	292	270	671	247	830	1683
	0%	0%	8%	0%	11%	3%
grade 4 events	332	236	614	265	721	1533
	0%	0%	7%	0%	10%	2%
grade 5 events	60	38	410	39	185	266
	0%	0%	5%	0%	2%	0%
grade 6 events	219	149	725	127	659	3608
	0%	0%	9%	0%	9%	6%
grade 7 events	51364	43178	2391	42459	1117	39501
	95%	96%	29%	95%	15%	74%

## 2.2 Compared Parameters

Parameter	Planned	Actual	Parameter	Planned	Actual
Instrument	ACIS	ACIS	Obspar format version number	6	6
Detector	ACIS-235678	ACIS-235678	Obspar file type	PREDICTED	ACTUAL
Grating	NONE	NONE	Obspar update status	NONE	UPDATED
Data mode	VFAINT	VFAINT	On-chip summing requested	N	N
Observation mode	POINTING	POINTING	Subarray requested	NONE	NONE
Pointing RA	202.870956	202.8753601556913	Alternating exposures requested	N	N
Pointing Dec	-8.187095	-8.213971199247064	Primary exposure time	0.000000	3.2
Pointing Roll	248.168943	248.3262011555421			
SIM focus pos (mm)	-0.684267	-0.6828225247311905			
SIM defocus (mm)	0	0.001444936568705701			
SIM translation stage pos (mm)	-190.132523	-190.1400660498719			
SIM translation stage offset (mm)	0	0.00754346686406393			
Observation start time	236527140.184000	236526764.50779			
Observation start date	2005-06-30T13:57:56	2005-06-30T13:52:44			
Observation end time	236537140.184000	236537274.34577			
Observation end date	2005-06-30T16:44:36	2005-06-30T16:47:54			
Read mode	TIMED	TIMED			

## 2.3 Aspect





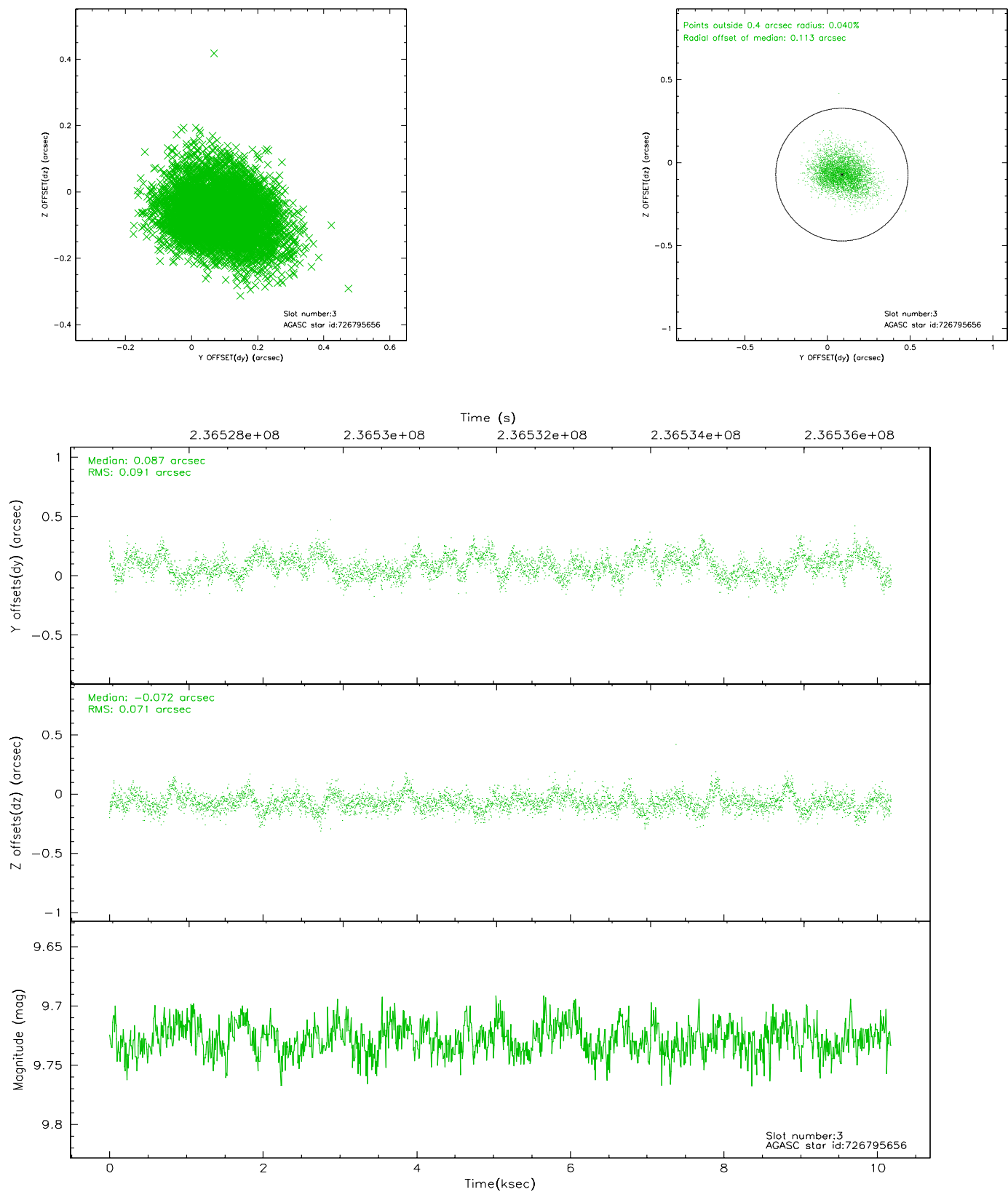
### Slot Statistics

slot	status	id	mag	n_pts	med_dy	med_dz	dr1	dr2	ra	dec	mean_y	mean_z
0	FID	ACIS-S-1	7.19	2484	0.003	-0.004	0.007	0.012	0.000000	0.000000	936.86	-1726.86
1	FID	ACIS-S-5	7.23	2485	-0.040	0.003	0.006	0.010	0.000000	0.000000	-1811.88	170.18
2	FID	ACIS-S-6	7.35	2484	0.016	0.013	0.007	0.012	0.000000	0.000000	401.88	814.73
3	GUIDE	726795656	9.73	4968	0.087	-0.072	0.123	0.199	202.576235	-8.591995	1744.12	-431.67
4	GUIDE	726797168	9.23	4965	0.038	0.047	0.091	0.152	202.692279	-8.774007	2198.68	195.71
5	GUIDE	726799000	10.11	4961	0.210	-0.133	0.157	0.272	202.090075	-8.567627	2309.20	-2070.09
6	GUIDE	726800704	9.03	4968	-0.320	0.081	0.073	0.120	202.986094	-7.587280	-2156.53	-422.23
7	GUIDE	726800992	9.59	4963	-0.018	0.075	0.095	0.151	202.715522	-8.788144	2214.28	291.44

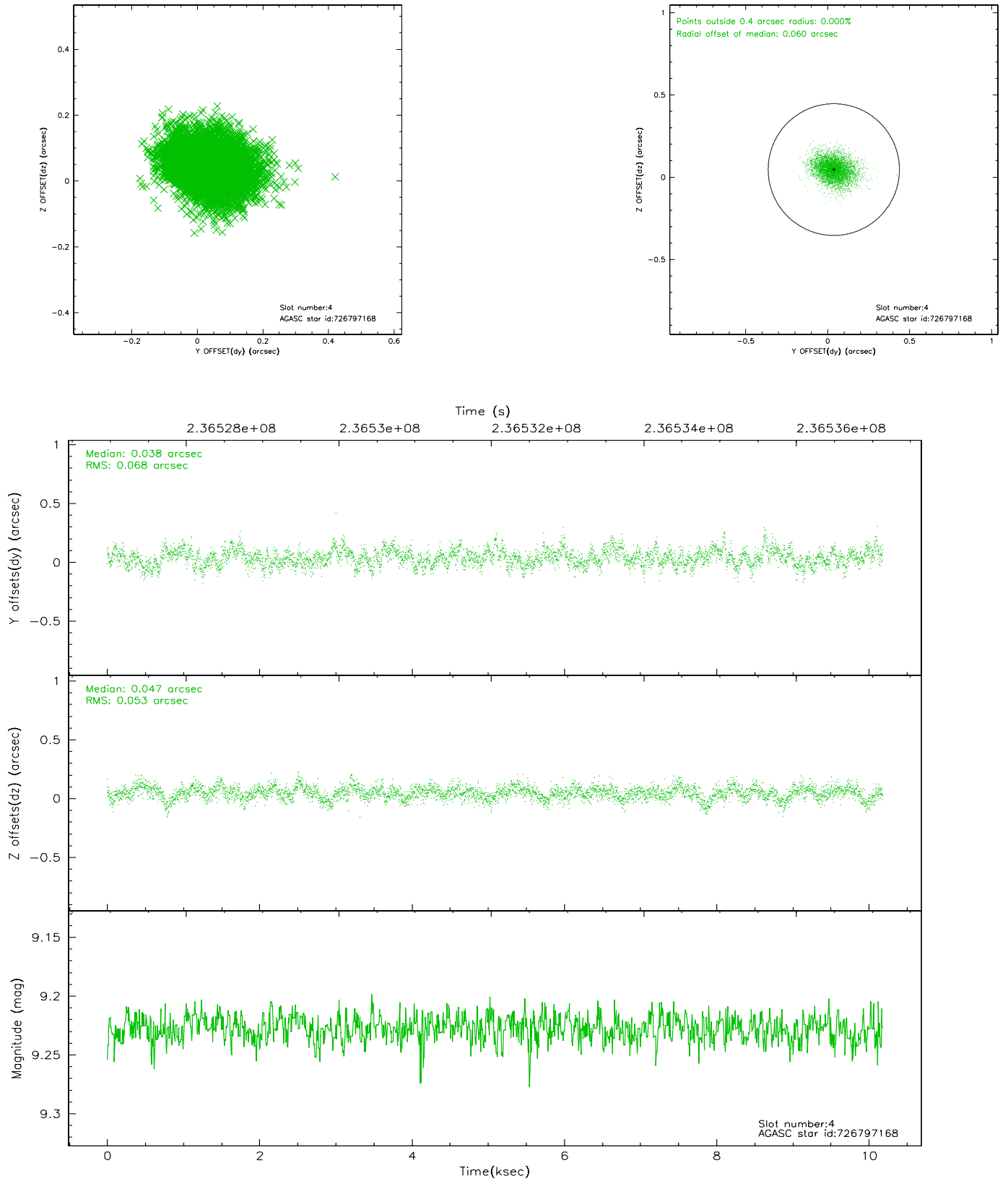


## 2.4 Star Slots

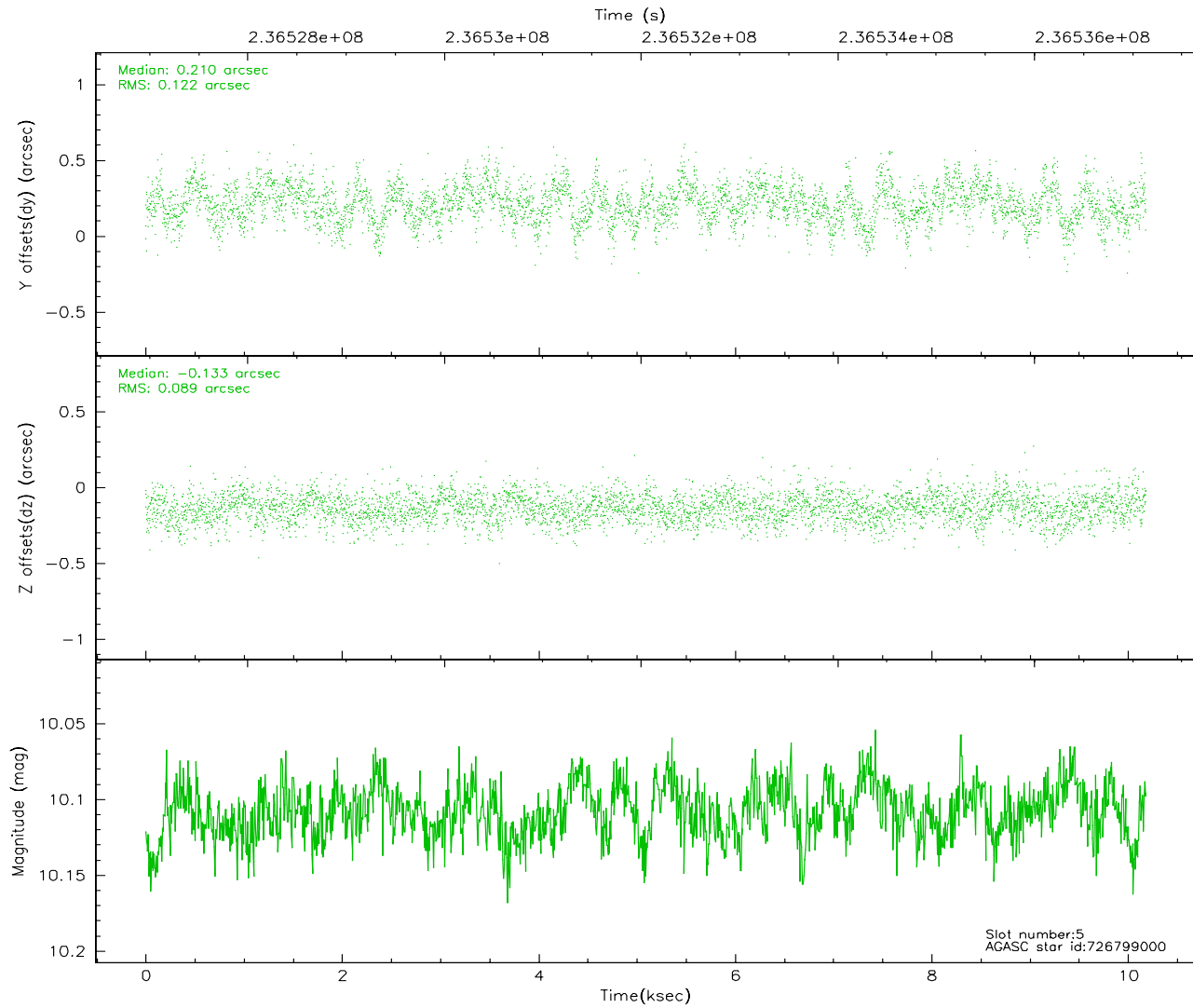
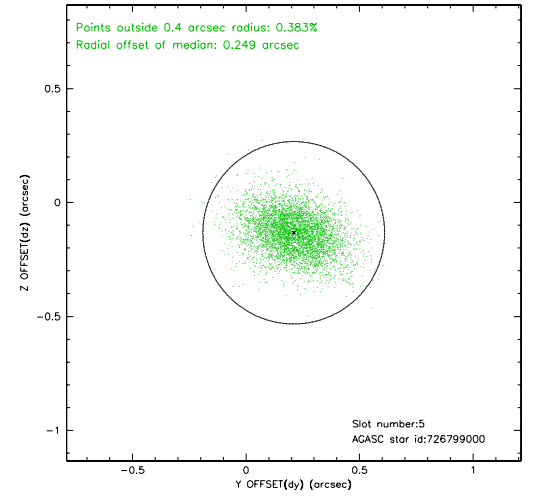
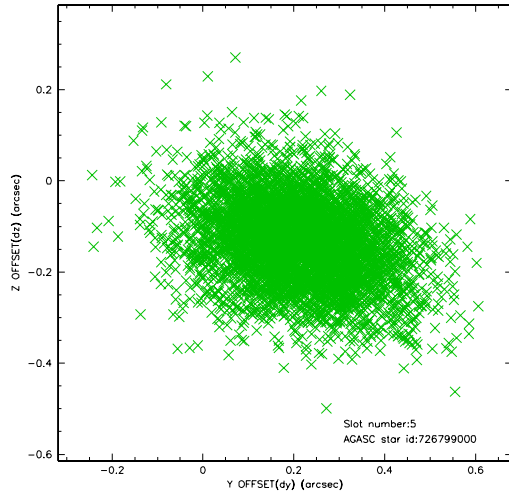
### 2.4.1 Slot 3



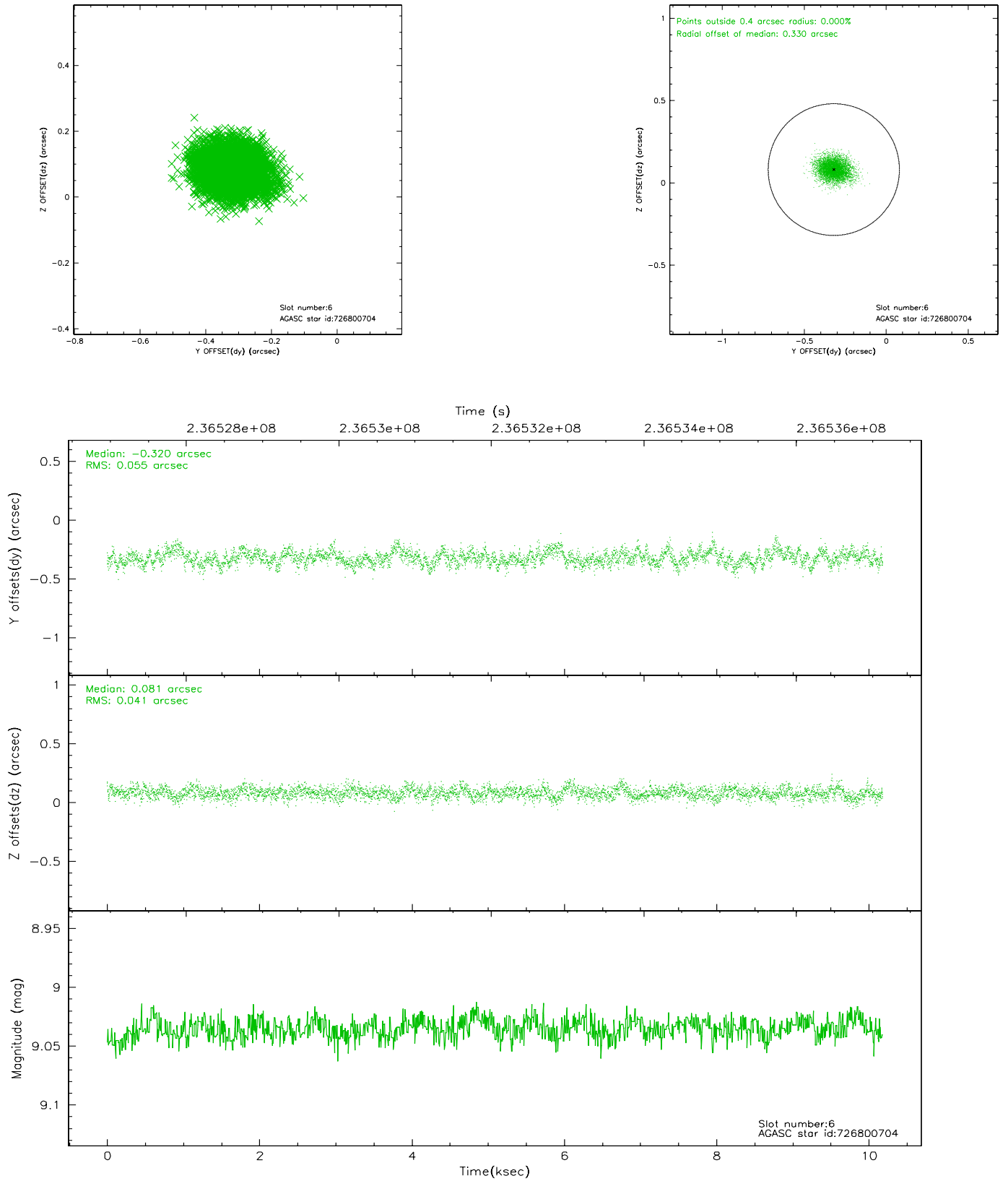
## 2.4.2 Slot 4



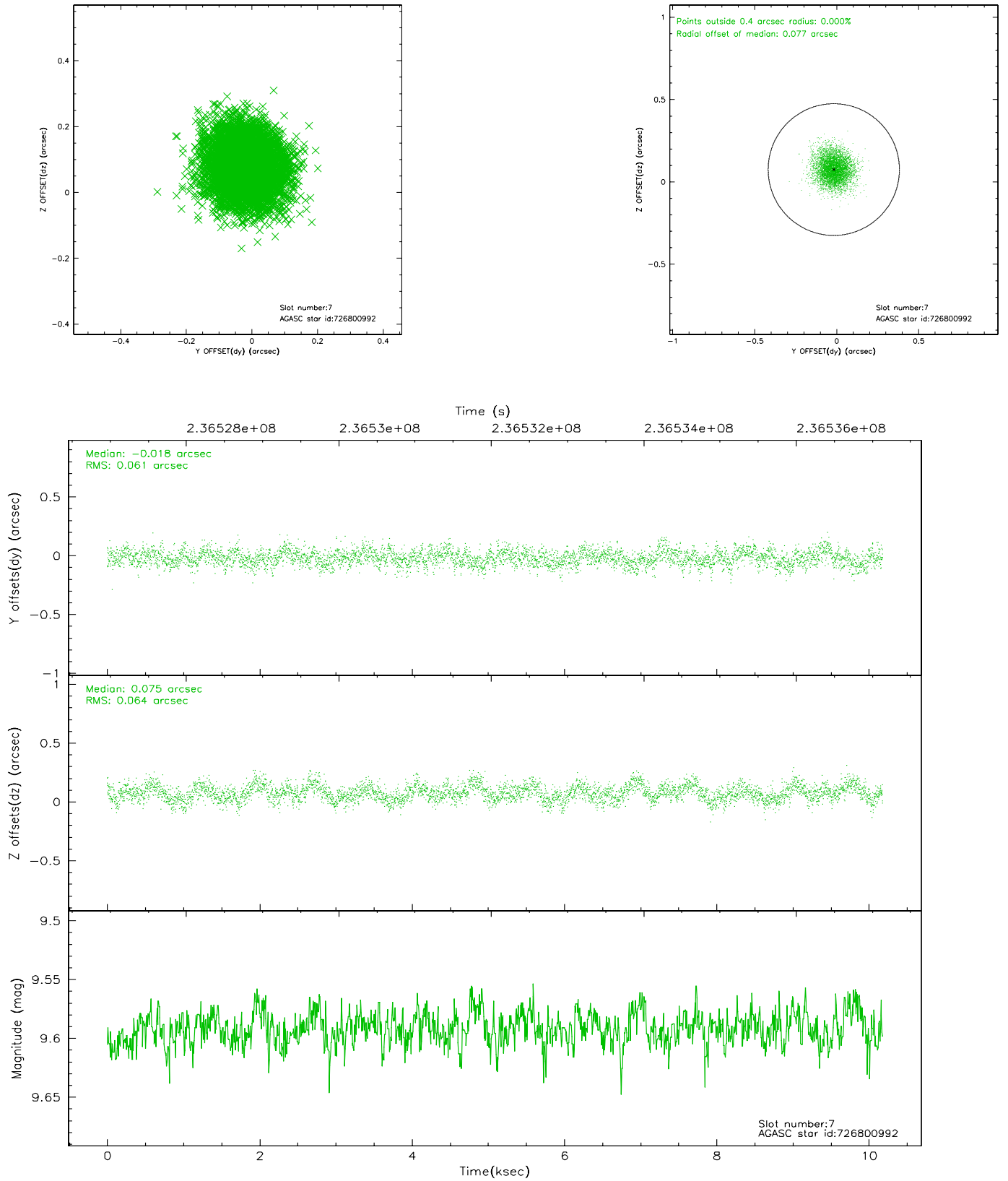
### 2.4.3 Slot 5



## 2.4.4 Slot 6

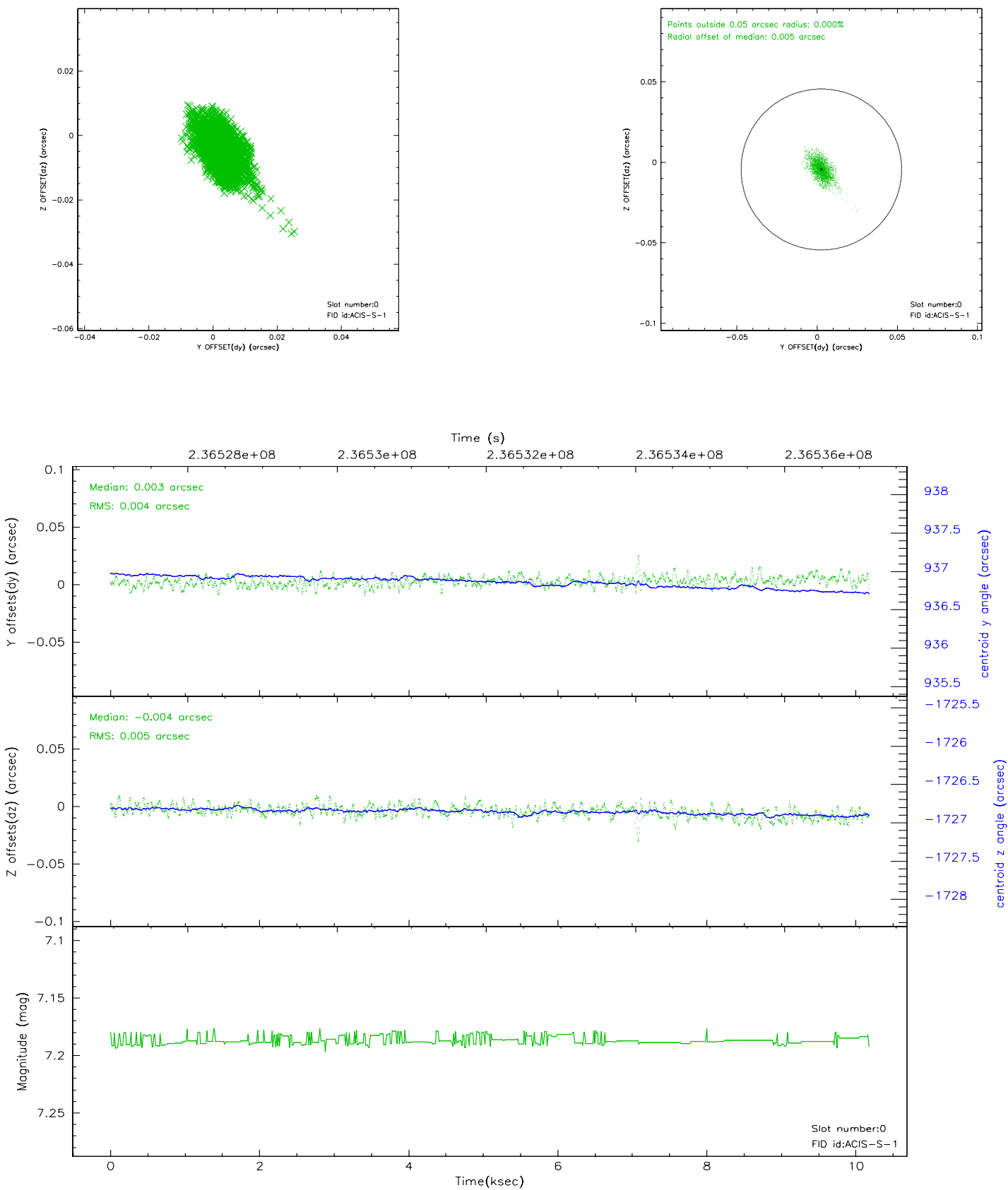


## 2.4.5 Slot 7

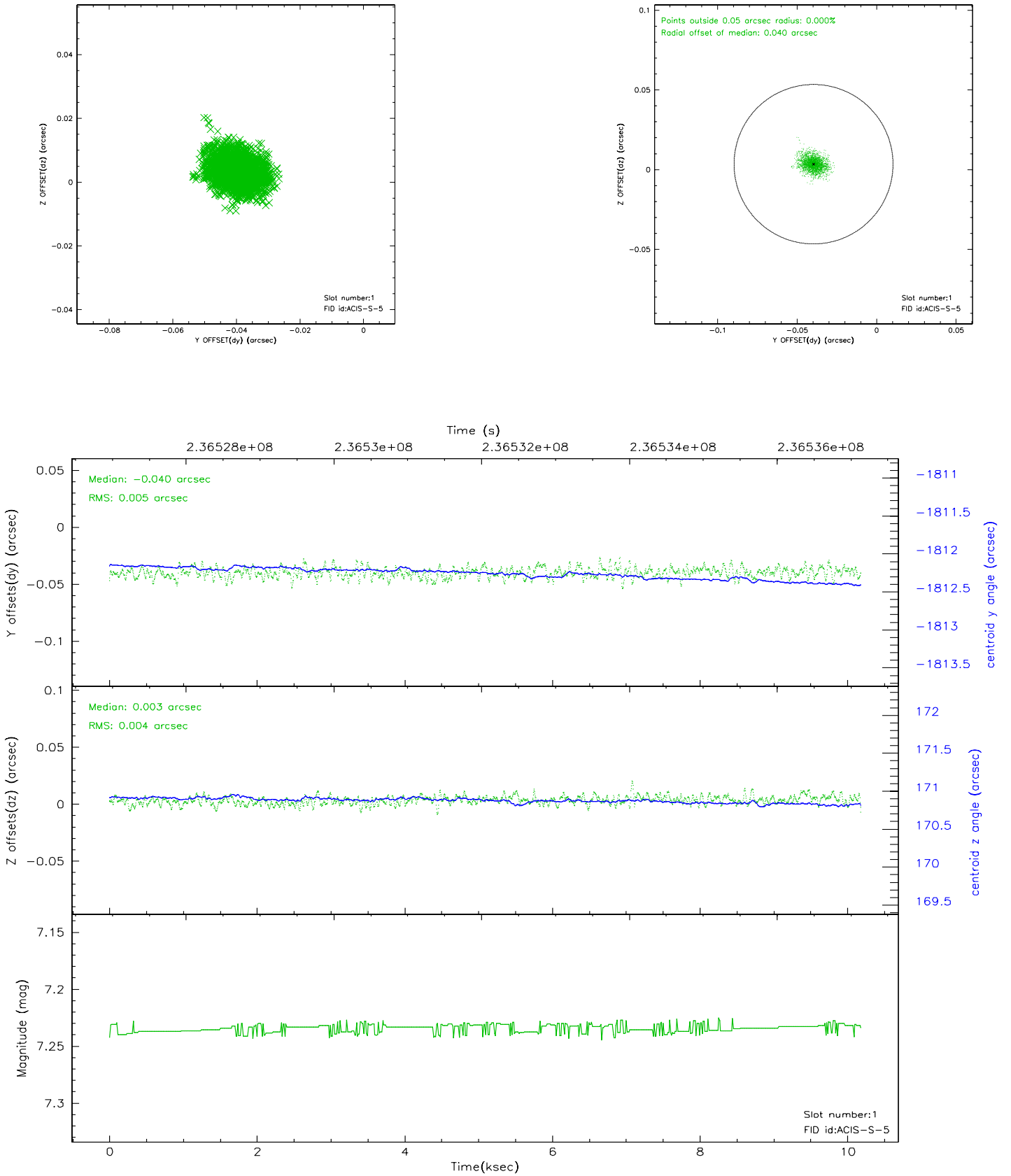


## 2.5 FID Slots

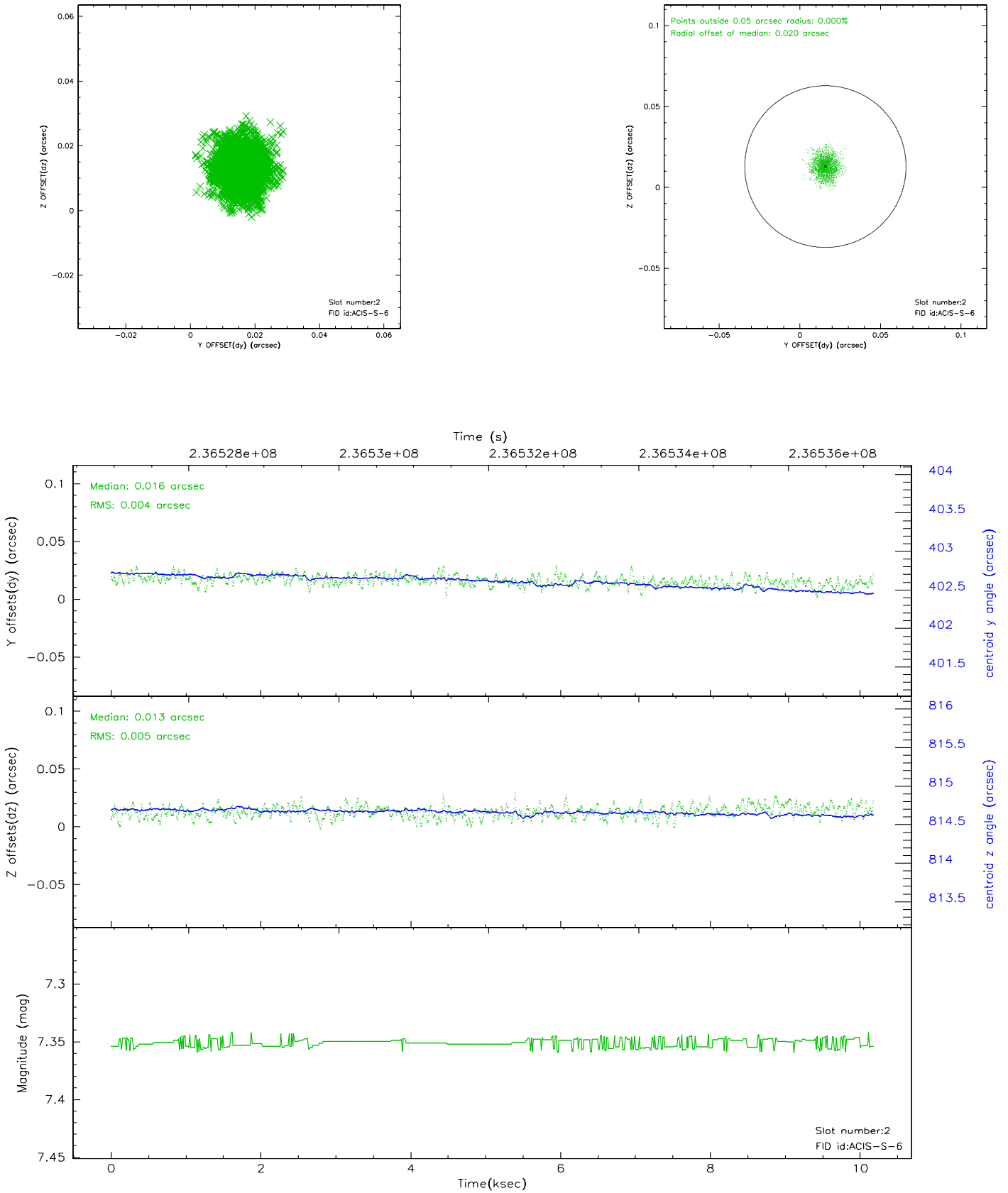
### 2.5.1 Slot 0



## 2.5.2 Slot 1

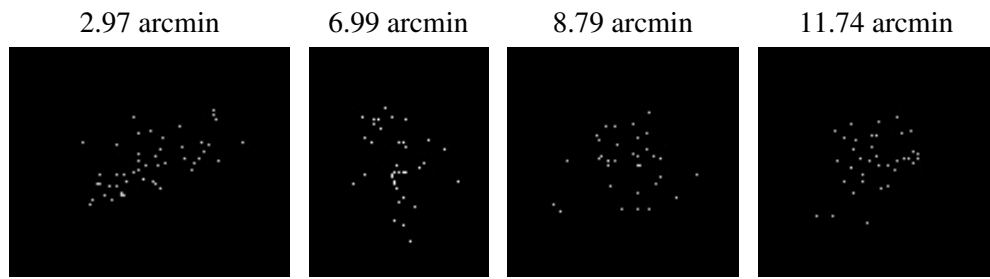


### 2.5.3 Slot 2





### 3 Point Sources



## A Summary

### A.1 Status

V&V Scientist	Beth Sundheim
V&V Date (YYYY-MM-DD)	2006.03.13
V&V Edition	1
V&V Disposition and Status	OK
V&V Charge Time	10.18239

### A.2 Comments

Focal plane temperature is elevated during initial ~3 ksec of observation.