

V&V Reference Report

L2 ASCDS Version : 8.5.1.1

Observation 6285 - L2 Version 3
Chandra X-Ray Center

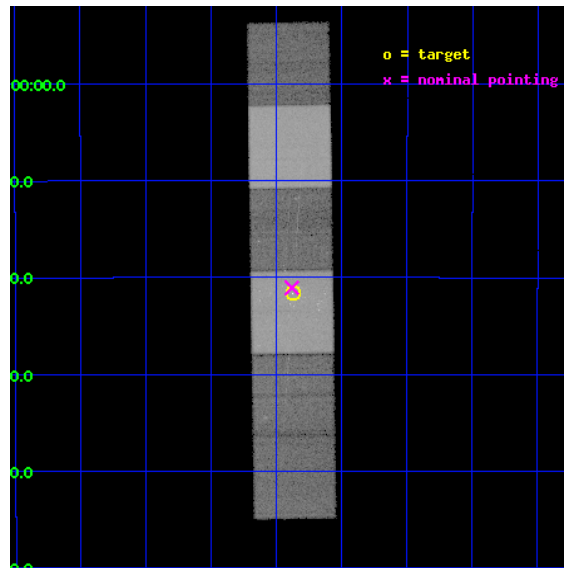
L2 Processing Date : Dec 24 2012

Contents

1	Front	2
2	OBI	3
2.1	OBI	3
2.1.1	Images	3
2.1.2	Bias	3
2.1.3	Parameters	4
2.1.4	Events	4
2.2	Compared Parameters	5
2.3	Aspect	6
2.4	Star Slots	9
2.4.1	Slot 3	9
2.4.2	Slot 4	10
2.4.3	Slot 5	11
2.4.4	Slot 6	12
2.4.5	Slot 7	13
2.5	FID Slots	14
2.5.1	Slot 0	14
2.5.2	Slot 1	15
2.5.3	Slot 2	16
3	Gratings	17
3.1	HEG Arm	17
3.2	MEG Arm	19
A	Summary	21
A.1	Status	21
A.2	Comments	21

1 Front

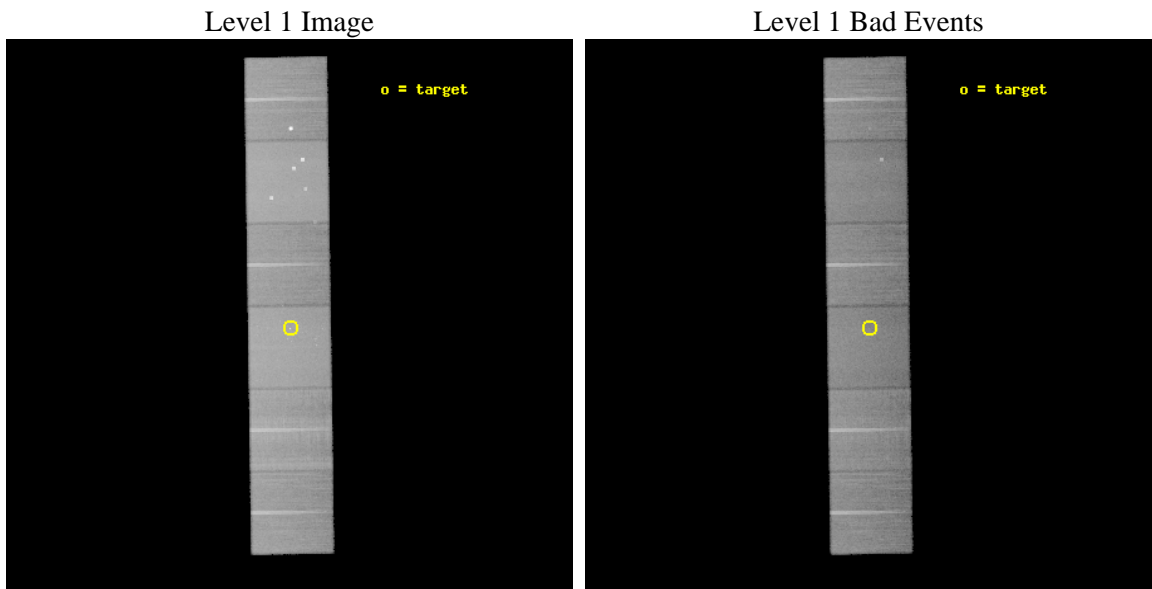
seq_num	200333	Sequence number
obs_id	6285	Observation id
title	A Chandra HETGS Survey of O-Stars	Proposal title
observer	Dr Wayne Waldron	Principal investigator
object	9 Sgr	Source name
dtcycle	0	
cycle	P	events from which exps? Prim/Second/Both
ra_targ	270.968333	Observer's specified target RA [deg]
dec_targ	-24.360722	Observer's specified target Dec [deg]
ra_nom	270.97034565668	Nominal RA [deg]
dec_nom	-24.351168687986	Nominal Dec [deg]
roll_nom	89.157456129285	Nominal Roll [deg]
revision	3	Processing version of data
ontime	45174.399831712	Sum of GTIs [s]
livetime	44602.374380285	Livetime [s]
ontime4	45174.399831712	Sum of GTIs [s]
ontime5	45174.399831712	Sum of GTIs [s]
ontime6	45174.399831712	Sum of GTIs [s]
ontime7	45174.399831712	Sum of GTIs [s]
ontime8	45174.399831712	Sum of GTIs [s]
ontime9	45174.399831712	Sum of GTIs [s]
l2events	577195	Number of level 2 events



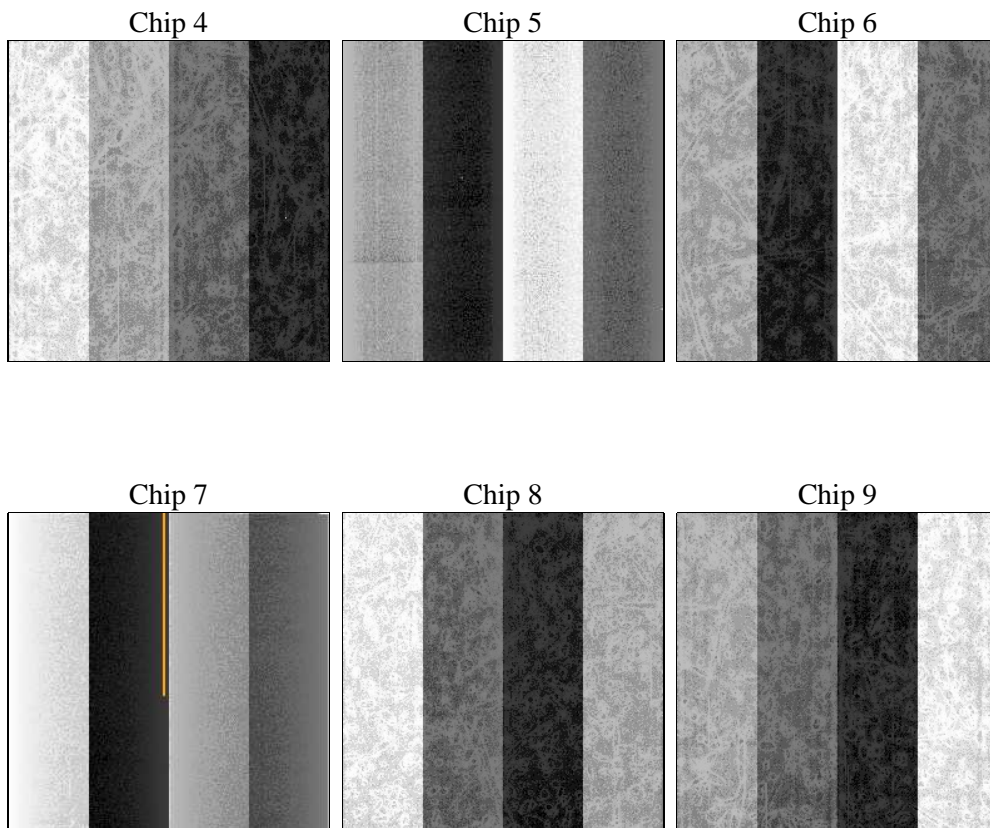
2 OBI

2.1 OBI

2.1.1 Images



2.1.2 Bias



2.1.3 Parameters

obi_num	0	Obi number	sched_exp_time	45000.000000	[s] Scheduled observation exposure time
ascdsver	8.5.1.1	Processing system revision	ontime	45174.399831712	Sum of GTIs [s]
caldsver	4.5.5	 	ontime4	45174.399831712	Sum of GTIs [s]
date	2012-12-24T16:12:31	Date and time of file creation	ontime5	45174.399831712	Sum of GTIs [s]
revision	3	Processing version of data	ontime6	45174.399831712	Sum of GTIs [s]
			ontime7	45174.399831712	Sum of GTIs [s]
			ontime8	45174.399831712	Sum of GTIs [s]
			ontime9	45174.399831712	Sum of GTIs [s]
			l1events	2584278	Number of level 1 events

2.1.4 Events

	ccd 4	ccd 5	ccd 6	ccd 7	ccd 8	ccd 9		ccd 4	ccd 5	ccd 6	ccd 7	ccd 8	ccd 9
level 1 events	402276	537574	356413	482476	451984	353555	grade 0 events	32820	31308	19047	18246	33196	18694
rejected events	345232	289716	311575	281782	353565	309648		8%	5%	5%	3%	7%	5%
rejected %	85%	53%	87%	58%	78%	87%	grade 1 events	438	1092	183	480	323	220
								0%	0%	0%	0%	0%	0%
							grade 2 events	9145	73191	9029	40725	21382	8673
								2%	13%	2%	8%	4%	2%
							grade 3 events	4497	9592	4305	18299	10549	4413
								1%	1%	1%	3%	2%	1%
							grade 4 events	4353	9459	4227	17775	9821	4190
								1%	1%	1%	3%	2%	1%
							grade 5 events	15998	38898	16149	45748	21533	17152
								3%	7%	4%	9%	4%	4%
							grade 6 events	6791	126837	8648	107670	24305	8378
								1%	23%	2%	22%	5%	2%
							grade 7 events	328234	247197	294825	233533	330875	291835
								81%	45%	82%	48%	73%	82%

2.2 Compared Parameters

Parameter	Planned	Actual	Parameter	Planned	Actual
Instrument	ACIS	ACIS	Obspar format version number	7	7
Detector	ACIS-456789	ACIS-456789	Obspar file type	PREDICTED	ACTUAL
Grating	HETG	HETG	Obspar update status	NONE	UPDATED
Data mode	FAINT	FAINT	Number of optional ACIS chips dropped	0	0
Observation mode	POINTING	POINTING	On-chip summing requested	N	N
[deg] Pointing RA	270.985268	270.9703456566837	Subarray requested	NONE	NONE
[deg] Pointing Dec	-24.374780	-24.35116868798636	Alternating exposures requested	N	N
[deg] Pointing Roll	89.006987	89.15745612928515	[s] Primary exposure time	0.000000	3.2
[mm] SIM focus pos	-0.684267	-0.6828225247311905			
[mm] SIM defocus	0	0.001444936568705701			
[mm] SIM translation stage pos	-190.132523	-190.1400660498719			
[mm] SIM translation stage offset	0	0.00754346686406393			
[s] Observation start time (MET)	234705433.184000	234704083.79957			
Observation start date	2005-06-09T11:56:09	2005-06-09T11:34:43			
[s] Observation end time (MET)	234750433.184000	234750990.36421			
Observation end date	2005-06-10T00:26:09	2005-06-10T00:36:30			
Read mode	TIMED	TIMED			

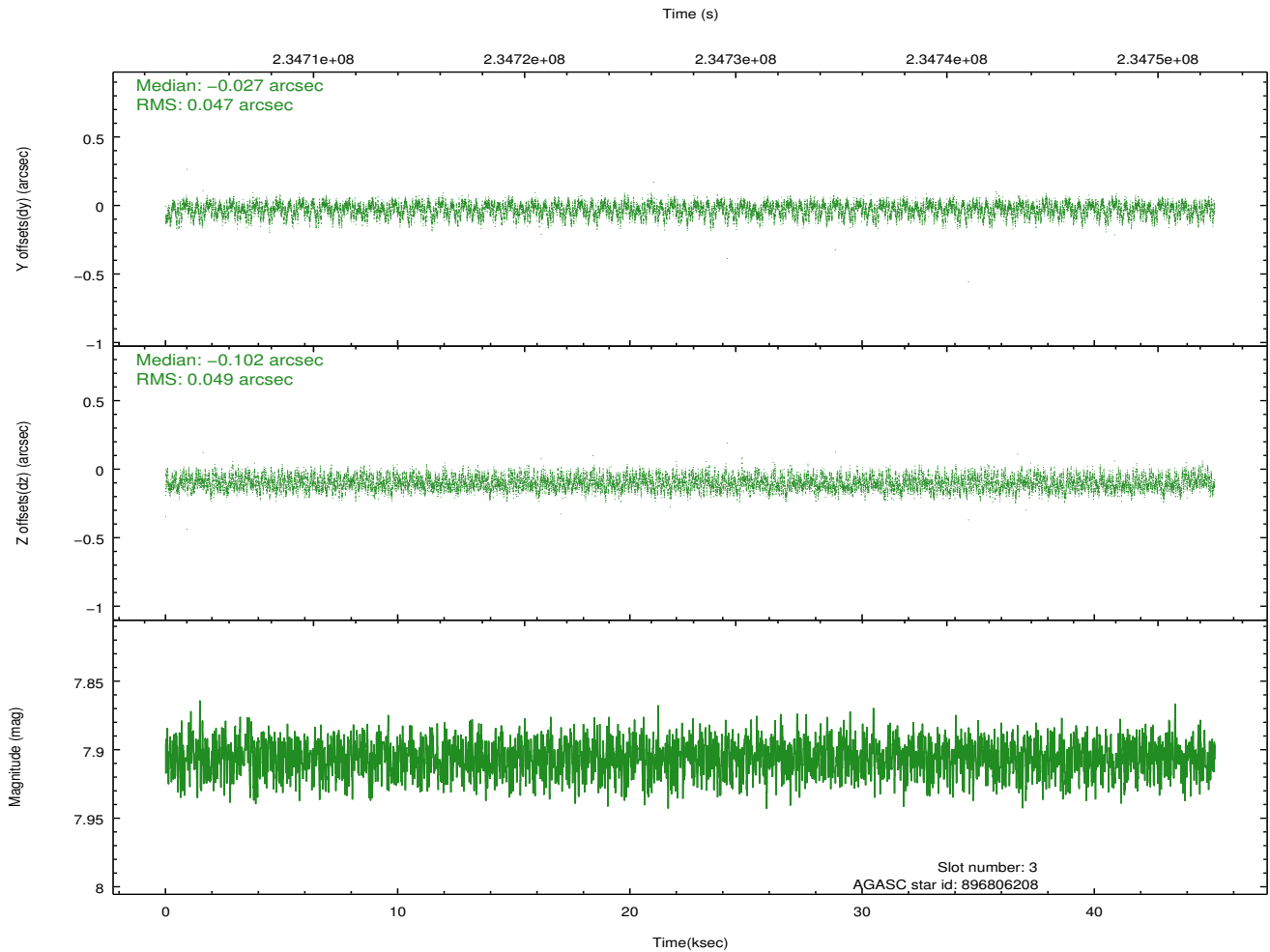
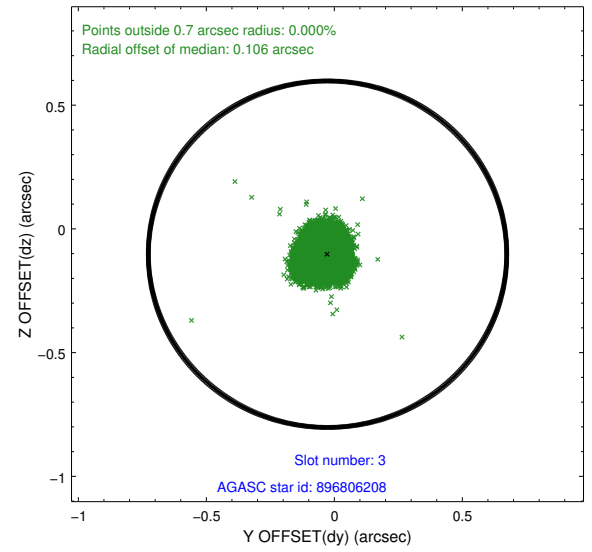
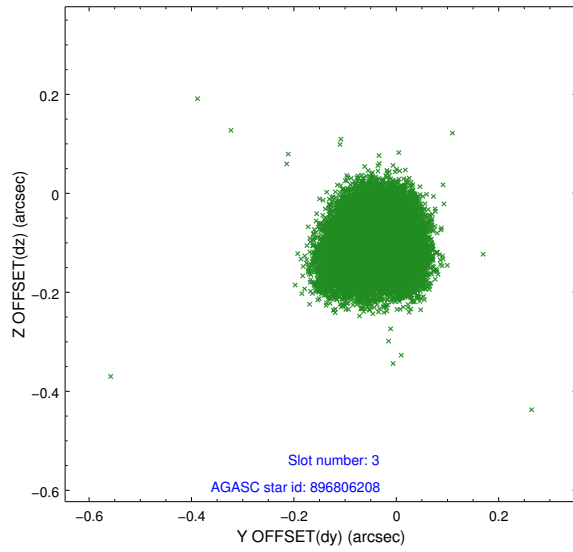
2.3 Aspect

Slot Statistics

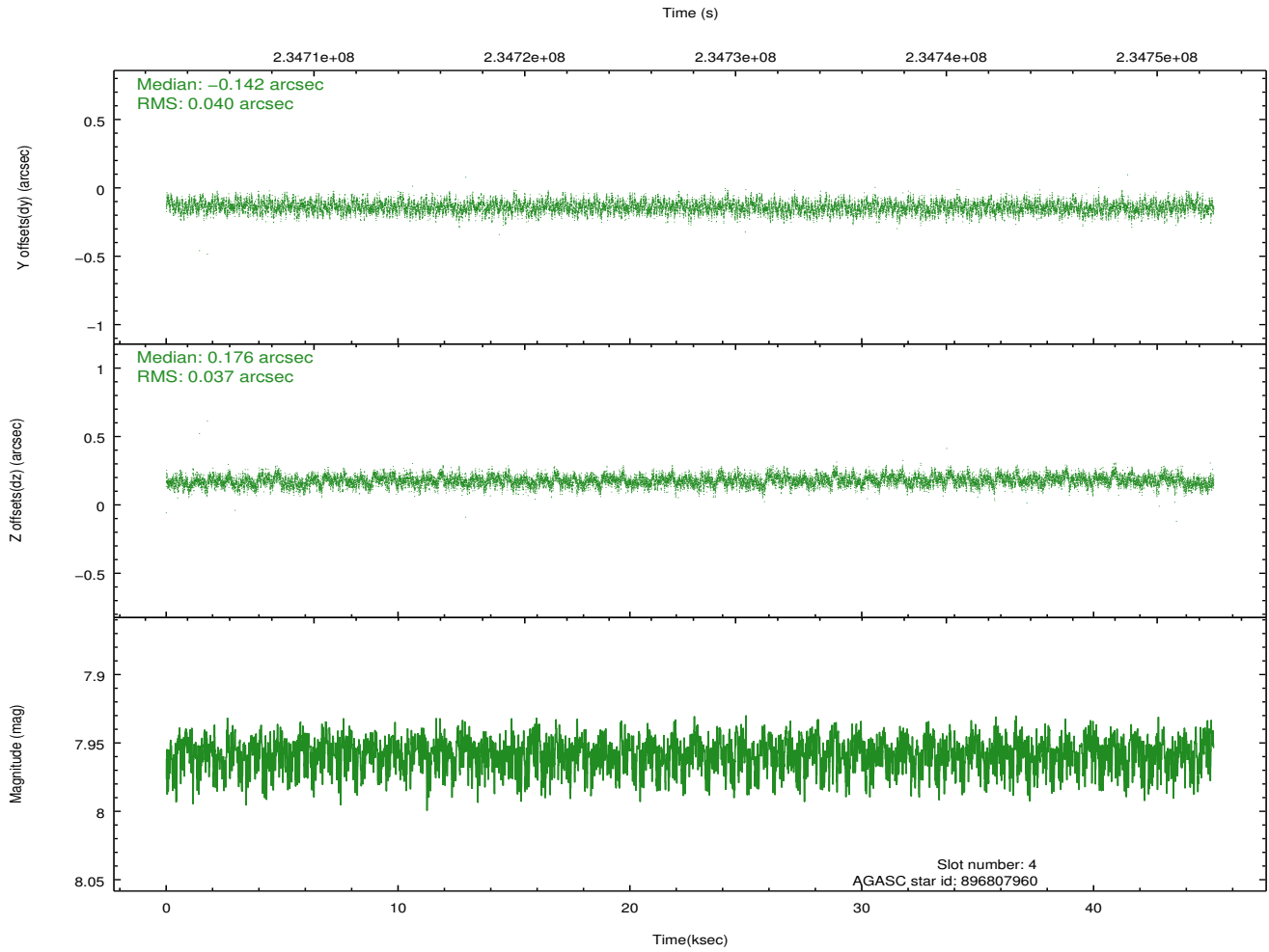
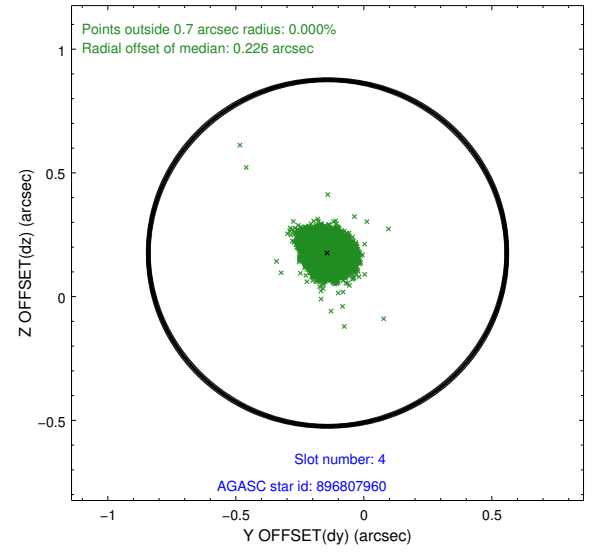
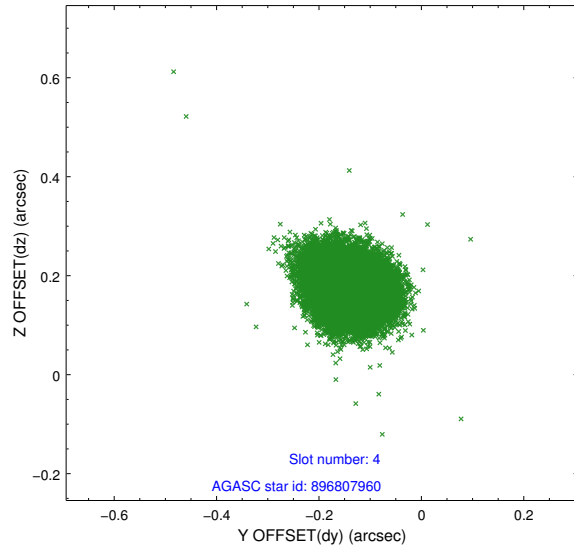
slot	status	id	mag	n_pts	med_dy	med_dz	dr1	dr2	ra	dec	mean_y	mean_z
0	FID	ACIS-S-2	7.10	11020	-0.050	-0.040	0.013	0.025	0.000000	0.000000	-759.62	-1730.79
1	FID	ACIS-S-4	7.21	11020	0.091	0.034	0.007	0.014	0.000000	0.000000	2153.78	177.81
2	FID	ACIS-S-5	7.23	11019	-0.073	0.015	0.012	0.024	0.000000	0.000000	-1812.52	171.40
3	GUIDE	896806208	7.91	22035	-0.027	-0.102	0.073	0.113	270.466849	-24.367317	-6.02	1700.20
4	GUIDE	896807960	7.96	22037	-0.142	0.176	0.058	0.094	271.641091	-23.945331	1578.62	-2130.22
5	GUIDE	897319440	7.77	22038	0.019	0.070	0.055	0.090	271.242462	-24.680808	-1087.29	-860.50
6	GUIDE	897327936	7.21	22041	0.139	-0.033	0.072	0.111	271.293962	-24.398569	-68.73	-1013.45
7	GUIDE	896809544	8.95	22024	0.007	-0.115	0.101	0.155	270.254038	-24.153966	746.69	2415.27

2.4 Star Slots

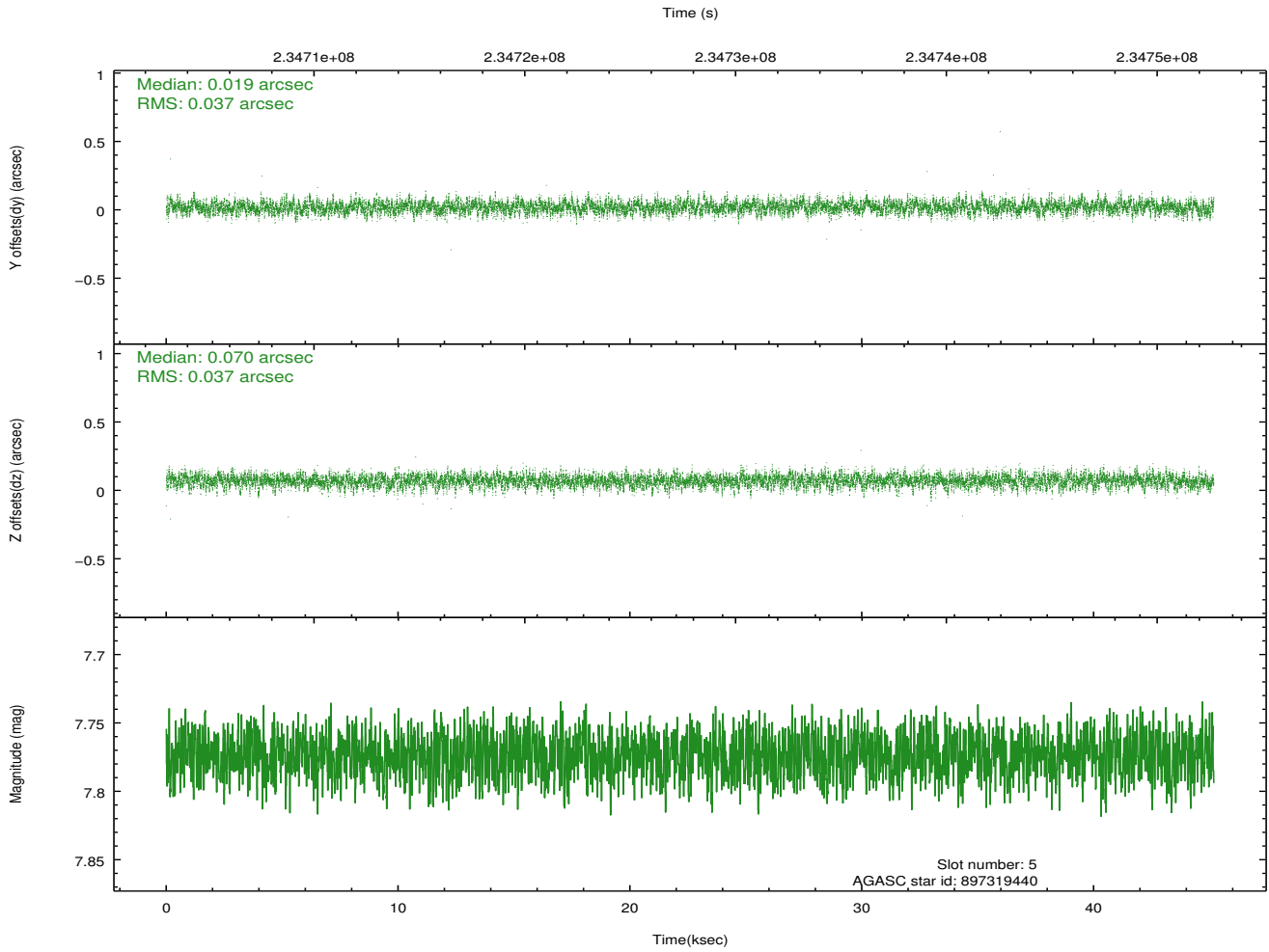
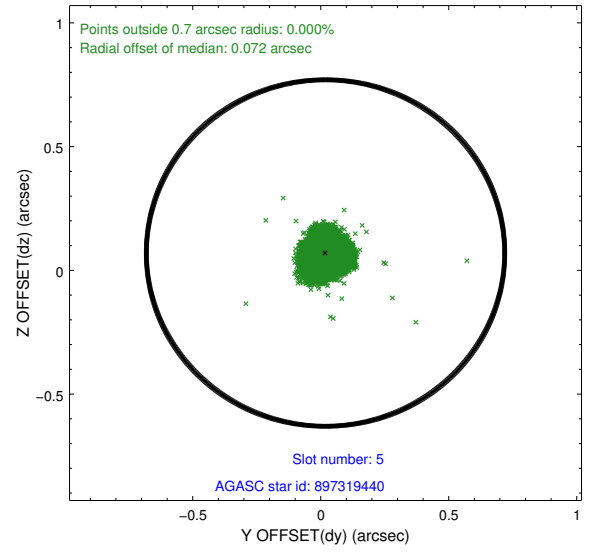
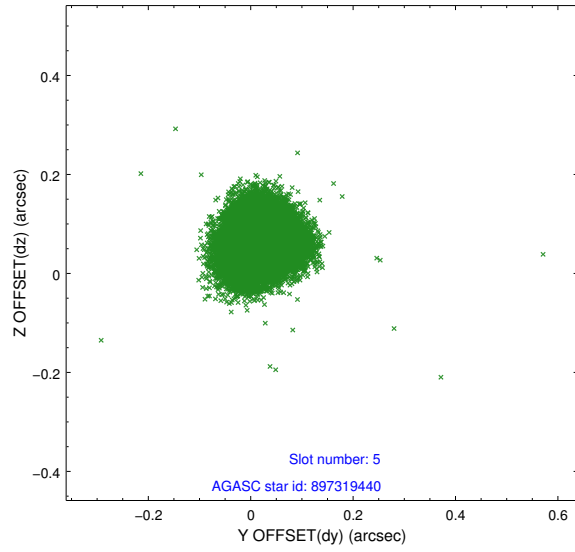
2.4.1 Slot 3



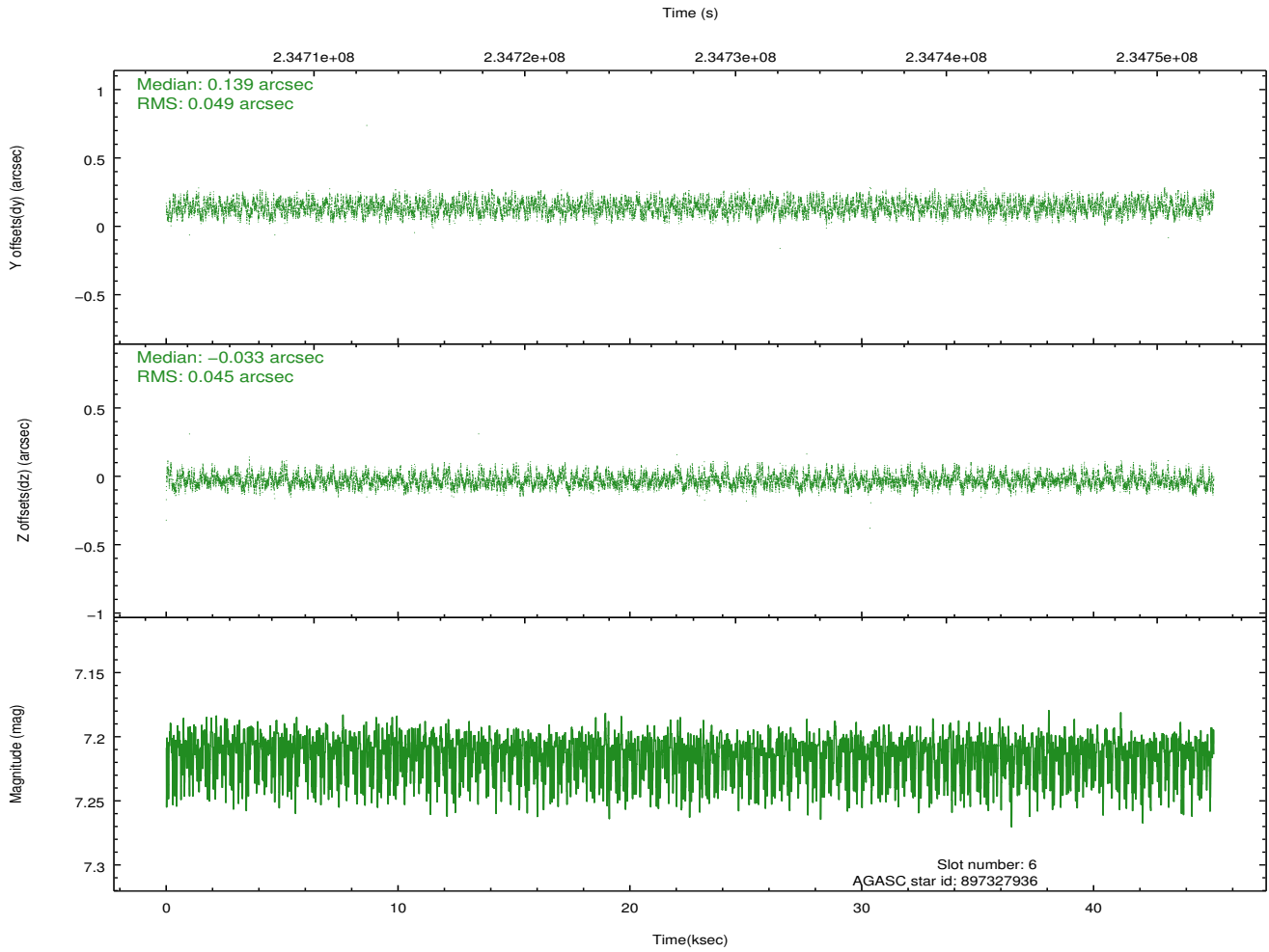
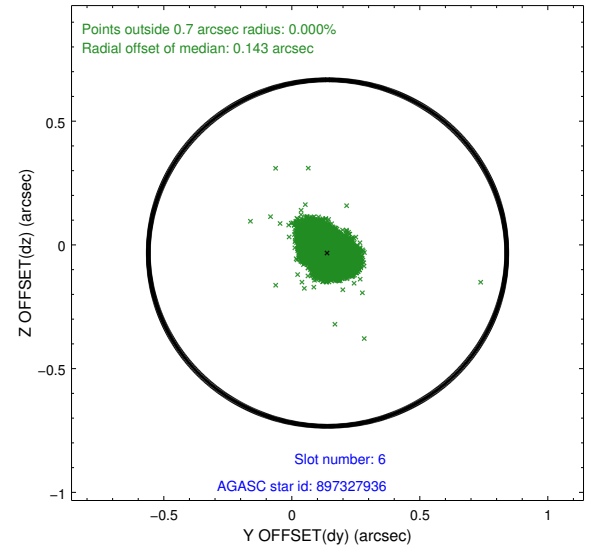
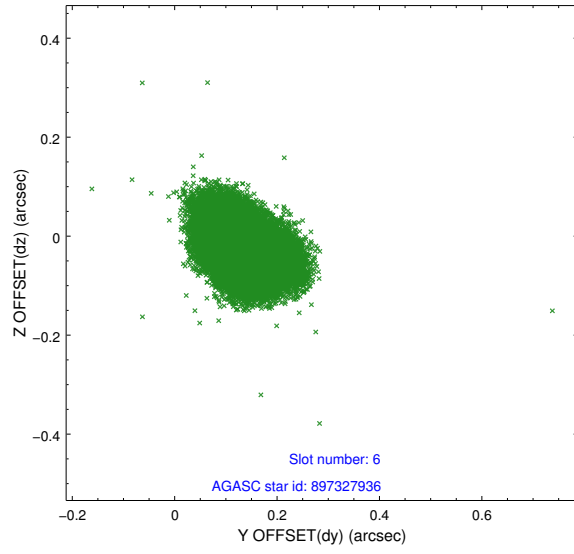
2.4.2 Slot 4



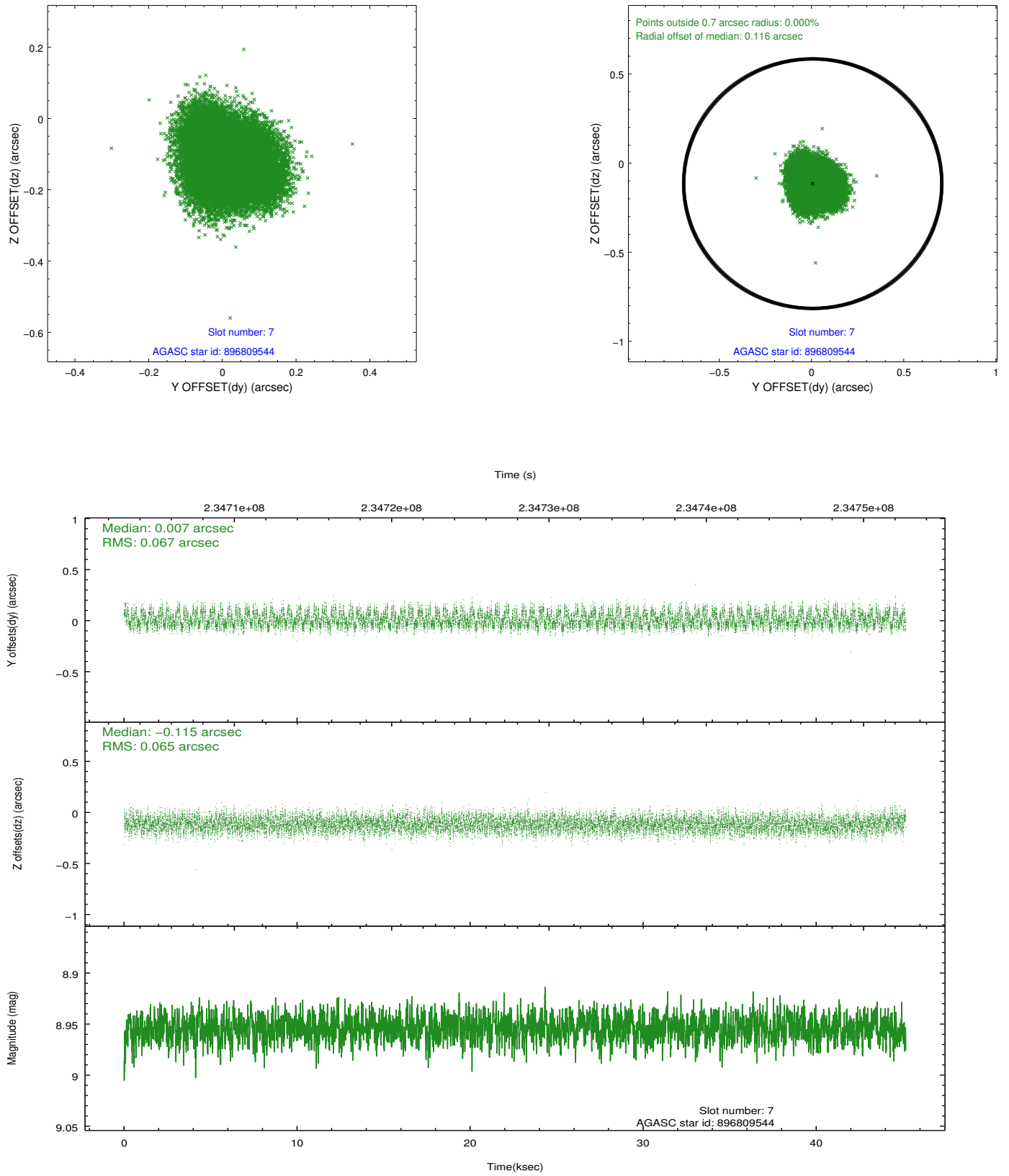
2.4.3 Slot 5



2.4.4 Slot 6

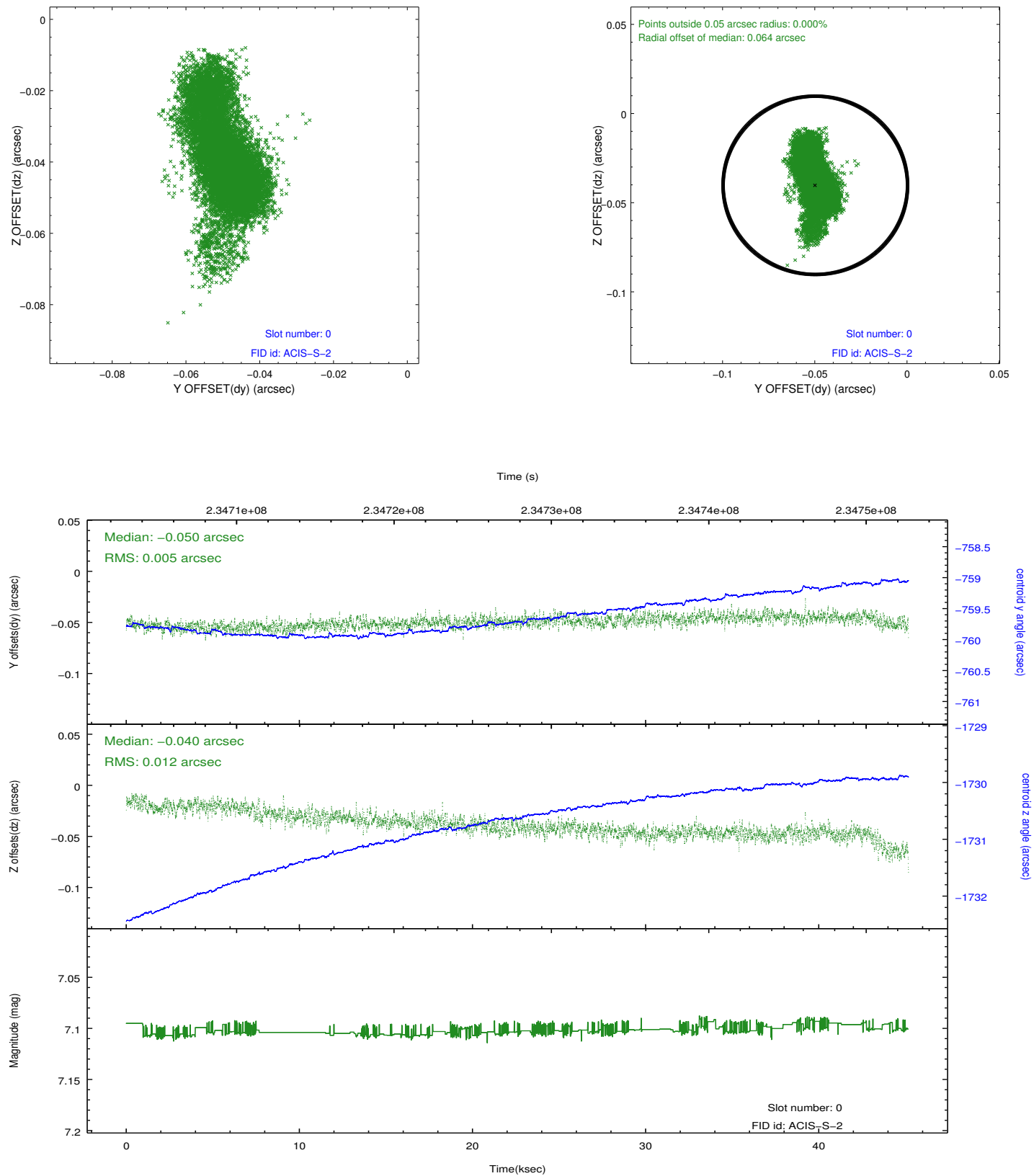


2.4.5 Slot 7

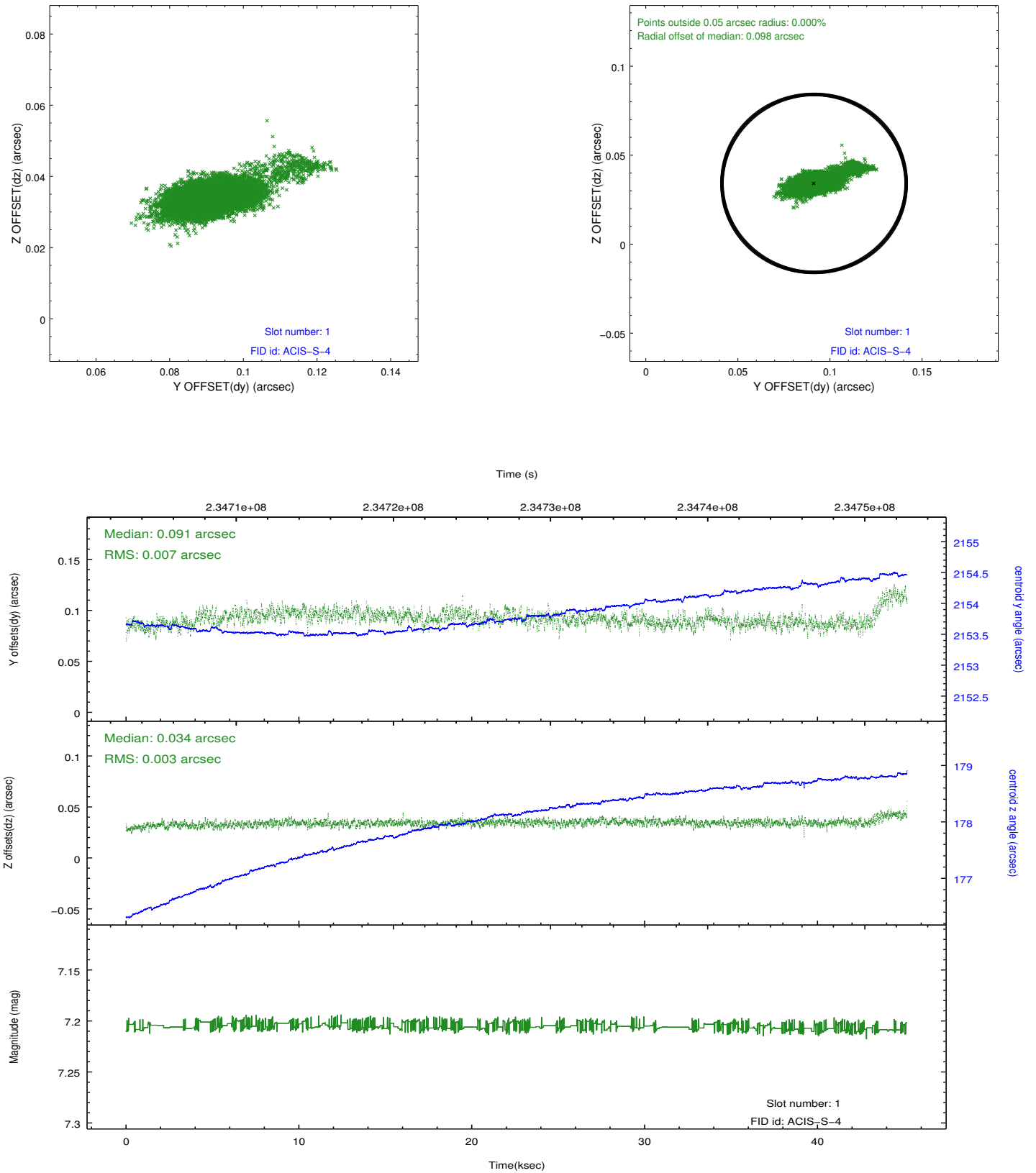


2.5 FID Slots

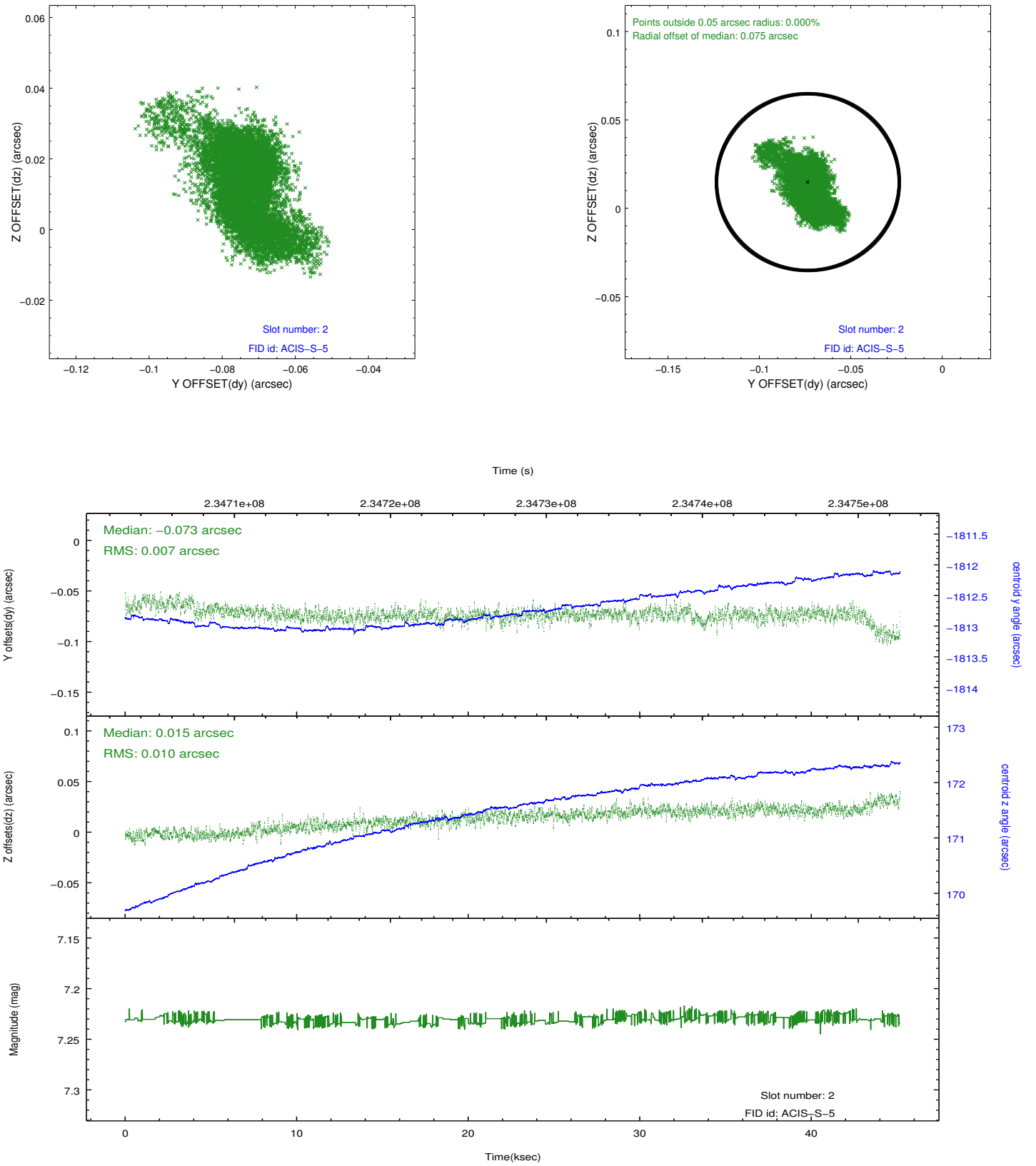
2.5.1 Slot 0



2.5.2 Slot 1



2.5.3 Slot 2

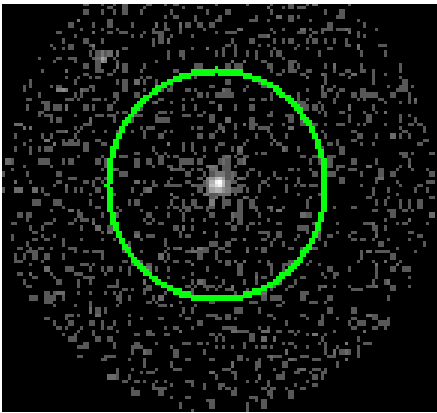


3 Gratings

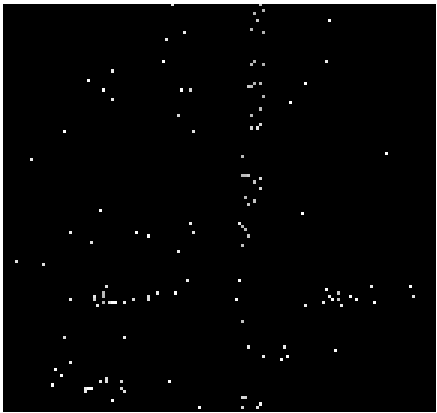
3.1 HEG Arm



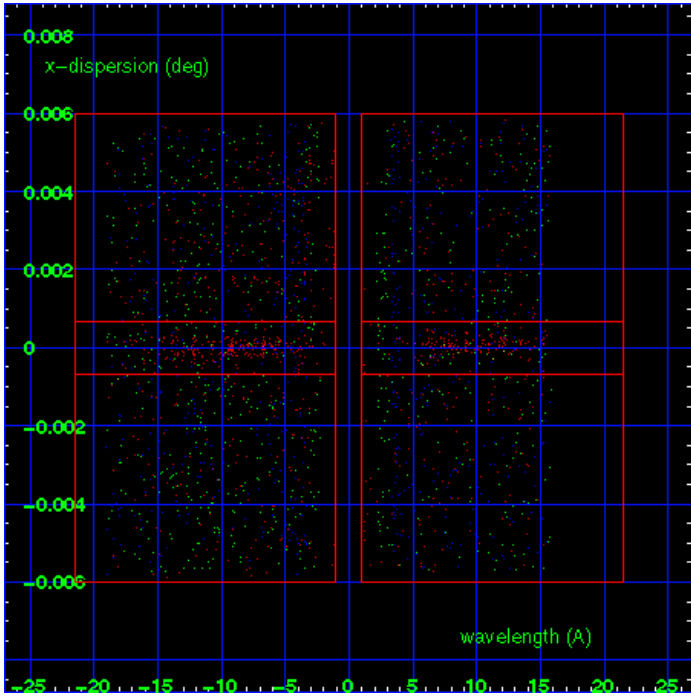
HEG Order Sort 123



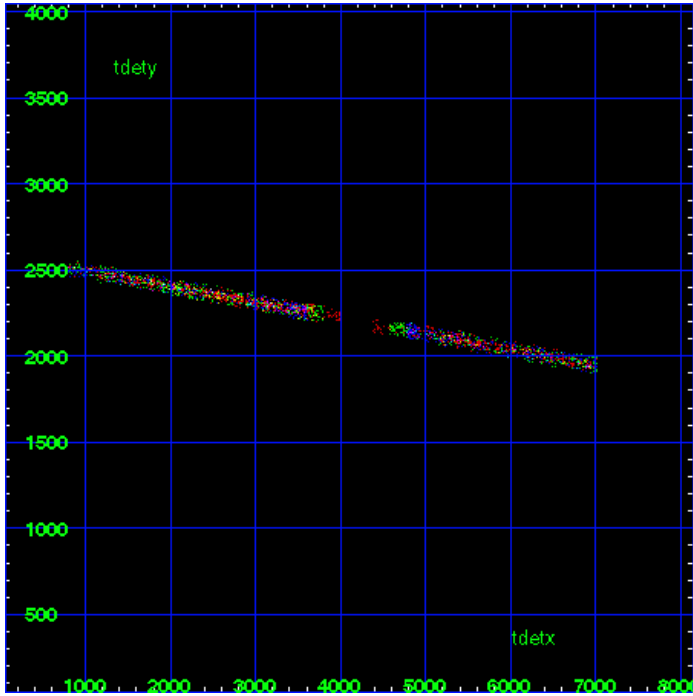
HEG Zero Order



HEG Order Sort ALL

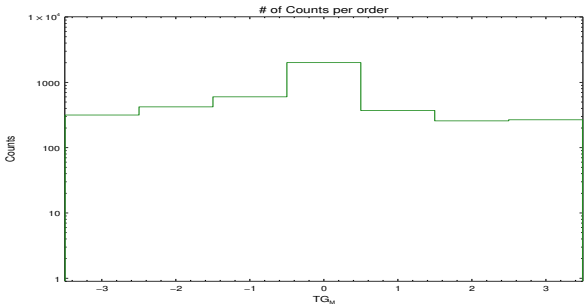


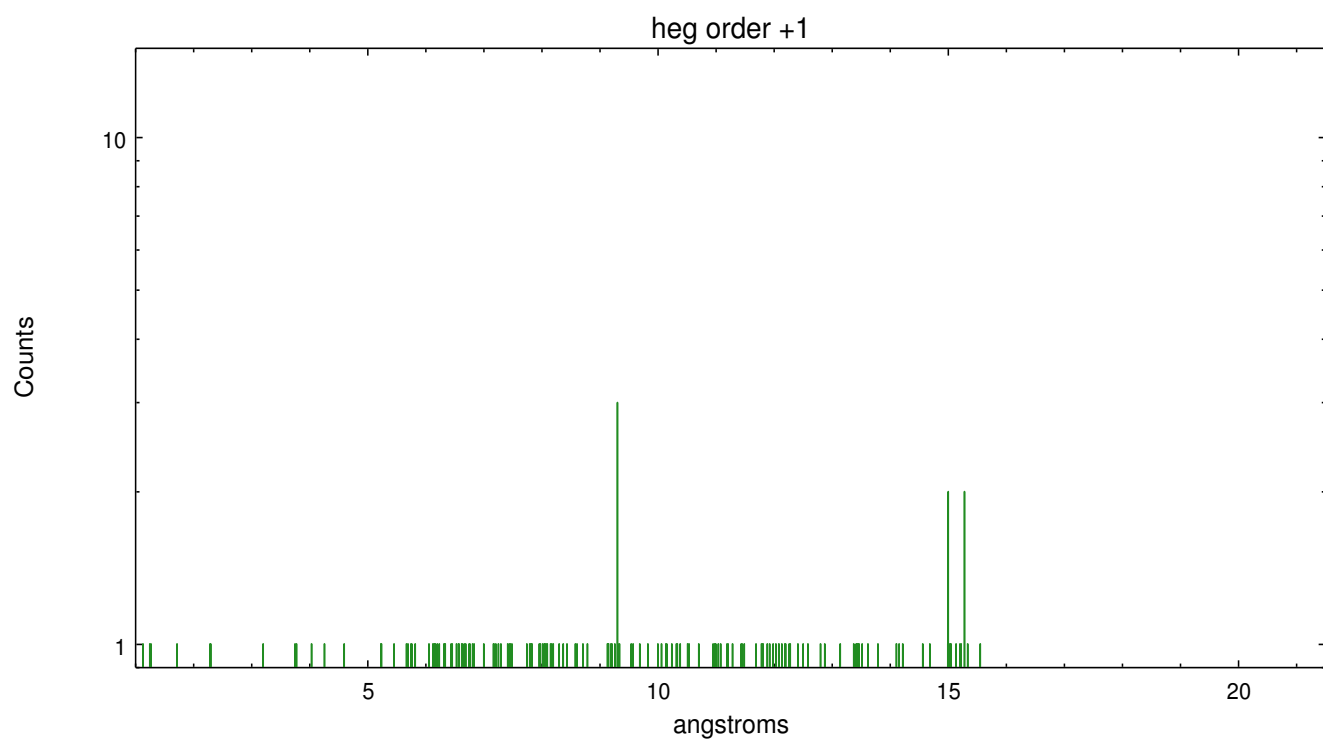
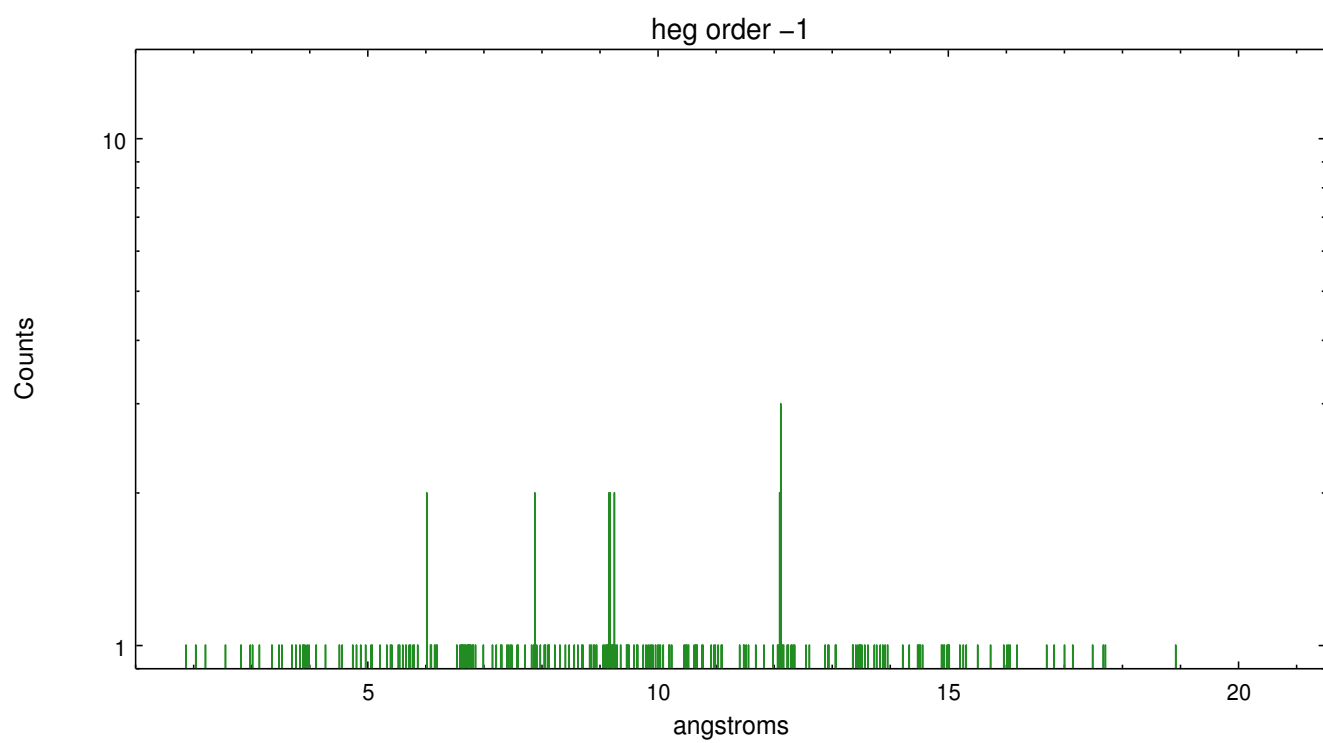
Spot Image HEG



Full Detector HEG

	order -3	order -2	order -1	order 0	order 1	order 2	order 3
Events	317	423	603	2019	372	258	268

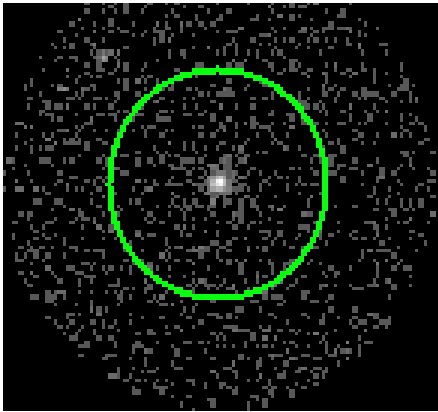




3.2 MEG Arm



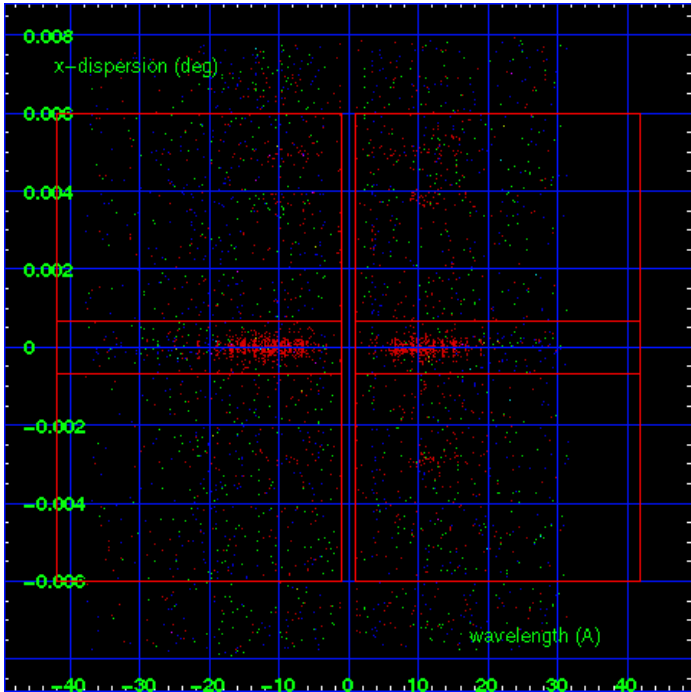
MEG Order Sort 123



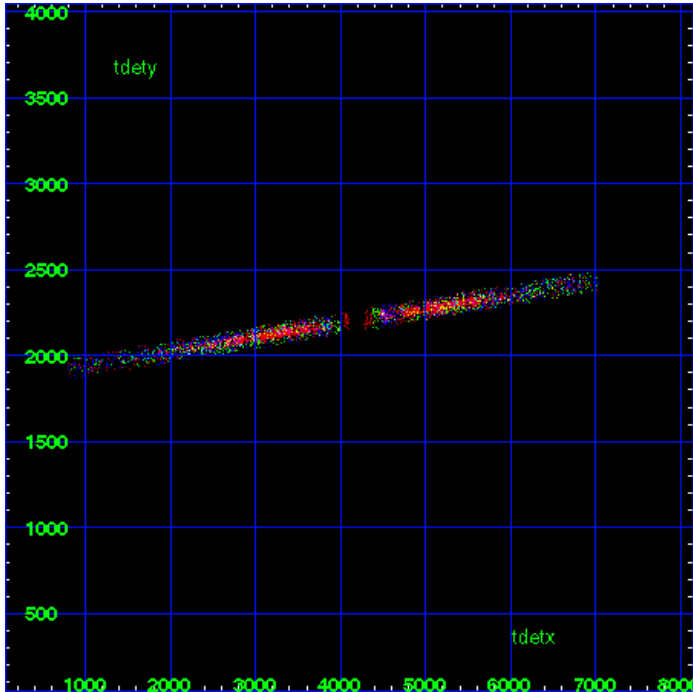
MEG Zero Order



MEG Order Sort ALL

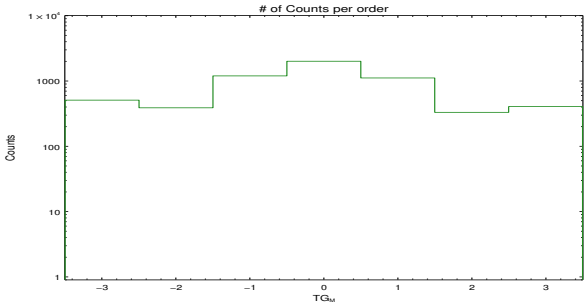


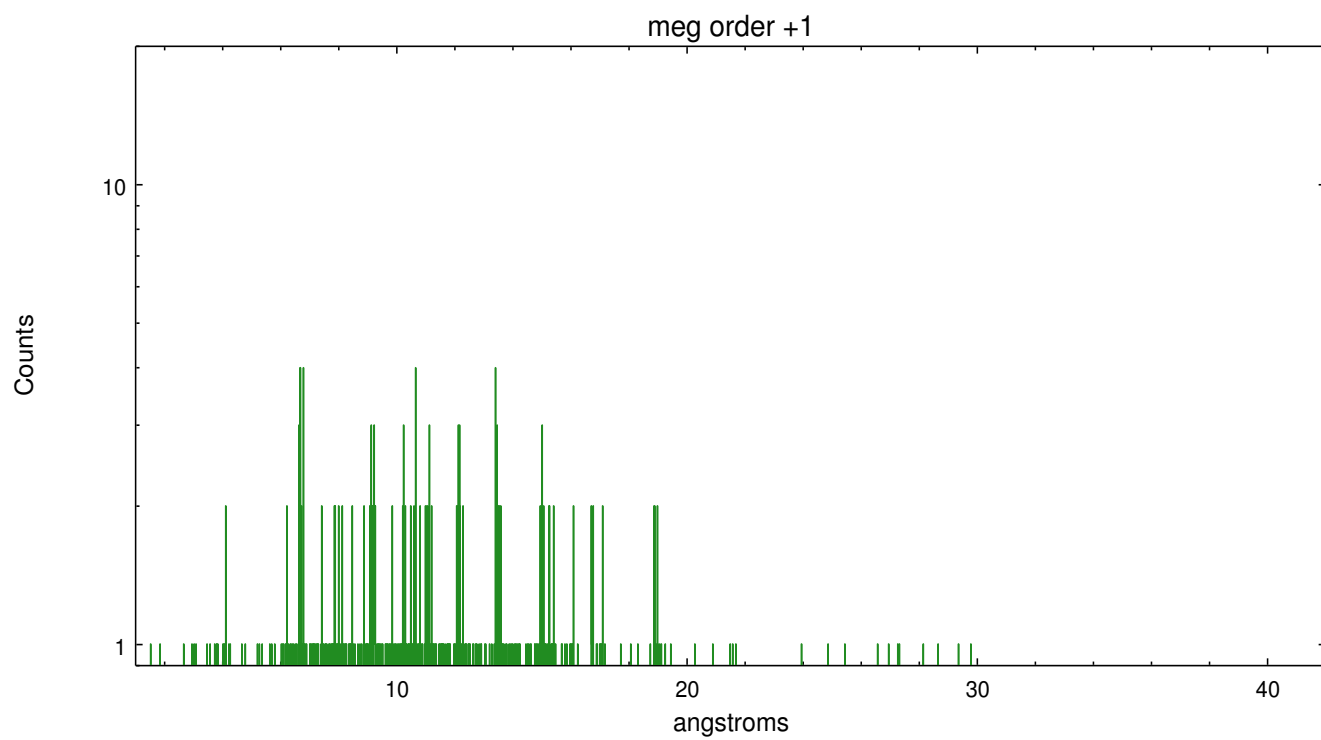
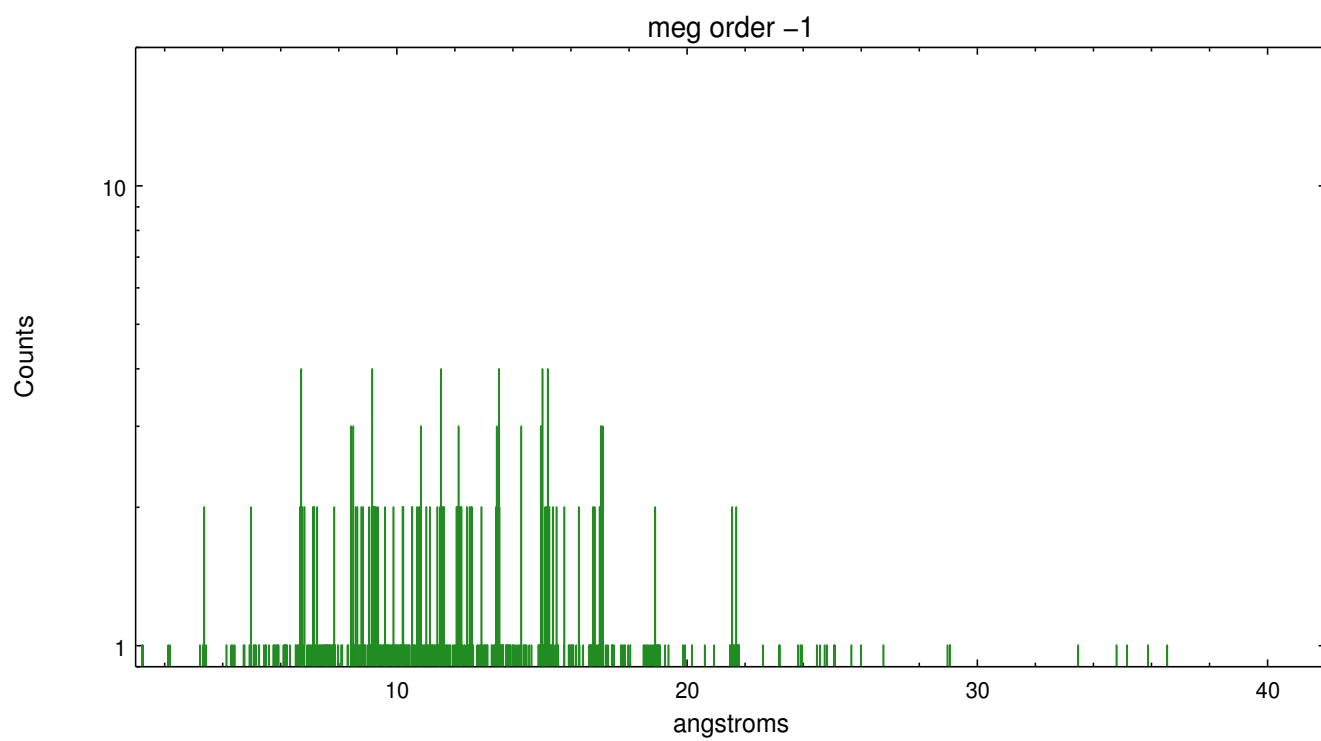
Spot Image MEG



Full Detector MEG

	order -3	order -2	order -1	order 0	order 1	order 2	order 3
Events	511	390	1204	2019	1119	332	407





A Summary

A.1 Status

V&V Scientist	Joy Nichols
V&V Date (YYYY-MM-DD)	2013.01.18
V&V Edition	1
V&V Disposition and Status	OK
V&V Charge Time	45.17439

A.2 Comments

Warning: Multiple sources in the field may cause contamination of the primary extraction at some wavelengths. Extraction is of 9 Sgr. XMMU J180351.3-241149 is partially within the background region on the MEG minus arm at about 12-13A. The background may be contaminated in this region.