

# V&V Reference Report

## L2 ASCDS Version : 8.5.1.1

Observation 62675 - L2 Version 1  
Chandra X-Ray Center

L2 Processing Date : Mar 19 2013

## Contents

<b>1</b>	<b>Front</b>	<b>2</b>
<b>2</b>	<b>OBI</b>	<b>3</b>
2.1	OBI . . . . .	3
2.1.1	Images . . . . .	3
2.1.2	Bias . . . . .	3
2.1.3	Parameters . . . . .	4
2.1.4	Events . . . . .	4
2.2	Compared Parameters . . . . .	5
2.3	Star Slots . . . . .	6
2.4	FID Slots . . . . .	6
<b>A</b>	<b>Summary</b>	<b>7</b>
A.1	Status . . . . .	7
A.2	Comments . . . . .	7

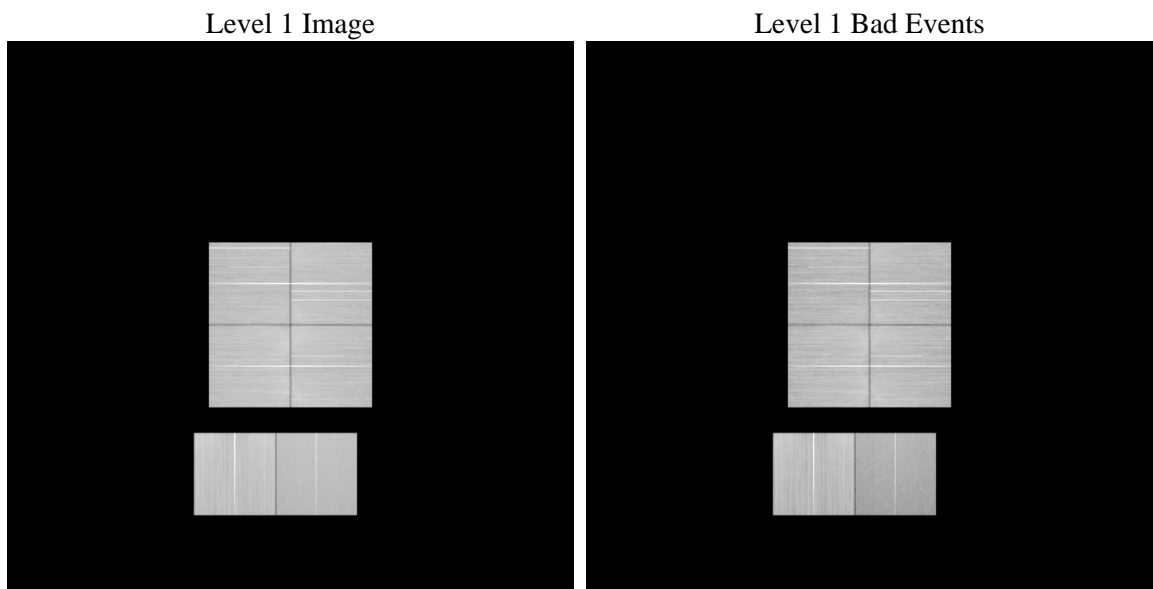
# 1 Front

seq_num	&#160	Sequence number
obs_id	62675	Observation id
title	ACIS-012367 diagnostics	Proposal title
observer	CHANDRA engineering request/realtime commanding	Principal investig
object	&#160	Source name
dtcycle	0	&#160
cycle	P	events from which exps? Prim/Second/Both
ra_targ	0.0	Observer's specified target RA [deg]
dec_targ	0.0	Observer's specified target Dec [deg]
ra_nom	167.40003269014	Nominal RA [deg]
dec_nom	9.4338346639748	Nominal Dec [deg]
roll_nom	176.80496832434	Nominal Roll [deg]
revision	1	Processing version of data
ontime	80082.795918167	Sum of GTIs [s]
livetime	79068.73933618	Livetime [s]
ontime0	80083.085705996	Sum of GTIs [s]
ontime1	80083.044665992	Sum of GTIs [s]
ontime2	80079.76261574	Sum of GTIs [s]
ontime3	80082.795918167	Sum of GTIs [s]
ontime6	80082.962585986	Sum of GTIs [s]
ontime7	80082.795918167	Sum of GTIs [s]
l2events	2071341	Number of level 2 events

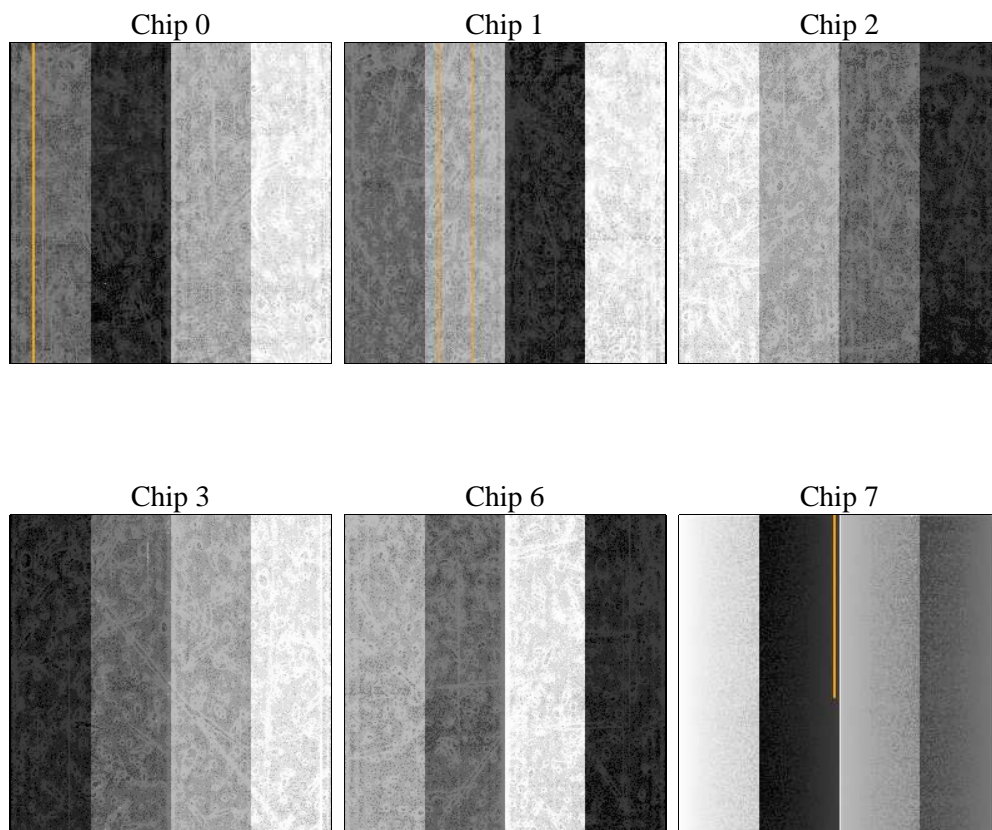
## 2 OBI

### 2.1 OBI

#### 2.1.1 Images



#### 2.1.2 Bias



### 2.1.3 Parameters

obi_num	0	Obi number	sched_exp_time	0.0	[s] Scheduled observation exposure time
ascdsver	8.5.1.1	Processing system revision	ontime	80082.795918167	Sum of GTIs [s]
caldsver	4.5.6	&#160	ontime0	80083.085705996	Sum of GTIs [s]
date	2013-03-19T23:12:21	Date and time of file creation	ontime1	80083.044665992	Sum of GTIs [s]
revision	1	Processing version of data	ontime2	80079.76261574	Sum of GTIs [s]
			ontime3	80082.795918167	Sum of GTIs [s]
			ontime6	80082.962585986	Sum of GTIs [s]
			ontime7	80082.795918167	Sum of GTIs [s]
			l1events	8739185	Number of level 1 events

### 2.1.4 Events

	ccd 0	ccd 1	ccd 2	ccd 3	ccd 6	ccd 7		ccd 0	ccd 1	ccd 2	ccd 3	ccd 6	ccd 7
level 1 events	1415540	1510405	1566383	1522430	1531796	1192631	grade 0 events	164265	160876	170366	169578	168657	8548
rejected events	1094748	1187490	1242170	1199109	1195524	626998		11%	10%	10%	11%	11%	7%
rejected %	77%	78%	79%	78%	78%	52%	grade 1 events	873	781	971	946	796	849
								0%	0%	0%	0%	0%	0%
							grade 2 events	63037	66378	61440	61070	66897	1383
								4%	4%	3%	4%	4%	11%
							grade 3 events	21941	21477	22138	22189	21884	4697
								1%	1%	1%	1%	1%	3%
							grade 4 events	21160	21660	22148	22199	21718	4667
								1%	1%	1%	1%	1%	3%
							grade 5 events	26709	27277	25448	29693	28911	7093
								1%	1%	1%	1%	1%	5%
							grade 6 events	50395	52539	48135	48285	57134	2481
								3%	3%	3%	3%	3%	20%
							grade 7 events	1067160	1159417	1215737	1168470	1165799	5552
								75%	76%	77%	76%	76%	46%

## 2.2 Compared Parameters

Parameter	Planned	Actual	Parameter	Planned	Actual
Instrument	ACIS	ACIS	Obspar format version number	7	7
Detector	ACIS-012367	ACIS-012367	Obspar file type	PREDICTED	ACTUAL
Grating	NONE	NONE	Obspar update status	NONE	UPDATED
Data mode	FAINT	FAINT	Number of optional ACIS chips dropped	0	0
Observation mode	SECONDARY	SECONDARY	On-chip summing requested	N	N
[deg] Pointing RA	0	167.4000326901381	Subarray requested	NONE	NONE
[deg] Pointing Dec	0	9.433834663974768	Alternating exposures requested	N	N
[deg] Pointing Roll	0.0	176.8049683243362	[s] Primary exposure time	3.2	3.2
[mm] SIM focus pos	-1.429586	-1.428180813131781			
[mm] SIM defocus	0.1037507710433287	0.1051558262725154			
[mm] SIM translation stage pos	250.455976	250.466033080201			
[mm] SIM translation stage offset	0	-0.01005468664627074			
[s] Observation start time (MET)	479938927.582656	479938926.55766			
Observation start date	2013-03-17T20:22:08	2013-03-17T20:22:06			
[s] Observation end time (MET)	480058739.839153	480058738.81415			
Observation end date	2013-03-19T05:39:00	2013-03-19T05:38:58			
Read mode	TIMED	TIMED			

## **2.3 Star Slots**

## **2.4 FID Slots**

## A Summary

### A.1 Status

V&V Scientist	Joy Nichols
V&V Date (YYYY-MM-DD)	2013.03.20
V&V Edition	1
V&V Disposition and Status	OK
V&V Charge Time	80.082795918167

### A.2 Comments