

V&V Reference Report

L2 ASCDS Version : 8.4.5

Observation 62175 - L2 Version 4
Chandra X-Ray Center

L2 Processing Date : Aug 22 2012

Contents

1	Front	2
2	OBI	3
2.1	OBI	3
2.1.1	Images	3
2.1.2	Bias	3
2.1.3	Parameters	4
2.1.4	Events	4
2.2	Compared Parameters	5
2.3	Star Slots	6
2.4	FID Slots	6
A	Summary	7
A.1	Status	7
A.2	Comments	7

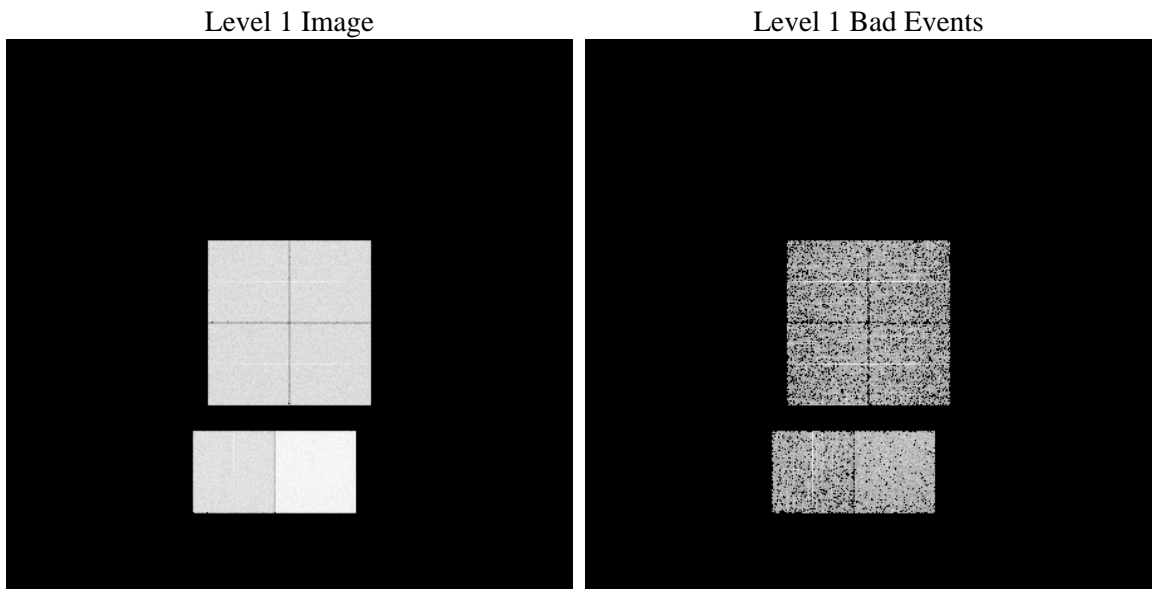
1 Front

seq_num	 	Sequence number
obs_id	62175	Observation id
title	ACIS-012367 diagnostics	Proposal title
observer	CHANDRA engineering request/realtime commanding	Principal investig
object	 	Source name
dtcycle	0	
cycle	P	events from which exps? Prim/Second/Both
ra_targ	0.0	Observer's specified target RA [deg]
dec_targ	0.0	Observer's specified target Dec [deg]
ra_nom	201.33312220249	Nominal RA [deg]
dec_nom	-38.383609722534	Nominal Dec [deg]
roll_nom	57.18553445614	Nominal Roll [deg]
revision	4	Processing version of data
ontime	2683.4431164414	Sum of GTIs [s]
livetime	2649.4637439255	Livetime [s]
ontime0	1150.5677261278	Sum of GTIs [s]
ontime1	1157.0497562885	Sum of GTIs [s]
ontime2	1104.9470874891	Sum of GTIs [s]
ontime3	1105.1932458207	Sum of GTIs [s]
ontime6	1237.7886079624	Sum of GTIs [s]
ontime7	2683.4431164414	Sum of GTIs [s]
l2events	734570	Number of level 2 events

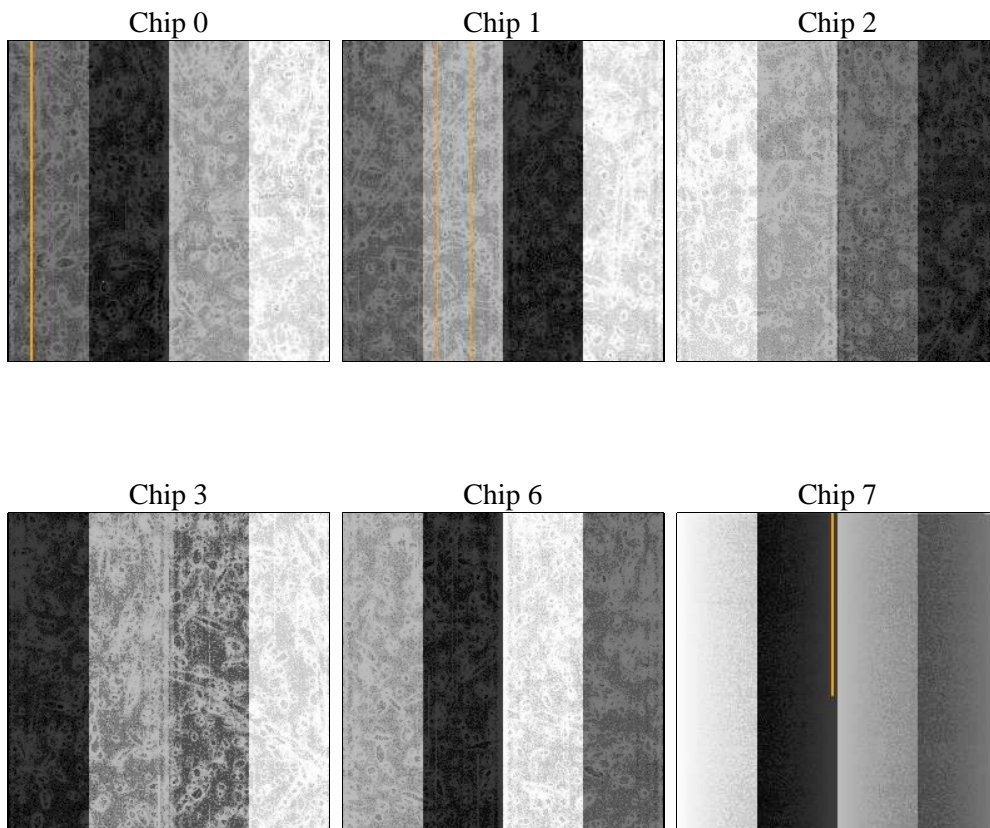
2 OBI

2.1 OBI

2.1.1 Images



2.1.2 Bias



2.1.3 Parameters

obi_num	1	Obi number	sched_exp_time	0.0	[s] Scheduled observation exposure time
ascdsver	8.4.5	Processing system revision	ontime	2683.4431164414	Sum of GTIs [s]
caldsver	4.5.1.1	 	ontime0	1150.5677261278	Sum of GTIs [s]
date	2012-08-22T14:34:54	Date and time of file creation	ontime1	1157.0497562885	Sum of GTIs [s]
revision	4	Processing version of data	ontime2	1104.9470874891	Sum of GTIs [s]
			ontime3	1105.1932458207	Sum of GTIs [s]
			ontime6	1237.7886079624	Sum of GTIs [s]
			ontime7	2683.4431164414	Sum of GTIs [s]
			l1events	835048	Number of level 1 events

2.1.4 Events

	ccd 0	ccd 1	ccd 2	ccd 3	ccd 6	ccd 7		ccd 0	ccd 1	ccd 2	ccd 3	ccd 6	ccd 7
level 1 events	112401	112405	109863	110794	127606	261979	grade 0 events	56129	56105	55184	55954	63249	63679
rejected events	10707	10641	10657	10843	11934	14996		49%	49%	50%	50%	49%	24%
rejected %	9%	9%	9%	9%	9%	5%	grade 1 events	320	323	334	342	351	180
								0%	0%	0%	0%	0%	0%
							grade 2 events	17735	17706	17337	17221	20063	55184
								15%	15%	15%	15%	15%	21%
							grade 3 events	6476	6502	6284	6444	7059	25477
								5%	5%	5%	5%	5%	9%
							grade 4 events	6480	6450	6305	6213	7162	25161
								5%	5%	5%	5%	5%	9%
							grade 5 events	812	825	795	807	901	3456
								0%	0%	0%	0%	0%	1%
							grade 6 events	14874	15001	14096	14119	18351	77997
								13%	13%	12%	12%	14%	29%
							grade 7 events	9575	9493	9528	9694	10470	10845
								8%	8%	8%	8%	8%	4%

2.2 Compared Parameters

Parameter	Planned	Actual
Instrument	ACIS	ACIS
Detector	ACIS-012367	ACIS-012367
Grating	NONE	NONE
Data mode	FAINT	FAINT
Observation mode	SECONDARY	SECONDARY
[deg] Pointing RA	0	201.333122202492
[deg] Pointing Dec	0	-38.38360972253383
[deg] Pointing Roll	0.0	57.18553445614046
[mm] SIM focus pos	-0.782348	-1.038866356238299
[mm] SIM defocus	0	0.4944702831659975
[mm] SIM translation stage pos	-233.592463	250.466033080201
[mm] SIM translation stage offset	0	-0.01005468664627074
[s] Observation start time (MET)	66748999.762521	66748998.99405
Observation start date	2000-02-12T13:23:20	2000-02-12T13:23:18
[s] Observation end time (MET)	66755444.962756	66755444.194285
Observation end date	2000-02-12T15:10:45	2000-02-12T15:10:44
Read mode	TIMED	TIMED

Parameter	Planned	Actual
Obspar format version number	7	7
Obspar file type	PREDICTED	ACTUAL
Obspar update status	NONE	UPDATED
On-chip summing requested	N	N
Subarray requested	NONE	NONE
Alternating exposures requested	N	N
[s] Primary exposure time	3.2	3.2

2.3 Star Slots

2.4 FID Slots

A Summary

A.1 Status

V&V Scientist	Jen Lauer
V&V Date (YYYY-MM-DD)	2012.08.23
V&V Edition	1
V&V Disposition and Status	OK
V&V Charge Time	2.6834431164414

A.2 Comments