

V&V Reference Report

L2 ASCDS Version : 8.4.5

Observation 62075 - L2 Version 5
Chandra X-Ray Center

L2 Processing Date : Aug 25 2012

Contents

1	Front	2
2	OBI	3
2.1	OBI	3
2.1.1	Images	3
2.1.2	Bias	3
2.1.3	Parameters	4
2.1.4	Events	4
2.2	Compared Parameters	5
2.3	Star Slots	6
2.4	FID Slots	6
A	Summary	7
A.1	Status	7
A.2	Comments	7

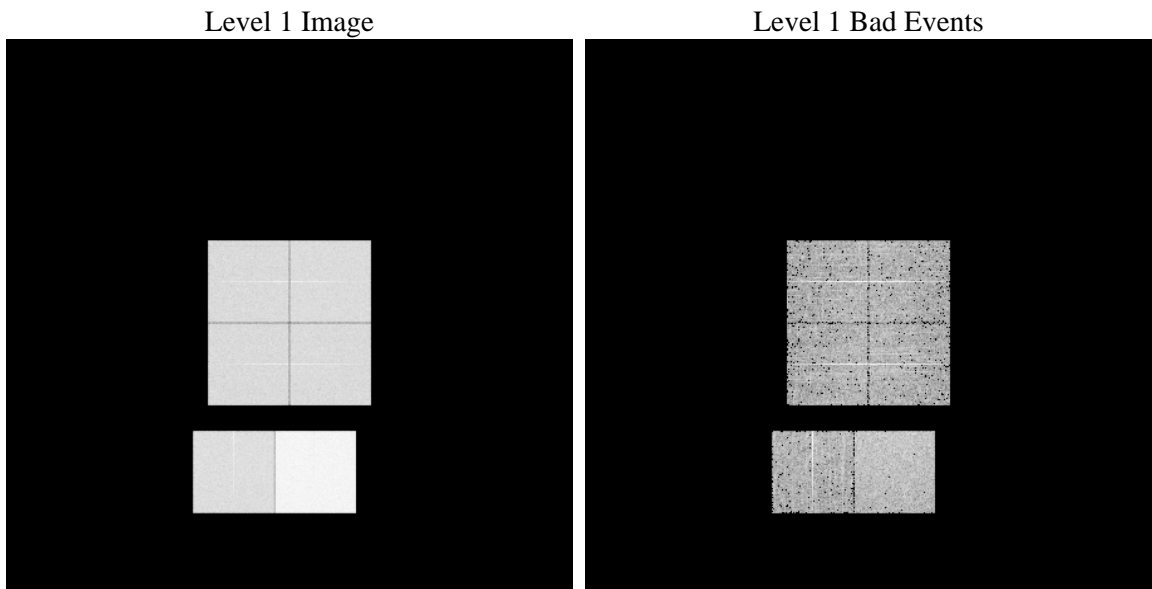
1 Front

seq_num	 	Sequence number
obs_id	62075	Observation id
title	ACIS-012367 diagnostics	Proposal title
observer	CHANDRA engineering request/realtime commanding	Principal investig
object	 	Source name
dtcycle	0	
cycle	P	events from which exps? Prim/Second/Both
ra_targ	0.0	Observer's specified target RA [deg]
dec_targ	0.0	Observer's specified target Dec [deg]
ra_nom	63.046953550036	Nominal RA [deg]
dec_nom	52.994406400759	Nominal Dec [deg]
roll_nom	316.52947670335	Nominal Roll [deg]
revision	5	Processing version of data
ontime	5547.7582146078	Sum of GTIs [s]
livetime	5477.5091596355	Livetime [s]
ontime0	2199.3466453254	Sum of GTIs [s]
ontime1	2312.8239054531	Sum of GTIs [s]
ontime2	2141.0900054723	Sum of GTIs [s]
ontime3	2170.0951455534	Sum of GTIs [s]
ontime6	2384.2088752985	Sum of GTIs [s]
ontime7	5547.7582146078	Sum of GTIs [s]
l2events	1384149	Number of level 2 events

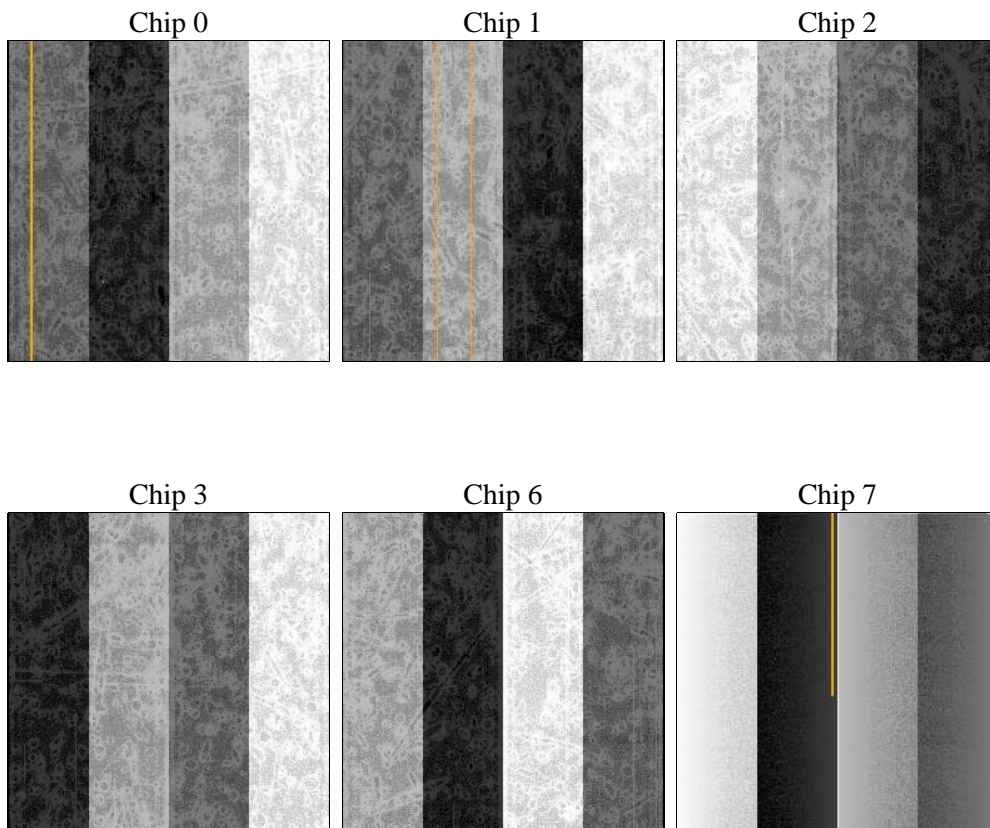
2 OBI

2.1 OBI

2.1.1 Images



2.1.2 Bias



2.1.3 Parameters

obi_num	0	Obi number	sched_exp_time	0.0	[s] Scheduled observation exposure time
ascdsver	8.4.5	Processing system revision	ontime	5547.7582146078	Sum of GTIs [s]
caldbver	4.5.1.1	 	ontime0	2199.3466453254	Sum of GTIs [s]
date	2012-08-25T23:13:46	Date and time of file creation	ontime1	2312.8239054531	Sum of GTIs [s]
revision	5	Processing version of data	ontime2	2141.0900054723	Sum of GTIs [s]
			ontime3	2170.0951455534	Sum of GTIs [s]
			ontime6	2384.2088752985	Sum of GTIs [s]
			ontime7	5547.7582146078	Sum of GTIs [s]
			l1events	1581037	Number of level 1 events

2.1.4 Events

	ccd 0	ccd 1	ccd 2	ccd 3	ccd 6	ccd 7		ccd 0	ccd 1	ccd 2	ccd 3	ccd 6	ccd 7
level 1 events	206131	215061	203715	207566	232779	515785	grade 0 events	102143	107196	101667	103310	114341	124031
rejected events	21254	21027	21563	22320	22371	31458		49%	49%	49%	49%	49%	24%
rejected %	10%	9%	10%	10%	9%	6%	grade 1 events	647	616	586	671	661	372
								0%	0%	0%	0%	0%	0%
							grade 2 events	32458	33952	31820	32323	36215	108056
								15%	15%	15%	15%	15%	20%
							grade 3 events	11777	12320	11582	11901	12952	49503
								5%	5%	5%	5%	5%	9%
							grade 4 events	11790	12500	11352	11839	13051	49303
								5%	5%	5%	5%	5%	9%
							grade 5 events	1480	1636	1483	1502	1740	7152
								0%	0%	0%	0%	0%	1%
							grade 6 events	26709	28066	25731	25873	33849	153703
								12%	13%	12%	12%	14%	29%
							grade 7 events	19127	18775	19494	20147	19970	23665
								9%	8%	9%	9%	8%	4%

2.2 Compared Parameters

Parameter	Planned	Actual	Parameter	Planned	Actual
Instrument	ACIS	ACIS	Obspar format version number	7	7
Detector	ACIS-012367	ACIS-012367	Obspar file type	PREDICTED	ACTUAL
Grating	NONE	NONE	Obspar update status	NONE	UPDATED
Data mode	FAINT	FAINT	On-chip summing requested	N	N
Observation mode	SECONDARY	SECONDARY	Subarray requested	NONE	NONE
[deg] Pointing RA	0	63.04695355003593	Alternating exposures requested	N	N
[deg] Pointing Dec	0	52.99440640075886	[s] Primary exposure time	3.2	3.2
[deg] Pointing Roll	0.0	316.529476703349			
[mm] SIM focus pos	-0.782348	-0.6828225247311905			
[mm] SIM defocus	0	0.8505141146731063			
[mm] SIM translation stage pos	-233.592463	250.466033080201			
[mm] SIM translation stage offset	0	-0.01005468664627074			
[s] Observation start time (MET)	72914545.19185901	72914544.42339499			
Observation start date	2000-04-23T22:02:25	2000-04-23T22:02:24			
[s] Observation end time (MET)	72924743.942233	72924743.173769			
Observation end date	2000-04-24T00:52:24	2000-04-24T00:52:23			
Read mode	TIMED	TIMED			

2.3 Star Slots

2.4 FID Slots

A Summary

A.1 Status

V&V Scientist	Jen Lauer
V&V Date (YYYY-MM-DD)	2012.08.28
V&V Edition	1
V&V Disposition and Status	OK
V&V Charge Time	5.5477582146078

A.2 Comments