

# V&V Reference Report

## L2 ASCDS Version : 8.4.5

Observation 61875 - L2 Version 3  
Chandra X-Ray Center

L2 Processing Date : Sep 2 2012

## Contents

<b>1</b>	<b>Front</b>	<b>2</b>
<b>2</b>	<b>OBI</b>	<b>3</b>
2.1	OBI . . . . .	3
2.1.1	Images . . . . .	3
2.1.2	Bias . . . . .	3
2.1.3	Parameters . . . . .	4
2.1.4	Events . . . . .	4
2.2	Compared Parameters . . . . .	5
2.3	Star Slots . . . . .	6
2.4	FID Slots . . . . .	6
<b>A</b>	<b>Summary</b>	<b>7</b>
A.1	Status . . . . .	7
A.2	Comments . . . . .	7

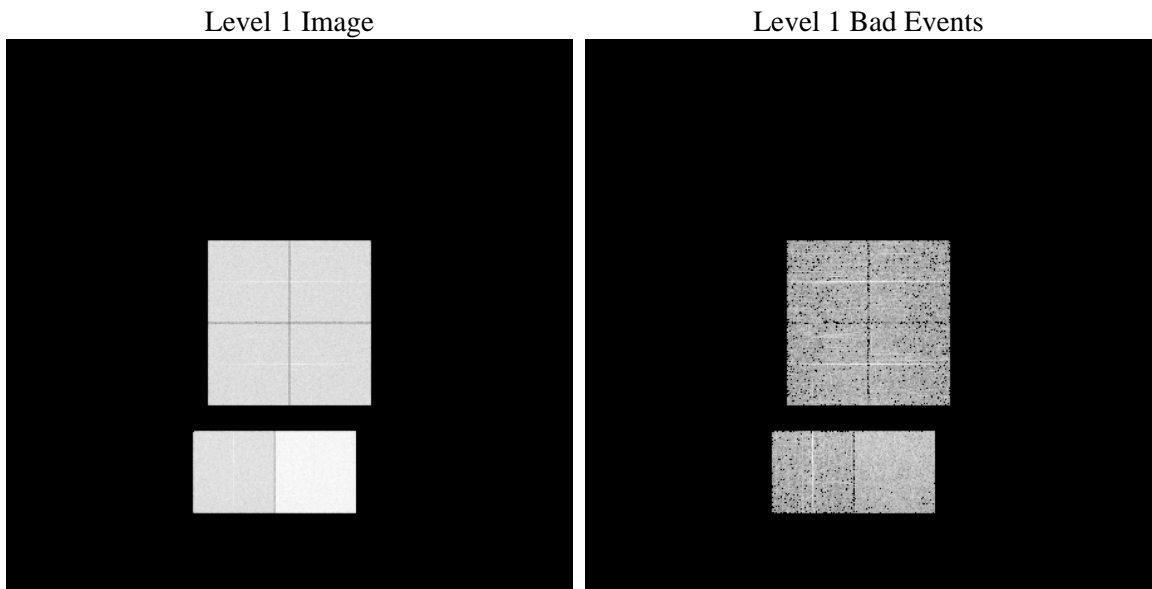
# 1 Front

seq_num	&#160	Sequence number
obs_id	61875	Observation id
title	ACIS-012367 diagnostics	Proposal title
observer	CHANDRA engineering request/realtime commanding	Principal investig
object	&#160	Source name
dtcycle	0	&#160
cycle	P	events from which exps? Prim/Second/Both
ra_targ	0.0	Observer's specified target RA [deg]
dec_targ	0.0	Observer's specified target Dec [deg]
ra_nom	162.70932079182	Nominal RA [deg]
dec_nom	52.208158245895	Nominal Dec [deg]
roll_nom	46.011390216285	Nominal Roll [deg]
revision	3	Processing version of data
ontime	5557.7726244032	Sum of GTIs [s]
livetime	5487.3967609441	Livetime [s]
ontime0	2340.0289495438	Sum of GTIs [s]
ontime1	2303.7324751019	Sum of GTIs [s]
ontime2	2232.3886649609	Sum of GTIs [s]
ontime3	2268.2041451931	Sum of GTIs [s]
ontime6	2446.2560150027	Sum of GTIs [s]
ontime7	5557.7726244032	Sum of GTIs [s]
l2events	1252657	Number of level 2 events

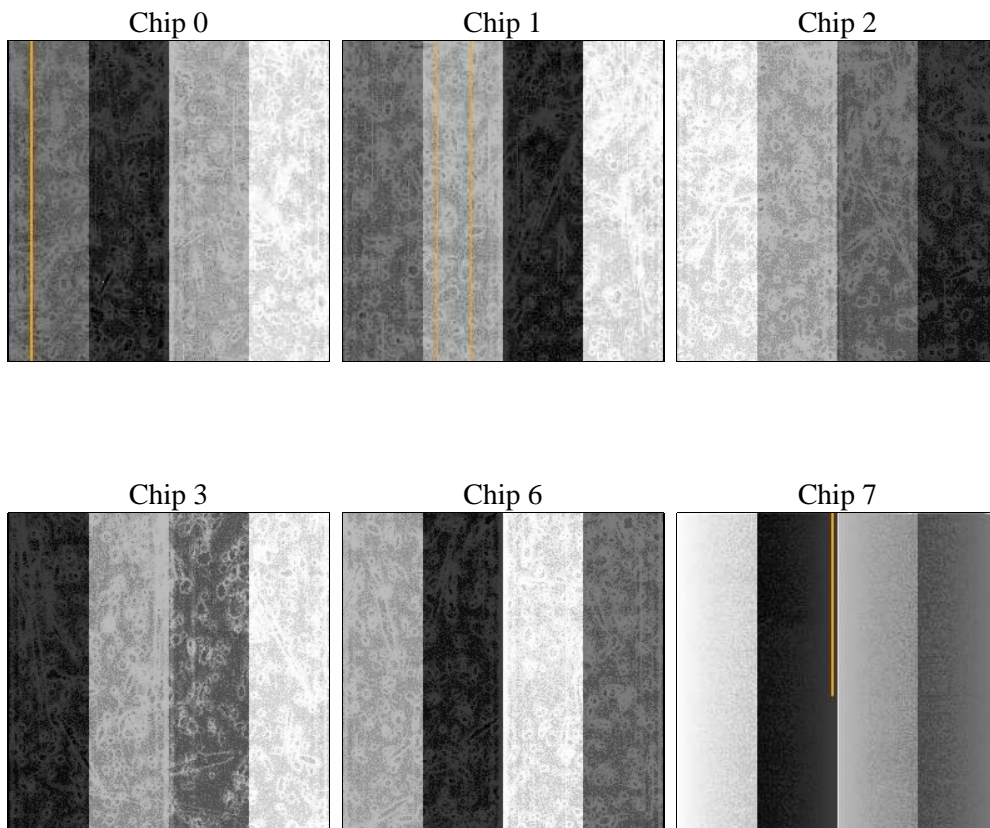
## 2 OBI

### 2.1 OBI

#### 2.1.1 Images



#### 2.1.2 Bias



### 2.1.3 Parameters

obi_num	0	Obi number	sched_exp_time	0.0	[s] Scheduled observation exposure time
ascdsver	8.4.5	Processing system revision	ontime	5557.7726244032	Sum of GTIs [s]
caldsver	4.5.1.1	&#160	ontime0	2340.0289495438	Sum of GTIs [s]
date	2012-09-02T15:16:56	Date and time of file creation	ontime1	2303.7324751019	Sum of GTIs [s]
revision	3	Processing version of data	ontime2	2232.3886649609	Sum of GTIs [s]
			ontime3	2268.2041451931	Sum of GTIs [s]
			ontime6	2446.2560150027	Sum of GTIs [s]
			ontime7	5557.7726244032	Sum of GTIs [s]
			l1events	1429680	Number of level 1 events

### 2.1.4 Events

	ccd 0	ccd 1	ccd 2	ccd 3	ccd 6	ccd 7		ccd 0	ccd 1	ccd 2	ccd 3	ccd 6	ccd 7
level 1 events	193181	190442	187727	189767	211788	456775	grade 0 events	96109	94958	93893	95592	104320	110522
rejected events	18916	18357	19288	19099	20492	28962		49%	49%	50%	50%	49%	24%
rejected %	9%	9%	10%	10%	9%	6%	grade 1 events	502	490	535	498	550	281
								0%	0%	0%	0%	0%	0%
							grade 2 events	30542	30117	29416	29691	33290	94709
								15%	15%	15%	15%	15%	20%
							grade 3 events	11281	10730	10648	10767	11873	44295
								5%	5%	5%	5%	5%	9%
							grade 4 events	10976	11024	10508	10781	11767	43644
								5%	5%	5%	5%	5%	9%
							grade 5 events	1396	1365	1381	1438	1531	6417
								0%	0%	0%	0%	0%	1%
							grade 6 events	25357	25256	23974	23837	30046	134643
								13%	13%	12%	12%	14%	29%
							grade 7 events	17018	16502	17372	17163	18411	22264
								8%	8%	9%	9%	8%	4%

## 2.2 Compared Parameters

Parameter	Planned	Actual	Parameter	Planned	Actual
Instrument	ACIS	ACIS	Obspar format version number	7	7
Detector	ACIS-012367	ACIS-012367	Obspar file type	PREDICTED	ACTUAL
Grating	NONE	NONE	Obspar update status	NONE	UPDATED
Data mode	FAINT	FAINT	On-chip summing requested	N	N
Observation mode	SECONDARY	SECONDARY	Subarray requested	NONE	NONE
[deg] Pointing RA	0	162.7093207918203	Alternating exposures requested	N	N
[deg] Pointing Dec	0	52.20815824589545	[s] Primary exposure time	3.2	3.2
[deg] Pointing Roll	0.0	46.01139021628477			
[mm] SIM focus pos	-0.782348	-0.6828225247311905			
[mm] SIM defocus	0	0.8505141146731063			
[mm] SIM translation stage pos	-233.592463	250.466033080201			
[mm] SIM translation stage offset	0	-0.01005468664627074			
[s] Observation start time (MET)	88631588.27625	88631587.507805			
Observation start date	2000-10-22T19:53:08	2000-10-22T19:53:07			
[s] Observation end time (MET)	88678738.278055	88678737.509588			
Observation end date	2000-10-23T08:58:58	2000-10-23T08:58:57			
Read mode	TIMED	TIMED			

## 2.3 Star Slots

## 2.4 FID Slots

## A Summary

### A.1 Status

V&V Scientist	Beth Sundheim
V&V Date (YYYY-MM-DD)	2012.09.10
V&V Edition	1
V&V Disposition and Status	OK
V&V Charge Time	5.5577726244032

### A.2 Comments