

V&V Reference Report

L2 ASCDS Version : 7.6.10

Observation 61875 - L2 Version 001
Chandra X-Ray Center

L2 Processing Date : Jun 12 2007

Contents

1	Front	2
2	OBI	3
2.1	OBI	3
2.1.1	Images	3
2.1.2	Bias	3
2.1.3	Parameters	4
2.1.4	Events	4
2.2	Compared Parameters	5
2.3	Star Slots	6
2.4	FID Slots	6
A	Summary	7
A.1	Status	7
A.2	Comments	7

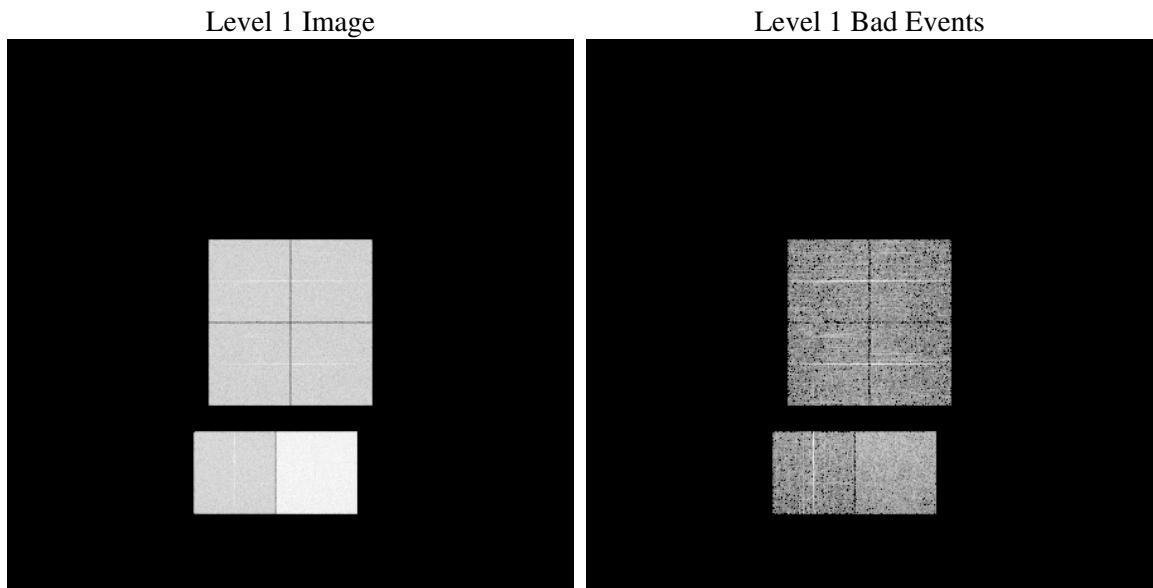
1 Front

seq_num	
obs_id	61875
title	ACIS-012367 diagnostics
observer	CHANDRA engineering request/realtime commanding
object	
dtcycle	0
cycle	P
ra_targ	0.0
dec_targ	0.0
ra_nom	162.70932079182
dec_nom	52.208158245895
roll_nom	46.011390216285
revision	2
ontime	5556.9975332618
livetime	5486.6314844734
ontime0	2338.732003659
ontime1	2303.1215439439
ontime2	2231.8598138094
ontime3	2267.346974045
ontime6	2445.8092438579
ontime7	5556.9975332618
l2events	1252651

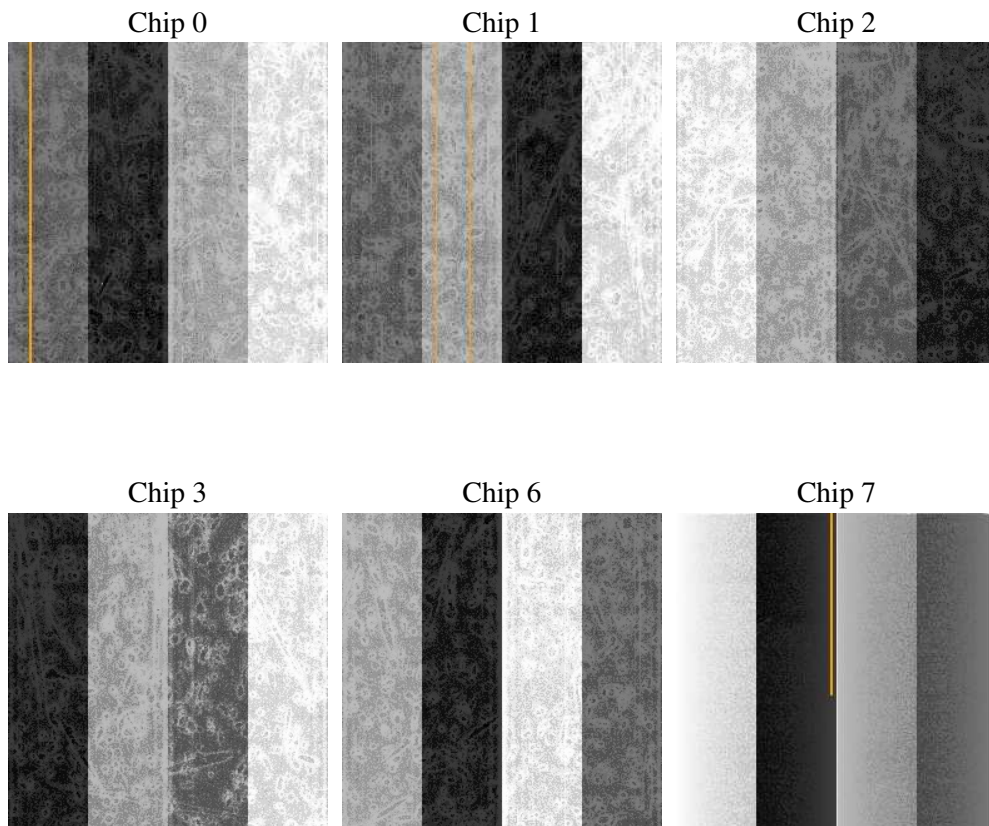
2 OBI

2.1 OBI

2.1.1 Images



2.1.2 Bias



2.1.3 Parameters

obi_num	0
ascdsver	7.6.10
caldsver	3.4.0
date	2007-06-12T20:24:12
revision	2

sched_exp_time	0.0
ontime	5556.9975332618
ontime0	2338.732003659
ontime1	2303.1215439439
ontime2	2231.8598138094
ontime3	2267.346974045
ontime6	2445.8092438579
ontime7	5556.9975332618
l1events	1429680

2.1.4 Events

	ccd 0	ccd 1	ccd 2	ccd 3	ccd 6	ccd 7
level 1 events	193181	190442	187727	189767	211788	456775
rejected events	18915	18359	19286	19099	20488	28968
rejected %	9%	9%	10%	10%	9%	6%

	ccd 0	ccd 1	ccd 2	ccd 3	ccd 6	ccd 7
grade 0 events	96114	94962	93900	95596	104326	110504
	49%	49%	50%	50%	49%	24%
grade 1 events	502	490	535	498	551	281
	0%	0%	0%	0%	0%	0%
grade 2 events	30537	30113	29409	29687	33284	94730
	15%	15%	15%	15%	15%	20%
grade 3 events	11283	10732	10650	10769	11876	44281
	5%	5%	5%	5%	5%	9%
grade 4 events	10976	11025	10509	10782	11768	43633
	5%	5%	5%	5%	5%	9%
grade 5 events	1395	1367	1380	1438	1529	6416
	0%	0%	0%	0%	0%	1%
grade 6 events	25356	25251	23973	23834	30046	134659
	13%	13%	12%	12%	14%	29%
grade 7 events	17018	16502	17371	17163	18408	22271
	8%	8%	9%	9%	8%	4%

2.2 Compared Parameters

Parameter	Planned	Actual	Parameter	Planned	Actual
Instrument	ACIS	ACIS	Obspar format version number	6	6
Detector	ACIS-012367	ACIS-012367	Obspar file type	PREDICTED	ACTUAL
Grating	NONE	NONE	Obspar update status	NONE	UPDATED
Data mode	FAINT	FAINT	On-chip summing requested	N	N
Observation mode	SECONDARY	SECONDARY	Subarray requested	NONE	NONE
Pointing RA	0	162.7093207918205	Alternating exposures requested	N	N
Pointing Dec	0	52.20815824589545	Primary exposure time	3.2	3.2
Pointing Roll	0.0	46.01139021628462			
SIM focus pos (mm)	-0.782348	-0.6828225247311905			
SIM defocus (mm)	0	0.8505141146731063			
SIM translation stage pos (mm)	-233.592463	250.466033080201			
SIM translation stage offset (mm)	0	-0.01005468664627074			
Observation start time	88631588.27625	88631587.507805			
Observation start date	2000-10-22T19:53:08	2000-10-22T19:53:07			
Observation end time	88678738.278055	88678737.509588			
Observation end date	2000-10-23T08:58:58	2000-10-23T08:58:57			
Read mode	TIMED	TIMED			

2.3 Star Slots

2.4 FID Slots

A Summary

A.1 Status

V&V Scientist	Jen Lauer
V&V Date (YYYY-MM-DD)	2007.06.13
V&V Edition	1
V&V Disposition and Status	OK
V&V Charge Time	5.55699753

A.2 Comments