

V&V Reference Report

L2 ASCDS Version : 8.4.5

Observation 61765 - L2 Version 4
Chandra X-Ray Center

L2 Processing Date : Sep 7 2012

Contents

1	Front	2
2	OBI	3
2.1	OBI	3
2.1.1	Images	3
2.1.2	Bias	3
2.1.3	Parameters	4
2.1.4	Events	4
2.2	Compared Parameters	5
2.3	Star Slots	6
2.4	FID Slots	6
A	Summary	7
A.1	Status	7
A.2	Comments	7

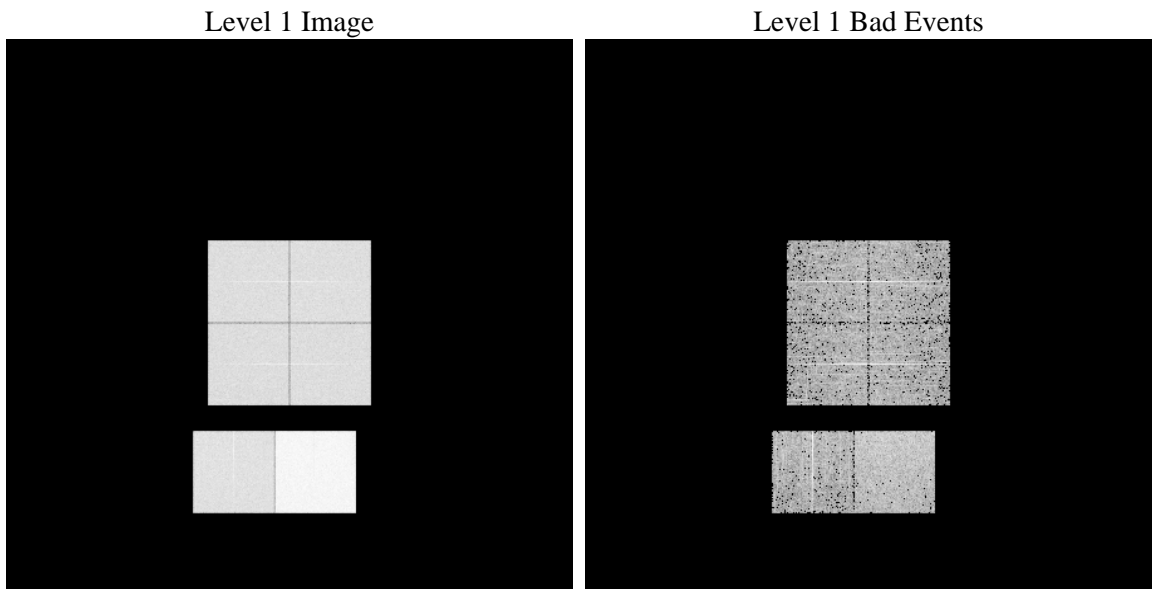
1 Front

seq_num	 	Sequence number
obs_id	61765	Observation id
title	ACIS-012367 diagnostics	Proposal title
observer	CHANDRA engineering request/realtime commanding	Principal investig
object	 	Source name
dtcycle	0	
cycle	P	events from which exps? Prim/Second/Both
ra_targ	0.0	Observer's specified target RA [deg]
dec_targ	0.0	Observer's specified target Dec [deg]
ra_nom	336.02976212049	Nominal RA [deg]
dec_nom	16.996074237222	Nominal Dec [deg]
roll_nom	319.50142573605	Nominal Roll [deg]
revision	4	Processing version of data
ontime	5768.984902963	Sum of GTIs [s]
livetime	5695.9345424561	Livetime [s]
ontime0	2481.6432159394	Sum of GTIs [s]
ontime1	2527.0588358492	Sum of GTIs [s]
ontime2	2381.2534949481	Sum of GTIs [s]
ontime3	2384.3303151131	Sum of GTIs [s]
ontime6	2621.1311454177	Sum of GTIs [s]
ontime7	5768.984902963	Sum of GTIs [s]
l2events	1249176	Number of level 2 events

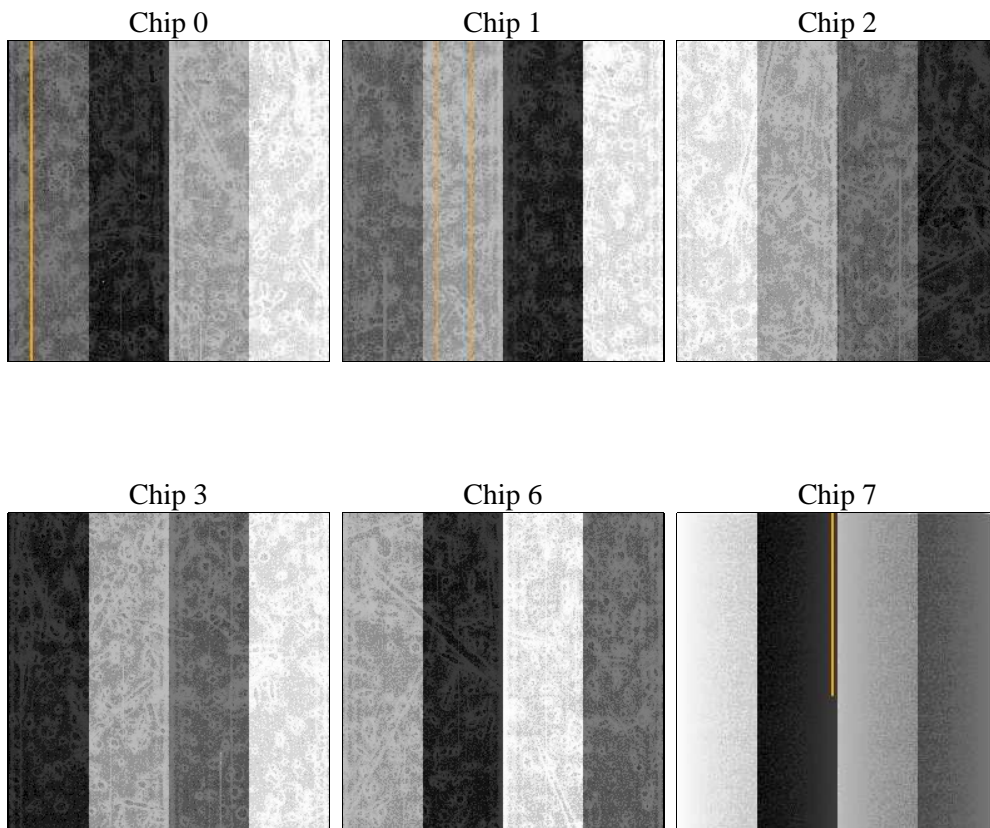
2 OBI

2.1 OBI

2.1.1 Images



2.1.2 Bias



2.1.3 Parameters

obi_num	1	Obi number	sched_exp_time	0.0	[s] Scheduled observation exposure time
ascdsver	8.4.5	Processing system revision	ontime	5768.984902963	Sum of GTIs [s]
caldsver	4.5.1.1	 	ontime0	2481.6432159394	Sum of GTIs [s]
date	2012-09-07T05:47:20	Date and time of file creation	ontime1	2527.0588358492	Sum of GTIs [s]
revision	4	Processing version of data	ontime2	2381.2534949481	Sum of GTIs [s]
			ontime3	2384.3303151131	Sum of GTIs [s]
			ontime6	2621.1311454177	Sum of GTIs [s]
			ontime7	5768.984902963	Sum of GTIs [s]
			l1events	1425131	Number of level 1 events

2.1.4 Events

	ccd 0	ccd 1	ccd 2	ccd 3	ccd 6	ccd 7		ccd 0	ccd 1	ccd 2	ccd 3	ccd 6	ccd 7
level 1 events	192729	196767	186755	188225	214291	446364	grade 0 events	96429	98335	93816	95061	106187	107519
rejected events	18224	18394	18036	18266	20174	29238		50%	49%	50%	50%	49%	24%
rejected %	9%	9%	9%	9%	9%	6%	grade 1 events	505	479	491	473	532	267
								0%	0%	0%	0%	0%	0%
							grade 2 events	30208	31170	29460	29932	33670	93267
								15%	15%	15%	15%	15%	20%
							grade 3 events	11224	11611	10652	10573	11838	42751
								5%	5%	5%	5%	5%	9%
							grade 4 events	11166	11298	10706	10757	11888	42331
								5%	5%	5%	5%	5%	9%
							grade 5 events	1410	1390	1285	1429	1615	6389
								0%	0%	0%	0%	0%	1%
							grade 6 events	25478	25959	24085	23636	30534	131492
								13%	13%	12%	12%	14%	29%
							grade 7 events	16309	16525	16260	16364	18027	22348
								8%	8%	8%	8%	8%	5%

2.2 Compared Parameters

Parameter	Planned	Actual
Instrument	ACIS	ACIS
Detector	ACIS-012367	ACIS-012367
Grating	NONE	NONE
Data mode	FAINT	FAINT
Observation mode	SECONDARY	SECONDARY
[deg] Pointing RA	0	336.029762120486
[deg] Pointing Dec	0	16.99607423722237
[deg] Pointing Roll	0.0	319.5014257360501
[mm] SIM focus pos	-0.782348	-0.6828225247311905
[mm] SIM defocus	0	0.8505141146731063
[mm] SIM translation stage pos	-233.592463	250.466033080201
[mm] SIM translation stage offset	0	-0.01005468664627074
[s] Observation start time (MET)	96627109.281418	96627108.512954
Observation start date	2001-01-23T08:51:49	2001-01-23T08:51:48
[s] Observation end time (MET)	96639085.381878	96639084.613414
Observation end date	2001-01-23T12:11:25	2001-01-23T12:11:24
Read mode	TIMED	TIMED

Parameter	Planned	Actual
Obspar format version number	7	7
Obspar file type	PREDICTED	ACTUAL
Obspar update status	NONE	UPDATED
On-chip summing requested	N	N
Subarray requested	NONE	NONE
Alternating exposures requested	N	N
[s] Primary exposure time	3.2	3.2

2.3 Star Slots

2.4 FID Slots

A Summary

A.1 Status

V&V Scientist	Jen Lauer
V&V Date (YYYY-MM-DD)	2012.09.17
V&V Edition	1
V&V Disposition and Status	OK
V&V Charge Time	5.768984902963

A.2 Comments