

V&V Reference Report

L2 ASCDS Version : 7.6.9

Observation 61765 - L2 Version 001
Chandra X-Ray Center

L2 Processing Date : Nov 4 2006

Contents

1	Front	2
2	OBI	3
2.1	OBI	3
2.1.1	Images	3
2.1.2	Bias	3
2.1.3	Parameters	4
2.1.4	Events	4
2.2	Compared Parameters	5
2.3	Aspect	6
2.4	Star Slots	8
2.5	FID Slots	8
A	Summary	9
A.1	Status	9
A.2	Comments	9

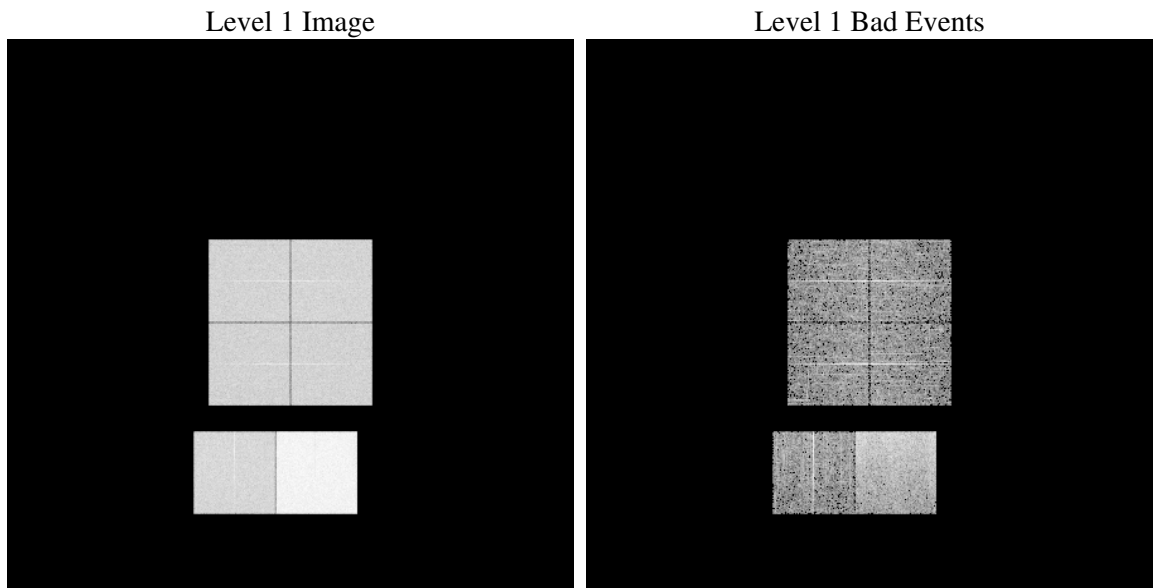
1 Front

seq_num	
obs_id	61765
title	ACIS-012367 diagnostics
observer	CHANDRA engineering request/realtime commanding
object	
dtcycle	0
cycle	P
ra_targ	0.0
dec_targ	0.0
ra_nom	336.02976212049
dec_nom	16.996074237222
roll_nom	319.50142573605
revision	3
ontime	5768.9849029779
livetime	5695.9345424708
ontime0	2480.0432159454
ontime1	2525.4588358551
ontime2	2379.6534949541
ontime3	2382.730315119
ontime6	2619.5311454237
ontime7	5768.9849029779
l2events	1235714

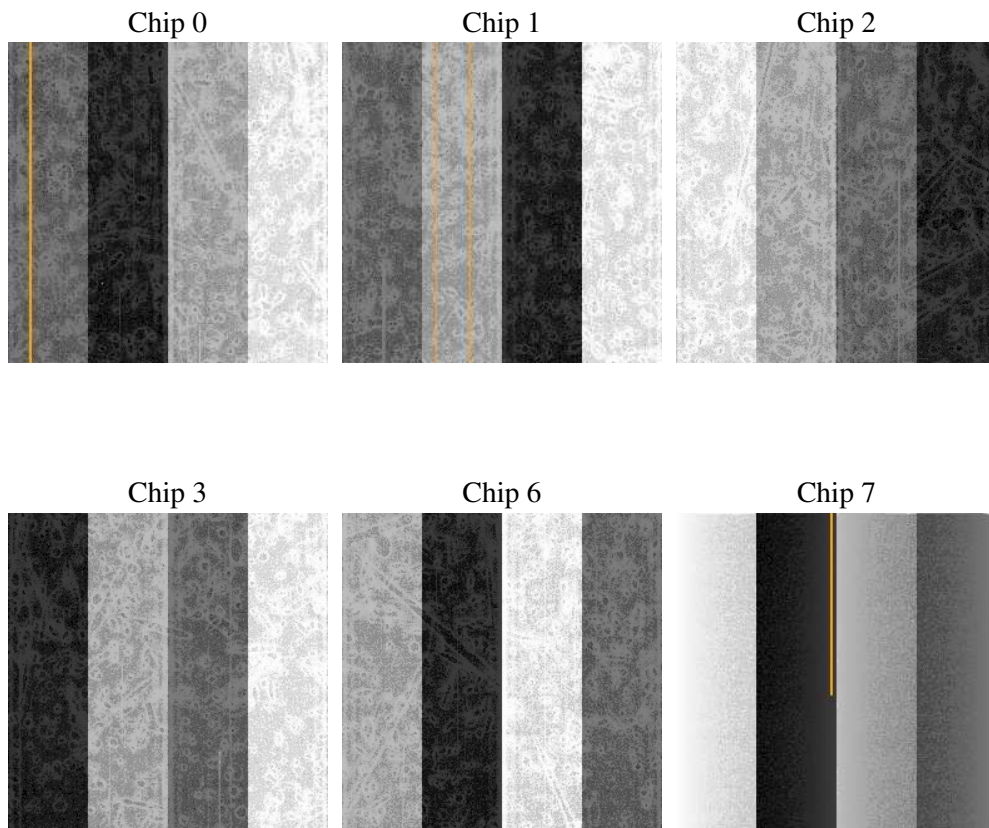
2 OBI

2.1 OBI

2.1.1 Images



2.1.2 Bias



2.1.3 Parameters

obi_num	1
ascdsver	7.6.9
caldbver	3.2.3
date	2006-11-04T08:16:39
revision	3

sched_exp_time	0.0
ontime	5772.2379978299
ontime0	2482.6340910345
ontime1	2528.0086709559
ontime2	2382.1622900516
ontime3	2385.4032702148
ontime6	2621.9989005178
ontime7	5772.2379978299
l1events	1425131

2.1.4 Events

	ccd 0	ccd 1	ccd 2	ccd 3	ccd 6	ccd 7
level 1 events	192729	196767	186755	188225	214291	446364
rejected events	18451	18618	18263	18478	20427	41743
rejected %	9%	9%	9%	9%	9%	9%

	ccd 0	ccd 1	ccd 2	ccd 3	ccd 6	ccd 7
grade 0 events	96432	98338	93819	95065	106192	78549
	50%	49%	50%	50%	49%	17%
grade 1 events	505	479	491	474	532	168
	0%	0%	0%	0%	0%	0%
grade 2 events	30205	31167	29457	29928	33665	120045
	15%	15%	15%	15%	15%	26%
grade 3 events	11226	11611	10654	10574	11841	31633
	5%	5%	5%	5%	5%	7%
grade 4 events	11167	11300	10707	10757	11889	31181
	5%	5%	5%	5%	5%	6%
grade 5 events	1410	1389	1285	1428	1614	6276
	0%	0%	0%	0%	0%	1%
grade 6 events	25475	25959	24082	23635	30532	143427
	13%	13%	12%	12%	14%	32%
grade 7 events	16309	16524	16260	16364	18026	35085
	8%	8%	8%	8%	8%	7%

2.2 Compared Parameters

Parameter	Planned	Actual	Parameter	Planned	Actual
Instrument	ACIS	ACIS	Obspar format version number	6	6
Detector	ACIS-012367	ACIS-012367	Obspar file type	PREDICTED	ACTUAL
Grating	NONE	NONE	Obspar update status	NONE	UPDATED
Data mode	FAINT	FAINT	On-chip summing requested	N	N
Observation mode	SECONDARY	SECONDARY	Subarray requested	NONE	NONE
Pointing RA	0	336.029762120486	Alternating exposures requested	N	N
Pointing Dec	0	16.99607423722238	Primary exposure time	3.2	3.2
Pointing Roll	0.0	319.5014257360501			
SIM focus pos (mm)	-0.782348	-0.6828225247311905			
SIM defocus (mm)	0	0.8505141146731063			
SIM translation stage pos (mm)	-233.592463	250.466033080201			
SIM translation stage offset (mm)	0	-0.01005468664627074			
Observation start time	96627109.281418	96627108.512954			
Observation start date	2001-01-23T08:51:49	2001-01-23T08:51:48			
Observation end time	96639085.381878	96639084.613414			
Observation end date	2001-01-23T12:11:25	2001-01-23T12:11:24			
Read mode	TIMED	TIMED			

2.3 Aspect

2.4 Star Slots

2.5 FID Slots

A Summary

A.1 Status

V&V Scientist	Jen Lauer
V&V Date (YYYY-MM-DD)	2006.11.06
V&V Edition	1
V&V Disposition and Status	OK
V&V Charge Time	5.7689849

A.2 Comments