

V&V Reference Report

L2 ASCDS Version : 8.4.5

Observation 61755 - L2 Version 4
Chandra X-Ray Center

L2 Processing Date : Sep 7 2012

Contents

1	Front	2
2	OBI	3
2.1	OBI	3
2.1.1	Images	3
2.1.2	Bias	3
2.1.3	Parameters	4
2.1.4	Events	4
2.2	Compared Parameters	5
2.3	Star Slots	6
2.4	FID Slots	6
A	Summary	7
A.1	Status	7
A.2	Comments	7

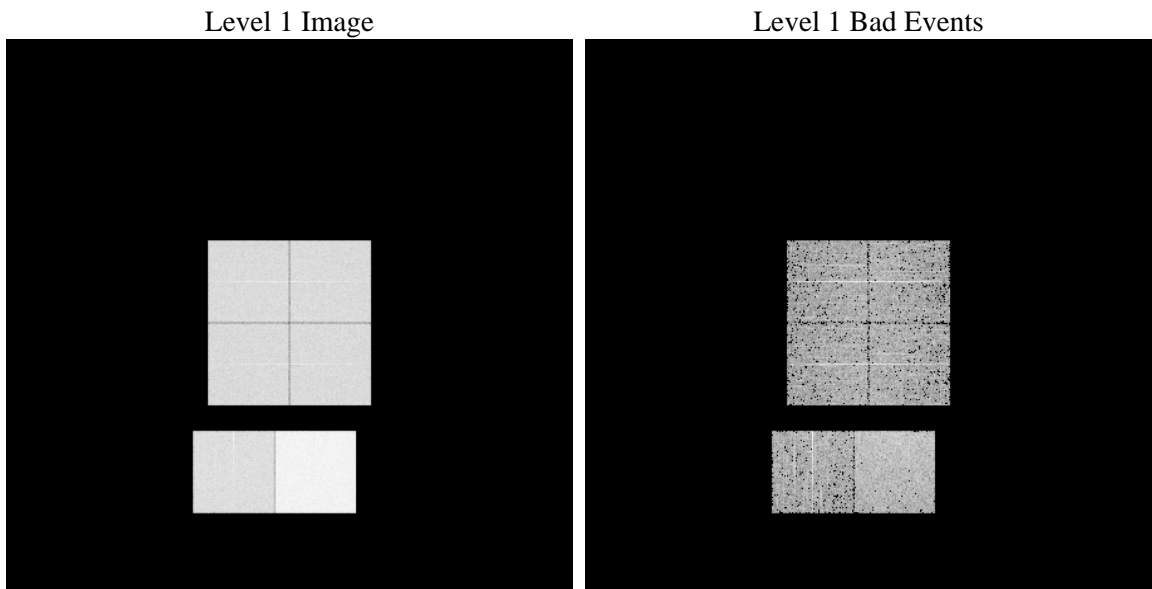
1 Front

seq_num	 	Sequence number
obs_id	61755	Observation id
title	ACIS-012367 diagnostics	Proposal title
observer	CHANDRA engineering request/realtime commanding	Principal investig
object	 	Source name
dtcycle	0	
cycle	P	events from which exps? Prim/Second/Both
ra_targ	0.0	Observer's specified target RA [deg]
dec_targ	0.0	Observer's specified target Dec [deg]
ra_nom	355.16615226001	Nominal RA [deg]
dec_nom	38.574976189771	Nominal Dec [deg]
roll_nom	317.3343610091	Nominal Roll [deg]
revision	4	Processing version of data
ontime	5885.448863104	Sum of GTIs [s]
livetime	5810.9237658075	Livetime [s]
ontime0	2518.1018556207	Sum of GTIs [s]
ontime1	2514.9015966058	Sum of GTIs [s]
ontime2	2408.0324254483	Sum of GTIs [s]
ontime3	2433.9604563117	Sum of GTIs [s]
ontime6	2660.8296487927	Sum of GTIs [s]
ontime7	5885.448863104	Sum of GTIs [s]
l2events	1250385	Number of level 2 events

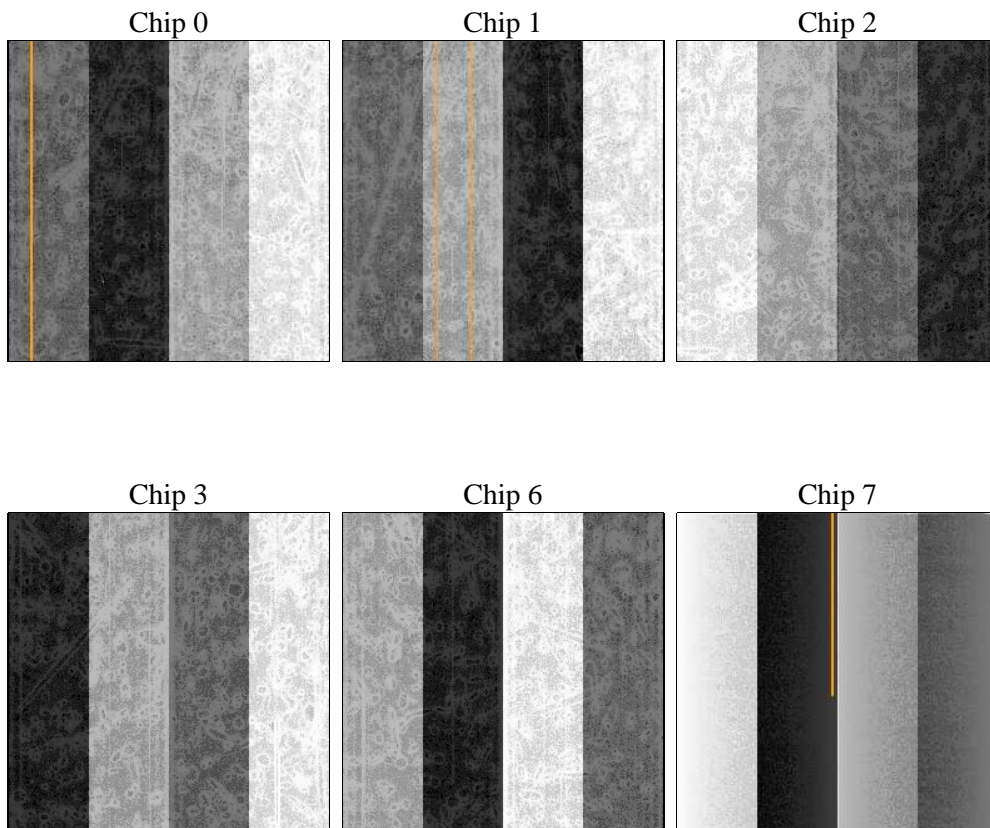
2 OBI

2.1 OBI

2.1.1 Images



2.1.2 Bias



2.1.3 Parameters

obi_num	0	Obi number	sched_exp_time	0.0	[s] Scheduled observation exposure time
ascdsver	8.4.5	Processing system revision	ontime	5885.448863104	Sum of GTIs [s]
caldsver	4.5.1.1	 	ontime0	2518.1018556207	Sum of GTIs [s]
date	2012-09-07T12:09:31	Date and time of file creation	ontime1	2514.9015966058	Sum of GTIs [s]
revision	4	Processing version of data	ontime2	2408.0324254483	Sum of GTIs [s]
			ontime3	2433.9604563117	Sum of GTIs [s]
			ontime6	2660.8296487927	Sum of GTIs [s]
			ontime7	5885.448863104	Sum of GTIs [s]
			l1events	1426697	Number of level 1 events

2.1.4 Events

	ccd 0	ccd 1	ccd 2	ccd 3	ccd 6	ccd 7		ccd 0	ccd 1	ccd 2	ccd 3	ccd 6	ccd 7
level 1 events	192279	192806	187306	190228	214657	449421	grade 0 events	96275	96208	94288	95932	106385	108284
rejected events	17822	18487	18508	19196	19625	29586		50%	49%	50%	50%	49%	24%
rejected %	9%	9%	9%	10%	9%	6%	grade 1 events	516	491	467	496	508	294
								0%	0%	0%	0%	0%	0%
							grade 2 events	30796	30750	29419	30177	33626	93070
								16%	15%	15%	15%	15%	20%
							grade 3 events	11081	10946	10656	10845	12065	42762
								5%	5%	5%	5%	5%	9%
							grade 4 events	11103	10952	10763	10761	12117	42821
								5%	5%	5%	5%	5%	9%
							grade 5 events	1387	1454	1304	1371	1566	6492
								0%	0%	0%	0%	0%	1%
							grade 6 events	25202	25463	23905	23539	30839	132898
								13%	13%	12%	12%	14%	29%
							grade 7 events	15919	16542	16504	17107	17551	22800
								8%	8%	8%	8%	8%	5%

2.2 Compared Parameters

Parameter	Planned	Actual	Parameter	Planned	Actual
Instrument	ACIS	ACIS	Obspar format version number	7	7
Detector	ACIS-012367	ACIS-012367	Obspar file type	PREDICTED	ACTUAL
Grating	NONE	NONE	Obspar update status	NONE	UPDATED
Data mode	FAINT	FAINT	On-chip summing requested	N	N
Observation mode	SECONDARY	SECONDARY	Subarray requested	NONE	NONE
[deg] Pointing RA	0	355.1661522600053	Alternating exposures requested	N	N
[deg] Pointing Dec	0	38.57497618977057	[s] Primary exposure time	0.000000	3.2
[deg] Pointing Roll	0.0	317.3343610091035			
[mm] SIM focus pos	-0.782348	-0.6828225247311905			
[mm] SIM defocus	0	0.8505141146731063			
[mm] SIM translation stage pos	-233.592463	250.466033080201			
[mm] SIM translation stage offset	0	-0.01005468664627074			
[s] Observation start time (MET)	97312612.90800001	97312612.13933399			
Observation start date	2001-01-31T07:16:53	2001-01-31T07:16:52			
[s] Observation end time (MET)	97350460.009	97350459.24079099			
Observation end date	2001-01-31T17:47:40	2001-01-31T17:47:39			
Read mode	TIMED	TIMED			

2.3 Star Slots

2.4 FID Slots

A Summary

A.1 Status

V&V Scientist	Jen Lauer
V&V Date (YYYY-MM-DD)	2012.09.17
V&V Edition	1
V&V Disposition and Status	OK
V&V Charge Time	5.885448863104

A.2 Comments