

V&V Reference Report

L2 ASCDS Version : 8.4.5

Observation 61345 - L2 Version 3
Chandra X-Ray Center

L2 Processing Date : Oct 1 2012

Contents

1	Front	2
2	OBI	3
2.1	OBI	3
2.1.1	Images	3
2.1.2	Bias	3
2.1.3	Parameters	4
2.1.4	Events	4
2.2	Compared Parameters	5
2.3	Star Slots	6
2.4	FID Slots	6
A	Summary	7
A.1	Status	7
A.2	Comments	7

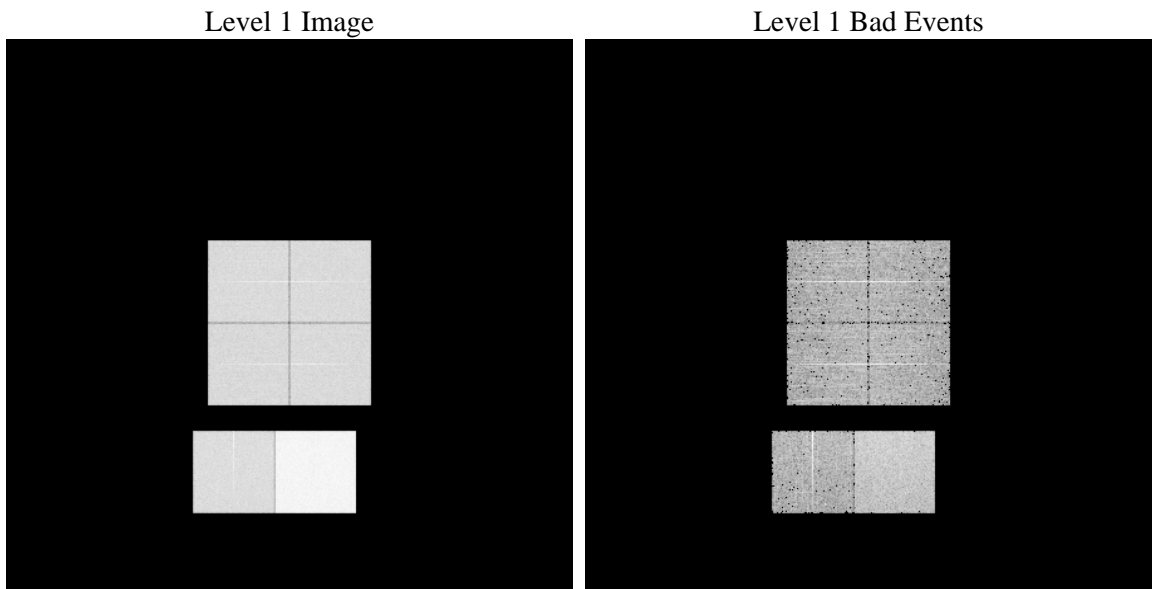
1 Front

seq_num	 	Sequence number
obs_id	61345	Observation id
title	ACIS-012367 diagnostics	Proposal title
observer	CHANDRA engineering request/realtime commanding	Principal investig
object	 	Source name
dtcycle	0	
cycle	P	events from which exps? Prim/Second/Both
ra_targ	0.0	Observer's specified target RA [deg]
dec_targ	0.0	Observer's specified target Dec [deg]
ra_nom	177.99700347345	Nominal RA [deg]
dec_nom	-5.9715355417209	Nominal Dec [deg]
roll_nom	63.222551407222	Nominal Roll [deg]
revision	3	Processing version of data
ontime	8182.4000076056	Sum of GTIs [s]
livetime	8078.7895318595	Livetime [s]
ontime0	3286.2243805528	Sum of GTIs [s]
ontime1	3262.595936656	Sum of GTIs [s]
ontime2	3036.7470189184	Sum of GTIs [s]
ontime3	3140.2965373397	Sum of GTIs [s]
ontime6	3386.8186940253	Sum of GTIs [s]
ontime7	8182.4000076056	Sum of GTIs [s]
l2events	1300683	Number of level 2 events

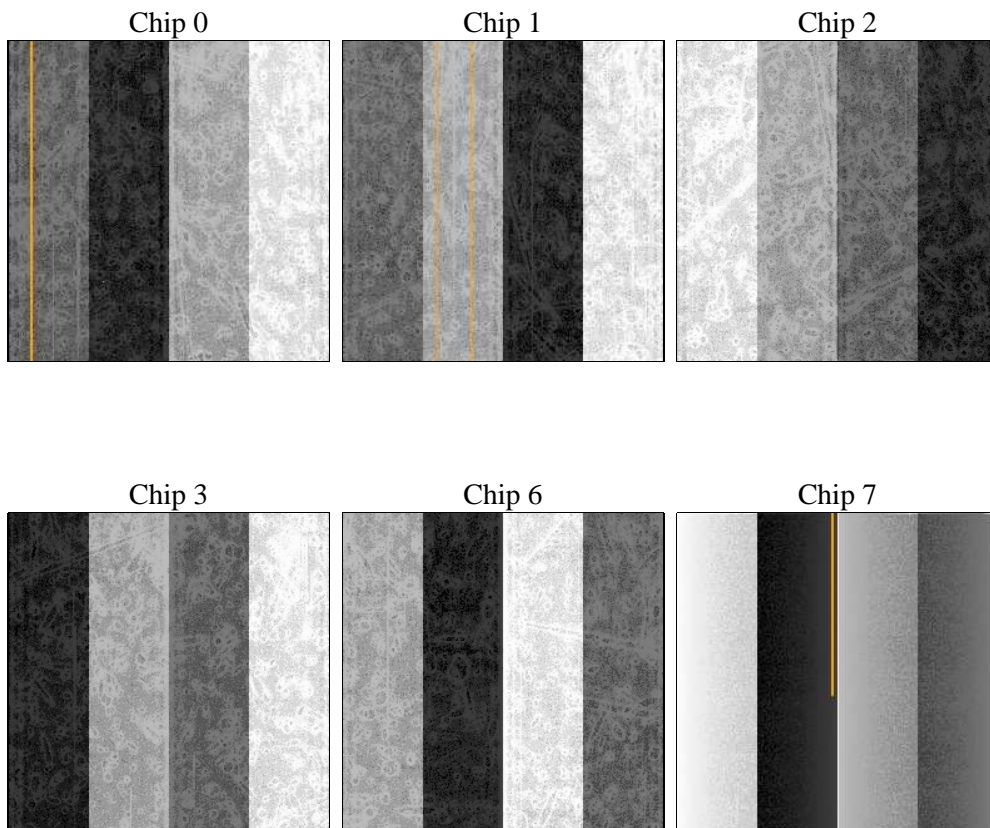
2 OBI

2.1 OBI

2.1.1 Images



2.1.2 Bias



2.1.3 Parameters

obi_num	0	Obi number	sched_exp_time	0.0	[s] Scheduled observation exposure time
ascdsver	8.4.5	Processing system revision	ontime	8182.4000076056	Sum of GTIs [s]
caldsver	4.5.2	 	ontime0	3286.2243805528	Sum of GTIs [s]
date	2012-10-01T05:06:49	Date and time of file creation	ontime1	3262.595936656	Sum of GTIs [s]
revision	3	Processing version of data	ontime2	3036.7470189184	Sum of GTIs [s]
			ontime3	3140.2965373397	Sum of GTIs [s]
			ontime6	3386.8186940253	Sum of GTIs [s]
			ontime7	8182.4000076056	Sum of GTIs [s]
			l1events	1535941	Number of level 1 events

2.1.4 Events

	ccd 0	ccd 1	ccd 2	ccd 3	ccd 6	ccd 7		ccd 0	ccd 1	ccd 2	ccd 3	ccd 6	ccd 7
level 1 events	204546	202824	193804	199111	221045	514611	grade 0 events	99936	98991	94181	97808	106939	119196
rejected events	25486	25051	26529	26497	27191	49997		48%	48%	48%	49%	48%	23%
rejected %	12%	12%	13%	13%	12%	9%	grade 1 events	533	508	486	531	523	288
								0%	0%	0%	0%	0%	0%
							grade 2 events	31939	31702	29955	30591	34268	103678
								15%	15%	15%	15%	15%	20%
							grade 3 events	11669	11494	10684	11164	12074	48088
								5%	5%	5%	5%	5%	9%
							grade 4 events	11455	11374	10718	10943	12143	47374
								5%	5%	5%	5%	5%	9%
							grade 5 events	1689	1723	1508	1792	1952	9011
								0%	0%	0%	0%	0%	1%
							grade 6 events	26539	26372	24303	24237	31236	152887
								12%	13%	12%	12%	14%	29%
							grade 7 events	20786	20660	21969	22045	21910	34089
								10%	10%	11%	11%	9%	6%

2.2 Compared Parameters

Parameter	Planned	Actual	Parameter	Planned	Actual
Instrument	ACIS	ACIS	Obspar format version number	7	7
Detector	ACIS-012367	ACIS-012367	Obspar file type	PREDICTED	ACTUAL
Grating	NONE	NONE	Obspar update status	NONE	UPDATED
Data mode	FAINT	FAINT	On-chip summing requested	N	N
Observation mode	SECONDARY	SECONDARY	Subarray requested	NONE	NONE
[deg] Pointing RA	0	177.9970034734453	Alternating exposures requested	N	N
[deg] Pointing Dec	0	-5.971535541720857	[s] Primary exposure time	3.2	3.2
[deg] Pointing Roll	0.0	63.22255140722243			
[mm] SIM focus pos	-0.782348	-0.6828225247311905			
[mm] SIM defocus	0	0.8505141146731063			
[mm] SIM translation stage pos	-233.592463	250.466033080201			
[mm] SIM translation stage offset	0	-0.01005468664627074			
[s] Observation start time (MET)	127734886.753291	127734885.98483			
Observation start date	2002-01-18T09:54:47	2002-01-18T09:54:45			
[s] Observation end time (MET)	127756196.504148	127756195.73569			
Observation end date	2002-01-18T15:49:57	2002-01-18T15:49:55			
Read mode	TIMED	TIMED			

2.3 Star Slots

2.4 FID Slots

A Summary

A.1 Status

V&V Scientist	Jen Lauer
V&V Date (YYYY-MM-DD)	2012.10.03
V&V Edition	1
V&V Disposition and Status	OK
V&V Charge Time	8.1824000076056

A.2 Comments