

V&V Reference Report

L2 ASCDS Version : 8.4.5

Observation 61265 - L2 Version 3
Chandra X-Ray Center

L2 Processing Date : Oct 4 2012

Contents

1	Front	2
2	OBI	3
2.1	OBI	3
2.1.1	Images	3
2.1.2	Bias	3
2.1.3	Parameters	4
2.1.4	Events	4
2.2	Compared Parameters	5
2.3	Star Slots	6
2.4	FID Slots	6
A	Summary	7
A.1	Status	7
A.2	Comments	7

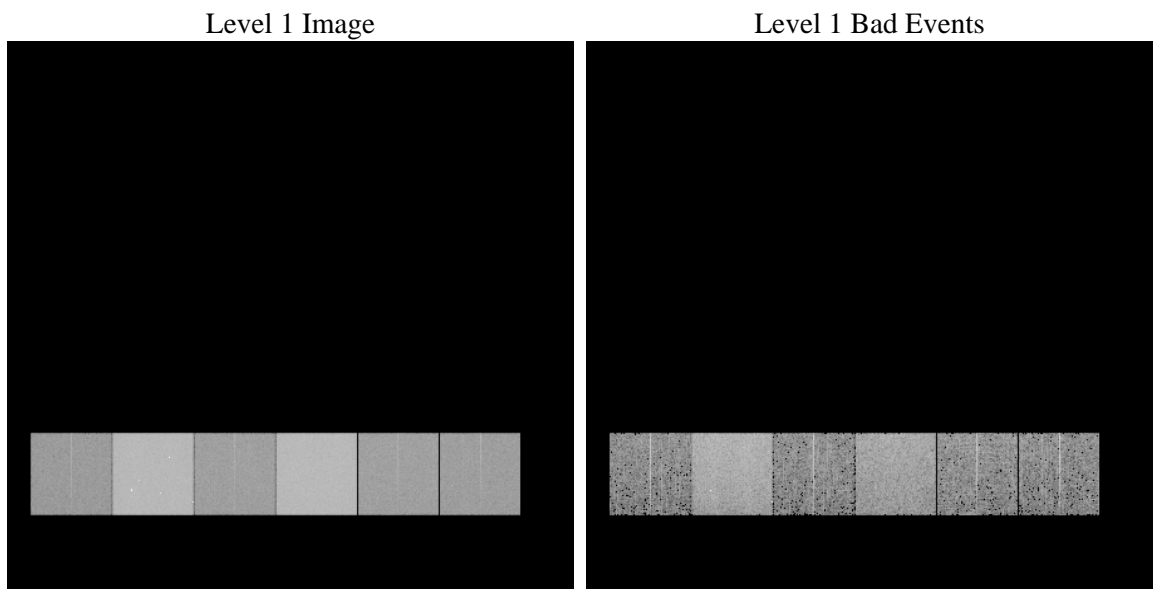
1 Front

seq_num	 	Sequence number
obs_id	61265	Observation id
title	ACIS-456789 diagnostics	Proposal title
observer	CHANDRA engineering request/realtime commanding	Principal investig
object	 	Source name
dtcycle	0	
cycle	P	events from which exps? Prim/Second/Both
ra_targ	0.0	Observer's specified target RA [deg]
dec_targ	0.0	Observer's specified target Dec [deg]
ra_nom	218.46776611967	Nominal RA [deg]
dec_nom	37.512877443091	Nominal Dec [deg]
roll_nom	120.49311382357	Nominal Roll [deg]
revision	3	Processing version of data
ontime	7310.2582410872	Sum of GTIs [s]
livetime	7217.6913495295	Livetime [s]
ontime4	2591.3742676675	Sum of GTIs [s]
ontime5	7857.9806578308	Sum of GTIs [s]
ontime6	2866.8624079823	Sum of GTIs [s]
ontime7	7310.2582410872	Sum of GTIs [s]
ontime8	2931.657772705	Sum of GTIs [s]
ontime9	2831.2109681368	Sum of GTIs [s]
l2events	1322026	Number of level 2 events

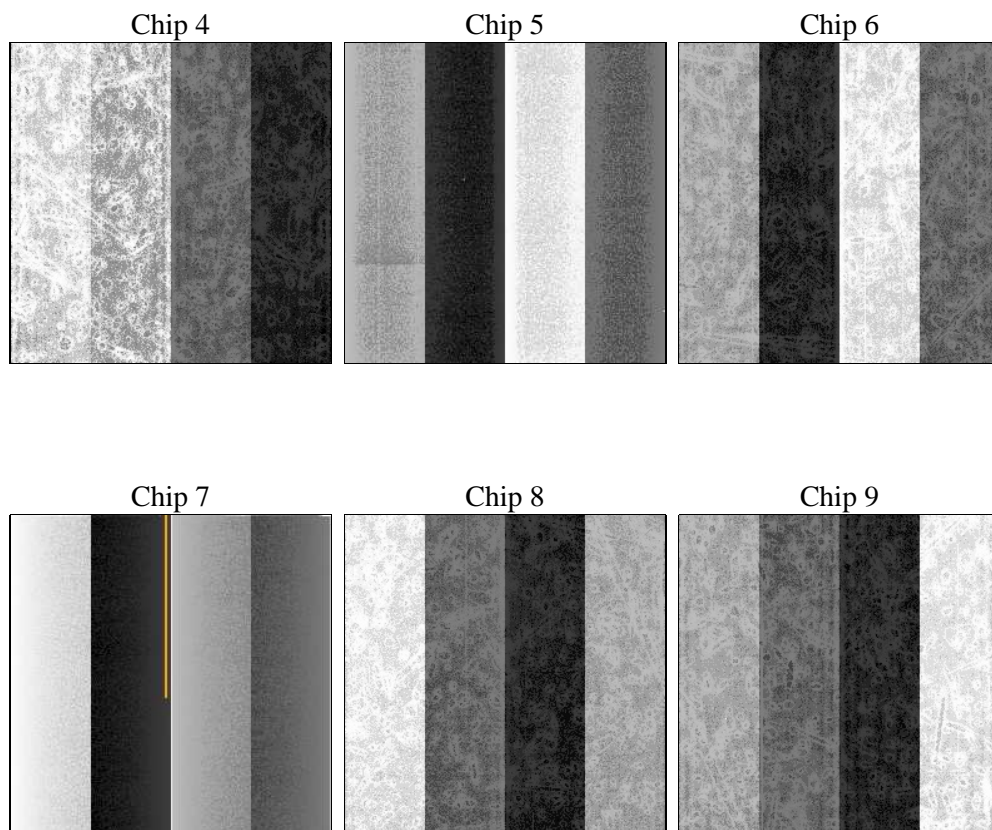
2 OBI

2.1 OBI

2.1.1 Images



2.1.2 Bias



2.1.3 Parameters

obi_num	2	Obi number	sched_exp_time	0.0	[s] Scheduled observation exposure time
ascdsver	8.4.5	Processing system revision	ontime	7310.2582410872	Sum of GTIs [s]
caldsver	4.5.2	 	ontime4	2591.3742676675	Sum of GTIs [s]
date	2012-10-04T06:22:54	Date and time of file creation	ontime5	7857.9806578308	Sum of GTIs [s]
revision	3	Processing version of data	ontime6	2866.8624079823	Sum of GTIs [s]
			ontime7	7310.2582410872	Sum of GTIs [s]
			ontime8	2931.657772705	Sum of GTIs [s]
			ontime9	2831.2109681368	Sum of GTIs [s]
			l1events	1570616	Number of level 1 events

2.1.4 Events

	ccd 4	ccd 5	ccd 6	ccd 7	ccd 8	ccd 9		ccd 4	ccd 5	ccd 6	ccd 7	ccd 8	ccd 9
level 1 events	153674	435509	180359	442662	186473	171939	grade 0 events	74268	89094	86224	101236	88807	81724
rejected events	22017	57675	22292	41409	24475	22246		48%	20%	47%	22%	47%	47%
rejected %	14%	13%	12%	9%	13%	12%	grade 1 events	405	517	414	275	433	398
								0%	0%	0%	0%	0%	0%
							grade 2 events	23443	136987	27495	88642	28785	26685
								15%	31%	15%	20%	15%	15%
							grade 3 events	8116	23277	9657	40651	10219	9403
								5%	5%	5%	9%	5%	5%
							grade 4 events	8076	23145	9717	40451	10334	9245
								5%	5%	5%	9%	5%	5%
							grade 5 events	1349	10673	1629	8141	1837	1582
								0%	2%	0%	1%	0%	0%
							grade 6 events	17754	105331	24974	130273	23853	22636
								11%	24%	13%	29%	12%	13%
							grade 7 events	20263	46485	20249	32993	22205	20266
								13%	10%	11%	7%	11%	11%

2.2 Compared Parameters

Parameter	Planned	Actual
Instrument	ACIS	ACIS
Detector	ACIS-456789	ACIS-456789
Grating	NONE	NONE
Data mode	FAINT	FAINT
Observation mode	SECONDARY	SECONDARY
[deg] Pointing RA	0	218.467766119669
[deg] Pointing Dec	0	37.5128774430914
[deg] Pointing Roll	0.0	120.4931138235651
[mm] SIM focus pos	-0.684267	-0.6828225247311905
[mm] SIM defocus	0	0.8505141146731063
[mm] SIM translation stage pos	-190.132523	250.466033080201
[mm] SIM translation stage offset	0	-0.01005468664627074
[s] Observation start time (MET)	132531317.04693	132531316.27847
Observation start date	2002-03-14T22:15:17	2002-03-14T22:15:16
[s] Observation end time (MET)	132554475.897867	132554475.12941
Observation end date	2002-03-15T04:41:16	2002-03-15T04:41:15
Read mode	TIMED	TIMED

Parameter	Planned	Actual
Obspar format version number	7	7
Obspar file type	PREDICTED	ACTUAL
Obspar update status	NONE	UPDATED
On-chip summing requested	N	N
Subarray requested	NONE	NONE
Alternating exposures requested	N	N
[s] Primary exposure time	3.2	3.2

2.3 Star Slots

2.4 FID Slots

A Summary

A.1 Status

V&V Scientist	Beth Sundheim
V&V Date (YYYY-MM-DD)	2012.10.05
V&V Edition	1
V&V Disposition and Status	OK
V&V Charge Time	7.3102582410872

A.2 Comments