

# V&V Reference Report

## L2 ASCDS Version : 7.6.9

Observation 60925 - L2 Version 001  
Chandra X-Ray Center

L2 Processing Date : Oct 15 2006

## Contents

<b>1</b>	<b>Front</b>	<b>2</b>
<b>2</b>	<b>OBI</b>	<b>3</b>
2.1	OBI . . . . .	3
2.1.1	Images . . . . .	3
2.1.2	Bias . . . . .	3
2.1.3	Parameters . . . . .	4
2.1.4	Events . . . . .	4
2.2	Compared Parameters . . . . .	5
2.3	Aspect . . . . .	6
2.4	Star Slots . . . . .	8
2.5	FID Slots . . . . .	8
<b>A</b>	<b>Summary</b>	<b>9</b>
A.1	Status . . . . .	9
A.2	Comments . . . . .	9

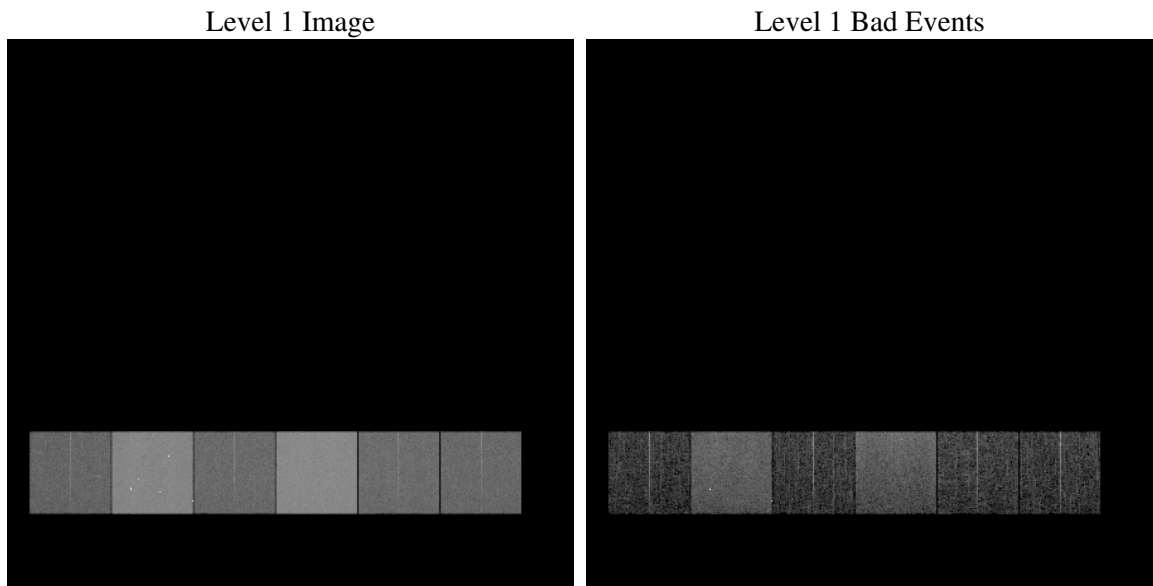
# 1 Front

seq_num	&#160
obs_id	60925
title	ACIS-456789 diagnostics
observer	CHANDRA engineering request/realtime commanding
object	&#160
dtcycle	0
cycle	P
ra_targ	0.0
dec_targ	0.0
ra_nom	124.6866620172
dec_nom	24.825899387871
roll_nom	82.1773057222
revision	2
ontime	8387.1999687552
livetime	8280.9961925854
ontime4	3189.4922190905
ontime5	8387.1999687552
ontime6	3455.2144065797
ontime7	8387.1999687552
ontime8	3567.857289046
ontime9	3412.9580160379
l2events	1248672

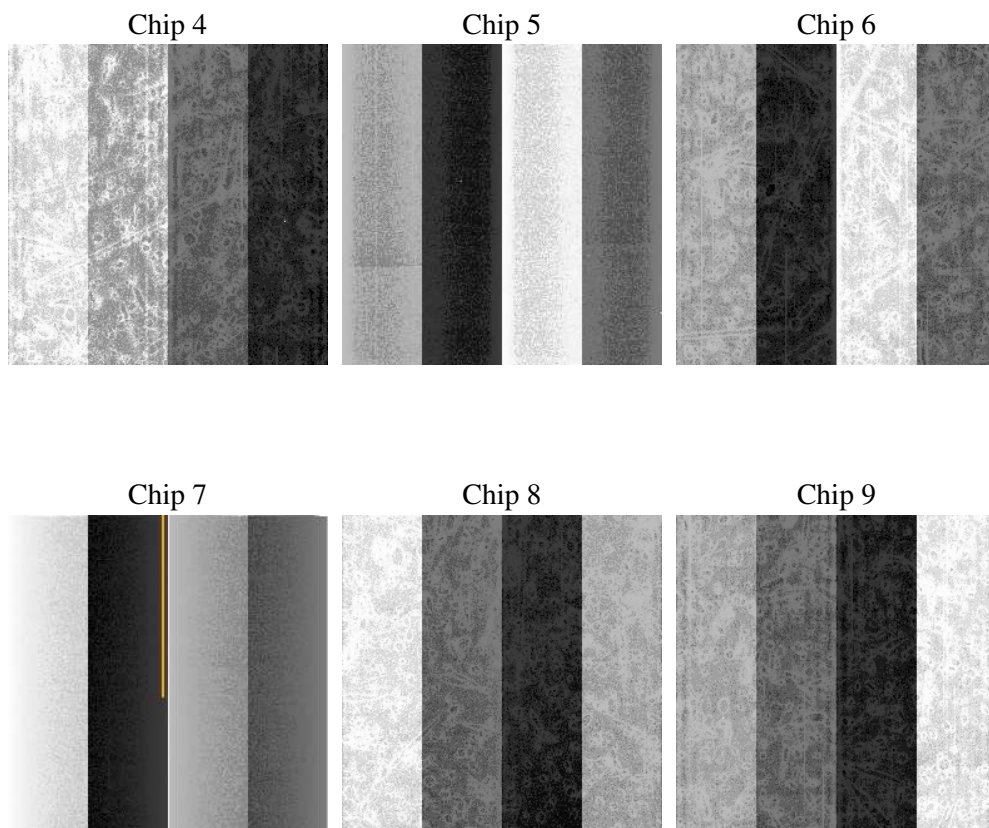
## 2 OBI

### 2.1 OBI

#### 2.1.1 Images



#### 2.1.2 Bias



### 2.1.3 Parameters

obi_num	0
ascdsver	7.6.9
caldsver	3.2.3
date	2006-10-15T07:47:55
revision	2

sched_exp_time	0.0
ontime	8462.2637028694
ontime4	3215.1075082123
ontime5	8462.2637028694
ontime6	3487.3527758718
ontime7	8462.2637028694
ontime8	3600.7882601023
ontime9	3445.2195451558
l1events	1546407

### 2.1.4 Events

	ccd 4	ccd 5	ccd 6	ccd 7	ccd 8	ccd 9
level 1 events	160584	401128	184336	431032	193040	176287
rejected events	24251	69717	26317	60988	28791	26051
rejected %	15%	17%	14%	14%	14%	14%

	ccd 4	ccd 5	ccd 6	ccd 7	ccd 8	ccd 9
grade 0 events	79496	42073	87402	67186	91530	84076
	49%	10%	47%	15%	47%	47%
grade 1 events	537	299	394	173	440	471
	0%	0%	0%	0%	0%	0%
grade 2 events	21793	160072	27474	112925	28807	25849
	13%	39%	14%	26%	14%	14%
grade 3 events	9229	10689	9797	27583	10713	9773
	5%	2%	5%	6%	5%	5%
grade 4 events	9232	10593	9876	26979	10536	9498
	5%	2%	5%	6%	5%	5%
grade 5 events	1545	7349	1745	7506	2062	1707
	0%	1%	0%	1%	1%	0%
grade 6 events	17672	110937	24961	138767	24122	22484
	11%	27%	13%	32%	12%	12%
grade 7 events	21080	59116	22687	49913	24830	22429
	13%	14%	12%	11%	12%	12%

## 2.2 Compared Parameters

Parameter	Planned	Actual	Parameter	Planned	Actual
Instrument	ACIS	ACIS	Obspar format version number	6	6
Detector	ACIS-456789	ACIS-456789	Obspar file type	PREDICTED	ACTUAL
Grating	NONE	NONE	Obspar update status	NONE	UPDATED
Data mode	FAINT	FAINT	On-chip summing requested	N	N
Observation mode	SECONDARY	SECONDARY	Subarray requested	NONE	NONE
Pointing RA	0	124.686662017195	Alternating exposures requested	N	N
Pointing Dec	0	24.82589938787083	Primary exposure time	0.000000	3.2
Pointing Roll	0.0	82.17730572219955			
SIM focus pos (mm)	-0.684267	-0.6828225247311905			
SIM defocus (mm)	0	0.8505141146731063			
SIM translation stage pos (mm)	-190.132523	250.466033080201			
SIM translation stage offset (mm)	0	-0.01005468664627074			
Observation start time	155840726.411613	155840725.38689			
Observation start date	2002-12-09T17:05:26	2002-12-09T17:05:25			
Observation end time	155862556.862525	155862555.8378			
Observation end date	2002-12-09T23:09:17	2002-12-09T23:09:15			
Read mode	TIMED	TIMED			

## 2.3 Aspect



## **2.4 Star Slots**

## **2.5 FID Slots**



## A Summary

### A.1 Status

V&V Scientist	Beth Sundheim
V&V Date (YYYY-MM-DD)	2006.10.15
V&V Edition	1
V&V Disposition and Status	OK
V&V Charge Time	8.38719996

### A.2 Comments