

V&V Reference Report

L2 ASCDS Version : 7.6.8

Observation 60805 - L2 Version 001
Chandra X-Ray Center

L2 Processing Date : Jul 26 2006

Contents

1	Front	2
2	OBI	3
2.1	OBI	3
2.1.1	Images	3
2.1.2	Bias	3
2.1.3	Parameters	4
2.1.4	Events	4
2.2	Compared Parameters	5
2.3	Aspect	6
2.4	Star Slots	8
2.5	FID Slots	8
A	Summary	9
A.1	Status	9
A.2	Comments	9

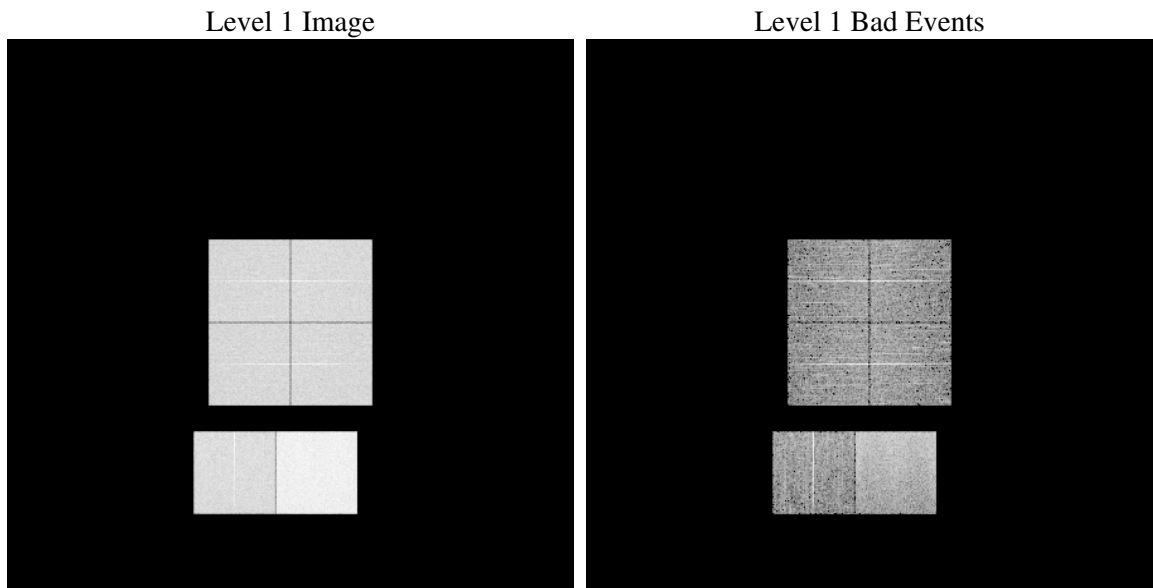
1 Front

seq_num	
obs_id	60805
title	ACIS-012367 diagnostics
observer	CHANDRA engineering request/realtime commanding
object	
dtcycle	0
cycle	P
ra_targ	0.0
dec_targ	0.0
ra_nom	160.00731418027
dec_nom	6.7723524247596
roll_nom	251.81907485285
revision	2
ontime	7796.9436707795
livetime	7698.2140752642
ontime0	4303.2026796937
ontime1	4439.3654190898
ontime2	4160.6808916032
ontime3	4179.9621451199
ontime6	4604.7381791472
ontime7	7796.9436707795
l2events	1168100

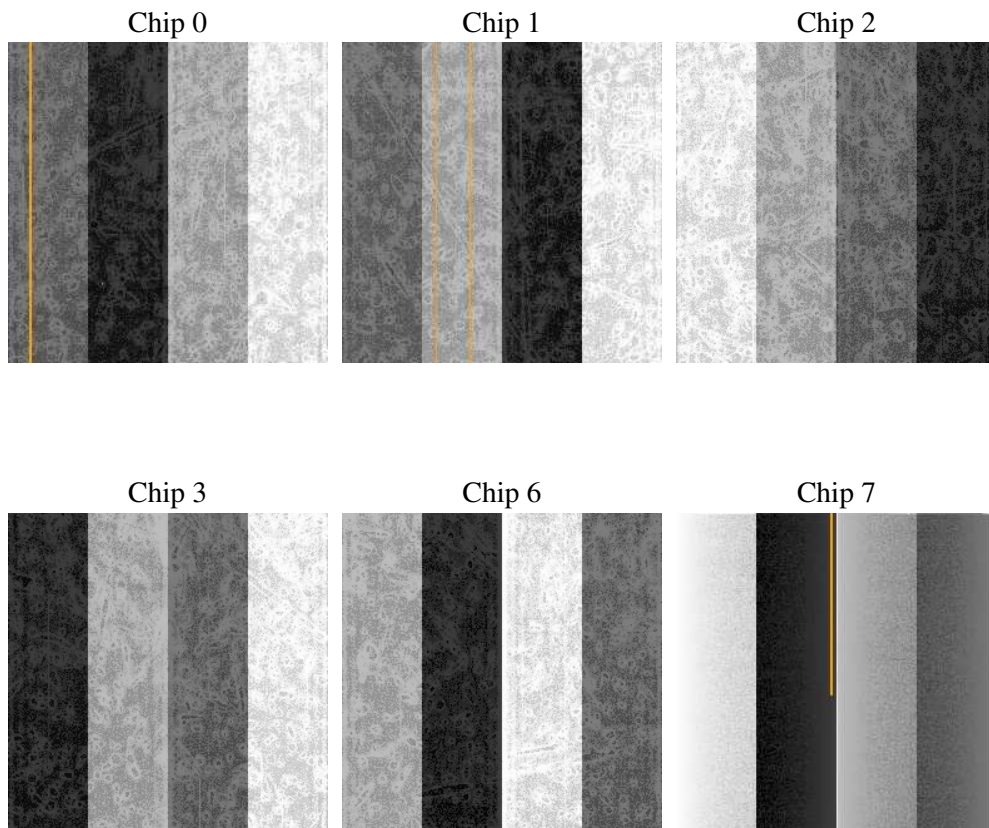
2 OBI

2.1 OBI

2.1.1 Images



2.1.2 Bias



2.1.3 Parameters

obi_num	0
ascdsver	7.6.8
caldsver	3.2.2
date	2006-07-26T05:38:58
revision	2

sched_exp_time	0.0
ontime	7797.8687985241
ontime0	4304.0867674351
ontime1	4440.2084668279
ontime2	4161.482899338
ontime3	4180.9283128679
ontime6	4605.4991469085
ontime7	7797.8687985241
l1events	1425198

2.1.4 Events

	ccd 0	ccd 1	ccd 2	ccd 3	ccd 6	ccd 7
level 1 events	204173	211511	201467	203094	227959	376994
rejected events	28755	29168	29815	30274	30687	54468
rejected %	14%	13%	14%	14%	13%	14%

	ccd 0	ccd 1	ccd 2	ccd 3	ccd 6	ccd 7
grade 0 events	96984	100595	96752	97175	108435	56514
	47%	47%	48%	47%	47%	14%
grade 1 events	569	472	562	518	479	143
	0%	0%	0%	0%	0%	0%
grade 2 events	30554	32019	28694	29558	33924	98631
	14%	15%	14%	14%	14%	26%
grade 3 events	11292	11583	11187	11312	12019	23251
	5%	5%	5%	5%	5%	6%
grade 4 events	11197	11613	11166	11220	12335	23030
	5%	5%	5%	5%	5%	6%
grade 5 events	1983	2016	1848	2043	2177	6872
	0%	0%	0%	1%	0%	1%
grade 6 events	25391	26533	23853	23555	30559	121100
	12%	12%	11%	11%	13%	32%
grade 7 events	26203	26680	27405	27713	28031	47453
	12%	12%	13%	13%	12%	12%

2.2 Compared Parameters

Parameter	Planned	Actual	Parameter	Planned	Actual
Instrument	ACIS	ACIS	Obspar format version number	6	6
Detector	ACIS-012367	ACIS-012367	Obspar file type	PREDICTED	ACTUAL
Grating	NONE	NONE	Obspar update status	NONE	UPDATED
Data mode	FAINT	FAINT	On-chip summing requested	N	N
Observation mode	SECONDARY	SECONDARY	Subarray requested	NONE	NONE
Pointing RA	0	160.0073141802709	Alternating exposures requested	N	N
Pointing Dec	0	6.772352424759617	Primary exposure time	0.000000	3.2
Pointing Roll	0.0	251.8190748528544			
SIM focus pos (mm)	-0.782348	-0.7809083437167272			
SIM defocus (mm)	0	0.7524282956875696			
SIM translation stage pos (mm)	-233.592463	250.466033080201			
SIM translation stage offset (mm)	0	-0.01005468664627074			
Observation start time	164710810.283527	164710809.25879			
Observation start date	2003-03-22T09:00:10	2003-03-22T09:00:09			
Observation end time	164746918.985051	164746917.96031			
Observation end date	2003-03-22T19:01:59	2003-03-22T19:01:57			
Read mode	TIMED	TIMED			

2.3 Aspect

2.4 Star Slots

2.5 FID Slots

A Summary

A.1 Status

V&V Scientist	Jen Lauer
V&V Date (YYYY-MM-DD)	2006.07.26
V&V Edition	1
V&V Disposition and Status	OK
V&V Charge Time	7.79694367

A.2 Comments