

# V&V Reference Report

## L2 ASCDS Version : 7.6.8

Observation 60575 - L2 Version 001  
Chandra X-Ray Center

L2 Processing Date : Jul 8 2006

## Contents

<b>1</b>	<b>Front</b>	<b>2</b>
<b>2</b>	<b>OBI</b>	<b>3</b>
2.1	OBI . . . . .	3
2.1.1	Images . . . . .	3
2.1.2	Bias . . . . .	3
2.1.3	Parameters . . . . .	4
2.1.4	Events . . . . .	4
2.2	Compared Parameters . . . . .	5
2.3	Aspect . . . . .	6
2.4	Star Slots . . . . .	8
2.5	FID Slots . . . . .	8
<b>A</b>	<b>Summary</b>	<b>9</b>
A.1	Status . . . . .	9
A.2	Comments . . . . .	9

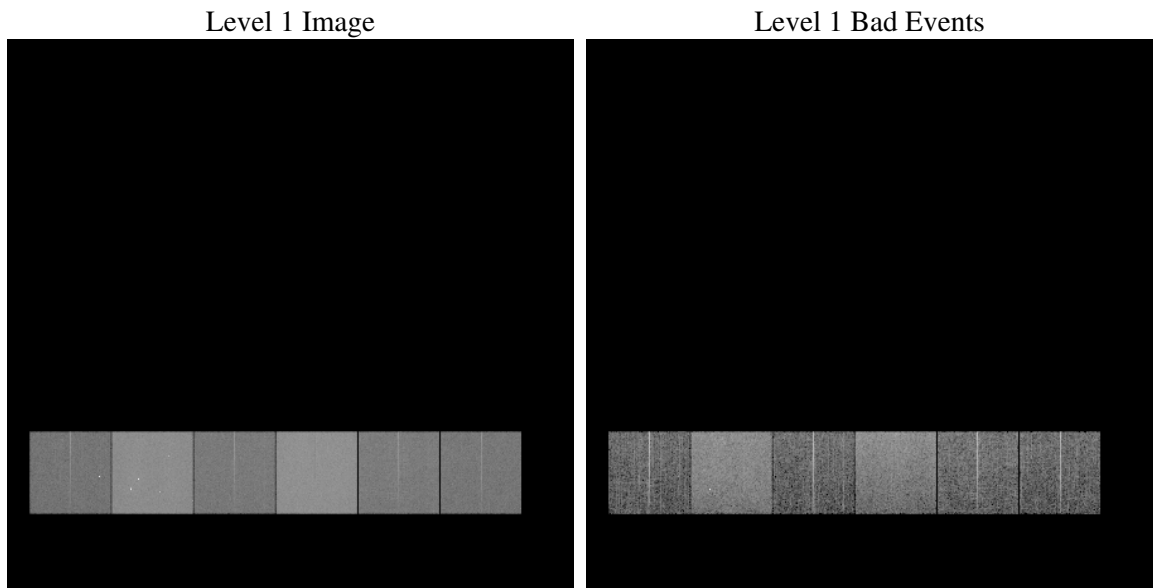
# 1 Front

seq_num	&#160
obs_id	60575
title	ACIS-456789 diagnostics
observer	CHANDRA engineering request/realtime commanding
object	&#160
dtcycle	0
cycle	P
ra_targ	0.0
dec_targ	0.0
ra_nom	26.996183754039
dec_nom	-55.971488884316
roll_nom	61.365278263536
revision	2
ontime	11326.63233611
livetime	11183.207697391
ontime4	5489.7527583539
ontime5	11326.673376113
ontime6	6040.683267802
ontime7	11326.63233611
ontime8	6147.7173667848
ontime9	5791.003067404
l2events	1638114

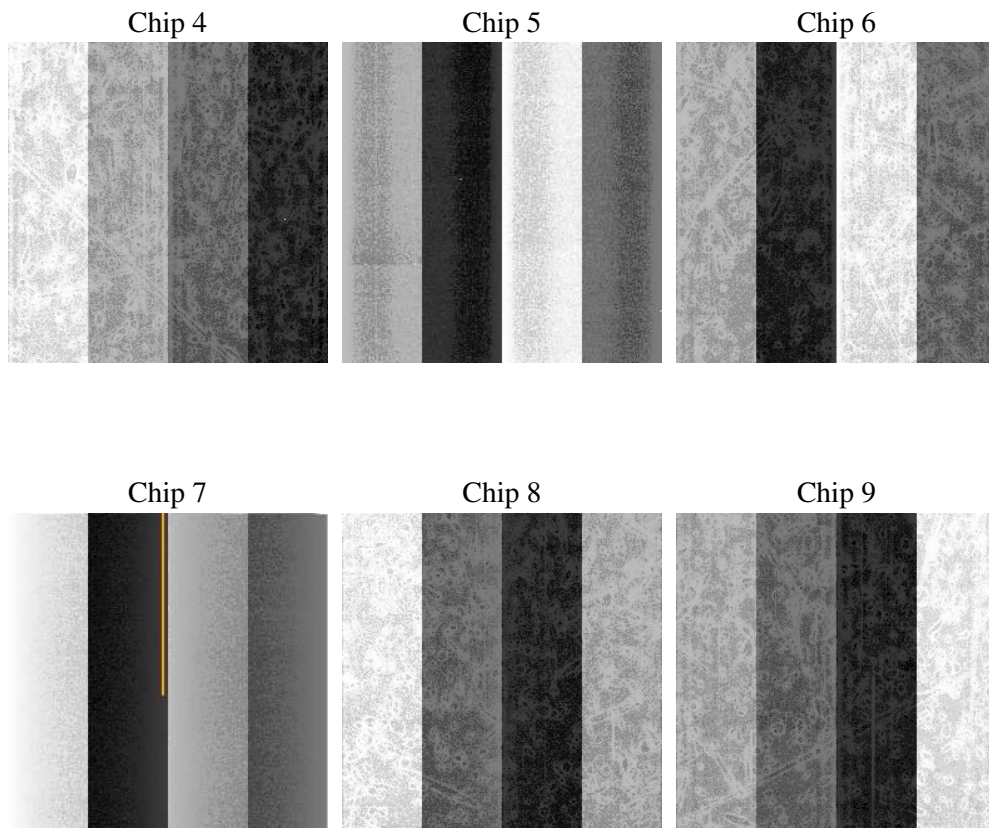
## 2 OBI

### 2.1 OBI

#### 2.1.1 Images



#### 2.1.2 Bias



### 2.1.3 Parameters

obi_num	0
ascdsver	7.6.8
caldbver	3.2.2
date	2006-07-08T03:34:01
revision	2

sched_exp_time	0.0
ontime	11327.306464523
ontime4	5490.3037667572
ontime5	11327.306464523
ontime6	6041.2753162086
ontime7	11327.306464523
ontime8	6148.2273352146
ontime9	5791.7182358205
l1events	2050650

### 2.1.4 Events

	ccd 4	ccd 5	ccd 6	ccd 7	ccd 8	ccd 9
level 1 events	242701	469494	278353	510009	291872	258221
rejected events	41132	83896	40926	73690	46796	39920
rejected %	16%	17%	14%	14%	16%	15%

	ccd 4	ccd 5	ccd 6	ccd 7	ccd 8	ccd 9
grade 0 events	117316	46945	129218	81740	134062	119709
	48%	9%	46%	16%	45%	46%
grade 1 events	827	153	626	181	649	629
	0%	0%	0%	0%	0%	0%
grade 2 events	31755	182505	41048	128982	42811	37722
	13%	38%	14%	25%	14%	14%
grade 3 events	13476	12659	14690	33389	15727	14029
	5%	2%	5%	6%	5%	5%
grade 4 events	13321	12500	14779	32556	15889	13916
	5%	2%	5%	6%	5%	5%
grade 5 events	2560	8983	2884	9567	3471	2885
	1%	1%	1%	1%	1%	1%
grade 6 events	25701	130989	37692	159652	36587	32925
	10%	27%	13%	31%	12%	12%
grade 7 events	37745	74760	37416	63942	42676	36406
	15%	15%	13%	12%	14%	14%

## 2.2 Compared Parameters

Parameter	Planned	Actual	Parameter	Planned	Actual
Instrument	ACIS	ACIS	Obspar format version number	6	6
Detector	ACIS-456789	ACIS-456789	Obspar file type	PREDICTED	ACTUAL
Grating	NONE	NONE	Obspar update status	NONE	UPDATED
Data mode	FAINT	FAINT	On-chip summing requested	N	N
Observation mode	SECONDARY	SECONDARY	Subarray requested	NONE	NONE
Pointing RA	0	26.99618375403915	Alternating exposures requested	N	N
Pointing Dec	0	-55.9714888843162	Primary exposure time	0.000000	3.2
Pointing Roll	0.0	61.36527826353613			
SIM focus pos (mm)	-0.684267	-1.038866356238299			
SIM defocus (mm)	0	0.4944702831659975			
SIM translation stage pos (mm)	-190.132523	250.4635187648994			
SIM translation stage offset (mm)	0	-0.007540371344731511			
Observation start time	178415538.51541	178415537.49068			
Observation start date	2003-08-27T23:52:19	2003-08-27T23:52:17			
Observation end time	178456386.817159	178456385.79243			
Observation end date	2003-08-28T11:13:07	2003-08-28T11:13:05			
Read mode	TIMED	TIMED			

## 2.3 Aspect



## **2.4 Star Slots**

## **2.5 FID Slots**



## A Summary

### A.1 Status

V&V Scientist	Jen Lauer
V&V Date (YYYY-MM-DD)	2006.07.10
V&V Edition	1
V&V Disposition and Status	OK
V&V Charge Time	11.3266323

### A.2 Comments