

V&V Reference Report

L2 ASCDS Version : 8.4.5

Observation 60435 - L2 Version 3
Chandra X-Ray Center

L2 Processing Date : Nov 9 2012

Contents

1	Front	2
2	OBI	3
2.1	OBI	3
2.1.1	Images	3
2.1.2	Bias	3
2.1.3	Parameters	4
2.1.4	Events	4
2.2	Compared Parameters	5
2.3	Star Slots	6
2.4	FID Slots	6
A	Summary	7
A.1	Status	7
A.2	Comments	7

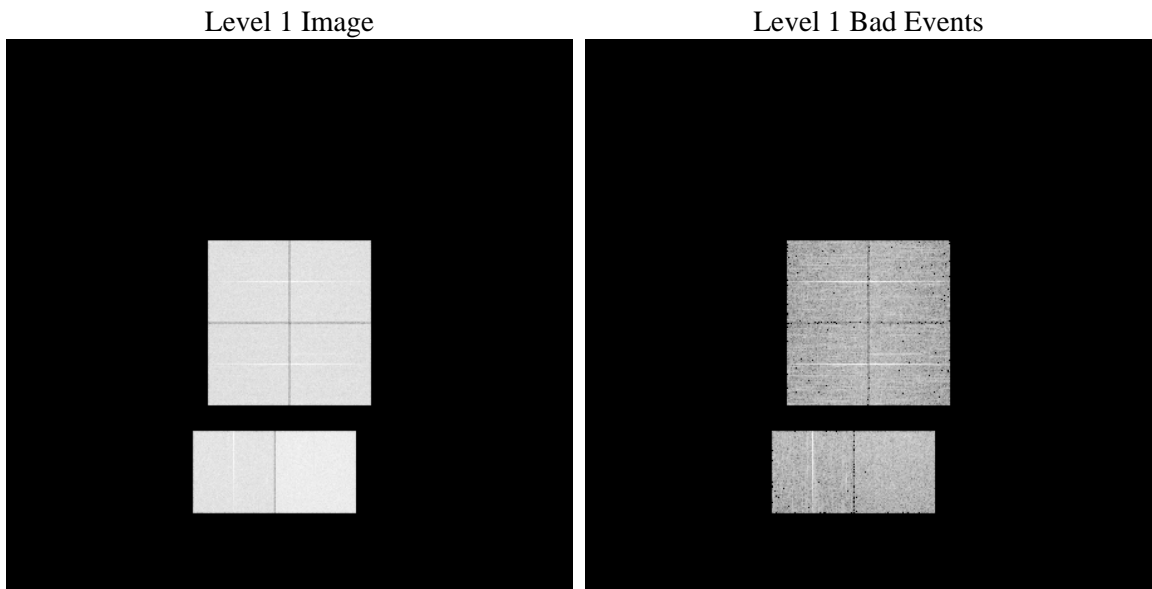
1 Front

seq_num	 	Sequence number
obs_id	60435	Observation id
title	ACIS-012367 diagnostics	Proposal title
observer	CHANDRA engineering request/realtime commanding	Principal investig
object	 	Source name
dtcycle	0	
cycle	P	events from which exps? Prim/Second/Both
ra_targ	0.0	Observer's specified target RA [deg]
dec_targ	0.0	Observer's specified target Dec [deg]
ra_nom	128.95896000906	Nominal RA [deg]
dec_nom	49.009692647491	Nominal Dec [deg]
roll_nom	127.35797788687	Nominal Roll [deg]
revision	3	Processing version of data
ontime	8467.1999684572	Sum of GTIs [s]
livetime	8359.9831841209	Livetime [s]
ontime0	5877.658780545	Sum of GTIs [s]
ontime1	5988.8068708181	Sum of GTIs [s]
ontime2	5582.7282919884	Sum of GTIs [s]
ontime3	5786.911182344	Sum of GTIs [s]
ontime6	6202.7934583426	Sum of GTIs [s]
ontime7	8467.1999684572	Sum of GTIs [s]
l2events	1248483	Number of level 2 events

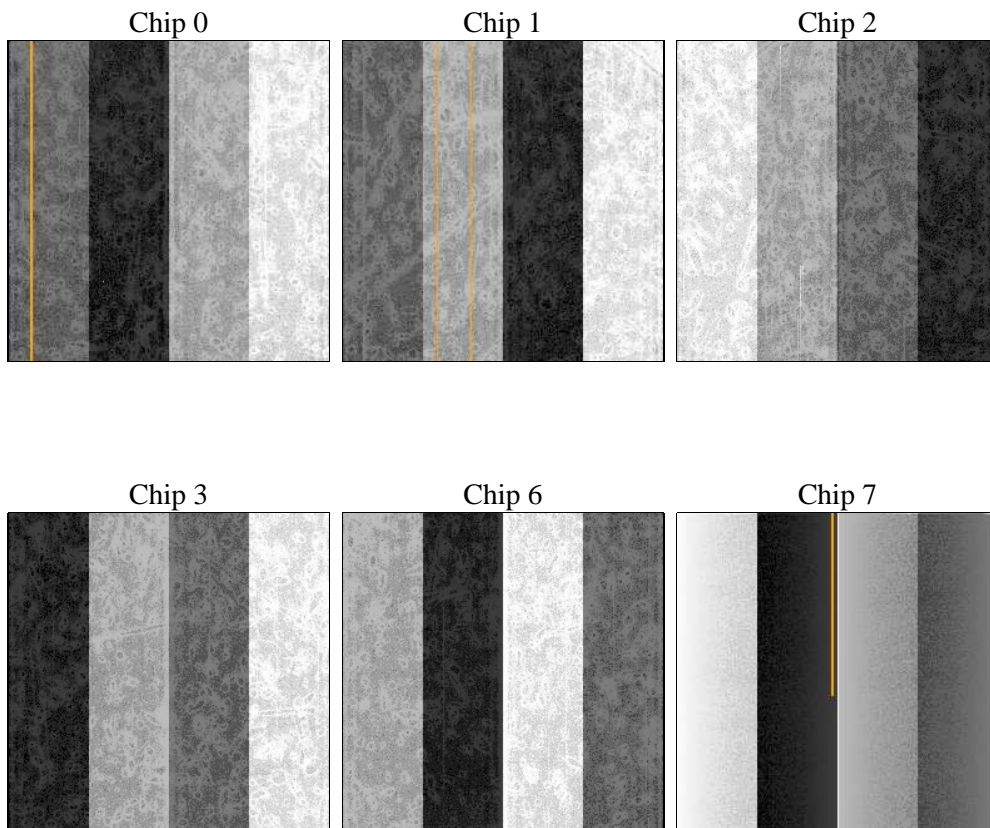
2 OBI

2.1 OBI

2.1.1 Images



2.1.2 Bias



2.1.3 Parameters

obi_num	0	Obi number	sched_exp_time	0.0	[s] Scheduled observation exposure time
ascdsver	8.4.5	Processing system revision	ontime	8467.1999684572	Sum of GTIs [s]
caldbver	4.5.2	 	ontime0	5877.658780545	Sum of GTIs [s]
date	2012-11-09T18:30:35	Date and time of file creation	ontime1	5988.8068708181	Sum of GTIs [s]
revision	3	Processing version of data	ontime2	5582.7282919884	Sum of GTIs [s]
			ontime3	5786.911182344	Sum of GTIs [s]
			ontime6	6202.7934583426	Sum of GTIs [s]
			ontime7	8467.1999684572	Sum of GTIs [s]
			l1events	1536275	Number of level 1 events

2.1.4 Events

	ccd 0	ccd 1	ccd 2	ccd 3	ccd 6	ccd 7		ccd 0	ccd 1	ccd 2	ccd 3	ccd 6	ccd 7
level 1 events	231583	238255	225873	234473	257986	348105	grade 0 events	108668	111191	106046	111248	119070	75218
rejected events	34715	35895	36720	37414	39298	43804		46%	46%	46%	47%	46%	21%
rejected %	14%	15%	16%	15%	15%	12%	grade 1 events	566	535	614	614	544	205
								0%	0%	0%	0%	0%	0%
							grade 2 events	34384	35775	32175	33460	37404	66800
								14%	15%	14%	14%	14%	19%
							grade 3 events	12880	13043	12213	12858	13655	30501
								5%	5%	5%	5%	5%	8%
							grade 4 events	12639	12699	12265	12652	13720	30340
								5%	5%	5%	5%	5%	8%
							grade 5 events	2415	2606	2302	2596	2757	8146
								1%	1%	1%	1%	1%	2%
							grade 6 events	28297	29652	26454	26841	34839	101442
								12%	12%	11%	11%	13%	29%
							grade 7 events	31734	32754	33804	34204	35997	35453
								13%	13%	14%	14%	13%	10%

2.2 Compared Parameters

Parameter	Planned	Actual
Instrument	ACIS	ACIS
Detector	ACIS-012367	ACIS-012367
Grating	NONE	NONE
Data mode	FAINT	FAINT
Observation mode	SECONDARY	SECONDARY
[deg] Pointing RA	0	128.9589600090559
[deg] Pointing Dec	0	49.00969264749077
[deg] Pointing Roll	0.0	127.3579778868704
[mm] SIM focus pos	-0.782348	-0.7809083437167272
[mm] SIM defocus	0	0.7524282956875696
[mm] SIM translation stage pos	-233.592463	250.466033080201
[mm] SIM translation stage offset	0	-0.01005468664627074
[s] Observation start time (MET)	189199611.130697	189199610.10598
Observation start date	2003-12-30T19:26:51	2003-12-30T19:26:50
[s] Observation end time (MET)	189220920.881624	189220919.85691
Observation end date	2003-12-31T01:22:01	2003-12-31T01:21:59
Read mode	TIMED	TIMED

Parameter	Planned	Actual
Obspar format version number	7	7
Obspar file type	PREDICTED	ACTUAL
Obspar update status	NONE	UPDATED
On-chip summing requested	N	N
Subarray requested	NONE	NONE
Alternating exposures requested	N	N
[s] Primary exposure time	0.000000	3.2

2.3 Star Slots

2.4 FID Slots

A Summary

A.1 Status

V&V Scientist	Beth Sundheim
V&V Date (YYYY-MM-DD)	2012.12.17
V&V Edition	1
V&V Disposition and Status	OK
V&V Charge Time	8.4671999684572

A.2 Comments