

# V&V Reference Report

## L2 ASCDS Version : 7.6.7.2

Observation 60405 - L2 Version 001  
Chandra X-Ray Center

L2 Processing Date : Jun 7 2006

## Contents

<b>1</b>	<b>Front</b>	<b>2</b>
<b>2</b>	<b>OBI</b>	<b>3</b>
2.1	OBI . . . . .	3
2.1.1	Images . . . . .	3
2.1.2	Bias . . . . .	3
2.1.3	Parameters . . . . .	4
2.1.4	Events . . . . .	4
2.2	Compared Parameters . . . . .	5
2.3	Aspect . . . . .	6
2.4	Star Slots . . . . .	8
2.5	FID Slots . . . . .	8
<b>A</b>	<b>Summary</b>	<b>9</b>
A.1	Status . . . . .	9
A.2	Comments . . . . .	9

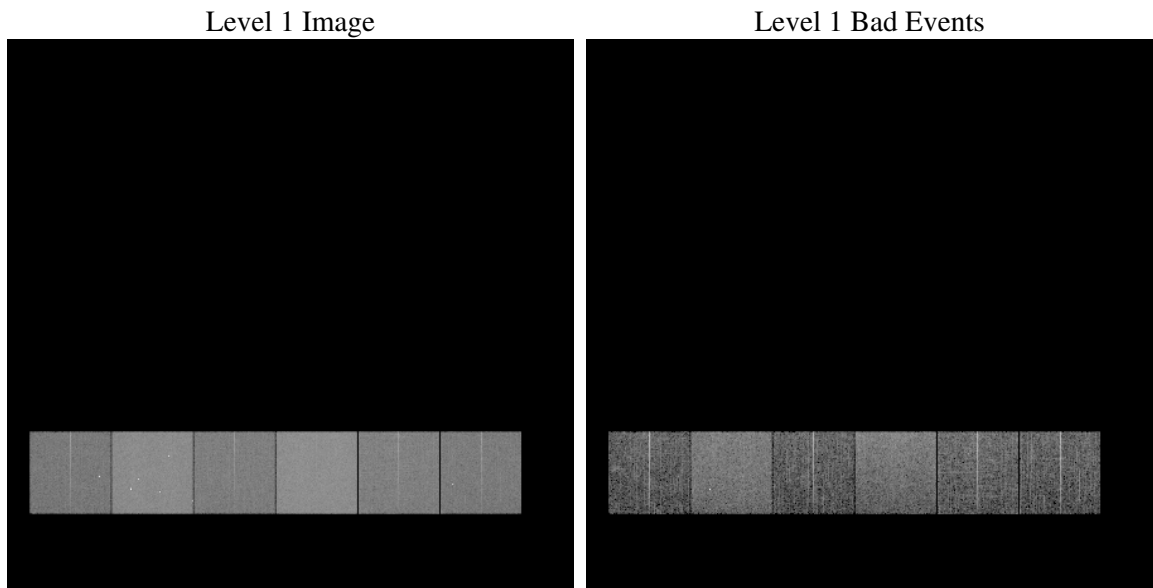
# 1 Front

seq_num	&#160
obs_id	60405
title	ACIS-456789 diagnostics
observer	CHANDRA engineering request/realtime commanding
object	&#160
dtcycle	0
cycle	P
ra_targ	0.0
dec_targ	0.0
ra_nom	135.01224968083
dec_nom	0.025828037456666
roll_nom	31.766763707115
revision	2
ontime	7800.3407392204
livetime	7701.5681279791
ontime4	4565.960801065
ontime5	7803.6227793992
ontime6	5019.6590099335
ontime7	7800.3407392204
ontime8	5123.4522702396
ontime9	4701.9179907143
l2events	1104517

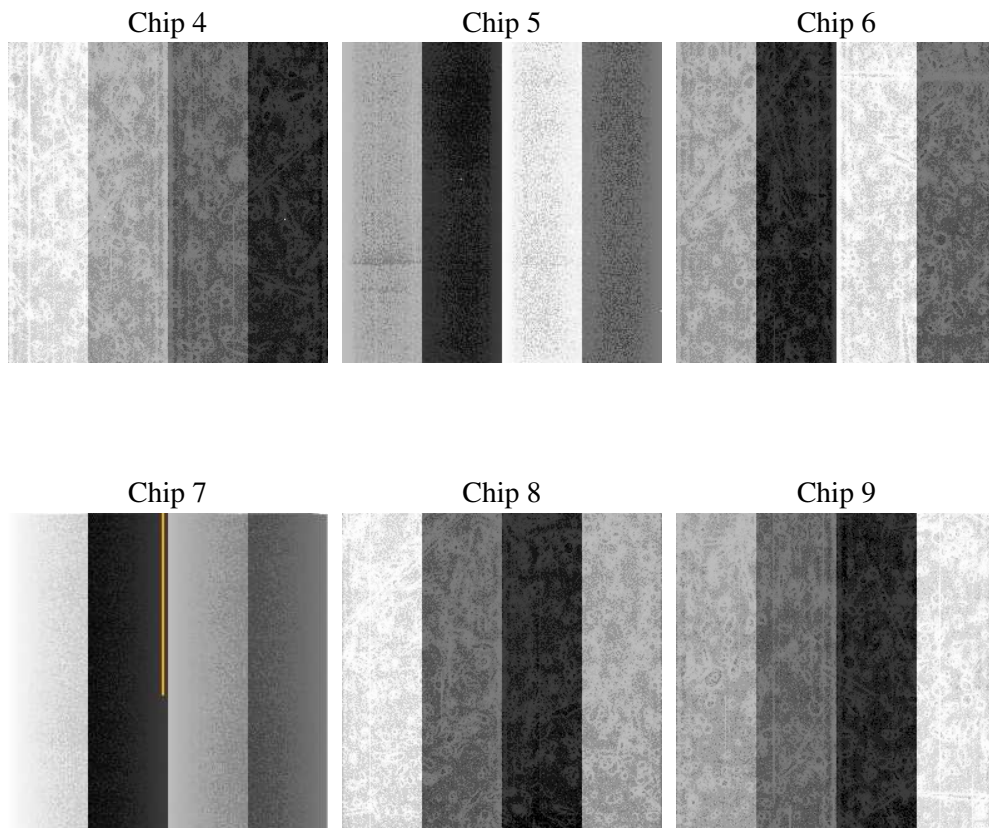
## 2 OBI

### 2.1 OBI

#### 2.1.1 Images



#### 2.1.2 Bias



### 2.1.3 Parameters

obi_num	0
ascdsver	7.6.7.2
caldbver	3.2.2
date	2006-06-07T08:54:36
revision	2

sched_exp_time	0.0
ontime	7801.1093901396
ontime4	4566.6063319743
ontime5	7804.3503903151
ontime6	5020.3455808461
ontime7	7801.1093901396
ontime8	5124.0567611754
ontime9	4702.7276816368
l1events	1416231

### 2.1.4 Events

	ccd 4	ccd 5	ccd 6	ccd 7	ccd 8	ccd 9
level 1 events	180077	297968	207377	319028	220138	191643
rejected events	32749	57899	32945	52431	38789	33885
rejected %	18%	19%	15%	16%	17%	17%

	ccd 4	ccd 5	ccd 6	ccd 7	ccd 8	ccd 9
grade 0 events	86021	28336	95058	47146	99052	87391
	47%	9%	45%	14%	44%	45%
grade 1 events	599	107	437	105	456	540
	0%	0%	0%	0%	0%	0%
grade 2 events	22984	114078	30616	80972	31897	26873
	12%	38%	14%	25%	14%	14%
grade 3 events	9803	7637	10645	19473	11707	10002
	5%	2%	5%	6%	5%	5%
grade 4 events	9858	7400	10799	19111	11855	10014
	5%	2%	5%	5%	5%	5%
grade 5 events	1955	5919	2349	6523	2848	2351
	1%	1%	1%	2%	1%	1%
grade 6 events	18662	82618	27314	99895	26838	23478
	10%	27%	13%	31%	12%	12%
grade 7 events	30195	51873	30159	45803	35485	30994
	16%	17%	14%	14%	16%	16%

## 2.2 Compared Parameters

Parameter	Planned	Actual	Parameter	Planned	Actual
Instrument	ACIS	ACIS	Obspar format version number	6	6
Detector	ACIS-456789	ACIS-456789	Obspar file type	PREDICTED	ACTUAL
Grating	NONE	NONE	Obspar update status	NONE	UPDATED
Data mode	FAINT	FAINT	On-chip summing requested	N	N
Observation mode	SECONDARY	SECONDARY	Subarray requested	NONE	NONE
Pointing RA	0	135.0122496808304	Alternating exposures requested	N	N
Pointing Dec	0	0.02582803745666629	Primary exposure time	0.000000	3.2
Pointing Roll	0.0	31.76676370711511			
SIM focus pos (mm)	-0.684267	-0.6828225247311905			
SIM defocus (mm)	0	0.8505141146731063			
SIM translation stage pos (mm)	-190.132523	250.466033080201			
SIM translation stage offset (mm)	0	-0.01005468664627074			
Observation start time	190984365.808424	190984364.78371			
Observation start date	2004-01-20T11:12:46	2004-01-20T11:12:44			
Observation end time	191004910.90932	191004909.8846			
Observation end date	2004-01-20T16:55:11	2004-01-20T16:55:09			
Read mode	TIMED	TIMED			

## 2.3 Aspect



## 2.4 Star Slots

## 2.5 FID Slots



## A Summary

### A.1 Status

V&V Scientist	Jen Lauer
V&V Date (YYYY-MM-DD)	2006.06.07
V&V Edition	1
V&V Disposition and Status	OK
V&V Charge Time	7.80034073

### A.2 Comments