

V&V Reference Report

L2 ASCDS Version : 7.6.7

Observation 59805 - L2 Version 002
Chandra X-Ray Center

L2 Processing Date: Feb 22 2006

Contents

1	Front	2
2	OBI	3
2.1	OBI	3
2.1.1	Images	3
2.1.2	Bias	3
2.1.3	Parameters	4
2.1.4	Events	4
2.2	Compared Parameters	5
2.3	Aspect	6
2.4	Star Slots	8
2.5	FID Slots	8
A	Summary	9
A.1	Status	9
A.2	Comments	9

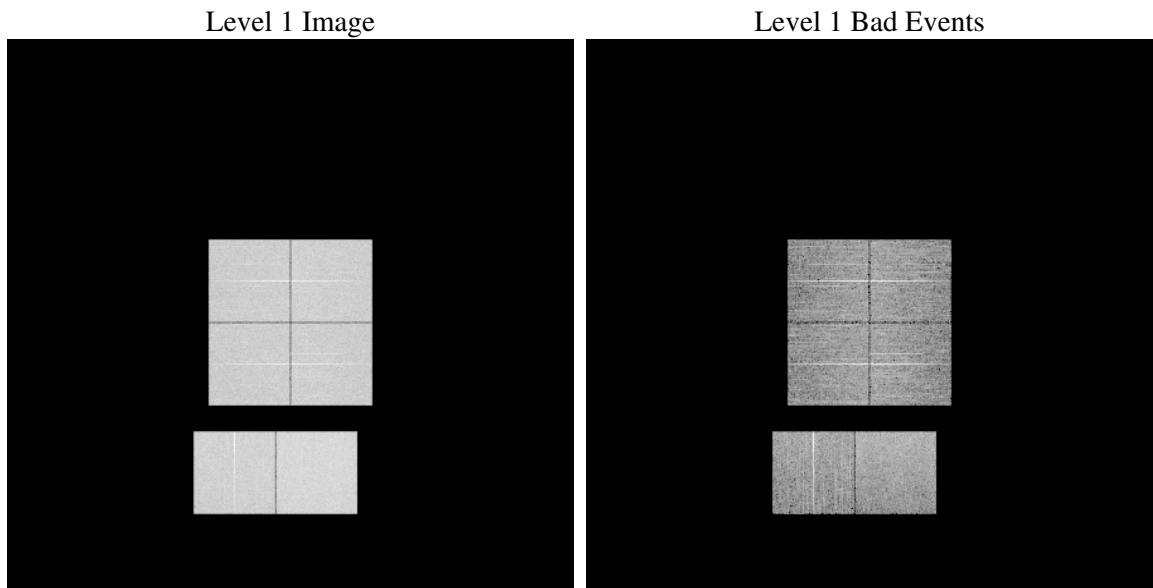
1 Front

seq_num	
obs_id	59805
title	ACIS-012367 diagnostics
observer	CHANDRA engineering request/realtime commanding
object	
dtcycle	0
cycle	P
ra_targ	0.0
dec_targ	0.0
ra_nom	166.96932313207
dec_nom	30.010568984778
roll_nom	125.41684234139
revision	2
ontime	7804.4860472083
livetime	7705.6609455812
ontime0	6537.3042919934
ontime1	6741.5270006955
ontime2	6375.3368806541
ontime3	6401.100861311
ontime6	6851.802330941
ontime7	7804.4860472083
l2events	1060867

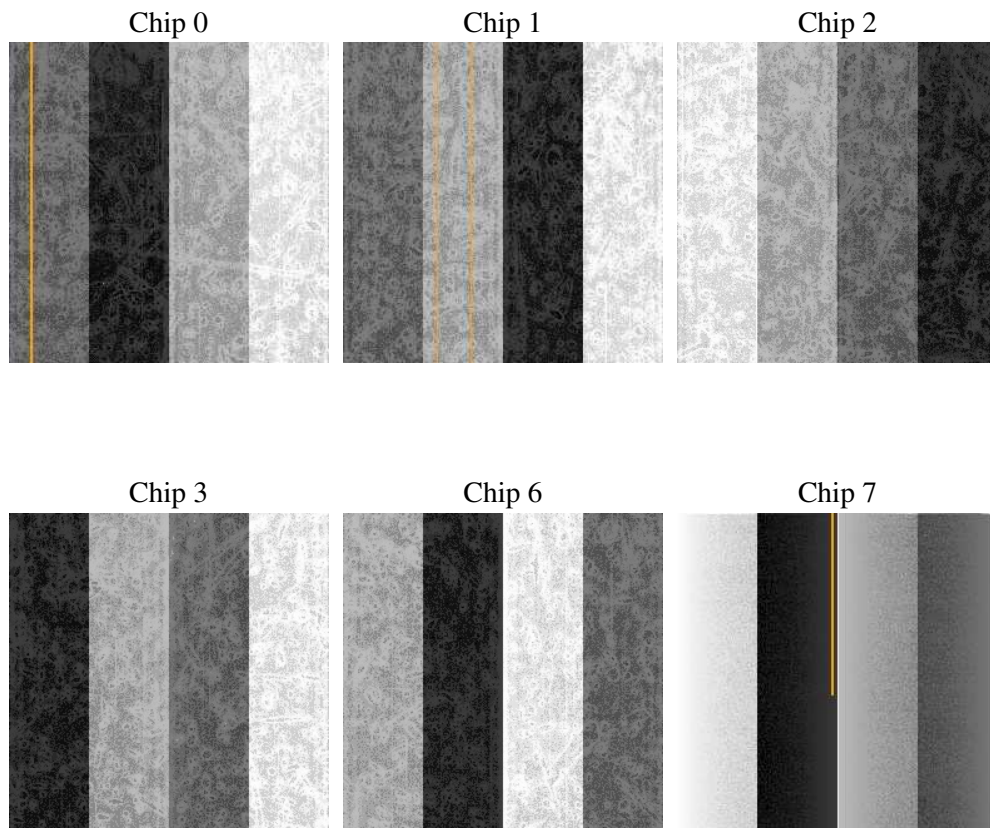
2 OBI

2.1 OBI

2.1.1 Images



2.1.2 Bias



2.1.3 Parameters

obi_num	1
ascdsver	7.6.7
caldsver	3.2.1
date	2006-02-23T02:30:32
revision	2

sched_exp_time	0.0
ontime	7807.5896830857
ontime0	6540.3668878675
ontime1	6744.5485565662
ontime2	6378.3173965216
ontime3	6404.2455371916
ontime6	6854.7418068349
ontime7	7807.5896830857
l1events	1412018

2.1.4 Events

	ccd 0	ccd 1	ccd 2	ccd 3	ccd 6	ccd 7
level 1 events	220789	229454	218691	222166	243946	276972
rejected events	45547	47487	47105	47965	51454	57801
rejected %	20%	20%	21%	21%	21%	20%

	ccd 0	ccd 1	ccd 2	ccd 3	ccd 6	ccd 7
grade 0 events	96268	98174	95886	97880	103134	35242
	43%	42%	43%	44%	42%	12%
grade 1 events	549	473	596	607	493	97
	0%	0%	0%	0%	0%	0%
grade 2 events	30606	33290	28507	29382	33839	69168
	13%	14%	13%	13%	13%	24%
grade 3 events	11436	11488	11171	11021	11773	14330
	5%	5%	5%	4%	4%	5%
grade 4 events	11091	11280	11213	11183	11737	14214
	5%	4%	5%	5%	4%	5%
grade 5 events	2906	3015	2698	2956	3190	6410
	1%	1%	1%	1%	1%	2%
grade 6 events	25929	27815	24903	24819	32097	86282
	11%	12%	11%	11%	13%	31%
grade 7 events	42004	43919	43717	44318	47683	51229
	19%	19%	19%	19%	19%	18%

2.2 Compared Parameters

Parameter	Planned	Actual	Parameter	Planned	Actual
Instrument	ACIS	ACIS	Obspar format version number	6	6
Detector	ACIS-012367	ACIS-012367	Obspar file type	PREDICTED	ACTUAL
Grating	NONE	NONE	Obspar update status	NONE	UPDATED
Data mode	FAINT	FAINT	On-chip summing requested	N	N
Observation mode	SECONDARY	SECONDARY	Subarray requested	NONE	NONE
Pointing RA	0	166.969323132068	Alternating exposures requested	N	N
Pointing Dec	0	30.01056898477815	Primary exposure time	3.2	3.2
Pointing Roll	0.0	125.4168423413882			
SIM focus pos (mm)	-0.782348	-0.7809083437167272			
SIM defocus (mm)	0	0.7524282956875696			
SIM translation stage pos (mm)	-233.592463	250.4635187648994			
SIM translation stage offset (mm)	0	-0.007540371344731511			
Observation start time	224572385.251676	224572384.22668			
Observation start date	2005-02-12T05:13:05	2005-02-12T05:13:04			
Observation end time	224609826.453369	224609825.42837			
Observation end date	2005-02-12T15:37:06	2005-02-12T15:37:05			
Read mode	TIMED	TIMED			

2.3 Aspect

2.4 Star Slots

2.5 FID Slots

A Summary

A.1 Status

V&V Scientist	Jen Lauer
V&V Date (YYYY-MM-DD)	2006.02.23
V&V Edition	1
V&V Disposition and Status	OK
V&V Charge Time	7.80448604

A.2 Comments

The temperature exceeds the calibration limits (-118 degrees) for the entire observation.