

V&V Reference Report

L2 ASCDS Version : 7.6.7.1

Observation 59645 - L2 Version 002
Chandra X-Ray Center

L2 Processing Date : Mar 8 2006

Contents

1	Front	2
2	OBI	3
2.1	OBI	3
2.1.1	Images	3
2.1.2	Bias	3
2.1.3	Parameters	4
2.1.4	Events	4
2.2	Compared Parameters	5
2.3	Aspect	6
2.4	Star Slots	8
2.5	FID Slots	8
A	Summary	9
A.1	Status	9
A.2	Comments	9

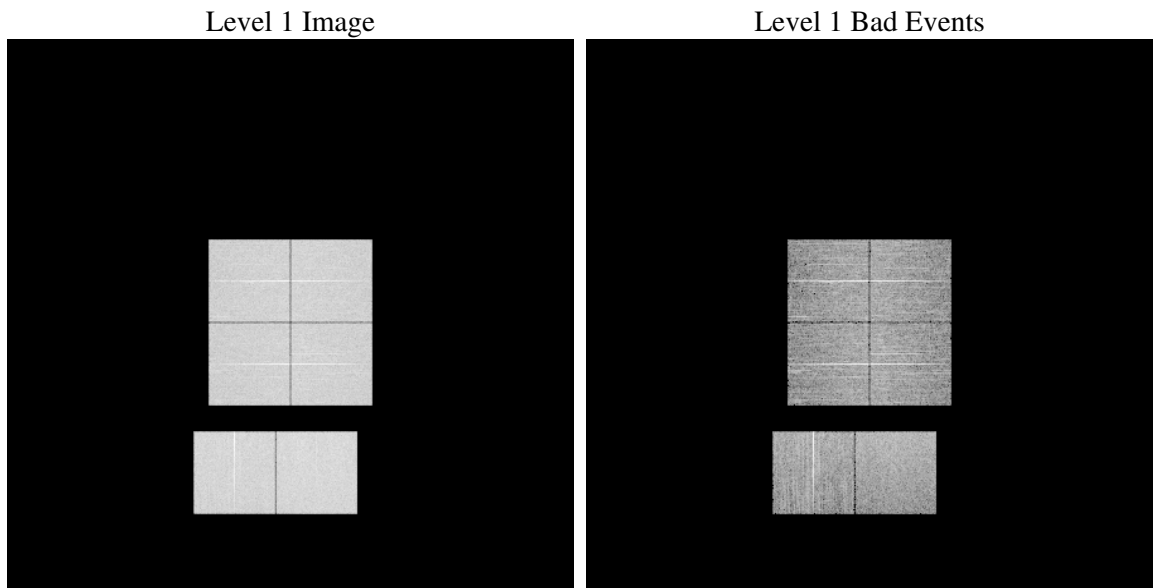
1 Front

seq_num	
obs_id	59645
title	ACIS-012367 diagnostics
observer	CHANDRA engineering request/realtime commanding
object	
dtcycle	0
cycle	P
ra_targ	0.0
dec_targ	0.0
ra_nom	262.47183244004
dec_nom	-2.4949930179163
roll_nom	137.03832313162
revision	2
ontime	8279.4364866912
livetime	8174.5972766186
ontime0	7696.1016730666
ontime1	7811.6584057808
ontime2	7519.9705885947
ontime3	7631.2000875771
ontime6	8093.6233217418
ontime7	8279.4364866912
l2events	1093307

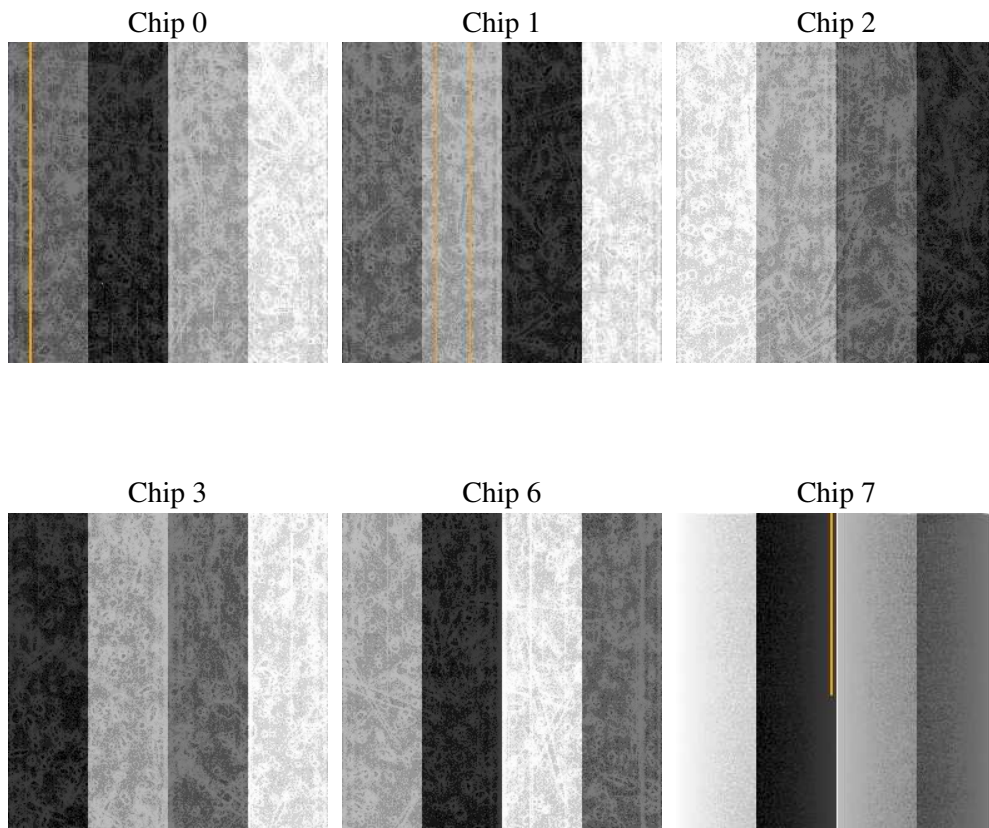
2 OBI

2.1 OBI

2.1.1 Images



2.1.2 Bias



2.1.3 Parameters

obi_num	0
ascdsver	7.6.7.1
caldbver	3.2.1
date	2006-03-09T01:01:25
revision	2

sched_exp_time	0.0
ontime	8280.774007231
ontime0	7697.3981536031
ontime1	7814.0734440684
ontime2	7522.3856268823
ontime3	7632.5786481202
ontime6	8096.0383600295
ontime7	8280.774007231
l1events	1489289

2.1.4 Events

	ccd 0	ccd 1	ccd 2	ccd 3	ccd 6	ccd 7
level 1 events	236803	240429	233945	240433	262439	275240
rejected events	53463	54327	53833	56117	60611	61266
rejected %	22%	22%	23%	23%	23%	22%

	ccd 0	ccd 1	ccd 2	ccd 3	ccd 6	ccd 7
grade 0 events	100500	101327	101016	103062	108998	35611
	42%	42%	43%	42%	41%	12%
grade 1 events	608	521	617	696	570	126
	0%	0%	0%	0%	0%	0%
grade 2 events	32162	33242	30198	31494	35093	65000
	13%	13%	12%	13%	13%	23%
grade 3 events	12100	11901	11828	12222	12865	14906
	5%	4%	5%	5%	4%	5%
grade 4 events	11664	12002	11743	12060	12557	14984
	4%	4%	5%	5%	4%	5%
grade 5 events	3314	3491	3177	3653	3837	7103
	1%	1%	1%	1%	1%	2%
grade 6 events	26914	27630	25327	25478	32315	83473
	11%	11%	10%	10%	12%	30%
grade 7 events	49541	50315	50039	51768	56204	54037
	20%	20%	21%	21%	21%	19%

2.2 Compared Parameters

Parameter	Planned	Actual	Parameter	Planned	Actual
Instrument	ACIS	ACIS	Obspar format version number	6	6
Detector	ACIS-012367	ACIS-012367	Obspar file type	PREDICTED	ACTUAL
Grating	NONE	NONE	Obspar update status	NONE	UPDATED
Data mode	FAINT	FAINT	On-chip summing requested	N	N
Observation mode	SECONDARY	SECONDARY	Subarray requested	NONE	NONE
Pointing RA	0	262.4718324400446	Alternating exposures requested	N	N
Pointing Dec	0	-2.494993017916265	Primary exposure time	3.2	3.2
Pointing Roll	0.0	137.0383231316161			
SIM focus pos (mm)	-0.782348	-0.6828225247311905			
SIM defocus (mm)	0	0.8505141146731063			
SIM translation stage pos (mm)	-233.592463	250.466033080201			
SIM translation stage offset (mm)	0	-0.01005468664627074			
Observation start time	233517761.557984	233517760.53295			
Observation start date	2005-05-26T18:02:42	2005-05-26T18:02:40			
Observation end time	233540432.50902	233540431.48398			
Observation end date	2005-05-27T00:20:33	2005-05-27T00:20:31			
Read mode	TIMED	TIMED			

2.3 Aspect

2.4 Star Slots

2.5 FID Slots

A Summary

A.1 Status

V&V Scientist	Beth Sundheim
V&V Date (YYYY-MM-DD)	2006.03.09
V&V Edition	1
V&V Disposition and Status	OK
V&V Charge Time	8.27943648

A.2 Comments