

V&V Reference Report

L2 ASCDS Version : 7.6.7.1

Observation 59585 - L2 Version 002
Chandra X-Ray Center

L2 Processing Date : Mar 12 2006

Contents

1	Front	2
2	OBI	3
2.1	OBI	3
2.1.1	Images	3
2.1.2	Bias	3
2.1.3	Parameters	4
2.1.4	Events	4
2.2	Compared Parameters	5
2.3	Aspect	6
2.4	Star Slots	8
2.5	FID Slots	8
A	Summary	9
A.1	Status	9
A.2	Comments	9

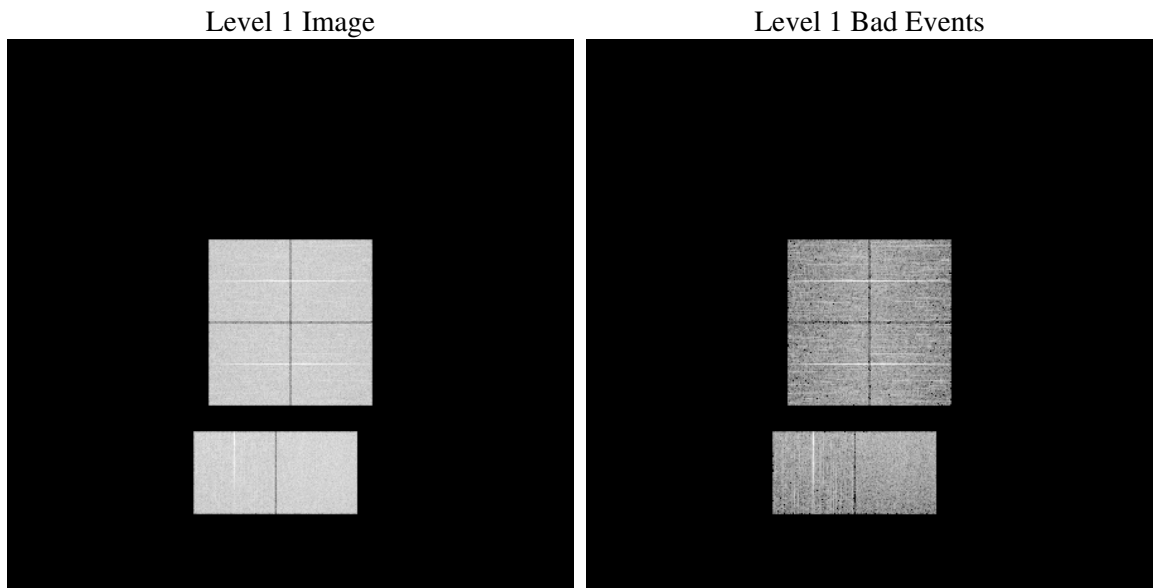
1 Front

seq_num	
obs_id	59585
title	ACIS-012367 diagnostics
observer	CHANDRA engineering request/realtime commanding
object	
dtcycle	0
cycle	P
ra_targ	0.0
dec_targ	0.0
ra_nom	106.57580691551
dec_nom	-24.218165204732
roll_nom	186.56887435089
revision	2
ontime	5558.6501492858
livetime	5488.2631740783
ontime0	5292.932574451
ontime1	5361.0334320962
ontime2	5186.0628852248
ontime3	5218.3083677292
ontime6	5503.2627038658
ontime7	5558.6501492858
l2events	729188

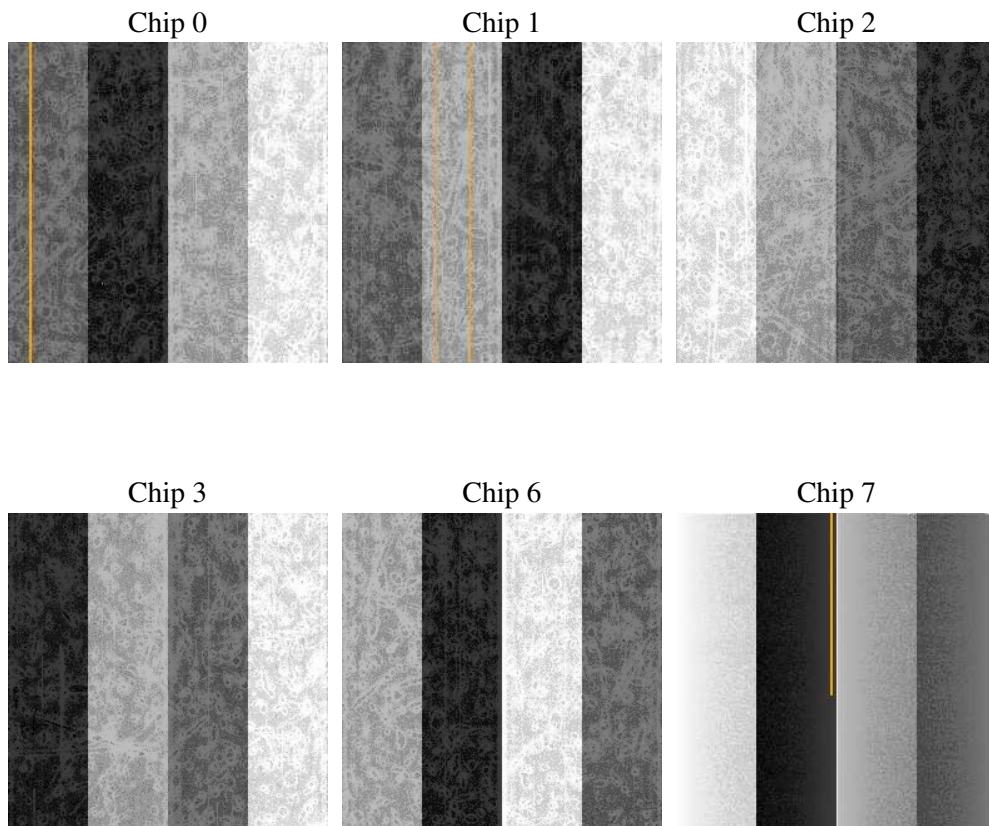
2 OBI

2.1 OBI

2.1.1 Images



2.1.2 Bias



2.1.3 Parameters

obi_num	0
ascdsver	7.6.7.1
caldsver	3.2.1
date	2006-03-12T06:45:39
revision	2

sched_exp_time	0.0
ontime	5561.5555142164
ontime0	5295.7968993783
ontime1	5363.8567170203
ontime2	5188.8451301455
ontime3	5221.2547726631
ontime6	5506.4592488706
ontime7	5561.5555142164
l1events	1007240

2.1.4 Events

	ccd 0	ccd 1	ccd 2	ccd 3	ccd 6	ccd 7
level 1 events	161507	163351	161012	162348	176299	182723
rejected events	38067	38581	39266	40222	41812	42098
rejected %	23%	23%	24%	24%	23%	23%

	ccd 0	ccd 1	ccd 2	ccd 3	ccd 6	ccd 7
grade 0 events	67744	67944	67872	68200	72560	23324
	41%	41%	42%	42%	41%	12%
grade 1 events	421	358	447	421	368	80
	0%	0%	0%	0%	0%	0%
grade 2 events	21708	22454	20611	20909	23265	42511
	13%	13%	12%	12%	13%	23%
grade 3 events	7993	8069	8029	8081	8445	9879
	4%	4%	4%	4%	4%	5%
grade 4 events	7978	8042	8060	7880	8405	9717
	4%	4%	5%	4%	4%	5%
grade 5 events	2370	2394	2233	2503	2644	4788
	1%	1%	1%	1%	1%	2%
grade 6 events	18118	18337	17254	17134	21884	55267
	11%	11%	10%	10%	12%	30%
grade 7 events	35175	35753	36506	37220	38728	37157
	21%	21%	22%	22%	21%	20%

2.2 Compared Parameters

Parameter	Planned	Actual	Parameter	Planned	Actual
Instrument	ACIS	ACIS	Obspar format version number	6	6
Detector	ACIS-012367	ACIS-012367	Obspar file type	PREDICTED	ACTUAL
Grating	NONE	NONE	Obspar update status	NONE	UPDATED
Data mode	FAINT	FAINT	On-chip summing requested	N	N
Observation mode	SECONDARY	SECONDARY	Subarray requested	NONE	NONE
Pointing RA	0	106.5758069155057	Alternating exposures requested	N	N
Pointing Dec	0	-24.21816520473237	Primary exposure time	3.2	3.2
Pointing Roll	0.0	186.56887435089			
SIM focus pos (mm)	-0.782348	-0.7809083437167272			
SIM defocus (mm)	0	0.7524282956875696			
SIM translation stage pos (mm)	-233.592463	250.466033080201			
SIM translation stage offset (mm)	0	-0.01005468664627074			
Observation start time	236678695.652242	236678694.62724			
Observation start date	2005-07-02T08:04:56	2005-07-02T08:04:54			
Observation end time	236719004.804085	236719003.77908			
Observation end date	2005-07-02T19:16:45	2005-07-02T19:16:43			
Read mode	TIMED	TIMED			

2.3 Aspect

2.4 Star Slots

2.5 FID Slots

A Summary

A.1 Status

V&V Scientist	Beth Sundheim
V&V Date (YYYY-MM-DD)	2006.03.13
V&V Edition	1
V&V Disposition and Status	OK
V&V Charge Time	5.55865014

A.2 Comments