

V&V Reference Report

L2 ASCDS Version : 8.5.1.1

Observation 59575 - L2 Version 3
Chandra X-Ray Center

L2 Processing Date : Dec 25 2012

Contents

1	Front	2
2	OBI	3
2.1	OBI	3
2.1.1	Images	3
2.1.2	Bias	3
2.1.3	Parameters	4
2.1.4	Events	4
2.2	Compared Parameters	5
2.3	Star Slots	6
2.4	FID Slots	6
A	Summary	7
A.1	Status	7
A.2	Comments	7

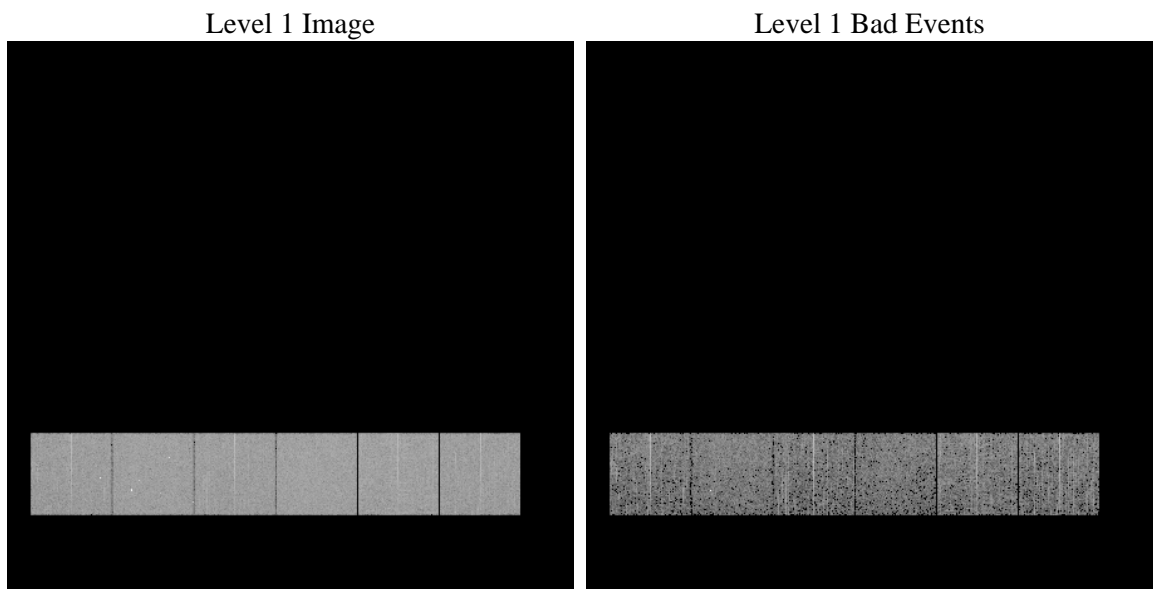
1 Front

seq_num	 	Sequence number
obs_id	59575	Observation id
title	ACIS-456789 diagnostics	Proposal title
observer	CHANDRA engineering request/realtime commanding	Principal investig
object	 	Source name
dtcycle	0	
cycle	P	events from which exps? Prim/Second/Both
ra_targ	0.0	Observer's specified target RA [deg]
dec_targ	0.0	Observer's specified target Dec [deg]
ra_nom	257.01018181984	Nominal RA [deg]
dec_nom	-23.021969534899	Nominal Dec [deg]
roll_nom	265.129570111	Nominal Roll [deg]
revision	3	Processing version of data
ontime	2716.7999898791	Sum of GTIs [s]
livetime	2682.3982325467	Livetime [s]
ontime4	2496.414139837	Sum of GTIs [s]
ontime5	2716.7999898791	Sum of GTIs [s]
ontime6	2567.7155062258	Sum of GTIs [s]
ontime7	2716.7999898791	Sum of GTIs [s]
ontime8	2642.2576433718	Sum of GTIs [s]
ontime9	2528.8239123225	Sum of GTIs [s]
l2events	361616	Number of level 2 events

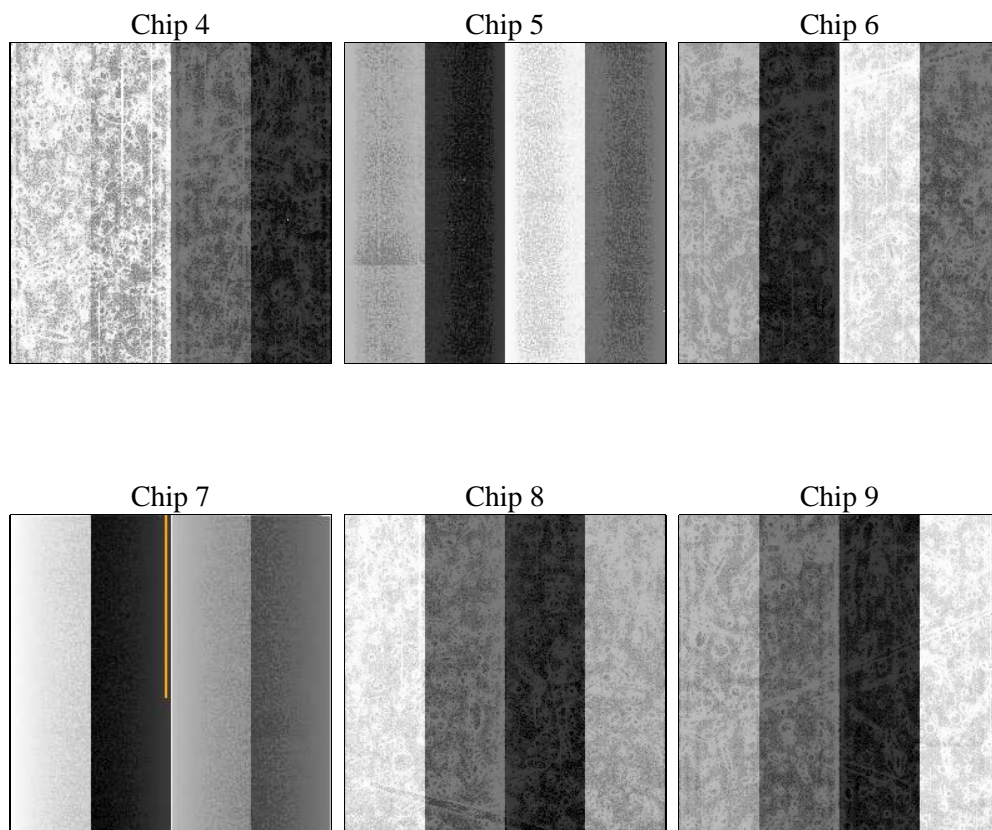
2 OBI

2.1 OBI

2.1.1 Images



2.1.2 Bias



2.1.3 Parameters

obi_num	0	Obi number	sched_exp_time	0.0	[s] Scheduled observation exposure time
ascdsver	8.5.1.1	Processing system revision	ontime	2716.7999898791	Sum of GTIs [s]
caldsver	4.5.5	 	ontime4	2496.414139837	Sum of GTIs [s]
date	2012-12-26T03:30:03	Date and time of file creation	ontime5	2716.7999898791	Sum of GTIs [s]
revision	3	Processing version of data	ontime6	2567.7155062258	Sum of GTIs [s]
			ontime7	2716.7999898791	Sum of GTIs [s]
			ontime8	2642.2576433718	Sum of GTIs [s]
			ontime9	2528.8239123225	Sum of GTIs [s]
			l1events	504970	Number of level 1 events

2.1.4 Events

	ccd 4	ccd 5	ccd 6	ccd 7	ccd 8	ccd 9		ccd 4	ccd 5	ccd 6	ccd 7	ccd 8	ccd 9
level 1 events	77840	85552	82355	88993	89747	80483	grade 0 events	33245	13660	34204	17146	36229	32634
rejected events	20239	20160	19298	16881	22003	20507		42%	15%	41%	19%	40%	40%
rejected %	26%	23%	23%	18%	24%	25%	grade 1 events	242	80	183	54	210	215
								0%	0%	0%	0%	0%	0%
							grade 2 events	9089	23794	10879	15716	11911	10414
								11%	27%	13%	17%	13%	12%
							grade 3 events	3982	3727	3996	7118	4557	3835
								5%	4%	4%	7%	5%	4%
							grade 4 events	3869	3627	3876	7137	4463	3902
								4%	4%	4%	8%	4%	4%
							grade 5 events	1192	3176	1229	2926	1495	1238
								1%	3%	1%	3%	1%	1%
							grade 6 events	7494	20670	10173	24995	10670	9191
								9%	24%	12%	28%	11%	11%
							grade 7 events	18727	16818	17815	13901	20212	19054
								24%	19%	21%	15%	22%	23%

2.2 Compared Parameters

Parameter	Planned	Actual	Parameter	Planned	Actual
Instrument	ACIS	ACIS	Obspar format version number	7	7
Detector	ACIS-456789	ACIS-456789	Obspar file type	PREDICTED	ACTUAL
Grating	NONE	NONE	Obspar update status	NONE	UPDATED
Data mode	FAINT	FAINT	On-chip summing requested	N	N
Observation mode	SECONDARY	SECONDARY	Subarray requested	NONE	NONE
[deg] Pointing RA	0	257.0101818198379	Alternating exposures requested	N	N
[deg] Pointing Dec	0	-23.0219695348993	[s] Primary exposure time	3.2	3.2
[deg] Pointing Roll	0.0	265.1295701110022			
[mm] SIM focus pos	-0.684267	-0.6828225247311905			
[mm] SIM defocus	0	0.8505141146731063			
[mm] SIM translation stage pos	-190.132523	250.466033080201			
[mm] SIM translation stage offset	0	-0.01005468664627074			
[s] Observation start time (MET)	237366364.083706	237366363.0587			
Observation start date	2005-07-10T07:06:04	2005-07-10T07:06:03			
[s] Observation end time (MET)	237381950.234419	237381949.20941			
Observation end date	2005-07-10T11:25:50	2005-07-10T11:25:49			
Read mode	TIMED	TIMED			

2.3 Star Slots

2.4 FID Slots

A Summary

A.1 Status

V&V Scientist	Beth Sundheim
V&V Date (YYYY-MM-DD)	2013.01.22
V&V Edition	1
V&V Disposition and Status	OK
V&V Charge Time	2.7167999898791

A.2 Comments