

V&V Reference Report

L2 ASCDS Version : 7.6.7.1

Observation 59525 - L2 Version 002
Chandra X-Ray Center

L2 Processing Date : Mar 16 2006

Contents

1	Front	2
2	OBI	3
2.1	OBI	3
2.1.1	Images	3
2.1.2	Bias	3
2.1.3	Parameters	4
2.1.4	Events	4
2.2	Compared Parameters	5
2.3	Aspect	6
2.4	Star Slots	8
2.5	FID Slots	8
A	Summary	9
A.1	Status	9
A.2	Comments	9

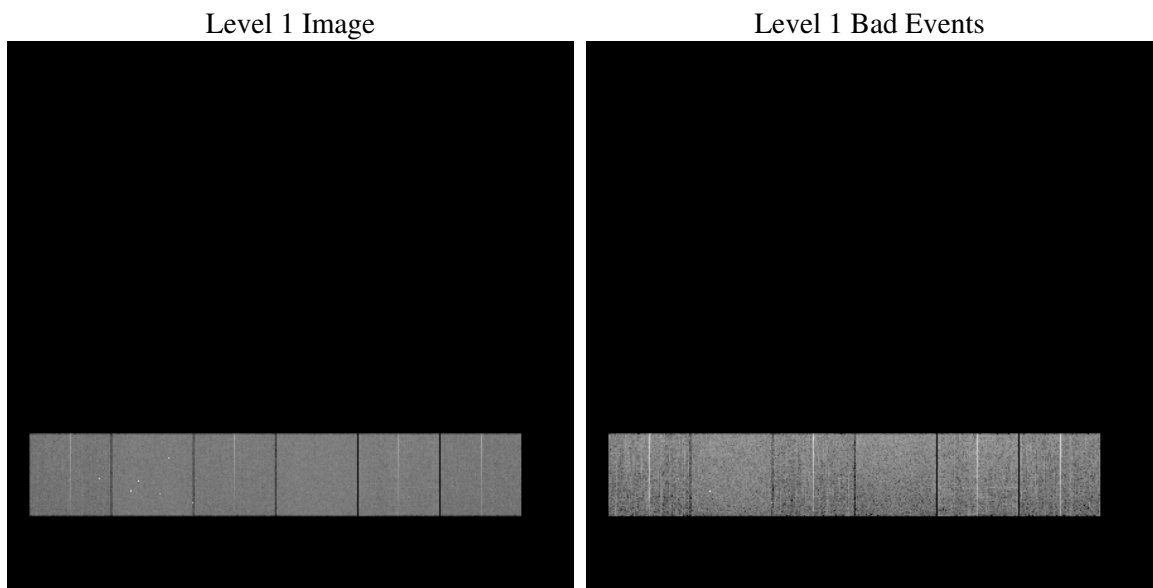
1 Front

seq_num	
obs_id	59525
title	ACIS-456789 diagnostics
observer	CHANDRA engineering request/realtime commanding
object	
dtcycle	0
cycle	P
ra_targ	0.0
dec_targ	0.0
ra_nom	304.97921359662
dec_nom	9.9800322358817
roll_nom	191.30571933445
revision	2
ontime	7800.3065564334
livetime	7701.5343780352
ontime4	6831.3760381937
ontime5	7800.3475964367
ontime6	7311.0003217757
ontime7	7800.3065564334
ontime8	7476.3722281456
ontime9	7181.2380892634
l2events	991217

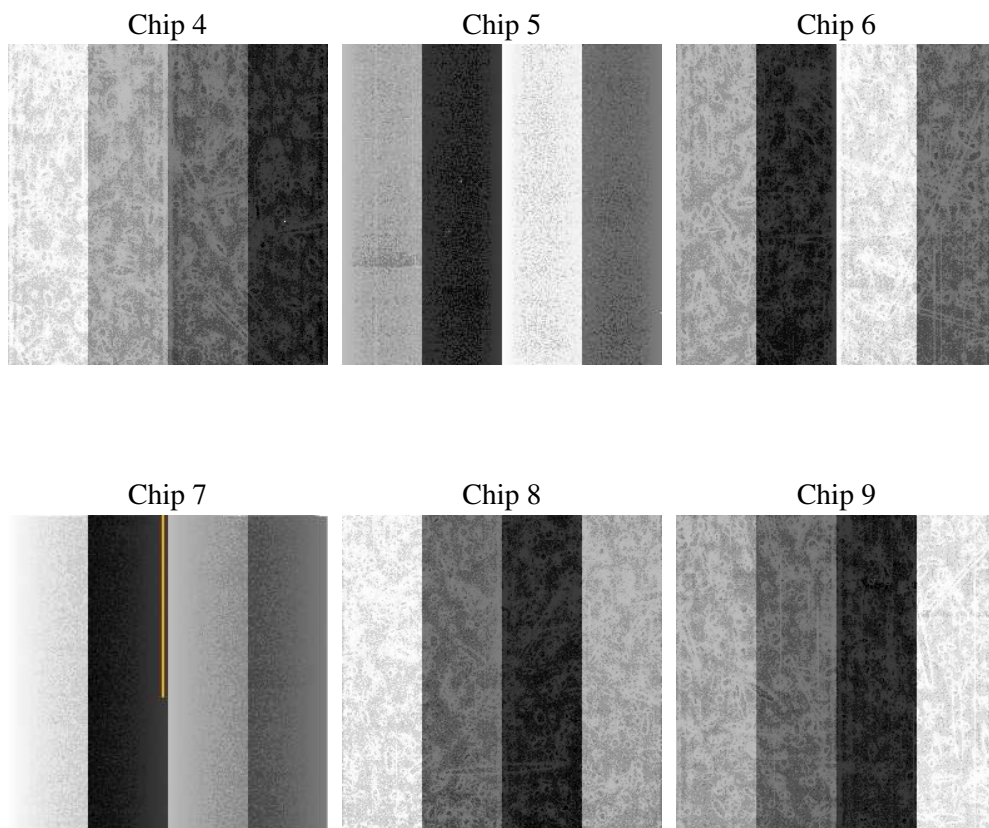
2 OBI

2.1 OBI

2.1.1 Images



2.1.2 Bias



2.1.3 Parameters

obi_num	1
ascdsver	7.6.7.1
caldsver	3.2.1
date	2006-03-16T05:56:28
revision	2

sched_exp_time	0.0
ontime	7801.1113170385
ontime4	6832.0576787889
ontime5	7801.1113170385
ontime6	7311.7230023742
ontime7	7801.1113170385
ontime8	7477.0128287673
ontime9	7182.0838898718
l1events	1402384

2.1.4 Events

	ccd 4	ccd 5	ccd 6	ccd 7	ccd 8	ccd 9
level 1 events	207431	242826	231781	251318	248758	220270
rejected events	54482	60026	54942	56294	62838	54544
rejected %	26%	24%	23%	22%	25%	24%

	ccd 4	ccd 5	ccd 6	ccd 7	ccd 8	ccd 9
grade 0 events	88362	22850	95564	33251	100131	91295
	42%	9%	41%	13%	40%	41%
grade 1 events	696	156	518	104	496	553
	0%	0%	0%	0%	0%	0%
grade 2 events	24303	82862	31107	58371	33228	28318
	11%	34%	13%	23%	13%	12%
grade 3 events	10167	5617	11045	13945	12240	10658
	4%	2%	4%	5%	4%	4%
grade 4 events	10366	5478	11053	13807	11899	10562
	4%	2%	4%	5%	4%	4%
grade 5 events	2930	5868	3462	6686	4211	3610
	1%	2%	1%	2%	1%	1%
grade 6 events	19751	65993	28070	75650	28422	24893
	9%	27%	12%	30%	11%	11%
grade 7 events	50856	54002	50962	49504	58131	50381
	24%	22%	21%	19%	23%	22%

2.2 Compared Parameters

Parameter	Planned	Actual	Parameter	Planned	Actual
Instrument	ACIS	ACIS	Obspar format version number	6	6
Detector	ACIS-456789	ACIS-456789	Obspar file type	PREDICTED	ACTUAL
Grating	NONE	NONE	Obspar update status	NONE	UPDATED
Data mode	FAINT	FAINT	On-chip summing requested	N	N
Observation mode	SECONDARY	SECONDARY	Subarray requested	NONE	NONE
Pointing RA	0	304.979213596617	Alternating exposures requested	N	N
Pointing Dec	0	9.980032235881747	Primary exposure time	3.2	3.2
Pointing Roll	0.0	191.30571933445			
SIM focus pos (mm)	-0.684267	-0.7809083437167272			
SIM defocus (mm)	0	0.7524282956875696			
SIM translation stage pos (mm)	-190.132523	250.466033080201			
SIM translation stage offset (mm)	0	-0.01005468664627074			
Observation start time	239194004.767347	239194003.74235			
Observation start date	2005-07-31T10:46:45	2005-07-31T10:46:43			
Observation end time	239208129.267993	239208128.243			
Observation end date	2005-07-31T14:42:09	2005-07-31T14:42:08			
Read mode	TIMED	TIMED			

2.3 Aspect

2.4 Star Slots

2.5 FID Slots

A Summary

A.1 Status

V&V Scientist	Jen Lauer
V&V Date (YYYY-MM-DD)	2006.03.16
V&V Edition	1
V&V Disposition and Status	OK
V&V Charge Time	7.80030655

A.2 Comments