

V&V Reference Report

L2 ASCDS Version : 7.6.7.1

Observation 5945 - L2 Version 002
Chandra X-Ray Center

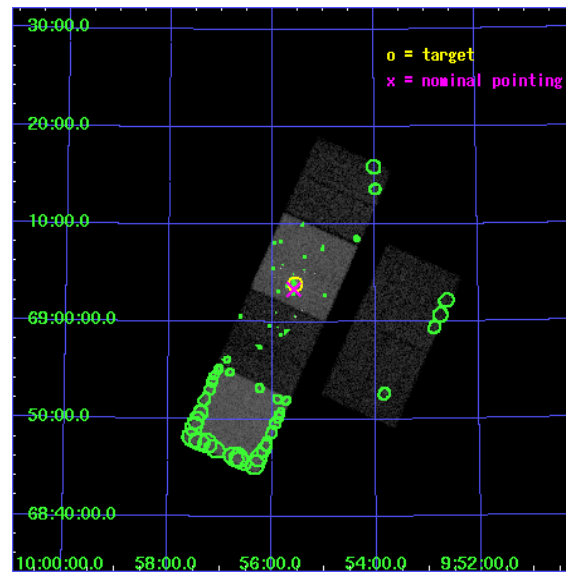
L2 Processing Date : Mar 11 2006

Contents

1	Front	2
2	OBI	3
2.1	OBI	3
2.1.1	Images	3
2.1.2	Bias	3
2.1.3	Parameters	4
2.1.4	Events	4
2.2	Compared Parameters	5
2.3	Aspect	6
2.4	Star Slots	9
2.4.1	Slot 3	9
2.4.2	Slot 4	10
2.4.3	Slot 5	11
2.4.4	Slot 6	12
2.4.5	Slot 7	13
2.5	FID Slots	14
2.5.1	Slot 0	14
2.5.2	Slot 1	15
2.5.3	Slot 2	16
3	Point Sources	17
A	Summary	18
A.1	Status	18
A.2	Comments	18

1 Front

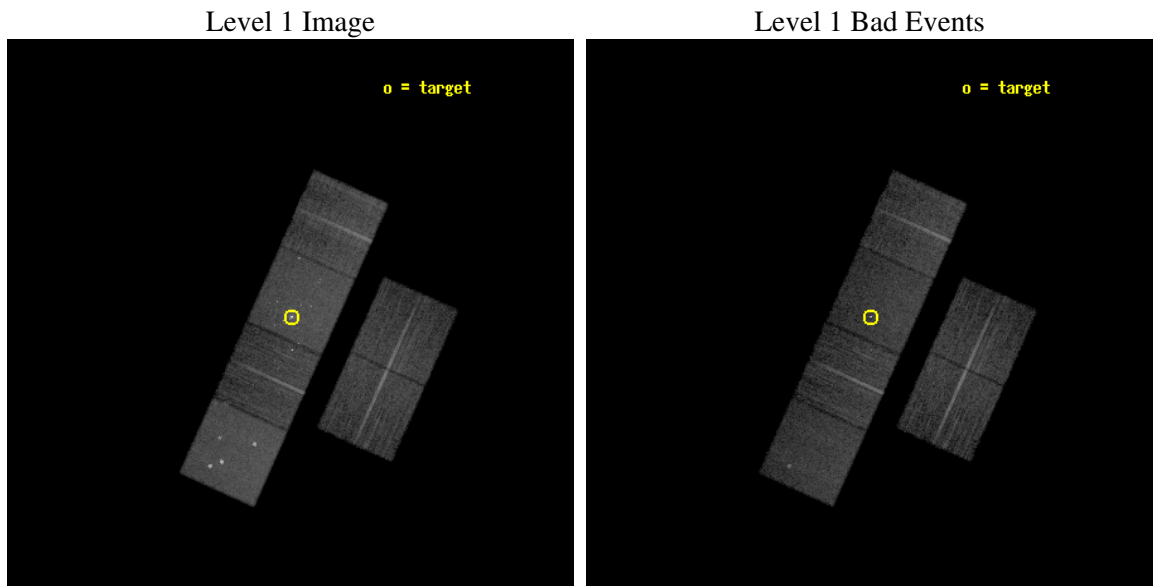
seq_num	600464
obs_id	5945
title	An Unprecedented View of a Galaxy's Dynamic X-ray Source Population
observer	Dr. David Pooley
object	M81
dtcycle	0
cycle	P
ra_targ	148.888333
dec_targ	69.065306
ra_nom	148.89484585672
dec_nom	69.055976561843
roll_nom	294.19570711076
revision	2
ontime	11724.799956322
livetime	11576.333479448
ontime2	11724.799956322
ontime3	11724.799956322
ontime5	11724.799956322
ontime6	11724.799956322
ontime7	11724.799956322
ontime8	11724.799956322
l2events	157332



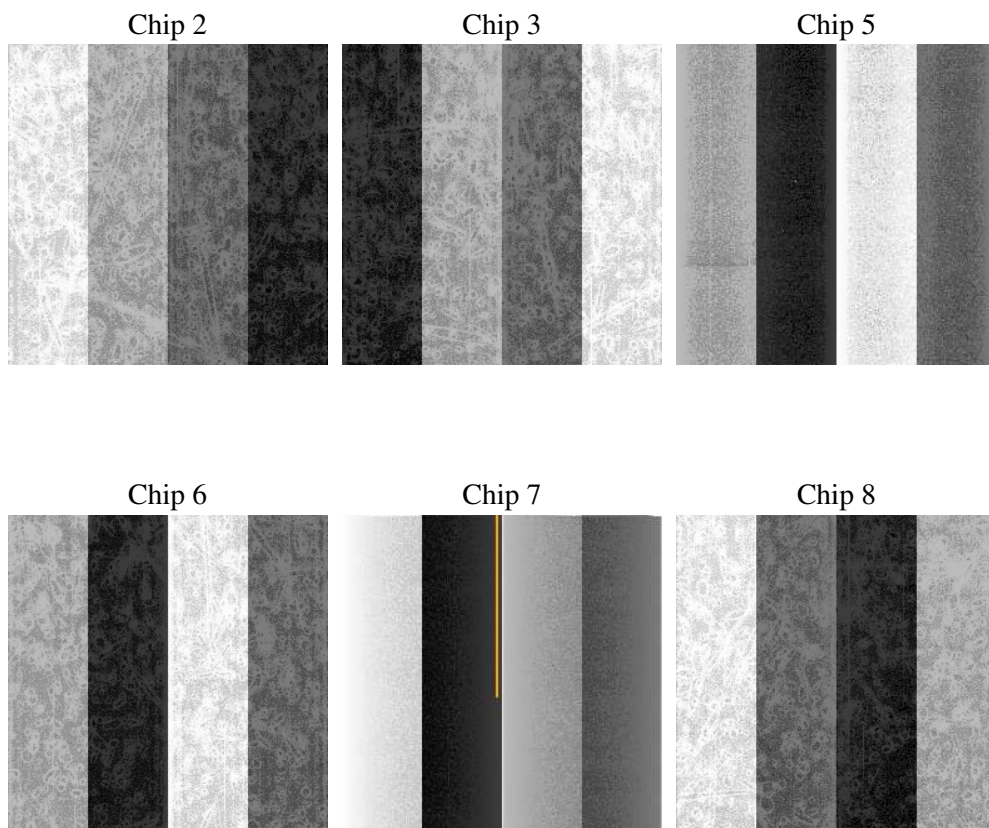
2 OBI

2.1 OBI

2.1.1 Images



2.1.2 Bias



2.1.3 Parameters

obi_num	0
ascdsver	7.6.7.1
caldbver	3.2.1
date	2006-03-11T17:31:39
revision	2

sched_exp_time	11584.031000
ontime	12286.633381456
ontime2	12286.633381456
ontime3	12289.874371648
ontime5	12289.874391556
ontime6	12289.874371648
ontime7	12286.633381456
ontime8	12289.874371648
l1events	705468

2.1.4 Events

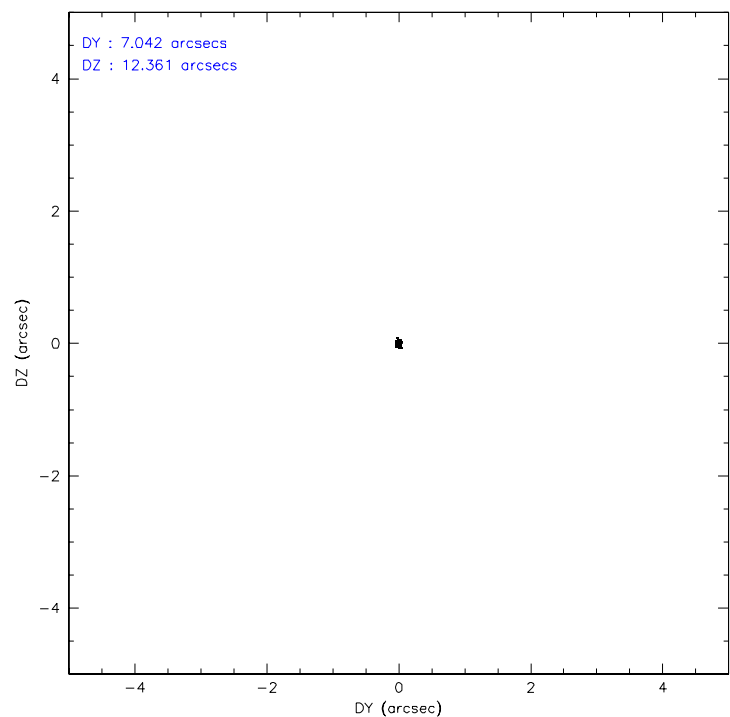
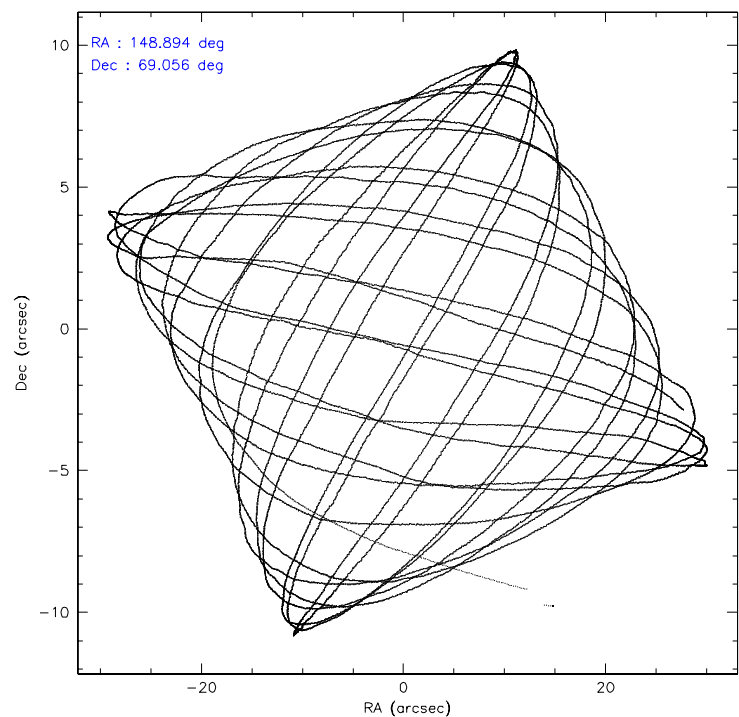
	ccd 2	ccd 3	ccd 5	ccd 6	ccd 7	ccd 8
level 1 events	96834	92505	151052	99027	144973	121077
rejected events	85799	81792	83307	85696	86793	95872
rejected %	88%	88%	55%	86%	59%	79%

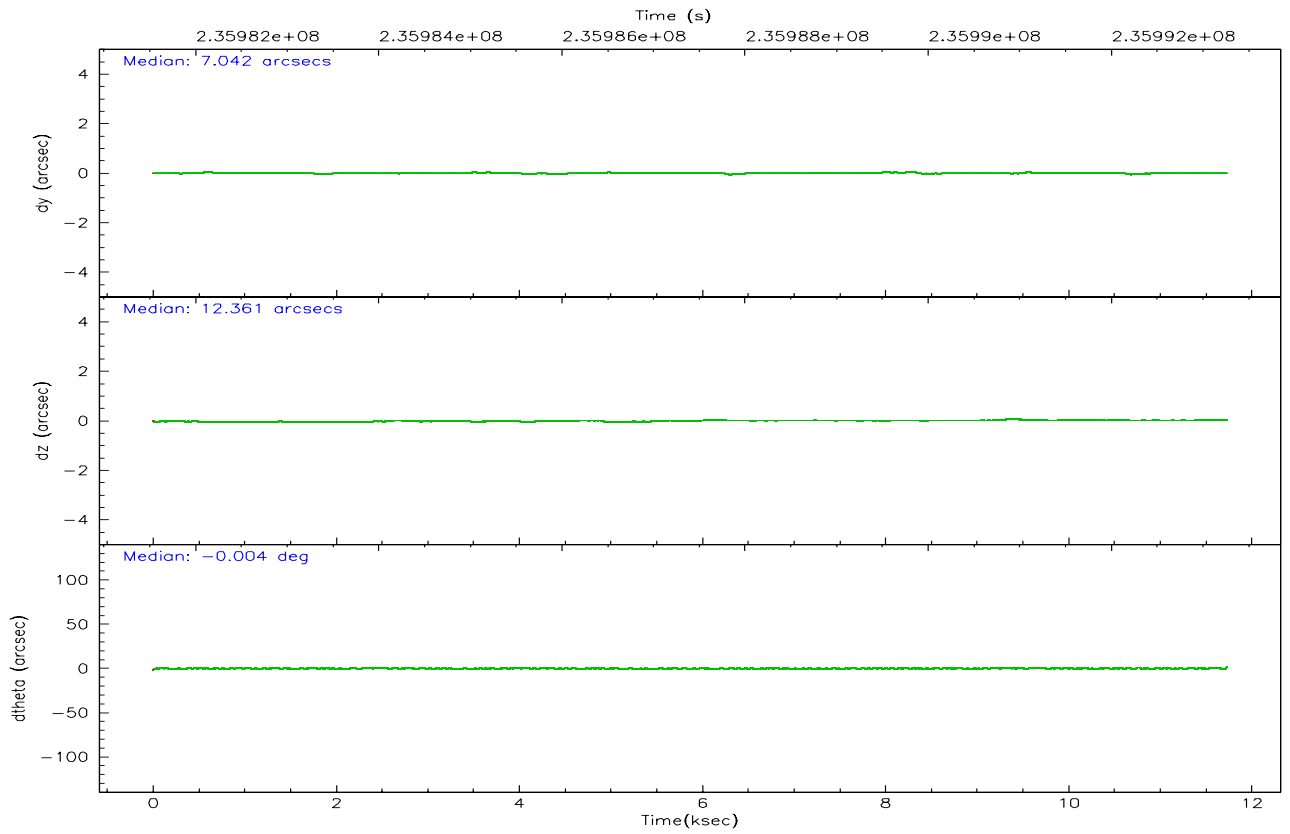
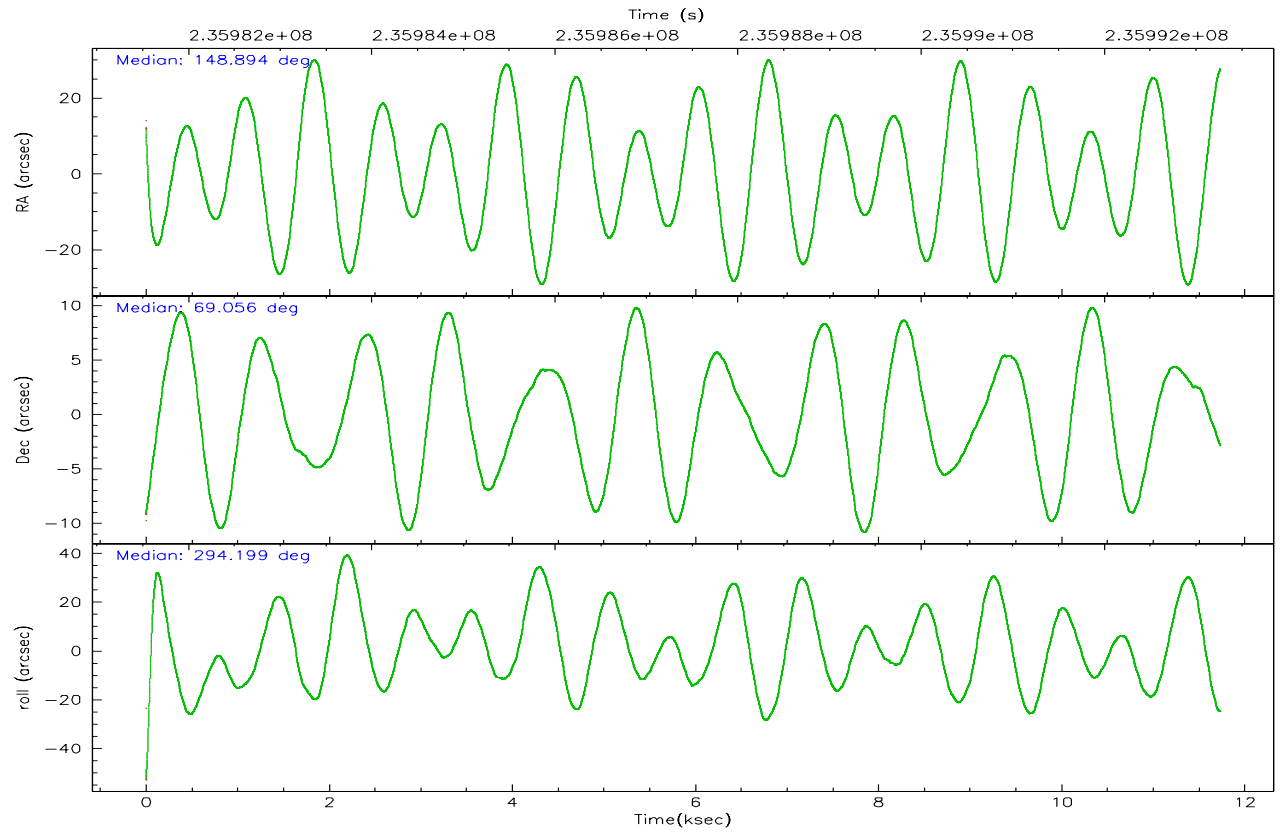
	ccd 2	ccd 3	ccd 5	ccd 6	ccd 7	ccd 8
grade 0 events	5183	5000	10703	6583	5184	8435
	5%	5%	7%	6%	3%	6%
grade 1 events	64	65	569	102	166	88
	0%	0%	0%	0%	0%	0%
grade 2 events	2355	2153	20502	2742	15259	5855
	2%	2%	13%	2%	10%	4%
grade 3 events	1084	1060	1453	1165	3527	2819
	1%	1%	0%	1%	2%	2%
grade 4 events	1111	1074	1299	1154	3503	2533
	1%	1%	0%	1%	2%	2%
grade 5 events	3810	4341	6889	4527	9025	5786
	3%	4%	4%	4%	6%	4%
grade 6 events	1828	1947	37025	2324	33131	6700
	1%	2%	24%	2%	22%	5%
grade 7 events	81399	76865	72612	80430	75178	88861
	84%	83%	48%	81%	51%	73%

2.2 Compared Parameters

Parameter	Planned	Actual	Parameter	Planned	Actual
Instrument	ACIS	ACIS	Obspar format version number	6	6
Detector	ACIS-235678	ACIS-235678	Obspar file type	PREDICTED	ACTUAL
Grating	NONE	NONE	Obspar update status	NONE	UPDATED
Data mode	FAINT	FAINT	On-chip summing requested	N	N
Observation mode	POINTING	POINTING	Subarray requested	NONE	NONE
Pointing RA	148.832504	148.8948458567183	Alternating exposures requested	N	N
Pointing Dec	69.071543	69.05597656184284	Primary exposure time	0.000000	3.2
Pointing Roll	294.097377	294.1957071107603			
SIM focus pos (mm)	-0.684267	-0.6828225247311905			
SIM defocus (mm)	0	0.001444936568705701			
SIM translation stage pos (mm)	-190.132523	-190.1400660498719			
SIM translation stage offset (mm)	0	0.00754346686406393			
Observation start time	235981684.184000	235980352.87032			
Observation start date	2005-06-24T06:27:00	2005-06-24T06:05:52			
Observation end time	235993268.184000	235993491.32092			
Observation end date	2005-06-24T09:40:04	2005-06-24T09:44:51			
Read mode	TIMED	TIMED			

2.3 Aspect



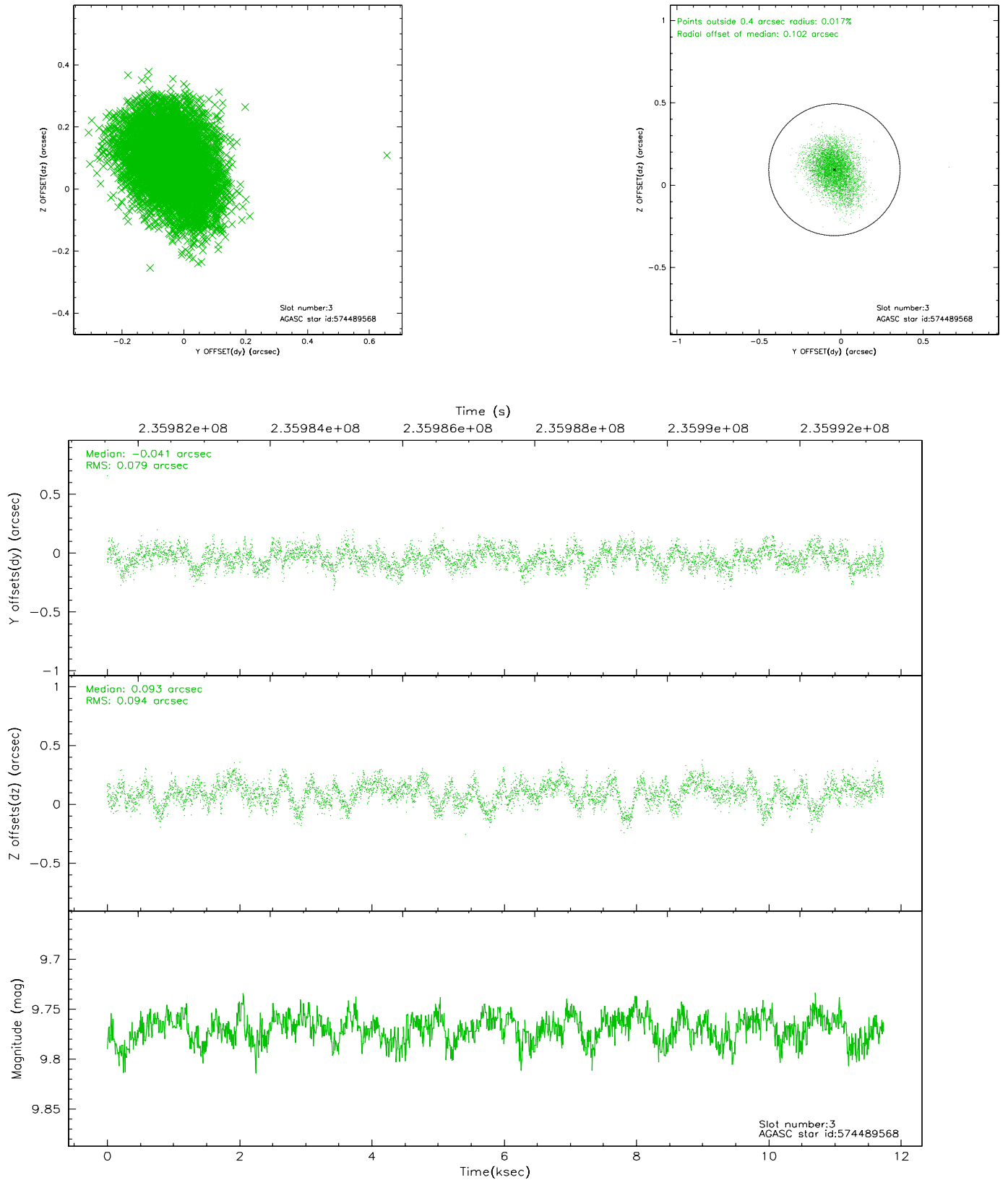


Slot Statistics

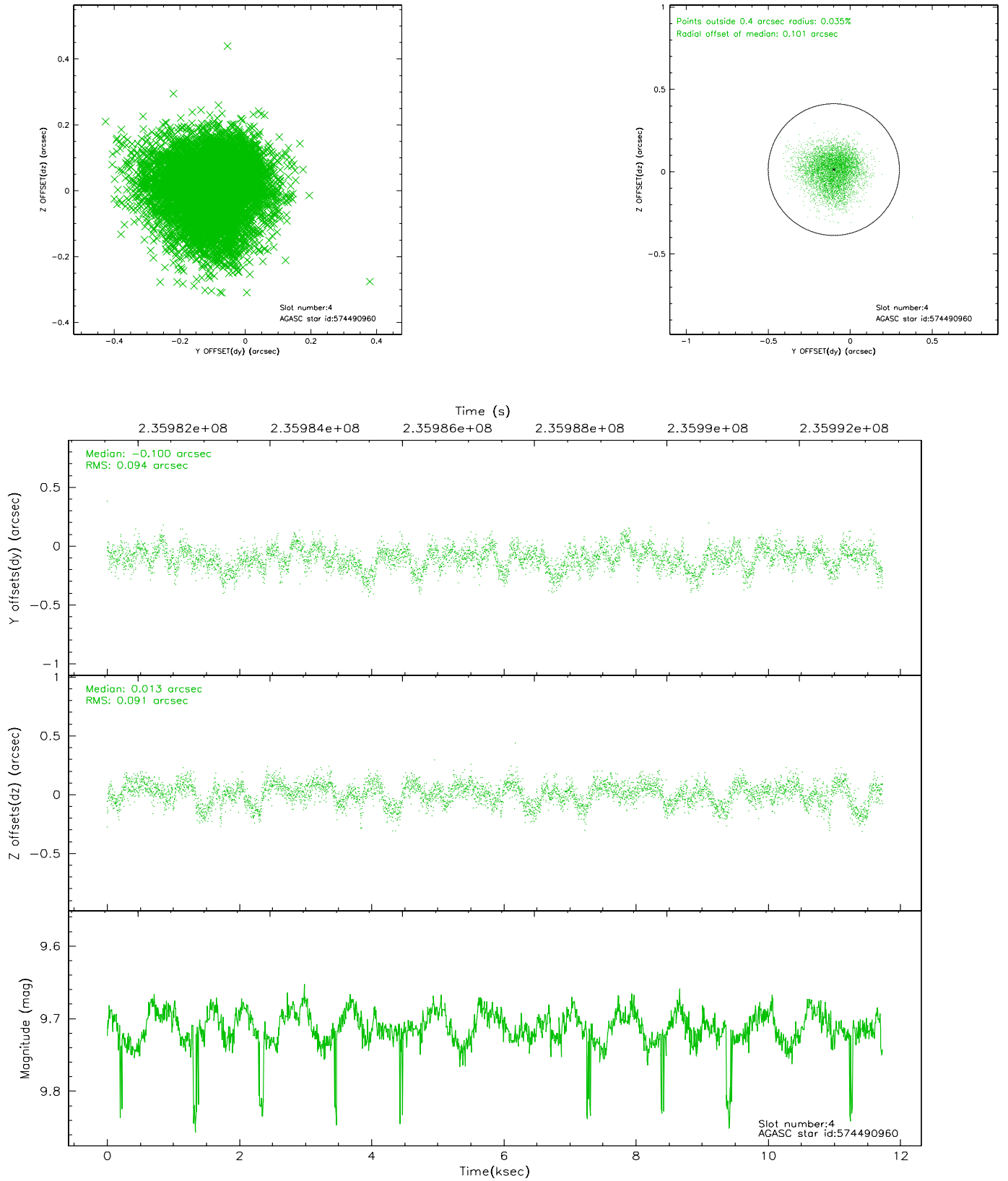
slot	status	id	mag	n_pts	med_dy	med_dz	dr1	dr2	ra	dec	mean_y	mean_z
0	FID	ACIS-S-1	7.18	2862	0.029	-0.046	0.006	0.011	0.000000	0.000000	936.22	-1729.37
1	FID	ACIS-S-4	7.20	2863	0.004	0.022	0.006	0.010	0.000000	0.000000	2153.88	174.39
2	FID	ACIS-S-5	7.23	2862	-0.060	0.037	0.005	0.010	0.000000	0.000000	-1812.14	168.57
3	GUIDE	574489568	9.77	5718	-0.041	0.093	0.130	0.212	147.223974	69.438157	-2058.75	-1306.28
4	GUIDE	574490960	9.71	5701	-0.100	0.013	0.140	0.220	148.185918	69.658768	-2263.57	126.14
5	GUIDE	574491280	9.34	5716	-0.066	-0.051	0.086	0.139	148.611567	69.450135	-1357.99	301.19
6	GUIDE	574497600	10.45	5509	0.122	0.052	0.198	0.369	147.824120	68.451903	1482.50	-2123.49
7	GUIDE	574496312	10.29	5703	0.098	-0.098	0.166	0.264	149.547505	68.718299	1538.55	335.45

2.4 Star Slots

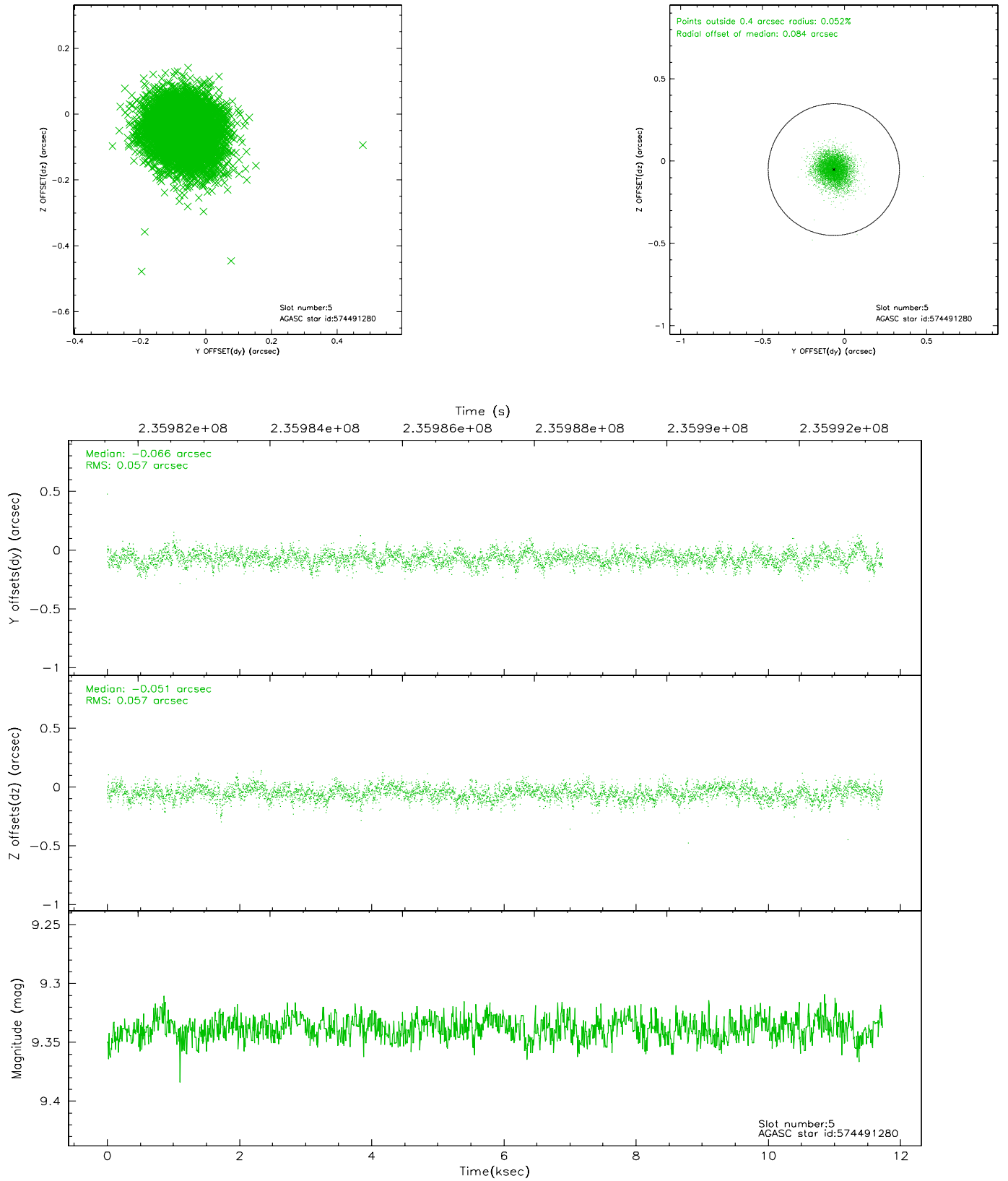
2.4.1 Slot 3



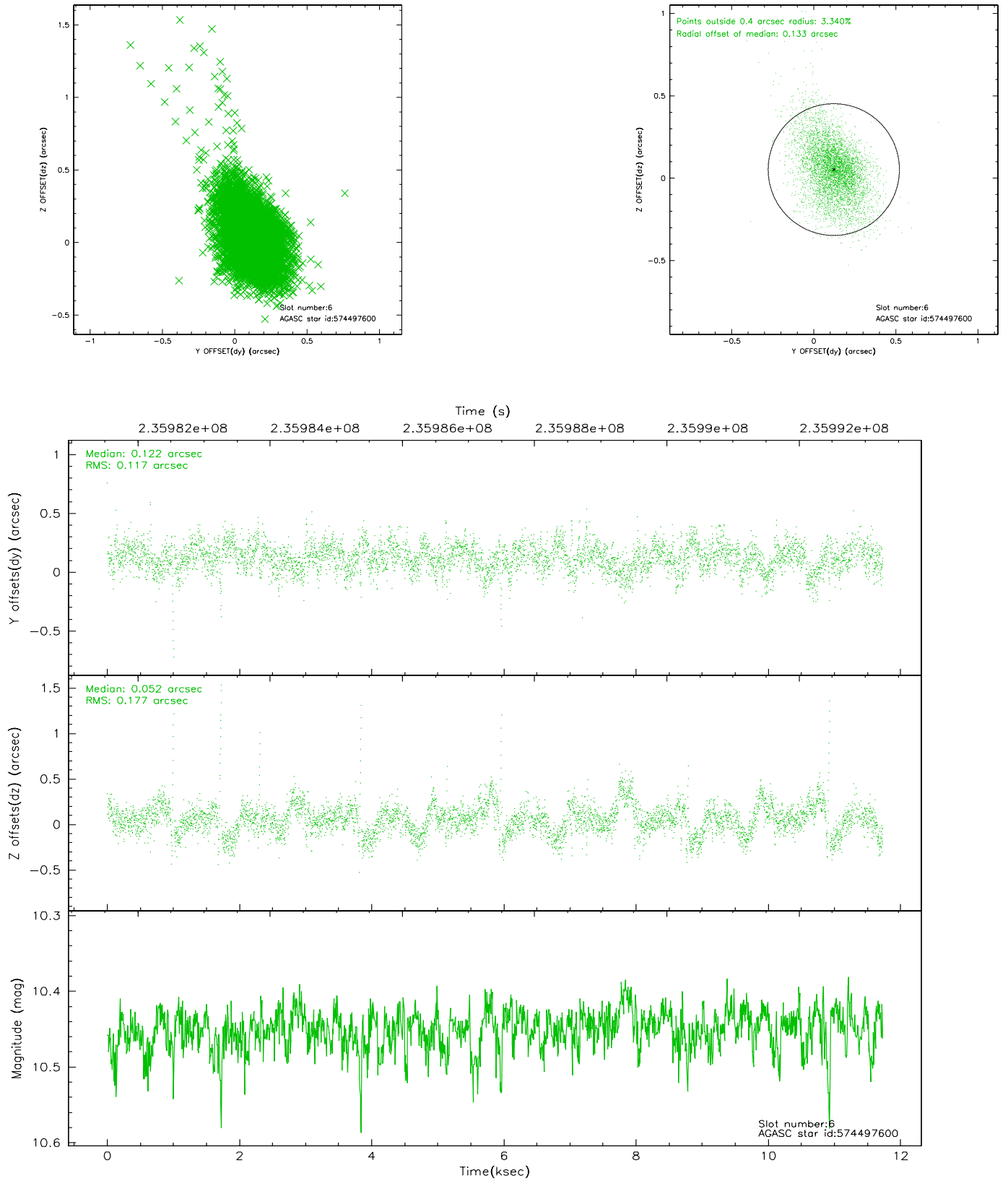
2.4.2 Slot 4



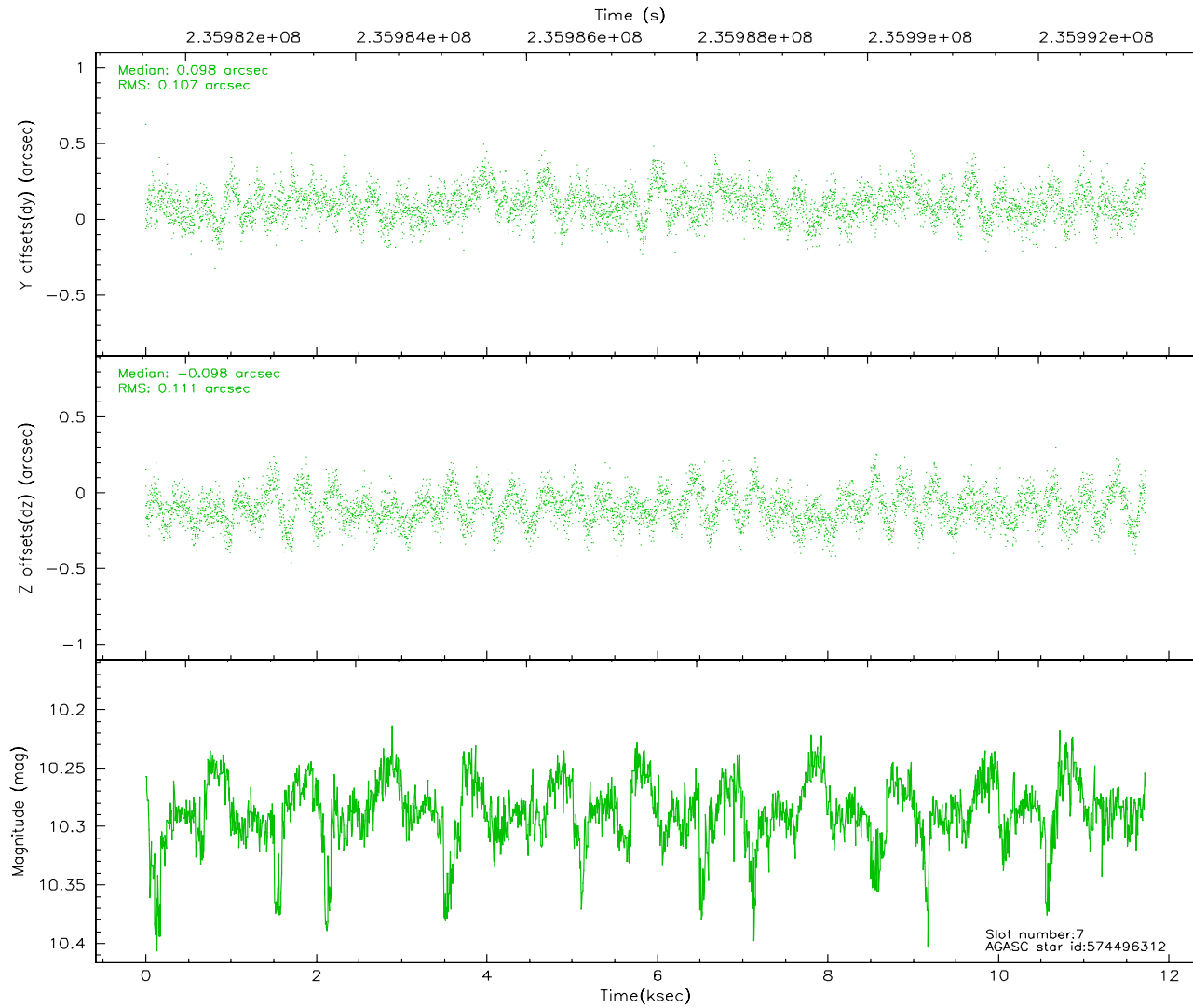
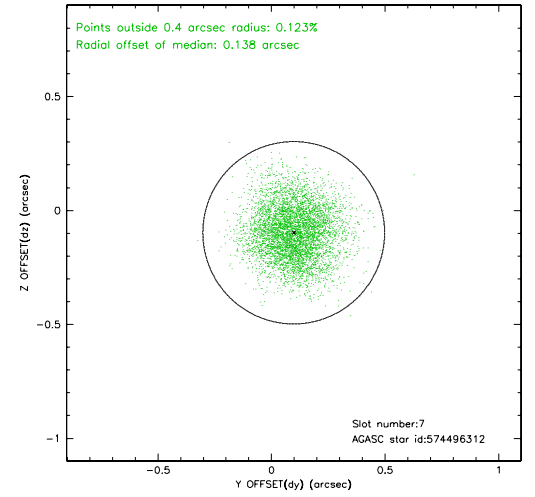
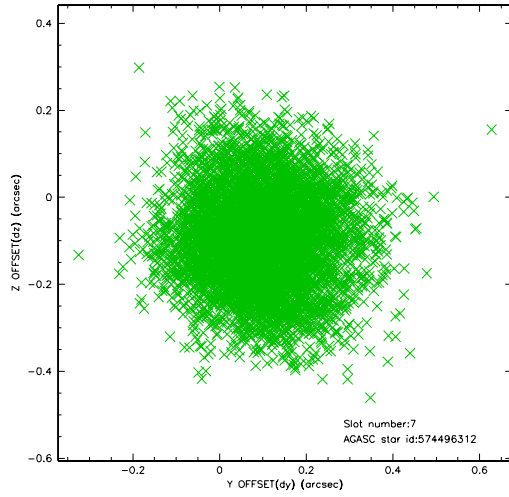
2.4.3 Slot 5



2.4.4 Slot 6

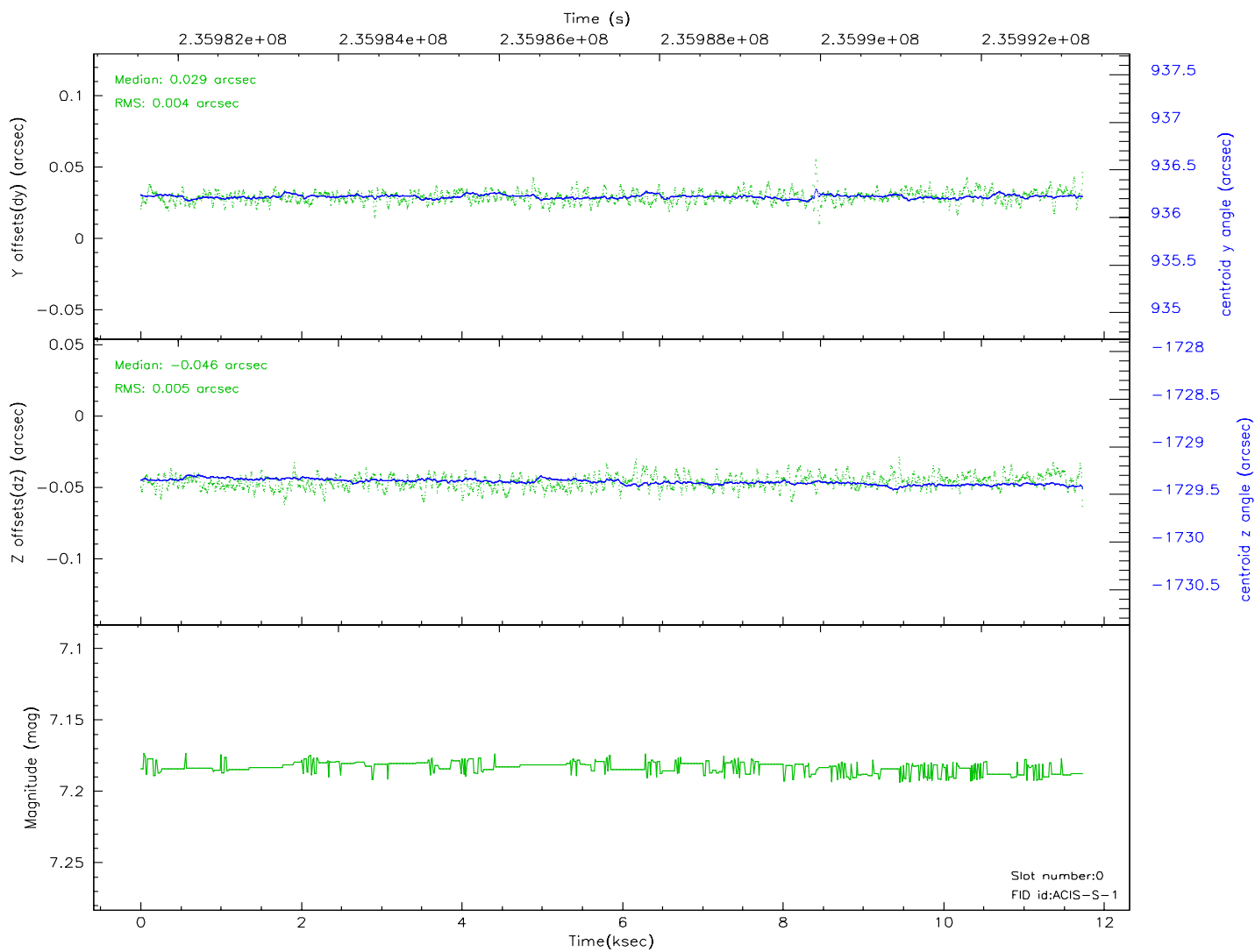
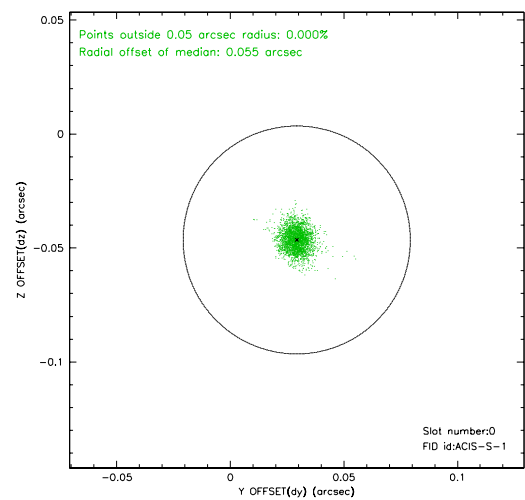
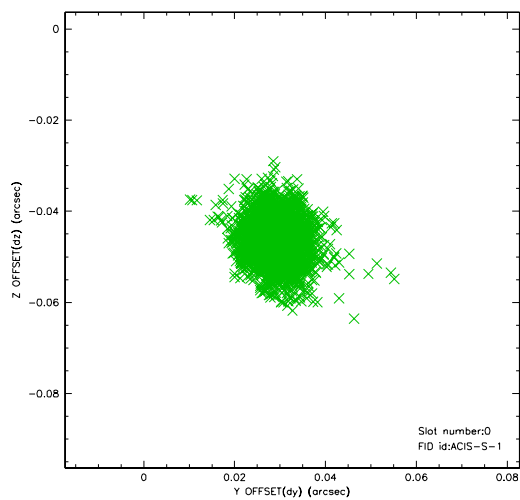


2.4.5 Slot 7

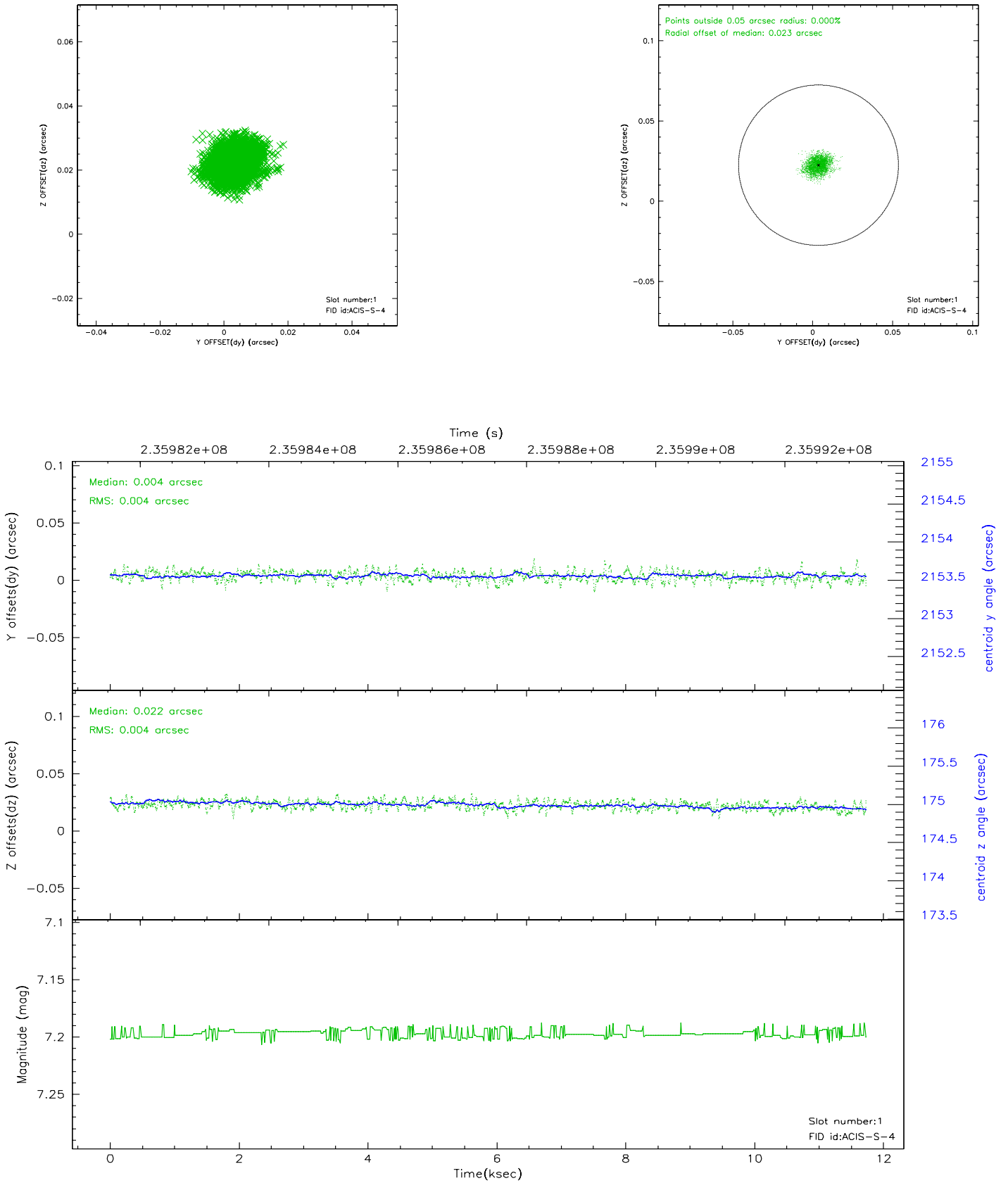


2.5 FID Slots

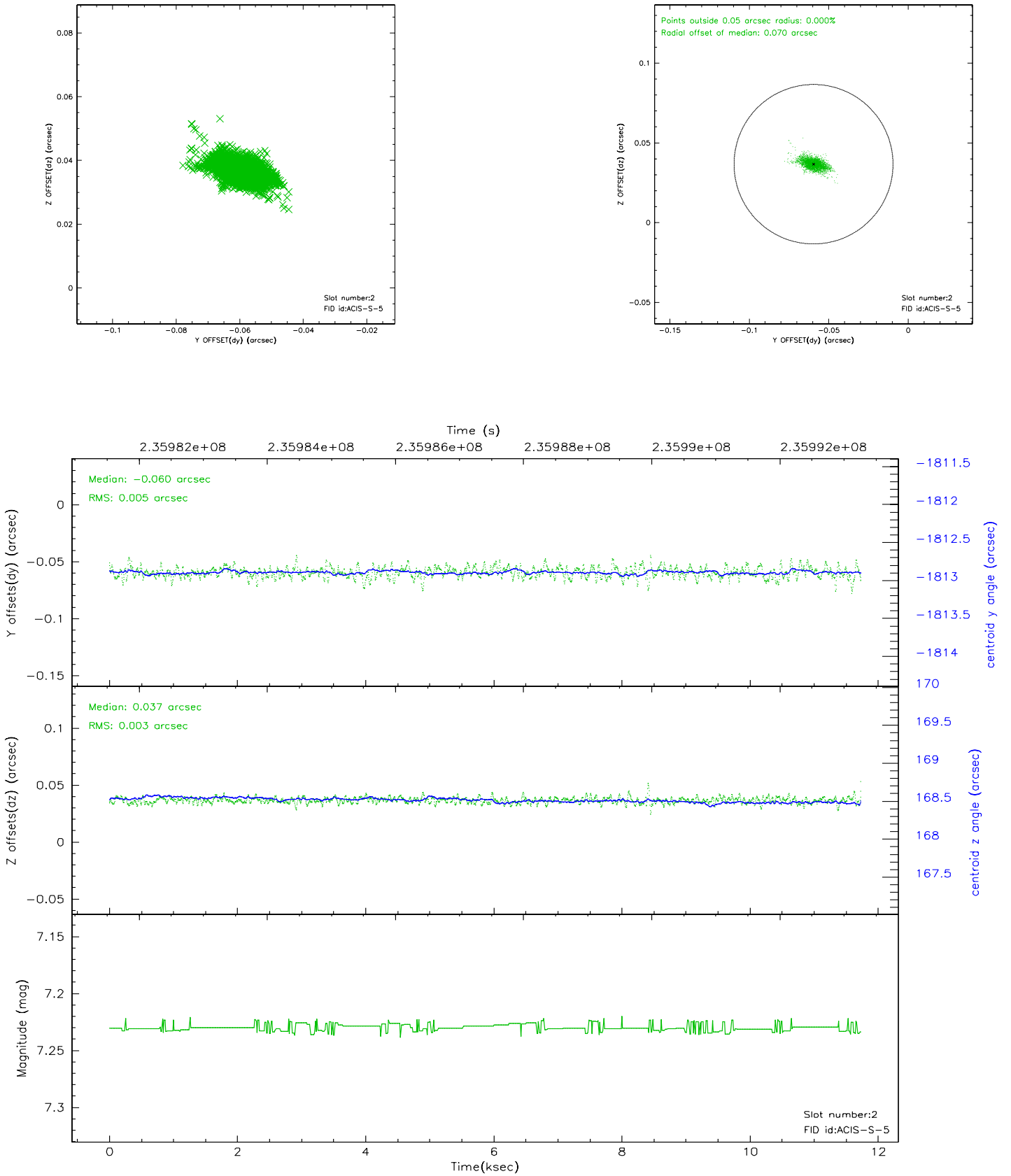
2.5.1 Slot 0



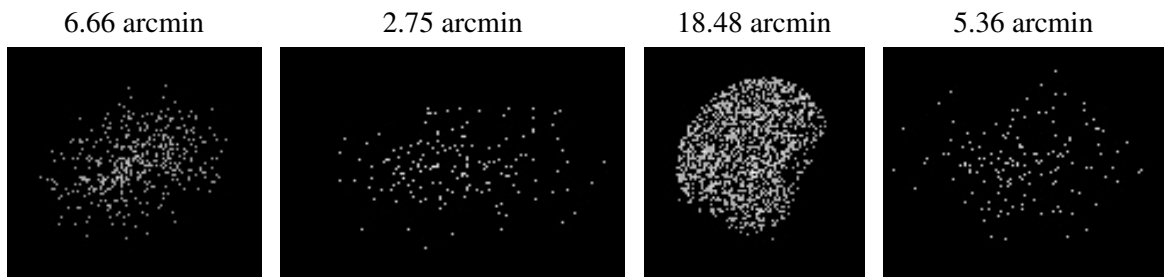
2.5.2 Slot 1



2.5.3 Slot 2



3 Point Sources



A Summary

A.1 Status

V&V Scientist	Jen Lauer
V&V Date (YYYY-MM-DD)	2006.03.13
V&V Edition	1
V&V Disposition and Status	OK
V&V Charge Time	11.72479

A.2 Comments

Preferred roll angle met. Monitor constraint met.