

V&V Reference Report

L2 ASCDS Version : 7.6.7.1

Observation 59385 - L2 Version 002
Chandra X-Ray Center

L2 Processing Date : Apr 2 2006

Contents

1	Front	2
2	OBI	3
2.1	OBI	3
2.1.1	Images	3
2.1.2	Bias	3
2.1.3	Parameters	4
2.1.4	Events	4
2.2	Compared Parameters	5
2.3	Aspect	6
2.4	Star Slots	8
2.5	FID Slots	8
A	Summary	9
A.1	Status	9
A.2	Comments	9

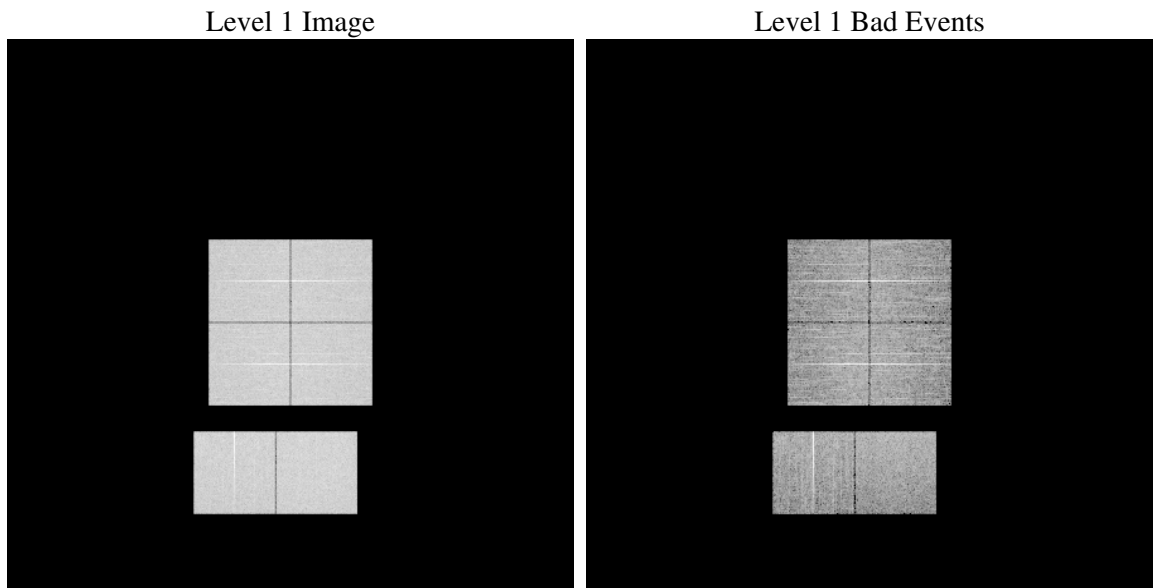
1 Front

seq_num	
obs_id	59385
title	ACIS-012367 diagnostics
observer	CHANDRA engineering request/realtime commanding
object	
dtcycle	0
cycle	P
ra_targ	0.0
dec_targ	0.0
ra_nom	15.997424566428
dec_nom	36.982119221037
roll_nom	190.52077213331
revision	2
ontime	7801.5999709368
livetime	7702.8114145452
ontime0	7801.5999709368
ontime1	7801.5999709368
ontime2	7801.5999709368
ontime3	7801.5999709368
ontime6	7801.5999709368
ontime7	7801.5999709368
l2events	993690

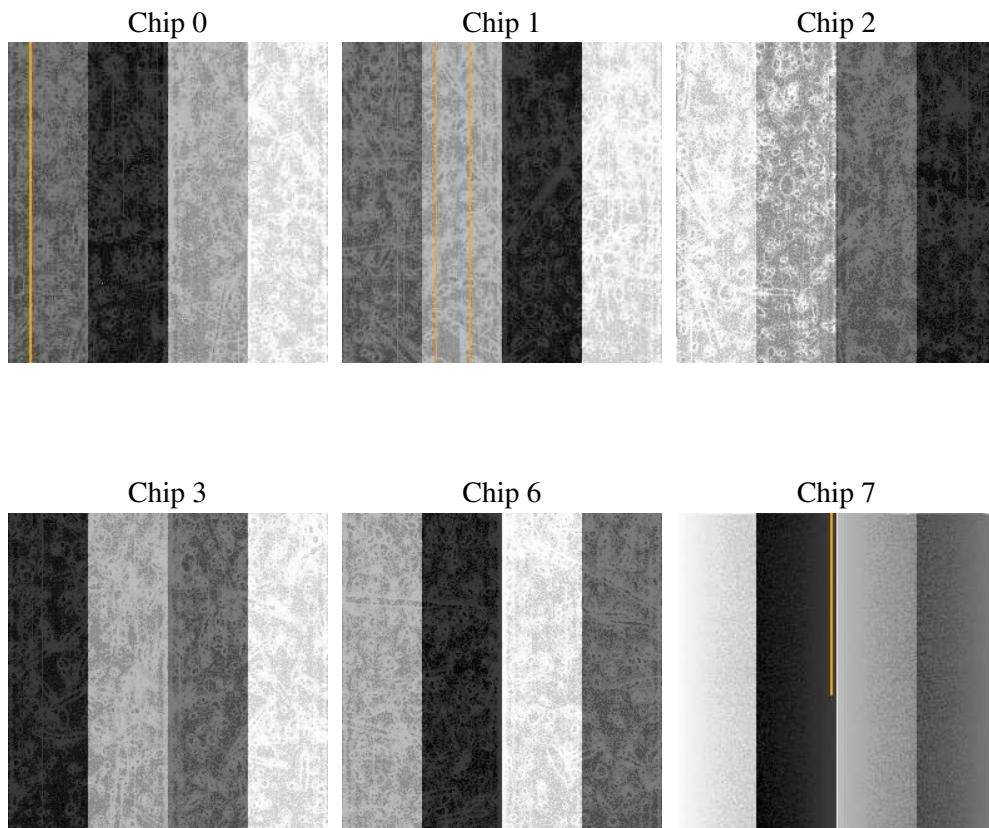
2 OBI

2.1 OBI

2.1.1 Images



2.1.2 Bias



2.1.3 Parameters

obi_num	0
ascdsver	7.6.7.1
caldbver	3.2.1
date	2006-04-02T22:57:20
revision	2

sched_exp_time	0.0
ontime	7804.3375692964
ontime0	7804.3375692964
ontime1	7804.3375692964
ontime2	7804.3375692964
ontime3	7804.3375692964
ontime6	7804.3375692964
ontime7	7804.3375692964
l1events	1393712

2.1.4 Events

	ccd 0	ccd 1	ccd 2	ccd 3	ccd 6	ccd 7
level 1 events	224799	223984	233151	229971	237163	244644
rejected events	55081	54929	62012	58843	58868	58048
rejected %	24%	24%	26%	25%	24%	23%

	ccd 0	ccd 1	ccd 2	ccd 3	ccd 6	ccd 7
grade 0 events	93047	91899	95349	96027	96425	30337
	41%	41%	40%	41%	40%	12%
grade 1 events	526	453	611	615	503	92
	0%	0%	0%	0%	0%	0%
grade 2 events	29634	30349	29063	29200	31188	56407
	13%	13%	12%	12%	13%	23%
grade 3 events	11156	10923	11307	11186	11282	12931
	4%	4%	4%	4%	4%	5%
grade 4 events	11126	10939	11385	11196	11112	12921
	4%	4%	4%	4%	4%	5%
grade 5 events	3351	3545	3177	3719	3755	6613
	1%	1%	1%	1%	1%	2%
grade 6 events	24825	25018	24089	23606	28356	74076
	11%	11%	10%	10%	11%	30%
grade 7 events	51134	50858	58170	54422	54542	51267
	22%	22%	24%	23%	22%	20%

2.2 Compared Parameters

Parameter	Planned	Actual	Parameter	Planned	Actual
Instrument	ACIS	ACIS	Obspar format version number	6	6
Detector	ACIS-012367	ACIS-012367	Obspar file type	PREDICTED	ACTUAL
Grating	NONE	NONE	Obspar update status	NONE	UPDATED
Data mode	FAINT	FAINT	On-chip summing requested	N	N
Observation mode	SECONDARY	SECONDARY	Subarray requested	NONE	NONE
Pointing RA	0	15.99742456642808	Alternating exposures requested	N	N
Pointing Dec	0	36.98211922103683	Primary exposure time	3.2	3.2
Pointing Roll	0.0	190.5207721333082			
SIM focus pos (mm)	-0.782348	-0.7809083437167272			
SIM defocus (mm)	0	0.7524282956875696			
SIM translation stage pos (mm)	-233.592463	250.466033080201			
SIM translation stage offset (mm)	0	-0.01005468664627074			
Observation start time	245816361.971525	245816360.94653			
Observation start date	2005-10-16T02:19:22	2005-10-16T02:19:20			
Observation end time	245826964.572013	245826963.54702			
Observation end date	2005-10-16T05:16:05	2005-10-16T05:16:03			
Read mode	TIMED	TIMED			

2.3 Aspect

2.4 Star Slots

2.5 FID Slots

A Summary

A.1 Status

V&V Scientist	Jen Lauer
V&V Date (YYYY-MM-DD)	2006.04.03
V&V Edition	1
V&V Disposition and Status	OK
V&V Charge Time	7.80159997

A.2 Comments