

V&V Reference Report

L2 ASCDS Version : 8.5

Observation 5925 - L2 Version 4
Chandra X-Ray Center

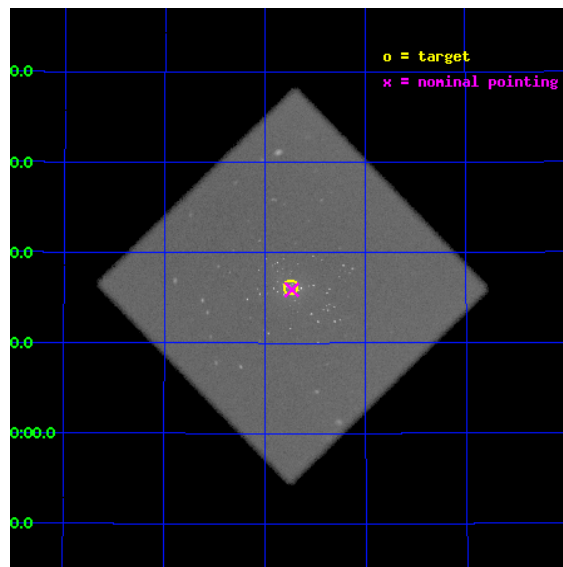
L2 Processing Date : Dec 12 2012

Contents

1	Front	2
2	OBI	3
2.1	OBI	3
2.1.1	Images	3
2.1.2	Parameters	4
2.1.3	Events	4
2.2	Compared Parameters	5
2.3	Aspect	6
2.4	Star Slots	9
2.4.1	Slot 3	9
2.4.2	Slot 4	10
2.4.3	Slot 5	11
2.4.4	Slot 6	12
2.4.5	Slot 7	13
2.5	FID Slots	14
2.5.1	Slot 0	14
2.5.2	Slot 1	15
2.5.3	Slot 2	16
A	Summary	17
A.1	Status	17
A.2	Comments	17

1 Front

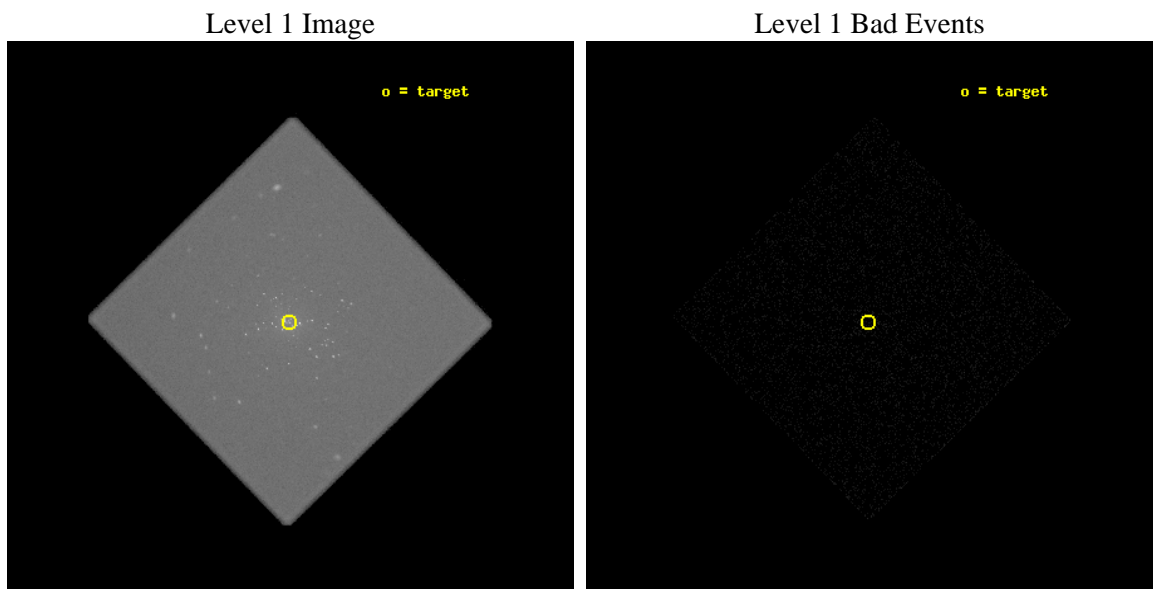
seq_num	600444	Sequence number
obs_id	5925	Observation id
title	M31* - The Nearest Extra-galactic SuperMassive Black Hole	Proposal
observer	Dr. Michael Garcia	Principal investigator
object	M31*	Source name
ra_targ	10.685	Observer's specified target RA [deg]
dec_targ	41.268972	Observer's specified target Dec [deg]
ra_nom	10.682948264058	Nominal RA [deg]
dec_nom	41.26508938544	Nominal Dec [deg]
roll_nom	270.74849843923	Nominal Roll [deg]
revision	4	Processing version of data
ontime	46683.627099514	[s]
livetime	46288.991203801	Ontime multiplied by DTCOR
l2events	2136874	Number of level 2 events



2 OBI

2.1 OBI

2.1.1 Images



2.1.2 Parameters

obi_num	0	Obi number	sched_exp_time	46500.000000	[s] Scheduled observation exposure time
ascdsver	8.5	Processing system revision	ontime	46683.627099514	[s]
caldsver	4.5.4	 	l1events	3220756	Number of level 1 events
date	2012-12-12T13:21:51	Date and time of file creation			
revision	4	Processing version of data			

2.1.3 Events

Level 1 Events

	segment 0
level 1 events	3220756
rejected events	67740
rejected %	2%

2.2 Compared Parameters

Parameter	Planned	Actual
Instrument	HRC	HRC
Detector	HRC-I	HRC-I
Grating	NONE	NONE
Data mode	OBSERVING	OBSERVING
Observation mode	POINTING	POINTING
[deg] Pointing RA	10.663780	10.68294826405772
[deg] Pointing Dec	41.288075	41.26508938544043
[deg] Pointing Roll	270.856630	270.7484984392265
[s] Window start time (MET)	212976064.184000	212976064.184000
[s] Window stop time (MET)	227232064.184000	227232064.184000
[mm] SIM focus pos	-1.040293	-1.038866356238299
[mm] SIM defocus	0	0.001426264420575141
[mm] SIM translation stage pos	126.985494	126.9829799899862
[mm] SIM translation stage offset	0	0.002508901615314585
[s] Observation start time (MET)	218744446.184000	218743736.3263
Observation start date	2004-12-06T18:19:42	2004-12-06T18:08:56
[s] Observation end time (MET)	218790946.184000	218791451.10345
Observation end date	2004-12-07T07:14:42	2004-12-07T07:24:11

Parameter	Planned	Actual
Obspar format version number	7	7
Obspar file type	PREDICTED	ACTUAL
Obspar update status	NONE	UPDATED

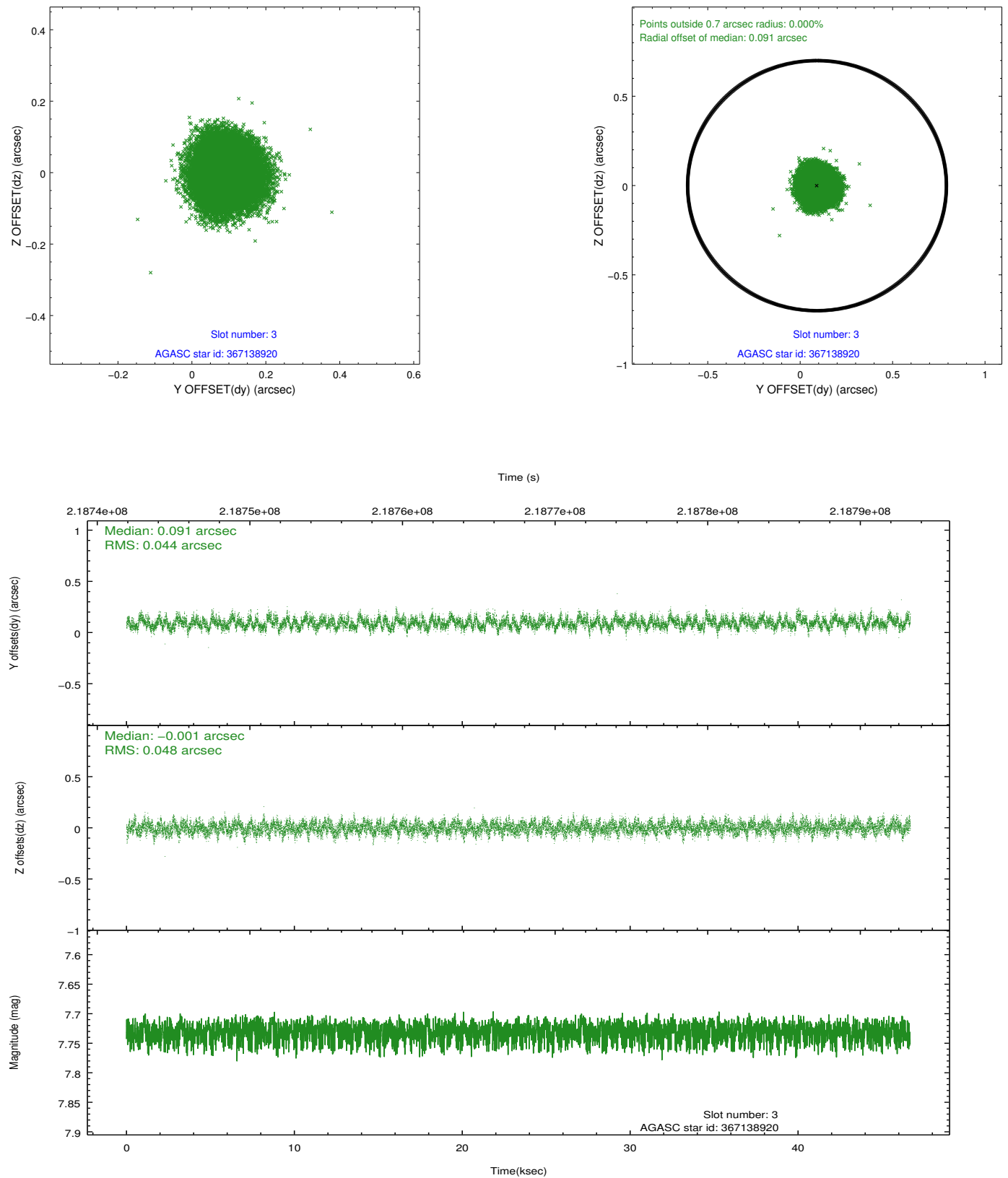
2.3 Aspect

Slot Statistics

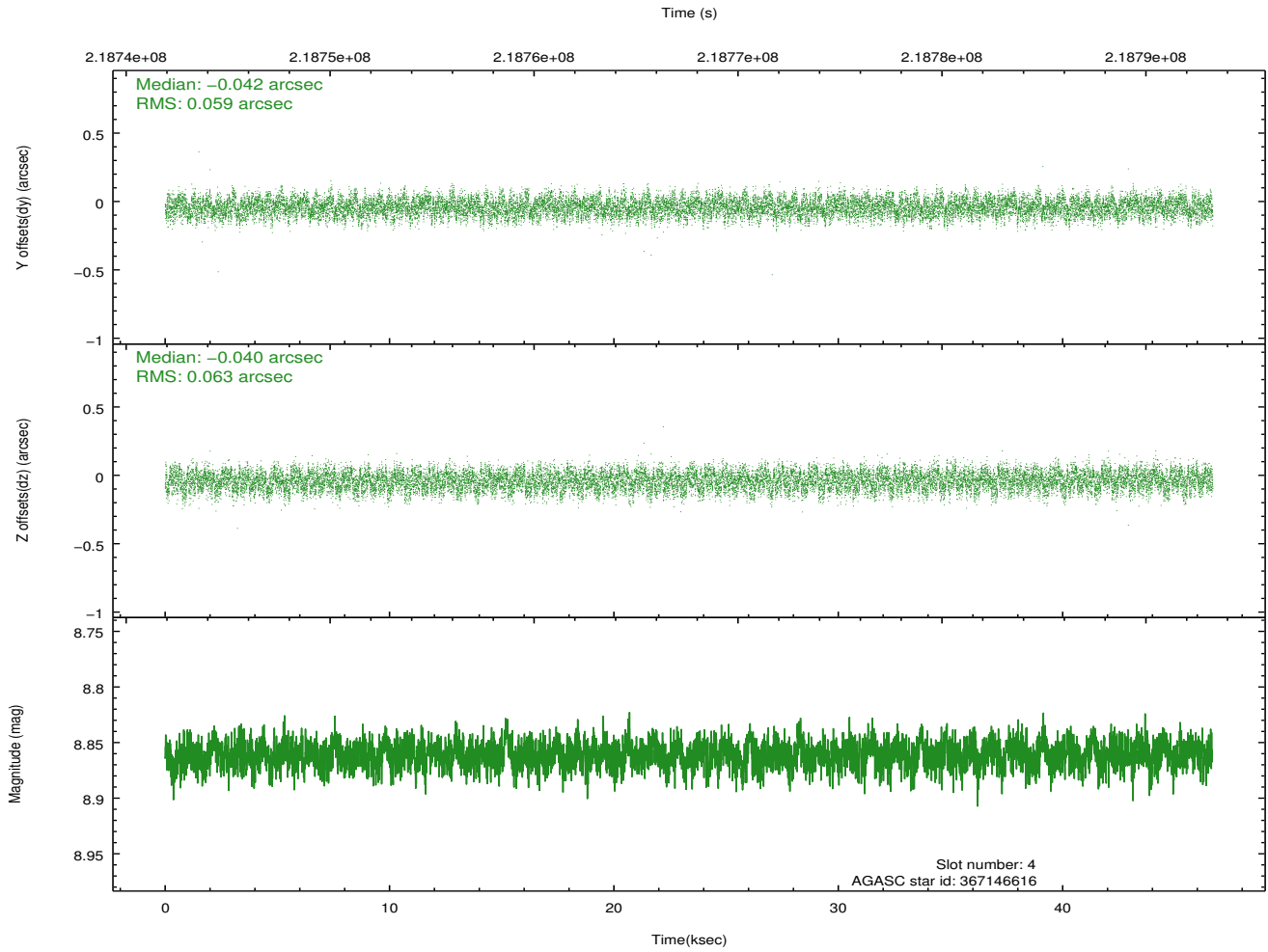
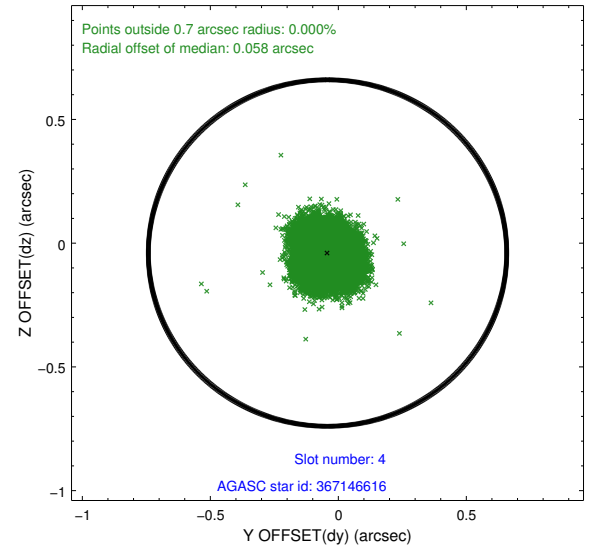
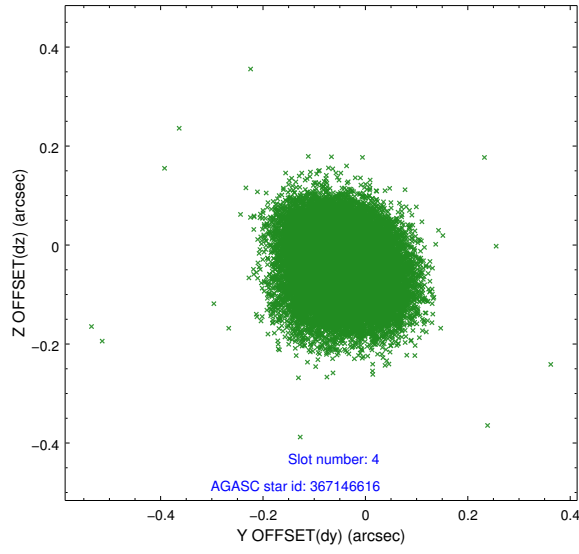
slot	status	id	mag	n_pts	med_dy	med_dz	dr1	dr2	ra	dec	mean_y	mean_z
0	FID	HRC-I-1	6.98	11387	0.010	0.046	0.023	0.040	0.000000	0.000000	-763.05	-1295.53
1	FID	HRC-I-2	7.01	11387	0.119	-0.105	0.029	0.044	0.000000	0.000000	849.63	-1297.38
2	FID	HRC-I-3	7.06	11387	-0.012	-0.030	0.013	0.026	0.000000	0.000000	-1191.45	1008.85
3	GUIDE	367138920	7.73	22773	0.091	-0.001	0.070	0.111	11.513485	40.808909	1748.53	2289.99
4	GUIDE	367146616	8.86	22763	-0.042	-0.040	0.094	0.144	11.418645	41.190163	374.15	2039.63
5	GUIDE	367148872	7.24	22768	-0.001	0.057	0.070	0.113	10.505940	40.688258	2152.85	-462.90
6	GUIDE	367658664	9.61	22757	-0.006	-0.036	0.115	0.187	10.374070	41.369746	-306.62	-778.38
7	GUIDE	367674552	8.85	22748	-0.042	0.023	0.074	0.120	11.016238	41.570845	-1005.53	964.27

2.4 Star Slots

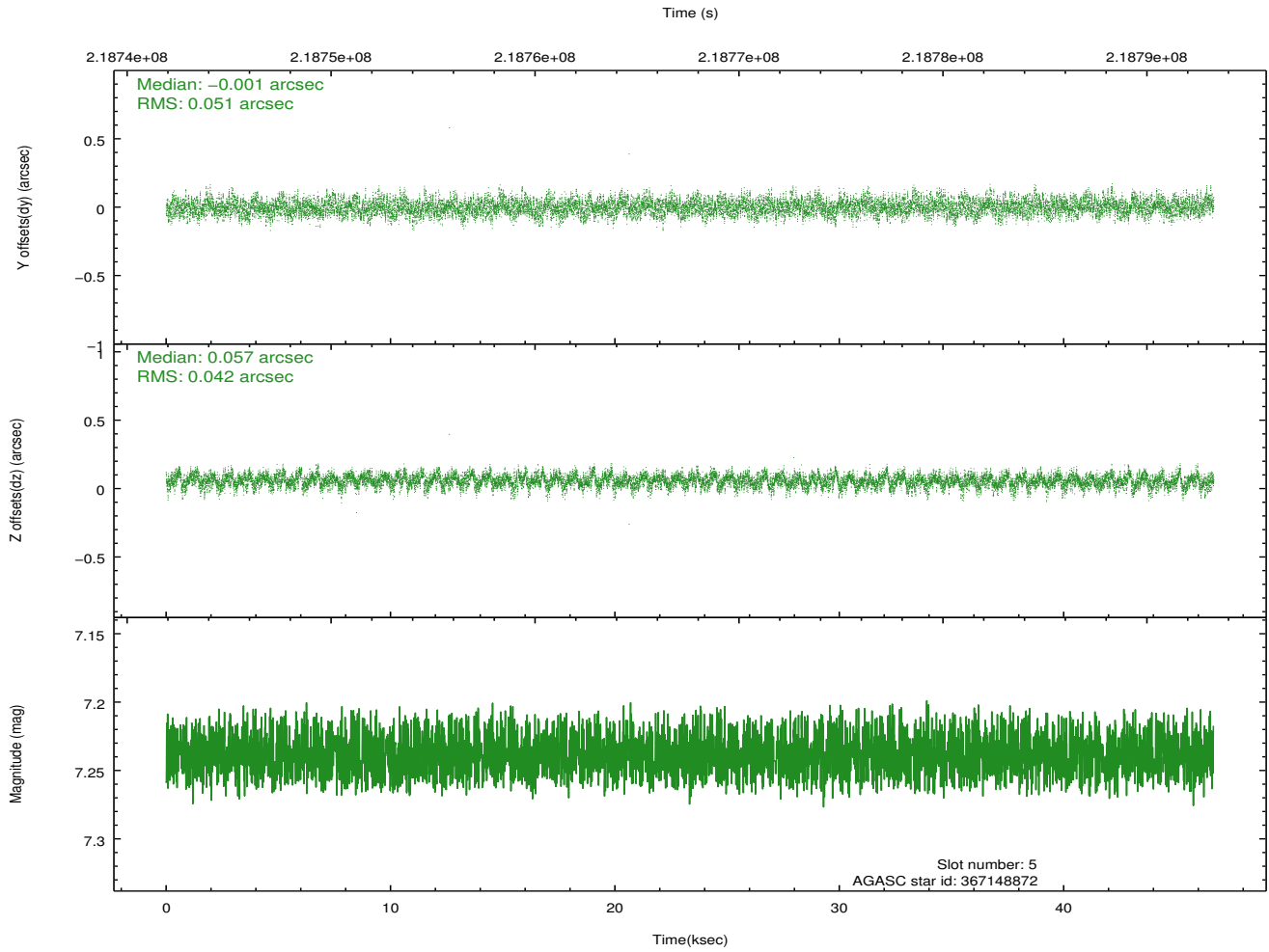
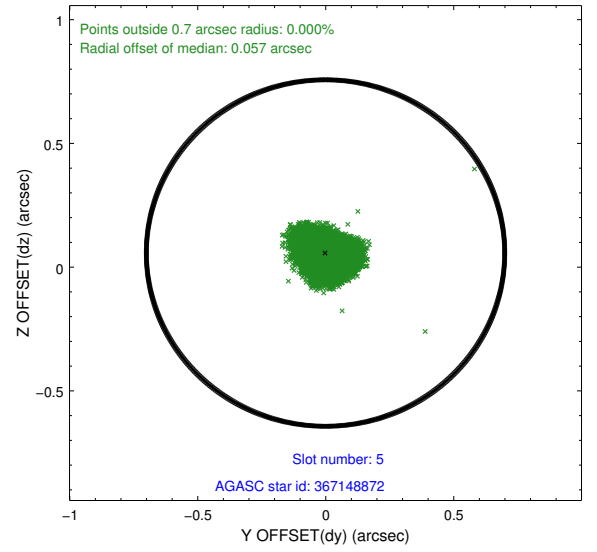
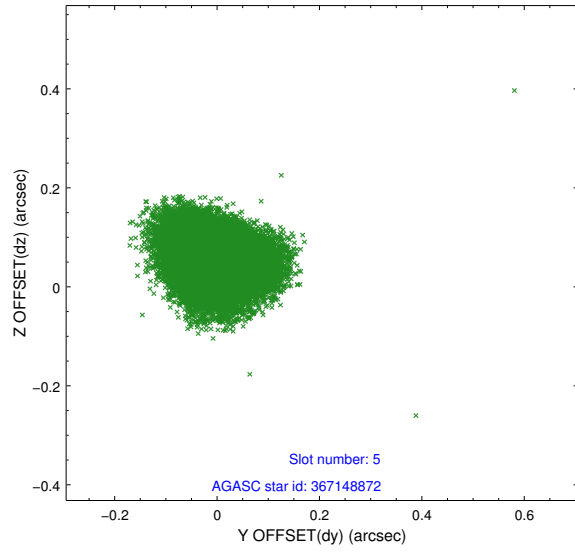
2.4.1 Slot 3



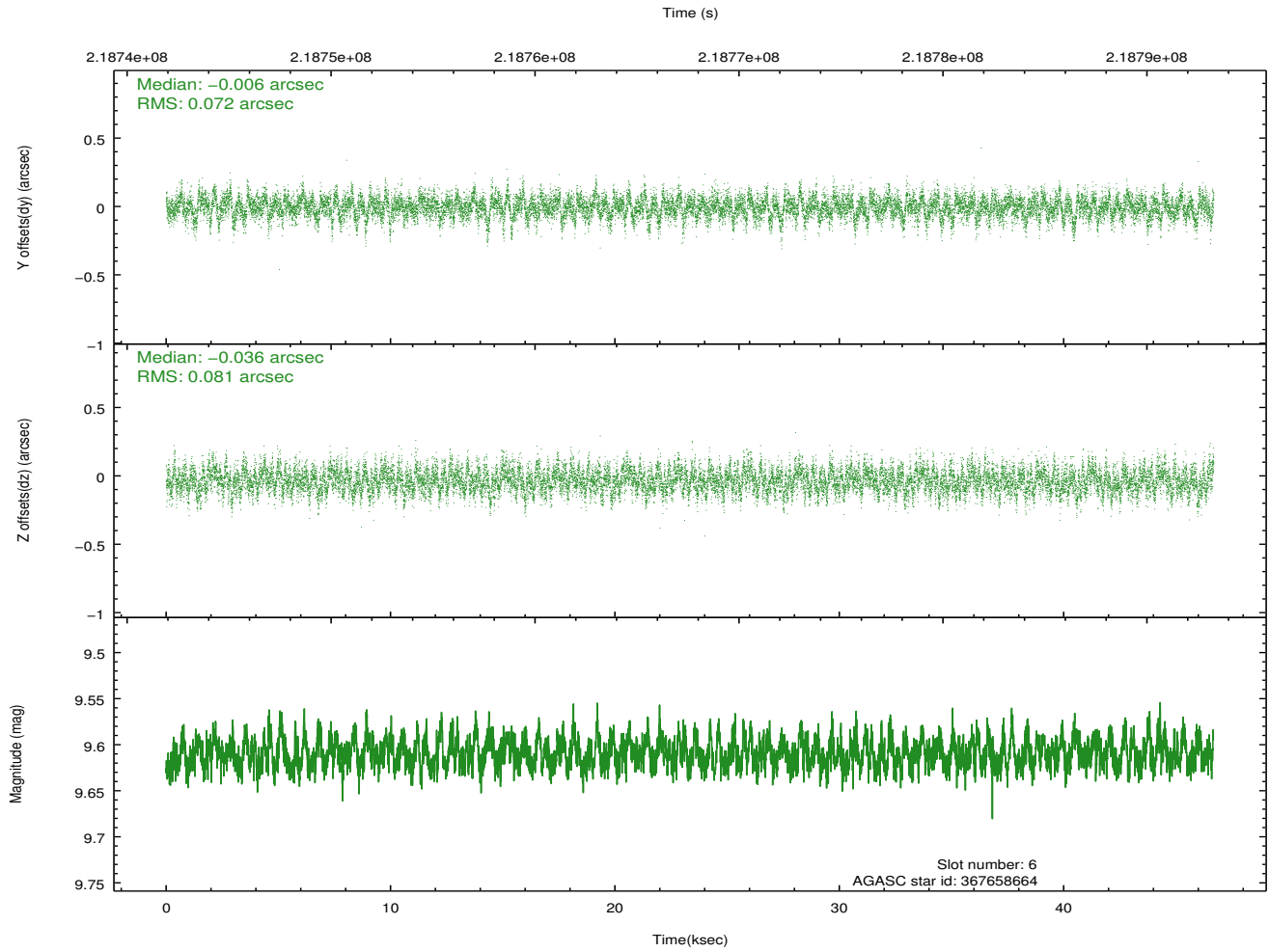
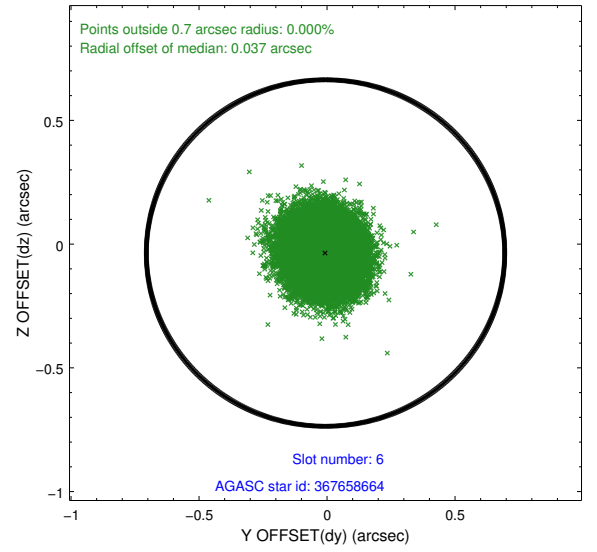
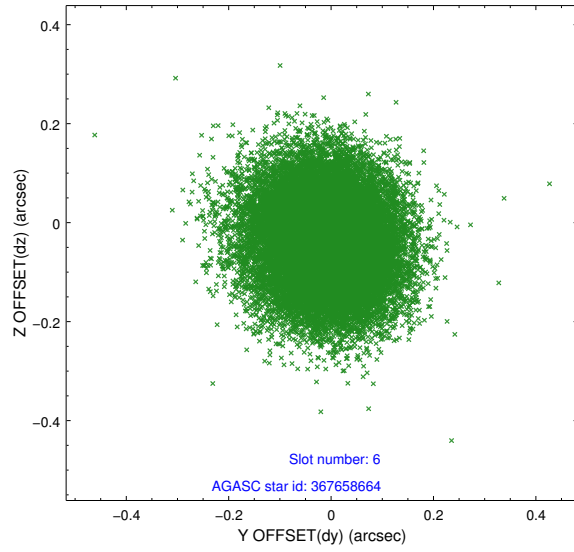
2.4.2 Slot 4



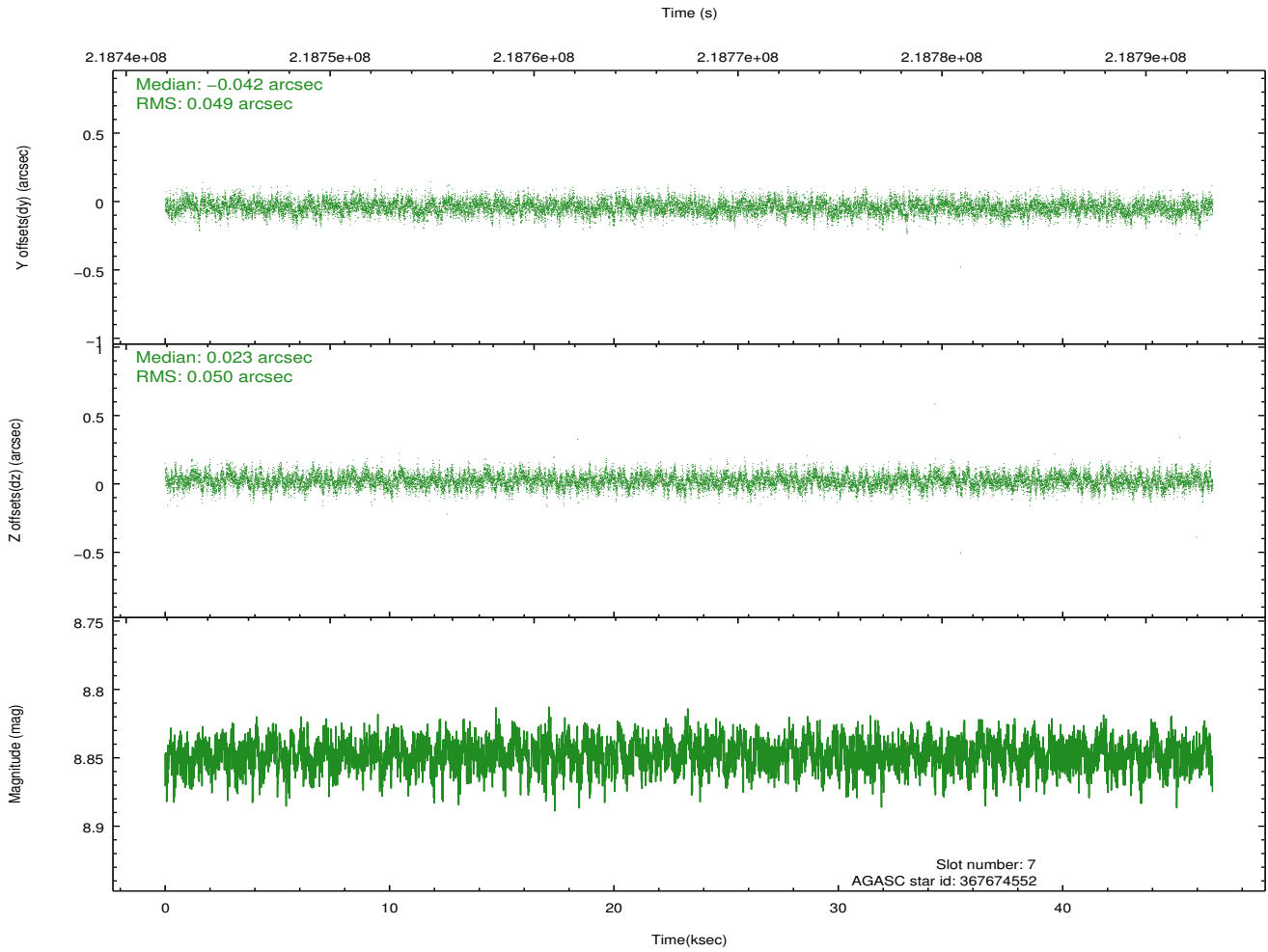
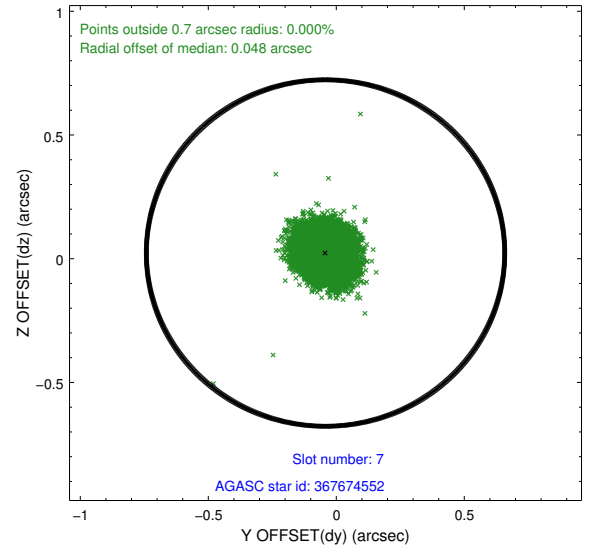
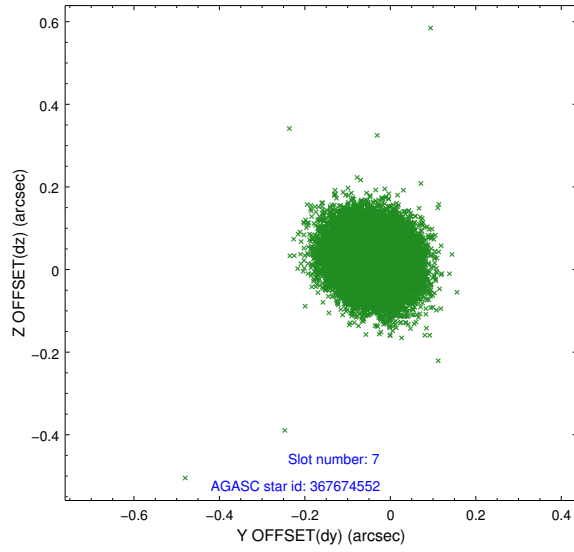
2.4.3 Slot 5



2.4.4 Slot 6

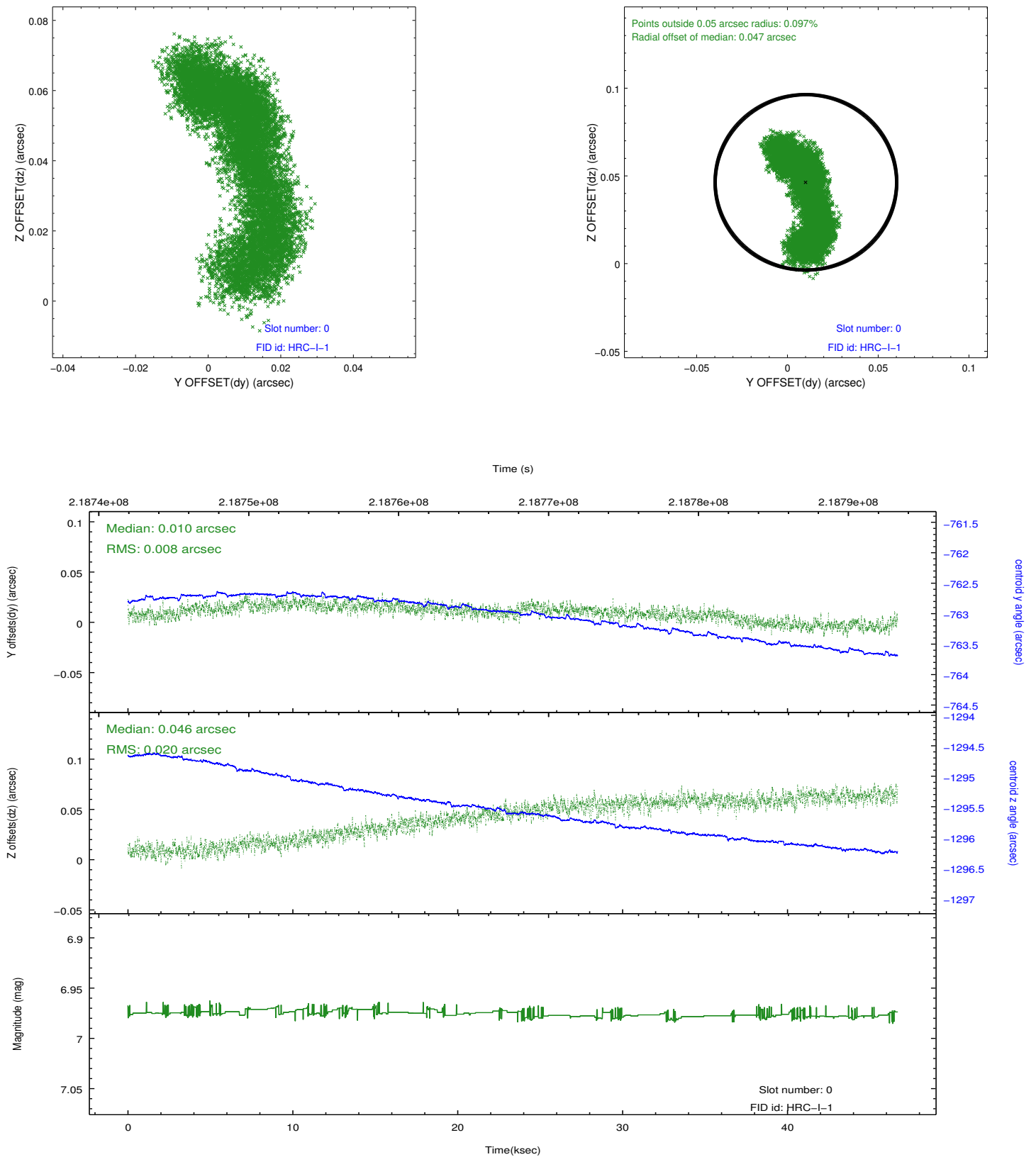


2.4.5 Slot 7

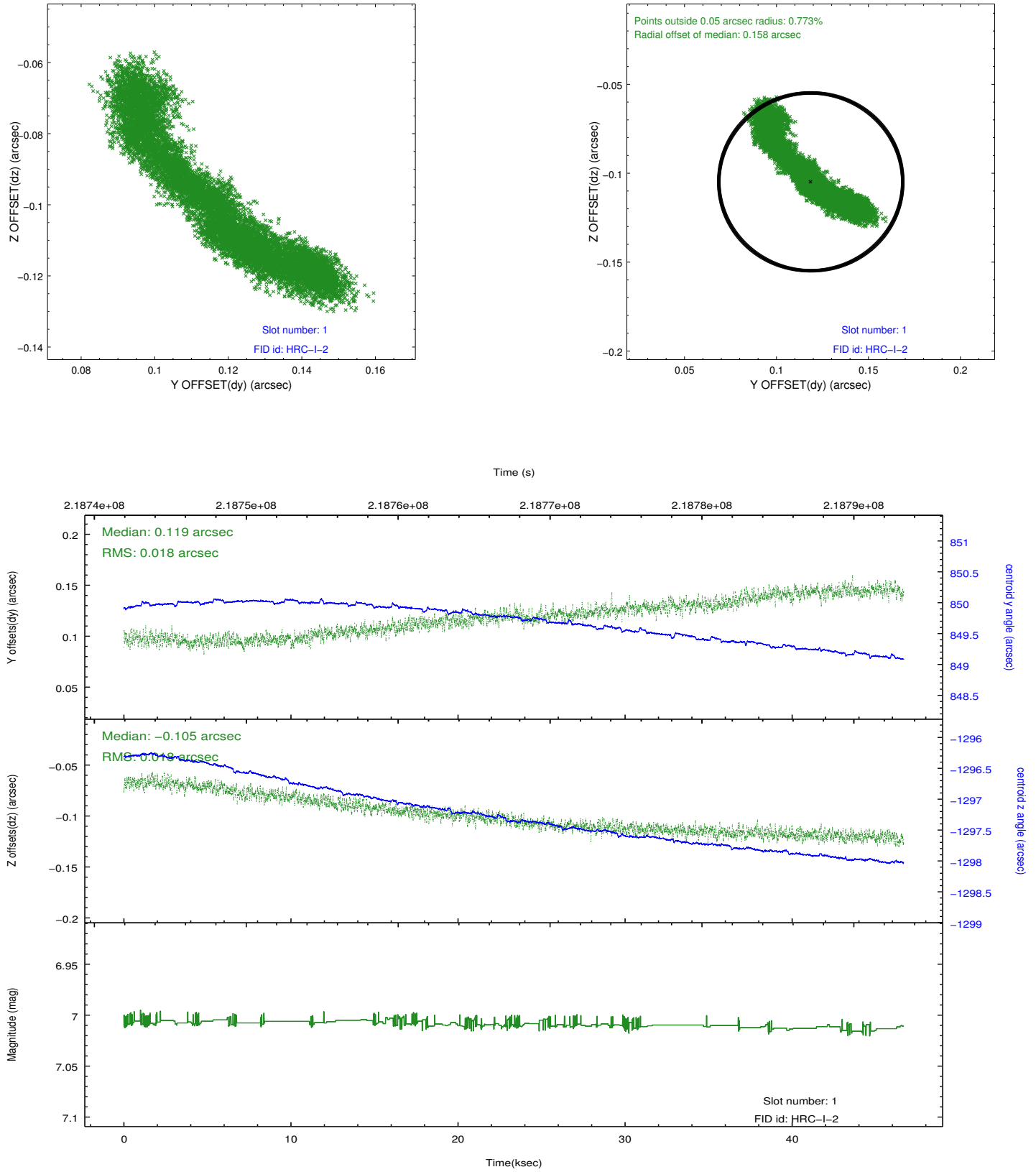


2.5 FID Slots

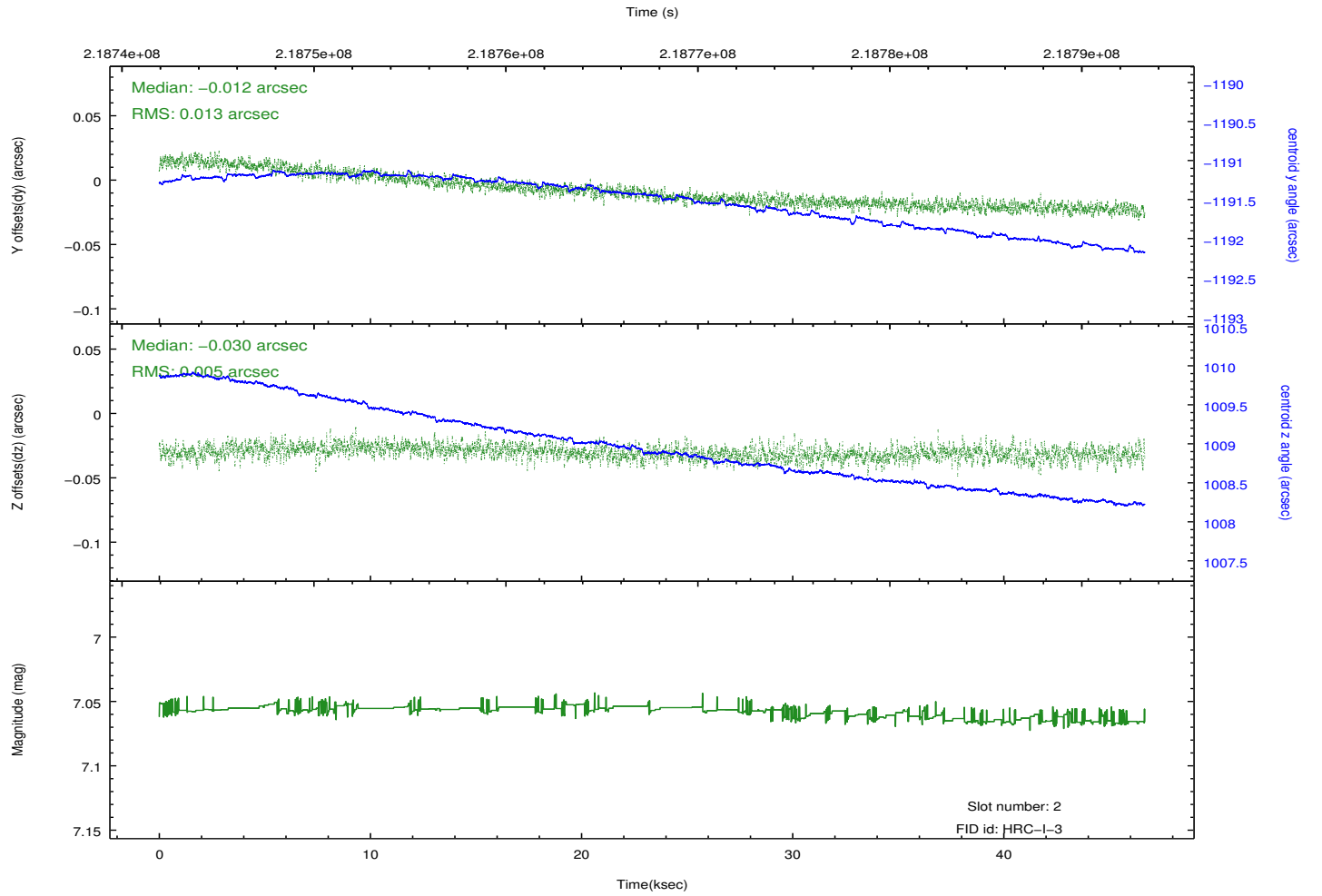
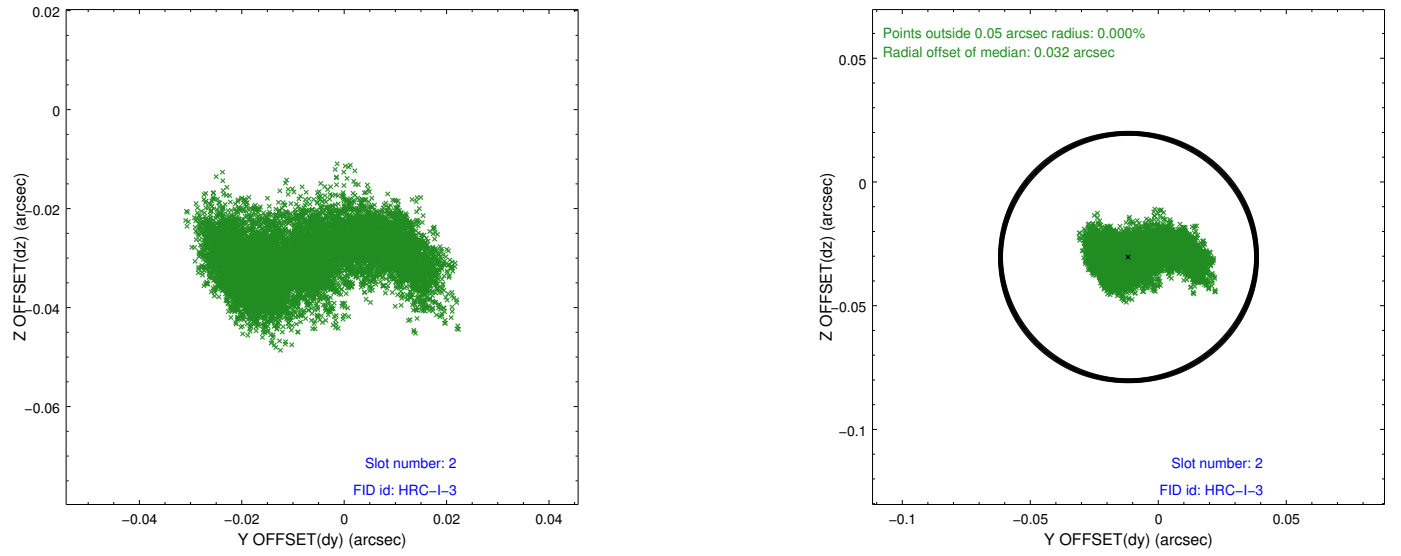
2.5.1 Slot 0



2.5.2 Slot 1



2.5.3 Slot 2



A Summary

A.1 Status

V&V Scientist	Beth Sundheim
V&V Date (YYYY-MM-DD)	2012.12.21
V&V Edition	1
V&V Disposition and Status	OK
V&V Charge Time	46.68362

A.2 Comments

Joint proposal with NRAO.

Window preference met.