

V&V Reference Report

L2 ASCDS Version : 8.4.3.1

Observation 59145 - L2 Version 2
Chandra X-Ray Center

L2 Processing Date : Mar 24 2012

Contents

1	Front	2
2	OBI	3
2.1	OBI	3
2.1.1	Images	3
2.1.2	Bias	3
2.1.3	Parameters	4
2.1.4	Events	4
2.2	Compared Parameters	5
2.3	Star Slots	6
2.4	FID Slots	6
A	Summary	7
A.1	Status	7
A.2	Comments	7

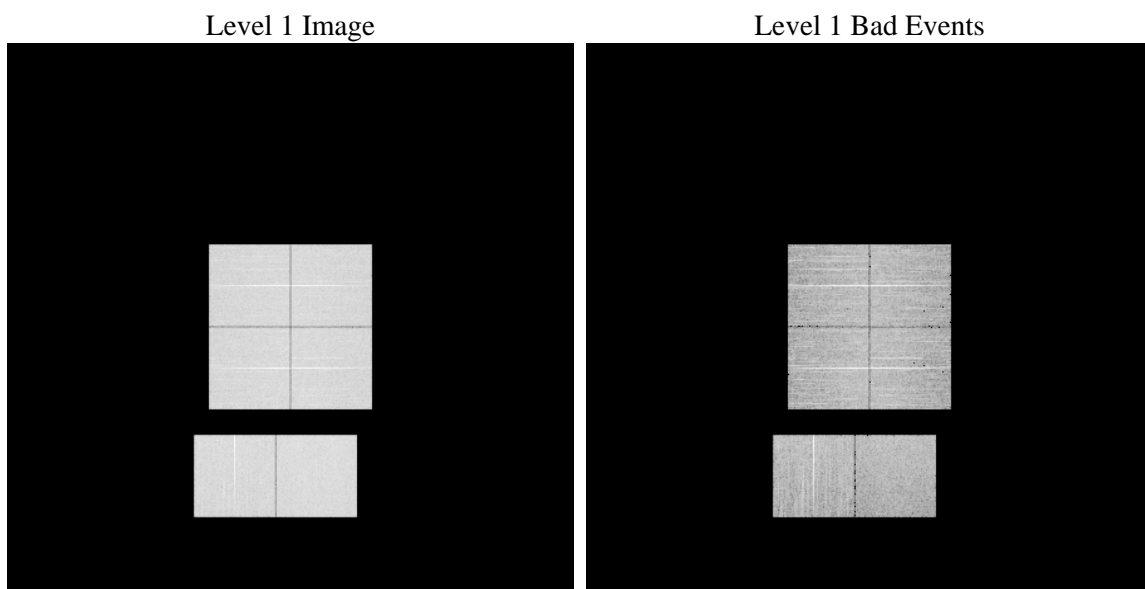
1 Front

seq_num	 	Sequence number
obs_id	59145	Observation id
title	ACIS-012367 diagnostics	Proposal title
observer	CHANDRA engineering request/realtime commanding	Principal investig
object	 	Source name
dtcycle	0	
cycle	P	events from which exps? Prim/Second/Both
ra_targ	0.0	Observer's specified target RA [deg]
dec_targ	0.0	Observer's specified target Dec [deg]
ra_nom	124.02796885742	Nominal RA [deg]
dec_nom	-9.092536447774	Nominal Dec [deg]
roll_nom	342.28001697642	Nominal Roll [deg]
revision	2	Processing version of data
ontime	8251.717702657	Sum of GTIs [s]
livetime	8147.2294845181	Livetime [s]
ontime0	8251.6766626537	Sum of GTIs [s]
ontime1	8251.6356226504	Sum of GTIs [s]
ontime2	8251.5945826471	Sum of GTIs [s]
ontime3	8251.7587426603	Sum of GTIs [s]
ontime6	8251.5535426736	Sum of GTIs [s]
ontime7	8251.717702657	Sum of GTIs [s]
l2events	986202	Number of level 2 events

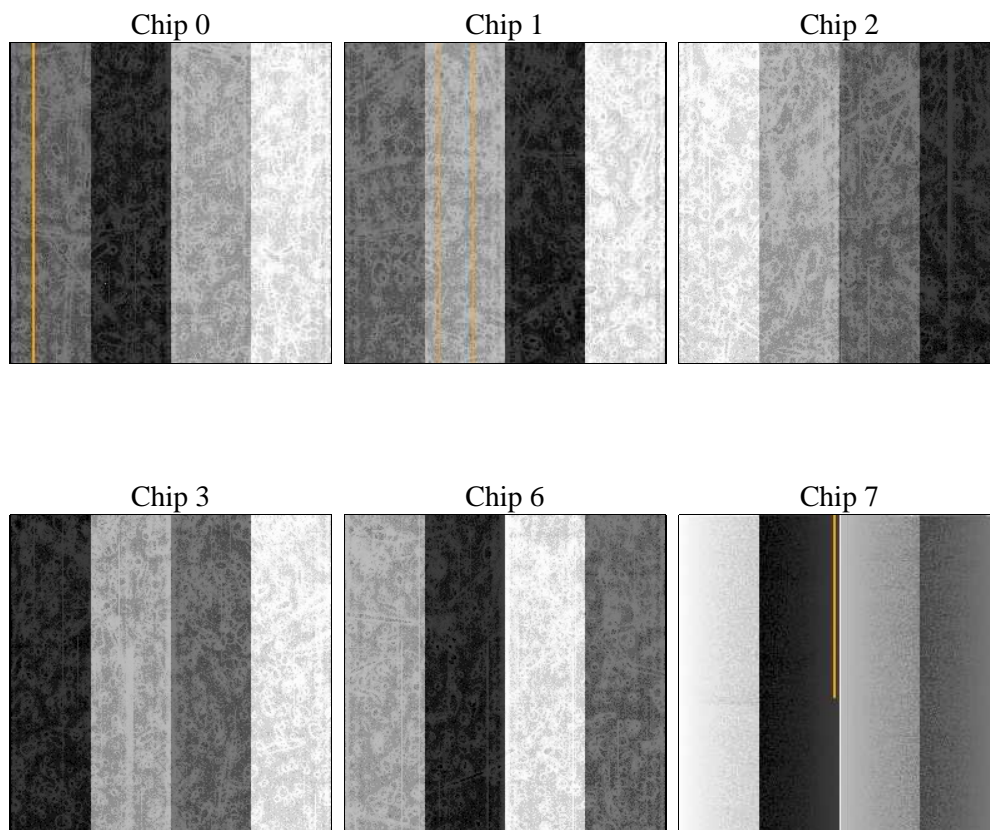
2 OBI

2.1 OBI

2.1.1 Images



2.1.2 Bias



2.1.3 Parameters

obi_num	0	Obi number	sched_exp_time	0.0	[s] Scheduled observation exposure time
ascdsver	8.4.3	Processing system revision	ontime	8251.717702657	Sum of GTIs [s]
caldsver	4.4.8	 	ontime0	8251.6766626537	Sum of GTIs [s]
date	2012-03-24T09:32:56	Date and time of file creation	ontime1	8251.6356226504	Sum of GTIs [s]
revision	2	Processing version of data	ontime2	8251.5945826471	Sum of GTIs [s]
			ontime3	8251.7587426603	Sum of GTIs [s]
			ontime6	8251.5535426736	Sum of GTIs [s]
			ontime7	8251.717702657	Sum of GTIs [s]
			l1events	1426808	Number of level 1 events

2.1.4 Events

	ccd 0	ccd 1	ccd 2	ccd 3	ccd 6	ccd 7		ccd 0	ccd 1	ccd 2	ccd 3	ccd 6	ccd 7
level 1 events	230931	230379	236878	234549	241380	252691	grade 0 events	90905	90969	94433	93918	93930	44468
rejected events	65210	63535	68372	66665	67710	56996		39%	39%	39%	40%	38%	17%
rejected %	28%	27%	28%	28%	28%	22%	grade 1 events	570	493	643	631	520	163
								0%	0%	0%	0%	0%	0%
							grade 2 events	29192	29808	28508	29010	30061	42645
								12%	12%	12%	12%	12%	16%
							grade 3 events	10879	10797	10994	11095	10834	19152
								4%	4%	4%	4%	4%	7%
							grade 4 events	10752	10792	11345	11088	11027	19247
								4%	4%	4%	4%	4%	7%
							grade 5 events	3575	3736	3521	3984	4057	9711
								1%	1%	1%	1%	1%	3%
							grade 6 events	24560	24995	23783	23284	28387	70798
								10%	10%	10%	9%	11%	28%
							grade 7 events	60498	58789	63651	61539	62564	46507
								26%	25%	26%	26%	25%	18%

2.2 Compared Parameters

Parameter	Planned	Actual	Parameter	Planned	Actual
Instrument	ACIS	ACIS	Obspar format version number	7	7
Detector	ACIS-012367	ACIS-012367	Obspar file type	PREDICTED	ACTUAL
Grating	NONE	NONE	Obspar update status	NONE	UPDATED
Data mode	FAINT	FAINT	On-chip summing requested	N	N
Observation mode	SECONDARY	SECONDARY	Subarray requested	NONE	NONE
[deg] Pointing RA	0	124.0279688574207	Alternating exposures requested	N	N
[deg] Pointing Dec	0	-9.092536447773998	[s] Primary exposure time	3.2	3.2
[deg] Pointing Roll	0.0	342.2800169764174			
[mm] SIM focus pos	-0.782348	-0.6828225247311905			
[mm] SIM defocus	0	0.8505141146731063			
[mm] SIM translation stage pos	-233.592463	250.466033080201			
[mm] SIM translation stage offset	0	-0.01005468664627074			
[s] Observation start time (MET)	254998699.846068	254998698.82108			
Observation start date	2006-01-30T08:58:20	2006-01-30T08:58:18			
[s] Observation end time (MET)	255020009.597056	255020008.57207			
Observation end date	2006-01-30T14:53:30	2006-01-30T14:53:28			
Read mode	TIMED	TIMED			

2.3 Star Slots

2.4 FID Slots

A Summary

A.1 Status

V&V Scientist	Jen Lauer
V&V Date (YYYY-MM-DD)	2012.03.26
V&V Edition	1
V&V Disposition and Status	OK
V&V Charge Time	8.251717702657

A.2 Comments