

# V&V Reference Report

## L2 ASCDS Version : 8.4.3.1

Observation 58815 - L2 Version 2  
Chandra X-Ray Center

L2 Processing Date : Apr 7 2012

## Contents

<b>1</b>	<b>Front</b>	<b>2</b>
<b>2</b>	<b>OBI</b>	<b>3</b>
2.1	OBI . . . . .	3
2.1.1	Images . . . . .	3
2.1.2	Bias . . . . .	3
2.1.3	Parameters . . . . .	4
2.1.4	Events . . . . .	4
2.2	Compared Parameters . . . . .	5
2.3	Star Slots . . . . .	6
2.4	FID Slots . . . . .	6
<b>A</b>	<b>Summary</b>	<b>7</b>
A.1	Status . . . . .	7
A.2	Comments . . . . .	7

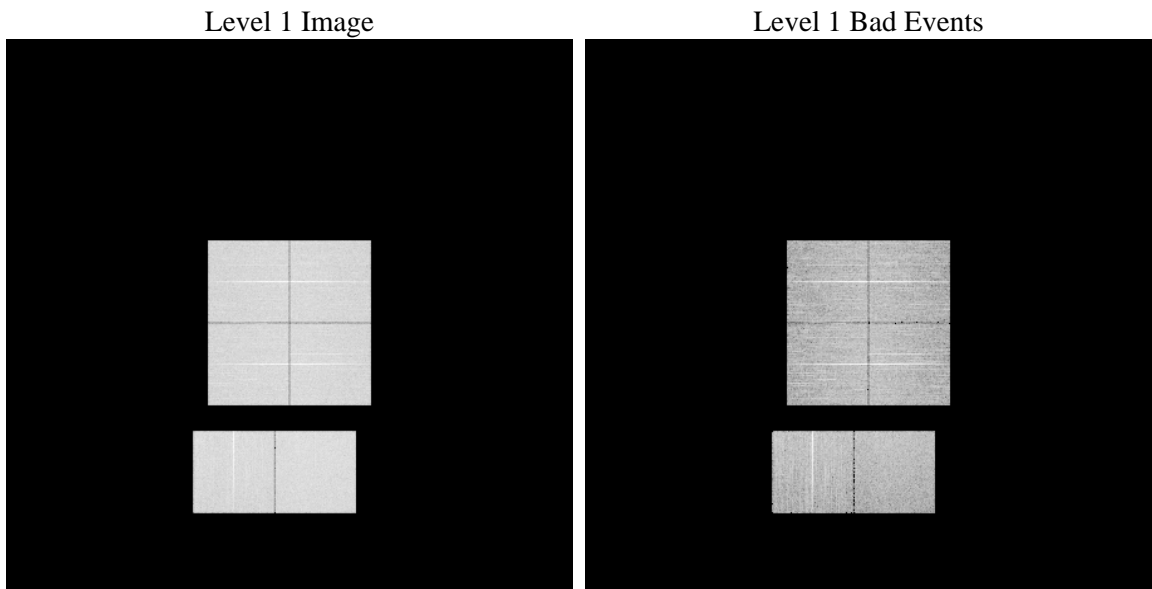
# 1 Front

seq_num	&#160	Sequence number
obs_id	58815	Observation id
title	ACIS-012367 diagnostics	Proposal title
observer	CHANDRA engineering request/realtime commanding	Principal investig
object	&#160	Source name
dtycle	0	&#160
cycle	P	events from which exps? Prim/Second/Both
ra_targ	0.0	Observer's specified target RA [deg]
dec_targ	0.0	Observer's specified target Dec [deg]
ra_nom	303.01601471987	Nominal RA [deg]
dec_nom	-9.0246979057265	Nominal Dec [deg]
roll_nom	263.5184977198	Nominal Roll [deg]
revision	2	Processing version of data
ontime	8274.2990489602	Sum of GTIs [s]
livetime	8169.5248922175	Livetime [s]
ontime0	8276.9793740511	Sum of GTIs [s]
ontime1	8276.9383340478	Sum of GTIs [s]
ontime2	8276.8972940445	Sum of GTIs [s]
ontime3	8274.2990291119	Sum of GTIs [s]
ontime6	8276.8562540412	Sum of GTIs [s]
ontime7	8274.2990489602	Sum of GTIs [s]
l2events	894503	Number of level 2 events

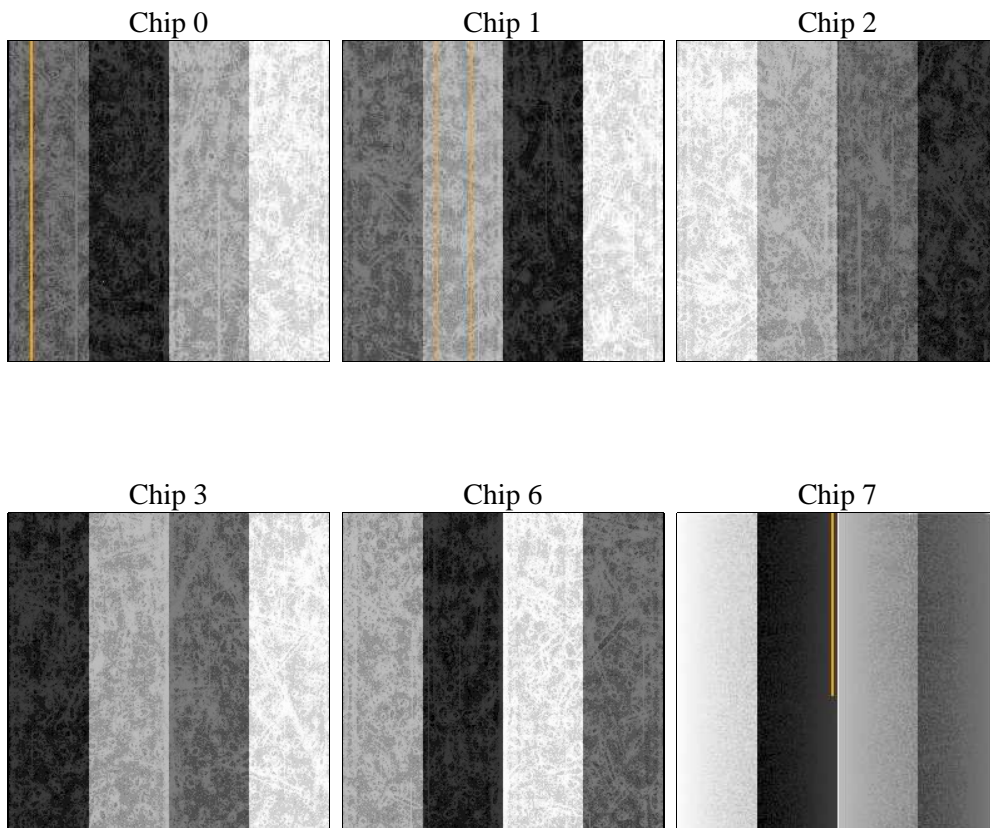
## 2 OBI

### 2.1 OBI

#### 2.1.1 Images



#### 2.1.2 Bias



### 2.1.3 Parameters

obi_num	0	Obi number	sched_exp_time	0.0	[s] Scheduled observation exposure time
ascdsver	8.4.3.1	Processing system revision	ontime	8274.2990489602	Sum of GTIs [s]
caldsver	4.4.9	&#160	ontime0	8276.9793740511	Sum of GTIs [s]
date	2012-04-08T01:32:24	Date and time of file creation	ontime1	8276.9383340478	Sum of GTIs [s]
revision	2	Processing version of data	ontime2	8276.8972940445	Sum of GTIs [s]
			ontime3	8274.2990291119	Sum of GTIs [s]
			ontime6	8276.8562540412	Sum of GTIs [s]
			ontime7	8274.2990489602	Sum of GTIs [s]
			l1events	1336648	Number of level 1 events

### 2.1.4 Events

	ccd 0	ccd 1	ccd 2	ccd 3	ccd 6	ccd 7		ccd 0	ccd 1	ccd 2	ccd 3	ccd 6	ccd 7
level 1 events	212652	213507	219349	221827	228046	241267	grade 0 events	81230	81035	83871	84308	83735	40590
rejected events	63276	62892	67909	69878	70990	59565		38%	37%	38%	38%	36%	16%
rejected %	29%	29%	30%	31%	31%	24%	grade 1 events	564	462	610	639	494	164
								0%	0%	0%	0%	0%	0%
							grade 2 events	26257	27227	25732	25831	27359	39313
								12%	12%	11%	11%	11%	16%
							grade 3 events	9852	9676	9784	10122	9941	17821
								4%	4%	4%	4%	4%	7%
							grade 4 events	9701	9823	10073	10070	9849	17389
								4%	4%	4%	4%	4%	7%
							grade 5 events	3829	3924	3607	4252	4158	10237
								1%	1%	1%	1%	1%	4%
							grade 6 events	22336	22854	21980	21618	26172	66589
								10%	10%	10%	9%	11%	27%
							grade 7 events	58883	58506	63692	64987	66338	49164
								27%	27%	29%	29%	29%	20%

## 2.2 Compared Parameters

Parameter	Planned	Actual
Instrument	ACIS	ACIS
Detector	ACIS-012367	ACIS-012367
Grating	NONE	NONE
Data mode	FAINT	FAINT
Observation mode	SECONDARY	SECONDARY
[deg] Pointing RA	0	303.0160147198717
[deg] Pointing Dec	0	-9.024697905726464
[deg] Pointing Roll	0.0	263.5184977198043
[mm] SIM focus pos	-0.782348	-1.428180813131781
[mm] SIM defocus	0	0.1051558262725154
[mm] SIM translation stage pos	-233.592463	250.466033080201
[mm] SIM translation stage offset	0	-0.01005468664627074
[s] Observation start time (MET)	272814035.027583	272814034.0026
Observation start date	2006-08-24T13:40:35	2006-08-24T13:40:34
[s] Observation end time (MET)	272837747.378697	272837746.35372
Observation end date	2006-08-24T20:15:47	2006-08-24T20:15:46
Read mode	TIMED	TIMED

Parameter	Planned	Actual
Obspar format version number	7	7
Obspar file type	PREDICTED	ACTUAL
Obspar update status	NONE	UPDATED
On-chip summing requested	N	N
Subarray requested	NONE	NONE
Alternating exposures requested	N	N
[s] Primary exposure time	3.2	3.2

## **2.3 Star Slots**

## **2.4 FID Slots**

## A Summary

### A.1 Status

V&V Scientist	Jen Lauer
V&V Date (YYYY-MM-DD)	2012.04.08
V&V Edition	1
V&V Disposition and Status	OK
V&V Charge Time	8.2742990489602

### A.2 Comments