

V&V Reference Report

L2 ASCDS Version : 8.4.3.1

Observation 58615 - L2 Version 2
Chandra X-Ray Center

L2 Processing Date : Apr 16 2012

Contents

1	Front	2
2	OBI	3
2.1	OBI	3
2.1.1	Images	3
2.1.2	Bias	3
2.1.3	Parameters	4
2.1.4	Events	4
2.2	Compared Parameters	5
2.3	Star Slots	6
2.4	FID Slots	6
A	Summary	7
A.1	Status	7
A.2	Comments	7

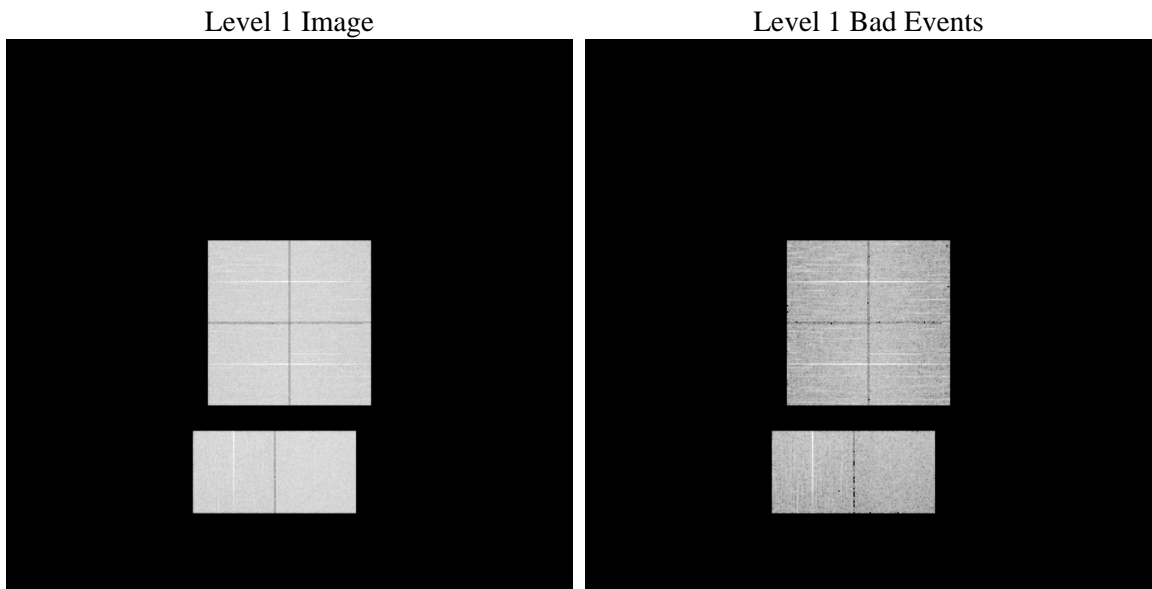
1 Front

seq_num	 	Sequence number
obs_id	58615	Observation id
title	ACIS-012367 diagnostics	Proposal title
observer	CHANDRA engineering request/realtime commanding	Principal investig
object	 	Source name
dtcycle	0	
cycle	P	events from which exps? Prim/Second/Both
ra_targ	0.0	Observer's specified target RA [deg]
dec_targ	0.0	Observer's specified target Dec [deg]
ra_nom	111.0175955893	Nominal RA [deg]
dec_nom	-4.9771762640797	Nominal Dec [deg]
roll_nom	19.488843819559	Nominal Roll [deg]
revision	2	Processing version of data
ontime	7324.5773839355	Sum of GTIs [s]
livetime	7231.8291747691	Livetime [s]
ontime0	7324.5363439322	Sum of GTIs [s]
ontime1	7324.4953039289	Sum of GTIs [s]
ontime2	7324.4542639256	Sum of GTIs [s]
ontime3	7324.6184239388	Sum of GTIs [s]
ontime6	7324.4132239223	Sum of GTIs [s]
ontime7	7324.5773839355	Sum of GTIs [s]
l2events	709917	Number of level 2 events

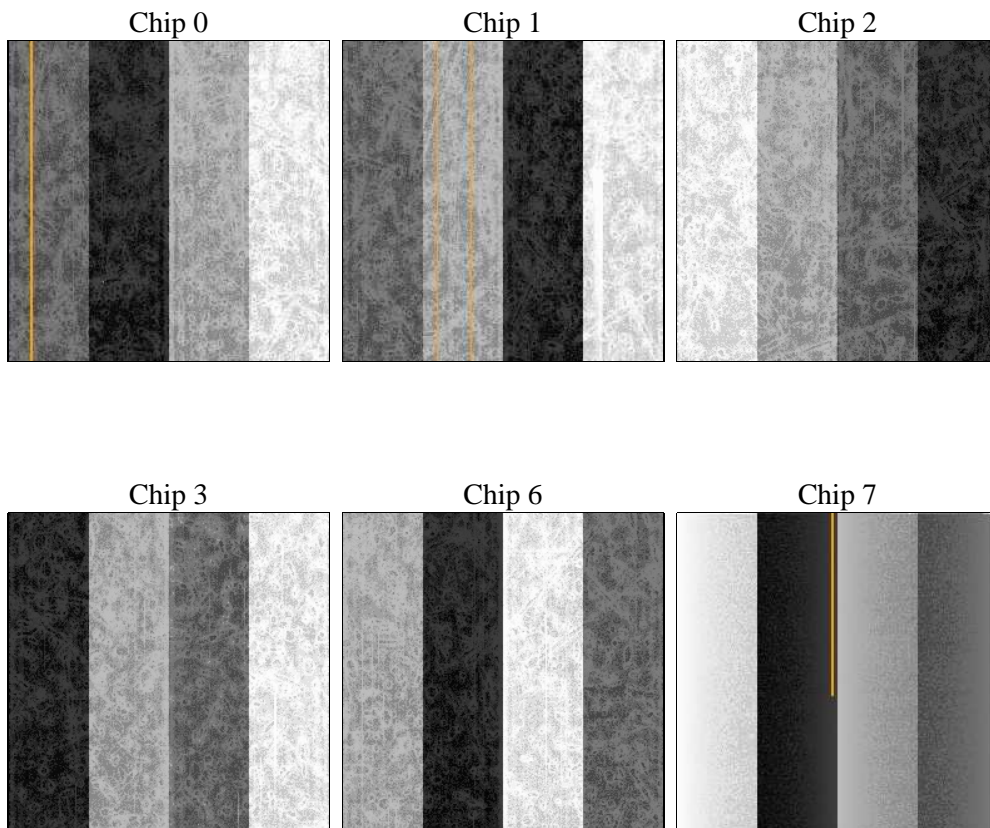
2 OBI

2.1 OBI

2.1.1 Images



2.1.2 Bias



2.1.3 Parameters

obi_num	0	Obi number	sched_exp_time	0.0	[s] Scheduled observation exposure time
ascdsver	8.4.3.1	Processing system revision	ontime	7324.5773839355	Sum of GTIs [s]
caldsver	4.4.9	 	ontime0	7324.5363439322	Sum of GTIs [s]
date	2012-04-16T08:38:47	Date and time of file creation	ontime1	7324.4953039289	Sum of GTIs [s]
revision	2	Processing version of data	ontime2	7324.4542639256	Sum of GTIs [s]
			ontime3	7324.6184239388	Sum of GTIs [s]
			ontime6	7324.4132239223	Sum of GTIs [s]
			ontime7	7324.5773839355	Sum of GTIs [s]
			l1events	1116260	Number of level 1 events

2.1.4 Events

	ccd 0	ccd 1	ccd 2	ccd 3	ccd 6	ccd 7		ccd 0	ccd 1	ccd 2	ccd 3	ccd 6	ccd 7
level 1 events	179340	177887	182737	184645	188877	202774	grade 0 events	64795	64171	66342	67285	66758	32459
rejected events	61062	59114	63740	64196	65011	54992		36%	36%	36%	36%	35%	16%
rejected %	34%	33%	34%	34%	34%	27%	grade 1 events	444	331	485	449	360	143
								0%	0%	0%	0%	0%	0%
							grade 2 events	20796	21813	20161	20496	21808	32423
								11%	12%	11%	11%	11%	15%
							grade 3 events	7846	7758	7958	8168	7800	14325
								4%	4%	4%	4%	4%	7%
							grade 4 events	7706	7652	8062	8117	7845	14234
								4%	4%	4%	4%	4%	7%
							grade 5 events	3447	3473	3201	3736	3848	9212
								1%	1%	1%	2%	2%	4%
							grade 6 events	17549	17790	16863	16812	20131	54891
								9%	10%	9%	9%	10%	27%
							grade 7 events	56757	54899	59665	59582	60327	45087
								31%	30%	32%	32%	31%	22%

2.2 Compared Parameters

Parameter	Planned	Actual
Instrument	ACIS	ACIS
Detector	ACIS-012367	ACIS-012367
Grating	NONE	NONE
Data mode	FAINT	FAINT
Observation mode	SECONDARY	SECONDARY
[deg] Pointing RA	0	111.0175955892984
[deg] Pointing Dec	0	-4.977176264079654
[deg] Pointing Roll	0.0	19.48884381955851
[mm] SIM focus pos	-0.782348	-0.7809083437167272
[mm] SIM defocus	0	0.7524282956875696
[mm] SIM translation stage pos	-233.592463	250.4635187648994
[mm] SIM translation stage offset	0	-0.007540371344731511
[s] Observation start time (MET)	283969778.85383	283969777.82882
Observation start date	2006-12-31T16:29:39	2006-12-31T16:29:37
[s] Observation end time (MET)	283979383.104286	283979382.07928
Observation end date	2006-12-31T19:09:43	2006-12-31T19:09:42
Read mode	TIMED	TIMED

Parameter	Planned	Actual
Obspar format version number	7	7
Obspar file type	PREDICTED	ACTUAL
Obspar update status	NONE	UPDATED
On-chip summing requested	N	N
Subarray requested	NONE	NONE
Alternating exposures requested	N	N
[s] Primary exposure time	3.2	3.2

2.3 Star Slots

2.4 FID Slots

A Summary

A.1 Status

V&V Scientist	Jen Lauer
V&V Date (YYYY-MM-DD)	2012.04.18
V&V Edition	1
V&V Disposition and Status	OK
V&V Charge Time	7.3245773839355

A.2 Comments