

V&V Reference Report

L2 ASCDS Version : 7.6.7

Observation 5835 - L2 Version 002
Chandra X-Ray Center

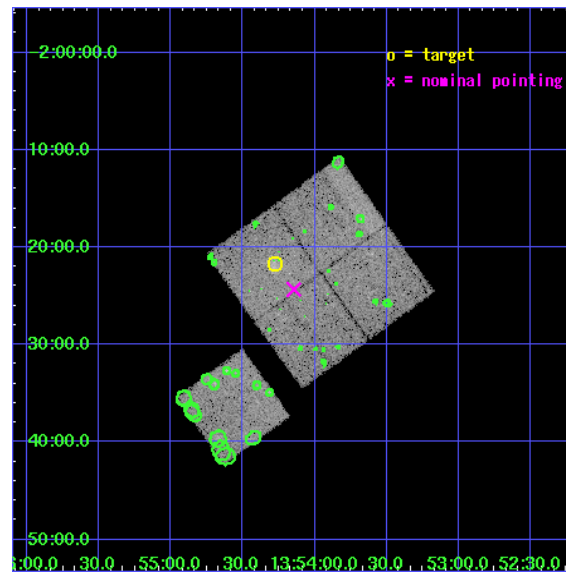
L2 Processing Date: Mar 3 2006

Contents

1	Front	2
2	OBI	3
2.1	OBI	3
2.1.1	Images	3
2.1.2	Bias	3
2.1.3	Parameters	4
2.1.4	Events	4
2.2	Compared Parameters	5
2.3	Aspect	6
2.4	Star Slots	9
2.4.1	Slot 3	9
2.4.2	Slot 4	10
2.4.3	Slot 5	11
2.4.4	Slot 6	12
2.4.5	Slot 7	13
2.5	FID Slots	14
2.5.1	Slot 0	14
2.5.2	Slot 1	15
2.5.3	Slot 2	16
3	Point Sources	17
A	Summary	18
A.1	Status	18
A.2	Comments	18

1 Front

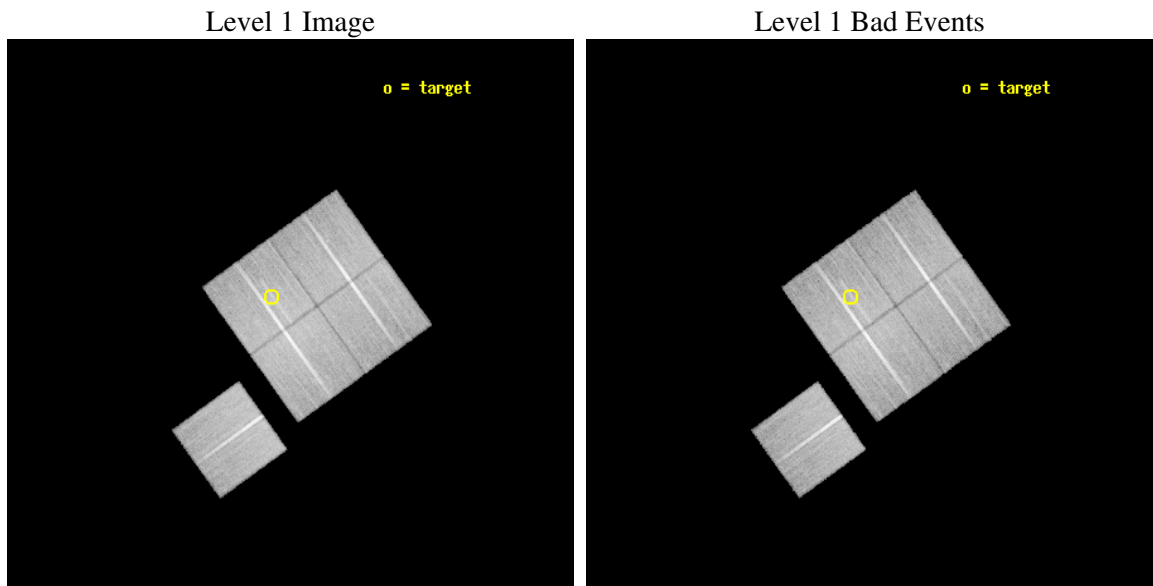
seq_num	800544
obs_id	5835
title	Supplement to Chandra observations of high-redshift clusters of galaxies from the 400 Square Degree ROSAT PSPC survey
observer	Dr. Steven Murray
object	cl1354-0221
dtcycle	0
cycle	P
ra_targ	208.569583
dec_targ	-2.362778
ra_nom	208.53624418579
dec_nom	-2.4056583224459
roll_nom	234.26101404818
revision	2
ontime	38173.359005958
livetime	37674.595967727
ontime0	38170.217926204
ontime1	38170.217946202
ontime2	38176.499926597
ontime3	38173.359005958
ontime6	38173.358936459
l2events	95033



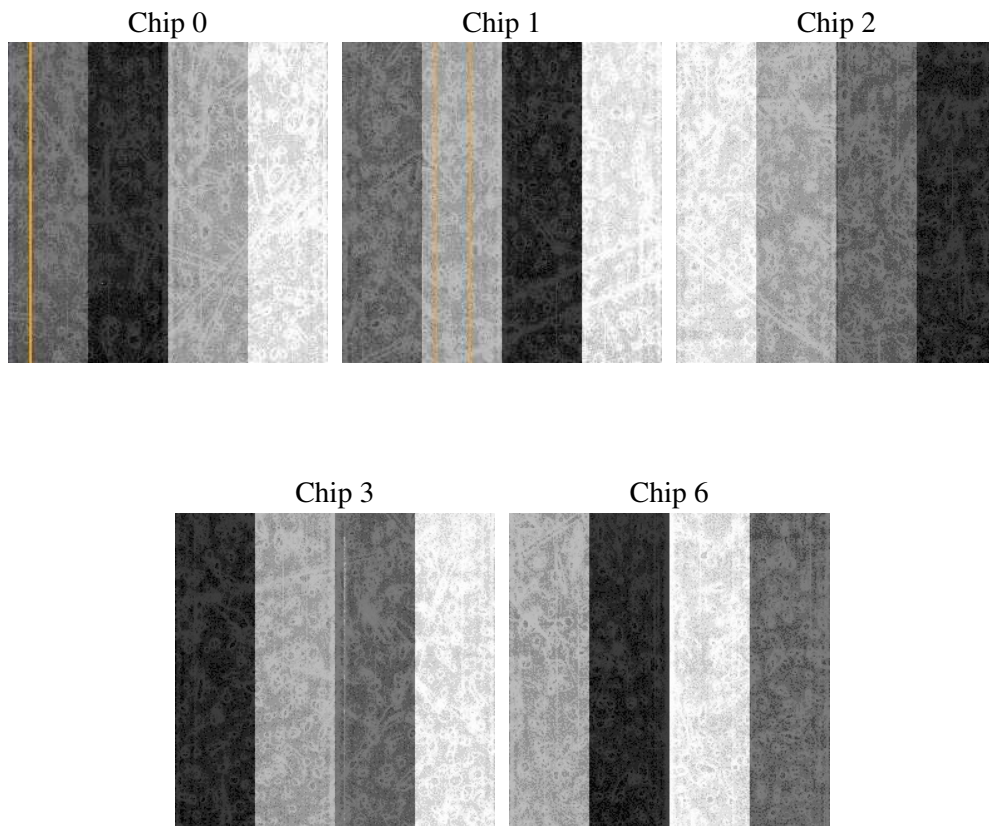
2 OBI

2.1 OBI

2.1.1 Images



2.1.2 Bias



2.1.3 Parameters

obi_num	1
ascdsver	7.6.7
caldbver	3.2.1
date	2006-03-03T12:54:32
revision	2

sched_exp_time	38000.000000
ontime	38326.627166092
ontime0	38323.486086339
ontime1	38323.486096442
ontime2	38329.768076837
ontime3	38326.627166092
ontime6	38326.627086699
l1events	1063271

2.1.4 Events

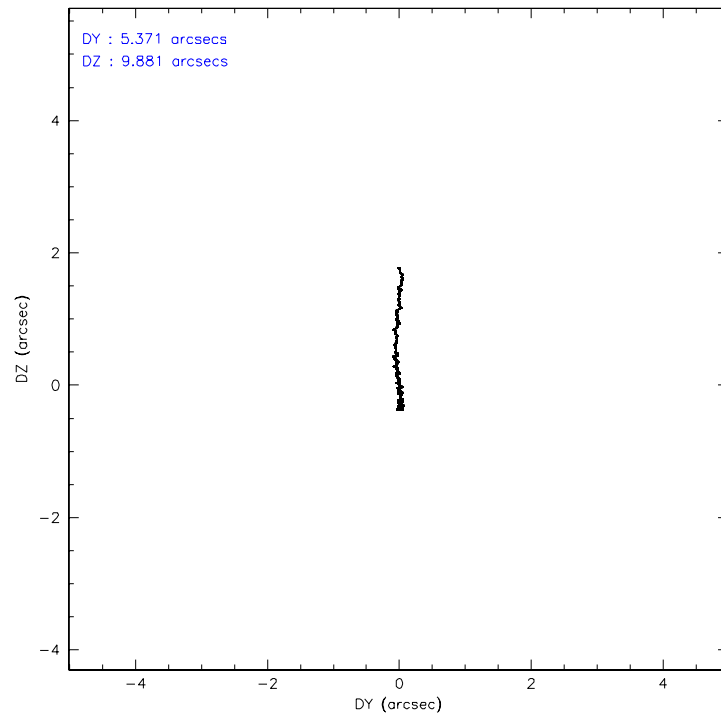
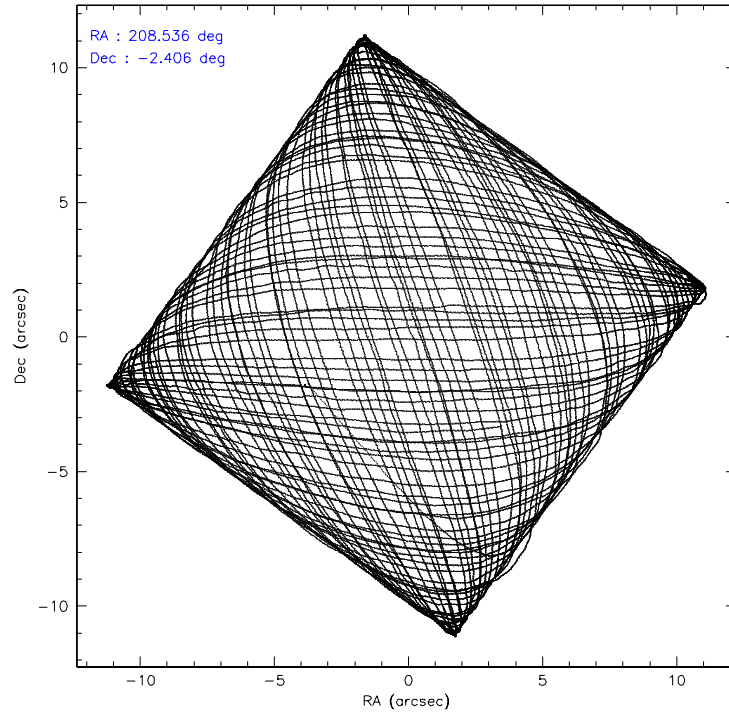
	ccd 0	ccd 1	ccd 2	ccd 3	ccd 6
level 1 events	200748	203120	223571	216595	219237
rejected events	178015	178109	200175	194916	195672
rejected %	88%	87%	89%	89%	89%

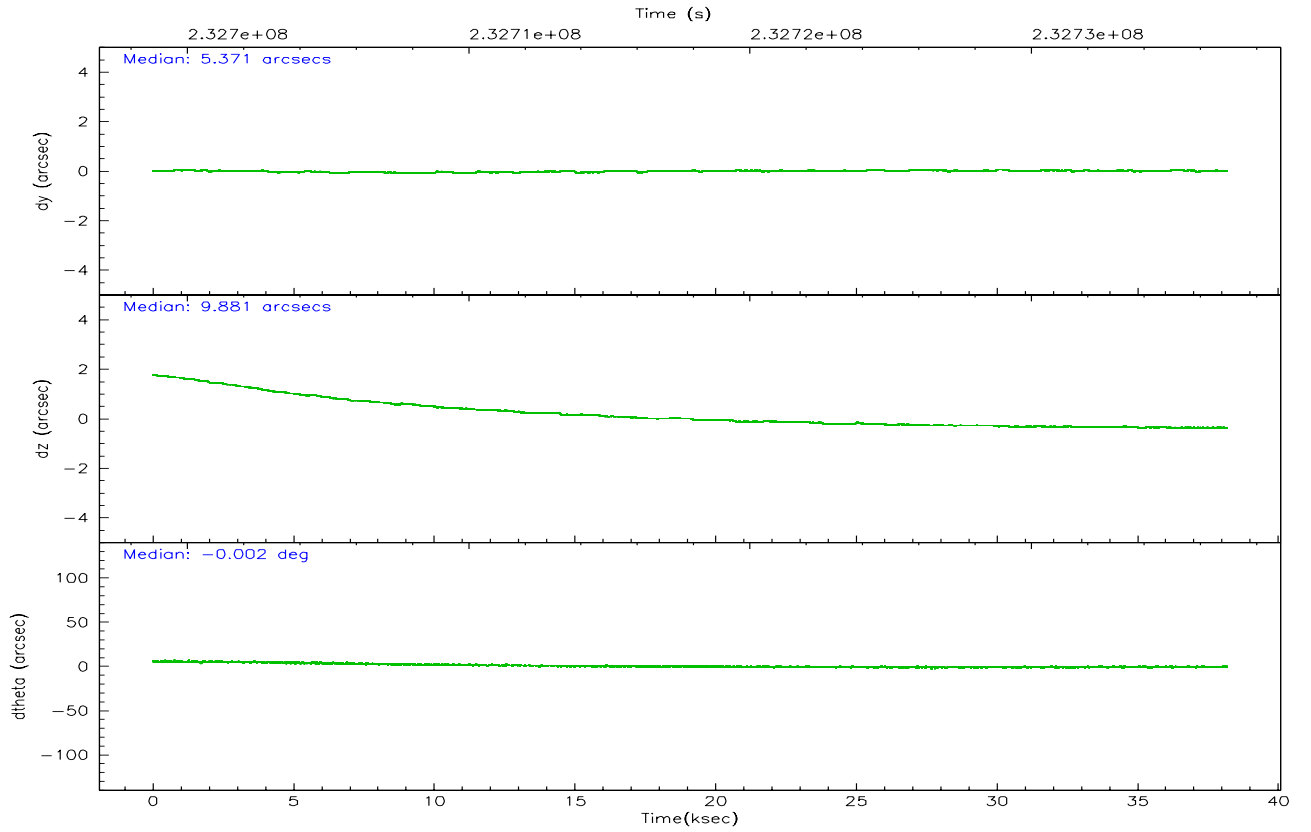
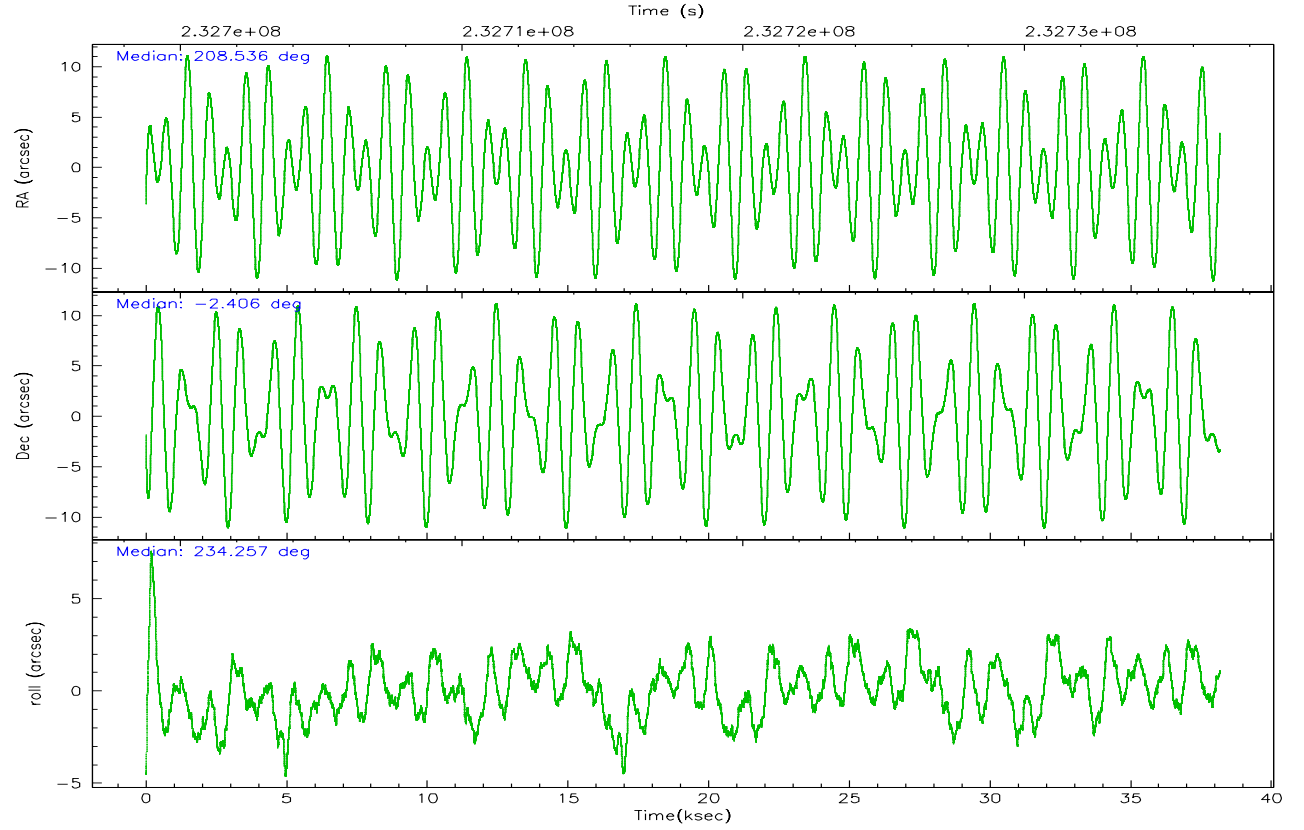
	ccd 0	ccd 1	ccd 2	ccd 3	ccd 6
grade 0 events	8237	9104	9123	8377	8901
	4%	4%	4%	3%	4%
grade 1 events	121	109	128	111	93
	0%	0%	0%	0%	0%
grade 2 events	5487	5497	5495	4528	5156
	2%	2%	2%	2%	2%
grade 3 events	2557	2807	2303	2363	2472
	1%	1%	1%	1%	1%
grade 4 events	2337	2686	2553	2384	2460
	1%	1%	1%	1%	1%
grade 5 events	7687	8179	7346	8663	8550
	3%	4%	3%	3%	3%
grade 6 events	4220	5011	4012	4111	4692
	2%	2%	1%	1%	2%
grade 7 events	170102	169727	192611	186058	186913
	84%	83%	86%	85%	85%

2.2 Compared Parameters

Parameter	Planned	Actual	Parameter	Planned	Actual
Instrument	ACIS	ACIS	Obspar format version number	6	6
Detector	ACIS-01236	ACIS-01236	Obspar file type	PREDICTED	ACTUAL
Grating	NONE	NONE	Obspar update status	NONE	UPDATED
Data mode	VFAINT	VFAINT	On-chip summing requested	N	N
Observation mode	POINTING	POINTING	Subarray requested	NONE	NONE
Pointing RA	208.538872	208.5362441857894	Alternating exposures requested	N	N
Pointing Dec	-2.378400	-2.4056583224459	Primary exposure time	0.000000	3.1
Pointing Roll	234.052440	234.261014048179			
SIM focus pos (mm)	-0.782348	-0.7809083437167272			
SIM defocus (mm)	0	0.001439871863259334			
SIM translation stage pos (mm)	-225.840463	-225.8433433320239			
SIM translation stage offset (mm)	-7.752	-7.749109670905796			
Observation start time	232698967.184000	232697757.42057			
Observation start date	2005-05-17T06:35:03	2005-05-17T06:15:57			
Observation end time	232736967.184000	232737934.8599			
Observation end date	2005-05-17T17:08:23	2005-05-17T17:25:34			
Read mode	TIMED	TIMED			

2.3 Aspect



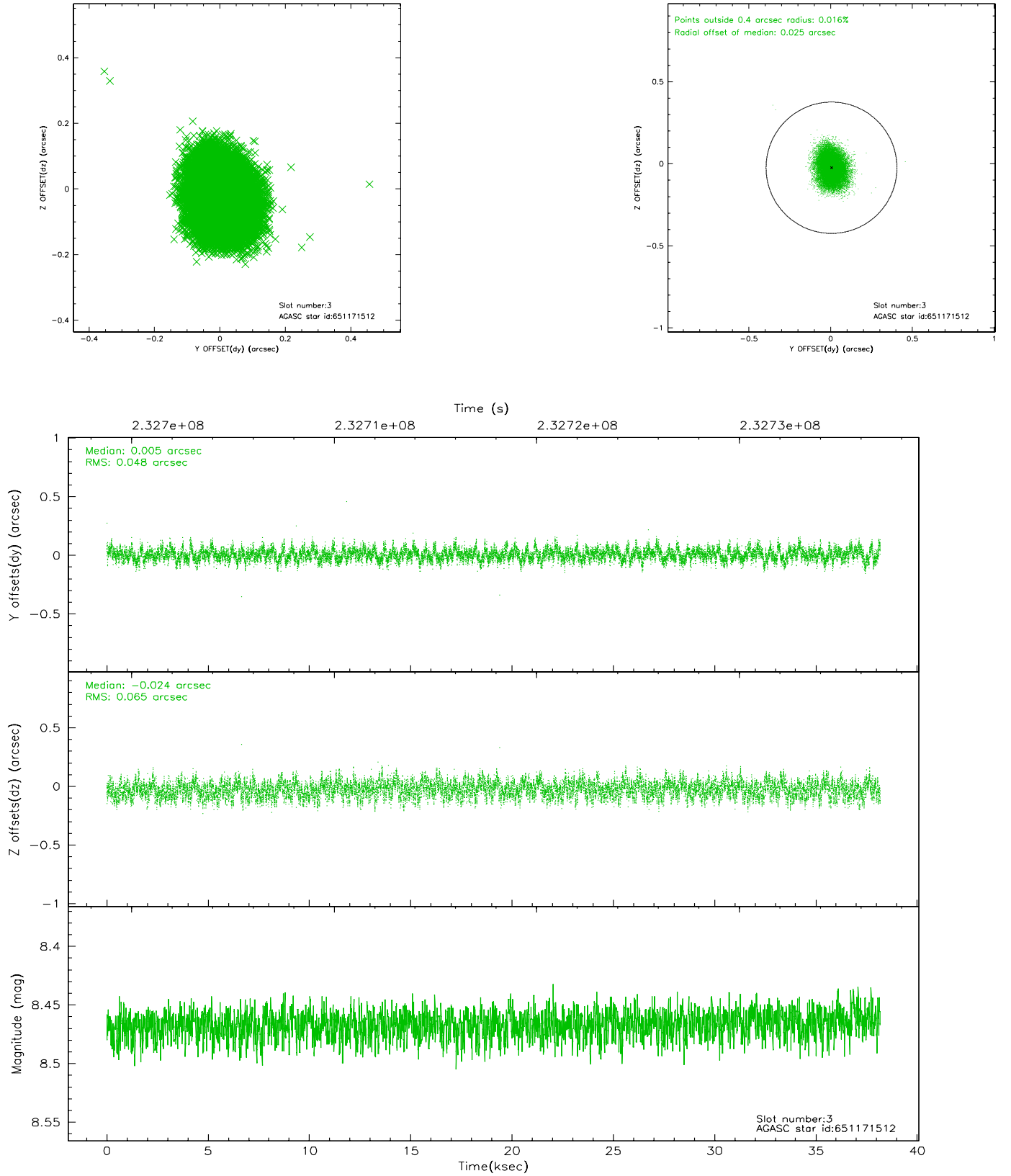


Slot Statistics

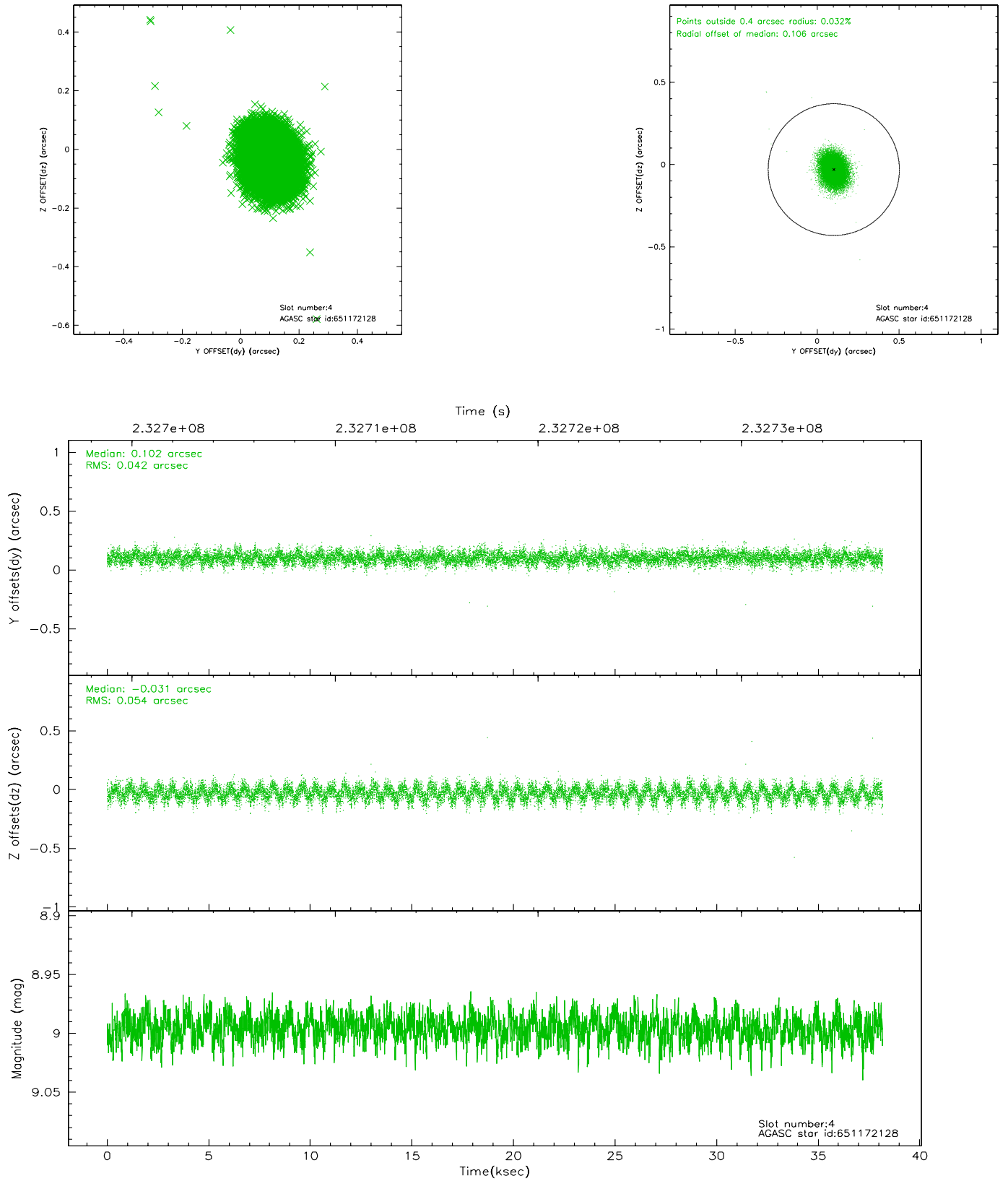
slot	status	id	mag	n_pts	med_dy	med_dz	dr1	dr2	ra	dec	mean_y	mean_z
0	FID	ACIS-I-1	7.23	9313	0.074	-0.057	0.015	0.053	0.000000	0.000000	934.29	-992.71
1	FID	ACIS-I-5	7.22	9312	-0.221	0.071	0.012	0.039	0.000000	0.000000	-1814.10	904.90
2	FID	ACIS-I-6	7.25	9313	0.052	0.057	0.012	0.028	0.000000	0.000000	399.79	1549.41
3	GUIDE	651171512	8.47	18621	0.005	-0.024	0.086	0.136	208.530490	-1.965561	-1184.90	-896.90
4	GUIDE	651172128	9.00	18615	0.102	-0.031	0.072	0.117	208.716005	-2.380357	-367.99	520.00
5	GUIDE	651559472	8.54	18599	0.079	0.129	0.059	0.094	208.584808	-3.005162	1730.36	1458.82
6	GUIDE	651172352	9.37	18617	-0.038	-0.059	0.114	0.188	209.417599	-2.298646	-2087.31	2391.12
7	GUIDE	651167608	9.50	18611	-0.149	-0.008	0.098	0.159	208.411734	-1.473172	-2369.54	-2283.36

2.4 Star Slots

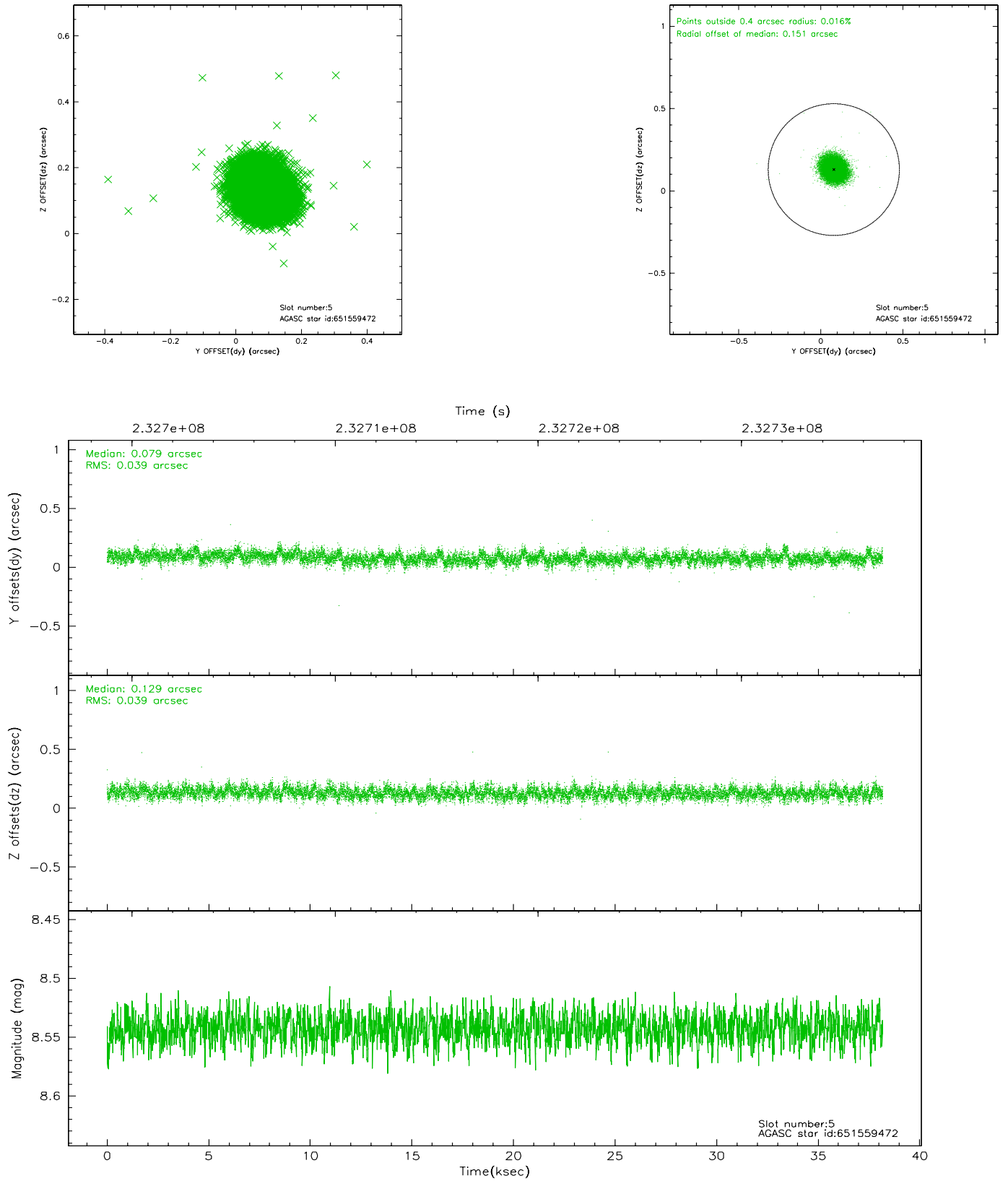
2.4.1 Slot 3



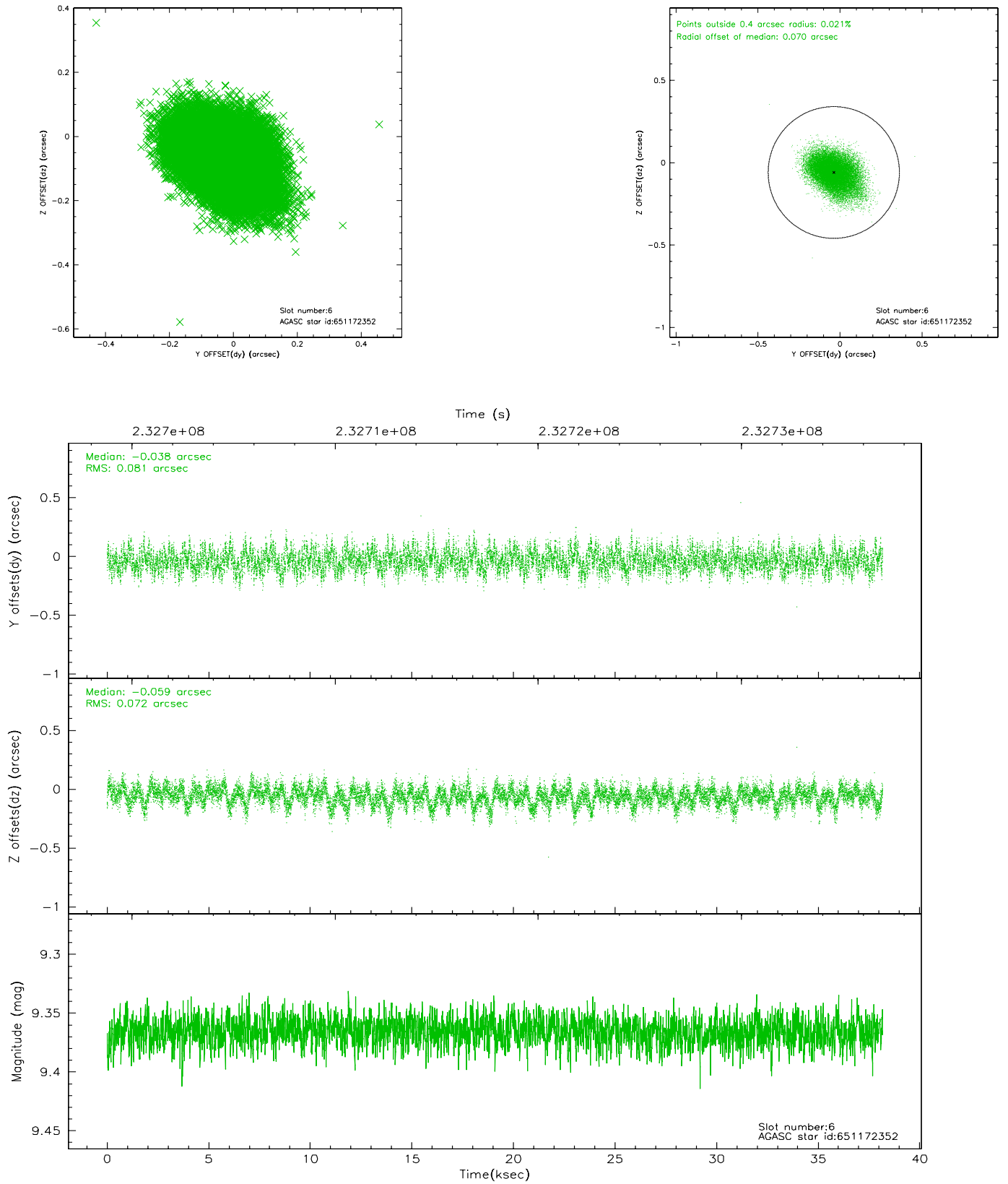
2.4.2 Slot 4



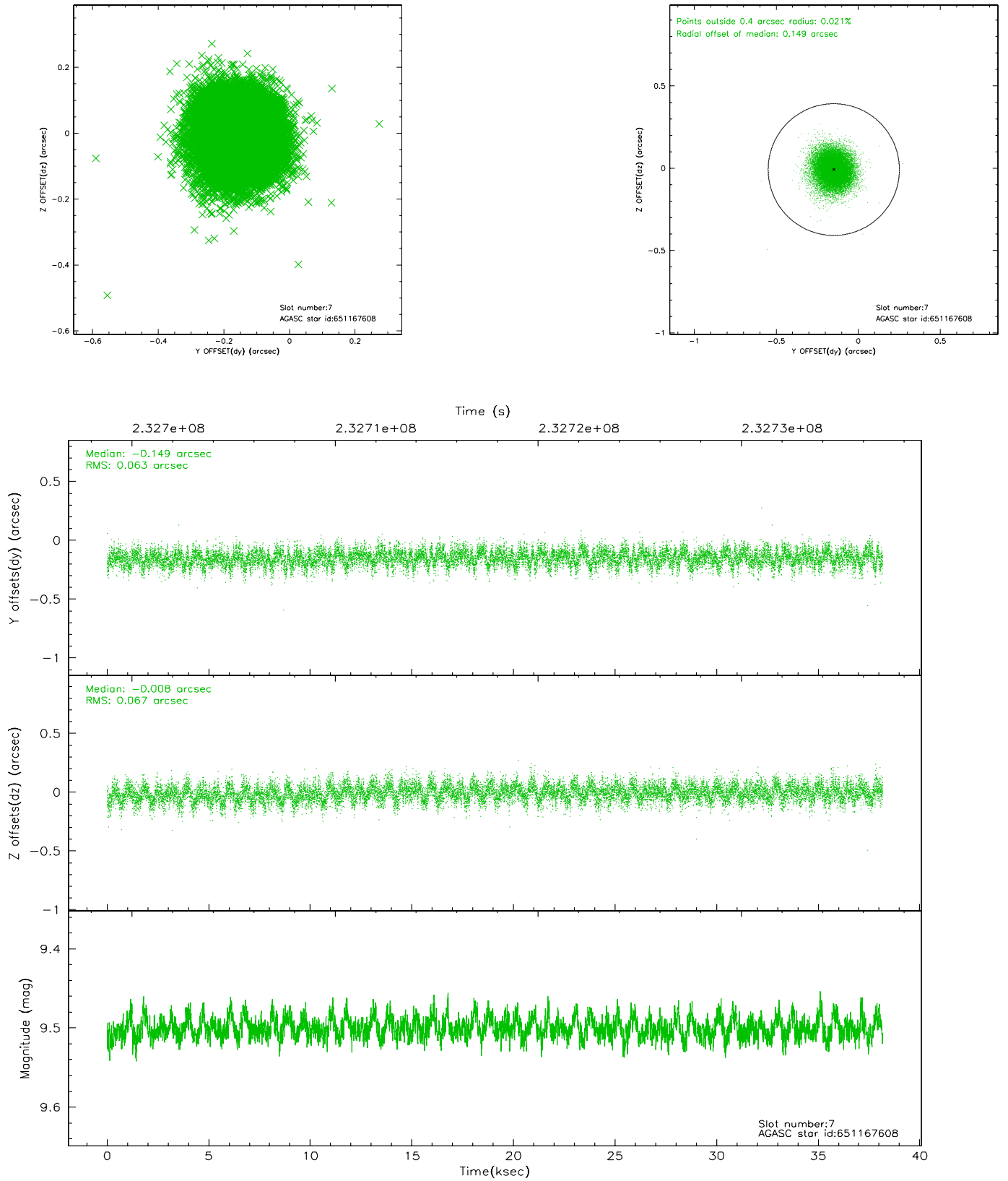
2.4.3 Slot 5



2.4.4 Slot 6

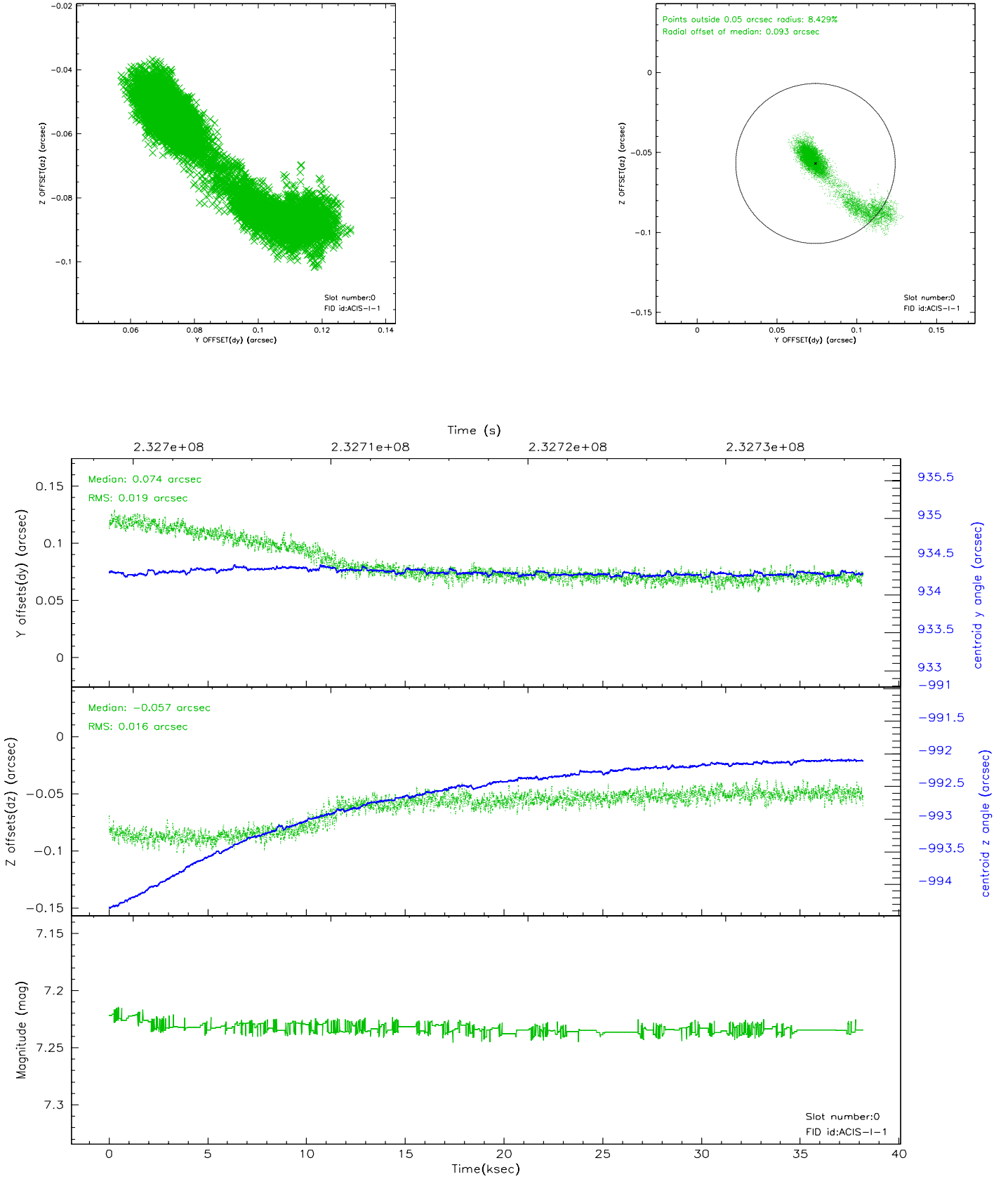


2.4.5 Slot 7

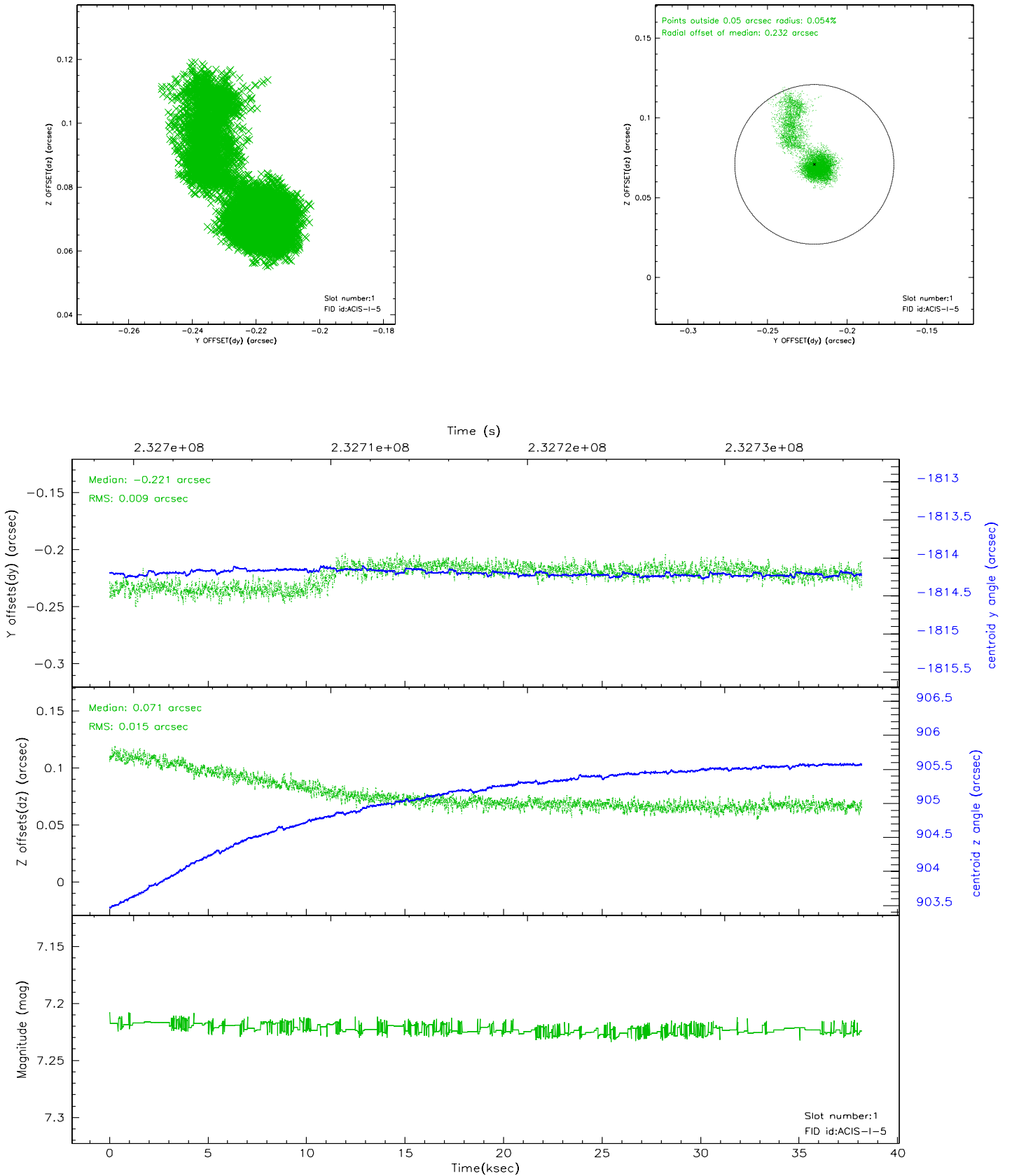


2.5 FID Slots

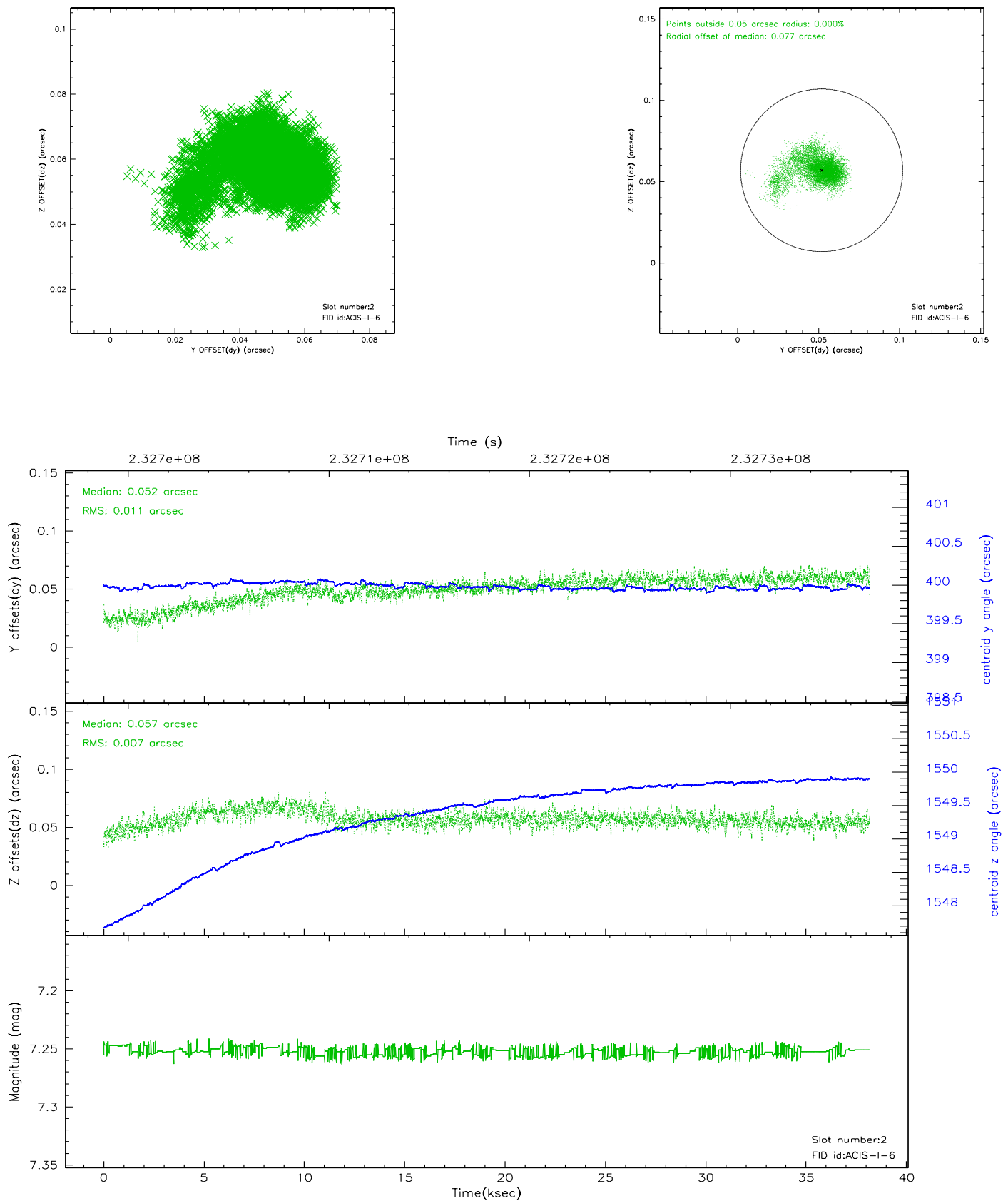
2.5.1 Slot 0



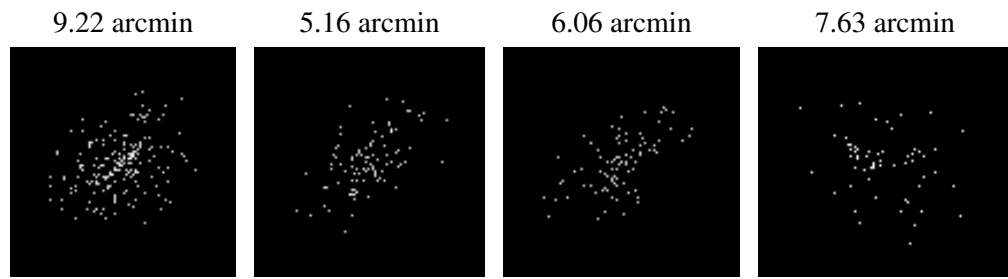
2.5.2 Slot 1



2.5.3 Slot 2



3 Point Sources



A Summary

A.1 Status

V&V Scientist	Beth Sundheim
V&V Date (YYYY-MM-DD)	2006.03.03
V&V Edition	1
V&V Disposition and Status	OK
V&V Charge Time	38.17335

A.2 Comments