

V&V Reference Report

L2 ASCDS Version : 8.4.4

Observation 58105 - L2 Version 2
Chandra X-Ray Center

L2 Processing Date : May 5 2012

Contents

1	Front	2
2	OBI	3
2.1	OBI	3
2.1.1	Images	3
2.1.2	Bias	3
2.1.3	Parameters	4
2.1.4	Events	4
2.2	Compared Parameters	5
2.3	Star Slots	6
2.4	FID Slots	6
A	Summary	7
A.1	Status	7
A.2	Comments	7

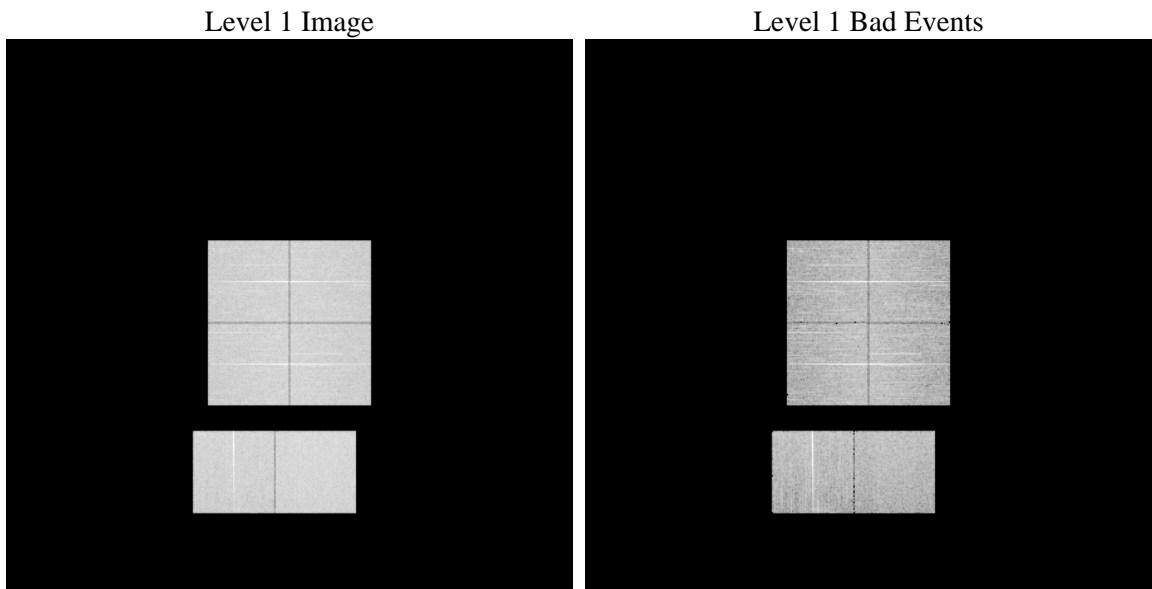
1 Front

seq_num	 	Sequence number
obs_id	58105	Observation id
title	ACIS-012367 diagnostics	Proposal title
observer	CHANDRA engineering request/realtime commanding	Principal investig
object	 	Source name
dtcycle	0	
cycle	P	events from which exps? Prim/Second/Both
ra_targ	0.0	Observer's specified target RA [deg]
dec_targ	0.0	Observer's specified target Dec [deg]
ra_nom	277.03063054435	Nominal RA [deg]
dec_nom	20.9974745953	Nominal Dec [deg]
roll_nom	322.10820122653	Nominal Roll [deg]
revision	2	Processing version of data
ontime	7795.1999710202	Sum of GTIs [s]
livetime	7696.4924552813	Livetime [s]
ontime0	7795.1999710202	Sum of GTIs [s]
ontime1	7795.1999710202	Sum of GTIs [s]
ontime2	7795.1999710202	Sum of GTIs [s]
ontime3	7791.9591302276	Sum of GTIs [s]
ontime6	7795.1999710202	Sum of GTIs [s]
ontime7	7795.1999710202	Sum of GTIs [s]
l2events	659334	Number of level 2 events

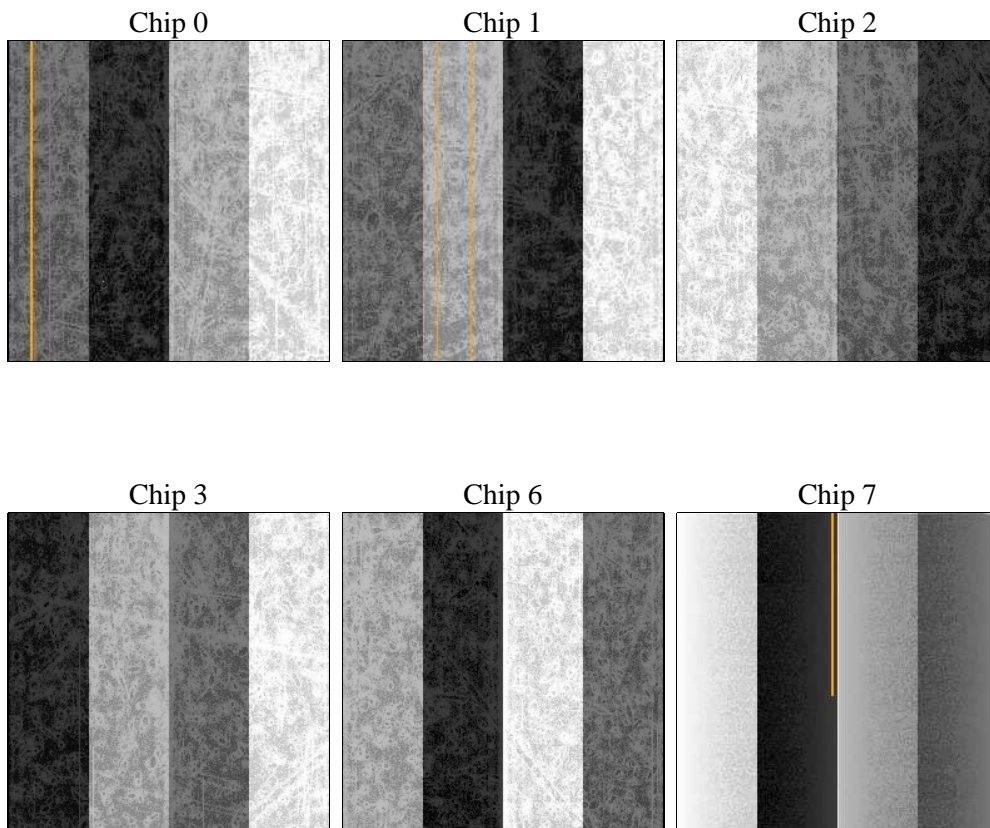
2 OBI

2.1 OBI

2.1.1 Images



2.1.2 Bias



2.1.3 Parameters

obi_num	0	Obi number	sched_exp_time	0.0	[s] Scheduled observation exposure time
ascdsver	8.4.4	Processing system revision	ontime	7795.1999710202	Sum of GTIs [s]
caldsver	4.4.9	 	ontime0	7795.1999710202	Sum of GTIs [s]
date	2012-05-05T08:58:10	Date and time of file creation	ontime1	7795.1999710202	Sum of GTIs [s]
revision	2	Processing version of data	ontime2	7795.1999710202	Sum of GTIs [s]
			ontime3	7791.9591302276	Sum of GTIs [s]
			ontime6	7795.1999710202	Sum of GTIs [s]
			ontime7	7795.1999710202	Sum of GTIs [s]
			l1events	1106692	Number of level 1 events

2.1.4 Events

	ccd 0	ccd 1	ccd 2	ccd 3	ccd 6	ccd 7		ccd 0	ccd 1	ccd 2	ccd 3	ccd 6	ccd 7
level 1 events	175962	177309	182115	180468	185548	205290	grade 0 events	58777	58154	60640	60225	60025	29679
rejected events	66728	67398	72266	70524	71292	63060		33%	32%	33%	33%	32%	14%
rejected %	37%	38%	39%	39%	38%	30%	grade 1 events	399	373	451	465	386	154
								0%	0%	0%	0%	0%	0%
							grade 2 events	19345	20233	18488	19066	20364	30748
								10%	11%	10%	10%	10%	14%
							grade 3 events	7141	7252	7342	7441	7291	13354
								4%	4%	4%	4%	3%	6%
							grade 4 events	7216	7105	7216	7328	7286	13391
								4%	4%	3%	4%	3%	6%
							grade 5 events	3725	3926	3471	4261	4169	10426
								2%	2%	1%	2%	2%	5%
							grade 6 events	16755	17167	16163	15924	19290	55058
								9%	9%	8%	8%	10%	26%
							grade 7 events	62604	63099	68344	65758	66737	52480
								35%	35%	37%	36%	35%	25%

2.2 Compared Parameters

Parameter	Planned	Actual
Instrument	ACIS	ACIS
Detector	ACIS-012367	ACIS-012367
Grating	NONE	NONE
Data mode	FAINT	FAINT
Observation mode	SECONDARY	SECONDARY
[deg] Pointing RA	0	277.030630544354
[deg] Pointing Dec	0	20.99747459529991
[deg] Pointing Roll	0.0	322.1082012265273
[mm] SIM focus pos	-0.782348	-0.7809083437167272
[mm] SIM defocus	0	0.7524282956875696
[mm] SIM translation stage pos	-233.592463	250.466033080201
[mm] SIM translation stage offset	0	-0.01005468664627074
[s] Observation start time (MET)	312757647.331174	312757646.30618
Observation start date	2007-11-29T21:07:27	2007-11-29T21:07:26
[s] Observation end time (MET)	312773905.88196	312773904.85697
Observation end date	2007-11-30T01:38:26	2007-11-30T01:38:24
Read mode	TIMED	TIMED

Parameter	Planned	Actual
Obspar format version number	7	7
Obspar file type	PREDICTED	ACTUAL
Obspar update status	NONE	UPDATED
On-chip summing requested	N	N
Subarray requested	NONE	NONE
Alternating exposures requested	N	N
[s] Primary exposure time	3.2	3.2

2.3 Star Slots

2.4 FID Slots

A Summary

A.1 Status

V&V Scientist	Beth Sundheim
V&V Date (YYYY-MM-DD)	2012.05.07
V&V Edition	1
V&V Disposition and Status	OK
V&V Charge Time	7.7951999710202

A.2 Comments