

# V&V Reference Report

## L2 ASCDS Version : 8.4.4

Observation 57615 - L2 Version 2  
Chandra X-Ray Center

L2 Processing Date : May 20 2012

## Contents

<b>1</b>	<b>Front</b>	<b>2</b>
<b>2</b>	<b>OBI</b>	<b>3</b>
2.1	OBI . . . . .	3
2.1.1	Images . . . . .	3
2.1.2	Bias . . . . .	3
2.1.3	Parameters . . . . .	4
2.1.4	Events . . . . .	4
2.2	Compared Parameters . . . . .	5
2.3	Star Slots . . . . .	6
2.4	FID Slots . . . . .	6
<b>A</b>	<b>Summary</b>	<b>7</b>
A.1	Status . . . . .	7
A.2	Comments . . . . .	7

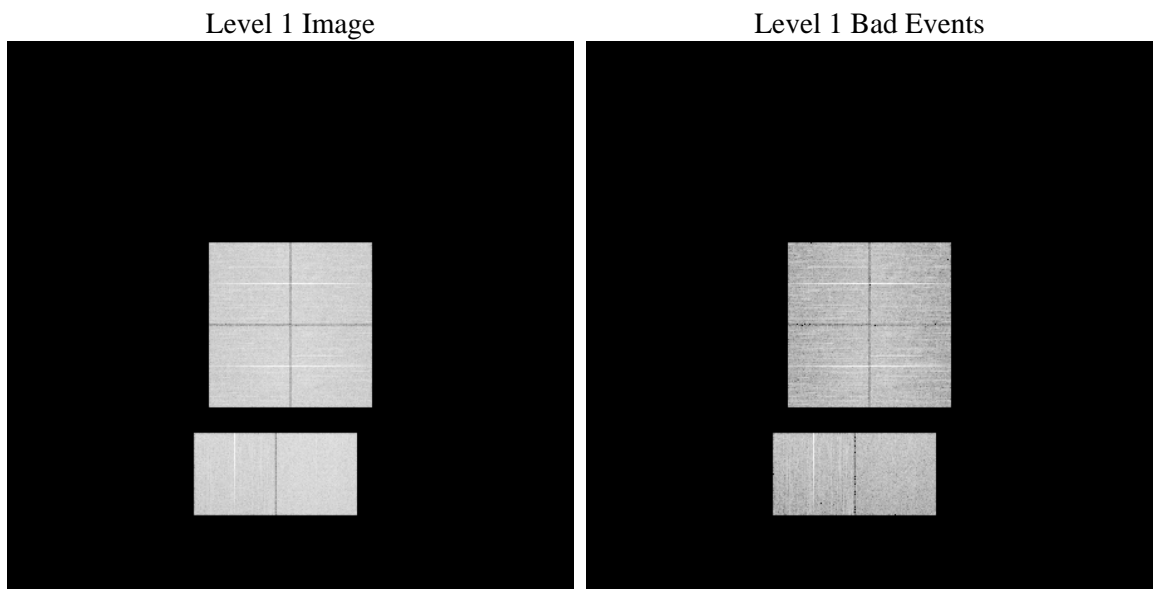
# 1 Front

seq_num	&#160	Sequence number
obs_id	57615	Observation id
title	ACIS-012367 diagnostics	Proposal title
observer	CHANDRA engineering request/realtime commanding	Principal investig
object	&#160	Source name
dtcycle	0	&#160
cycle	P	events from which exps? Prim/Second/Both
ra_targ	0.0	Observer's specified target RA [deg]
dec_targ	0.0	Observer's specified target Dec [deg]
ra_nom	351.03371594518	Nominal RA [deg]
dec_nom	-30.981625228977	Nominal Dec [deg]
roll_nom	9.3169148082495	Nominal Roll [deg]
revision	2	Processing version of data
ontime	7782.3999710679	Sum of GTIs [s]
livetime	7683.8545366356	Livetime [s]
ontime0	7782.3999710679	Sum of GTIs [s]
ontime1	7782.3999710679	Sum of GTIs [s]
ontime2	7782.3999710679	Sum of GTIs [s]
ontime3	7782.3999710679	Sum of GTIs [s]
ontime6	7779.159000814	Sum of GTIs [s]
ontime7	7782.3999710679	Sum of GTIs [s]
l2events	526743	Number of level 2 events

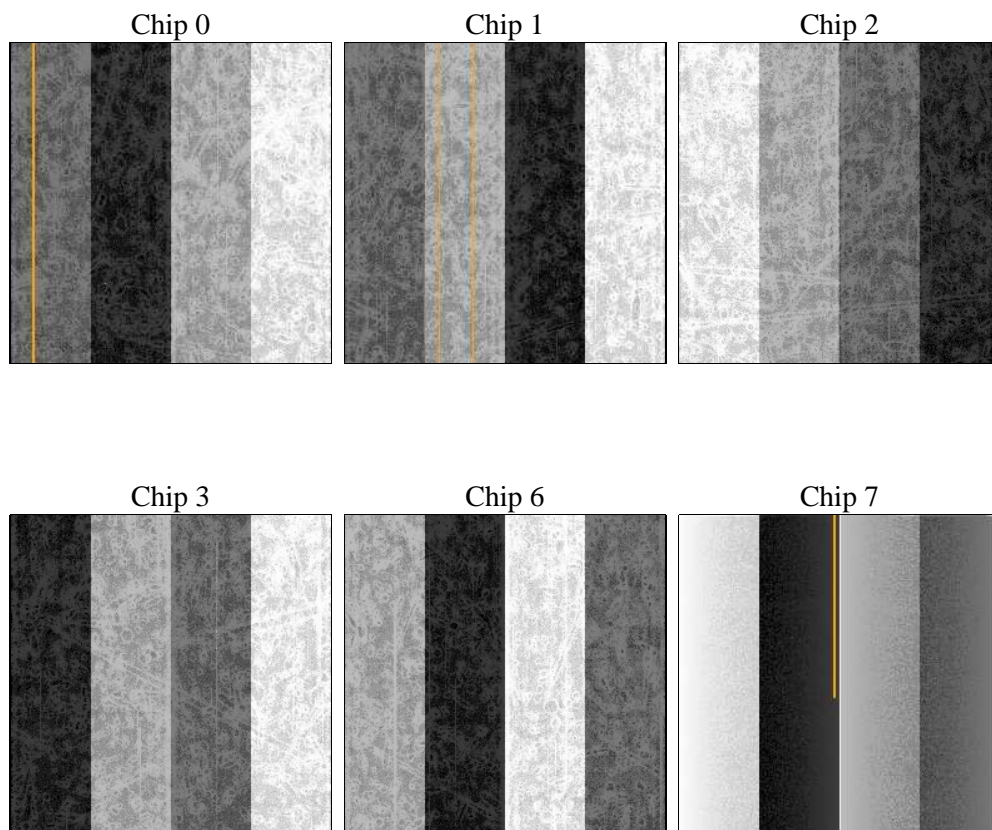
## 2 OBI

### 2.1 OBI

#### 2.1.1 Images



#### 2.1.2 Bias



### 2.1.3 Parameters

obi_num	0	Obi number	sched_exp_time	0.0	[s] Scheduled observation exposure time
ascdsver	8.4.4	Processing system revision	ontime	7782.3999710679	Sum of GTIs [s]
caldsver	4.4.9	&#160	ontime0	7782.3999710679	Sum of GTIs [s]
date	2012-05-21T00:33:59	Date and time of file creation	ontime1	7782.3999710679	Sum of GTIs [s]
revision	2	Processing version of data	ontime2	7782.3999710679	Sum of GTIs [s]
			ontime3	7782.3999710679	Sum of GTIs [s]
			ontime6	7779.159000814	Sum of GTIs [s]
			ontime7	7782.3999710679	Sum of GTIs [s]
			l1events	968855	Number of level 1 events

### 2.1.4 Events

	ccd 0	ccd 1	ccd 2	ccd 3	ccd 6	ccd 7		ccd 0	ccd 1	ccd 2	ccd 3	ccd 6	ccd 7
level 1 events	153598	153434	156711	159926	160363	184823	grade 0 events	47241	46268	48347	48202	48314	23478
rejected events	67303	66890	70266	72768	70202	65101		30%	30%	30%	30%	30%	12%
rejected %	43%	43%	44%	45%	43%	35%	grade 1 events	334	271	382	343	305	168
								0%	0%	0%	0%	0%	0%
							grade 2 events	15586	16455	15049	15403	15779	26310
								10%	10%	9%	9%	9%	14%
							grade 3 events	5813	5647	5766	5962	5963	11679
								3%	3%	3%	3%	3%	6%
							grade 4 events	5716	5703	5926	6043	5949	11245
								3%	3%	3%	3%	3%	6%
							grade 5 events	3701	3867	3490	4256	3951	10370
								2%	2%	2%	2%	2%	5%
							grade 6 events	13132	13655	12493	12716	15338	48566
								8%	8%	7%	7%	9%	26%
							grade 7 events	62075	61568	65258	67001	64764	53007
								40%	40%	41%	41%	40%	28%

## 2.2 Compared Parameters

Parameter	Planned	Actual	Parameter	Planned	Actual
Instrument	ACIS	ACIS	Obspar format version number	7	7
Detector	ACIS-012367	ACIS-012367	Obspar file type	PREDICTED	ACTUAL
Grating	NONE	NONE	Obspar update status	NONE	UPDATED
Data mode	FAINT	FAINT	Number of optional ACIS chips dropped	0	0
Observation mode	SECONDARY	SECONDARY	On-chip summing requested	N	N
[deg] Pointing RA	0	351.0337159451775	Subarray requested	NONE	NONE
[deg] Pointing Dec	0	-30.98162522897669	Alternating exposures requested	N	N
[deg] Pointing Roll	0.0	9.316914808249507	[s] Primary exposure time	3.2	3.2
[mm] SIM focus pos	-1.429586	-1.038866356238299			
[mm] SIM defocus	0.1037507710433287	0.4944702831659975			
[mm] SIM translation stage pos	250.455976	250.466033080201			
[mm] SIM translation stage offset	0	-0.01005468664627074			
[s] Observation start time (MET)	337240010.583656	337240009.55865			
Observation start date	2008-09-08T05:46:51	2008-09-08T05:46:49			
[s] Observation end time (MET)	337262685.634771	337262684.60977			
Observation end date	2008-09-08T12:04:46	2008-09-08T12:04:44			
Read mode	TIMED	TIMED			

## 2.3 Star Slots

## 2.4 FID Slots

## A Summary

### A.1 Status

V&V Scientist	Beth Sundheim
V&V Date (YYYY-MM-DD)	2012.05.29
V&V Edition	1
V&V Disposition and Status	OK
V&V Charge Time	7.7823999710679

### A.2 Comments