

V&V Reference Report

L2 ASCDS Version : 7.6.7

Observation 5755 - L2 Version 002
Chandra X-Ray Center

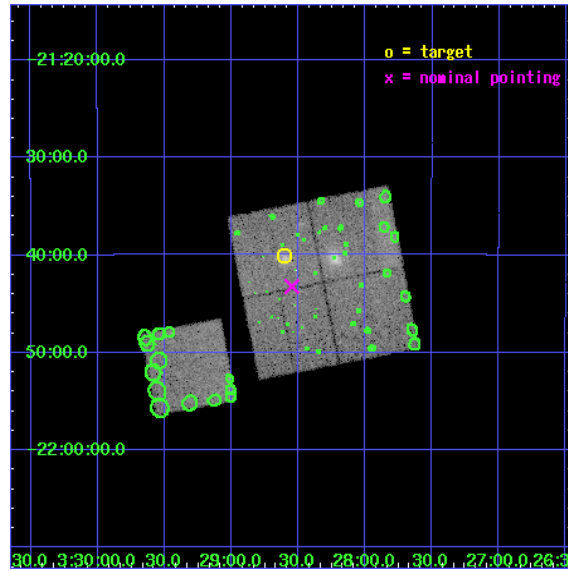
L2 Processing Date: Feb 27 2006

Contents

1	Front	2
2	OBI	3
2.1	OBI	3
2.1.1	Images	3
2.1.2	Bias	3
2.1.3	Parameters	4
2.1.4	Events	4
2.2	Compared Parameters	5
2.3	Aspect	6
2.4	Star Slots	9
2.4.1	Slot 3	9
2.4.2	Slot 4	10
2.4.3	Slot 5	11
2.4.4	Slot 6	12
2.4.5	Slot 7	13
2.5	FID Slots	14
2.5.1	Slot 0	14
2.5.2	Slot 1	15
2.5.3	Slot 2	16
3	Point Sources	17
A	Summary	18
A.1	Status	18
A.2	Comments	18

1 Front

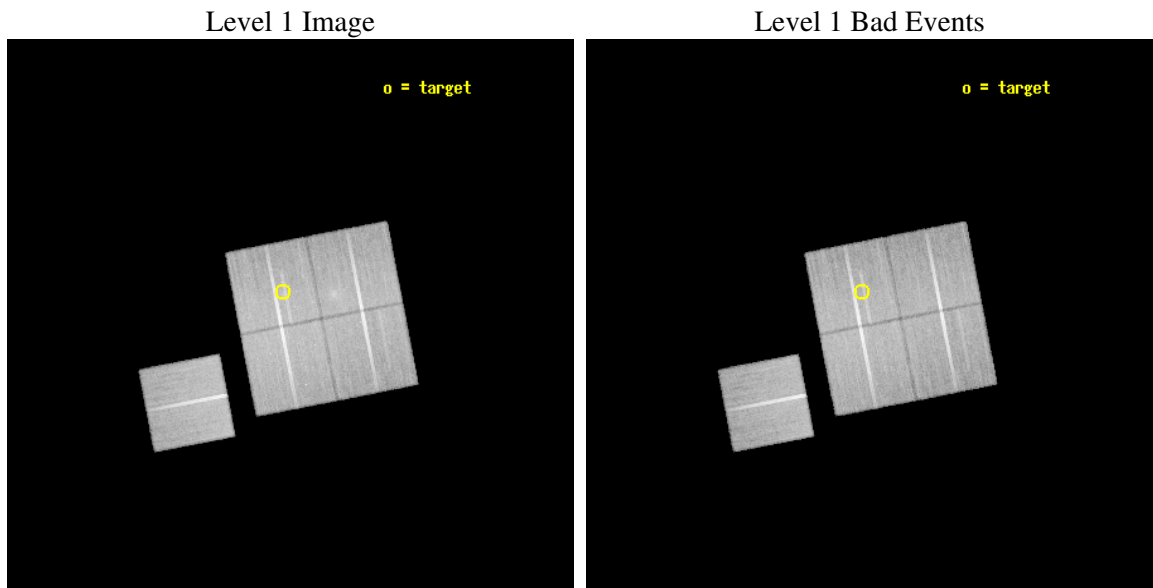
seq_num	800468
obs_id	5755
title	DARK ENERGY WITH X-RAY CLUSTERS: CHANDRA OBSERVATIONS OF 41 HIGH-REDSHIFT CLUSTERS FROM THE 400 deg^2 ROSAT PSPC SURVEY
observer	Dr Alexey Vikhlinin
object	cl0328-2140
dtcycle	0
cycle	P
ra_targ	52.150417
dec_targ	-21.667778
ra_nom	52.13719098058
dec_nom	-21.720655070871
roll_nom	259.00379872982
revision	2
ontime	43864.918015003
livetime	43291.790568254
ontime0	43864.91795522
ontime1	43864.917965233
ontime2	43864.917945236
ontime3	43864.918015003
ontime6	43868.058925509
l2events	122451



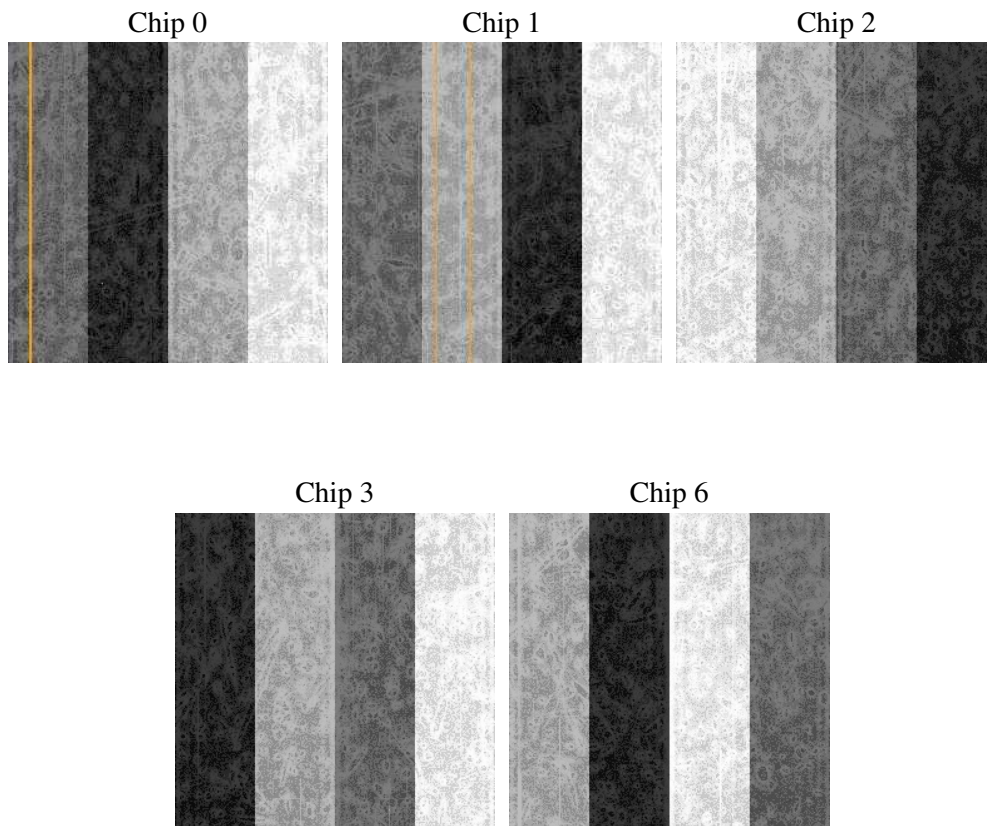
2 OBI

2.1 OBI

2.1.1 Images



2.1.2 Bias



2.1.3 Parameters

obi_num	0
ascdsver	7.6.7
caldbver	3.2.1
date	2006-02-27T11:52:18
revision	2

sched_exp_time	44100.000000
ontime	43870.387919009
ontime0	43870.387829304
ontime1	43870.387869239
ontime2	43870.387839228
ontime3	43870.387919009
ontime6	43873.528799593
l1events	1368902

2.1.4 Events

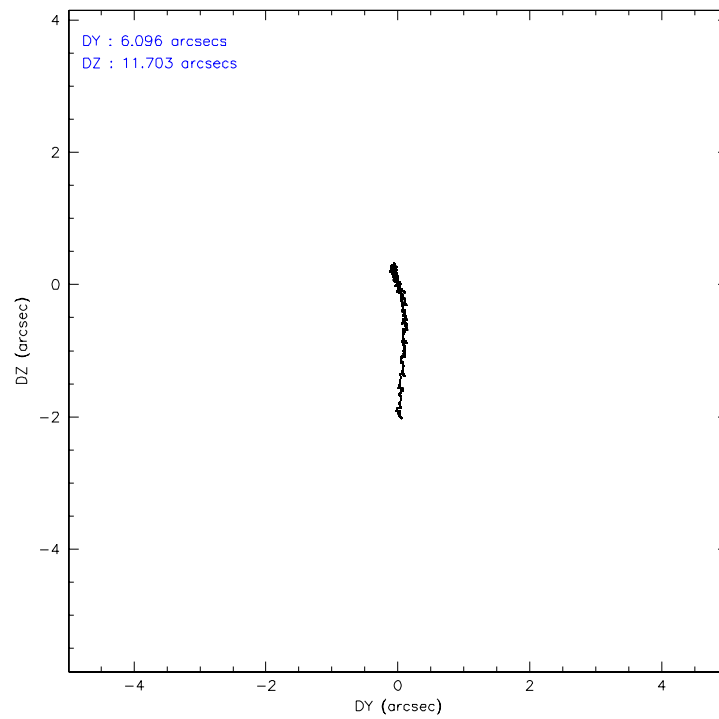
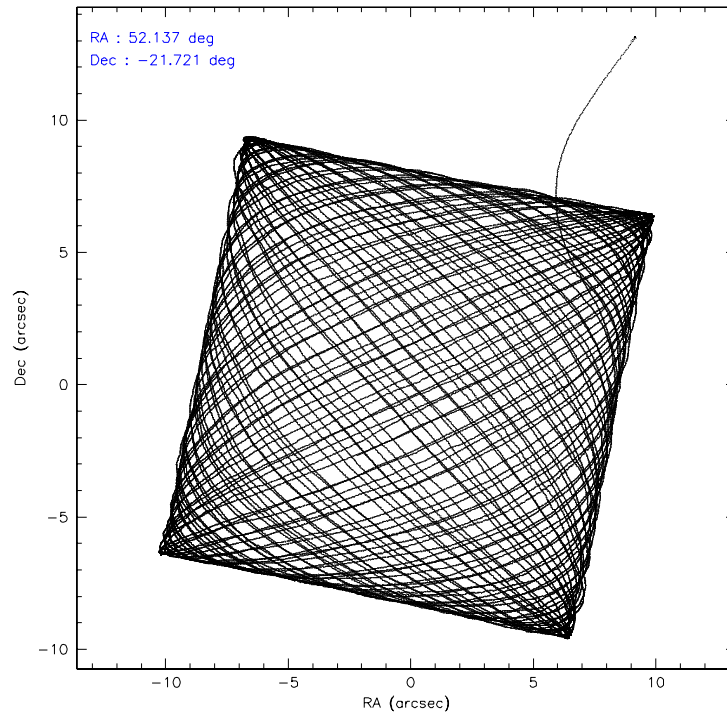
	ccd 0	ccd 1	ccd 2	ccd 3	ccd 6
level 1 events	254102	258646	294066	282979	279109
rejected events	226698	223765	266499	254735	251053
rejected %	89%	86%	90%	90%	89%

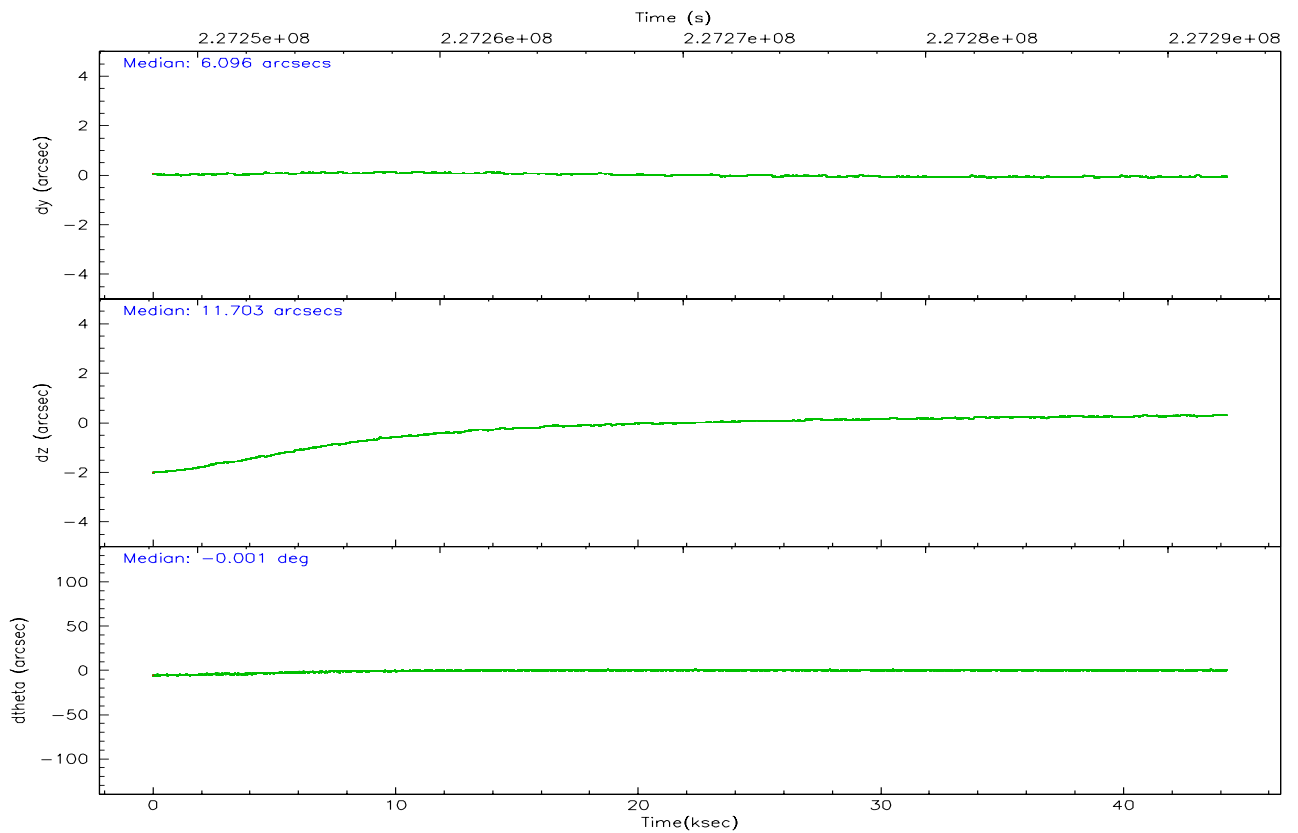
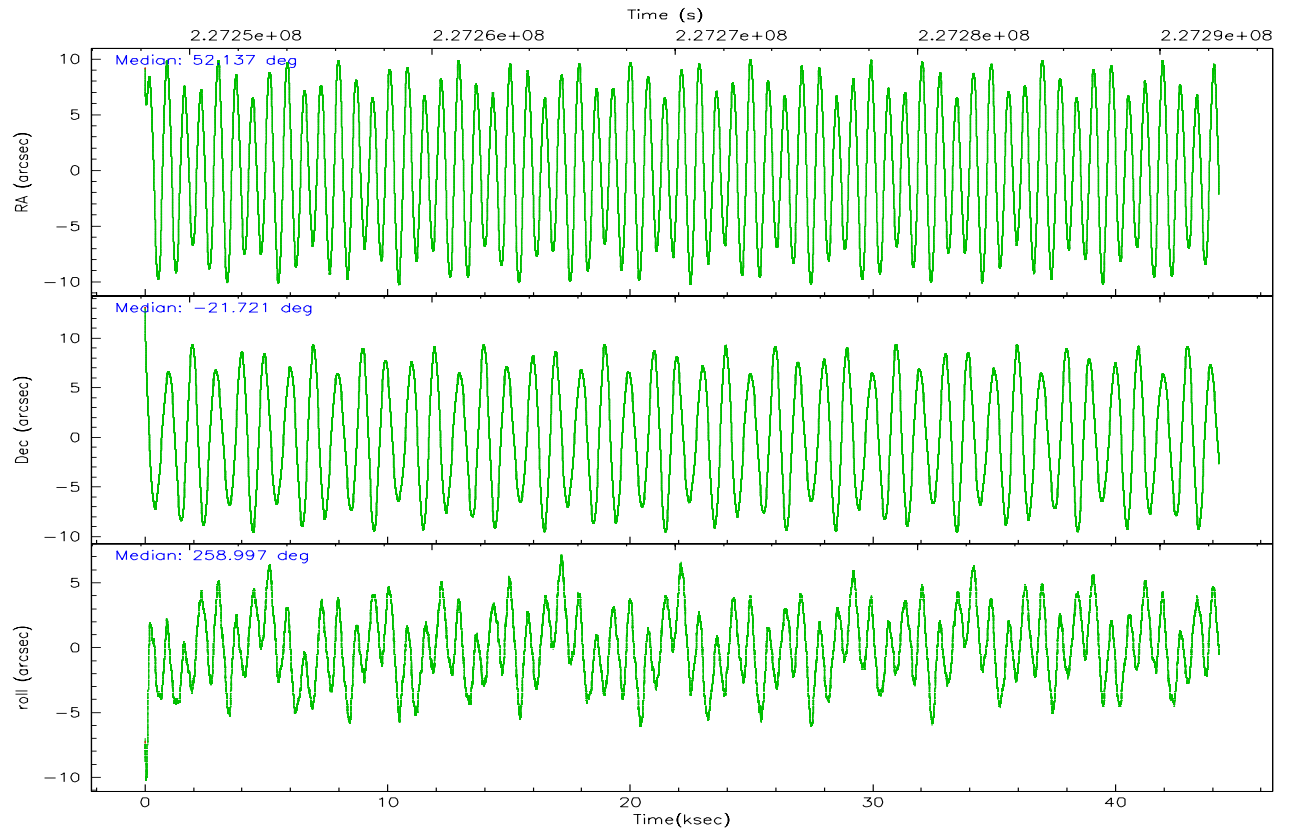
	ccd 0	ccd 1	ccd 2	ccd 3	ccd 6
grade 0 events	9376	14516	10277	11045	9670
	3%	5%	3%	3%	3%
grade 1 events	139	131	140	180	122
	0%	0%	0%	0%	0%
grade 2 events	6560	7095	6348	5814	6070
	2%	2%	2%	2%	2%
grade 3 events	3178	3535	2956	3028	3200
	1%	1%	1%	1%	1%
grade 4 events	3058	3465	2967	3106	3083
	1%	1%	1%	1%	1%
grade 5 events	9609	10540	9152	11059	10983
	3%	4%	3%	3%	3%
grade 6 events	5236	6276	5024	5255	6037
	2%	2%	1%	1%	2%
grade 7 events	216946	213088	257202	243492	239944
	85%	82%	87%	86%	85%

2.2 Compared Parameters

Parameter	Planned	Actual	Parameter	Planned	Actual
Instrument	ACIS	ACIS	Obspar format version number	6	6
Detector	ACIS-01236	ACIS-01236	Obspar file type	PREDICTED	ACTUAL
Grating	NONE	NONE	Obspar update status	NONE	UPDATED
Data mode	VFAINT	VFAINT	On-chip summing requested	N	N
Observation mode	POINTING	POINTING	Subarray requested	NONE	NONE
Pointing RA	52.127464	52.13719098057975	Alternating exposures requested	N	N
Pointing Dec	-21.694819	-21.72065507087126	Primary exposure time	0.000000	3.1
Pointing Roll	258.791511	259.0037987298209			
SIM focus pos (mm)	-0.782348	-0.7809083437167272			
SIM defocus (mm)	0	0.001439871863259334			
SIM translation stage pos (mm)	-225.840463	-225.8458576473255			
SIM translation stage offset (mm)	-7.752	-7.746595355604228			
Observation start time	227248333.184000	227247122.87281			
Observation start date	2005-03-15T04:31:09	2005-03-15T04:12:02			
Observation end time	227292433.184000	227292900.39989			
Observation end date	2005-03-15T16:46:09	2005-03-15T16:55:00			
Read mode	TIMED	TIMED			

2.3 Aspect



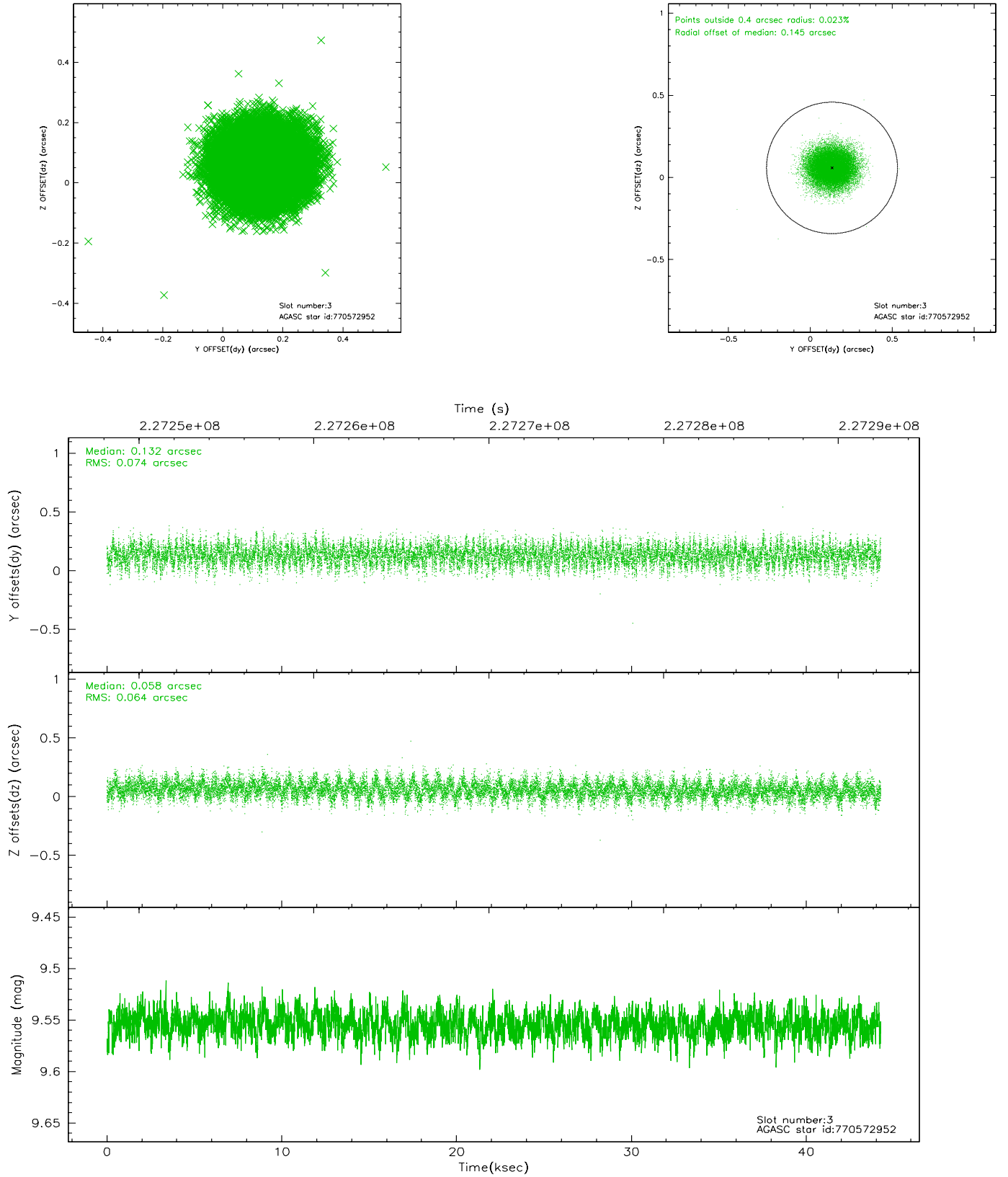


Slot Statistics

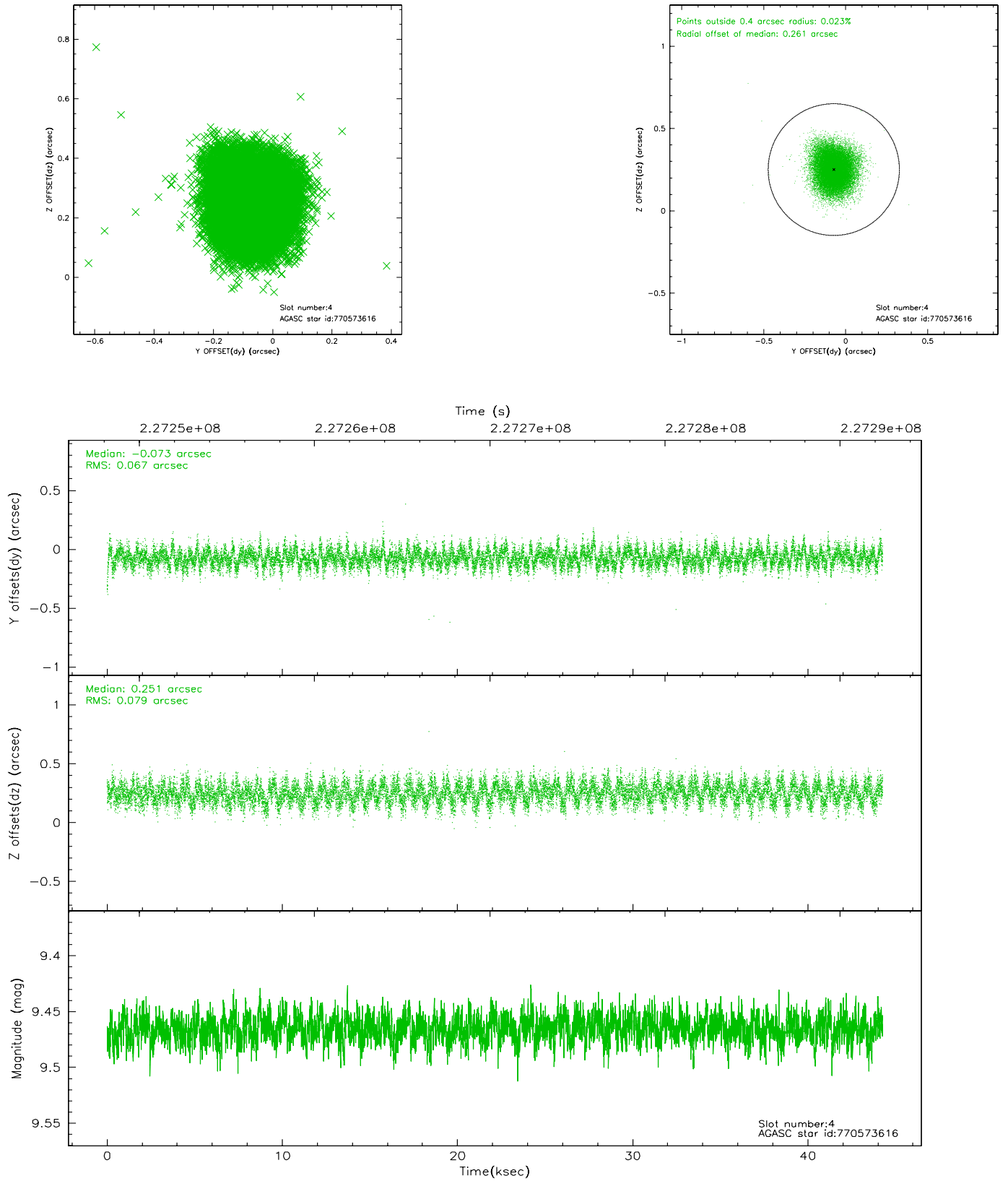
slot	status	id	mag	n_pts	med_dy	med_dz	dr1	dr2	ra	dec	mean_y	mean_z
0	FID	ACIS-I-1	7.23	10797	0.110	-0.077	0.012	0.029	0.000000	0.000000	933.55	-994.08
1	FID	ACIS-I-5	7.22	10797	-0.208	0.110	0.009	0.035	0.000000	0.000000	-1814.84	903.63
2	FID	ACIS-I-6	7.25	10798	0.006	0.038	0.014	0.047	0.000000	0.000000	399.04	1548.03
3	GUIDE	770572952	9.55	21578	0.132	0.058	0.105	0.168	52.678188	-22.321624	1860.50	2238.89
4	GUIDE	770573616	9.47	21570	-0.073	0.251	0.111	0.177	51.694921	-21.667566	187.59	-1437.61
5	GUIDE	770575272	8.84	21581	0.097	-0.056	0.087	0.144	51.531858	-22.160854	2036.03	-1620.79
6	GUIDE	770575376	8.46	21591	0.033	-0.087	0.067	0.109	51.490218	-22.063612	1719.91	-1825.82
7	GUIDE	770581640	7.84	21591	-0.189	-0.162	0.062	0.099	52.322400	-21.371182	-1269.25	414.59

2.4 Star Slots

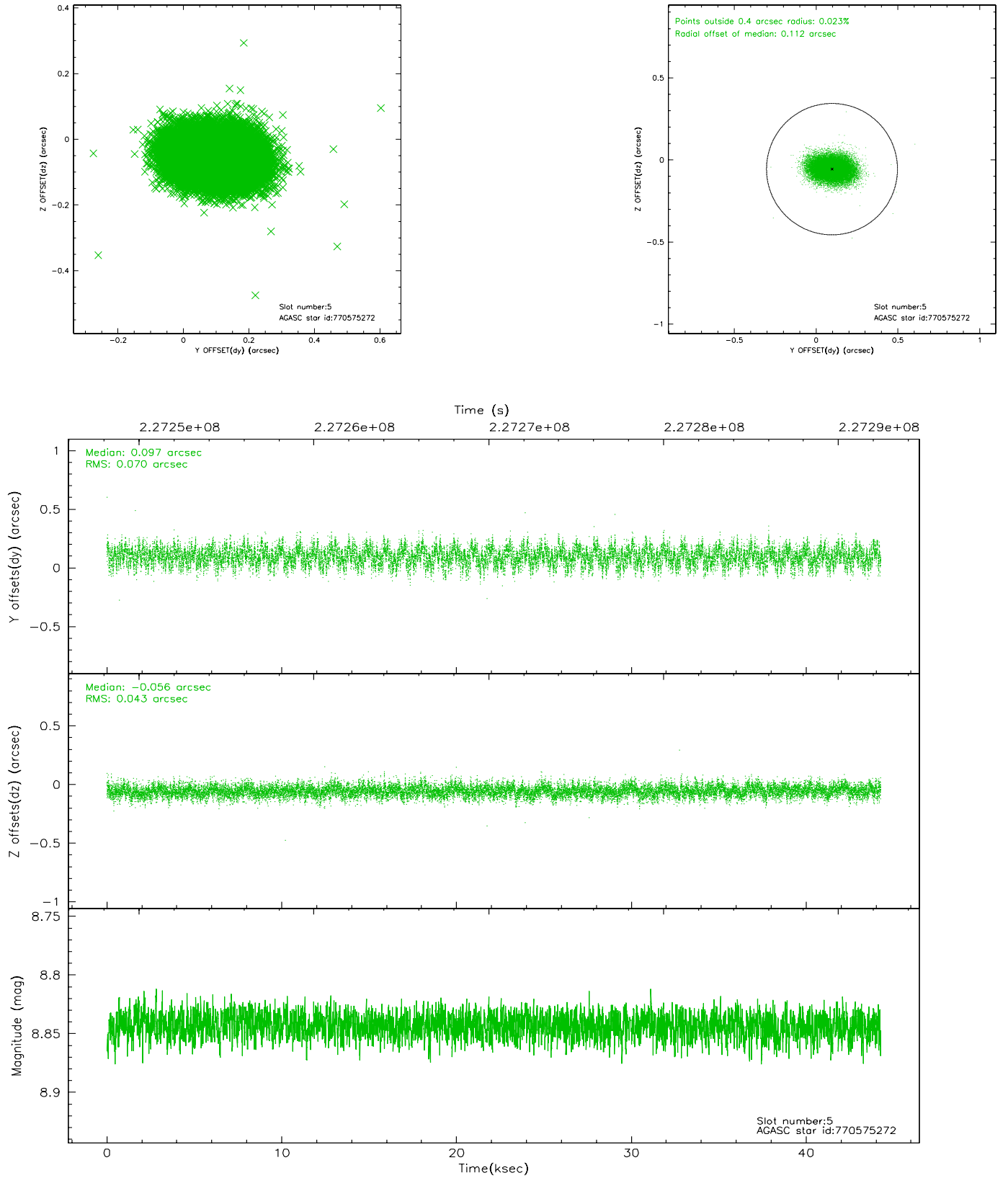
2.4.1 Slot 3



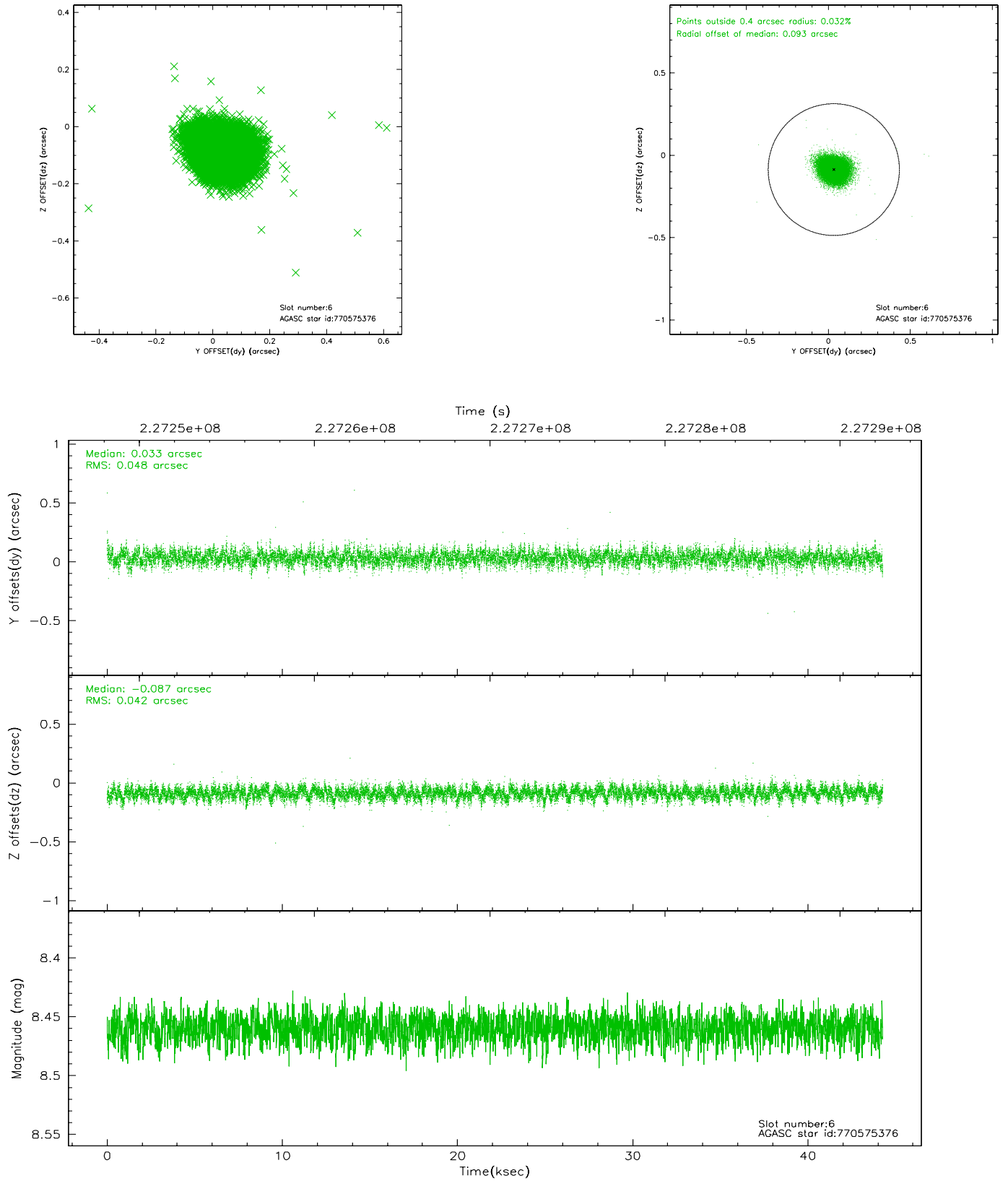
2.4.2 Slot 4



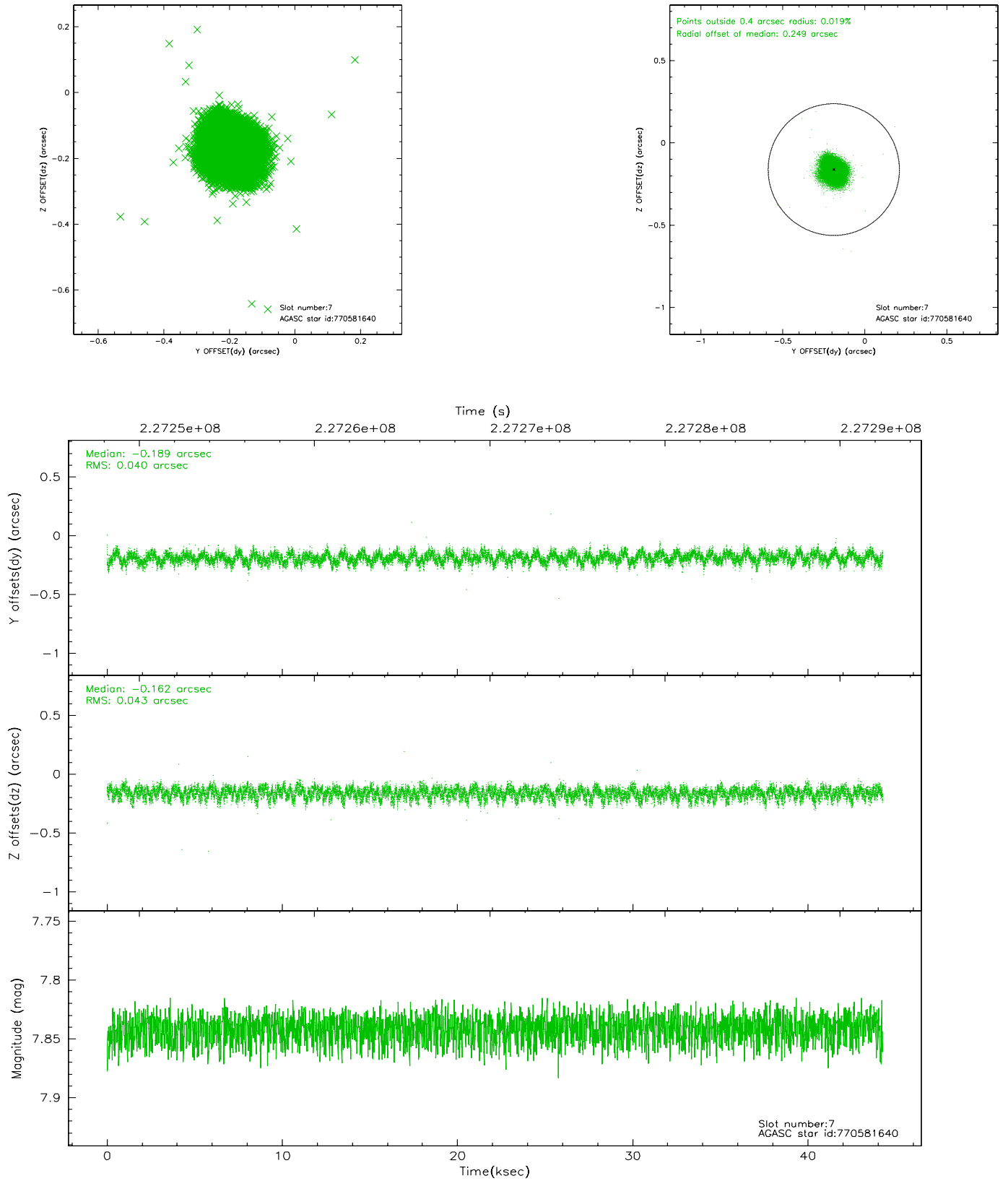
2.4.3 Slot 5



2.4.4 Slot 6

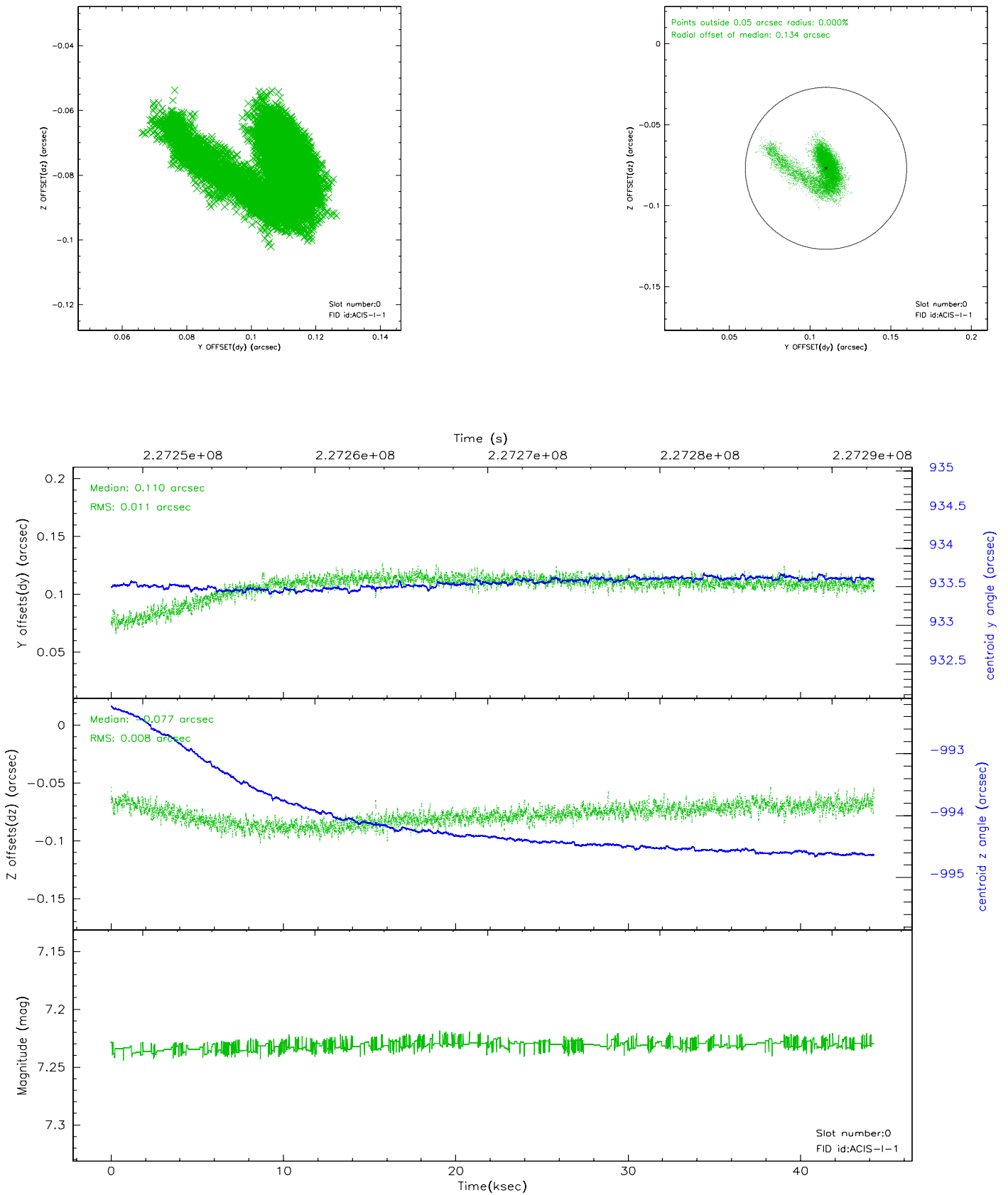


2.4.5 Slot 7

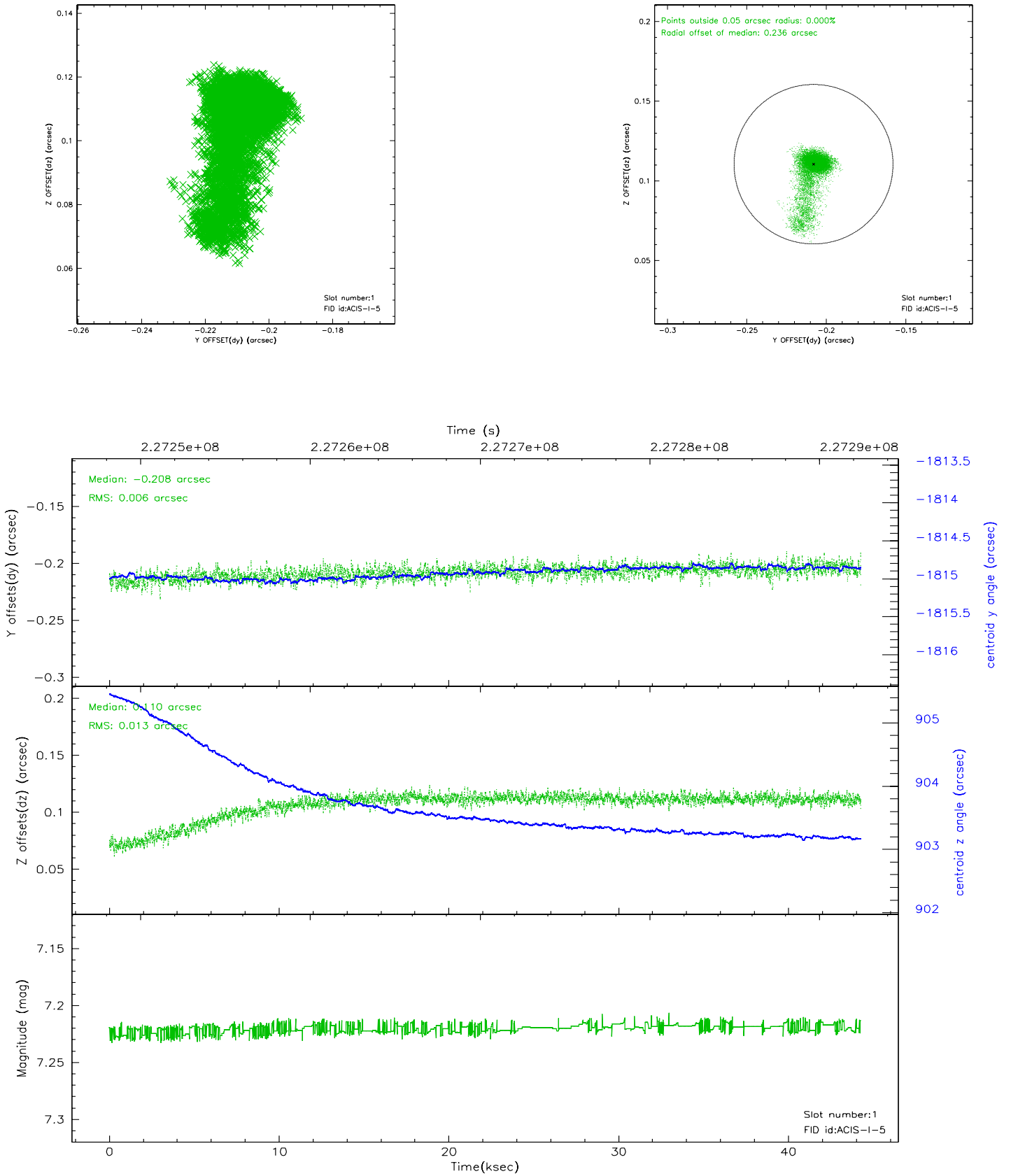


2.5 FID Slots

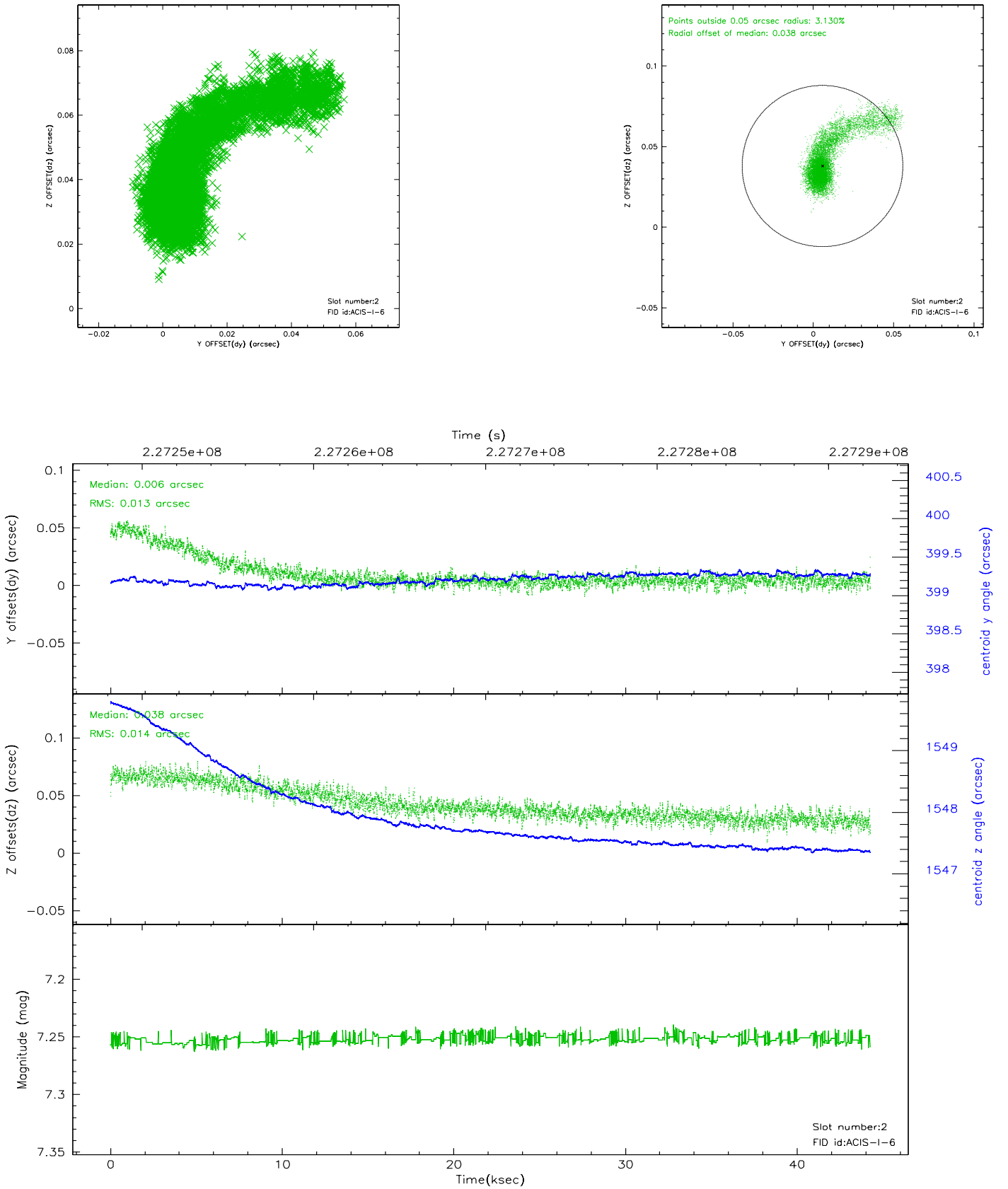
2.5.1 Slot 0



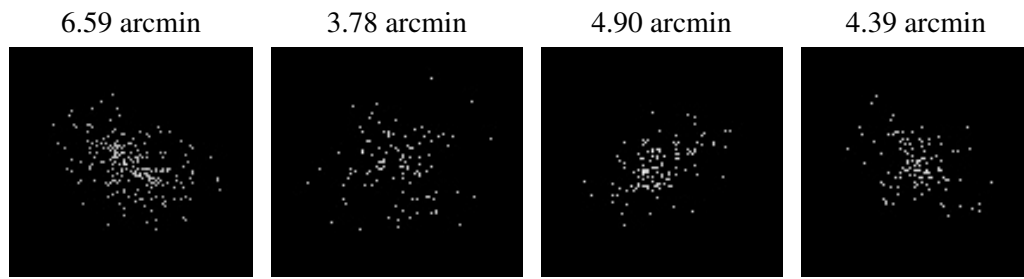
2.5.2 Slot 1



2.5.3 Slot 2



3 Point Sources



A Summary

A.1 Status

V&V Scientist	Beth Sundheim
V&V Date (YYYY-MM-DD)	2006.02.27
V&V Edition	1
V&V Disposition and Status	OK
V&V Charge Time	43.86491

A.2 Comments