

V&V Reference Report

L2 ASCDS Version : 8.4.5

Observation 57055 - L2 Version 2
Chandra X-Ray Center

L2 Processing Date : Jun 8 2012

Contents

1	Front	2
2	OBI	3
2.1	OBI	3
2.1.1	Images	3
2.1.2	Bias	3
2.1.3	Parameters	4
2.1.4	Events	4
2.2	Compared Parameters	5
2.3	Star Slots	6
2.4	FID Slots	6
A	Summary	7
A.1	Status	7
A.2	Comments	7

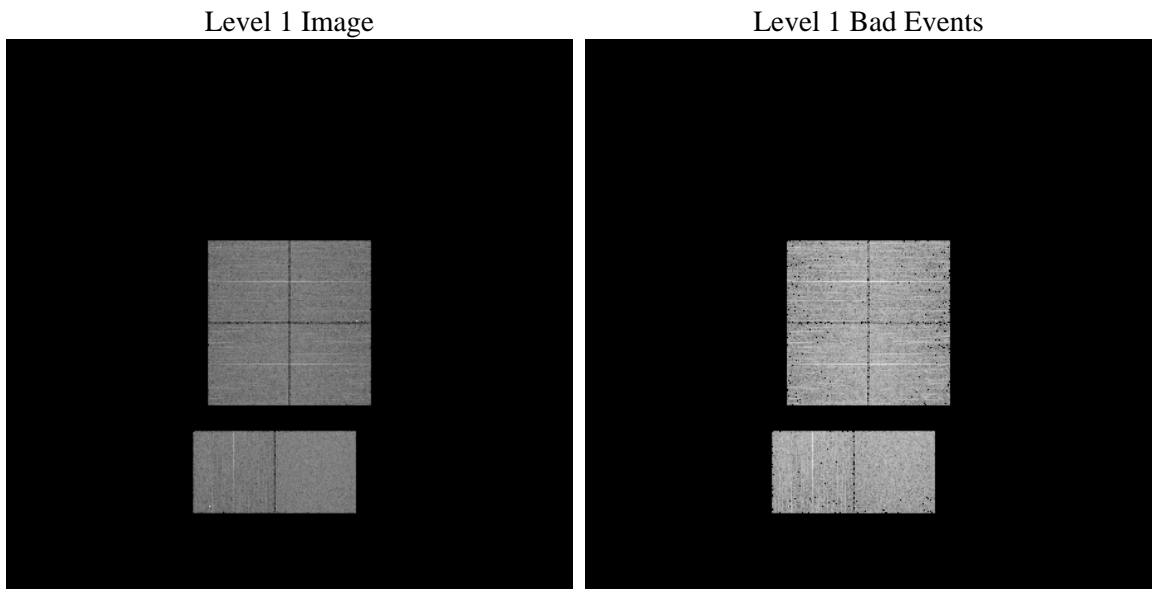
1 Front

seq_num	 	Sequence number
obs_id	57055	Observation id
title	ACIS-012367 diagnostics	Proposal title
observer	CHANDRA engineering request/realtime commanding	Principal investig
object	 	Source name
dtcycle	0	
cycle	P	events from which exps? Prim/Second/Both
ra_targ	0.0	Observer's specified target RA [deg]
dec_targ	0.0	Observer's specified target Dec [deg]
ra_nom	241.99035374843	Nominal RA [deg]
dec_nom	-4.0275179812432	Nominal Dec [deg]
roll_nom	218.03486727858	Nominal Roll [deg]
revision	2	Processing version of data
ontime	3045.0012308359	Sum of GTIs [s]
livetime	3006.4435917715	Livetime [s]
ontime0	3044.9601908326	Sum of GTIs [s]
ontime1	3044.9191508293	Sum of GTIs [s]
ontime2	3044.878110826	Sum of GTIs [s]
ontime3	3045.0422708392	Sum of GTIs [s]
ontime6	3044.8370708227	Sum of GTIs [s]
ontime7	3045.0012308359	Sum of GTIs [s]
l2events	176486	Number of level 2 events

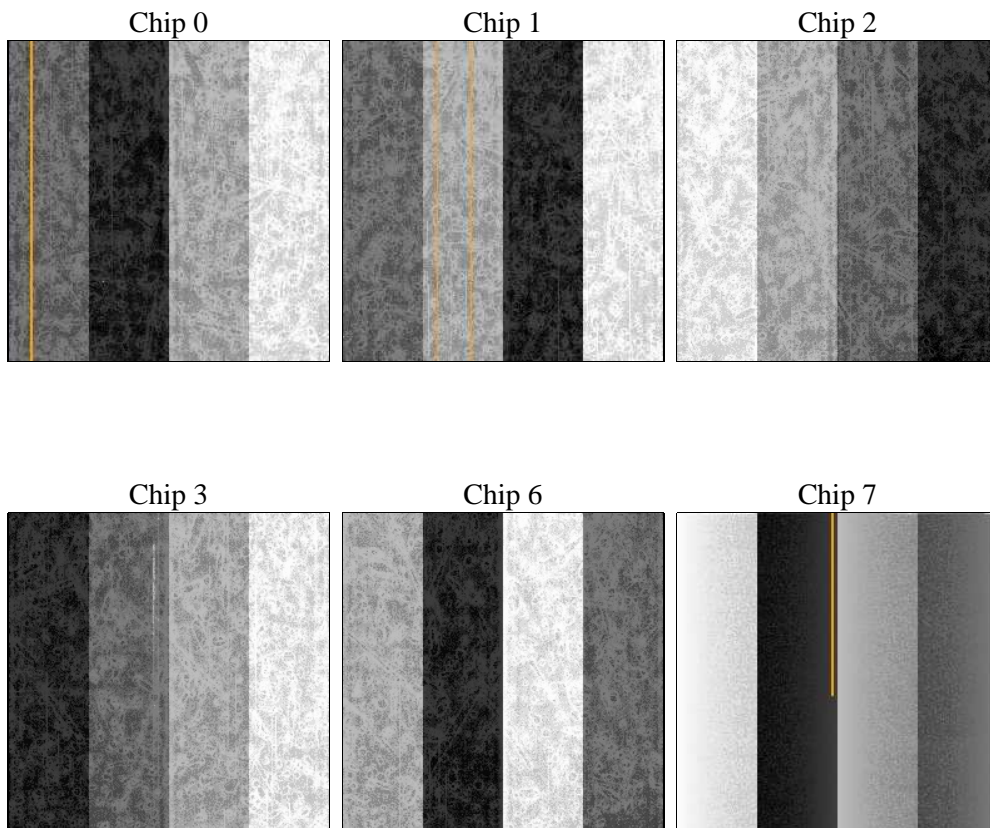
2 OBI

2.1 OBI

2.1.1 Images



2.1.2 Bias



2.1.3 Parameters

obi_num	0	Obi number	sched_exp_time	0.0	[s] Scheduled observation exposure time
ascdsver	8.4.5	Processing system revision	ontime	3045.0012308359	Sum of GTIs [s]
caldsver	4.4.10	 	ontime0	3044.9601908326	Sum of GTIs [s]
date	2012-06-08T20:32:57	Date and time of file creation	ontime1	3044.9191508293	Sum of GTIs [s]
revision	2	Processing version of data	ontime2	3044.878110826	Sum of GTIs [s]
			ontime3	3045.0422708392	Sum of GTIs [s]
			ontime6	3044.8370708227	Sum of GTIs [s]
			ontime7	3045.0012308359	Sum of GTIs [s]
			l1events	380902	Number of level 1 events

2.1.4 Events

	ccd 0	ccd 1	ccd 2	ccd 3	ccd 6	ccd 7		ccd 0	ccd 1	ccd 2	ccd 3	ccd 6	ccd 7
level 1 events	60325	59562	61323	61387	64161	74144	grade 0 events	16346	17018	16496	17028	17480	8385
rejected events	31929	29874	33075	32584	33134	31220		27%	28%	26%	27%	27%	11%
rejected %	52%	50%	53%	53%	51%	42%	grade 1 events	121	123	142	131	100	63
								0%	0%	0%	0%	0%	0%
							grade 2 events	5554	5885	5231	5410	6515	9981
								9%	9%	8%	8%	10%	13%
							grade 3 events	2115	2090	2124	2088	2058	4307
								3%	3%	3%	3%	3%	5%
							grade 4 events	1934	2118	2042	2053	2092	4359
								3%	3%	3%	3%	3%	5%
							grade 5 events	1621	1645	1580	1861	1779	4589
								2%	2%	2%	3%	2%	6%
							grade 6 events	4665	4823	4496	4401	5247	19033
								7%	8%	7%	7%	8%	25%
							grade 7 events	27969	25860	29212	28415	28890	23427
								46%	43%	47%	46%	45%	31%

2.2 Compared Parameters

Parameter	Planned	Actual
Instrument	ACIS	ACIS
Detector	ACIS-012367	ACIS-012367
Grating	NONE	NONE
Data mode	FAINT	FAINT
Observation mode	SECONDARY	SECONDARY
[deg] Pointing RA	0	241.9903537484288
[deg] Pointing Dec	0	-4.027517981243173
[deg] Pointing Roll	0.0	218.0348672785763
[mm] SIM focus pos	-0.68282252473119	-0.68282252473119
[mm] SIM defocus	0.8505140384245534	0.8505140384245534
[mm] SIM translation stage pos	250.4660330802	250.4660330802
[mm] SIM translation stage offset	-0.01005726120527584	-0.01005726120527584
[s] Observation start time (MET)	360974883.059297	360974883.059297
Observation start date	2009-06-09T22:48:03	2009-06-09T22:48:03
[s] Observation end time (MET)	360979429.868845	360979429.868845
Observation end date	2009-06-10T00:03:50	2009-06-10T00:03:49
Read mode	TIMED	TIMED

Parameter	Planned	Actual
Obspar format version number	7	7
Obspar file type	PREDICTED	ACTUAL
Obspar update status	OVERRIDE	OVERRIDE
Number of optional ACIS chips dropped	0	0
On-chip summing requested	N	N
Subarray requested	NONE	NONE
Alternating exposures requested	N	N
[s] Primary exposure time	3.2	3.2

2.3 Star Slots

2.4 FID Slots

A Summary

A.1 Status

V&V Scientist	Jen Lauer
V&V Date (YYYY-MM-DD)	2012.06.12
V&V Edition	1
V&V Disposition and Status	OK
V&V Charge Time	3.0450012308359

A.2 Comments