

V&V Reference Report

L2 ASCDS Version : 8.4.5

Observation 56995 - L2 Version 2
Chandra X-Ray Center

L2 Processing Date : Jun 9 2012

Contents

| | | |
|----------|-------------------------------|----------|
| 1 | Front | 2 |
| 2 | OBI | 3 |
| 2.1 | OBI | 3 |
| 2.1.1 | Images | 3 |
| 2.1.2 | Bias | 3 |
| 2.1.3 | Parameters | 4 |
| 2.1.4 | Events | 4 |
| 2.2 | Compared Parameters | 5 |
| 2.3 | Star Slots | 6 |
| 2.4 | FID Slots | 6 |
| A | Summary | 7 |
| A.1 | Status | 7 |
| A.2 | Comments | 7 |

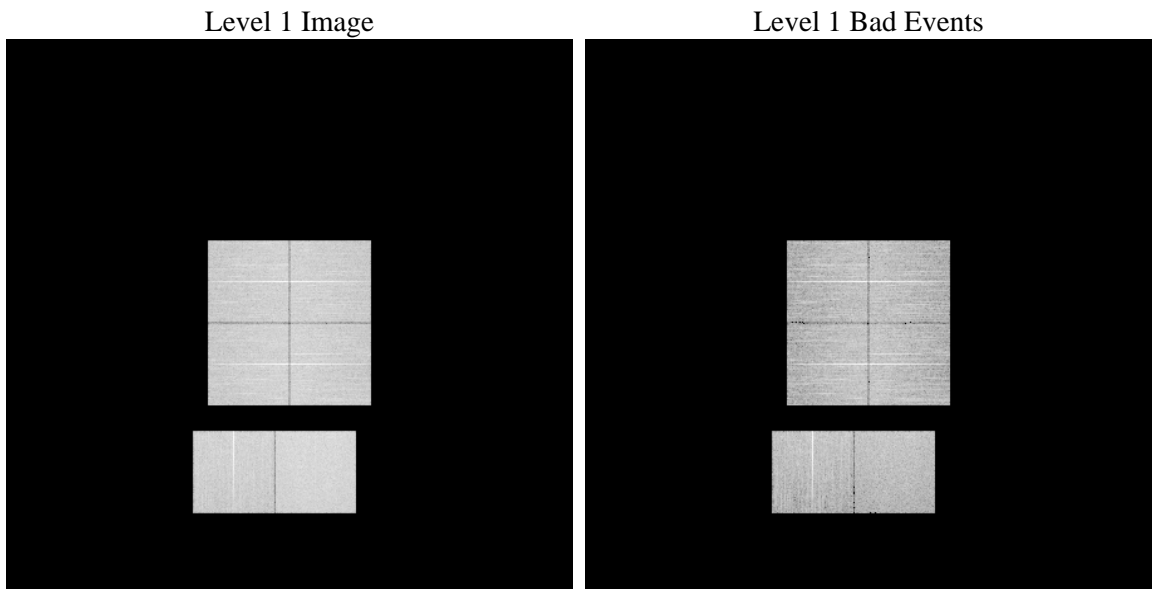
1 Front

| | | |
|----------|---|---|
| seq_num | | Sequence number |
| obs_id | 56995 | Observation id |
| title | ACIS-012367 diagnostics | Proposal title |
| observer | CHANDRA engineering request/realtime commanding | Principal investig |
| object | | Source name |
| dtcycle | 0 | |
| cycle | P | events from which exps? Prim/Second/Both |
| ra_targ | 0.0 | Observer's specified target RA [deg] |
| dec_targ | 0.0 | Observer's specified target Dec [deg] |
| ra_nom | 295.91609546498 | Nominal RA [deg] |
| dec_nom | -34.438466707472 | Nominal Dec [deg] |
| roll_nom | 50.357884523343 | Nominal Roll [deg] |
| revision | 2 | Processing version of data |
| ontime | 8083.1999699473 | Sum of GTIs [s] |
| livetime | 7980.8456248092 | Livetime [s] |
| ontime0 | 8083.1999699473 | Sum of GTIs [s] |
| ontime1 | 8083.1999699473 | Sum of GTIs [s] |
| ontime2 | 8083.1999699473 | Sum of GTIs [s] |
| ontime3 | 8083.1999699473 | Sum of GTIs [s] |
| ontime6 | 8083.1999699473 | Sum of GTIs [s] |
| ontime7 | 8083.1999699473 | Sum of GTIs [s] |
| l2events | 463805 | Number of level 2 events |

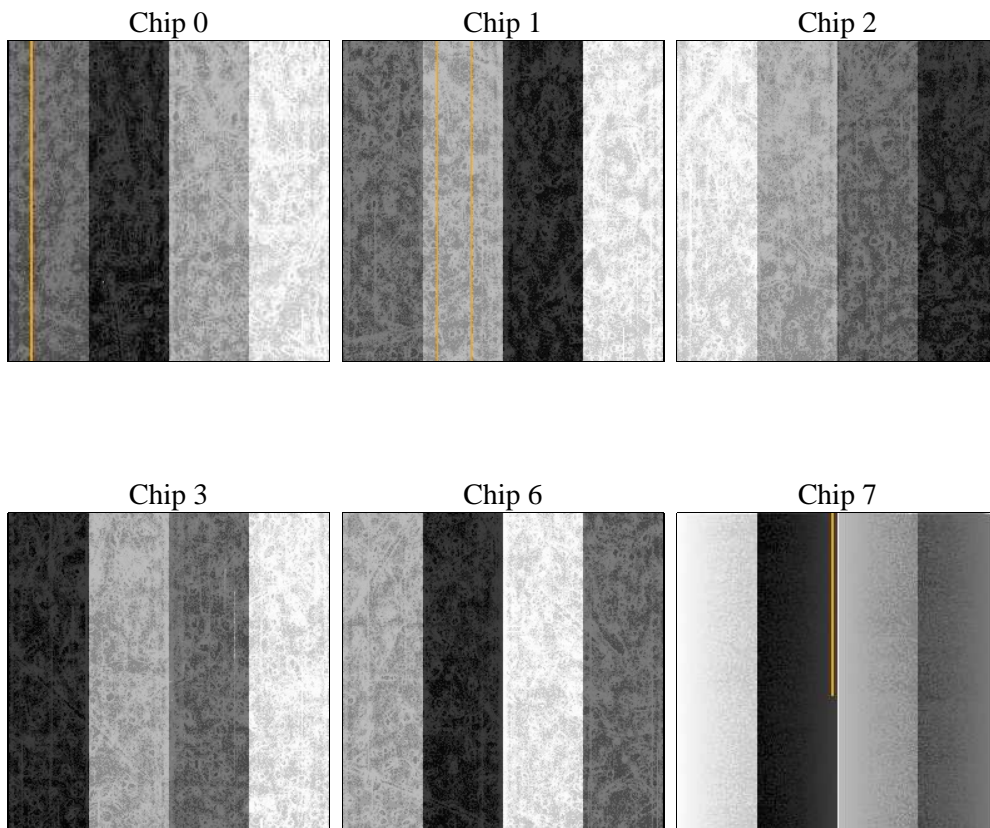
2 OBI

2.1 OBI

2.1.1 Images



2.1.2 Bias



2.1.3 Parameters

| | | | | | |
|----------|---------------------|--------------------------------|----------------|-----------------|---|
| obi_num | 0 | Obi number | sched_exp_time | 0.0 | [s] Scheduled observation exposure time |
| ascdsver | 8.4.5 | Processing system revision | ontime | 8083.1999699473 | Sum of GTIs [s] |
| caldsver | 4.4.10 | | ontime0 | 8083.1999699473 | Sum of GTIs [s] |
| date | 2012-06-09T22:46:14 | Date and time of file creation | ontime1 | 8083.1999699473 | Sum of GTIs [s] |
| revision | 2 | Processing version of data | ontime2 | 8083.1999699473 | Sum of GTIs [s] |
| | | | ontime3 | 8083.1999699473 | Sum of GTIs [s] |
| | | | ontime6 | 8083.1999699473 | Sum of GTIs [s] |
| | | | ontime7 | 8083.1999699473 | Sum of GTIs [s] |
| | | | l1events | 947163 | Number of level 1 events |

2.1.4 Events

| | ccd 0 | ccd 1 | ccd 2 | ccd 3 | ccd 6 | ccd 7 | | ccd 0 | ccd 1 | ccd 2 | ccd 3 | ccd 6 | ccd 7 |
|-----------------|--------|--------|--------|--------|--------|--------|----------------|-------|-------|-------|-------|-------|-------|
| level 1 events | 148172 | 149927 | 152533 | 155695 | 155037 | 185799 | grade 0 events | 41112 | 40330 | 41962 | 41676 | 41824 | 21232 |
| rejected events | 73579 | 74675 | 77256 | 80820 | 77139 | 73266 | | 27% | 26% | 27% | 26% | 26% | 11% |
| rejected % | 49% | 49% | 50% | 51% | 49% | 39% | grade 1 events | 288 | 246 | 335 | 313 | 310 | 169 |
| | | | | | | | | 0% | 0% | 0% | 0% | 0% | 0% |
| | | | | | | | grade 2 events | 13637 | 14555 | 13420 | 13395 | 14314 | 24846 |
| | | | | | | | | 9% | 9% | 8% | 8% | 9% | 13% |
| | | | | | | | grade 3 events | 5175 | 5092 | 5235 | 5247 | 5160 | 10495 |
| | | | | | | | | 3% | 3% | 3% | 3% | 3% | 5% |
| | | | | | | | grade 4 events | 5081 | 5060 | 5250 | 5231 | 5205 | 10681 |
| | | | | | | | | 3% | 3% | 3% | 3% | 3% | 5% |
| | | | | | | | grade 5 events | 4153 | 4415 | 4005 | 4542 | 4513 | 11639 |
| | | | | | | | | 2% | 2% | 2% | 2% | 2% | 6% |
| | | | | | | | grade 6 events | 11354 | 11969 | 11204 | 11100 | 13207 | 47979 |
| | | | | | | | | 7% | 7% | 7% | 7% | 8% | 25% |
| | | | | | | | grade 7 events | 67372 | 68260 | 71122 | 74191 | 70504 | 58758 |
| | | | | | | | | 45% | 45% | 46% | 47% | 45% | 31% |

2.2 Compared Parameters

| Parameter | Planned | Actual |
|-----------------------------------|----------------------|----------------------|
| Instrument | ACIS | ACIS |
| Detector | ACIS-012367 | ACIS-012367 |
| Grating | NONE | NONE |
| Data mode | FAINT | FAINT |
| Observation mode | SECONDARY | SECONDARY |
| [deg] Pointing RA | 0 | 295.9160954649825 |
| [deg] Pointing Dec | 0 | -34.43846670747243 |
| [deg] Pointing Roll | 0.0 | 50.35788452334255 |
| [mm] SIM focus pos | -0.78090834371673 | -0.78090834371673 |
| [mm] SIM defocus | 0.7524282194390134 | 0.7524282194390134 |
| [mm] SIM translation stage pos | 250.4660330802 | 250.4660330802 |
| [mm] SIM translation stage offset | -0.01005726120527584 | -0.01005726120527584 |
| [s] Observation start time (MET) | 363026043.461784 | 363026043.461784 |
| Observation start date | 2009-07-03T16:34:03 | 2009-07-03T16:34:03 |
| [s] Observation end time (MET) | 363035591.410611 | 363035591.410611 |
| Observation end date | 2009-07-03T19:13:11 | 2009-07-03T19:13:11 |
| Read mode | TIMED | TIMED |

| Parameter | Planned | Actual |
|---------------------------------------|-----------|----------|
| Obspar format version number | 7 | 7 |
| Obspar file type | PREDICTED | ACTUAL |
| Obspar update status | OVERRIDE | OVERRIDE |
| Number of optional ACIS chips dropped | 0 | 0 |
| On-chip summing requested | N | N |
| Subarray requested | NONE | NONE |
| Alternating exposures requested | N | N |
| [s] Primary exposure time | 3.2 | 3.2 |

2.3 Star Slots

2.4 FID Slots

A Summary

A.1 Status

| | |
|----------------------------|-----------------|
| V&V Scientist | Jen Lauer |
| V&V Date (YYYY-MM-DD) | 2012.06.13 |
| V&V Edition | 1 |
| V&V Disposition and Status | OK |
| V&V Charge Time | 8.0831999699473 |

A.2 Comments