

V&V Reference Report

L2 ASCDS Version : 8.5.1.1

Observation 5505 - L2 Version 3
Chandra X-Ray Center

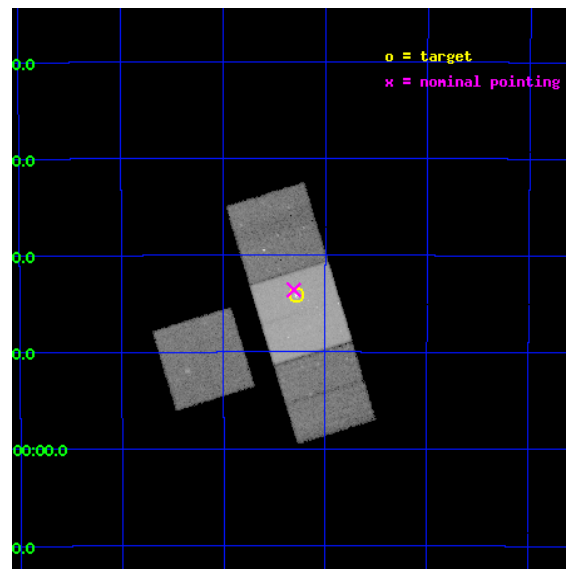
L2 Processing Date : Dec 22 2012

Contents

1	Front	2
2	OBI	3
2.1	OBI	3
2.1.1	Images	3
2.1.2	Bias	3
2.1.3	Parameters	4
2.1.4	Events	4
2.2	Compared Parameters	5
2.3	Aspect	6
2.4	Star Slots	9
2.4.1	Slot 3	9
2.4.2	Slot 4	10
2.4.3	Slot 5	11
2.4.4	Slot 6	12
2.4.5	Slot 7	13
2.5	FID Slots	14
2.5.1	Slot 0	14
2.5.2	Slot 1	15
2.5.3	Slot 2	16
A	Summary	17
A.1	Status	17
A.2	Comments	17

1 Front

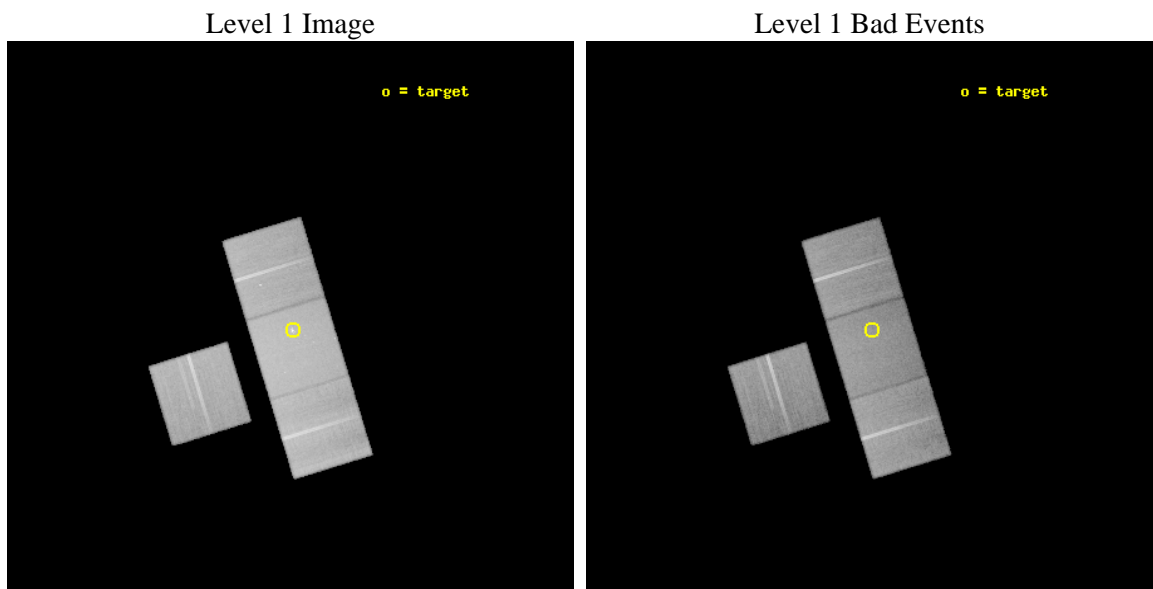
seq_num	400435	Sequence number
obs_id	5505	Observation id
title	X-ray Binaries in the Ultrahigh Collision Rate Globular Cluster NGC 6388	Proposal title
observer	Dr. Haldan Cohn	Principal investigator
object	NGC 6388	Source name
dtcycle	0	
cycle	P	events from which exps? Prim/Second/Both
ra_targ	264.070833	Observer's specified target RA [deg]
dec_targ	-44.735	Observer's specified target Dec [deg]
ra_nom	264.07704714658	Nominal RA [deg]
dec_nom	-44.726376497184	Nominal Dec [deg]
roll_nom	72.973483804803	Nominal Roll [deg]
revision	3	Processing version of data
ontime	45163.899913132	Sum of GTIs [s]
livetime	44573.800311588	Livetime [s]
ontime3	45157.617942721	Sum of GTIs [s]
ontime6	45163.899913132	Sum of GTIs [s]
ontime7	45163.899913132	Sum of GTIs [s]
ontime8	45154.477042139	Sum of GTIs [s]
l2events	331533	Number of level 2 events



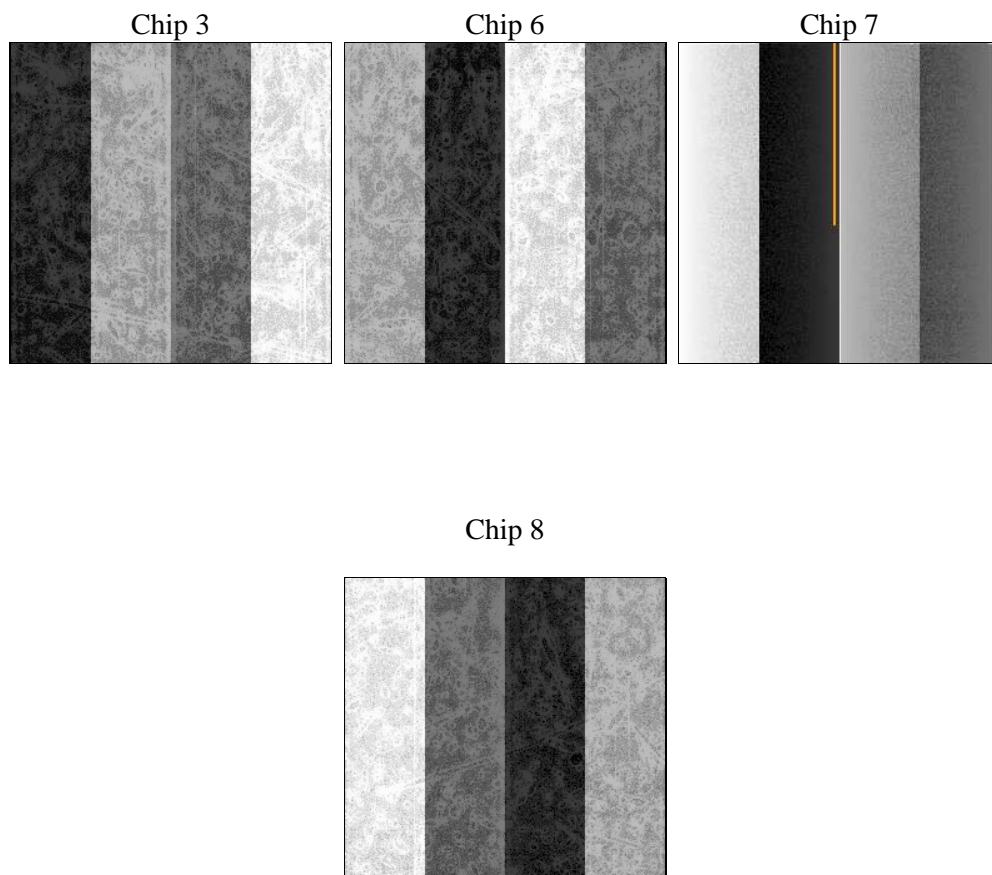
2 OBI

2.1 OBI

2.1.1 Images



2.1.2 Bias



2.1.3 Parameters

obi_num	1	Obi number	sched_exp_time	45000.000000	[s] Scheduled observation exposure time
ascdsver	8.5.1.1	Processing system revision	ontime	45163.899913132	Sum of GTIs [s]
caldsver	4.5.5	 	ontime3	45157.617942721	Sum of GTIs [s]
date	2012-12-22T15:44:31	Date and time of file creation	ontime6	45163.899913132	Sum of GTIs [s]
revision	3	Processing version of data	ontime7	45163.899913132	Sum of GTIs [s]
			ontime8	45154.477042139	Sum of GTIs [s]
			l1events	1651560	Number of level 1 events

2.1.4 Events

	ccd 3	ccd 6	ccd 7	ccd 8
level 1 events	348733	363231	489857	449739
rejected events	304304	315199	280124	350902
rejected %	87%	86%	57%	78%

	ccd 3	ccd 6	ccd 7	ccd 8
grade 0 events	21206	21680	21862	33618
	6%	5%	4%	7%
grade 1 events	213	176	486	327
	0%	0%	0%	0%
grade 2 events	8077	9260	42880	21308
	2%	2%	8%	4%
grade 3 events	3957	4320	18948	10096
	1%	1%	3%	2%
grade 4 events	4061	4285	18601	9157
	1%	1%	3%	2%
grade 5 events	15781	16540	45220	21507
	4%	4%	9%	4%
grade 6 events	7253	8596	107920	24949
	2%	2%	22%	5%
grade 7 events	288185	298374	233940	328777
	82%	82%	47%	73%

2.2 Compared Parameters

Parameter	Planned	Actual	Parameter	Planned	Actual
Instrument	ACIS	ACIS	Obspar format version number	7	7
Detector	ACIS-3678	ACIS-3678	Obspar file type	PREDICTED	ACTUAL
Grating	NONE	NONE	Obspar update status	NONE	UPDATED
Data mode	VFAINT	VFAINT	Number of optional ACIS chips dropped	0	0
Observation mode	POINTING	POINTING	On-chip summing requested	N	N
[deg] Pointing RA	264.086154	264.0770471465778	Subarray requested	NONE	NONE
[deg] Pointing Dec	-44.752850	-44.72637649718391	Alternating exposures requested	N	N
[deg] Pointing Roll	72.823263	72.97348380480339	[s] Primary exposure time	0.000000	3.1
[mm] SIM focus pos	-0.684267	-0.6828225247311905			
[mm] SIM defocus	0	0.001444936568705701			
[mm] SIM translation stage pos	-190.132523	-190.1400660498719			
[mm] SIM translation stage offset	0	0.00754346686406393			
[s] Observation start time (MET)	230438747.184000	230437712.2677			
Observation start date	2005-04-21T02:44:43	2005-04-21T02:28:32			
[s] Observation end time (MET)	230483747.184000	230484164.24481			
Observation end date	2005-04-21T15:14:43	2005-04-21T15:22:44			
Read mode	TIMED	TIMED			

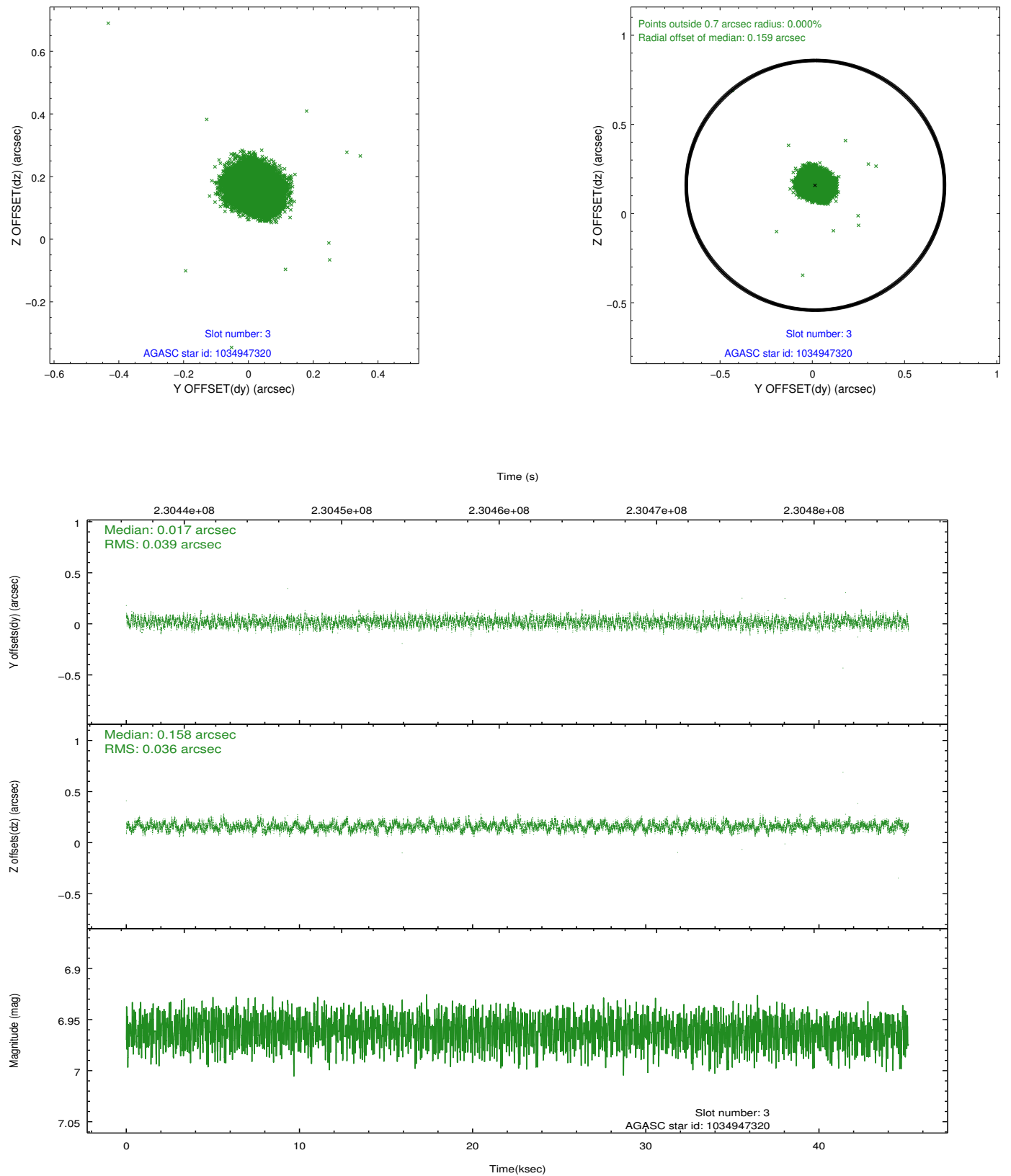
2.3 Aspect

Slot Statistics

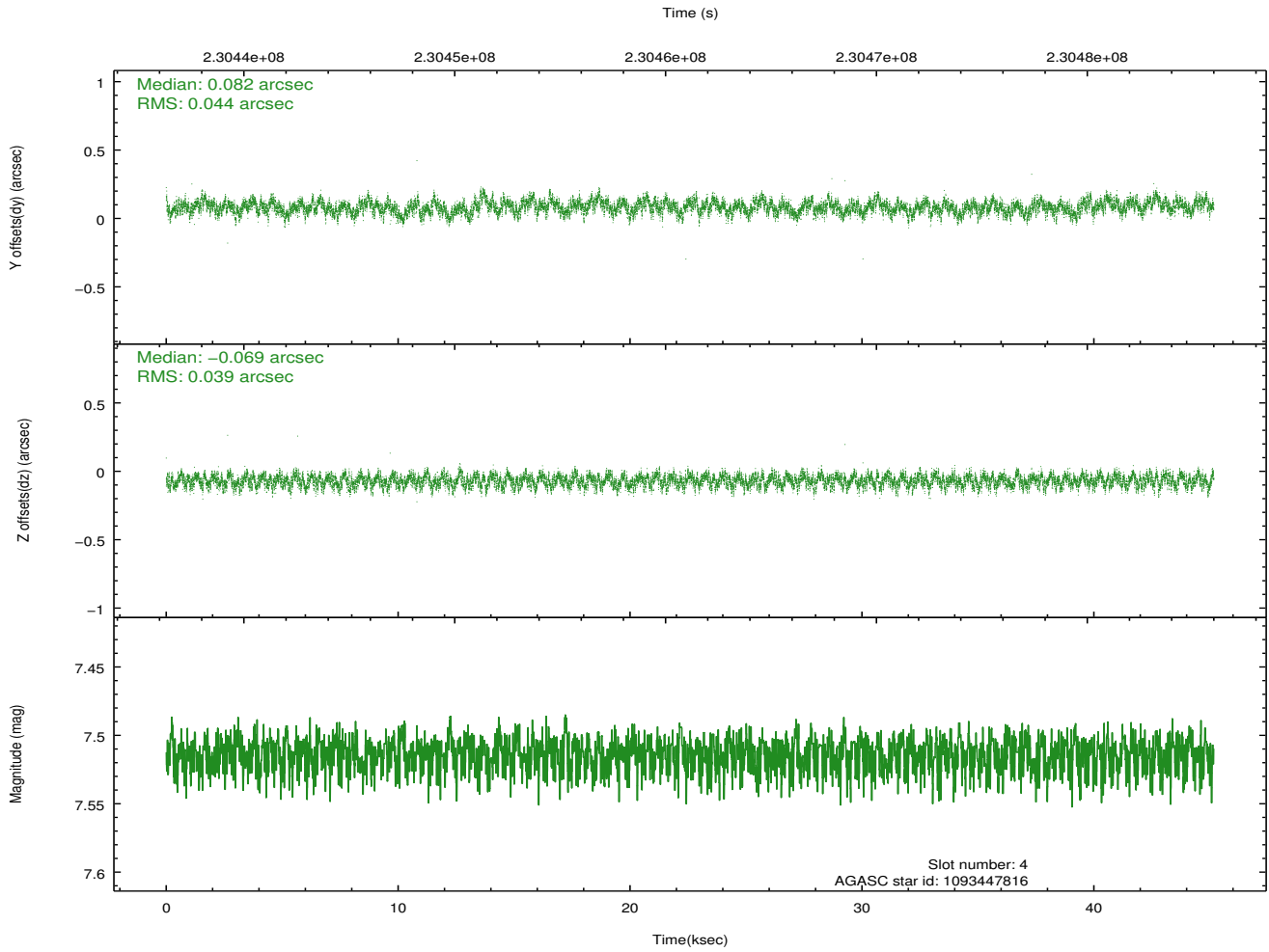
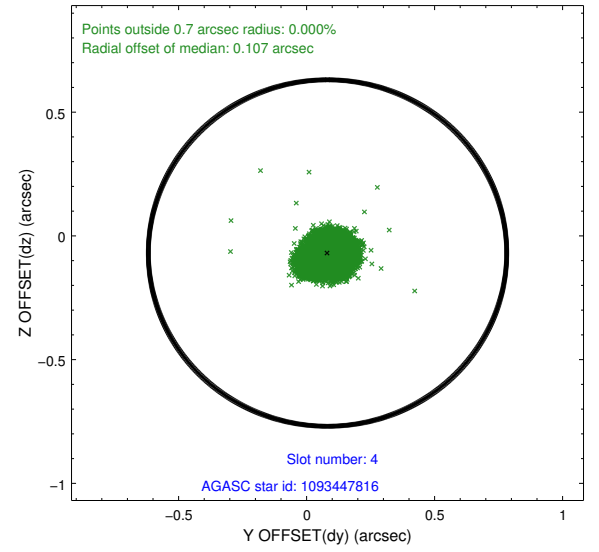
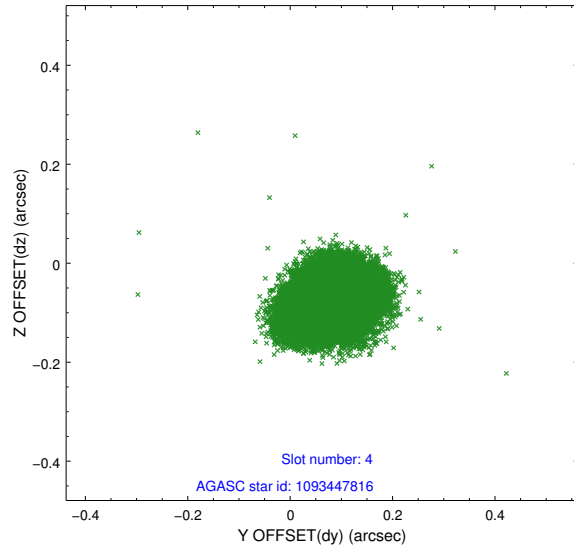
slot	status	id	mag	n_pts	med_dy	med_dz	dr1	dr2	ra	dec	mean_y	mean_z
0	FID	ACIS-S-1	7.19	11017	0.040	0.009	0.014	0.022	0.000000	0.000000	936.58	-1726.27
1	FID	ACIS-S-2	7.10	11018	-0.068	-0.026	0.017	0.028	0.000000	0.000000	-759.44	-1730.84
2	FID	ACIS-S-6	7.35	11017	0.006	0.028	0.014	0.020	0.000000	0.000000	402.23	815.09
3	GUIDE	1034947320	6.96	22032	0.017	0.158	0.057	0.087	264.173264	-44.879236	-369.08	-346.45
4	GUIDE	1093447816	7.51	22031	0.082	-0.069	0.062	0.100	263.791954	-45.303183	-2113.92	126.11
5	GUIDE	1034965928	9.18	22023	-0.131	-0.100	0.084	0.136	263.810524	-44.053836	2192.31	1424.38
6	GUIDE	1034969200	9.35	22015	0.058	-0.117	0.092	0.152	264.026236	-44.199441	1857.82	736.34
7	GUIDE	1035084528	9.26	21953	-0.018	0.129	0.103	0.168	265.175091	-44.382797	2082.75	-2288.39

2.4 Star Slots

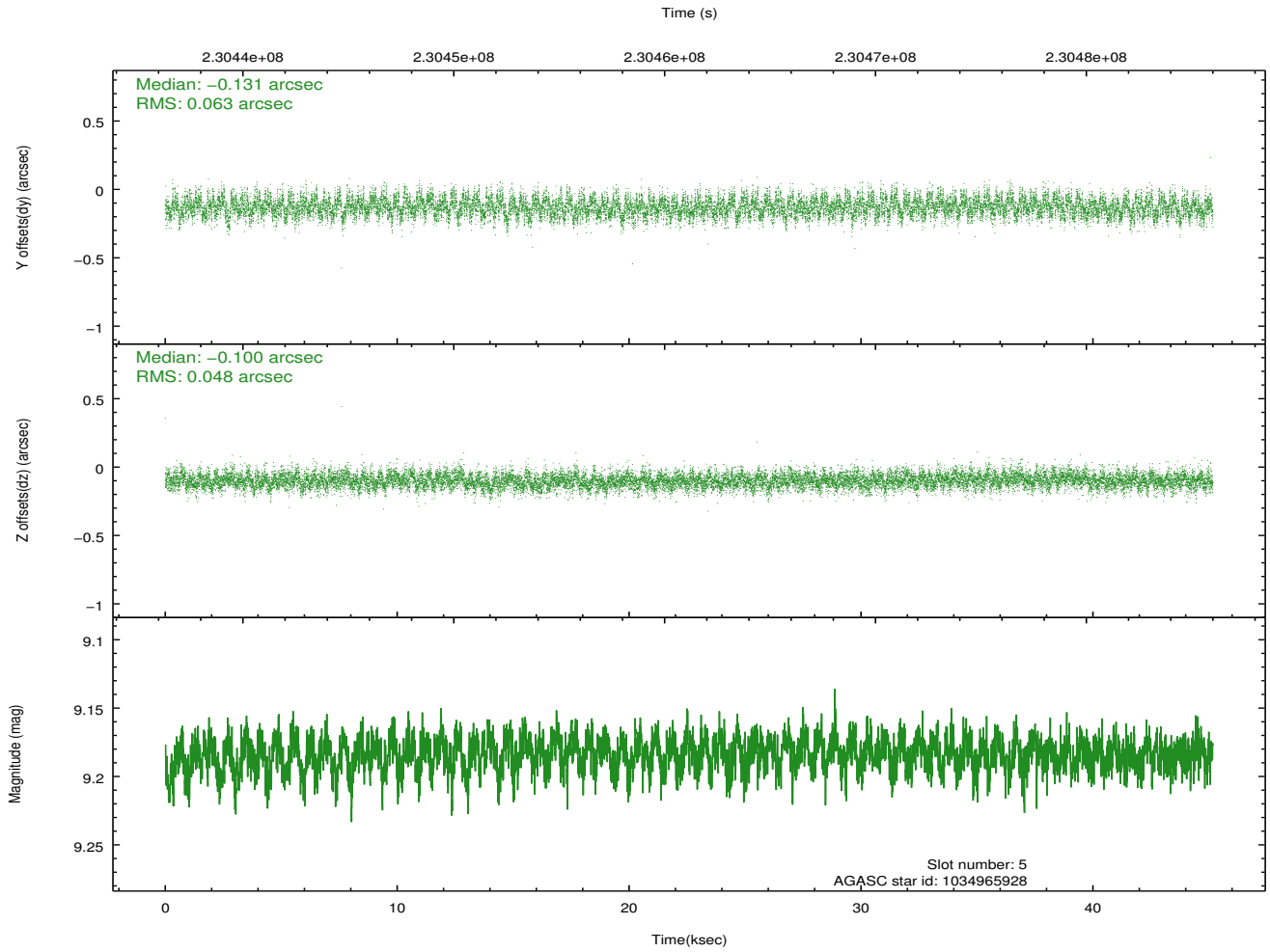
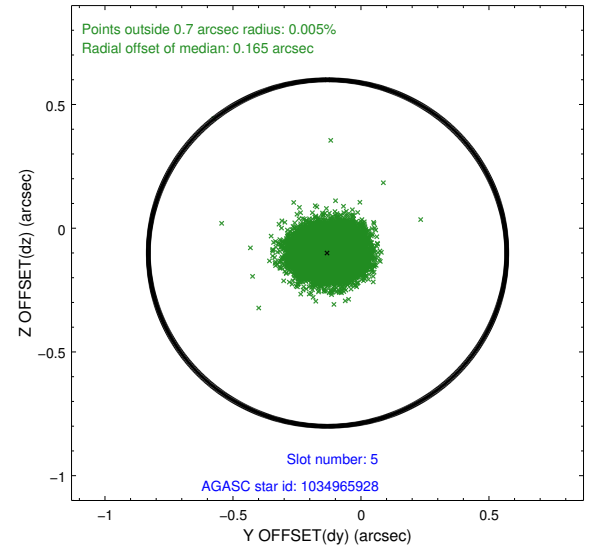
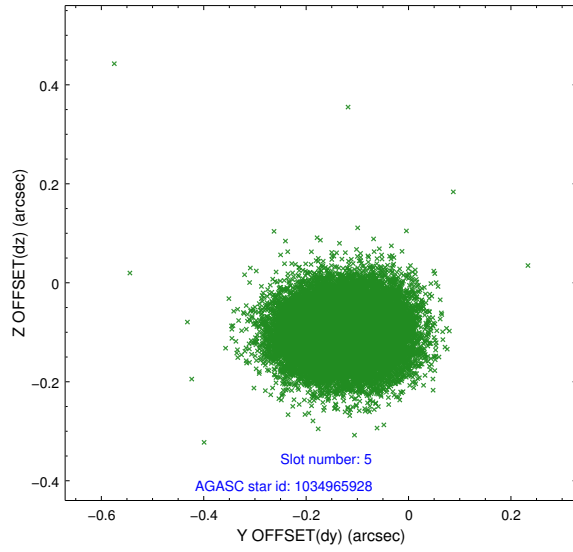
2.4.1 Slot 3



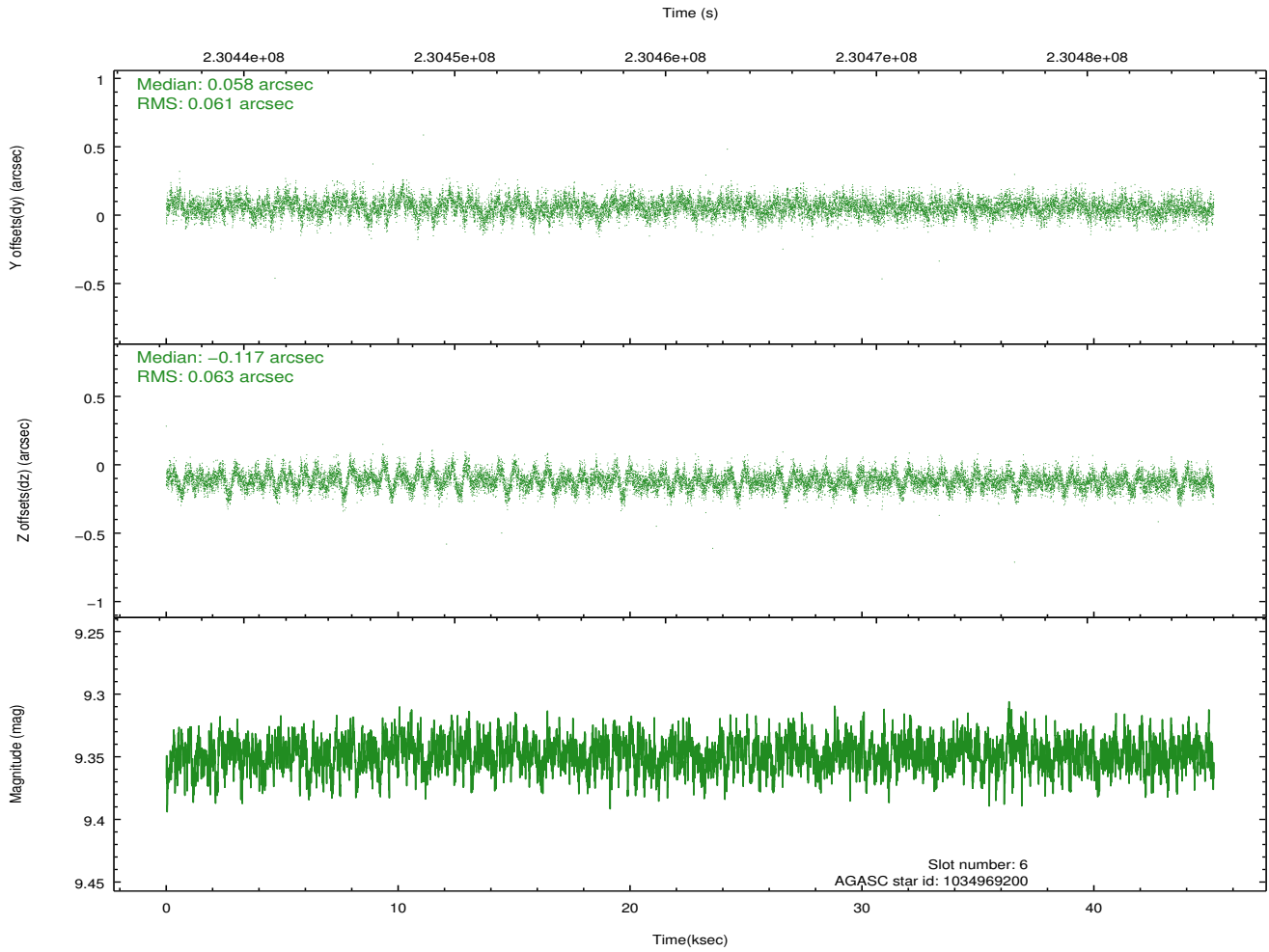
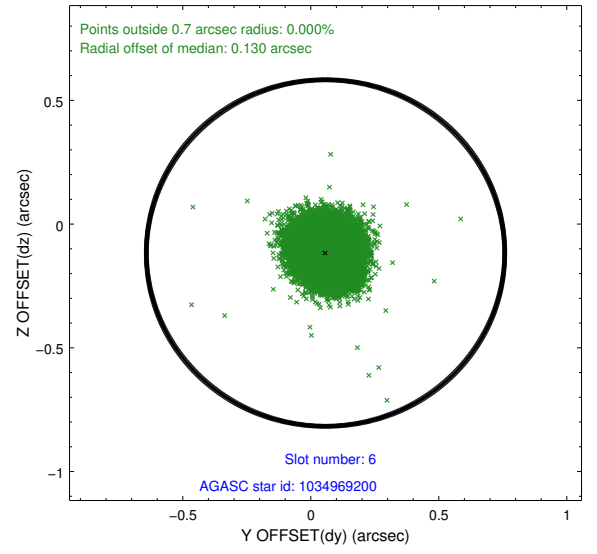
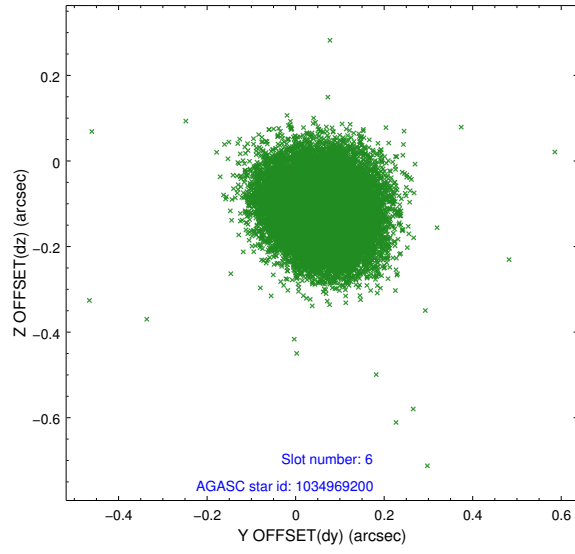
2.4.2 Slot 4



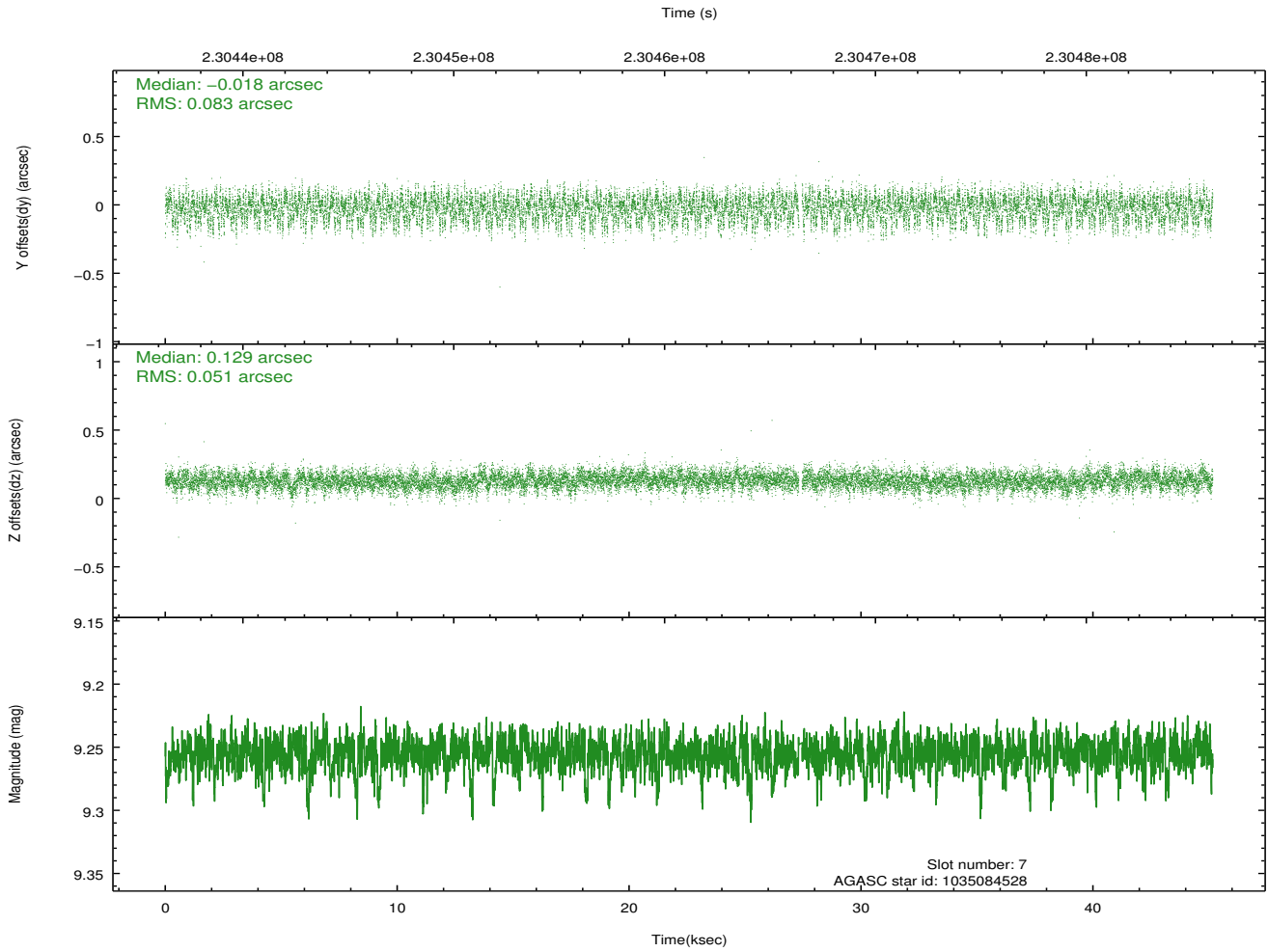
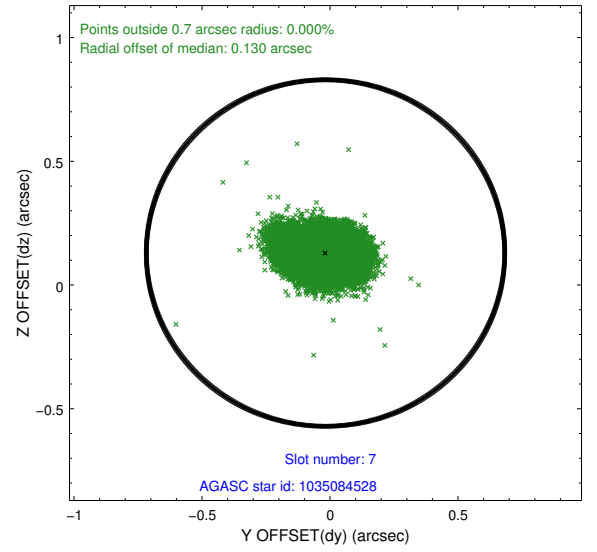
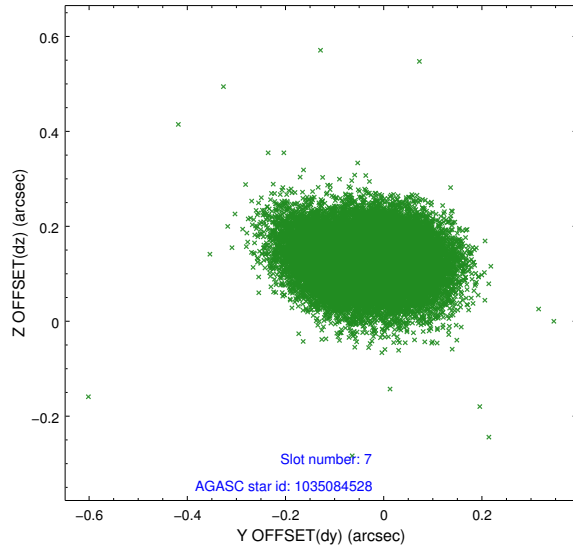
2.4.3 Slot 5



2.4.4 Slot 6

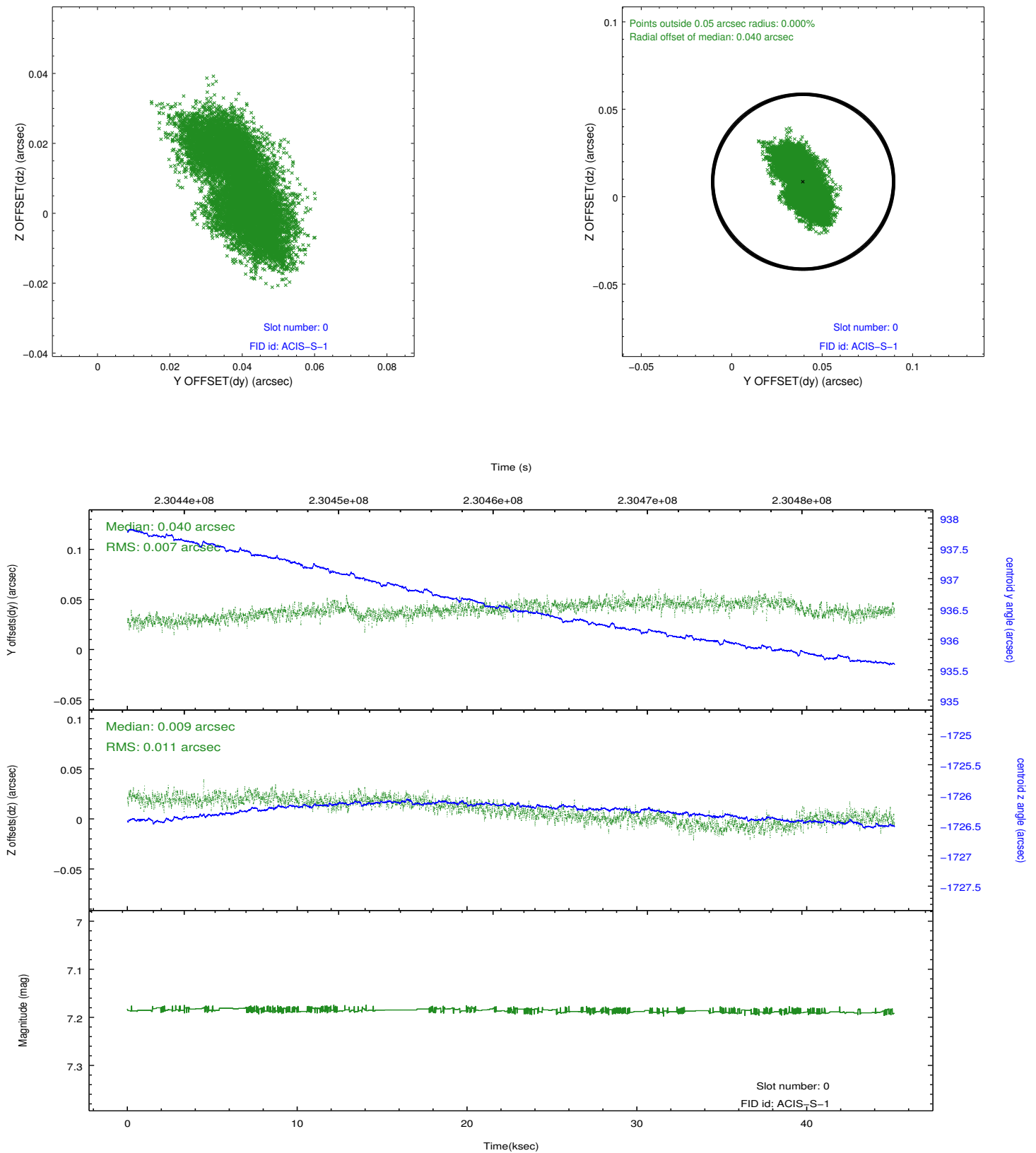


2.4.5 Slot 7

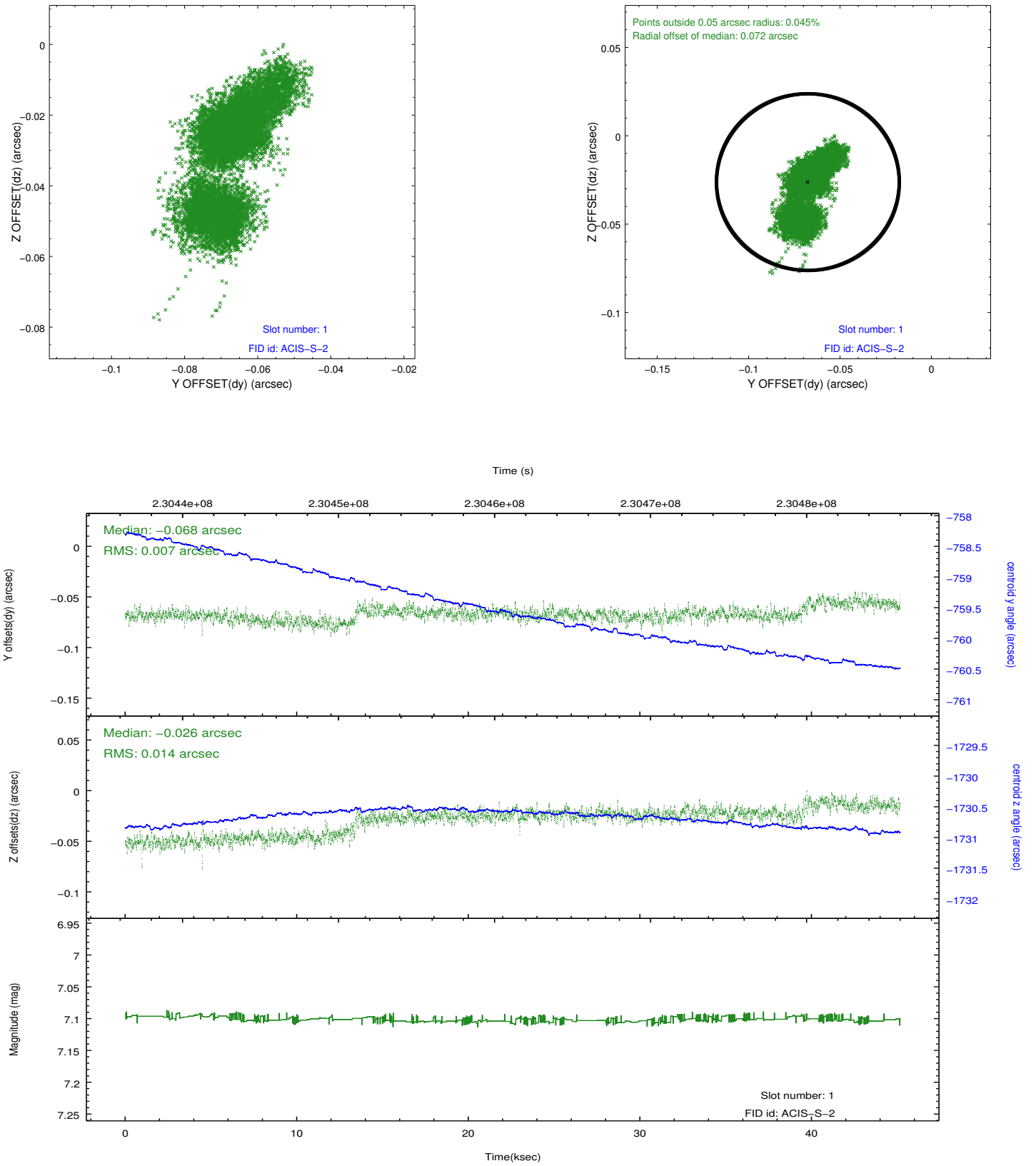


2.5 FID Slots

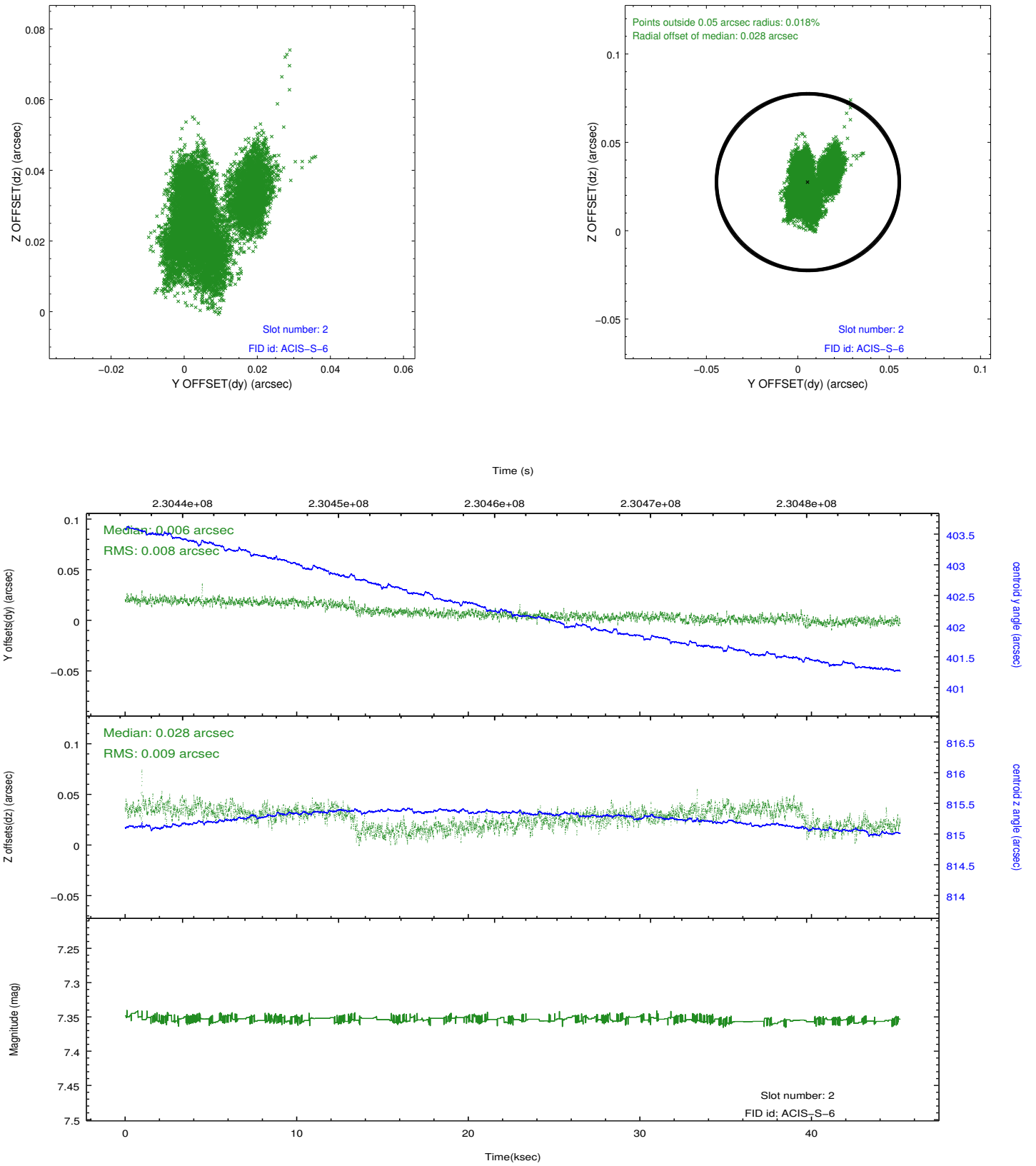
2.5.1 Slot 0



2.5.2 Slot 1



2.5.3 Slot 2



A Summary

A.1 Status

V&V Scientist	Beth Sundheim
V&V Date (YYYY-MM-DD)	2013.01.15
V&V Edition	1
V&V Disposition and Status	OK
V&V Charge Time	45.16389

A.2 Comments

Joint proposal with HST.