

V&V Reference Report

L2 ASCDS Version : 8.4.5

Observation 54535 - L2 Version 1
Chandra X-Ray Center

L2 Processing Date : Jun 22 2012

Contents

| | | |
|----------|-------------------------------|----------|
| 1 | Front | 2 |
| 2 | OBI | 3 |
| 2.1 | OBI | 3 |
| 2.1.1 | Images | 3 |
| 2.1.2 | Bias | 3 |
| 2.1.3 | Parameters | 4 |
| 2.1.4 | Events | 4 |
| 2.2 | Compared Parameters | 5 |
| 2.3 | Star Slots | 6 |
| 2.4 | FID Slots | 6 |
| A | Summary | 7 |
| A.1 | Status | 7 |
| A.2 | Comments | 7 |

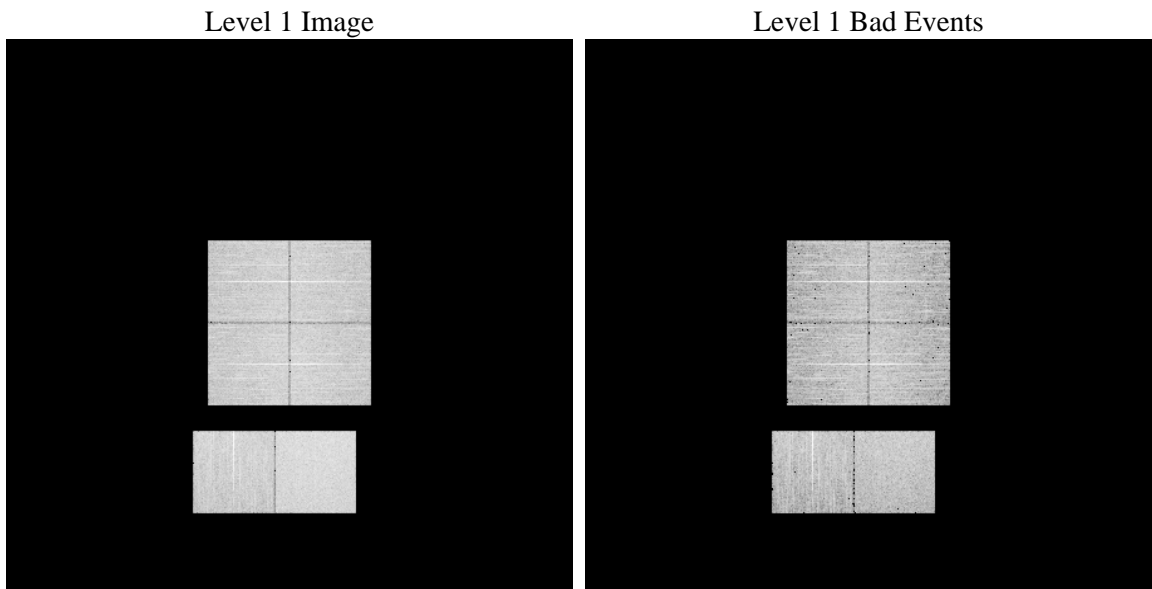
1 Front

| | | |
|----------|---|---|
| seq_num | | Sequence number |
| obs_id | 54535 | Observation id |
| title | ACIS-012367 diagnostics | Proposal title |
| observer | CHANDRA engineering request/realtime commanding | Principal investig |
| object | | Source name |
| dtcycle | 0 | |
| cycle | P | events from which exps? Prim/Second/Both |
| ra_targ | 0.0 | Observer's specified target RA [deg] |
| dec_targ | 0.0 | Observer's specified target Dec [deg] |
| ra_nom | 286.07118050236 | Nominal RA [deg] |
| dec_nom | -4.1985103590692 | Nominal Dec [deg] |
| roll_nom | 144.11235094184 | Nominal Roll [deg] |
| revision | 1 | Processing version of data |
| ontime | 8225.9298679829 | Sum of GTIs [s] |
| livetime | 8121.7681909342 | Livetime [s] |
| ontime0 | 8225.8888279796 | Sum of GTIs [s] |
| ontime1 | 8225.8477879763 | Sum of GTIs [s] |
| ontime2 | 8225.806747973 | Sum of GTIs [s] |
| ontime3 | 8225.9709079862 | Sum of GTIs [s] |
| ontime6 | 8225.7657079697 | Sum of GTIs [s] |
| ontime7 | 8225.9298679829 | Sum of GTIs [s] |
| l2events | 250608 | Number of level 2 events |

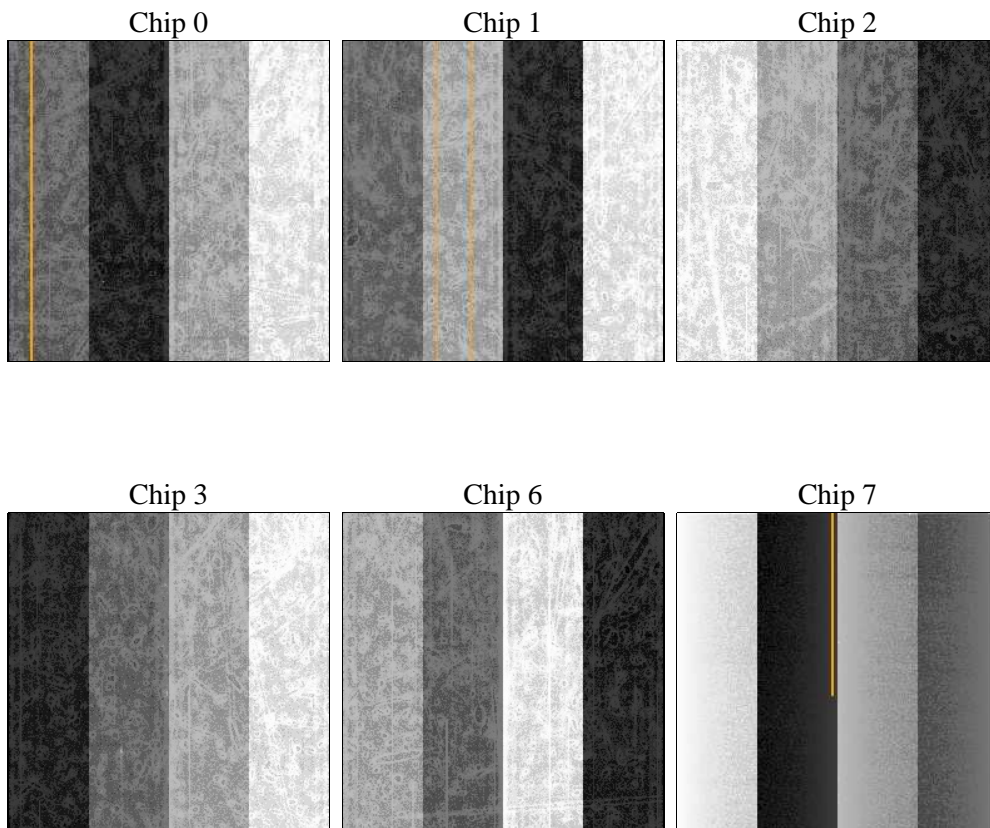
2 OBI

2.1 OBI

2.1.1 Images



2.1.2 Bias



2.1.3 Parameters

| | | | | | |
|----------|---------------------|--------------------------------|----------------|-----------------|---|
| obi_num | 0 | Obi number | sched_exp_time | 0.0 | [s] Scheduled observation exposure time |
| ascdsver | 8.4.5 | Processing system revision | ontime | 8225.9298679829 | Sum of GTIs [s] |
| caldbver | 4.4.10 | | ontime0 | 8225.8888279796 | Sum of GTIs [s] |
| date | 2012-06-22T15:43:38 | Date and time of file creation | ontime1 | 8225.8477879763 | Sum of GTIs [s] |
| revision | 1 | Processing version of data | ontime2 | 8225.806747973 | Sum of GTIs [s] |
| | | | ontime3 | 8225.9709079862 | Sum of GTIs [s] |
| | | | ontime6 | 8225.7657079697 | Sum of GTIs [s] |
| | | | ontime7 | 8225.9298679829 | Sum of GTIs [s] |
| | | | l1events | 570558 | Number of level 1 events |

2.1.4 Events

| | ccd 0 | ccd 1 | ccd 2 | ccd 3 | ccd 6 | ccd 7 | | ccd 0 | ccd 1 | ccd 2 | ccd 3 | ccd 6 | ccd 7 |
|-----------------|-------|-------|-------|-------|-------|--------|----------------|-------|-------|-------|-------|-------|-------|
| level 1 events | 87871 | 86730 | 89500 | 90919 | 93616 | 121922 | grade 0 events | 20578 | 20152 | 21308 | 21131 | 21180 | 11015 |
| rejected events | 48400 | 47286 | 49657 | 51649 | 52502 | 55303 | | 23% | 23% | 23% | 23% | 22% | 9% |
| rejected % | 55% | 54% | 55% | 56% | 56% | 45% | grade 1 events | 126 | 92 | 133 | 164 | 119 | 88 |
| | | | | | | | | 0% | 0% | 0% | 0% | 0% | 0% |
| | | | | | | | grade 2 events | 7501 | 7799 | 7382 | 7093 | 7709 | 14612 |
| | | | | | | | | 8% | 8% | 8% | 7% | 8% | 11% |
| | | | | | | | grade 3 events | 2846 | 2649 | 2757 | 2729 | 2823 | 6056 |
| | | | | | | | | 3% | 3% | 3% | 3% | 3% | 4% |
| | | | | | | | grade 4 events | 2739 | 2677 | 2809 | 2755 | 2717 | 5893 |
| | | | | | | | | 3% | 3% | 3% | 3% | 2% | 4% |
| | | | | | | | grade 5 events | 3182 | 3292 | 3038 | 3520 | 3480 | 8532 |
| | | | | | | | | 3% | 3% | 3% | 3% | 3% | 6% |
| | | | | | | | grade 6 events | 6101 | 6486 | 5950 | 5897 | 7033 | 29558 |
| | | | | | | | | 6% | 7% | 6% | 6% | 7% | 24% |
| | | | | | | | grade 7 events | 44798 | 43583 | 46123 | 47630 | 48555 | 46168 |
| | | | | | | | | 50% | 50% | 51% | 52% | 51% | 37% |

2.2 Compared Parameters

| Parameter | Planned | Actual |
|-----------------------------------|----------------------|----------------------|
| Instrument | ACIS | ACIS |
| Detector | ACIS-012367 | ACIS-012367 |
| Grating | NONE | NONE |
| Data mode | FAINT | FAINT |
| Observation mode | SECONDARY | SECONDARY |
| [deg] Pointing RA | 0 | 286.0711805023608 |
| [deg] Pointing Dec | 0 | -4.19851035906923 |
| [deg] Pointing Roll | 0.0 | 144.1123509418363 |
| SIM focus pos (mm) | -1.4281808131 | -1.4281808131 |
| [mm] SIM defocus | 0.1051557500557434 | 0.1051557500557434 |
| SIM translation stage pos (mm) | 250.4660330802 | 250.4660330802 |
| [mm] SIM translation stage offset | -0.01005726120527584 | -0.01005726120527584 |
| [s] Observation start time (MET) | 456710218.484823 | 456710218.484823 |
| Observation start date | 2012-06-21T23:56:58 | 2012-06-21T23:56:58 |
| [s] Observation end time (MET) | 456719766.243352 | 456719766.243352 |
| Observation end date | 2012-06-22T02:36:06 | 2012-06-22T02:36:06 |
| Read mode | TIMED | TIMED |

| Parameter | Planned | Actual |
|---------------------------------------|-----------|----------|
| Obspar format version number | 7 | 7 |
| Obspar file type | PREDICTED | ACTUAL |
| Obspar update status | OVERRIDE | OVERRIDE |
| Number of optional ACIS chips dropped | 0 | 0 |
| On-chip summing requested | N | N |
| Subarray requested | NONE | NONE |
| Alternating exposures requested | N | N |
| [s] Primary exposure time | 3.2 | 3.2 |

2.3 Star Slots

2.4 FID Slots

A Summary

A.1 Status

| | |
|----------------------------|-----------------|
| V&V Scientist | Beth Sundheim |
| V&V Date (YYYY-MM-DD) | 2012.06.22 |
| V&V Edition | 1 |
| V&V Disposition and Status | OK |
| V&V Charge Time | 8.2259298679829 |

A.2 Comments