

V&V Reference Report

L2 ASCDS Version : 7.6.10

Observation 545 - L2 Version 001
Chandra X-Ray Center

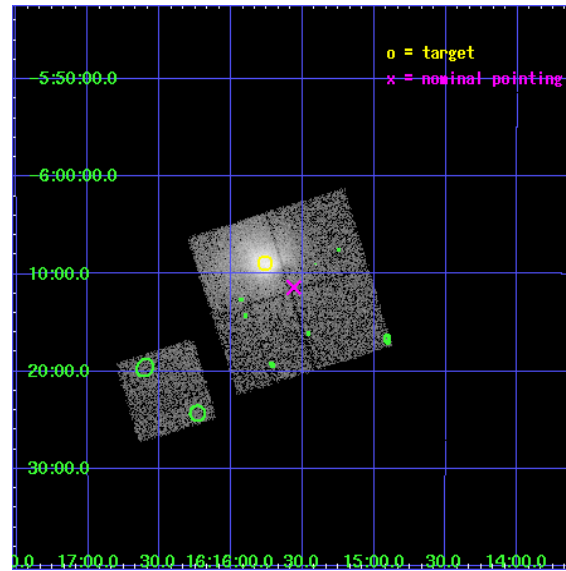
L2 Processing Date : Jun 1 2007

Contents

| | | |
|----------|-------------------------------|-----------|
| 1 | Front | 2 |
| 2 | OBI | 3 |
| 2.1 | OBI | 3 |
| 2.1.1 | Images | 3 |
| 2.1.2 | Bias | 3 |
| 2.1.3 | Parameters | 4 |
| 2.1.4 | Events | 4 |
| 2.2 | Compared Parameters | 5 |
| 2.3 | Aspect | 6 |
| 2.4 | Star Slots | 9 |
| 2.4.1 | Slot 3 | 9 |
| 2.4.2 | Slot 4 | 10 |
| 2.4.3 | Slot 5 | 11 |
| 2.4.4 | Slot 6 | 12 |
| 2.4.5 | Slot 7 | 13 |
| 2.5 | FID Slots | 14 |
| 2.5.1 | Slot 0 | 14 |
| 2.5.2 | Slot 1 | 15 |
| 2.5.3 | Slot 2 | 16 |
| 3 | Point Sources | 17 |
| A | Summary | 18 |
| A.1 | Status | 18 |
| A.2 | Comments | 18 |

1 Front

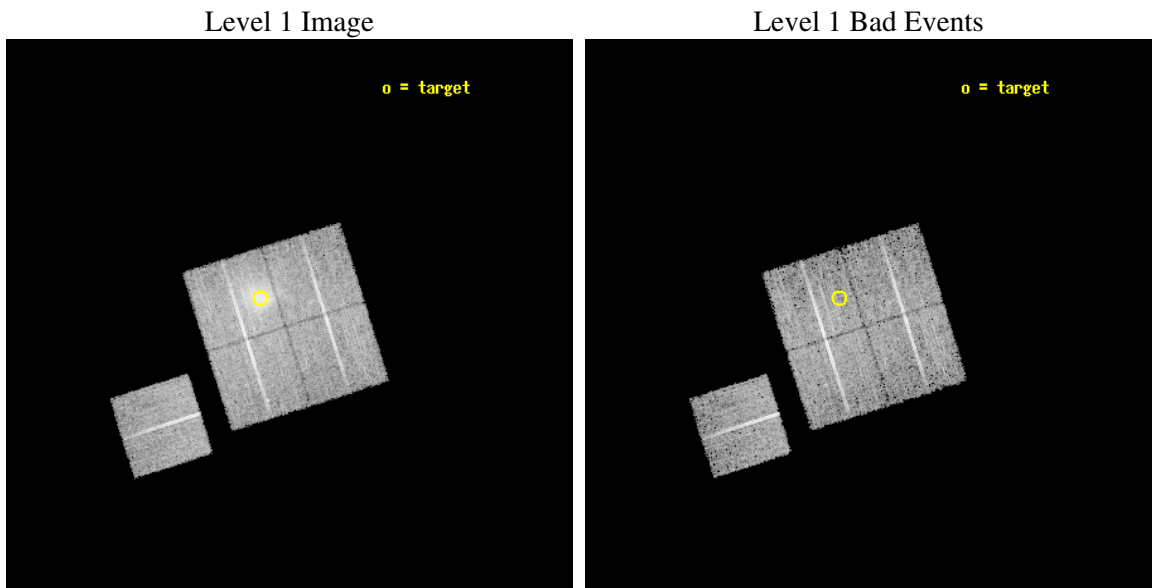
| | |
|----------|------------------------|
| seq_num | 800053 |
| obs_id | 545 |
| title | DETERMINATION OF H0/Q0 |
| observer | DR. LEON VANSPEYBROECK |
| object | A2163 |
| dtcycle | 0 |
| cycle | P |
| ra_targ | 243.9407 |
| dec_targ | -6.148611 |
| ra_nom | 243.89026019355 |
| dec_nom | -6.1898888129465 |
| roll_nom | 252.53576788008 |
| revision | 3 |
| ontime | 9568.0000089109 |
| livetime | 9446.8442316401 |
| ontime0 | 9564.7590287477 |
| ontime1 | 9568.0000089109 |
| ontime2 | 9568.0000089109 |
| ontime3 | 9568.0000089109 |
| ontime6 | 9568.0000089109 |
| l2events | 57095 |



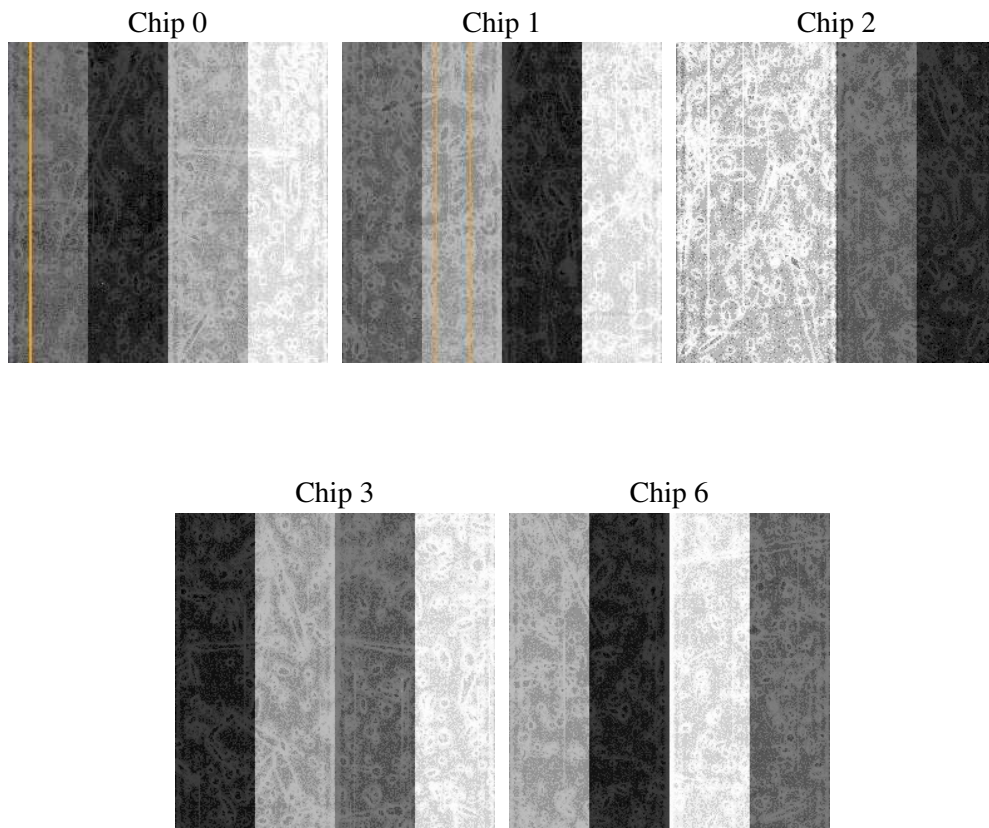
2 OBI

2.1 OBI

2.1.1 Images



2.1.2 Bias



2.1.3 Parameters

| | |
|----------|---------------------|
| obi_num | 0 |
| ascdsver | 7.6.10 |
| caldbver | 3.4.0 |
| date | 2007-06-01T02:50:32 |
| revision | 3 |

| | |
|----------------|-----------------|
| sched_exp_time | 9500.000000 |
| ontime | 9568.0000089109 |
| ontime0 | 9564.7590287477 |
| ontime1 | 9568.0000089109 |
| ontime2 | 9568.0000089109 |
| ontime3 | 9568.0000089109 |
| ontime6 | 9568.0000089109 |
| l1events | 292145 |

2.1.4 Events

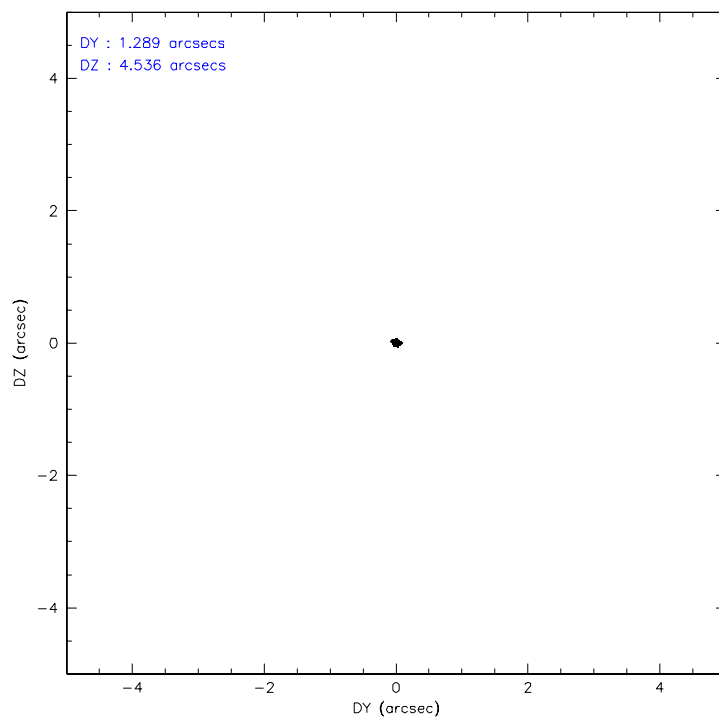
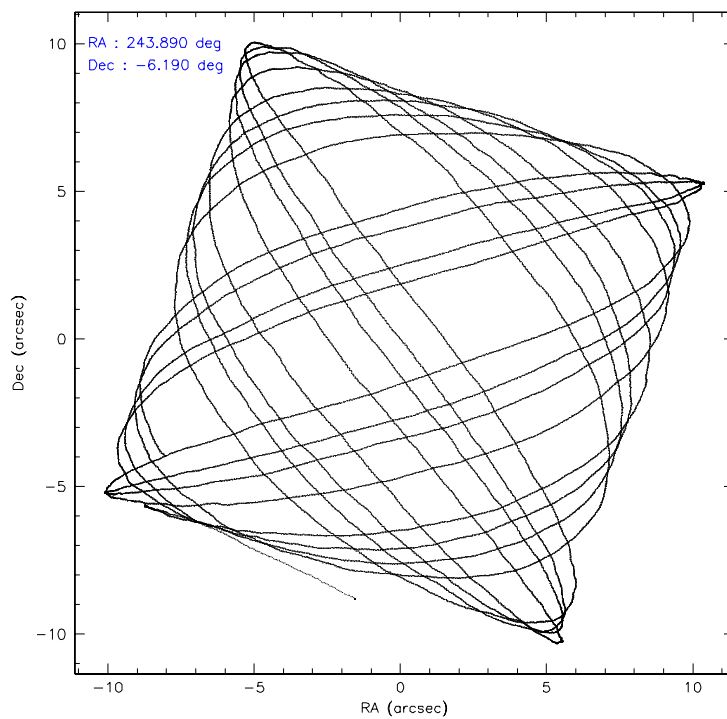
| | ccd 0 | ccd 1 | ccd 2 | ccd 3 | ccd 6 |
|-----------------|-------|-------|-------|-------|-------|
| level 1 events | 51146 | 52524 | 55306 | 80945 | 52224 |
| rejected events | 44316 | 42049 | 48144 | 49011 | 46085 |
| rejected % | 86% | 80% | 87% | 60% | 88% |

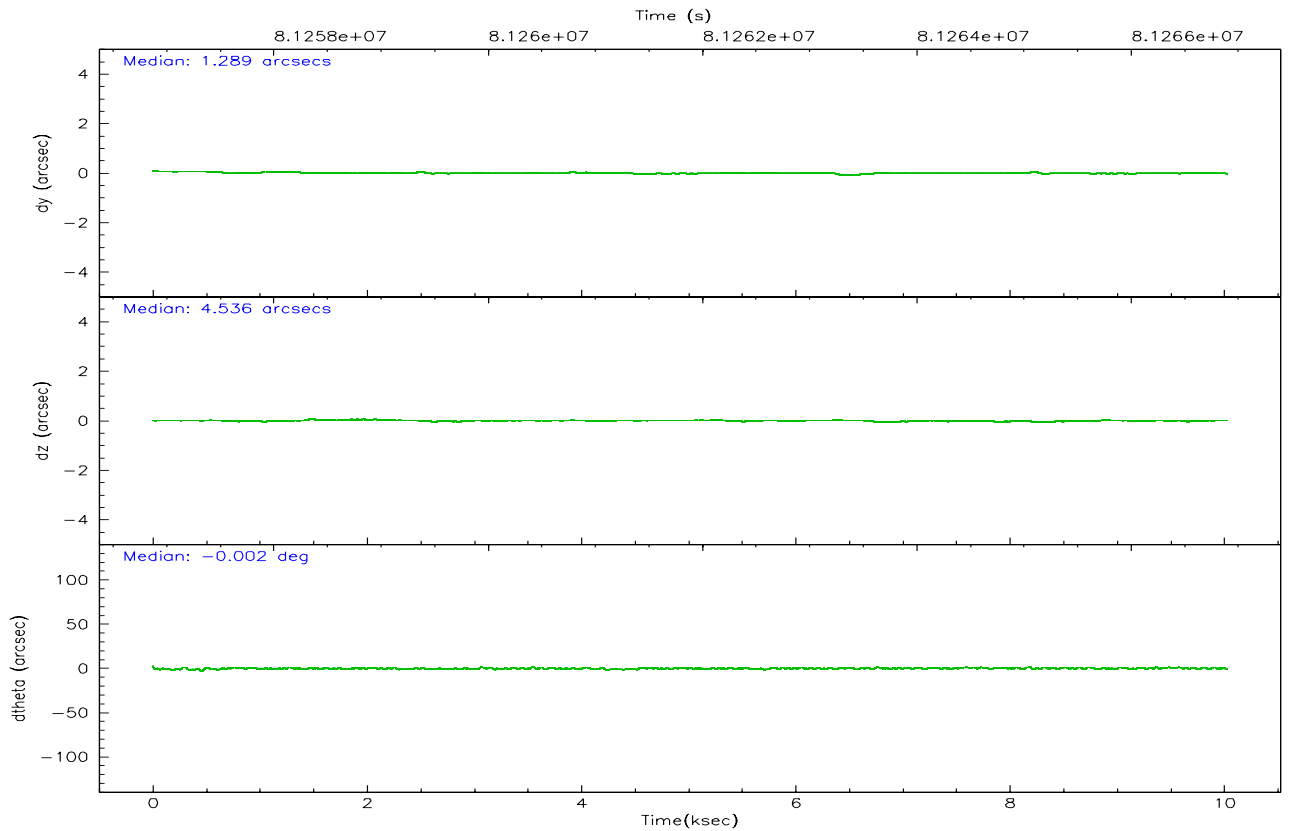
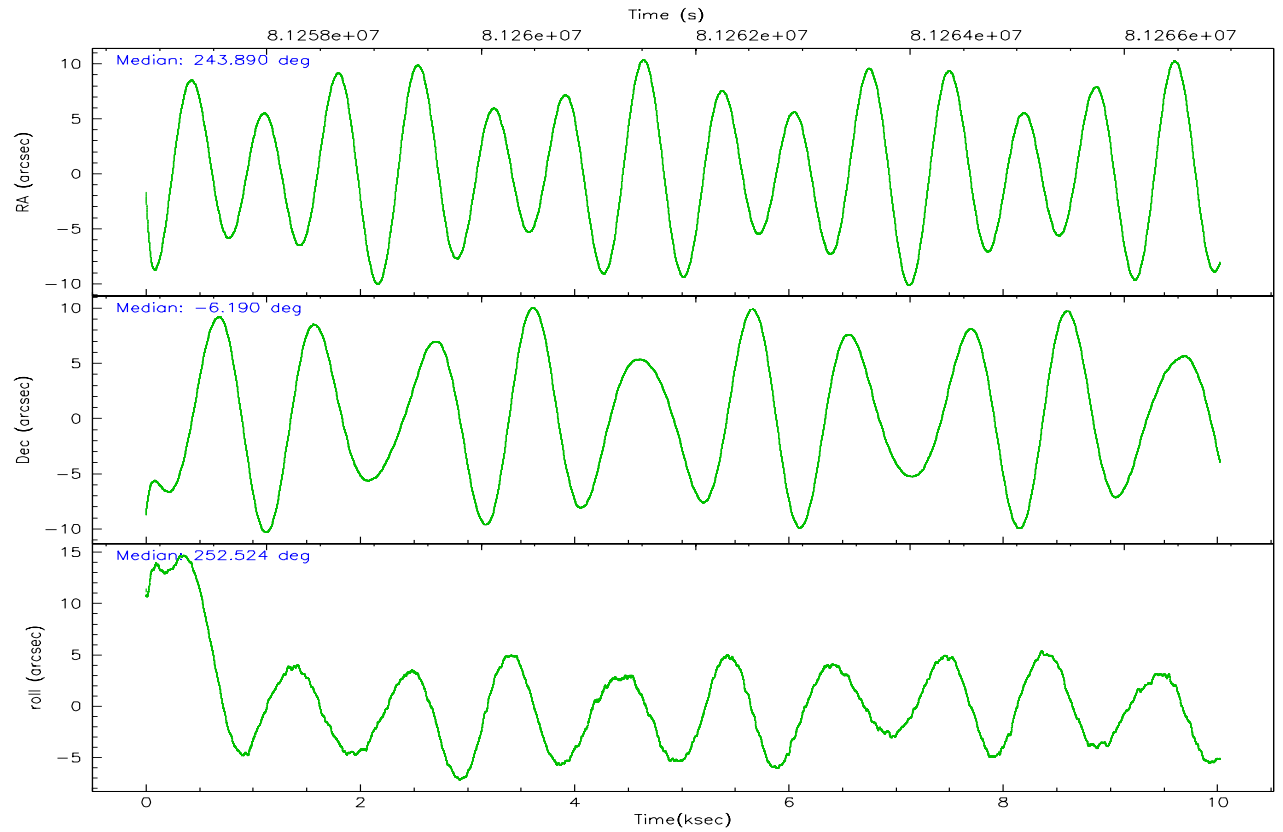
| | ccd 0 | ccd 1 | ccd 2 | ccd 3 | ccd 6 |
|----------------|-------|-------|-------|-------|-------|
| grade 0 events | 3164 | 5944 | 3464 | 23229 | 2659 |
| | 6% | 11% | 6% | 28% | 5% |
| grade 1 events | 35 | 40 | 22 | 100 | 22 |
| | 0% | 0% | 0% | 0% | 0% |
| grade 2 events | 1352 | 1661 | 1354 | 3987 | 1164 |
| | 2% | 3% | 2% | 4% | 2% |
| grade 3 events | 633 | 814 | 620 | 1462 | 555 |
| | 1% | 1% | 1% | 1% | 1% |
| grade 4 events | 524 | 791 | 646 | 1504 | 620 |
| | 1% | 1% | 1% | 1% | 1% |
| grade 5 events | 1816 | 1906 | 1732 | 2009 | 2101 |
| | 3% | 3% | 3% | 2% | 4% |
| grade 6 events | 1158 | 1269 | 1078 | 1759 | 1147 |
| | 2% | 2% | 1% | 2% | 2% |
| grade 7 events | 42464 | 40099 | 46390 | 46895 | 43956 |
| | 83% | 76% | 83% | 57% | 84% |

2.2 Compared Parameters

| Parameter | Planned | Actual | Parameter | Planned | Actual |
|-----------------------------------|---------------------|----------------------|---------------------------------------|-----------|---------|
| Instrument | ACIS | ACIS | Obspar format version number | 6 | 6 |
| Detector | ACIS-01236 | ACIS-01236 | Obspar file type | PREDICTED | ACTUAL |
| Grating | NONE | NONE | Obspar update status | NONE | UPDATED |
| Data mode | VFAINT | VFAINT | Number of optional ACIS chips dropped | 0 | 0 |
| Observation mode | POINTING | POINTING | On-chip summing requested | N | N |
| Pointing RA | 243.884378 | 243.8902601935529 | Subarray requested | NONE | NONE |
| Pointing Dec | -6.162954 | -6.189888812946464 | Alternating exposures requested | N | N |
| Pointing Roll | 252.326450 | 252.5357678800845 | Primary exposure time | 3.200000 | 3.2 |
| SIM focus pos (mm) | -0.782348 | -0.7809083437167272 | | | |
| SIM defocus (mm) | 0 | 0.001439871863259334 | | | |
| SIM translation stage pos (mm) | -236.532463 | -236.5241547330508 | | | |
| SIM translation stage offset (mm) | 2.94 | 2.931701730121091 | | | |
| Observation start time | 81257397.184000 | 81256262.25576399 | | | |
| Observation start date | 2000-07-29T11:28:53 | 2000-07-29T11:11:02 | | | |
| Observation end time | 81266897.184000 | 81267685.881189 | | | |
| Observation end date | 2000-07-29T14:07:13 | 2000-07-29T14:21:25 | | | |
| Read mode | TIMED | TIMED | | | |

2.3 Aspect



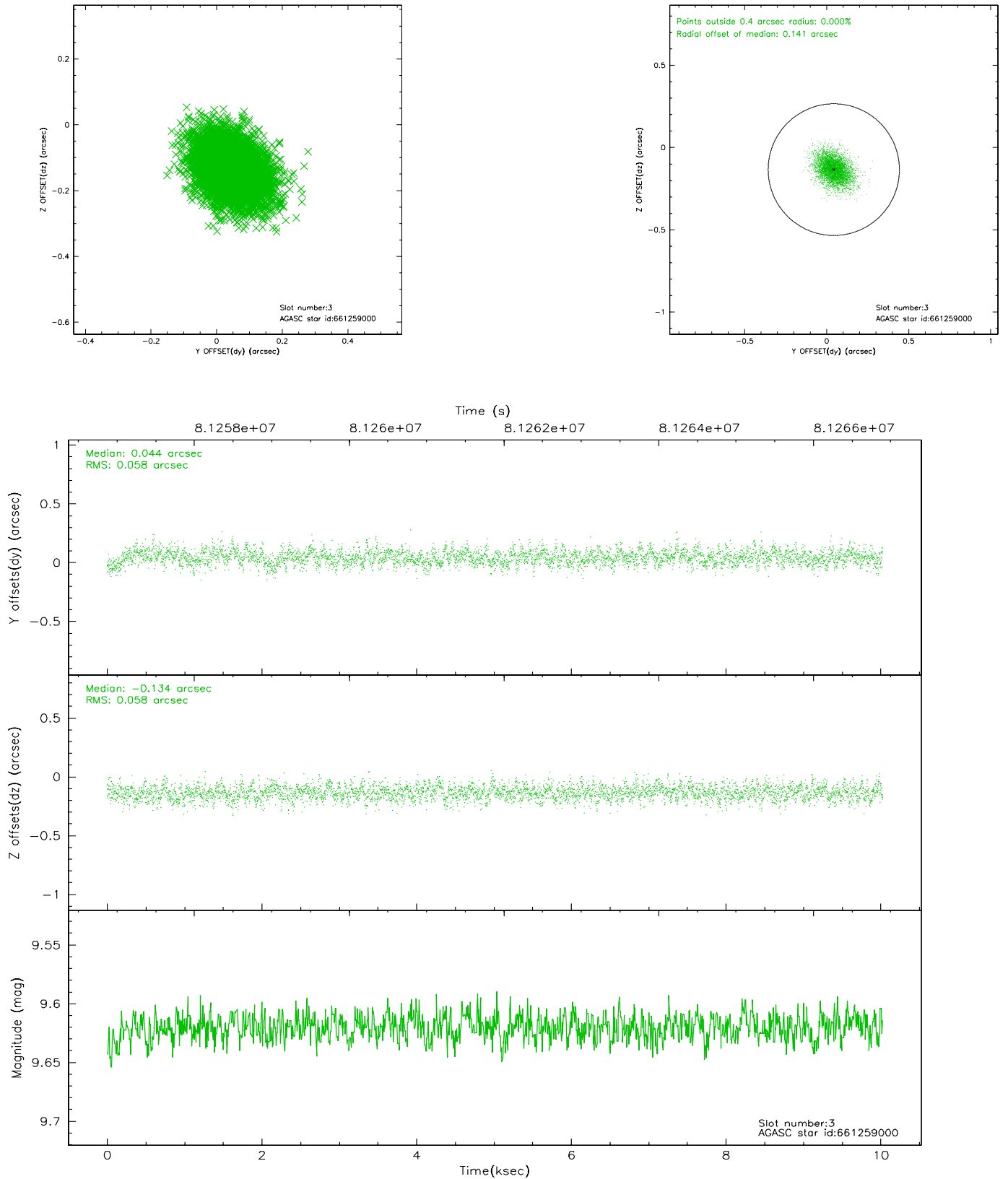


Slot Statistics

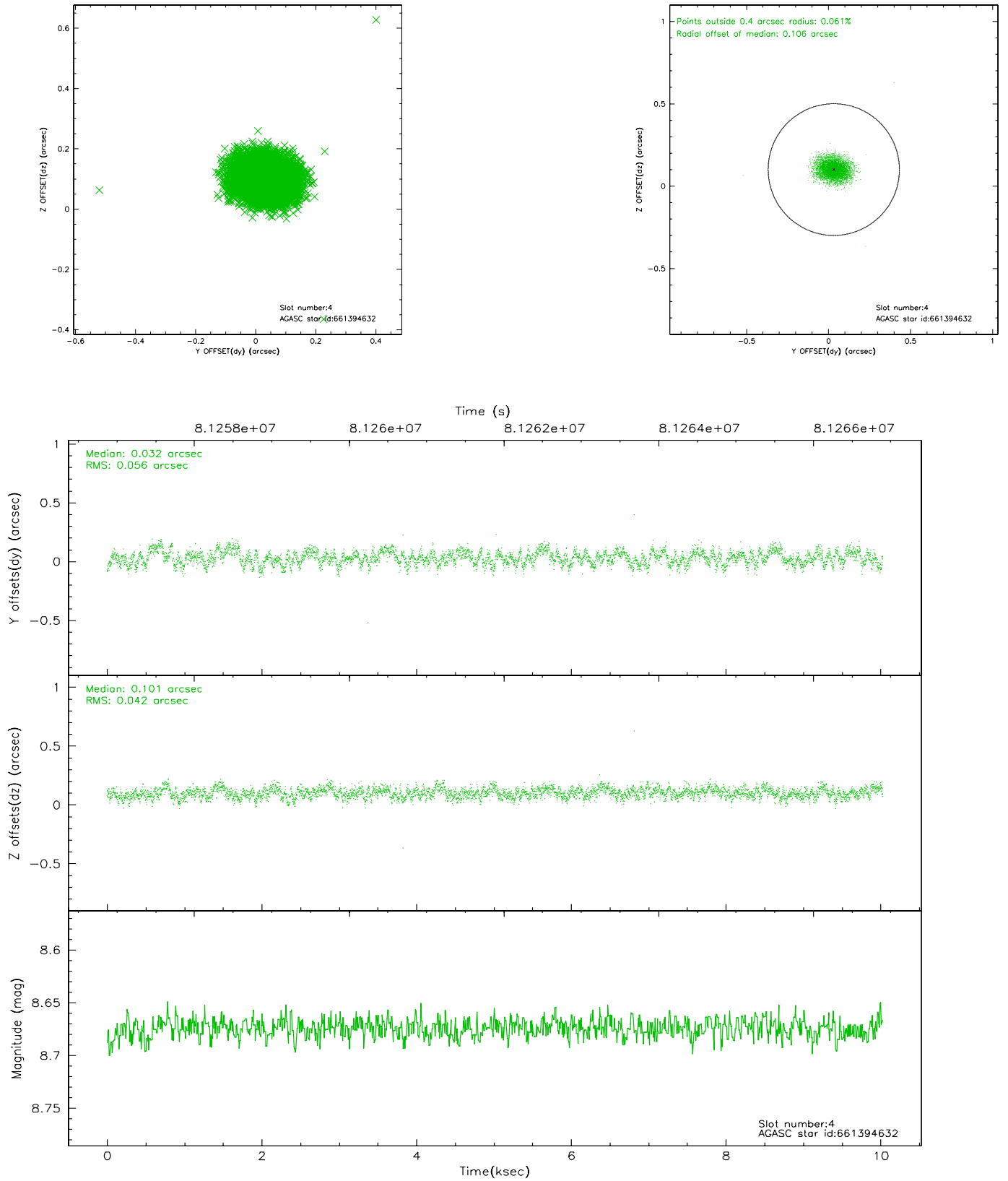
| slot | status | id | mag | n_pts | med_dy | med_dz | dr1 | dr2 | ra | dec | mean_y | mean_z |
|------|--------|-----------|------|-------|--------|--------|-------|-------|------------|-----------|----------|----------|
| 0 | FID | ACIS-I-2 | 7.14 | 2446 | -0.007 | 0.000 | 0.009 | 0.016 | 0.000000 | 0.000000 | -755.43 | -774.29 |
| 1 | FID | ACIS-I-4 | 7.22 | 2446 | -0.053 | 0.015 | 0.006 | 0.010 | 0.000000 | 0.000000 | 2158.38 | 1131.66 |
| 2 | FID | ACIS-I-5 | 7.23 | 2445 | -0.041 | 0.054 | 0.009 | 0.015 | 0.000000 | 0.000000 | -1808.74 | 1130.55 |
| 3 | GUIDE | 661259000 | 9.62 | 4890 | 0.044 | -0.134 | 0.086 | 0.145 | 243.433065 | -6.229365 | 719.75 | -1465.82 |
| 4 | GUIDE | 661394632 | 8.67 | 4891 | 0.032 | 0.101 | 0.074 | 0.118 | 244.012741 | -6.597743 | 1352.66 | 912.97 |
| 5 | GUIDE | 661395928 | 9.74 | 4890 | 0.041 | 0.179 | 0.093 | 0.151 | 244.257186 | -6.222729 | -198.92 | 1337.32 |
| 6 | GUIDE | 661260568 | 9.73 | 4891 | -0.040 | -0.108 | 0.111 | 0.186 | 243.232041 | -6.293387 | 1158.39 | -2080.43 |
| 7 | GUIDE | 661393160 | 9.59 | 4887 | -0.080 | -0.039 | 0.100 | 0.160 | 244.614442 | -6.074956 | -1093.29 | 2394.12 |

2.4 Star Slots

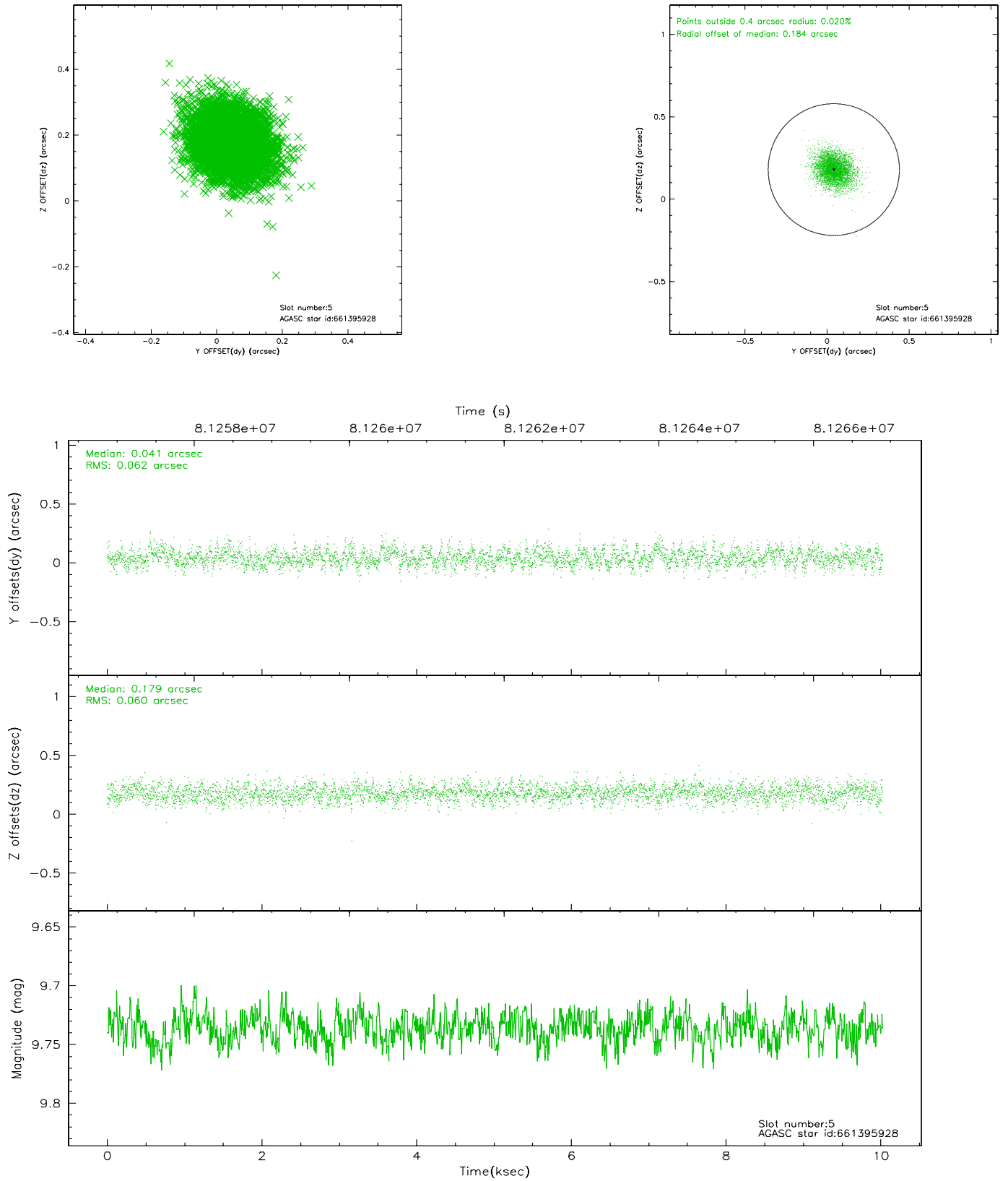
2.4.1 Slot 3



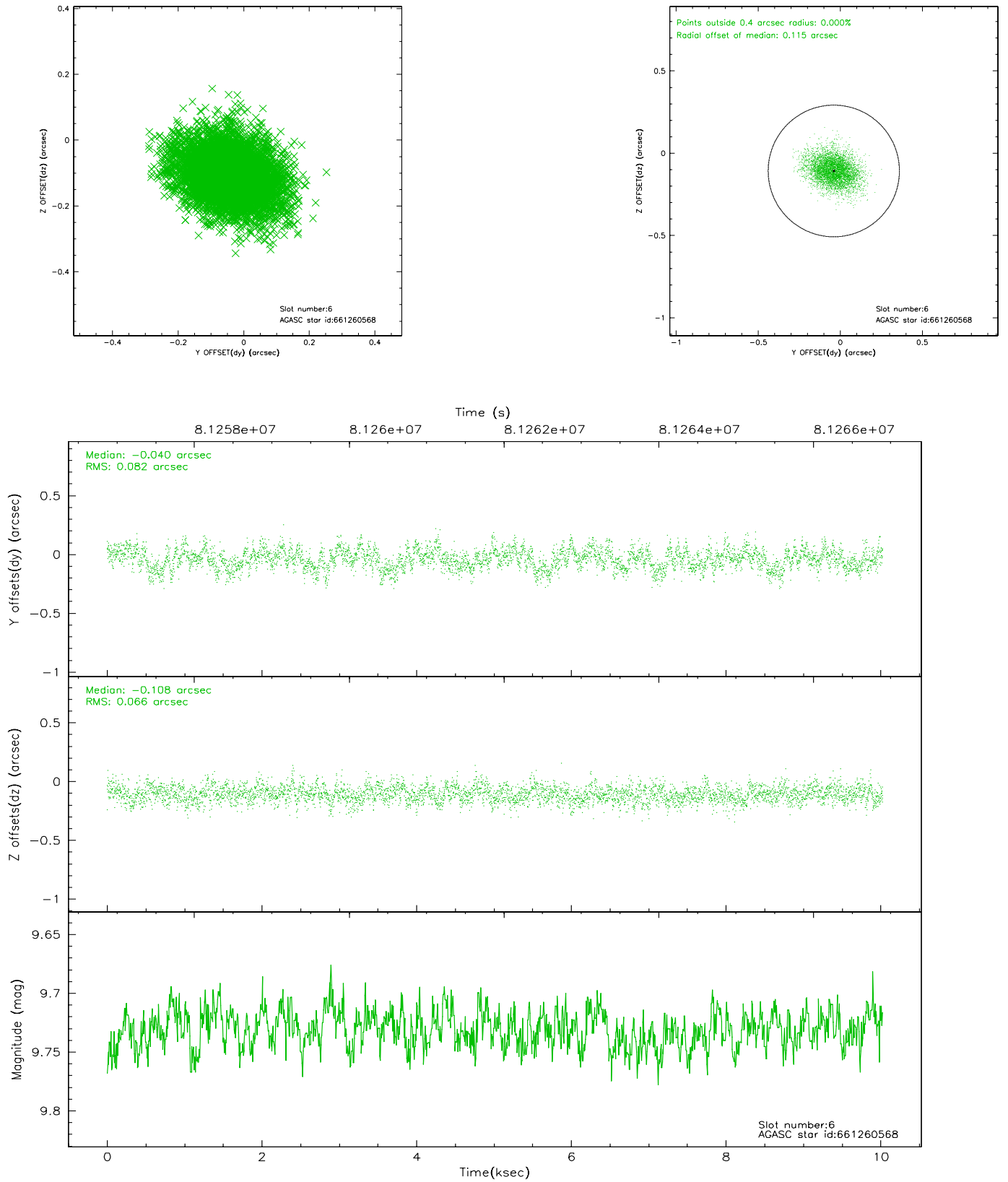
2.4.2 Slot 4



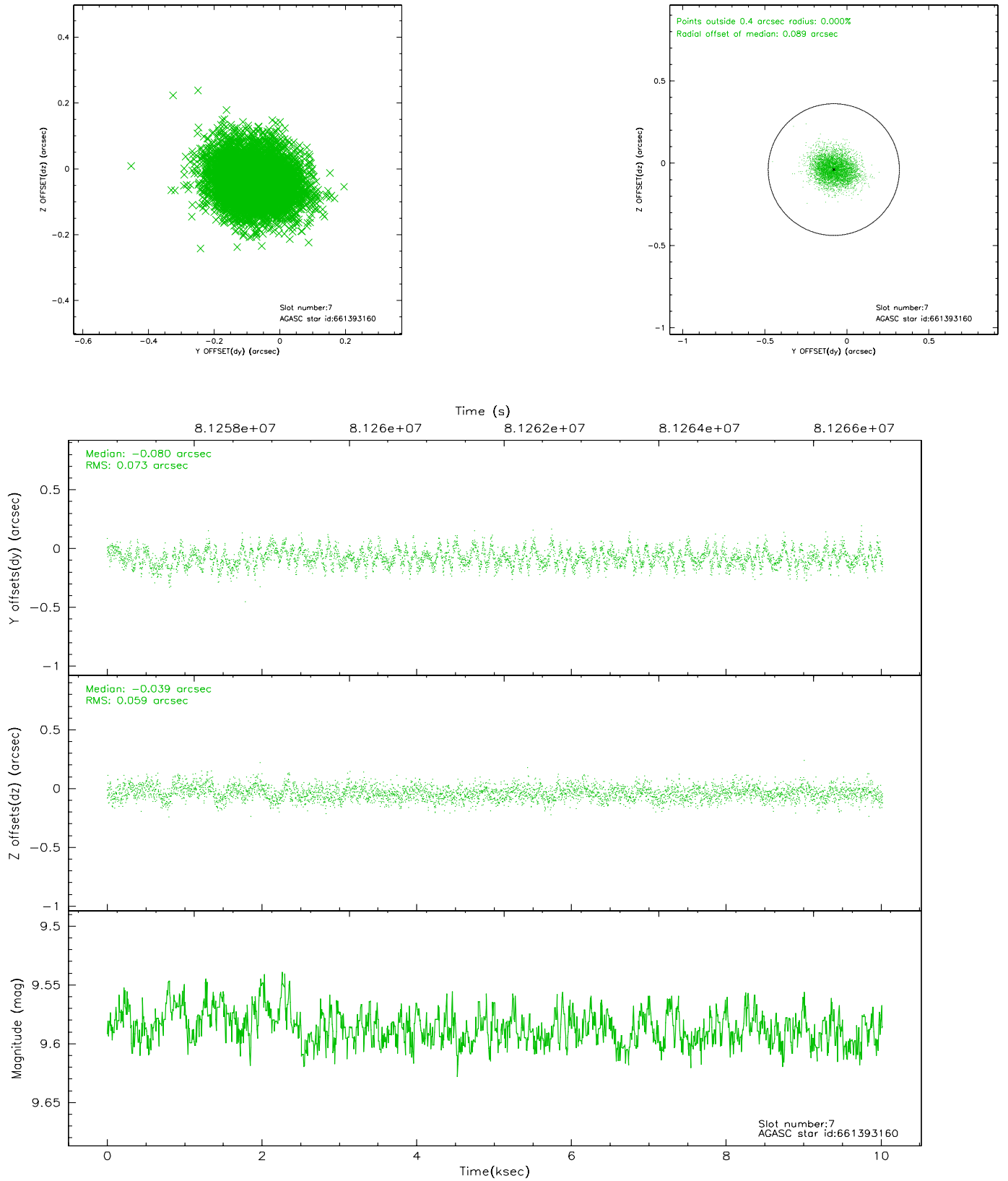
2.4.3 Slot 5



2.4.4 Slot 6

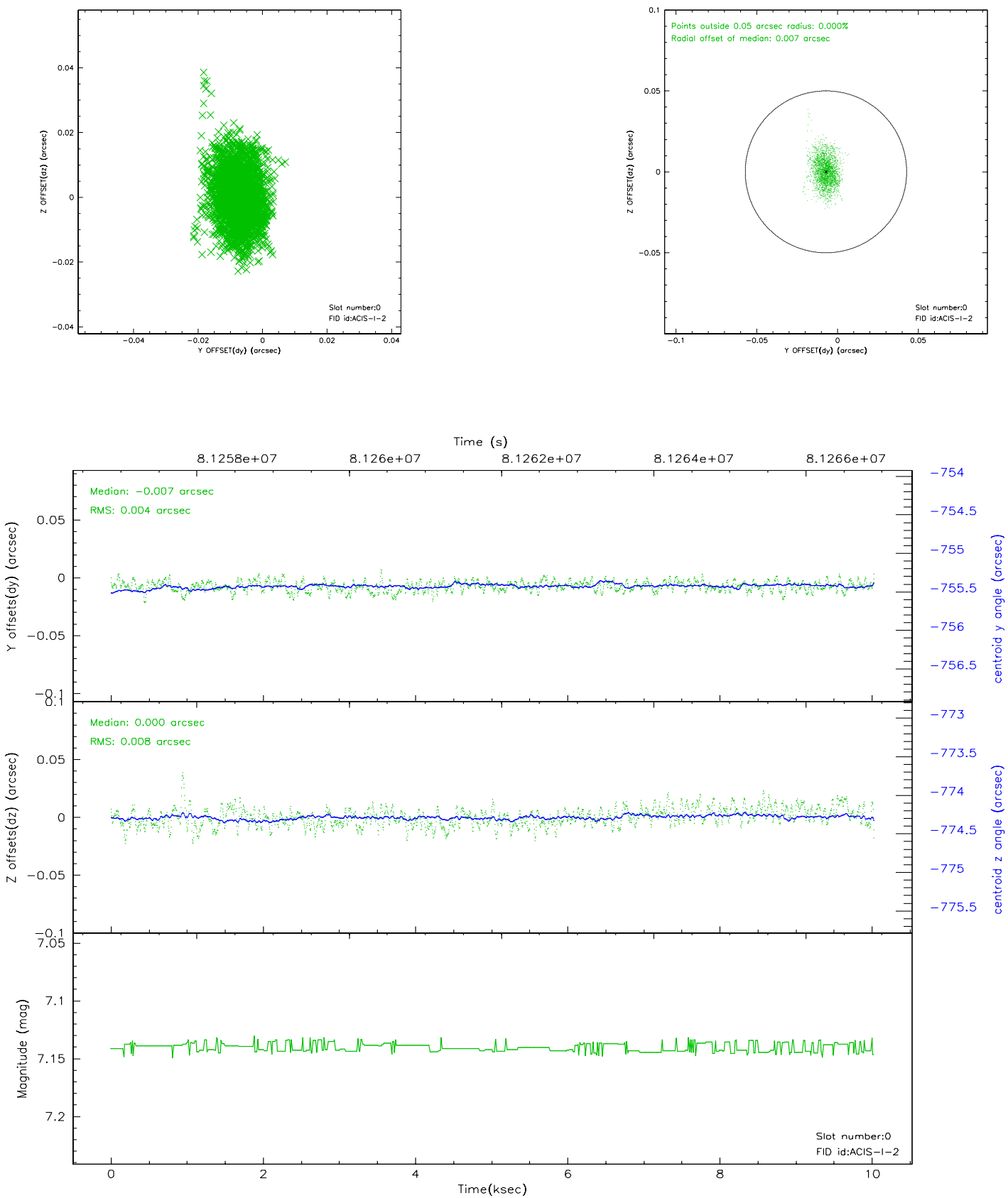


2.4.5 Slot 7

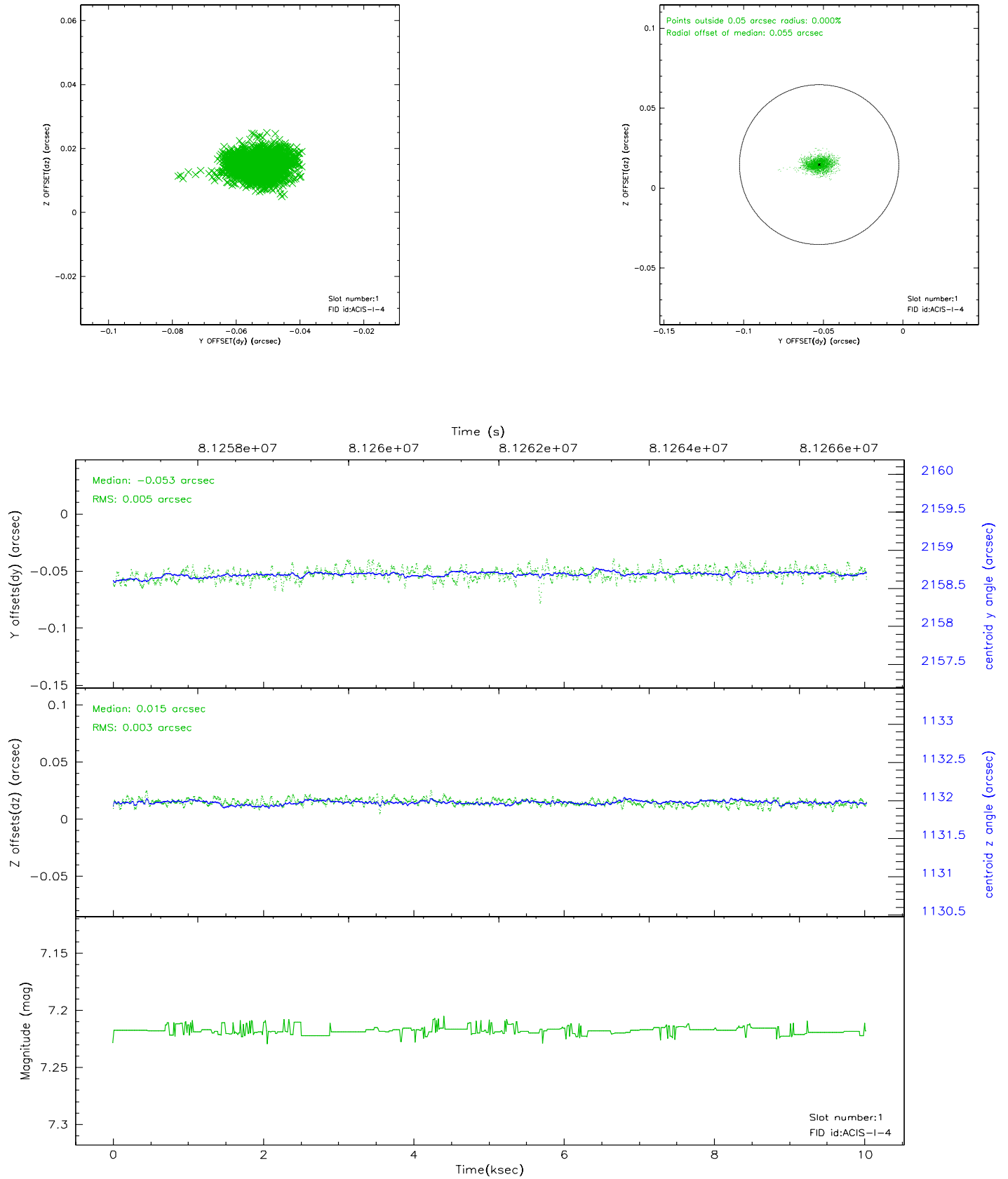


2.5 FID Slots

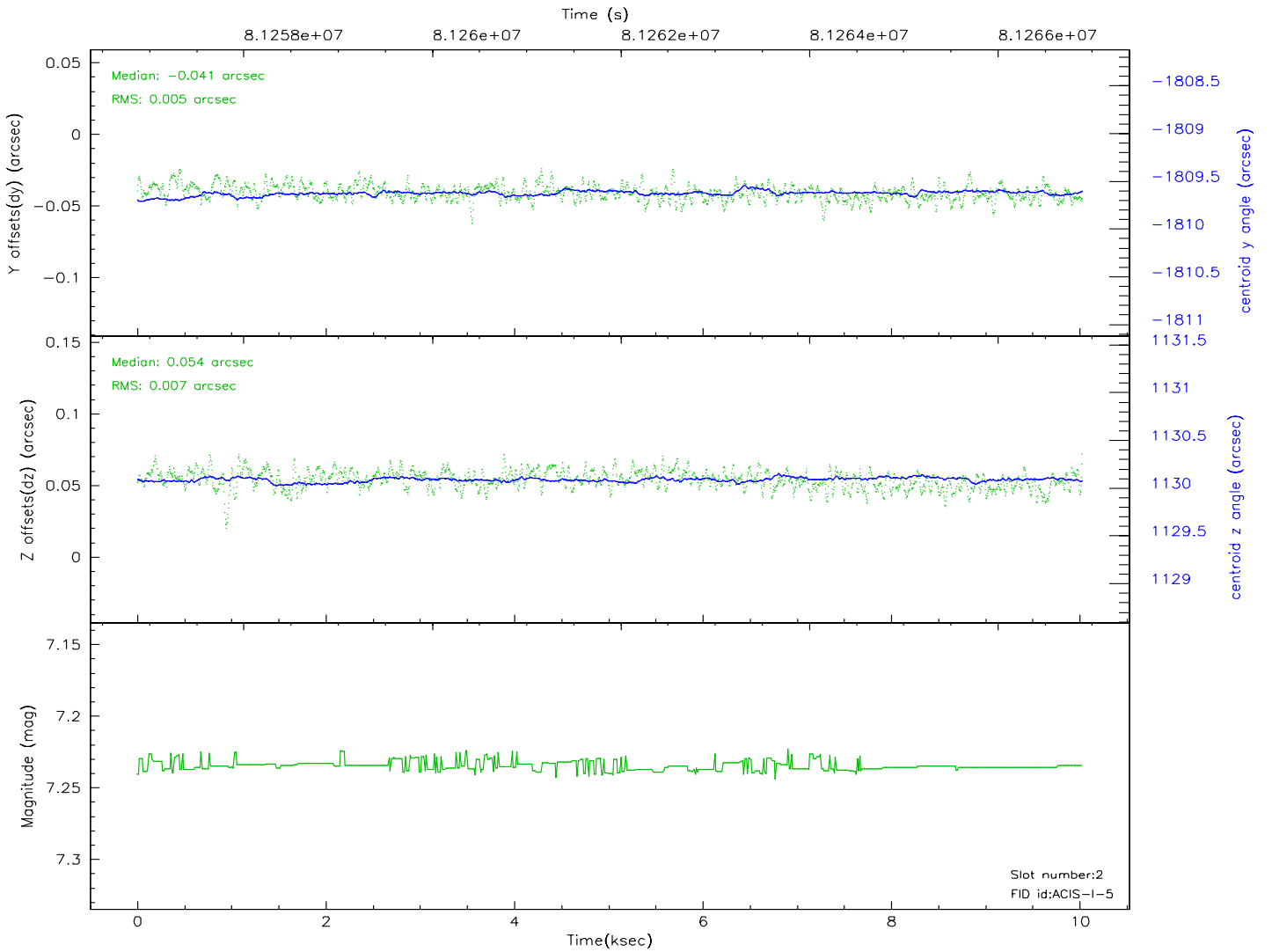
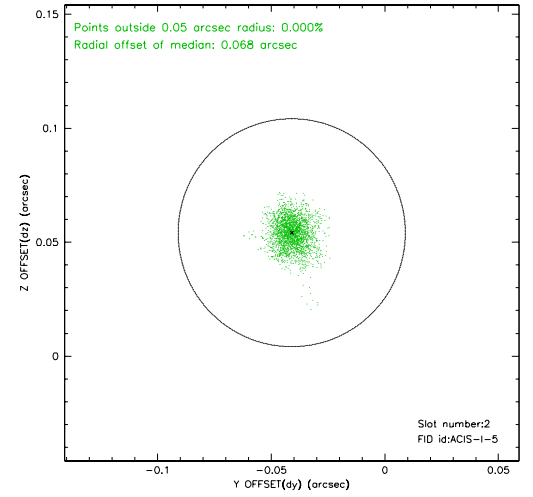
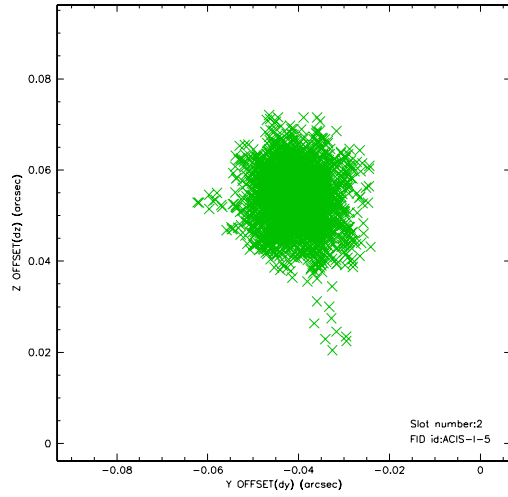
2.5.1 Slot 0



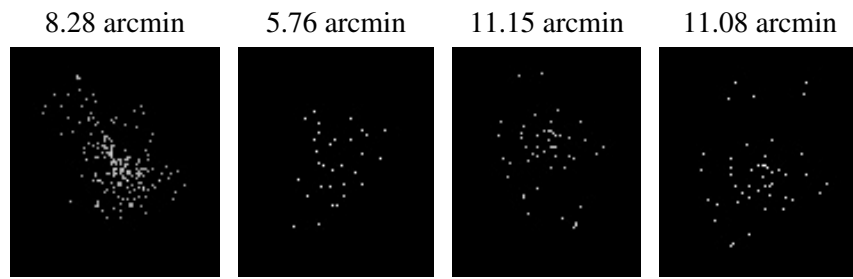
2.5.2 Slot 1



2.5.3 Slot 2



3 Point Sources



A Summary

A.1 Status

| | |
|----------------------------|---------------|
| V&V Scientist | Beth Sundheim |
| V&V Date (YYYY-MM-DD) | 2007.06.01 |
| V&V Edition | 1 |
| V&V Disposition and Status | OK |
| V&V Charge Time | 9.568 |

A.2 Comments